



LEVEL CROSSING REMOVAL PROJECT



LEVEL CROSSING REMOVAL UPDATE

MCGREGOR ROAD, MAIN STREET AND RACECOURSE ROAD, PAKENHAM

JUNE 2021

Help shape the designs of your new station precincts

The Victoria Government is removing 17 dangerous and congested level crossings, as part of a \$15 billion investment to upgrade the Pakenham line. The level crossings at McGregor Road, Main Street and Racecourse Road have been fast-tracked for removal and as part of the project we're also building new stations at Pakenham and Pakenham East.

We're raising the rail line over the roads to reduce local congestion and to allow more trains to run more often, as well as introducing new community open spaces for locals to enjoy.

Pakenham will be level crossing free, with all boom gates gone for good in 2023/24.

Late last year we asked you what you value about the Pakenham area, how you use the area and what improvements you would like to see as part of our project.

You told us you wanted:

- efficient traffic flow
- improved safety
- better connections
- walking and cycling paths.

Now we're asking for your feedback on specific design elements of the two station precincts.

Why these level crossings need to go



63,000 vehicles use these crossings each day



Boom gates are down for up to 30 per cent of the morning peak



170 Metro and V/Line trains pass through the level crossings daily



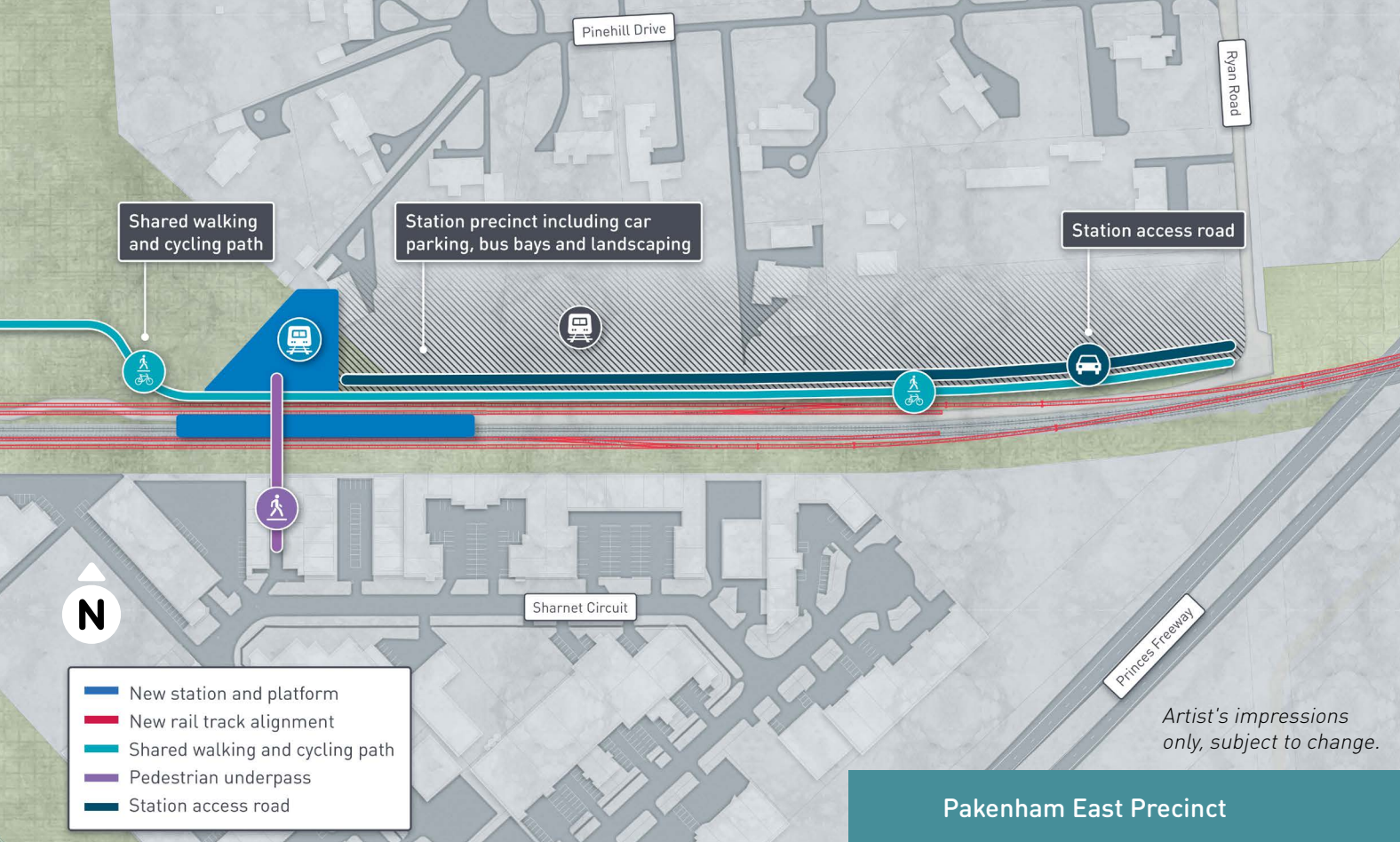
90,000 passengers use the Cranbourne-Pakenham line per day



SIGN UP FOR PROJECT UPDATES
levelcrossings.vic.gov.au

Authorised and published by the Victorian Government, 1 Treasury Place, Melbourne





SHARE YOUR IDEAS ABOUT YOUR TWO NEW STATION PRECINCTS

We know each community is unique and we want to hear your thoughts on the style of the new station precincts at Pakenham and Pakenham East.

These big construction projects give us the opportunity to revitalise local community precincts, stations and access, increase connectivity across Pakenham and create new open spaces.

We want to get your feedback on design elements including:

- overall look and feel
- materials
- plants and landscaping
- public artwork.

Along with our technical investigations, your feedback will help us shape the final designs. There is also an opportunity to incorporate public art in the Pakenham station precinct, so it reflects the unique characteristics of your community.

If you would prefer to provide the feedback in a hard copy submission form, please call **1800 105 105** to request a form to be mailed to you.

Pakenham East Station Precinct

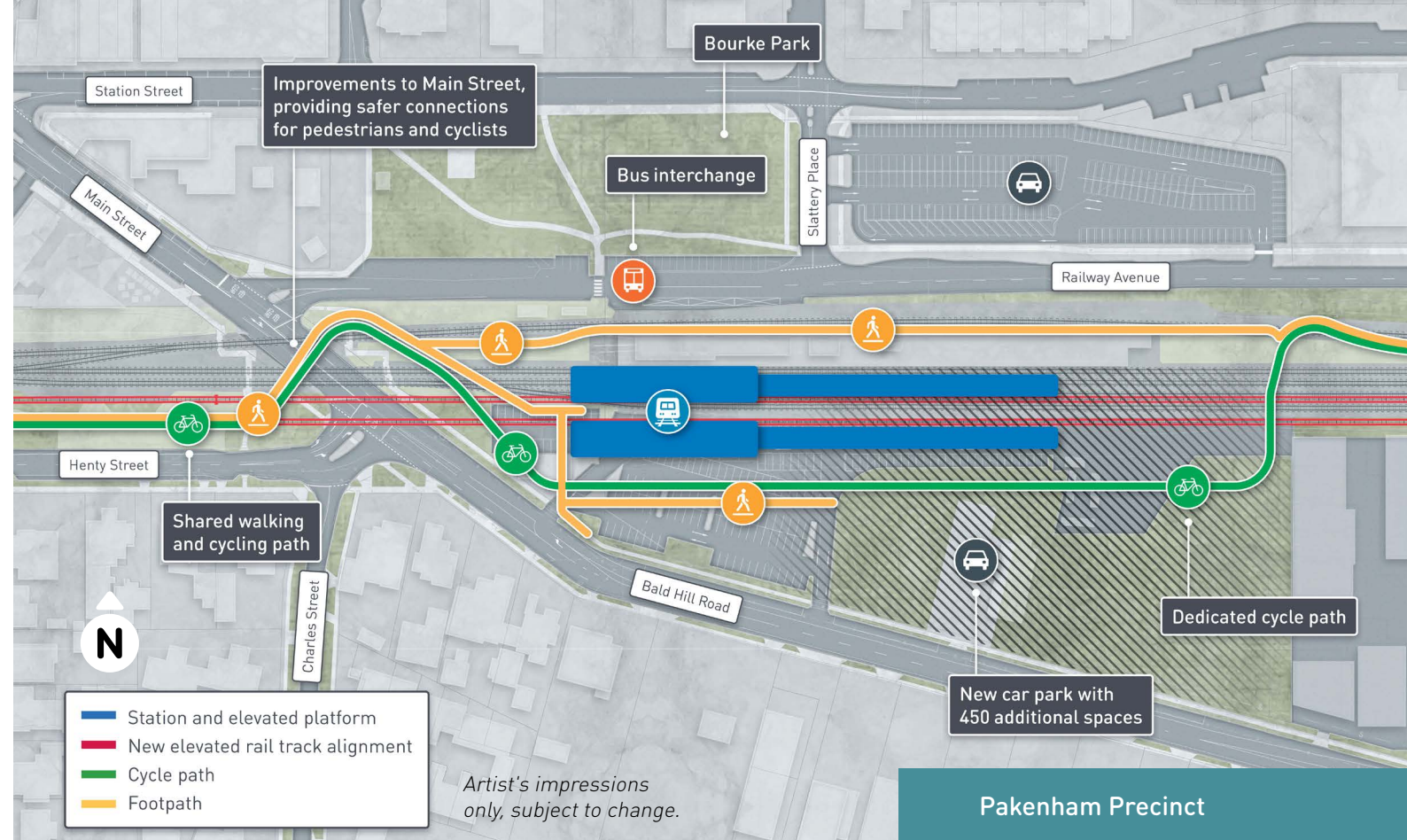
With the extension of the metropolitan rail line, the new Pakenham East Station will be at ground level, located between Deep Creek and the Princes Freeway.

The station will be easily accessible by Ryan Road in the north and Sharnet Circuit in the south, with a pedestrian underpass to access the platforms. This new station will also be less than three kilometres away from the majority of the Pakenham East Precinct Structure Plan, to cater for this new community.

To minimise congestion and delays, there'll be four train tracks at the station. Two dedicated tracks will be for V/Line and freight trains so these trains can bypass the station and two crossover tracks will enable Metro trains to turn back off the mainline.



Share your views by visiting engage.vic.gov.au/lxrp-pakenham by **Monday 7 June**.



Pakenham Station Precinct

Pakenham's new modern, premium station will be elevated, next to the existing station.

There will be a safer bus interchange, upgraded walking paths and a new car park to improve accessibility.

A dedicated kiss-and-ride zone will make it easier for taxis and drivers to pick-up and drop-off passengers.

There will be secure bike storage for cyclists.

The elevated station platforms will be accessed by stairs and lifts, which will be big enough for mobility scooters, wheelchairs and prams.



Join our interactive online community information sessions



You're invited to join us at one of our community information sessions where you can learn more about the project, ask the project team questions and share your feedback on aspects of the new station designs.

Session details

Wednesday 16 June

Session 1: 4.30pm to 5.10pm

Session 2: 5.30pm to 6.10pm

Session 3: 6.30pm to 7.10pm

Thursday 17 June

Session 1: 4.30pm to 5.10pm

Session 2: 5.30pm to 6.10pm

Session 3: 6.30pm to 7.10pm

How to register

To join one of our interactive online community information sessions, please register by visiting [pakenhamlevelcrossingremovalprojectonlineevent.eventbrite.com.au](https://www.eventbrite.com.au/e/pakenham-level-crossing-removal-project-online-event)

You'll receive a Zoom link 24 hours before the event

Planning approvals

Level Crossing Removal Project is seeking community submissions on a range of planning matters, including:

- construction-related impacts
- environmental impacts
- amenity impacts
- native vegetation
- heritage.

Planning approval for this project will proceed under Clause 52.03 – Level Crossing Removal Project of the Cardinia Shire Planning Scheme. This clause facilitates the use and development of the project land without the need to obtain multiple planning permits.

Next steps

Your feedback from this round of consultation will help us refine aspects of the project, including the look and feel of the station precincts.

Along with our technical investigations, we'll use your feedback to further

The formal consultation period is now open. In addition to the matters listed above, we welcome submissions relating to any aspect of the project.

All submissions received will be included in a public consultation summary report. This report will inform the Minister for Planning's assessment of the project under Clause 52.03.

To make your submission visit us online at engage.vic.gov.au/lxrp-pakenham by **Friday 18 June**. If you would like a hard copy submission form sent to you, please contact us on **1800 105 105** or email us at contact@levelcrossings.vic.gov.au

progress the design for the project. We'll be coming back to the Pakenham community to share concept designs and show you how your feedback has been incorporated before major works begin. The best way to stay up to date on the project is by signing up to email updates at levelcrossings.vic.gov.au/subscribe

Project timeline

- ✓ **2020**
 - Site investigations
 - Technical and engineering assessments
 - Community engagement
- **2021**
 - Community engagement
 - Further engineering investigations
 - Project designs
 - Construction begins
- **2022**
 - Construction
- **2023/24**
 - Boom gates gone
- **2024**
 - Stations complete
 - Community spaces open for locals to enjoy

Please note that the timeline above is subject to change.



CONTACT US

contact@levelcrossings.vic.gov.au

1800 105 105

Level Crossing Removal Project
GPO Box 4509, Melbourne VIC 3001

Follow us on social media
[@levelcrossings](https://www.facebook.com/levelcrossings)



Translation service – For languages other than English, please call 9280 0780.

Please contact us if you would like this information in an accessible format.

If you need assistance because of a hearing or speech impairment, please visit relayservice.gov.au