



Artist impression – subject to change

FIVE LEVEL CROSSINGS GONE BY LATE 2021

EDITHVALE
ISSUE #4 – APRIL 2021

The Victorian Government is removing 18 level crossings and building 12 new stations, including Edithvale, Chelsea and Bonbeach, as part of a \$3 billion upgrade along the Frankston line that will improve safety, reduce congestion and allow more trains to run more often.

It's a big year on the Frankston line, with five more level crossings to be removed and three new stations open by the end of the year - months ahead of the original 2022 date.

Works are well underway to remove five dangerous and congested level crossings between Edithvale and

Bonbeach by lowering sections of the Frankston line into a rail trench.

Major construction will begin in mid 2021, when we need to close Edithvale, Chelsea and Bonbeach stations so we can dig the rail trenches and begin building the new modern station precincts.

You can view the designs for the new Edithvale Station precinct in this community update.

By late 2021, bayside locals will benefit from:



less congestion and time stuck at the boom gates



three new modern stations, with improved facilities



upgraded key intersections and a more direct road network



safer pedestrian and cyclist connections



more than 90,000 new trees and shrubs planted between Edithvale and Bonbeach



a more reliable train service



SIGN UP FOR PROJECT UPDATES
levelcrossings.vic.gov.au

A NEW STATION DESIGNED FOR THE COMMUNITY

By the end of this year, Edithvale will be level crossing free, with safer road connections and the new modern station open to the community.

The new Edithvale Station, which will be closer to Denman Avenue, has been designed to enhance connections around the area.

Improved bike facilities and walking and cycling connections will create more ways to access public transport, local shops, community facilities and the beach.

The designs are based on community feedback and capture the vibrant identity of the area.

The new station design is a modern representation of the original coastal landscape and the use of natural materials.

Station buildings reflect the dynamic coastal character of rolling sandy dunes and the unique textures and colours of the local vegetation.

In Edithvale, station forecourts and seating around the precinct will provide a comfortable and sheltered waiting space for commuters, identified by built in furniture, changes in unique paving patterns and feature arbours with climbing plants scattered around the station precinct.



Artist impression – subject to change

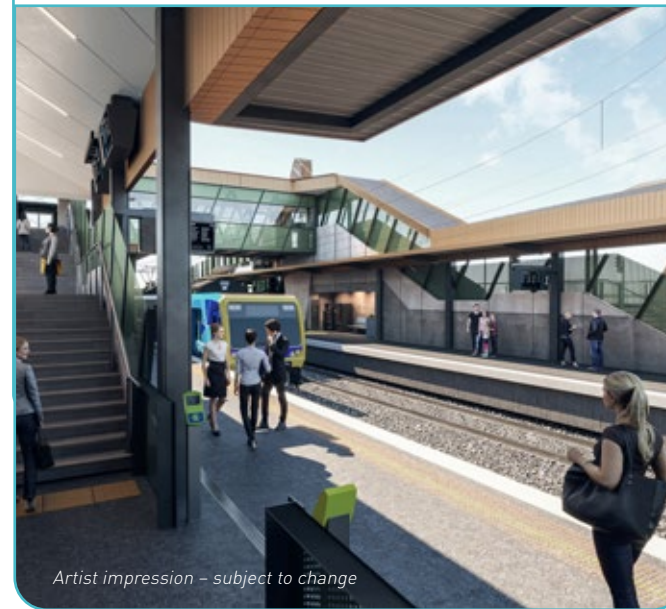
Easier access to station platforms and facilities

The new station has been designed to make it safer and easier to get to station platforms.

In Edithvale, there will be three entry points on each side of the station via lifts, stairs and ramps.

Rail trench fast facts:

- Begin at Lochiel Avenue/Alexandra Street and end at Bapaume Avenue
- 900-metre-long trench
- 12 metres wide
- 7 metres deep
- Safety barriers and fence up to 2.75 metres high



Artist impression – subject to change

Safer pedestrian connections

All pedestrian crossings over the Frankston line will align with pedestrian connections across Nepean Highway and Station Street, creating easier and safer pedestrian access to local shops, the beach and public transport.

A new shared use path from Bonbeach to Edithvale will be built as part of the project. It is part of more than 11 kilometres of new shared use paths being built from Edithvale to Frankston as part of Frankston line level crossing removals.

Find out more in our pedestrian crossings factsheet available at levelcrossings.vic.gov.au

Safer, more accessible car parking

As part of our works, we're making it safer and easier to access car parking around the area.

There will be new paths and upgraded pedestrian crossings on Nepean Highway and Station Street, which will improve connectivity between parking spaces, public transport, local shops and the beach. There will also be CCTV in commuter car parking areas and more lighting to create a safer station precinct.

The rail corridor through this section of track is very narrow, which means there is no room to provide more car spaces, however there will be no net loss of parking across Edithvale, Chelsea and Bonbeach.



Landscaping and surrounds

Natural materials and warm coastal colours will be used in different ways around the station forecourt to enhance the beachside look and feel of the local area.

Forecourts and seating around the precinct will provide a comfortable and sheltered waiting space for passengers.

Planting and vegetation

Edithvale locals have told us they want a mix of native trees, shrubs, flowering plants and grasses that extend the character of the local area.

A total of 231 trees and more than 28,000 plants and shrubs will be planted as part of landscaping plans for the new Edithvale Station and surrounding precinct.

Working together to save native plants along the Frankston line

We've been working closely with Kingston City Council to save native plants along the rail line in Edithvale and Bonbeach, prior to major works starting in 2021.

So far more than 200 plants that provide habitats for native animals and attract pollinating insects like butterflies, have been safely removed and taken to a specialised nursery until they can be replanted in nature reserves in Aspendale and Chelsea as part of revegetation projects.



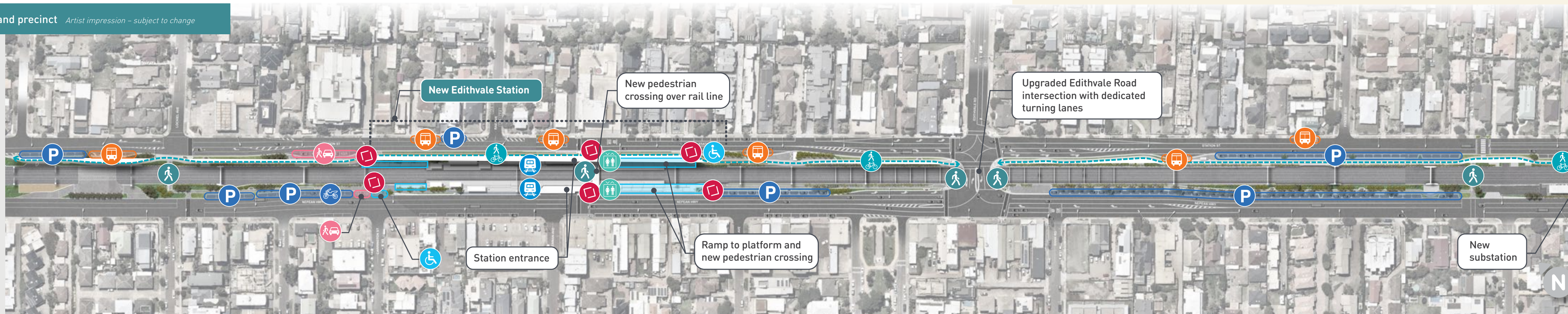
Crews safely removing vegetation for re-planting



Your new Edithvale Station and precinct

Artist impression – subject to change

- Bus stop
- Pick up and drop off area
- Ramps to platforms
- Accessible car park
- Pedestrian crossing
- Station entrance
- Shared cyclist and pedestrian path
- Motorbike parking
- Lift
- Station platform
- Car parking



A BIG YEAR FOR EDITHVALE, CHELSEA AND BONBEACH



Our crews are working to prepare the area for major construction by relocating underground utilities and complete piling works to build strong foundations for the new stations and rail trench walls.

Major construction will begin in mid-2021, when we need to close Edithvale, Chelsea and Bonbeach stations so we can demolish the old buildings, ready for construction of the new modern stations, which will open later in the year.

In Spring, our major occupation will start with a two-month closure of the Frankston line between Mordialloc and Stony Point. Crews will work around the clock to excavate the rail trenches, build roads over the rail trenches, extend Thames Promenade to the Nepean Highway, lay new tracks and signalling, and complete the new stations – removing five level crossings for good.

During this time buses will replace trains on the Frankston line and there will be temporary closures of level crossings for drivers and pedestrians with detours in place.

You can get in touch with the team if you have any questions about our upcoming works. You can call us on **1800 105 105** or email us via contact@levelcrossings.vic.gov.au

We know pedestrian connections across the Frankston line are important to the local community.

Our priority is to keep these open as much as possible throughout construction, however some closures will be unavoidable.

To stay up to date on the latest information about pedestrian crossings head online to the project page or scan the QR code below.



Crews replacing rail sleepers along the rail line between Edithvale and Bonbeach during our February rail closure



CHANGES TO THE WAY YOU TRAVEL

As we continue our progress to remove five more level crossings for good, there will be changes to how you move around the area.

We'll make sure to give you as much notice as possible so you can plan your journey accordingly.

Upcoming disruptions

Rail



In mid 2021, we'll close Edithvale, Chelsea and Bonbeach stations so we can begin digging the rail trench and building the new station precincts.

Replacement buses will connect Edithvale locals to nearby stations during this time.

Buses will replace trains on the Frankston and Stony Point lines for two months in Spring.

You can plan your journey at ptv.vic.gov.au or call **1800 800 007**.

Road



Until late 2021, there will be changed traffic conditions with some lane closures on **Nepean Highway** and **Station Street** from Aspendale to Bonbeach.

There will be various lane closures, car parking and access changes until late 2021 on **Monica Avenue, York Street, Nepean Highway and Station Street, Bonbeach**.

Bus Routes 706 to Mordialloc and 902 to Airport West will not service selected bus stops until early 2022.

Stay up to date by visiting levelcrossings.vic.gov.au/disruptions or call **1800 105 105**.

Pedestrian & cycling



There will be impacts to pedestrian crossings in Edithvale, Chelsea and Bonbeach until late 2021.

There will be on-going sections of bicycle lane closures along Station Street between Edithvale and Bonbeach **until late 2021**.

Visit levelcrossings.vic.gov.au/disruptions for the latest information or call **1800 105 105**.

Other ways to keep in touch and stay informed

- Text **ECB** to **0429 839 892** to sign up for alerts for major traffic and construction impacts
- Send us a private message on the **Level Crossing Removal Project Facebook** page
- Contact our call centre on **1800 105 105** or contact@levelcrossings.vic.gov.au

CONTACT US

contact@levelcrossings.vic.gov.au

1800 105 105

Level Crossing Removal Project
GPO Box 4509, Melbourne VIC 3001

Follow us on social media
[@levelcrossings](https://www.facebook.com/levelcrossings)



Translation service – For languages other than English, please call 9280 0780.

Please contact us if you would like this information in an accessible format.

If you need assistance because of a hearing or speech impairment, please visit relayservice.gov.au

Project timeline



Early 2021*

- Underground service relocations and upgrades continue
- Piling works for the foundations of the new stations and rail trench walls continue



Mid 2021

- Edithvale, Chelsea and Bonbeach stations to close and be demolished
- Major rail closure and 24/7 works to dig rail trenches, extend Thames Promenade to the Nepean Highway, lay new tracks and signalling and complete new stations



Late 2021

- New Edithvale, Chelsea and Bonbeach stations open to the public
- Trains running in the new rail trench
- Five level crossings from Edithvale to Bonbeach gone for good



2022

- Landscaping and planting works complete

**Timeline subject to change.*

Health and Safety

The health and safety of our workers and community is our key priority as we continue works on the Frankston line level crossing removal projects.

