



# STATE LIBRARY STATION COMMUNITY REFERENCE GROUP

CROSS YARRA PARTNERSHIP D&C

**Kate Walshe**, Communications Director, CYP D&C

**Mary Parker**, Director Communications & Creative, CYP Project Co

19 November 2021



## AGENDA



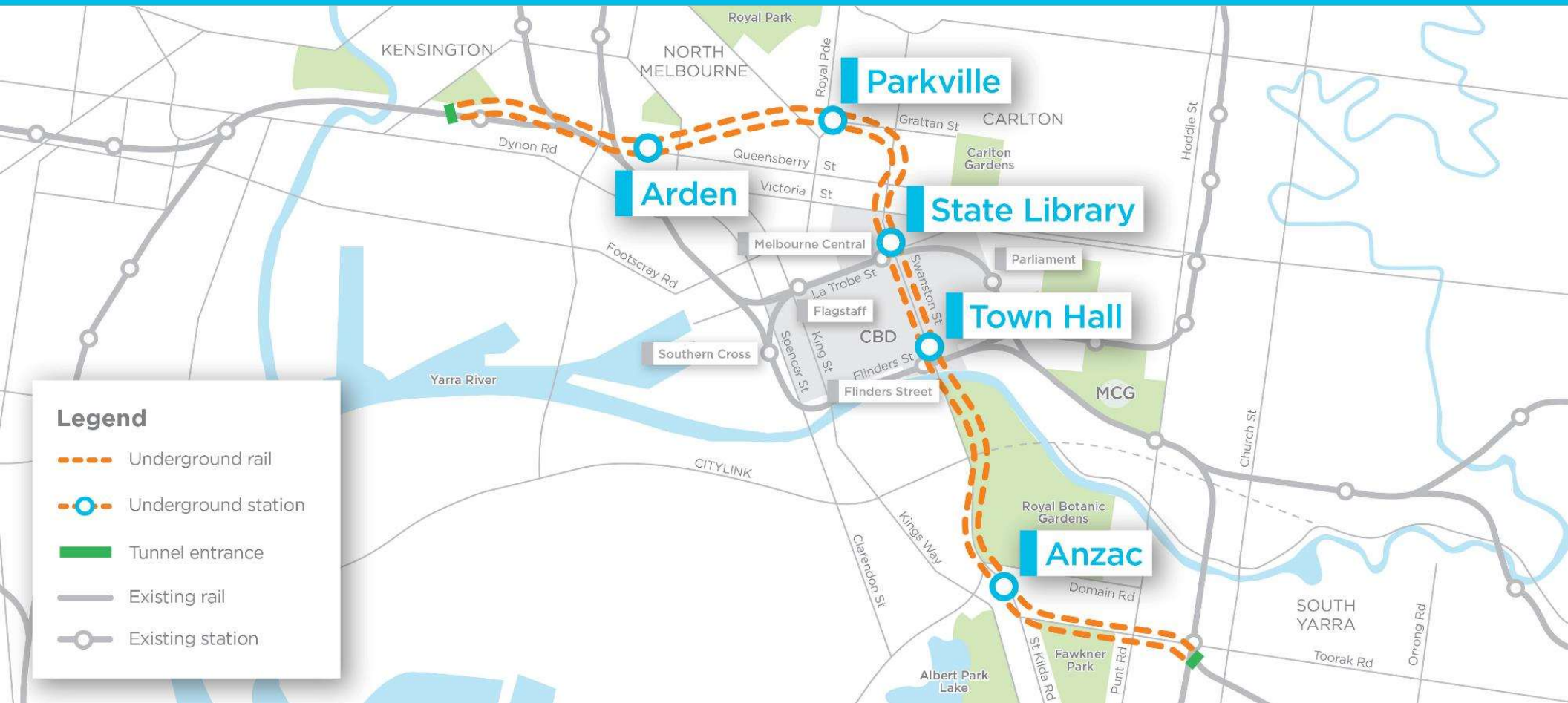
1. Precinct Updates
3. Creative Program Update
2. State Library Station Update



# Precinct updates

# Metro Tunnel Project

## Project Alignment



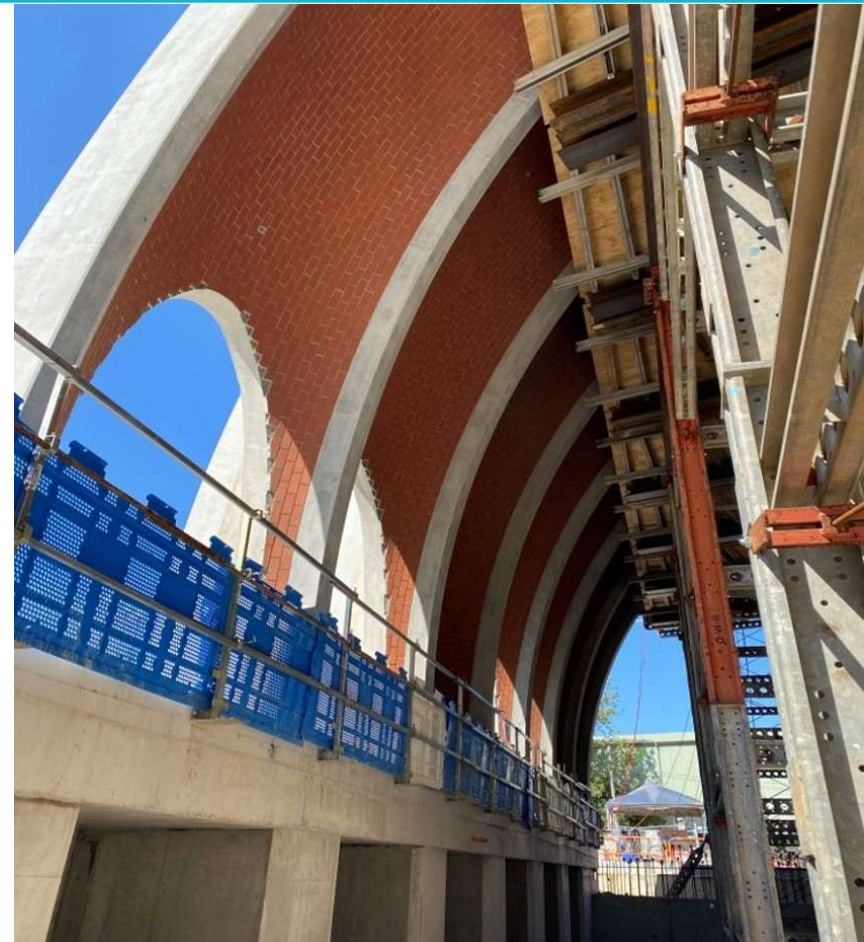
### Legend

- Underground rail
- Underground station
- Tunnel entrance
- Existing rail
- Existing station

## Arden Station



- All 45 segments of the Arden Station entrance arches have now been installed
- Blockwork installation and mechanical, electrical and plumbing installation is continuing.

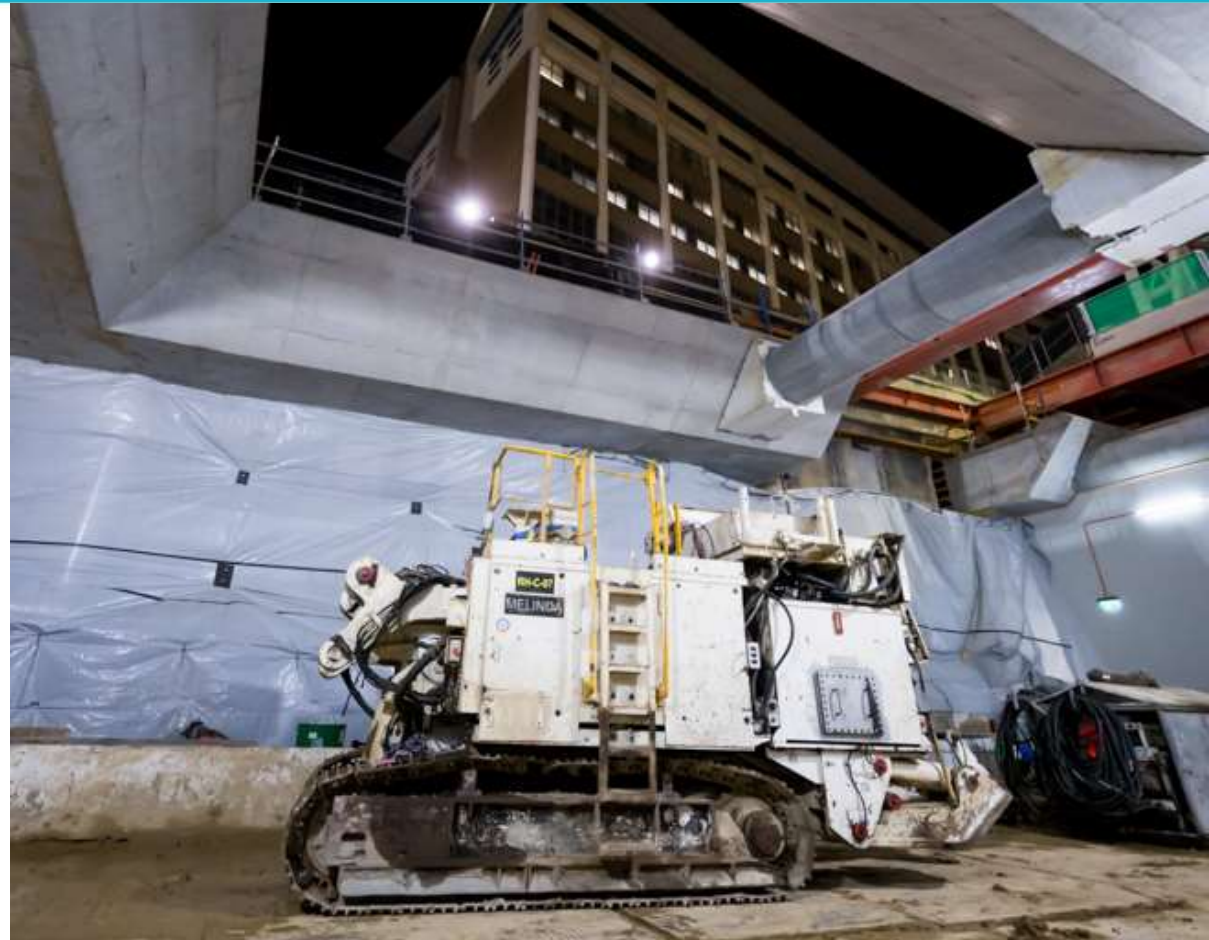




## Parkville Station



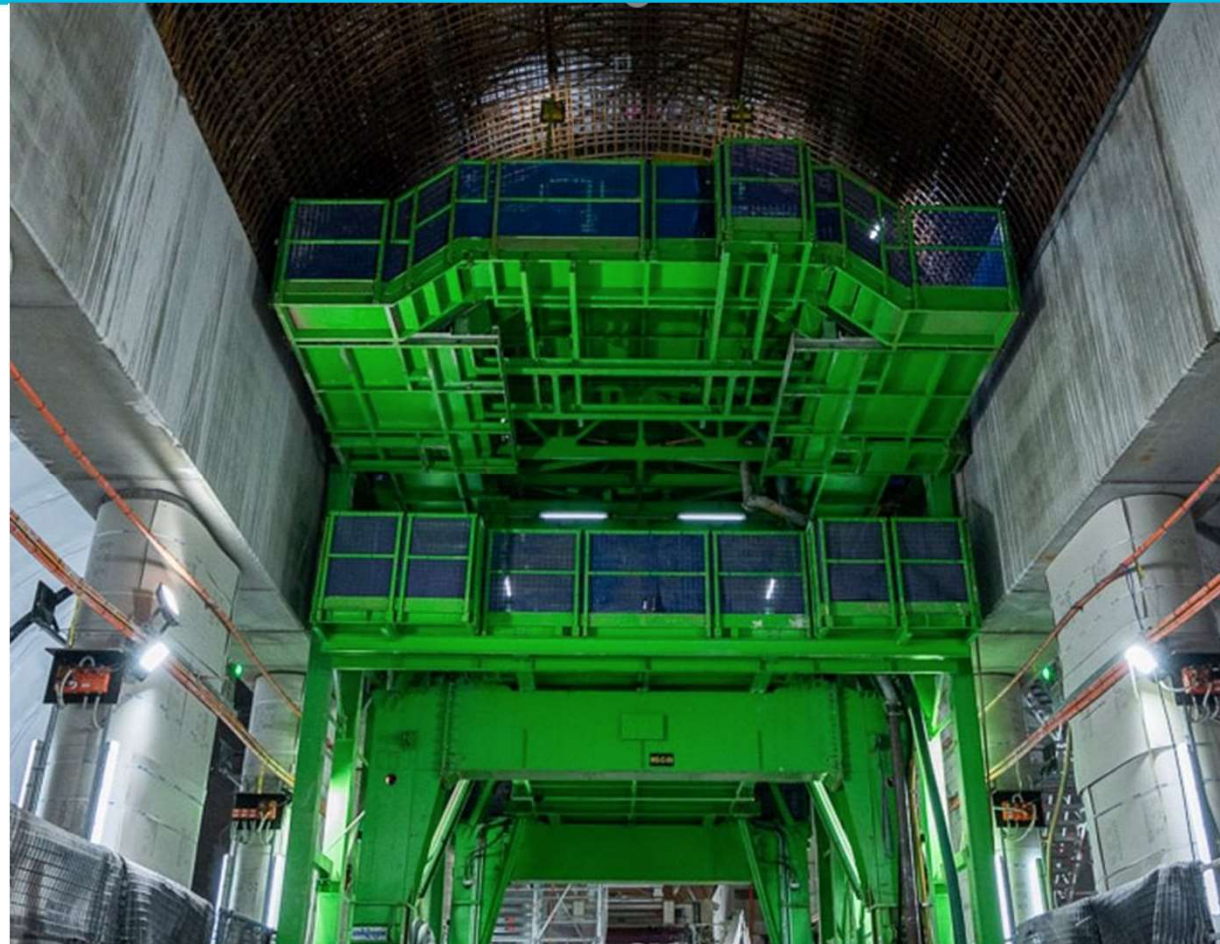
- Excavation of Grattan Street West
- Construction of Royal Parade pedestrian underpass underway with the recent arrival of roadheader Melinda to site
- Blockwork wall construction and services installation are taking place in the main station box



## Town Hall



- Concrete pours underway to form the arches within the central cavern
- Works to install tower crane footings underway on Swanston Street
- Flinders Quarter excavation works reached over 50% total





## Anzac Station



- The entire station box has now been completely excavated
- D-wall demolition is ongoing on both sides of the station box, connecting the concourse level of the station to two of the three station entrances.

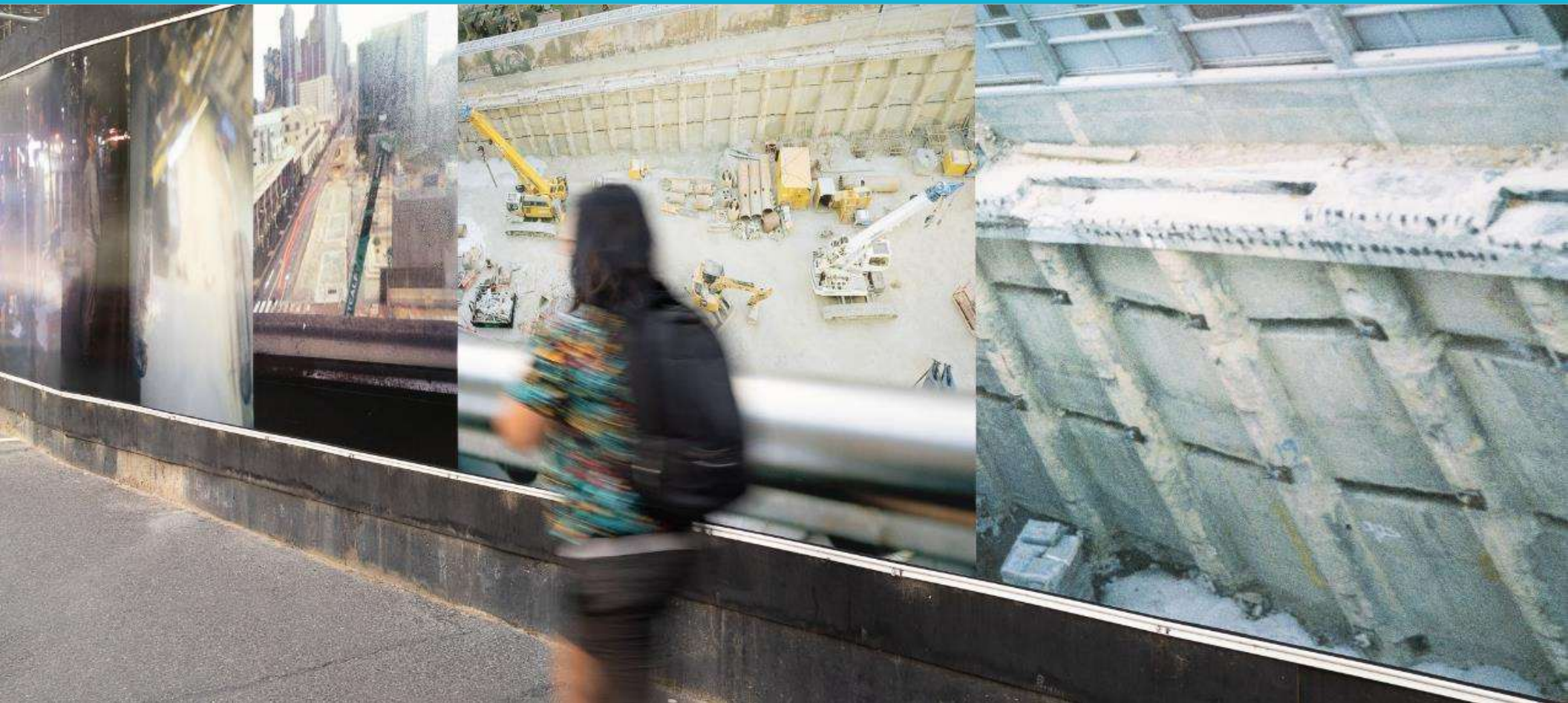






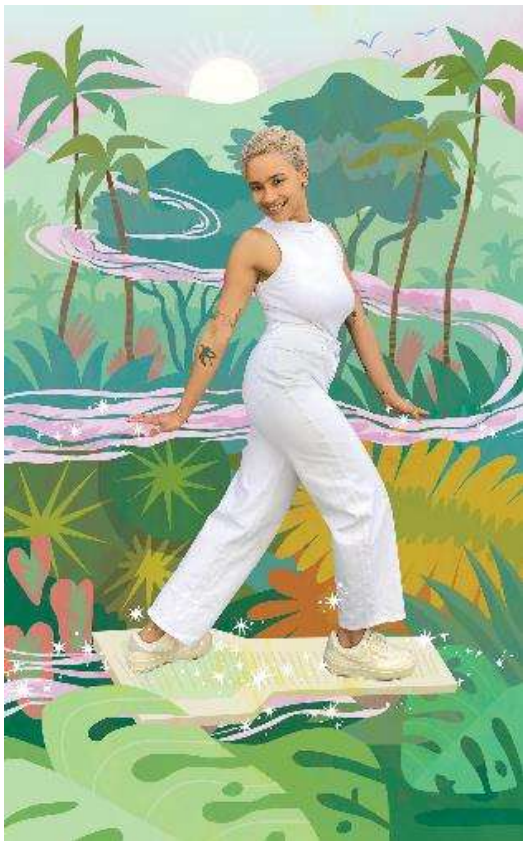
# Creative Program Update

## Rudi Williams 'Vantage Point'

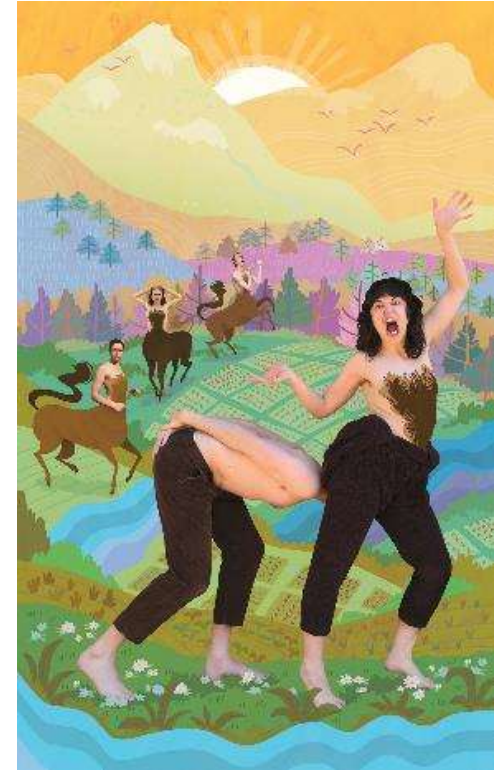
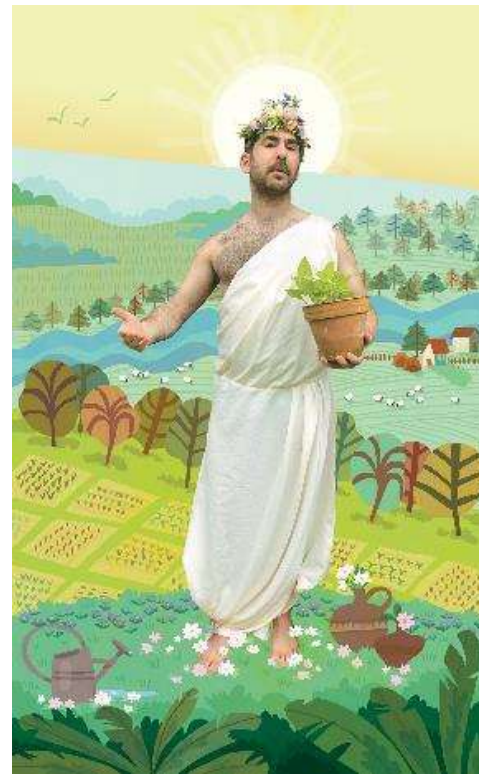
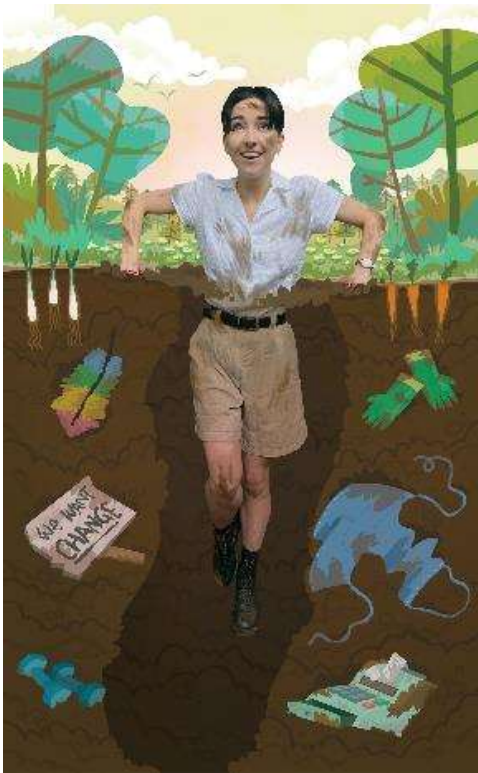




## FACES OF FRINGE



## FACES OF FRINGE





## NOLA – SWANSTON ST



## NOLA – A'BECKETT ST TOWERS





## NOLA - FRANKLIN ST WEST



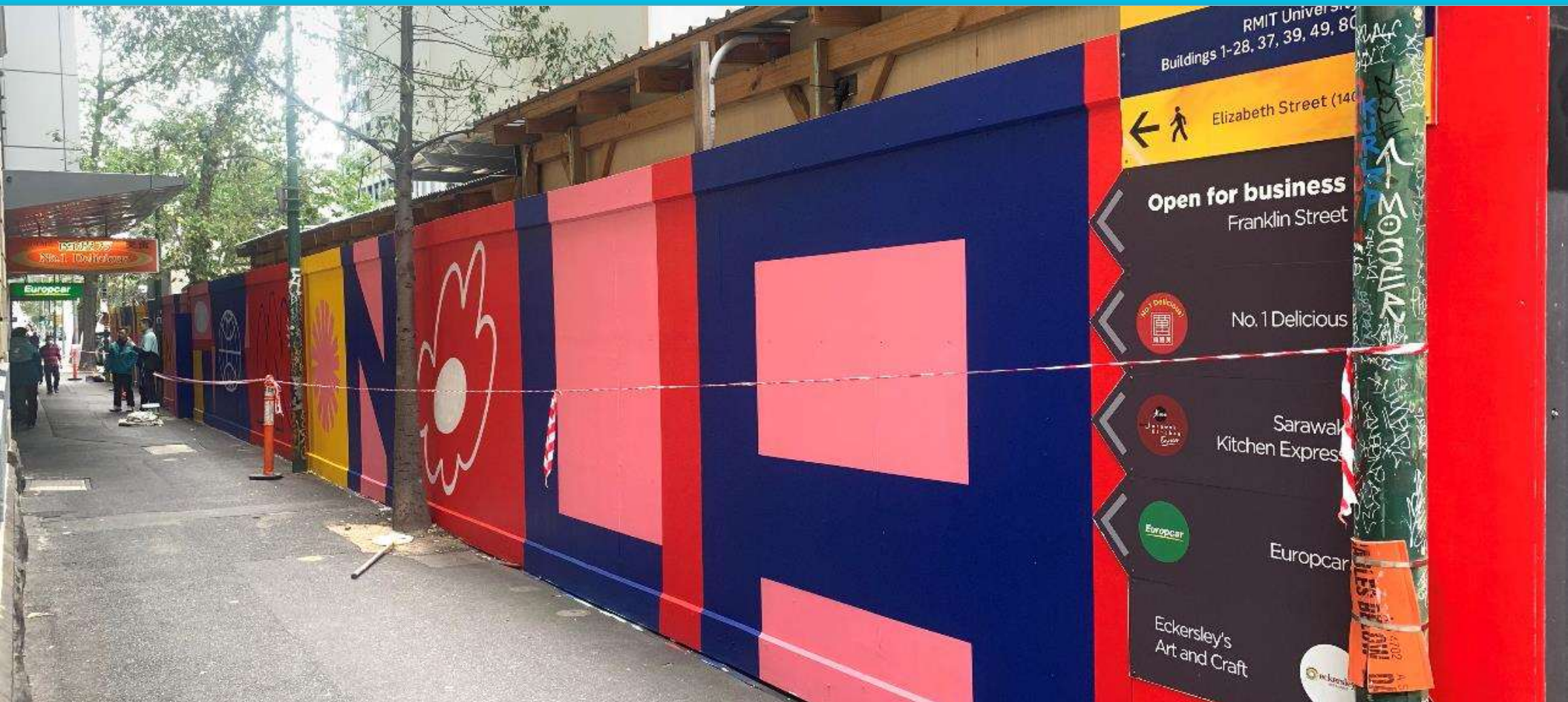


## NOLA - FRANKLIN ST WEST





## NOLA - FRANKLIN ST WEST





## MELBOURNE FASHION WEEK POP-UP RUNWAY





melbfashionweek • Following



melbfashionweek Keep your eyes on the street this week as our Pop Ups presented by @tacvictoria – Walk with care move through the city offering up a new way to runway as models move through the city in ready-to-wear looks. Kicking them off today was Pop Up 1 showcasing some of the coolest streetwear and giving a nod to skating and b-ball culture. Supported by @metrotunnelvic Creative Program. #melbournefashionweek #mfw

14h



joe\_babes ❤️



11h Reply



nola\_precinct ❤️ ❤️ ❤️



13h Reply



homie.com.au 🤩🤩🤩 we spy a HoMie crewneck!



13h Reply



jolielaide\_au Side note. TAC have one of the most powerful media voices I have ever seen!! I can barely watch the adds they are that effective. Damn





## PROGRAM LOOKAHEAD



1. **NOV 29:** RMIT School of Design artwork installed along Franklin St East facing RMIT.
2. **LATE NOV:** CBD North project branding refresh
3. **DEC:** Integration of neon LED into the artworks
4. **DEC / JAN:** New greenery in Baskerville Lane planter boxes with ongoing maintenance
5. **JAN 23:** Miss First Nations / Midsumma artworks in Franklin St frames





## RMIT GRADUATION WORK

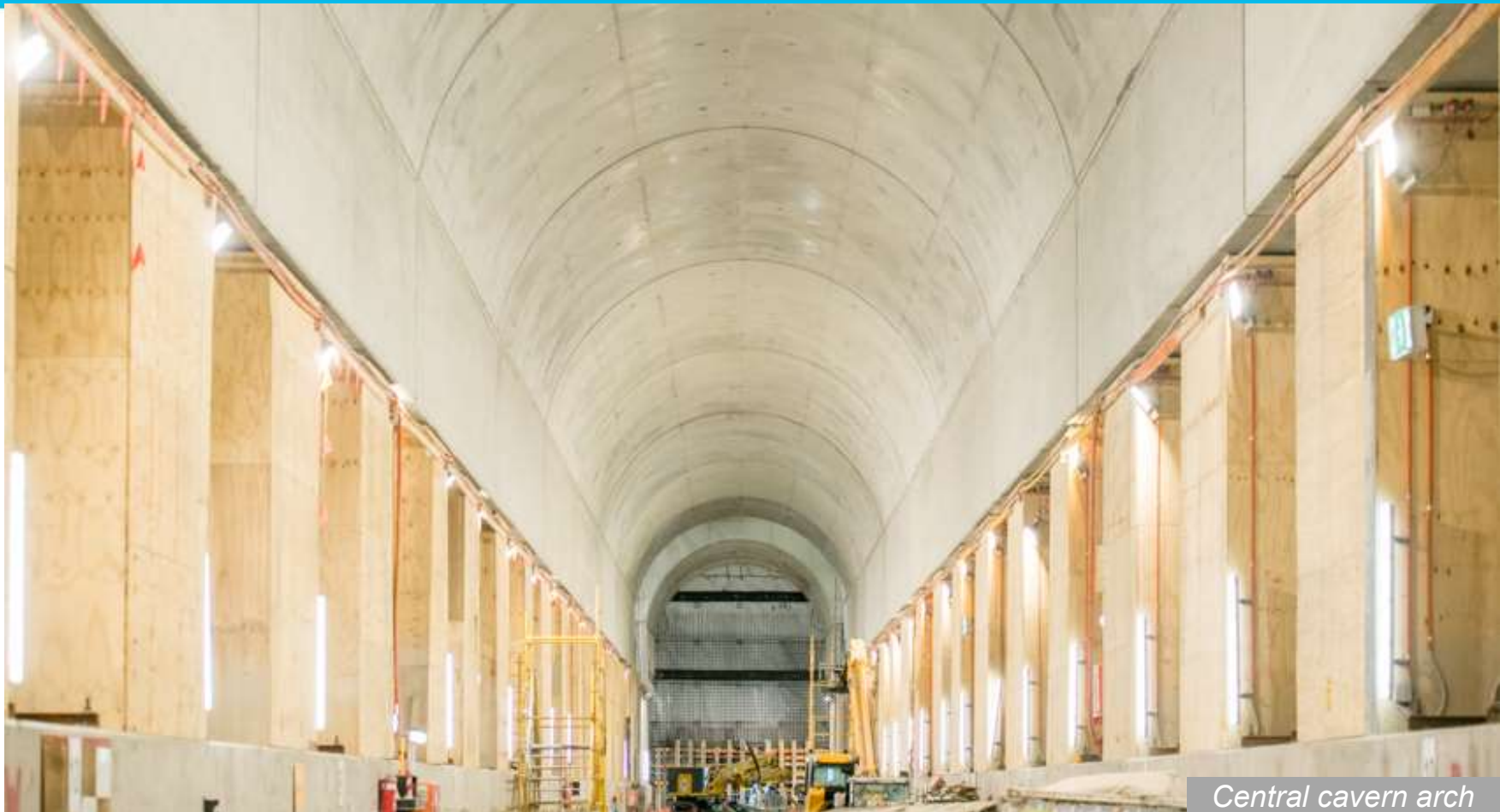


# Questions



# State Library Station Update

## STRUCTURES AND LINING



*Central cavern arch*



## STRUCTURES AND LINING



- This week, the team completed the first concrete pour for the arch of the eastbound rail platform tunnel
- Concrete pours are ongoing to construct the platform tunnel invert slab and sidewalls

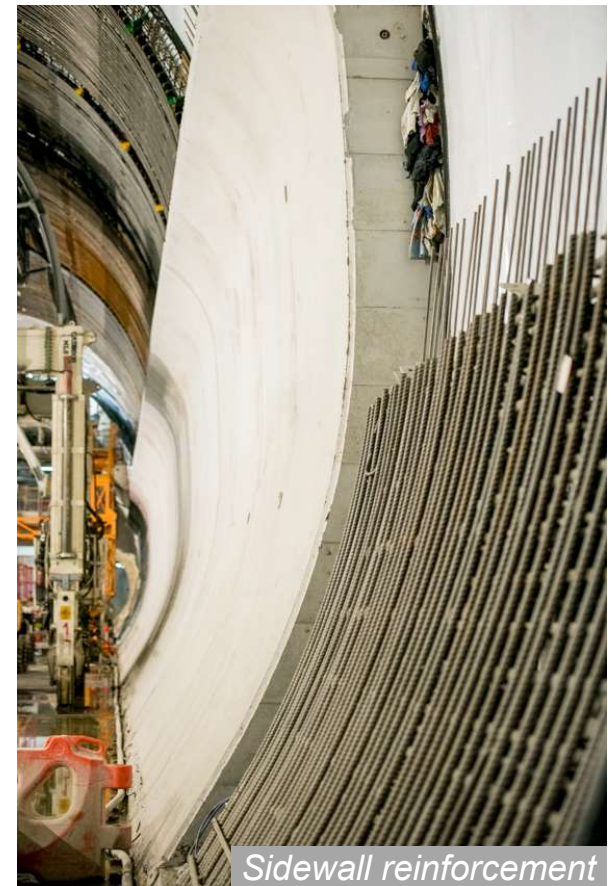


*Concrete arch pour*

## STRUCTURES AND LINING



*Tunnel arch reinforcement*



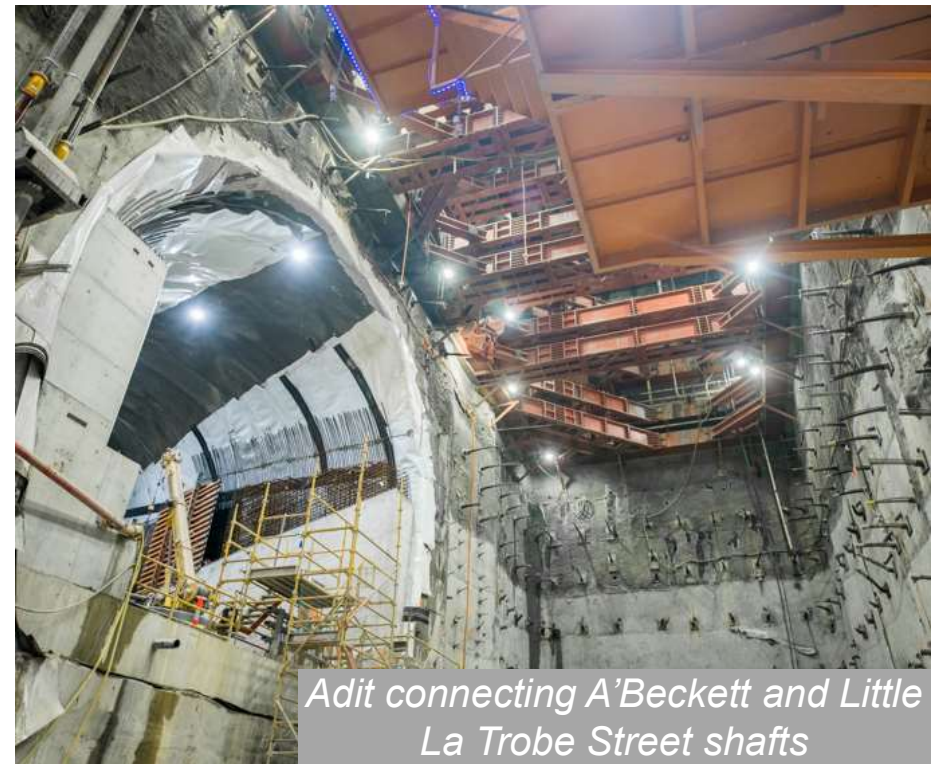
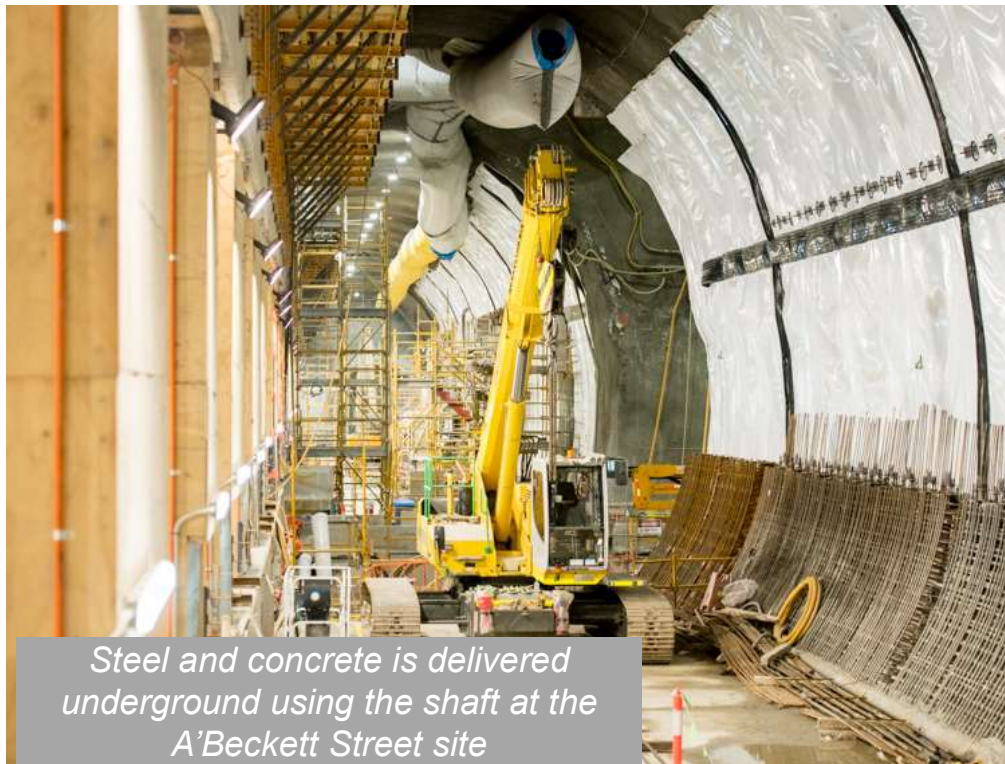
*Sidewall reinforcement*



## A'BECKETT STREET SITE

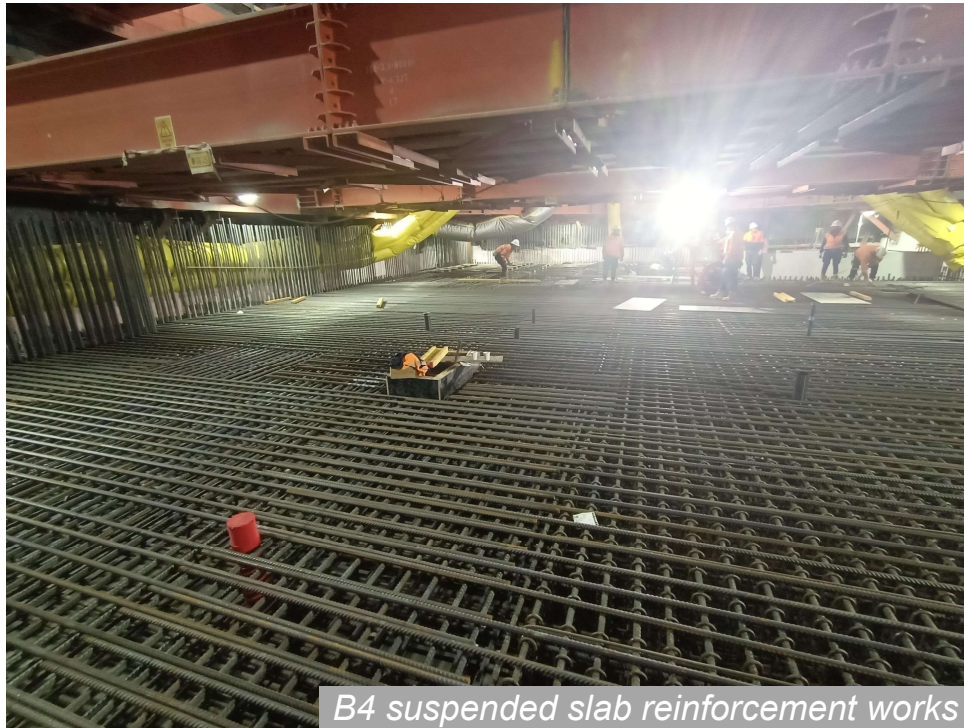


Works are continuing 24 hours a day, 7 days a week within the A'Beckett Street site





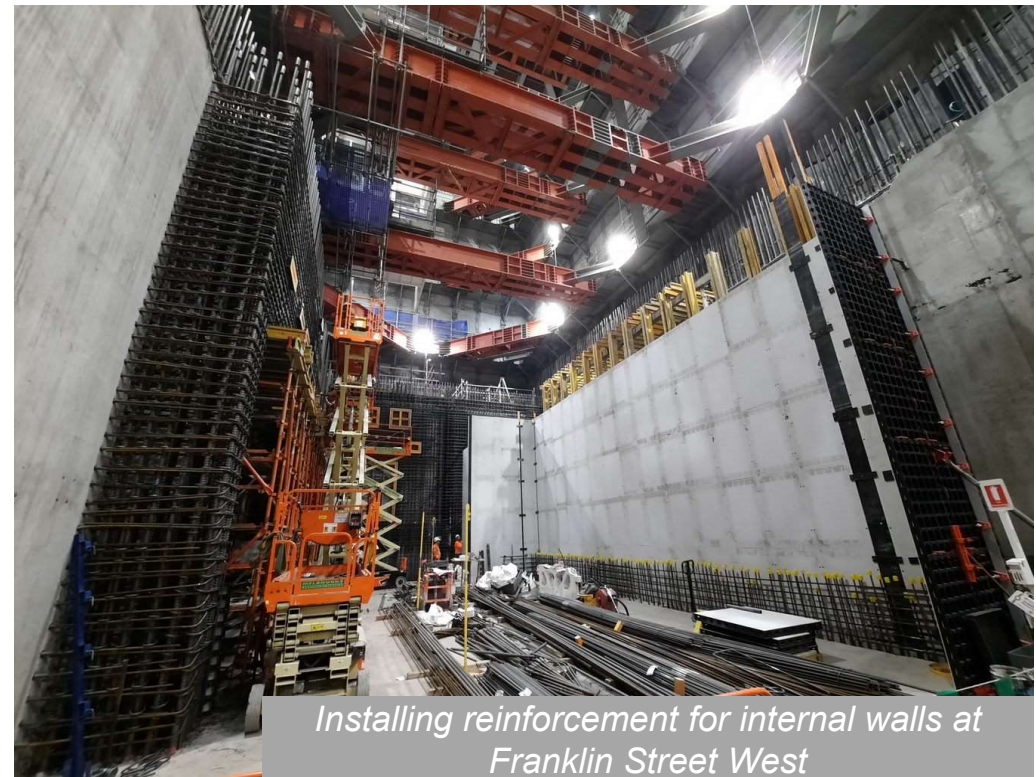
## FRANKLIN STREET SITES



## FRANKLIN STREET SITES

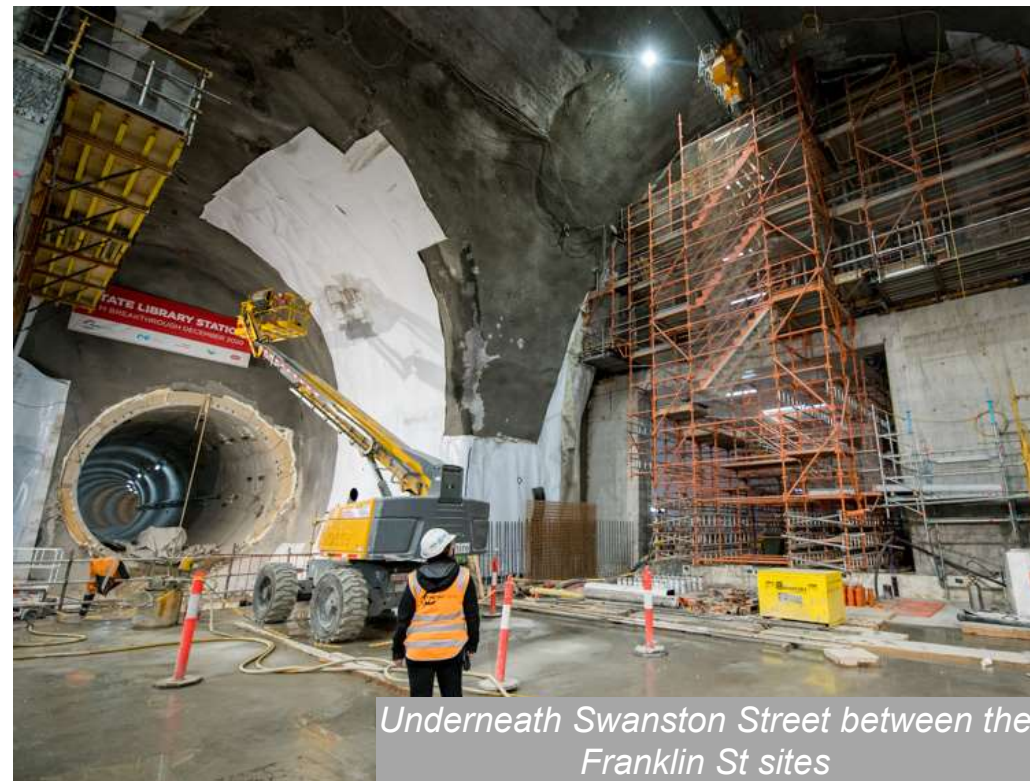


- Works are continuing 24 hours a day, 7 days a week at the Franklin Street sites





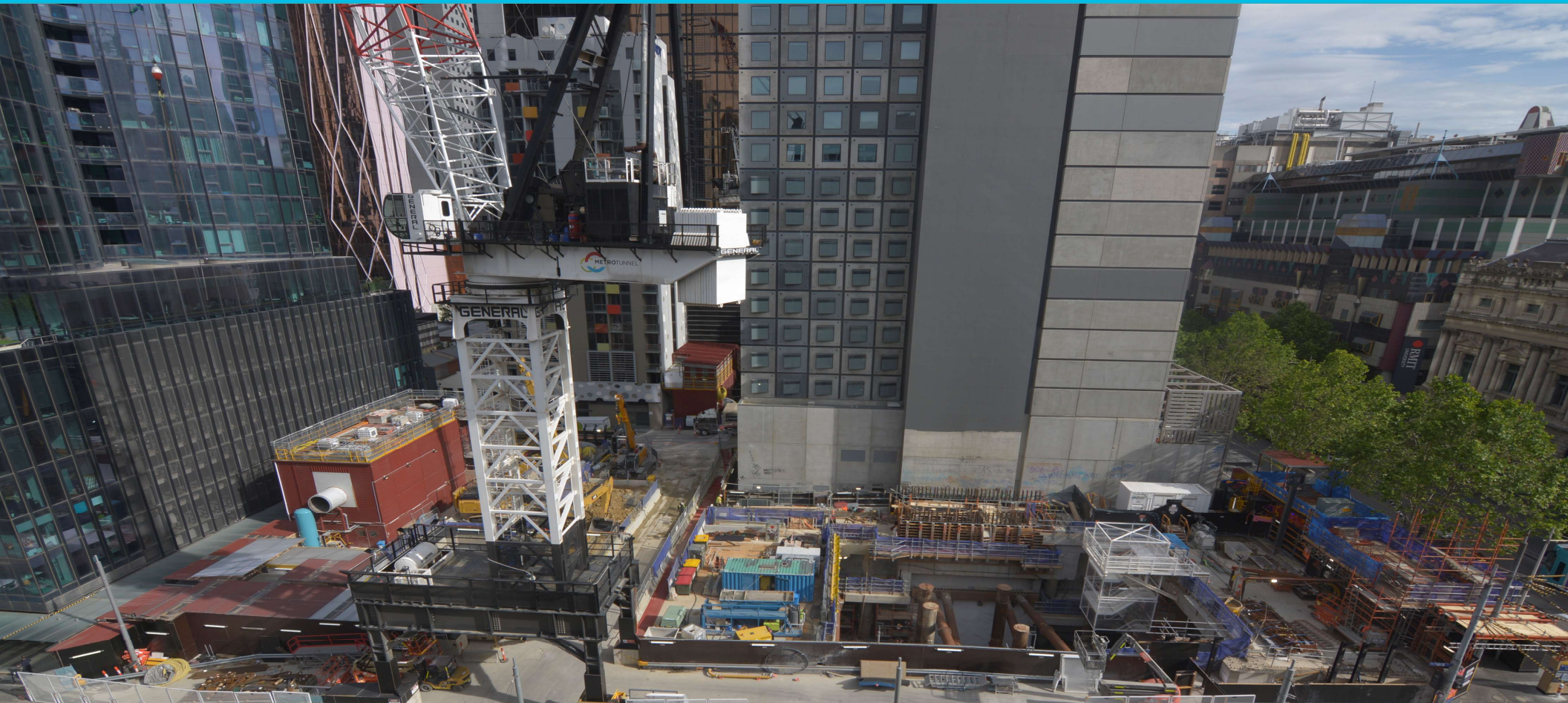
## FRANKLIN STREET SITES



*Underneath Swanston Street between the Franklin St sites*



## LA TROBE STREET SITE





## LA TROBE STREET SITE



### **Shaft construction**

(Excavation, excavated material removal, steel fixing, concrete pours and deliveries)

- Monday to Fridays, 7am to 3am
- Saturdays, 7am to 6pm

### **Temporary shaft removal**

(Excavation using a hammer attachment)

- Monday to Fridays, 7am to 8pm
- Saturdays, 7am to 6pm

### **Concrete finishing works and oversized deliveries**

- Monday to Saturdays, 10pm to 7am (as required)

### **Swanston Street concrete pump operation**

- Monday to Sundays, 24 hours (as required)

### **Little La Trobe Street concrete pump operation**

- Monday to Saturdays, 7am to 6pm



*B3 level excavation*

## LA TROBE STREET SITE



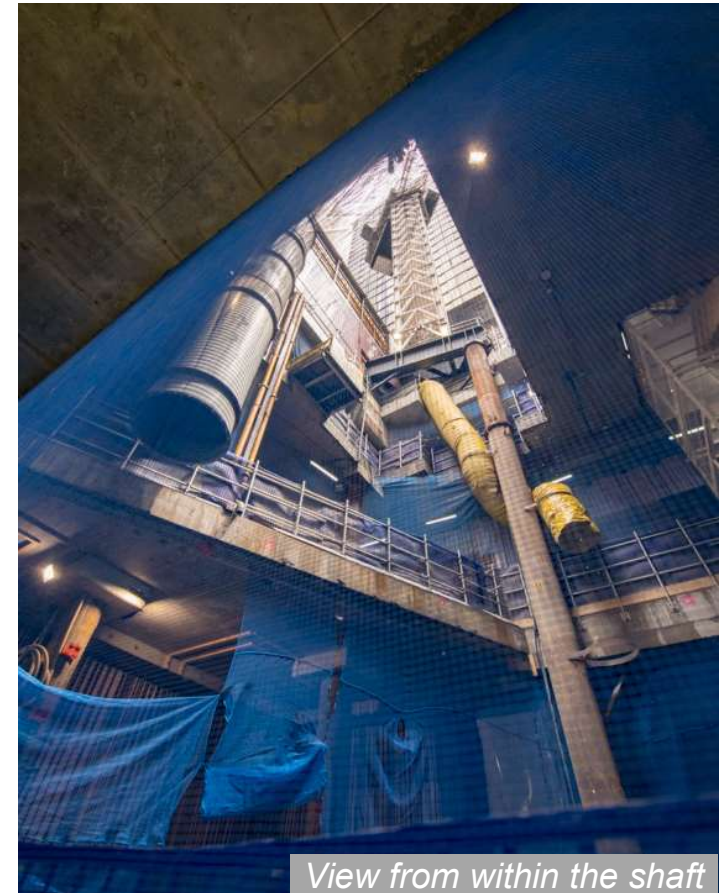
*Struts running between plunge piles*



## LITTLE LA TROBE STREET SITE



B4 level excavation



View from within the shaft

## LITTLE LA TROBE STREET SITE



### **Shaft construction works**

- Monday to Fridays, 7am to 10pm
- Saturdays, 7am to 6pm

### **Pile hammering**

- Monday to Fridays, 8am to 4pm

### **Concrete finishing works and oversized deliveries**

- Monday to Fridays, 10pm to 7am (as required)

### **Southern Little La Trobe adit excavation**

- Monday to Fridays, 24h, resuming in late November

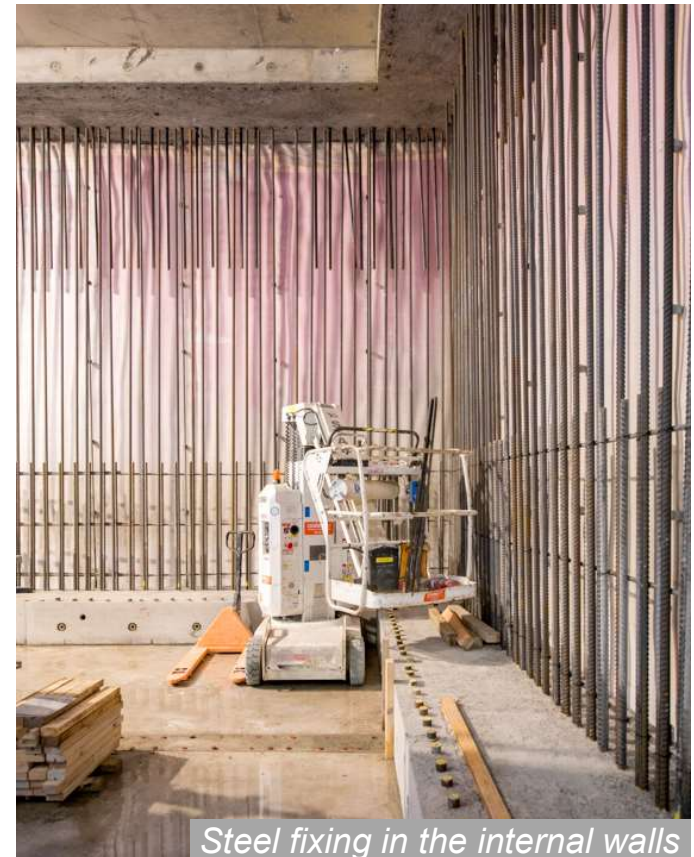




## LITTLE LA TROBE STREET SITE



- Excavation at the B4 level is underway within the Little La Trobe Street shaft
- Reinforcement works will now take place on the B3, B2 and B1 level walls
- Later in November, 24 hour works will recommence to construct the adit – an underground passenger connection between La Trobe and Little La Trobe streets



*Steel fixing in the internal walls*



# Questions