



Department of Environment, Land, Water and Planning

PO Box 500, East Melbourne,
Victoria 8002 Australia
delwp.vic.gov.au

Mr Duncan Elliott
Chief Executive Officer
North East Link Project
GPO Box 4509
MELBOURNE VIC 3001

Dear Mr Elliott

NORTH EAST LINK PROJECT – BULLEEN PARK AND RIDE, AMENDMENT TO DETAILED PLANS

I refer to the request from North East Link Project (NELP) of 16 November 2021 for approval of amended detailed plans attached to the *Bulleen Park and Ride Urban Design and Landscape Plan, March 2021*, (UDLP).

Approval of the amended detailed plans is required in accordance with the *North East Link Project Incorporated Document, December 2019*.

I advise that, under delegation from the Minister for Planning, I have approved the amended detailed plans submitted by NELP.

A copy of the endorsed plans is enclosed. The amended detailed plans are considered to form a further attachment to the approved UDLP.

If you have any queries, please contact Ms Lorraine Dowsey, Manager, State Projects, State Project Facilitation, on (03) 8392 5594 or via email at lorraine.dowsey@delwp.vic.gov.au.

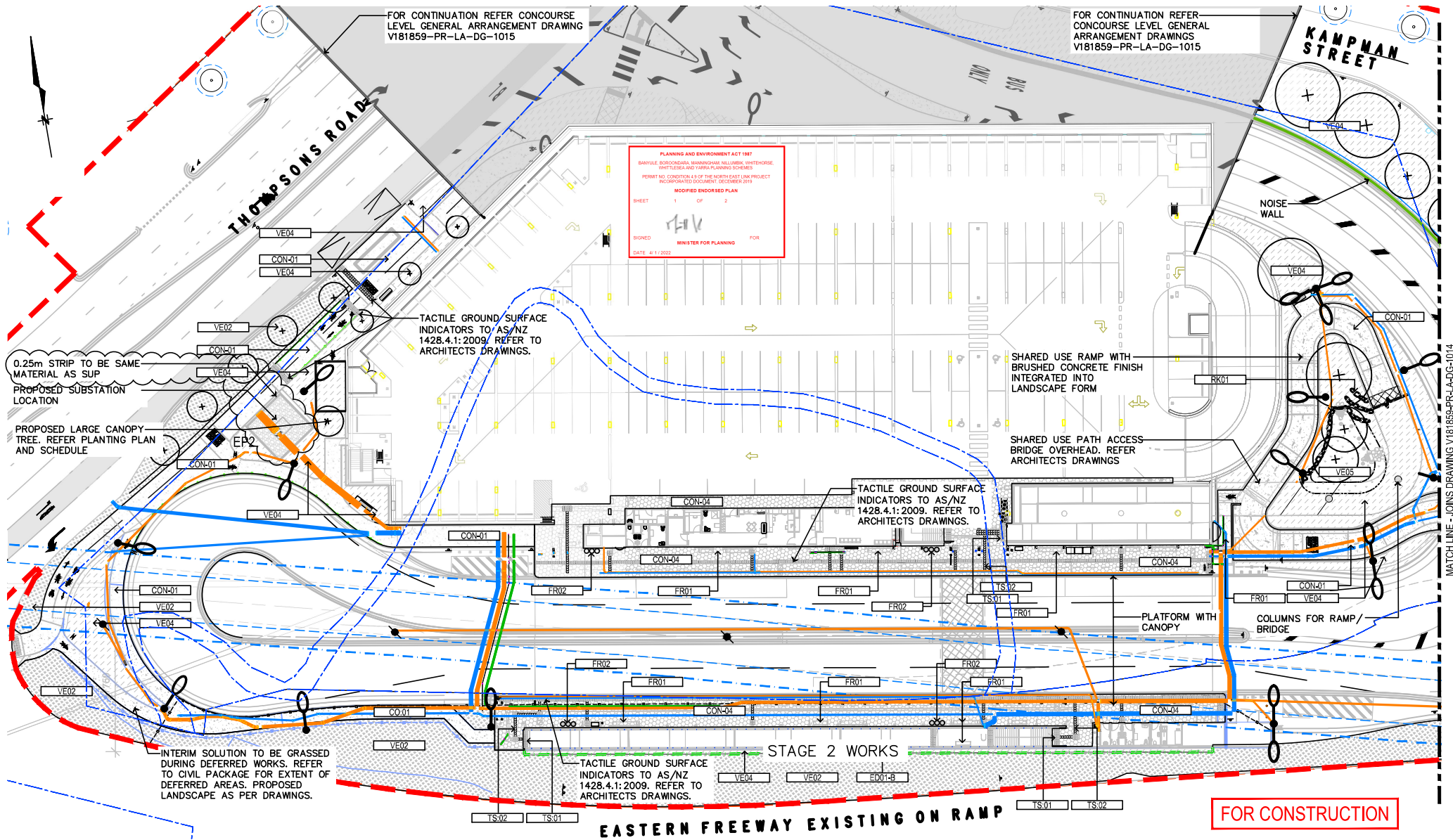
Yours sincerely

Matt Vincent
Acting Deputy Secretary, Planning

4 / 1 / 2022

Encl. Endorsed amended plans

(DATE)
(SIGNATURE)
(BLOCK LETTERS)
Certified By:



THIS DRAWING IS COLOUR CODED AND MUST BE PRINTED IN COLOUR
DRAWING PRECEDED BY NEL-EW-CDO-1500-ULO-DRG-0069

Consultant
NORTH EAST LINK
CPB CONTRACTORS
Security Classification: OFFICIAL: Sensitive
Franchisee / Lessee

This drawing has been prepared by, or compiled from information provided by, persons other than PTV. To the maximum extent permitted by law, PTV takes no responsibility for, and makes no representations in relation to, the completeness, accuracy or quality of any information contained in this drawing. Each user of this drawing releases PTV from all and any liability, damage, cost, expense or liability in relation to the use of, or any reliance on, this drawing or the information contained in it.

All written dimensions take precedence over scaled dimensions.

This drawing is provided only for the information of the person or organisation to whom PTV provides it. It may not be provided to, or used by, any other person without PTV's prior written consent.

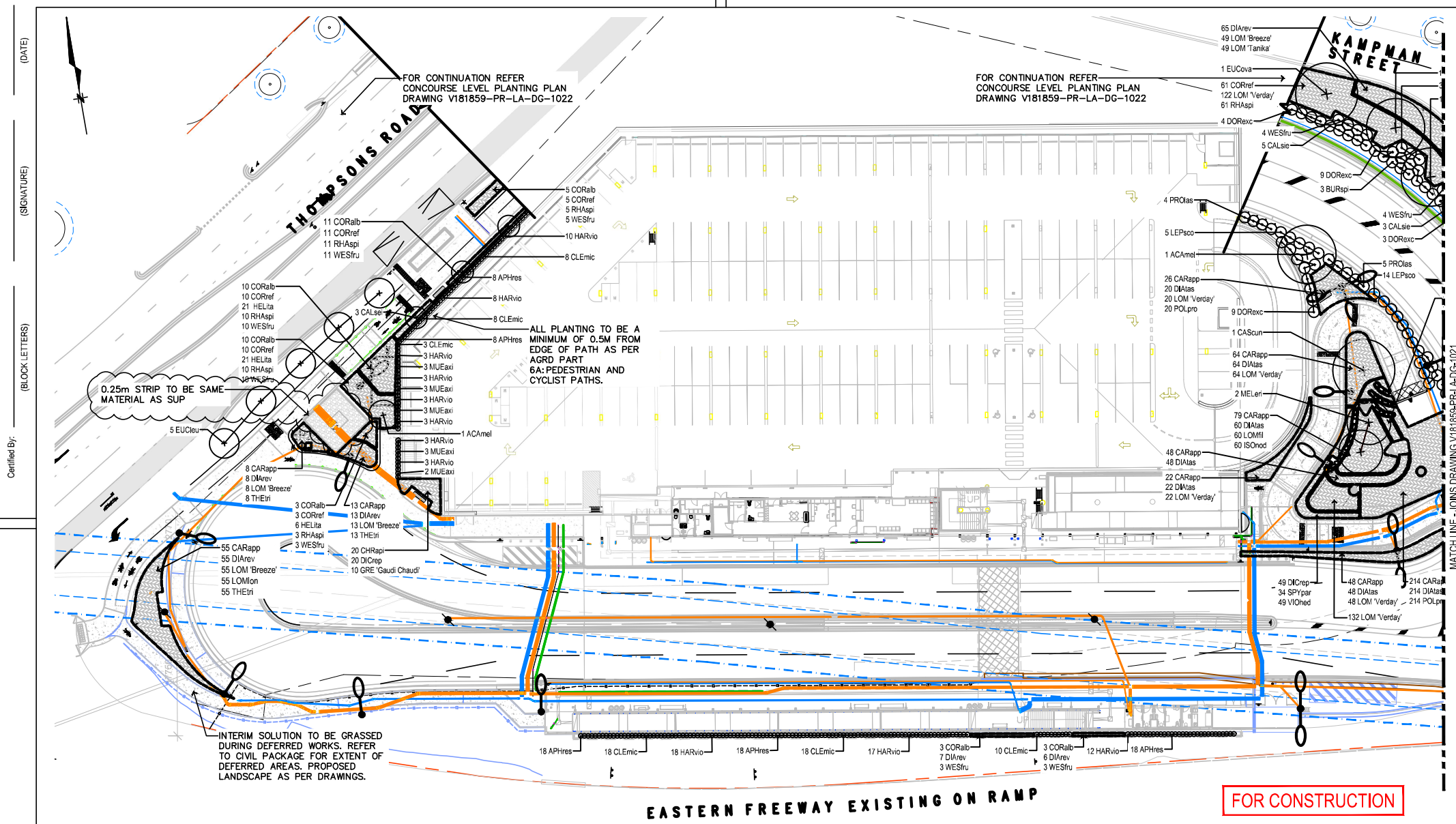
URBAN DESIGN & LANDSCAPE
BULLEEN PARK AND RIDE
LANDSCAPE - OPEN SPACE
GENERAL ARRANGEMENT
INTERMEDIATE LEVEL SHEET 01 OF 02

Up Location East. North. ID#
Down Location East. North. ID#
Datum GDA94 MGA Z55

North East Link Project Drawing Number
NEL-EW-CDO-1500-ULO-DRG-0120
Project Drawing Number
V181859-PR-LA-DG-1013

PUBLIC TRANSPORT VICTORIA
PTV
File Name
Sheet No. **01 of 02**
In Serv.
Scale 1:500 Sheet Size A3

Drawn By H. SWAN
Checked By G. VAGALA
Approved H. MCCORMICK
Designed By H. SWAN
Ind. Review M. SHEA
Approval Date 19/10/21
Drawing Number
Revision **2**



EASTERN FREEWAY EXISTING ON RAMP

FOR CONSTRUCTION



THIS DRAWING IS COLOUR CODED AND MUST BE PRINTED IN COLOUR
DRAWING PRECEDED BY NEL-EW-CDO-1500-ULO-DRG-0071



Security Classification: OFFICIAL: Sensitive
Franchisee / Lessee

This drawing has been prepared by, or compiled from information provided by, persons other than PTV. To the maximum extent permissible by law, PTV takes no responsibility for, and makes no representations in relation to, the completeness, accuracy or quality of any information contained in this drawing. Each user of the drawing releases PTV from all and any liability, damages, costs, expenses or liability in relation to the use of, or any reliance on, this drawing or the information contained in it.
All written dimensions take precedence over scaled dimensions.
This drawing is provided only for the information of the person or organization to whom PTV provides it. It may not be provided to, or used by, any other person without PTV's prior written consent.

URBAN DESIGN & LANDSCAPE
BULLEEN PARK AND RIDE
LANDSCAPE - OPEN SPACE
PLANTING PLAN
INTERMEDIATE LEVEL SHEET 01 OF 02
Up Location East, North, ID#
Down Location East, North, ID#
Datum GDA94 MGA Z55

North East Link Project Drawing Number NEL-EW-CDO-1500-ULO-DRG-0141		Project Drawing Number V181859-PR-LA-DG-1020	
Drawn By H. SWAN	Designed By H. SWAN	Checked By G. VAGALA	Ind. Review M. SHEA
Approved H. MCCORMICK	Approval Date 15/10/21	Drawing Number Revision 2	
File Name	Sheet No. 01 of 02	In Serv.	Scale 1:500
Sheet Size A3			

09/11/2021 11:53:38 AM

Revised By	In Serv	Rev.	Date	Description	Designed	Checked	Ind. Review	Approved
		2	15/10/21	ISSUED FOR CONSTRUCTION	HS	GV	MS	HM
		1	03/09/21	ISSUED FOR CONSTRUCTION	HS	GV	MS	HM
		0	08/06/21	ISSUED FOR CONSTRUCTION	AP	MA	MS	DW