



# COMMUNITY UPDATE

AUTUMN 2022  
**CRAIGIEBURN ROAD UPGRADE**

## We're upgrading Craigieburn Road to help you get home safer and sooner.

Over the coming months, activity will increase significantly along Craigieburn Road as we continue building new traffic lanes, upgrading intersections, and building new walking and cycling paths.

We've included some important information about how you can plan ahead and prepare for changes.

### Spotlight on Mickleham Road

Local drivers are a step closer to enjoying smoother and more reliable journeys, with major works on the

Mickleham and Craigieburn roads intersection now complete.

Since February, we've worked around the clock to upgrade the intersection, making it safer for all road users and improving connections between the community, businesses and public transport.

The intersection has now re-opened, with an additional lane in each direction. Over the coming months we'll continue to build new lanes, install permanent traffic lights, finish utility relocation and connections, and build new walking and cycling paths.

### Intersection upgrades

The intersection of Craigieburn Road and Mickleham Road is the first of seven intersections to be upgraded on this project, with traffic lights to be added to Balyang Way, Dorchester Street and Cimperwood Drive. Roundabouts will be replaced with traffic lights at Waterview Boulevard and Hardy Avenue.

To enable us to complete these works, there will be some traffic changes and major works at these intersections.

*Image: The upgraded intersection at Mickleham and Craigieburn roads.*

**1800 105 105**

contact@roadprojects.vic.gov.au  
Major Road Projects Victoria  
GPO Box 4509, Melbourne VIC 3001

Follow us on social media

     @roadprojectsvic



For languages other than English, please call 9209 0147

Please contact us if you would like this information in an accessible format. If you need assistance because of a hearing or speech impairment, please visit [relayservice.gov.au](http://relayservice.gov.au)

# Upcoming works

With major works now in full swing on the Craigieburn Road Upgrade, you'll notice a lot more activity on the road throughout 2022.

We've started utility relocation at the Hardy Avenue roundabout. After these works, we'll need to temporarily change how you access Walters Street, east of Hardy Avenue.

In June, we're planning major works at the intersection at Cimberwood Drive and Craigieburn Road to relocate water, sewerage, gas and power as well as starting road upgrading works.

During this time, we may need to work at night. We'll let directly impacted residents know in advance.

We've provided important changes for you below and you can stay up to date by reading our road variable signage and subscribing to our SMS and email services.

## WORK LOCATION

### Craigieburn Road: Hume Highway to Bridgewater Road

Hume Highway	One lane closed in both directions at times between Craigieburn Road West and Kingswood Drive for utility works and to install traffic signals.
Craigieburn Road at Benston Street	Eastbound lanes towards Hume Highway closed for electrical works. Drivers will be directed to the westbound lanes. Once complete, westbound lanes will close and drivers will be directed to the eastbound lanes.
Hardy Avenue to Healey Street	Left lane closed eastbound 24/7 for power relocation works. Craigieburn Plaza pedestrian crossing closed for power relocation works. Access at Hanson Road or Walter Street.

### Craigieburn Road: Bridgewater Road to Aitken Boulevard

Between Cimberwood Drive and Rayfield Avenue	We'll stop traffic at times along Craigieburn Road from May to September for utility relocation and installation works.
--	---

### Craigieburn Road: Aitken Boulevard to Mickleham Road

Waterview Boulevard	One lane closed eastbound from May to September for utility relocation and installation works.
Vantage Boulevard to Debonair Parade	We'll be working behind barriers while we build the new section of the road.
Debonair Parade at Craigieburn Road	We'll start major works to relocate and protect underground services.
Mickleham Road to Whites Lane	Traffic will move from the north lanes to the south lanes while we build the new section of road.

## PROJECT BENEFITS



Improved traffic flow and travel times



Better connections for the community and businesses in Craigieburn



Better access to the Hume Highway



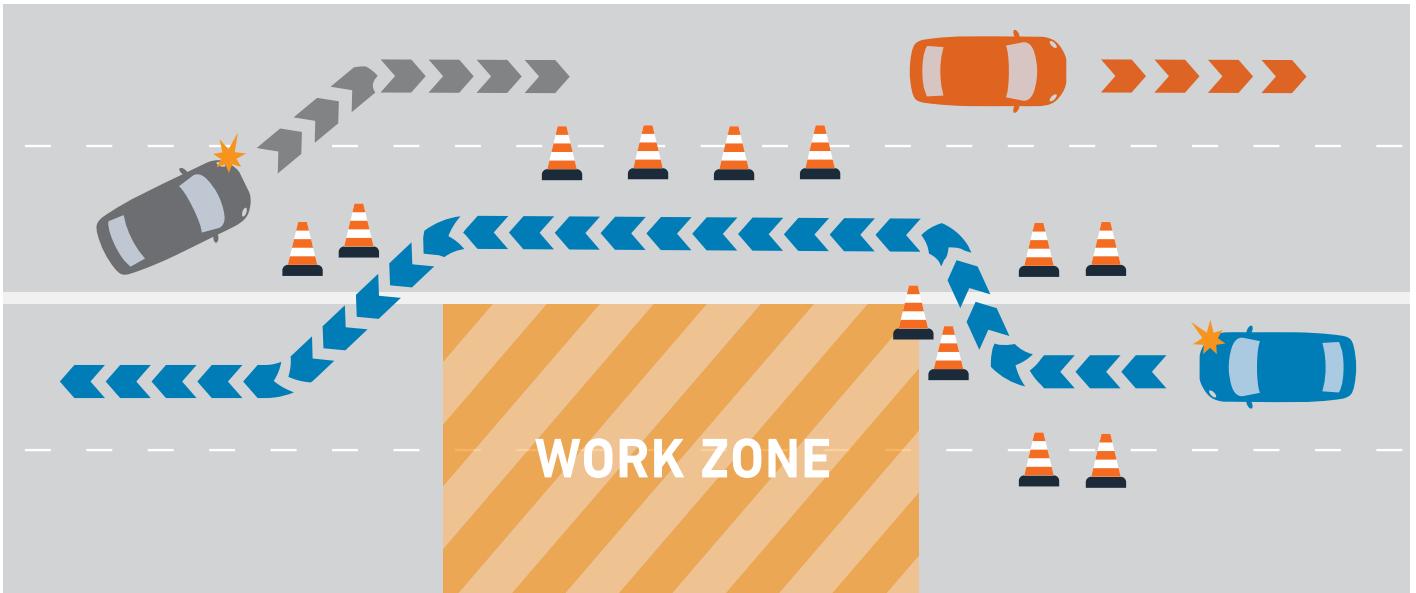
New and upgraded safety barriers to lower the risk and severity of crashes



Easier and safer walking and cycling options



Improved access to public transport



## Upcoming traffic changes

We'll continue to carry out long-term traffic changes on Craigieburn Road. This includes closing lanes and reducing speed limits for the remainder of the project.

Along sections of Craigieburn Road, we'll also move traffic from one side of the road to the other while we build the new lanes.

We call this 'traffic switching' and the first stage will be directing traffic from the northern (eastbound) lanes to southern (westbound) lanes.

### Important information

Please make sure that all drivers in your household or business are aware of the temporary changes to the traffic in your area. Be alert to temporary road signs and traffic management at all times.





## Other works in your area

Major Road Projects Victoria is planning and delivering the biggest investment in roads in the state's history. A number of these are priority upgrades for the Craigieburn, Greenvale and surrounding communities.

### Mickleham Road Upgrade

We're continuing important planning and development work for the upgrade of Mickleham Road, in Greenvale. The Australian and Victorian Governments have funded Stage 1 of the project between Dellamore Boulevard and Somerton Road. Funding has also been provided to progress planning and development works for the section between Dellamore Boulevard and Craigieburn Road.

### Somerton Road Upgrade

We're also preparing a Business Case for a potential future upgrade of Somerton Road, which is looking at ways to improve traffic flow and safety along 4.4km of Somerton Road between Mickleham Road and Roxburgh Park Drive.

For more information about MRPV projects visit [bigbuild.vic.gov.au](http://bigbuild.vic.gov.au)

## Changes to the way you travel

As part of the new design, how you access Craigieburn Road will change. Once the upgrade is complete, most local roads and property accesses will be changed to left in and left out only. Right turns and U-turns will only be possible at nearby signalised intersections or dedicated U-turn bays.

An access change fact sheet is included with this community update and provides further details about these changes.

## What can you expect

To complete our work safely, changes to speed limits and lane closures will be in place. Works may affect how you travel around the area including changes to parking and pedestrian detours.

We'll work between **7am and 6pm, Monday to Friday, and 7am to 1pm on Saturdays**. At times, we'll also need to work out of hours – both at night and on weekends. Where these works are expected to be noisy or affect access, we'll advise impacted residents and businesses.

## Mapping our progress

See the design and latest progress of the Craigieburn Road Upgrade at our interactive map. Visit [roadprojects.vic.gov.au/craigieburn](http://roadprojects.vic.gov.au/craigieburn) to access the map.

Stay informed by signing up for email and SMS updates by visiting [roadprojects.vic.gov.au/signup](http://roadprojects.vic.gov.au/signup).

Residents and businesses affected by our upcoming works will be contacted by our project team.

## Where to get information on disruptions

Visit [roadprojects.vic.gov.au](http://roadprojects.vic.gov.au) to subscribe to email updates or sms **CRAIGIE** to **0499 073 073**.

Visit [ptv.vic.gov.au](http://ptv.vic.gov.au) for changes to bus stops.

*Image: Works well underway on the improved Hume Highway connection.*



**SIGN UP FOR PROJECT UPDATES**  
[roadprojects.vic.gov.au](http://roadprojects.vic.gov.au)

Authorised by the Victorian Government, 1 Treasury Place, Melbourne

