



**LEVEL  
CROSSING  
REMOVAL**  
PROJECT

*One of the lifts being moved into place  
at Merinda Park Station*

# LEVEL CROSSING REMOVAL UPDATE

CRANBOURNE LINE  
UPGRADE

NOVEMBER 2021

## Cranbourne line works to finish almost a year ahead of schedule in 2022

The Victorian Government is investing more than \$1 billion to duplicate the Cranbourne line, remove the last three level crossings on the line and build a new Merinda Park Station – improving safety, reducing congestion and allowing for more trains, more often. Once complete, the Cranbourne line will be completely level crossing free.

It's been a big year on the Cranbourne line with 75 per cent of the new duplicated track already laid between Cranbourne and Dandenong and the recent opening of the pedestrian underpass at Merinda Park Station.

The duplicated track and fully rebuilt Merinda Park Station will now open in early 2022.

A timetable change soon after will mean trains every 10 minutes on average in the morning peak from Cranbourne, Lynbrook and Merinda Park stations and some Dandenong trains will run through to Cranbourne.

### Project benefits



Fewer delays and a more reliable service



Increased walking and cycling connections



Dedicated tracks in each direction for trains



Additional car parking



Paving the way for a rail extension to Clyde



**SIGN UP FOR PROJECT UPDATES**  
[levelcrossings.vic.gov.au](http://levelcrossings.vic.gov.au)

Authorised and published by the Victorian Government, 1 Treasury Place, Melbourne





New duplicated track being laid between Dandenong and Cranbourne

# MORE MAJOR MILESTONES AHEAD FOR THE SOUTH-EAST

To support the new duplicated track, we've built rail bridges at Eumemmerring Creek, Greens Road and Abbots Road and a second platform at Merinda Park Station.

With track now laid on all three rail bridges and the remaining 25 per cent to be laid by early 2022, the duplicated track and Merinda Park Station will be complete and fully operational close to a year ahead of schedule.

While we prepare for trains to run on the second track and fully open the new station to the public, we'll also remove the level crossing at Greens Road for good early next year, further easing traffic congestion in Dandenong South.

Major track works are also underway

in Dandenong where the Cranbourne and Pakenham lines merge, with construction on this section of the line also expected to be complete early next year. Once complete, these works will improve reliability and allow trains to run on time.

While this first phase of works on the Cranbourne line will finish ahead of schedule, major construction and planning continues to remove the remaining level crossings at Camms Road and Webster Street while we also complete other vital works on the line.



Piling to install overhead structures at Dandenong Station.

## A little bit of rail goes a long way

As part of the Cranbourne Line Upgrade, we'll build a new rail connection to support Victoria's growing freight industry in the south-east, with early works currently underway.

Once complete, the new rail connection will enable freight movements directly between the Port of Melbourne and Dandenong South by rail instead of road. This will reduce the volume of trucks on local roads, ease congestion and decrease freight transportation costs.

The new rail connection, known as a 'spur line', will be approximately 860 metres long and will connect to a future freight terminal in Dandenong South.

Building rail for freight to travel short distances is an opportunity to make a

real difference to the way freight moves around Melbourne, reducing truck numbers in the inner city, removing congestion around the port and giving industry a more cost-effective way to get their products to market.

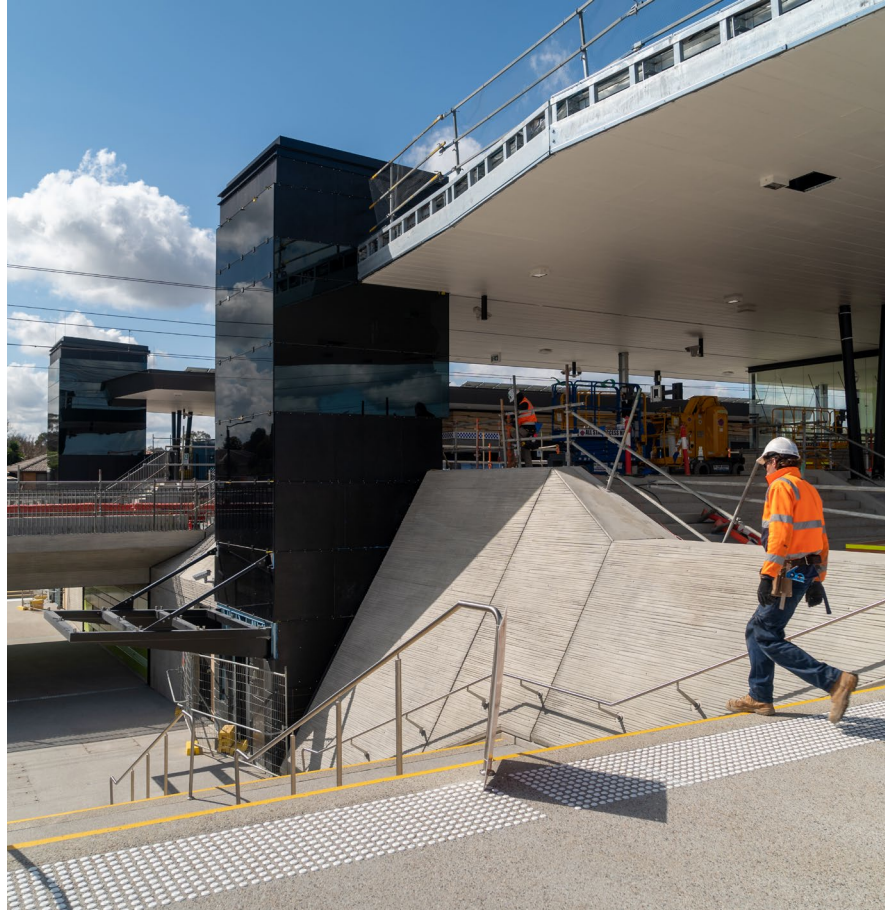
# NEW MERINDA PARK STATION TAKES SHAPE

Construction at Merinda Park Station is progressing rapidly as we hit yet more milestones – opening a new pedestrian underpass and the recent installation of lifts.

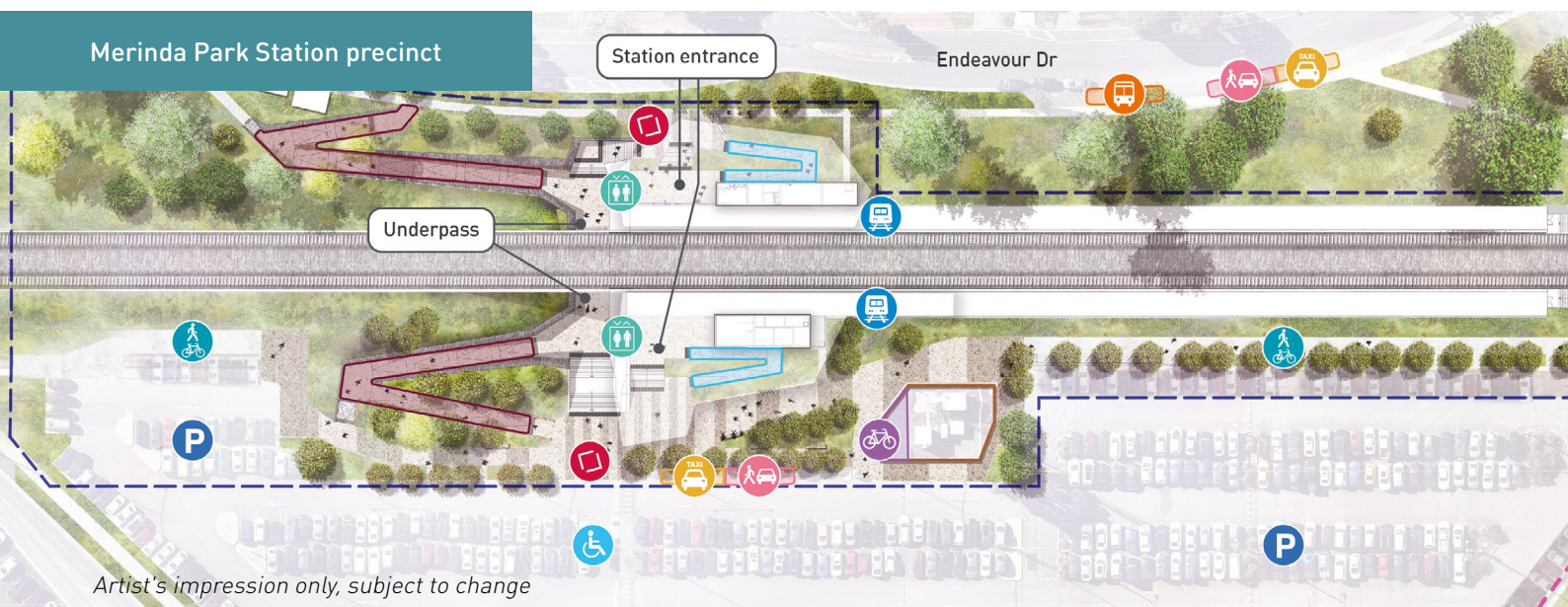
The new Merinda Park Station is on track to open in early 2022, with local residents and commuters already able to enjoy some of the station’s new features. This includes a recently opened pedestrian underpass that links Endeavour Drive with the Merinda Park Station car park.

With plenty of space, clear lines of sight, CCTV and fresh landscaping, the new underpass will provide an important pedestrian link, not only between platforms but as a safe path for locals to cross the rail line.

The new station will have two new platforms and improved access, including lifts, as well as stairs, ramps, a new station entrance and better weather protection for passengers.



*Image: View of the new lifts and entrance to the pedestrian underpass*



*Artist's impression only, subject to change*

-  Bus stop
-  Taxi area
-  Pick up and drop off area
-  Station forecourt
-  Station platform
-  Lift
-  Shared cyclist and pedestrian path
-  Bike parking
-  Car park
-  Disabled car park
-  Ramps to platforms
-  Ramps to underpass

# A new road bridge at Camms Road

The dangerous and congested level crossing at Camms Road will be removed by building a road bridge over the Cranbourne line.

Early site investigations will continue at Camms Road until major works begin on the new road bridge in 2022.

## Building a road bridge at this site:

- reduces impacts to train services parked overnight and maintained at the Cranbourne stabling yard.
- allows for future proofing for possible transport upgrades on the Cranbourne line, as well as a rail extension to Clyde.
- improves local connections by ensuring surrounding streets and paths are better connected.
- enables urban design improvements through community input into elements of the road bridge design and landscaping.

## Community feedback

Earlier this year we asked the community to provide feedback on how they move through the area, and to share their thoughts on urban design elements of the project.

Thank you to everyone who provided feedback. There was a high level of community interest in the project, with a total of 545 comments received.

- 165 online surveys were received
- 1775 visits to our Engage Victoria platform
- 3078 email updates were distributed to subscribers

The key themes emerging from the feedback include:

- safety
- pedestrian and cyclist connections
- landscaping
- the overall design.

Later this year, we'll present the final designs to the community as we prepare for construction to start in early 2022.

## Cranbourne line upgrade project timeline

- ✓ **2018**
  - Abbots Road level crossing removed
- ✓ **2020**
  - Evans Road level crossing removed
- ✓ **2021**
  - Merinda Park Station platform two opens
  - Cranbourne line track duplication underway
- **2022**
  - Greens Road level crossing removed
  - New Merinda Park Station complete
  - Track duplication complete
- **2024**
  - Camms Road level crossing removed
- **2025**
  - Webster Street level crossing removed

*\*Timeline above subject to change*

*The new Camms Road bridge spanning over Fairfield Street and the Cranbourne line – artist impression only, subject to change*



## CONTACT US

[contact@levelcrossings.vic.gov.au](mailto:contact@levelcrossings.vic.gov.au)

1800 105 105

Level Crossing Removal Project  
GPO Box 2392, Melbourne VIC 3001

Follow us on social media  
[@levelcrossings](https://www.facebook.com/levelcrossings)



Translation service – For languages other than English, please call 9209 0147.

Please contact us if you would like this information in an accessible format.

If you need assistance because of a hearing or speech impairment, please visit [relayservice.gov.au](http://relayservice.gov.au)