



**REGIONAL
RAIL REVIVAL**

GEELONG



South Geelong to Waurn Ponds Duplication

Landscaping design update South Geelong Station and Fyans Street

The South Geelong to Waurn Ponds Duplication project will enable more frequent services, as well as creating new green open space and landscaping that will reflect and enhance the local area.

We know that trees and vegetation are really important to the local community.

A major tree planting and landscaping program will commence as soon as construction on the project is complete and the trees and plants can be protected.

In response to feedback and to meet our environmental obligations on the project, native trees and plants will be used to enhance the local area and improve biodiversity.

We have engaged the Wadawurrung Traditional Owners Aboriginal Corporation and City of Greater Geelong to work together on the landscape plans and on climate resilient planting.

Through this process, we developed principles that have informed the landscaping and project design, including:

- greening the corridor
- consideration of water movement
- strengthening biodiversity
- promoting the area as a destination for wildlife
- sustainable use and selection of materials
- opening views across landscapes for commuters
- integrating Wadawurrung stories, graphics and language in signage and artworks for the project
- improvements to cycling and pedestrian amenity
- new and enhanced public spaces to gather.

Trees, shrubs and grasses will be planted in the station precincts and along the new walking and cycling path once construction is complete. There will also be extensive new planting around Fyans Street rail bridge, creating a green buffer between residents and the rail line, with a minimum of two trees planted for every one removed.



Australian Government





South Geelong Station concept image

South Geelong Station landscaping approach

New landscaped station forecourts will greet commuters as they walk toward the northern and southern station entrances.

Layered vegetation of mature trees, low lying shrubs and lawn will assist to enhance amenity and moderate climate while providing food and important habitat for wildlife.

Car parks can create challenging environments for many tree species to survive. The native trees selected for the car park will maximise canopy and shading and grow to a healthy size.

South Geelong Station landscaping illustration



South Geelong Station to Fyans Street rail bridge landscaping approach

Walking and cycling path landscaping approach

Planting along the walking and cycling path will vary across the project, tailored to the surroundings and requirements. Feature planting will mark important intersections along the path. The new landscape features shade, seating, cycling amenities and wayfinding.



Example of landscaped walking and cycling path (image of the Toorak Road level crossing removal and shared user path <https://bigbuild.vic.gov.au/projects/level-crossing-removal-project/projects/toorak-road-kooyong>)

Planting along Carr Street

A significant number of trees will be planted along the residential side of Carr Street, providing screening for residents and new habitat for fauna.

A mix of varied-height shrubs, grasses and low-lying plants that form ground cover will help to soften the infrastructure and provide a green screen between the new rail corridor fence, residents and walking and cycling path.

Replanting along Strong Street in South Geelong will also enhance this stretch of the rail line.



Fyans Street concept image - view from Wood Street



Fyans Street landscaping concept image - view from Breakwater Road

Fyans Street rail bridge landscaping approach

A connected tree canopy will provide abundant greenery, and will encourage many forms of wildlife, including birds, to the area.

New open space beneath and next to the rail bridge will include a landscape mix of mostly indigenous plants, feature paving, lighting, and seating.

Larger trees will be planted along the rail line at this location to soften the new rail bridge.



Carr Street landscaping concept image - view from Helen Street

Reuse and repurposing strategy

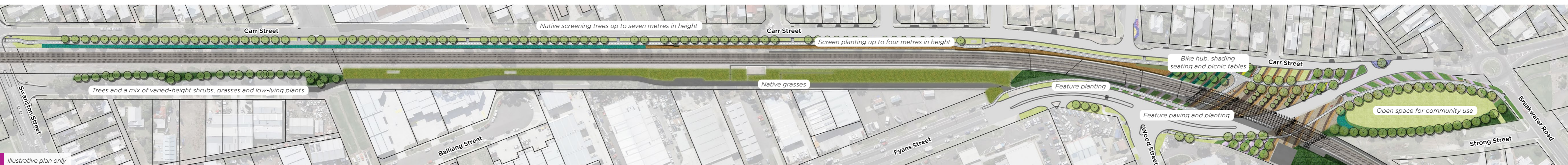
As part of our commitment to minimising impacts on the environment, we will be implementing opportunities to reuse trees and vegetation that have been removed, including:

- growing Yellow Gum seeds which were cultivated at the start of the project at the West Coast Indigenous Nursery to be replanted once construction is complete
- donating trees to local gardening clubs
- storing trees to be used as habitat logs as part of the landscaping plan

- tree burls donated to Wadawurrung Traditional Owners Aboriginal Corporation to be repurposed

- trees donated to local Men's Sheds for wood working and bird or possum nests
- donating excess mulch to community groups, schools and City of Greater Geelong Council.

Please contact us by calling **1800 105 105** or via email at regionalrailrevival@railprojects.vic.gov.au if you are a community group interested in logs or mulch.



Planting approach

The planting approach focuses on key landmarks along the rail corridor and within station precincts, improving amenity, ecological value and overall user experience.

A mix of varied height shrubs, grasses and low-lying plants that form ground cover will be used strategically along the corridor and at stations, to also soften the infrastructure, provide shade and create a diverse and interesting landscape for the community.

Native, climate-resilient trees and plants will make up a large component of the planting, to enhance the local area, improve biodiversity, and assist with sustainable water management along the rail corridor. These plantings will also provide habitat, shelter and food for native wildlife.

Trees are used to provide shade, break up the scale of the new infrastructure, mark important locations, provide informal wayfinding and enhance ecological value. Trees have been carefully placed to ensure maximum coverage while adhering to V/Line, Barwon Water and Department of Transport safety requirements.

Tree planting and landscaping will occur as soon as construction is complete on the project. Where possible, we will plant semi-established trees to provide immediate screening and habitat benefits. Some example species that will be used in the landscaping around the South Geelong Station and Fyans Street precincts can be seen below.



Yellow box
(*Eucalyptus melliodora*)



Narrow Coast Banksia
(*Banksia integrifolia* 'sentinel')



Golden Wattle
(*Acacia pycnantha*)



Coast Flax Lily
(*Dianella brevicaulis*)



Creeping Saltbush
(*Atriplex semibaccata*)



Purple Coral Pea
(*Hardenbergia violacea* 'meema')




Community chose 'native cornflower'
blue colour palette for the station.



After of tube stock planted during the
Carrum Level Crossing Removal Project

More information

 regionalrailrevival.vic.gov.au

 1800 105 105
(24 hours a day, 7 days a week)

Rail Projects Victoria
PO Box 2392, Melbourne, VIC 3001



Interpreter Service (03) 9209 0147

It should be noted that this information is current at the time of printing, however due to unforeseen circumstances, changes may occur. Please visit regionalrailrevival.vic.gov.au for the latest updates.