

MELBOURNE METRO RAIL PROJECT ENVIRONMENT EFFECTS STATEMENT
INQUIRY AND ADVISORY COMMITTEE

MMRA TECHNICAL NOTE

TECHNICAL NOTE NUMBER: 072
DATE: 6 October 2016
PRECINCT: All Precincts
EES/MAP BOOK REFERENCE: N/A

SUBJECT: Clarification of impacts on trees

NOTE:

1. Through the course of the hearing there have been decisions made which result in reductions on the number of tree removals. There have also been questions about the extent of tree removal and replacement in the project area that would have occurred in accordance with City of Melbourne Urban Forrest Plans independently of Melbourne Metro.
2. This Technical Note provides a summary of:
 - a. Tree savings from previous Technical Notes;
 - b. Trees identified for removal in City of Melbourne Urban Forest Precinct Plans;
 - c. Trees identified for removal under the draft Master Plan for University Square; and
 - d. Trees being removed which are considered weeds.

Tree savings resulting from previous Technical Notes

3. The changes in the following precincts as described in earlier Technical Notes result in up to 117 trees no longer being required for the project. Those Technical Notes include:
 - a. Technical Note 016, which states that the use of Fawkner Park was no longer required to launch and retrieve TBMs;
 - b. Technical Note 055, which states that an Emergency Access Shaft is no longer required at Fawkner Park;

- c. Technical Note 014, which states that properties located at 65 and 67-73 Swanston Street are no longer required as a potential station entrance; and
 - d. Technical Note 065, which states that MMRA proposes for the Melbourne Metro tunnel to be located below CityLink.
4. Precinct 1 – Tunnels - Fawkner Park
- a. As a result of the change presented in Technical Notes 016 and 055, all 69 trees in Fawkner Park assessed as impacted in the EES are no longer required for Melbourne Metro.
 - b. 62 trees were associated with the launch and retrieval of tunnel boring machines. (see Technical Note 016)
 - c. 7 trees were associated with the Emergency Access Shafts (see Technical Note 055).
 - d. The life stage of these trees in Fawkner Park have been identified as:
 - i. 17 Mature Long Term Viable Trees (“**MLTVs**”)
 - ii. 51 Juvenile
 - iii. 1 In Decline
 - e. Trees of particular community significance in Fawkner Park include:
 - i. F169 (a mature Lemon-scented Gum)
 - ii. F238 (a mature Bunya-Bunya Pine). The City of Melbourne Arborists specifically requested to retain this tree, as this is a highly significant tree.
5. Precinct 1 – Tunnels - Domain Parklands
- a. As a result of the change presented in Technical Note 065, 46 trees in Domain Parklands assessed as impacted in the EES are no longer required for Melbourne Metro.
 - b. Approximately 60 trees in Domain Parklands were associated with ground stabilisation works if the Melbourne Metro tunnels were to pass over the CityLink tunnels (see Technical Note 065). 46 trees of these trees were directly impacted by proposed grouting only. An additional 14 trees could be impacted by the Tom’s Block temporary access shaft location.
6. Precinct 6 – CBD South
- a. As a result of Technical Note 014, 2 trees on Swanston Street will be retained due to the properties located at 65 and 67-73 Swanston Street no longer being required.

- b. These trees (identified in the EES as CS039 and CS040) are both mature London Planes [*Planatus acerifolia*] with a Useful Life Expectancy (“ULE”) of 21-30 years.

Trees identified for removal in City of Melbourne Urban Forest Precinct Plans

7. The City of Melbourne Urban Forest Precinct Plans identified trees with a useful life expectancy of less than 10 years on St Kilda Road, Grattan Street and Royal Parade.
8. The St Kilda Road - The City of Melbourne South Yarra Urban Forest Precinct Plan 2013-2023 identifies a number of areas where trees will require replacement in the next ten years, including St Kilda Road. This is identified in Figure 1 below.



Figure 1 - Tree replacements required in next ten years (South Yarra Urban Forest Precinct Plan 2013-2023, page 20, figure 5)

9. The Royal Parade and Grattan Street - The City of Melbourne’s Parkville Urban Forest Precinct Plan 2015-2025 and Carlton Urban Forest Precinct Plan 2013-2023 identify a number of areas where trees would require replacement in the next ten years, including Royal Parade and some sections of Grattan Street. This is shown in Figures 2 and 3 below.
10. The Urban Forest Precinct Plans are available on the following websites:

- a. South Yarra Urban Forest Precinct Plan:
http://www.melbourne.vic.gov.au/SiteCollectionDocuments/UF_PP_South_Yarra_Precinct.pdf
- b. Parkville Urban Forest Precinct Plan:
<http://www.melbourne.vic.gov.au/SiteCollectionDocuments/ufpp-parkville-precinct.pdf>
- c. Carlton Urban Forest Precinct Plan:
http://www.melbourne.vic.gov.au/SiteCollectionDocuments/UF_PP_Carlton_Precinct.pdf



Figure 2 Tree replacements required in next ten years (City of Melbourne Parkville Urban Forest Precinct Plan 2015-2025, page 20, figure 5)



Figure 3 Tree replacements required in next ten years (City of Melbourne Carlton Urban Forest Precinct Plan 2013-2023, page 20, figure 5)

Trees identified for removal under the draft Master Plan for University Square

11. 57 trees within the Melbourne Metro construction footprint are also identified for replacement in the draft City of Melbourne University Square Master Plan.
12. These 57 trees are located in the northern end of University Square which is referred to as “the Plaza” (page 66 University Square Draft Master Plan – Part 2 Actions).
13. The University Square Draft Master Plan – Part 2 Actions provides an overview of the existing conditions in the Plaza. The draft Master Plan

identifies trees in the Plaza as “failed horticulture” as highlighted in Figure 4 below.

14. The City of Melbourne EES Submission also states that “The proposed tree removals in the University Square location would be in line with future City of Melbourne planned works and are of low concern” (section 1.3.4, page 15).
15. The City of Melbourne University Square Draft Master Plan – Part 2 Actions is available on the following website:
http://participate.melbourne.vic.gov.au/application/files/5914/7243/3628/University_Square_Draft_Master_Plan_-_Part_2_Actions.pdf

The Plaza and Grattan Street: existing conditions

- A hard-stand space with no shade.
- No activities.
- A walk-through space.
- Disconnected from the rest of University Square.
- Grattan Street is a large barrier and difficult to cross.
- A bleak, uninviting space with failed horticulture.
- The above ground car park infrastructure dominates the landscape.
- Grattan Street is a busy four lane road with multiple bus stops and a single crossing point between University Square and the University of Melbourne Gate 10. It is dominated by car infrastructure, is poorly lit and has few street trees.

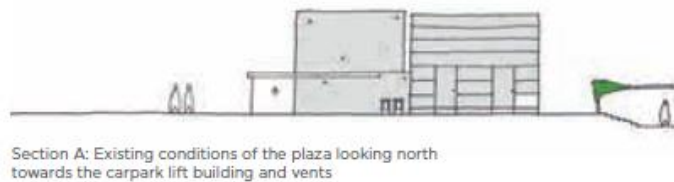
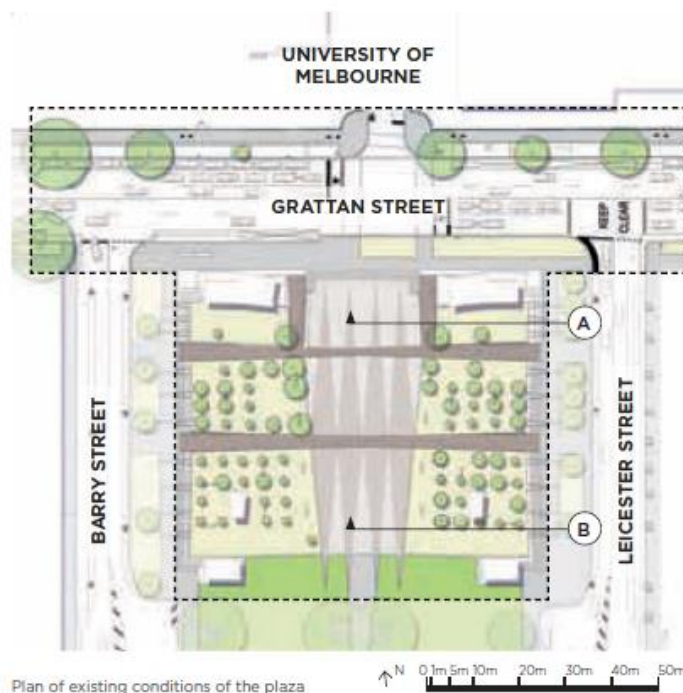


Figure 4: City of Melbourne University Square Draft Master Plan - Part 2 Actions

Trees being removed which are considered weeds

16. Trees assessed as impacted in the EES include 67 trees located within the Eastern Portal Precinct that are classified as declared or noxious weeds under the *Catchment and Land Projection Act 1994*. This includes:
 - a. 16 Elm Suckers, 50 Locust Suckers, and one Tree of Heaven which is a declared noxious weed.
17. These trees were not included in the total number of trees reported in the EES as they are considered to be an environmental hazard (See Technical Note 040, section 23 for more detail).
18. Some 59 trees in Arden Precinct that are also weed species were however included in the EES. This is because they are listed as potential environmental weeds but are not declared or noxious weeds.

CORRESPONDENCE:

No correspondence.

ATTACHMENTS:

No attachments.