

Machinery on the rail tracks at
Dublin Road, Ringwood East

Bedford Road, Ringwood | Dublin Road, Ringwood East, July 2023

Ringwood ramping up in August



Major works underway

We're removing the dangerous and congested level crossings at Dublin Road, Ringwood East and Bedford Road, Ringwood and delivering a brand-new Ringwood East Station by 2025.

We've settled into our new construction sites at Bedford Road and Dublin Road and have started early works as we prepare for major construction.

Dublin Road

We've set up construction sites at Ringwood East Station and have started installing the piles for the rail trench. Piles play an important role in making sure the walls of the trench are solid. See page 2 for more information on how piling is done.

Bedford Road

We've set up our construction sites at Rosewarne Lane and Bedford Road, with further work to continue. This includes establishing areas for storage of our materials and equipment.

Construction blitz in August

This will also be the first time you will see a glimpse of permanent construction around the area. There will be changes to the way you travel around the area with some temporary road and lane closures.

By 2025, the Lilydale Line will be boom gate free and the Belgrave Line will have no boom gates between Ferntree Gully and the city.



Upcoming disruptions

To find out about upcoming disruptions, scan the QR code.

Changes to the way you travel

Buses will replace trains on the Belgrave and Lilydale lines between Blackburn and Belgrave/Lilydale from **8.30pm Wednesday 9 August to last service Tuesday 15 August**

Bedford Road, Ringwood will be closed at the level crossing from **8pm Thursday 10 August to 6am Monday 14 August**

Dublin Road, Ringwood East will be closed at the level crossing between **10am to 8pm Thursday 10 August**

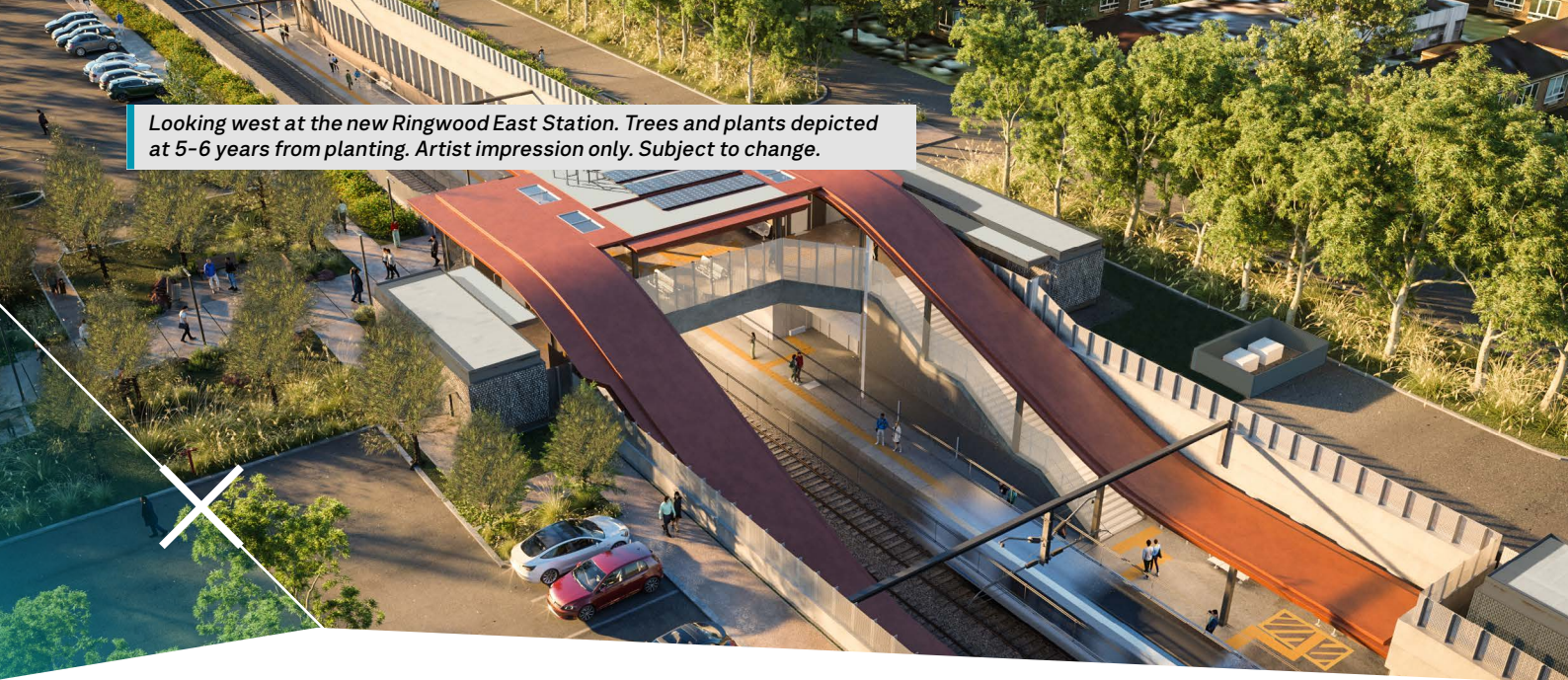
Dublin Road, Ringwood East will be closed at the level crossing from **Tuesday 5 September to Tuesday 17 October**



Sign up for updates
levelcrossings.vic.gov.au



Looking west at the new Ringwood East Station. Trees and plants depicted at 5-6 years from planting. Artist impression only. Subject to change.



Major works kicking off in August

From August, you can expect an increase in activity around the level crossings as major works ramp up.

You may have noticed more activity near Bedford Road and Dublin Road since we set up sites and started early works.

In the coming months, we'll be doing more investigations such as soil sampling and using non-destructive digging equipment to understand more about what's underground. This helps to inform the construction process as we prepare for major works.

During this period, we'll also install and relocate major underground services such as water, drainage, gas and rail signalling.

We've also begun piling works which involves drilling circular holes in the ground. Once these holes are drilled, we fill the holes with steel frame reinforcements and then fill them with concrete to create the foundations for the rail trench.

In the coming months, you may be impacted by road closures or disruptions to the Belgrave and Lilydale lines as detailed in the table on page 1. These works will be around-the-clock at times to minimise the duration of the disruptions, and access to Railway Avenue shops will be maintained.

Access to Ringwood Secondary College, local businesses and homes along Bedford Road and Rosewarne Lane will be maintained.

There will be limited parking available at Ringwood East Station. Alternative parking is available at Pratt Street, Ringwood – a 500 metre walk to Ringwood Station.

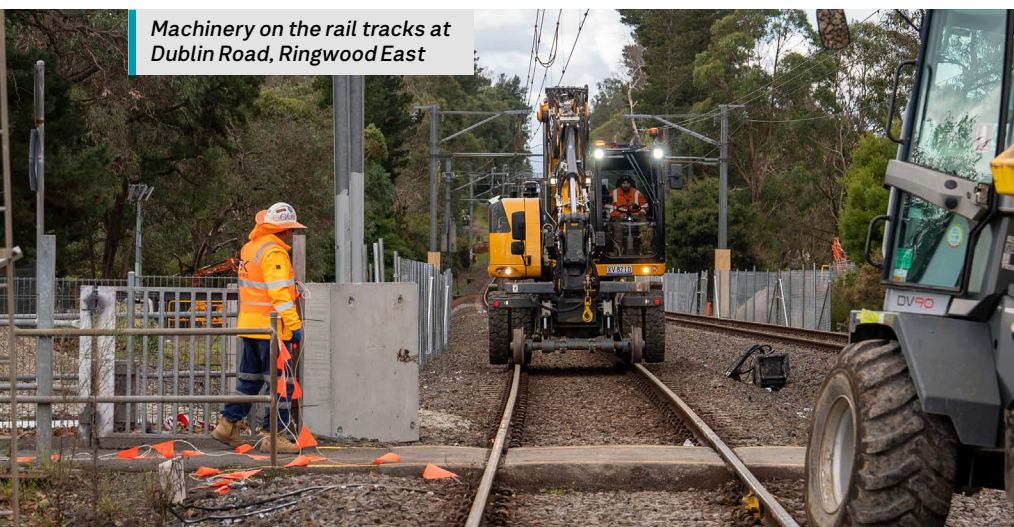
As we continue our work on these level crossing removals, we encourage you to sign up for regular email updates at bigbuild.vic.gov.au/contact/email-updates



Once complete, there will be:

- improved safety and less congested roads for more than 23,000 drivers everyday
- new and safer pedestrian and cycling paths including the new connection between Bedford Park and the Heathmont Rail Trail
- around 60,000 new native trees, shrubs and grasses
- a new Ringwood East Station with around 460 upgraded car parking spaces built to modern standards.

Machinery on the rail tracks at Dublin Road, Ringwood East



More about piling

For more information on piling at Dublin Road, scan the QR code

Local shops in Railway Avenue, Ringwood East.



Keep shopping local and be rewarded

Shops are still open while we work, so we encourage you to be rewarded for shopping locally with Stamp Me, our digital loyalty card app for Ringwood East!

We'll ensure access to local businesses is maintained and will continue to work closely with local businesses and the local traders' association.

Get involved with Stamp Me by spending \$10 or more in one transaction at participating shops and scan an in-store QR code at the time of purchase to get a stamp.

Once nine stamps are collected, shoppers will be rewarded with a \$10 voucher to be spent in the local area.

To be part of Stamp Me, scan the QR code to download Stamp Me from the app store, register an account and search for Ringwood East. Happy stamping!

If you're a local business that wants to get in touch, please call **1800 105 105** or email **contact@levelcrossings.vic.gov.au**



Stamp Me

Scan the QR code or visit <https://bit.ly/433edzS>

Seed collection: what is it and how do we do it?

Seed collection involves an ecologist identifying trees and assessing if there are seeds ripe and ready to collect.

The process plays an important role in the local environment. It can help increase biodiversity in the local area, as well as supporting local fauna with a food source, habitat and shelter.

Most seeds we've collected are indigenous in origin and have been identified as Eucalyptus species including wallaby grass and acacias.

Our team have successfully collected seeds in Dublin Road, Ringwood East

that have gone to local nurseries for propagation.

From our conversations and engagement with the community, we understand the importance of native vegetation and greenery to the local Ringwood community.

We'll work to retain as many trees as possible and will plant around 60,000 new trees, shrubs and grasses as part of the project.

Seed collection at Dublin Road, Ringwood East.





The new Ringwood East Station forecourt. Trees and plants depicted at 5-6 years from planting. Artist impression, subject to change.

Meeting our new neighbourhood

Thank you to locals for stopping by and having a chat with our team, whether it's been at the station, at the shops or at an event. We look forward to meeting more of you and encourage you to say hi the next time you see us!



Ringwood project pop up at 'Jazz by the Lake' earlier this year

Stay connected to the project

- Sign up for email updates via bigbuild.vic.gov.au/projects/level-crossing-removal-project/subscribe
- Follow Level Crossing Removal Project on social media
- Sign up for SMS alerts by texting **'RINGWOOD'** to **0428 387 902**



Project timeline



2022

- Project designs released
- Contract awarded



Early 2023

- Site establishment at Dublin Road
- Site establishment at Bedford Road



Mid-late 2023

- Major construction starts
- Final designs



2025

- Level crossings gone for good. Ringwood East Station opens.

* Timeline subject to change.

levelcrossings.vic.gov.au

contact@levelcrossings.vic.gov.au



For languages other than English, please call 9209 0147.

1800 105 105 (call anytime)

Please contact us if you would like this information in an accessible format. If you need assistance due to a hearing or speech impairment, visit relayservice.gov.au

