

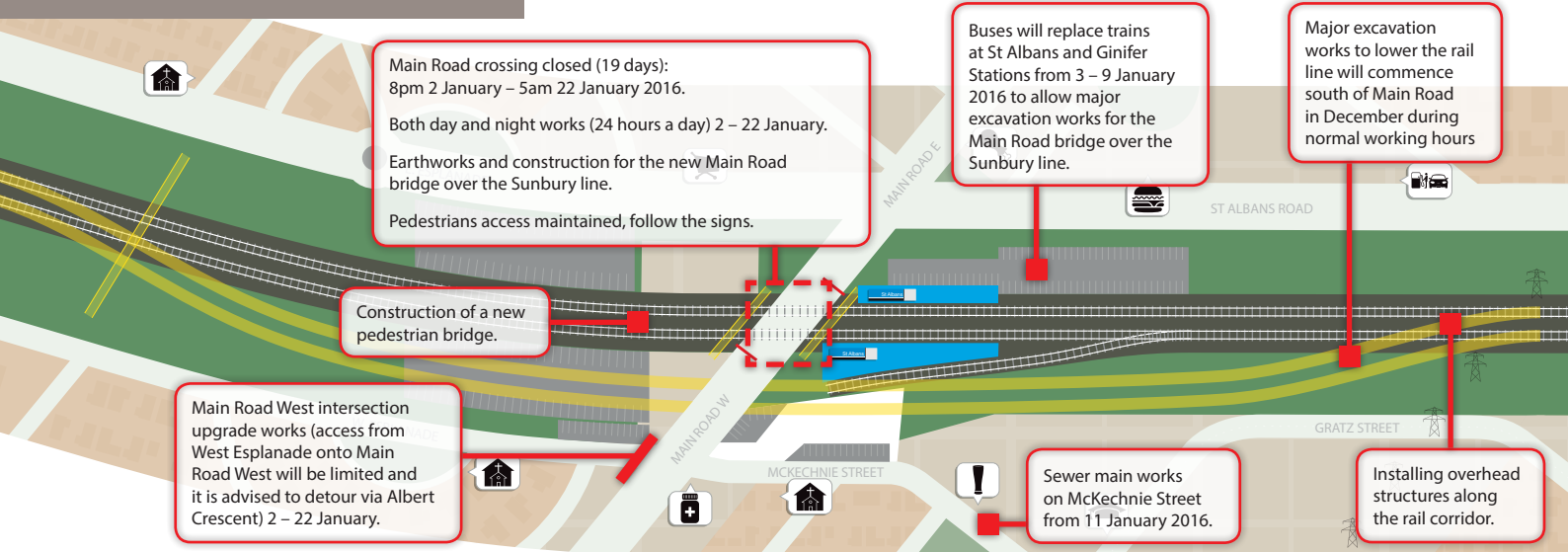


MAIN ROAD

COMMUNITY UPDATE 03

DECEMBER 2015

What's planned for December/January



CONTACT US

- levelcrossings.vic.gov.au
- furlong.main.lcrp@leicon.com.au
- 1800 762 667 (business hours Monday – Friday and during out of hours works)
- Level Crossing Removal Authority
GPO Box 4509
Melbourne VIC 3001

Follow us on social media @ levelcrossings



Translation service
For languages other than English,
please call 9280 0780

We are on track for the removal of the Main Road level crossing following a successful month in October. This includes building the new temporary Platform 2 at St Albans Station, site establishment and drilling and constructing concrete foundations. We appreciated your patience during these works and the road closures that followed in November.

The main focus for the coming months is earthworks to lower the rail line and construct the Main Road bridge. We are fast-tracking these works to ensure the trains are back up and running for the celebrations of St Albans' Lunar Festival on Sunday 10 January.



**LEARN MORE AT OUR COMMUNITY
INFORMATION SESSIONS – Details overleaf
SIGN UP FOR UPDATES – levelcrossings.vic.gov.au**

THANK YOU!

The Main Road Level Crossing Removal Project thanks you for your patience as we remove the dangerous and congested level crossing at Main Road, St Albans.

In October, at Main Road our crews worked more than 6000 man hours, excavated over 2700 cubic metres of soil and installed 40 tonnes of structured steel to prepare site foundations and successfully build the new temporary platform at St Albans Station.

These works have helped us to undertake major construction to remove the level crossing while minimising disruption to rail customers.

POP ALONG TO OUR POPUP SESSIONS

Join us on the following days at Sam's Market and St Albans Station to view project designs, updates and ask any questions about the project:

Sam's Market:

Thursday 17 December: 9am – 12noon

Friday 18 December: 9am – 12noon

St Albans Station:

Tuesday 22 December: 6am – 9am



Changes for train customers

The following changes apply to train services on the Sunbury line during early January 2016. For updates and full details visit ptv.vic.gov.au or call 1800 800 007 (6am – midnight).

From approximately 3am Sunday 3 January 2016 – Saturday 9 January 2016

As part of Main Road level crossing removal works:

- Buses will replace Metro trains between Sunshine and Sunbury. Journey times may increase by up to 35 minutes.
- Coaches will replace V/line Bendigo trains between Melbourne to Gisborne.
- Trains will continue to run between Gisborne and Bendigo/Echuca.
- Coaches will replace Swan Hill trains between Melbourne and Bendigo.
- Trains will operate between Bendigo and Swan Hill. Please allow an extra 30 minutes for the journey.
- Trains will be operating for St Alban's Lunar Festival on 10 January.

Car parks and bus stops

- From Friday 27 November – 40 car spaces in West Esplanade Station car park will be closed permanently to build the new pedestrian bridge. More parking is available for train customers at the rear of St Albans Hotel car park
- Mid-December – A temporary bus turnaround bay will be built on McKechnie Street to cater for the bus turning circle when the existing bus interchange temporarily moves onto McKechnie Street.
- 11 car spaces on Main Road West (near West Esplanade intersection) will be closed temporarily from Saturday 2 January – Friday 22 January 2016 to allow road improvement works.

Works at Furlong Road Level Crossing

We are excited to get works started at Furlong Road and Ginifer Station. You may have noticed temporary fencing is up to protect native flora and fauna, and we have been busy establishing the site with upgrades to sewer mains, excavation and drilling works. In December crews will be on site to prepare the area north of Furlong Road by installing a rail corridor access track to enable safe excavation works to begin to lower the rail line.

What to expect next year?

Buses will replace trains on the Sunbury line between Sunshine and

Sunbury from approximately 3am Sunday 3 January until Saturday 9 January 2016.

There are no trains running to:

- allow demolition of sections of station buildings on Platform 2 at Ginifer Station
- enable utilities service relocations activities for gas, optus and waterlines
- construct retaining walls to build the new Ginifer Station concourse and Mulhall Drive pedestrian bridge
- excavation and track works from Ginifer station to Western Ring Road.

4 February 2016 – Furlong Road crossing closed

- 8pm Thursday 4 February – 5am Monday 8 February: Furlong Road crossing will be closed to allow for excavation and drilling pedestrian access for the bridge foundations.

27 March 2016 – Furlong Road crossing closed

- Sunday 27 March – Sunday 10 April 2016: crossing will be closed to allow construction of the bridge deck over the rail line.

levelcrossings.vic.gov.au



Australian Government

BUILDING OUR FUTURE

