



DOMAIN PRECINCT

Community Reference Group

Presentation by CYP

14 February 2024





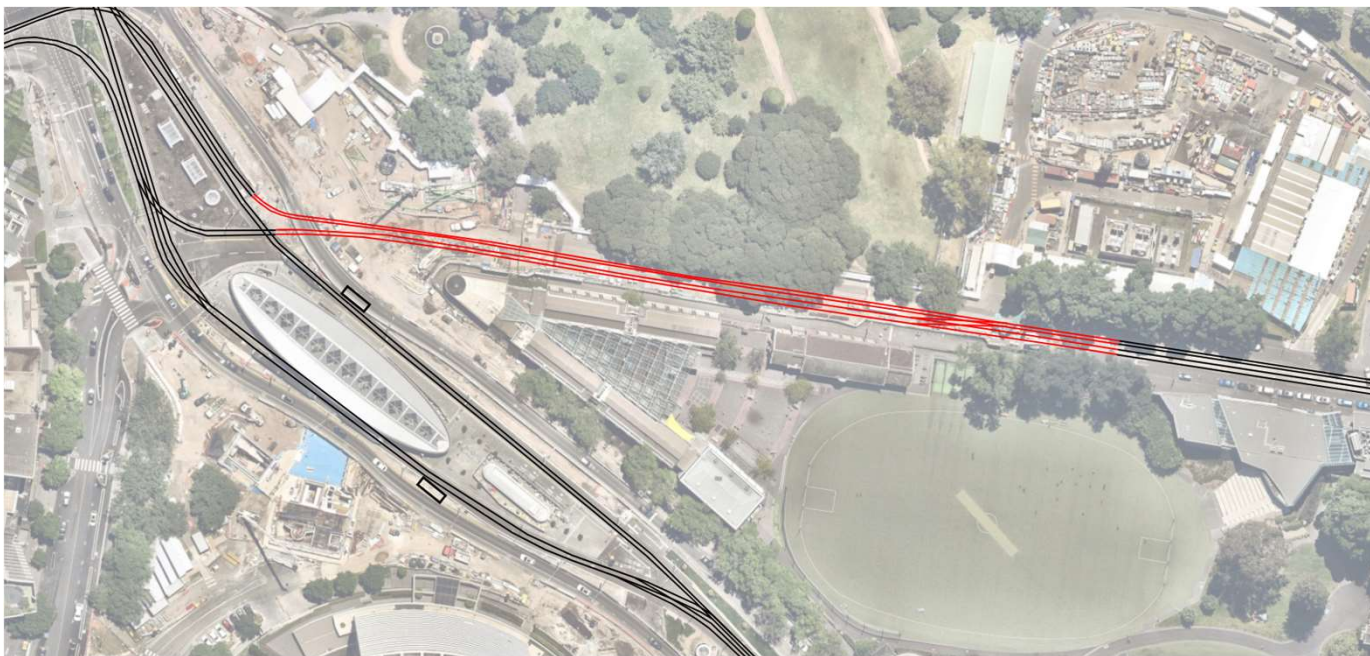
WORKS UPDATE: STATION CONSTRUCTION

WORKS LOOK-AHEAD

DOMAIN ROAD TRAM TRACK CONNECTION



- In April 2024, works will commence to connect the St Kilda Road tram tracks through to Domain Road
- This will involve a one week shut of St Kilda Road south bound
- These works are currently being planned to coincide with the April school holidays
- Trams will continue to operate during the works, however there will be some traffic and pedestrian detours in place
- Further details will be provided closer to the works.



Domain Road track installation scope

WORKS UPDATE

STATION WORKS



- Installation of myki gates underway at concourse level. Fitout has commenced for the retail spaces, as well as the MTM customer areas on concourse level
- Back of house works continue, including testing and commissioning of key rooms by RNA
- Platform works are largely complete, with installation of the stonework for line-wide artwork also nearing completion

Works at concourse and platform level

WORKS UPDATE

SHRINE OF REMEMBRANCE ENTRANCE

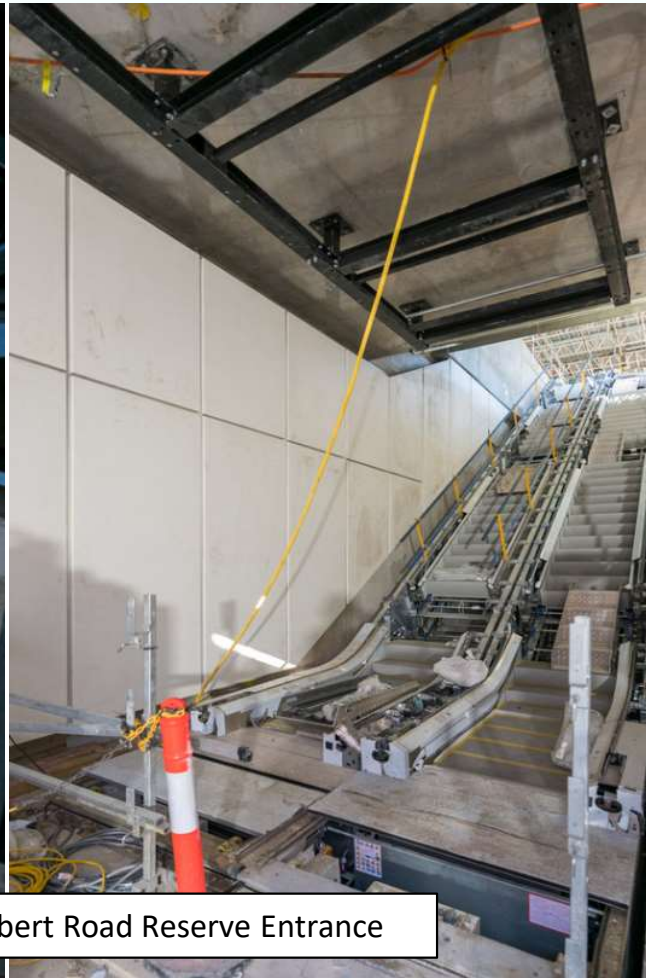
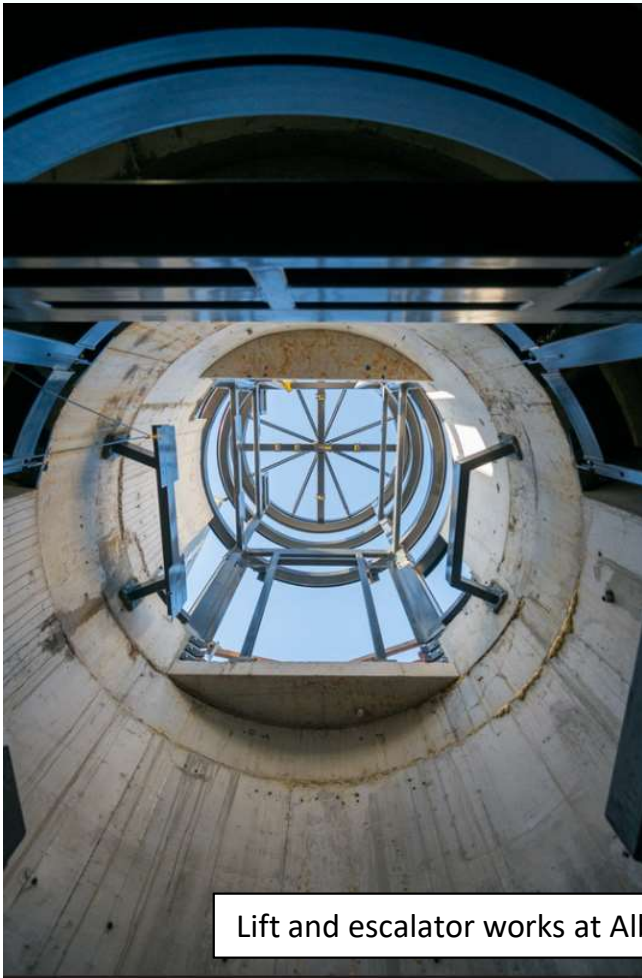


- Canopy works for the Shrine of Remembrance entry are nearly complete and works are underway on the installation of balustrades and fittings
- Testing and commissioning works are underway for the public lift
- In the coming weeks works will commence on the public realm area around the new entrance.

Works on the canopy and lift shaft

WORKS UPDATE

ALBERT ROAD RESERVE STATION ENTRANCE

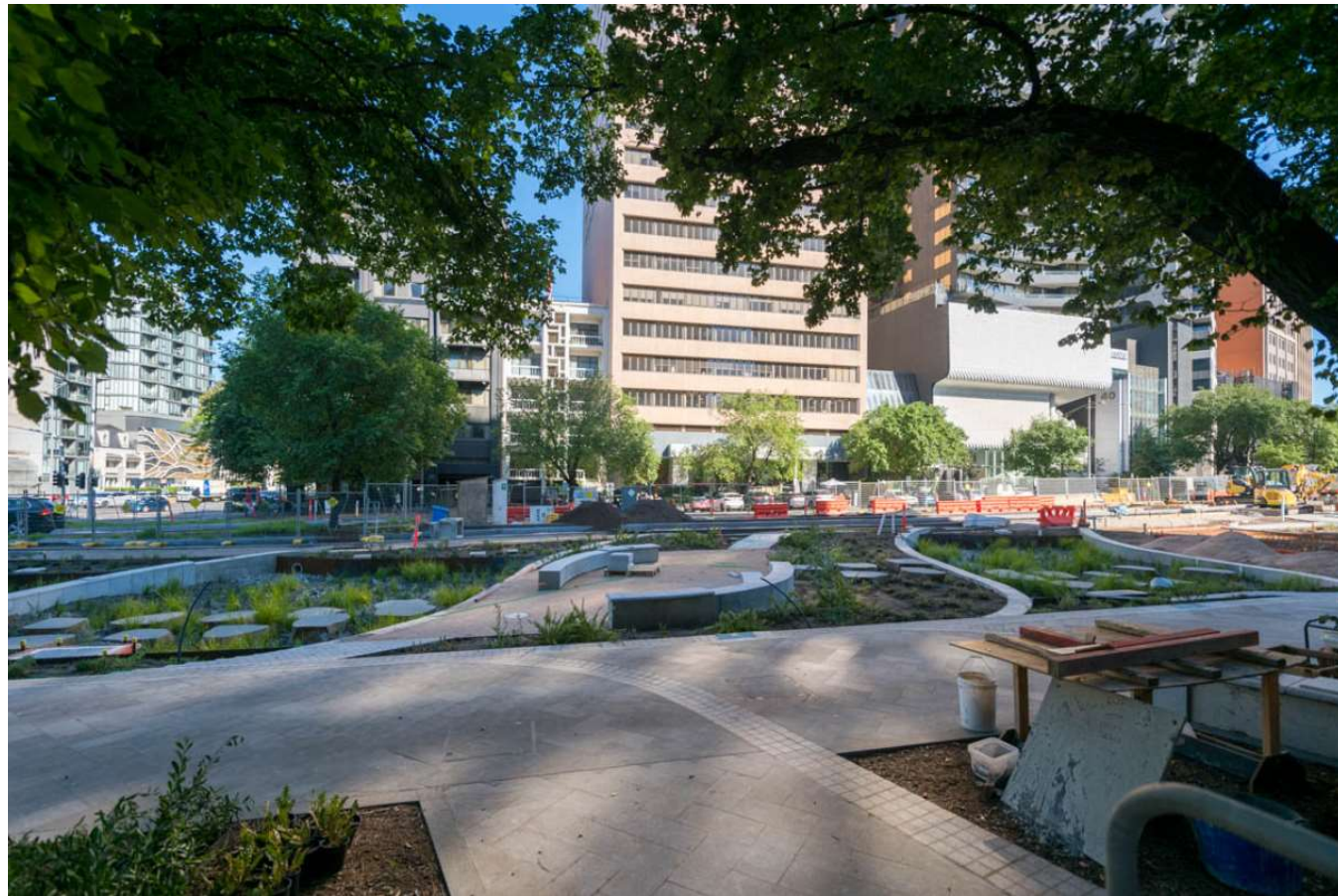


Lift and escalator works at Albert Road Reserve Entrance

- Works to fitout the two new elevators are underway
- Once complete, the goods lift to the station will be used to transport materials to site and the final void in the station roof will be filled in
- The scaffold surrounding the entrance canopy is now being removed and works will commence on the balustrades around the entrance
- The base slab for the South African Soldiers' Memorial is currently being poured
- The cathedral stone from the monument will be removed from storage and brought to site progressively over the coming weeks.

WORKS UPDATE

ALBERT ROAD REINSTATEMENT



Landscaping works nearing completion

- Public realm works in Albert Road are now largely complete. Fencing will be removed over the coming weeks
- The last remaining works on the roadway include:
 - Commissioning of traffic lights at the intersection of Albert Road and St Kilda Road (removal of zebra crossing)
 - Commissioning of the angled car parks on Albert Road
 - Opening of the west bound bike lane in the final alignment.

WORKS UPDATE

LEGACY PAVEMENT WORKS – BOWEN LANE TO ALBERT ROAD



Pedestrian footpath resurfacing area


- Construction of the bluestone pavement from Bowen Lane to Albert Road is commencing today (Wednesday 14 Feb)
- The pedestrian detour will be in place until late March
- Once complete, works will commence on the connection of Albert Road South through to St Kilda Road

WORKS UPDATE

ST KILDA ROAD REINSTATEMENT



- Overnight works commenced last week to asphalt St Kilda Road throughout the project area
- Last week works were complete in the bike lane and outer lane between the Toorak Road tram stop and Bowen Lane
- Works will commence tonight on the section between Bowen Lane and Albert Road
- At the completion of these works, St Kilda Road will return to two lanes in each direction

A photograph showing a modern tram with a white and green livery on a city street. The tram has the number '123' and 'PT' on its front. It is positioned on a track with overhead power lines. The street is lined with young trees and modern buildings in the background.

Completed median and asphaltting works



ENVIRONMENT UPDATE

NOISE MONITORING

St Kilda Road Resurfacing

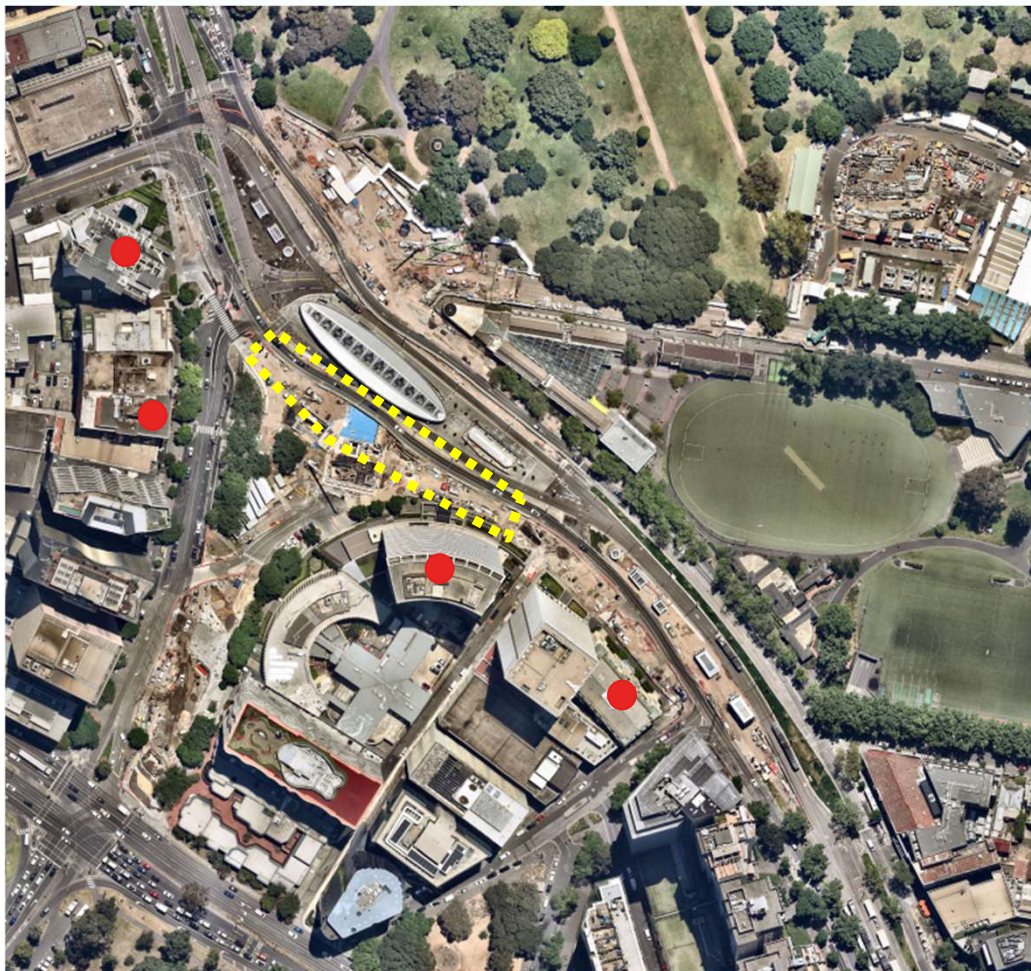


St Kilda Road Resurfacing 1hr LAeq (10pm – 7am)		
<u>Receiver</u>	Modelled	Monitored results
Domain	65-70dB	61-71dB
Botanica	70-75dB	63-72dB

Nightworks occurred week of 5/2/2024

NOISE MONITORING

St Kilda Road Resurfacing

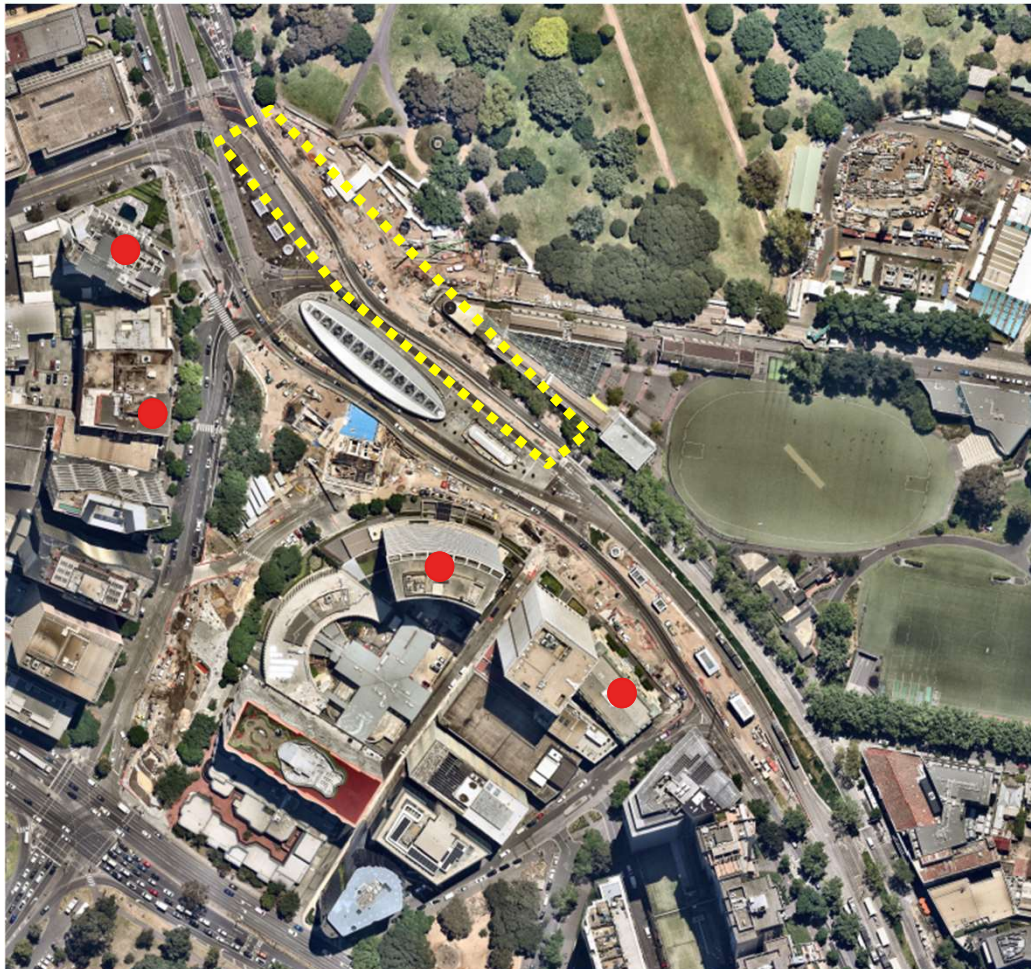


St Kilda Road Resurfacing 1hr LAeq (10pm – 7am)	
<u>Receiver</u>	Modelled
Hallmark	60-65dB
Domain Hill	65-70dB
Domain	70-75dB
Botanica	60-65dB

Nightworks planned for tonight onwards

NOISE MONITORING

St Kilda Road Resurfacing



St Kilda Road Resurfacing 1hr LAeq (10pm – 7am)

<u>Receiver</u>	Modelled
Hallmark	60-65dB
Domain Hill	60-65dB
Domain	60-65dB
Botanica	50-55dB

Nightworks planned for March 2024



TUNNELS AND STATIONS PROJECT WIDE UPDATE



ARDEN STATION