

Coburns, Exford, Ferris and Hopkins roads,  
Melton and Truganina

# Community consultation report

March 2024







Level crossing at Ferris Road



# Contents

<b>Project overview</b>	<b>4</b>
Project benefits	4
Why these level crossings need to go	4
<b>Consultation summary</b>	<b>5</b>
<b>Vision and Values</b>	<b>6</b>
<b>What we heard</b>	<b>6</b>
About you	6
Moving around the area	7
<b>What's important to you</b>	<b>9</b>
<b>Priorities for the new station precinct</b>	<b>10</b>
<b>Thank you and next steps</b>	<b>11</b>
Project timeline	11
Keeping in touch	11



# Project overview

**We're removing four dangerous and congested level crossings at Coburns, Exford and Ferris roads in Melton, and Hopkins Road in Truganina, to make Melton boom gate free.**

Removing these level crossings will make communities safer, more connected and reduce congestion in Melbourne's west.

We're building a brand new Melton Station for one of the fastest growing communities in Australia. With modern and improved facilities, we'll create a safer station precinct for passengers.

With these level crossings gone, journeys will be faster and more reliable for Melton and Truganina communities, along with creating a better transport network for all Victorians.

Removing these level crossings and building a new Melton Station will pave the way for future improvements to the line and increased train capacity along the rail corridor.

We're removing the level crossings at Coburns and Exford roads by building rail bridges over the roads which will improve traffic flow and create more reliable journeys.

By building road bridges at Ferris Road, Melton and Hopkins Road, Truganina it will improve connections and mean less disruption for drivers and passengers during construction.

**Construction starts later this year with all four boom gates gone and the new Melton Station open in 2026, two years ahead of schedule.**

## Project benefits



Melton will be crossing free in 2026



Eases congestion and unclogs local roads



New Melton Station with improved facilities for passengers



Paves the way for future improvements to the line and increased train capacity

## Why these level crossings need to go



Approximately 73,000 vehicles travel through these crossings each day



Boom gates are down for up to 28 minutes during the morning peak (7am to 9am)



Up to 16 trains travel through these crossings during the morning peak (7am to 9am)

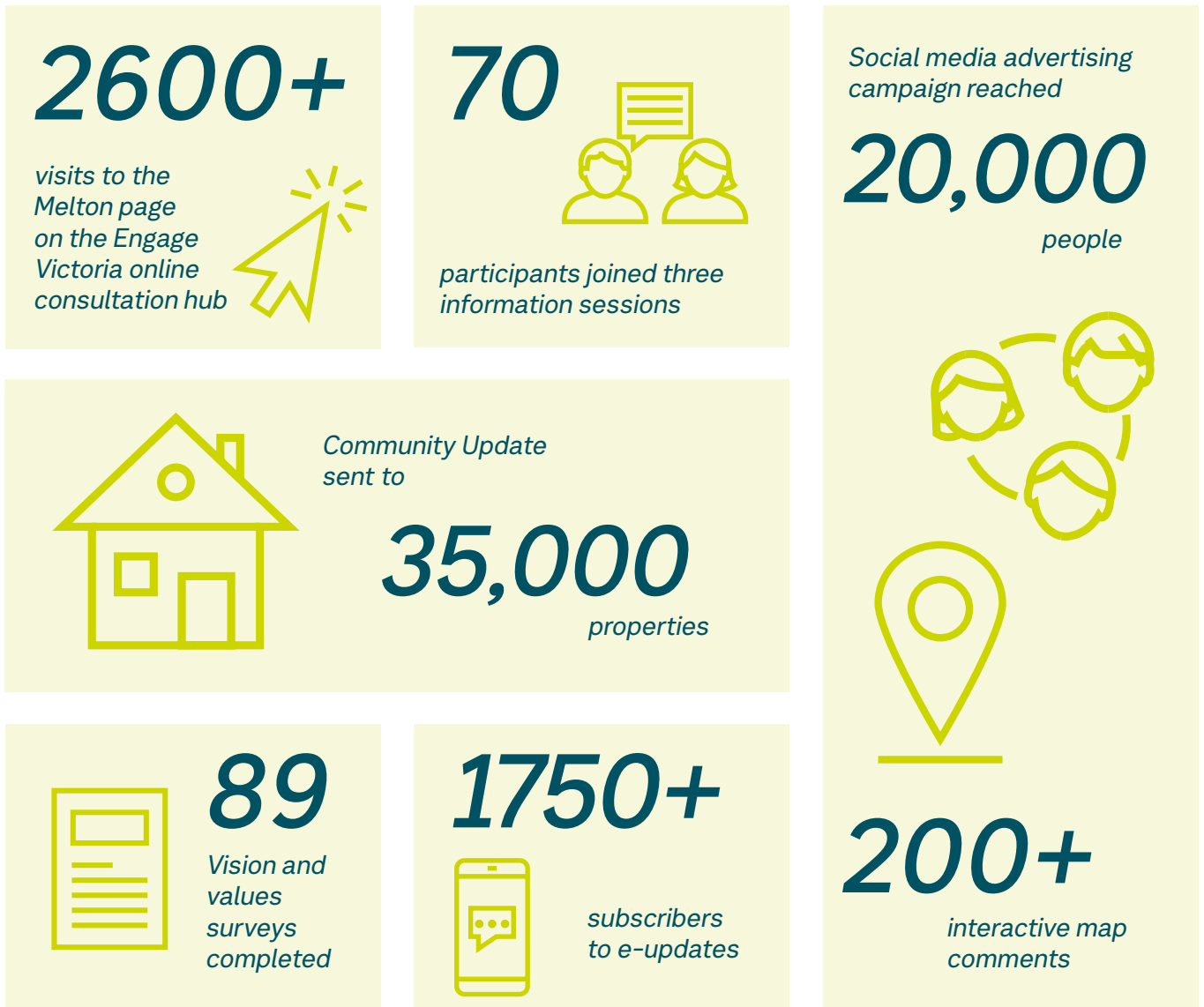


# Consultation summary

In late 2023 we asked the Melton and Truganina communities to share what they value about the local area and what they want to see delivered as part of the project.

The consultation was open for four weeks from 23 November to 22 December 2023.

We received over 300 pieces of feedback on the Engage Victoria online consultation hub and via our information sessions.



# Vision and Values

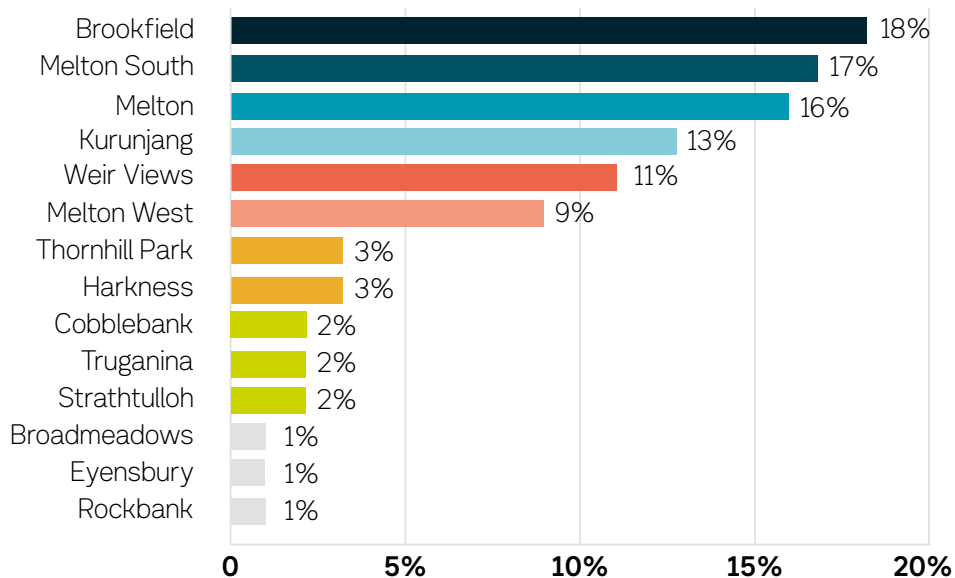
We invited the Melton and Truganina communities to complete our Vision and Values survey. The purpose of this survey was to understand what the local communities value about their area, and seek ideas on the new Melton Station precinct.

## What we heard

### About you

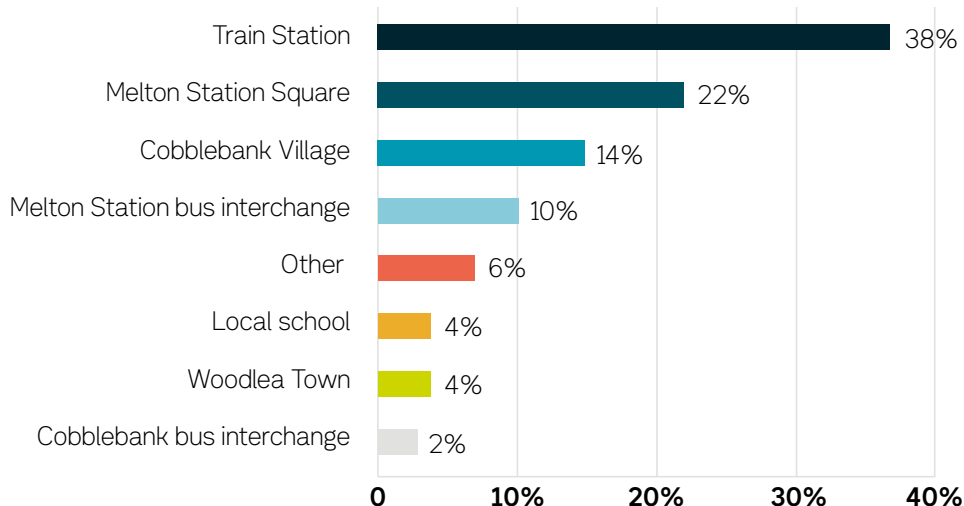
#### Which suburb do you live in?

The majority of respondents live in Brookfield, followed by Melton South and Melton.



#### What is your main destination?

Major destinations for the local communities are Melton Station, followed by Melton Station Square and Cobblebank Village.



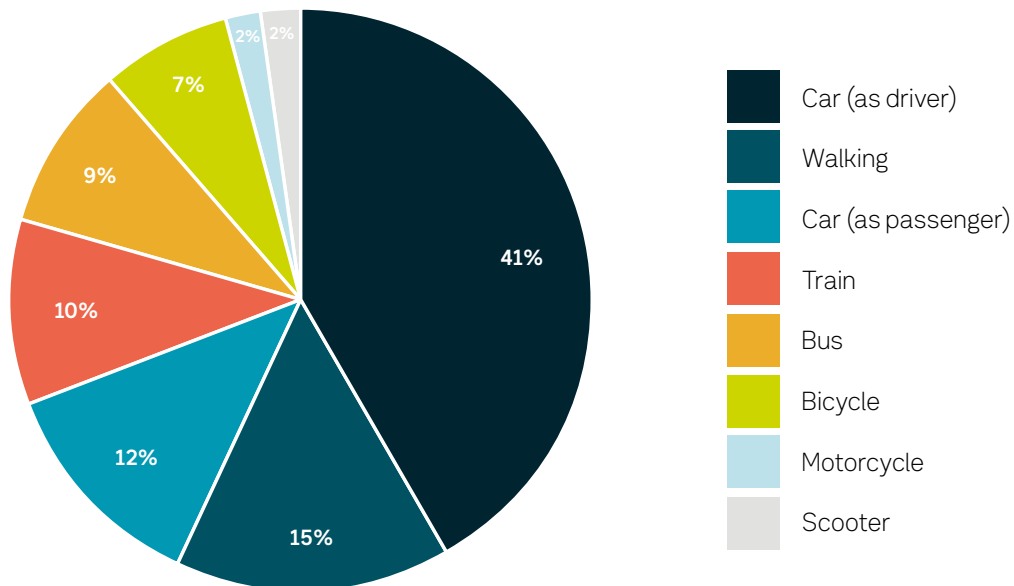


Level crossing at Ferris Road

## Moving around the area

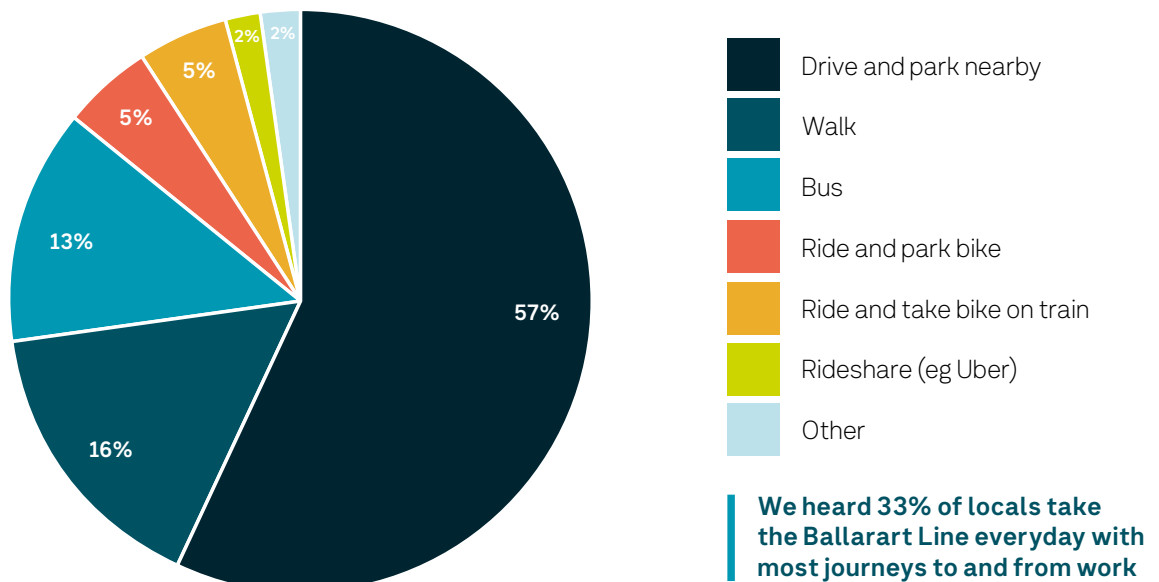
### How do you travel around the area?

We heard that when travelling around the area the majority of respondents drive a car, while fewer people walk, or travel as a passenger in a car.



### Do you use Melton Station and how do you get there?

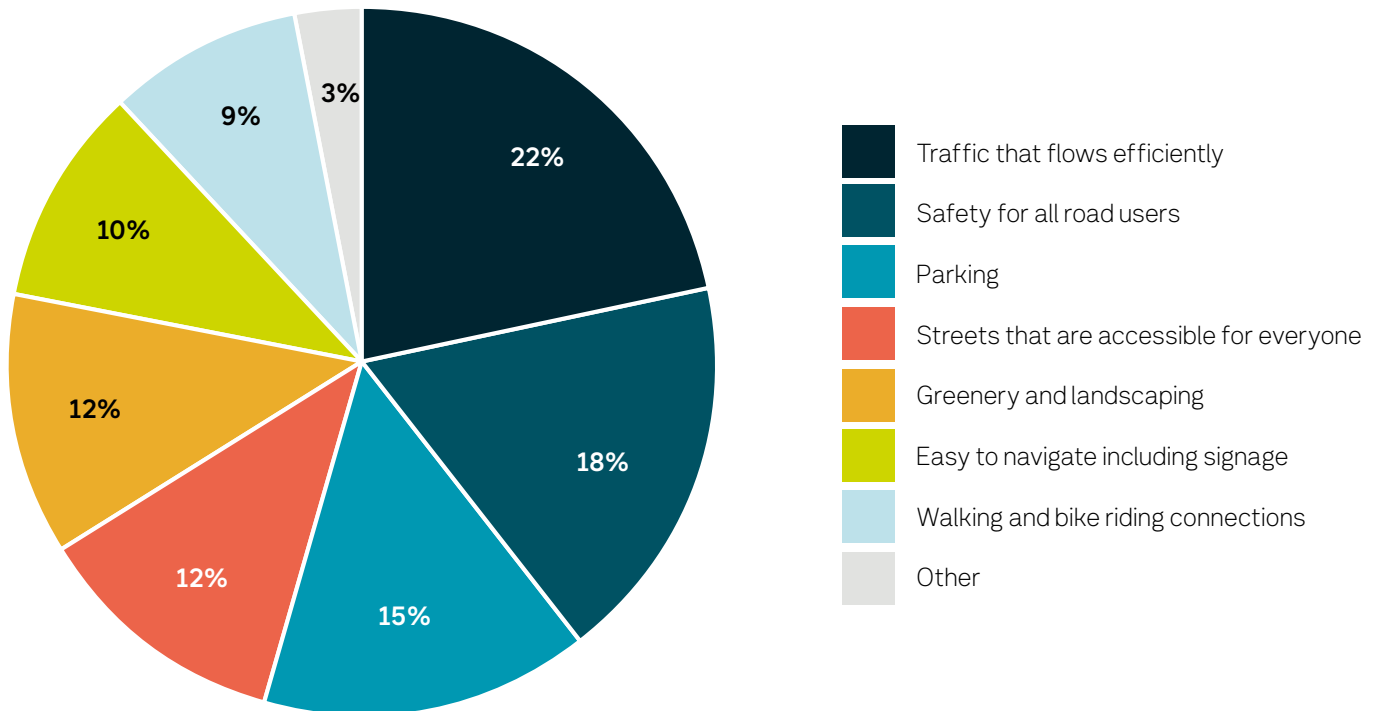
We heard that 80% of respondents use Melton Station with the majority of people driving to the station, while fewer people walk or catch the bus.





## When moving around Melton and Truganina what is important to you?

We heard the most important aspects to consider when moving around Melton and Truganina are efficient traffic flow, safety for all road users, and parking.



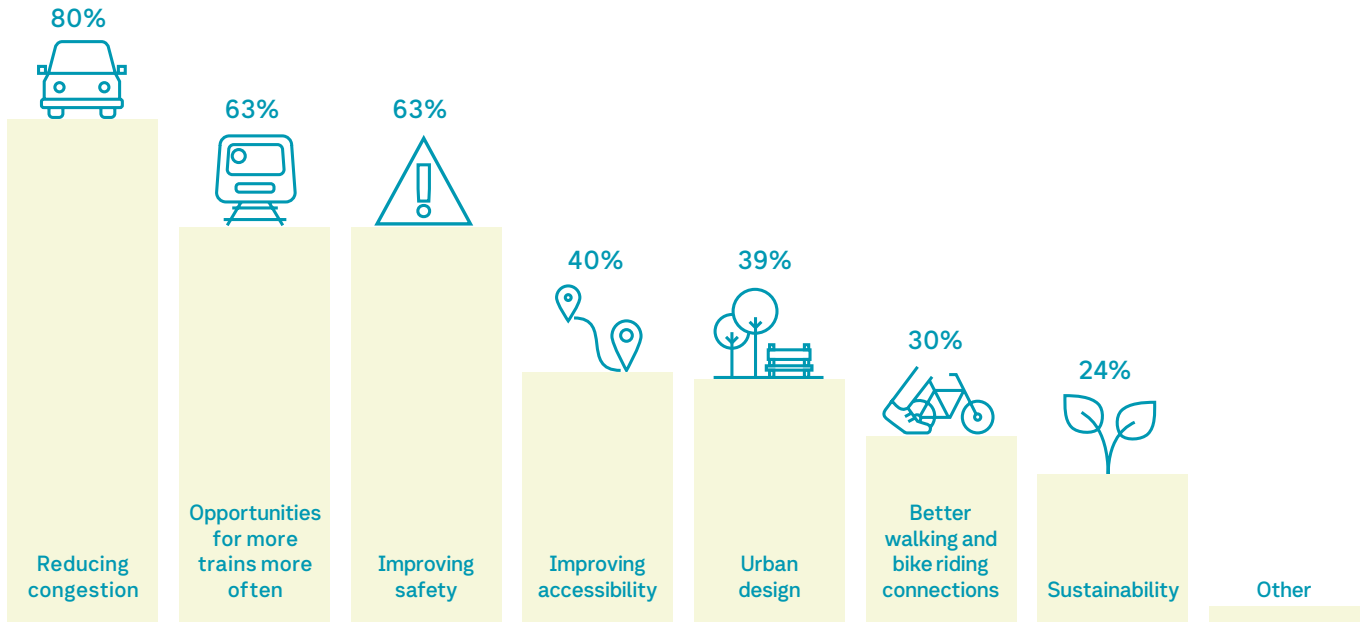
Level crossing at Hopkins Road





# What's important to you

From our conversations, information sessions and surveys, we heard the communities top three priorities for the project are reducing congestion, creating opportunities for more trains to run more often and improving safety.



## Reducing congestion



**You would like to see improved traffic flow and access around the Melton and Truganina areas, including safe and efficient access to Melton Station, surrounding shops, local schools, and the broader road network.**

We heard the build up of traffic due to boom gate down time causes delays across the road network, increasing travel times.

## Opportunities for more trains, more often



**We heard that you want to be able to access more trains, more frequently.**

You identified that removing the level crossings and building a new Melton Station will pave the way for future improvements to the line and increased train capacity.

Passengers will be more comfortable with the Melton Line Upgrade allowing bigger, nine car VLocity trains to run from 2028.

Running longer trains to and from Melton will increase passenger capacity by 50% reducing crowding on busy services.

## Improving safety



**You would like to see a design that promotes and improves safety in the areas, with mentions of passive surveillance, activated spaces and pedestrian safety.**

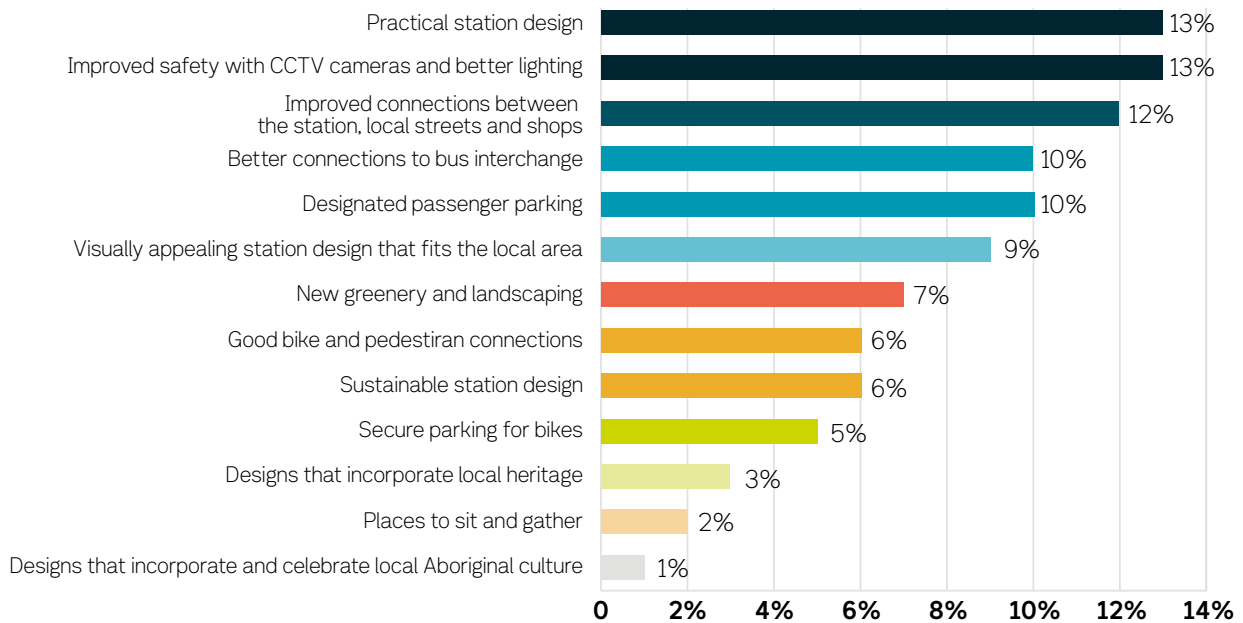
You identified the need for more lighting, better visibility, and CCTV cameras around Melton Station to make it safer for residents and passengers.

Traffic conditions presented safety concerns for people when moving through the level crossings in Melton and Truganina.

Respondents mentioned the close proximity of Coburns and Exford roads to local schools and shopping areas, commenting on the need for safe crossings available to pedestrians and bike riders.

# Priorities for the new station precinct

We asked what you'd like to see in and around the new Melton Station precinct.



## Practical station designs



*'Melton is a rapidly growing area, and the new station design needs to reflect this, with future proofing and a better bus interchange'*  
- Survey respondent

*'While waiting for the train or bus we need more comfortable seating, and rest rooms, better weather protection and undercover areas'*  
- Survey respondent

## Improved connections



*'We need a major bus interchange at the station for better transport coverage around Melton South, this will reduce congestion around the station area for parking spots'*  
- Survey respondent

*'One suggestion is for the station to feature a better connection between the platforms'*  
- Survey respondent

## Improved safety



*'Safety is vital at the new station, there is a need for increased lighting. This would help passengers feel safer at the station.'*  
- Survey respondent

*'There needs to be adequate CCTV cameras to encourage a safe environment at the new station and surrounds'*  
- Survey respondent



# Thank you and next steps

Thank you to everyone who took the time to share your ideas and thoughts about the new Melton Station and level crossing removals in Melton and Truganina.

This big construction project gives us the opportunity to revitalise local community areas, improve the Melton Station precinct and increase connectivity across Melton and Truganina.

We've used your feedback, alongside the technical requirements, to shape early concept designs for this project.

Over the coming months, locals will have the opportunity to help refine designs for the new Melton Station and level crossing removals at Coburns and Exford roads followed by designs for Ferris Road in Melton and Hopkins Road in Truganina.

Early works will start later this year with the new Melton Station open and all four level crossings gone in 2026.

## Keeping in touch

To sign up to email updates visit [levelcrossings.vic.gov.au/subscribe](https://levelcrossings.vic.gov.au/subscribe) and under *Geelong – Ballarat – Melton Line*, select the level crossings that apply to you.

For more information visit [levelcrossings.vic.gov.au/melton](https://levelcrossings.vic.gov.au/melton)

Call **1800 105 105** anytime or email [contact@levelcrossings.vic.gov.au](mailto:contact@levelcrossings.vic.gov.au)

Send us a private message on our Level Crossing Removal Project Facebook page.

To sign up for SMS updates text **MELTON** to **0428 581 917**

## Project timeline



**2023**

Project fast tracked  
Level crossing removal solutions confirmed  
Community consultation



**2024**

Designs released  
More community consultation  
Final designs released  
Construction begins



**2025**

Construction



**2026**

New Melton Station open  
All four sets of boom gates gone

\* Timeline subject to change.








Level crossing at Hopkins Road

**levelcrossings.vic.gov.au**

contact@levelcrossings.vic.gov.au



For languages other than English, please call 9209 0147.

1800 105 105 (call anytime)     

Please contact us if you would like this information in an accessible format. If you need assistance due to a hearing or speech impairment, visit [relayservice.gov.au](http://relayservice.gov.au)

