



Works Notification

Works happening in your area

Monash | April 2024

Works are underway in Monash to deliver Suburban Rail Loop (SRL) East for Melbourne and Victoria.

We're continuing site establishment works and starting to move utilities in Monash in preparation for construction of SRL East.

These works will be carried out from mid-April for up to three months.

These works will be undertaken during both day-time and night-time working hours.

Day-time working hours

7am - 6pm, Monday to Friday

7am - 1pm, Saturday

Night-time working hours

6pm - 7am, Monday to Sunday

20-24 HOWLEYS ROAD

From mid-April for up to three months

- Earthworks to level the site and drainage installation
- Installing site compound for workers
- Continuing demolition waste removal
- Day-time work hours.

FERNTREE GULLY ROAD, BLACKBURN ROAD AND HOWLEYS ROAD

From mid-April for up to three months

- Identifying and moving underground services
- Installation of utility access points
- Removal of unused gas main
- Tree and vegetation removal
- Night-time working hours.

How we will manage our works

These works will generate some noise, dust and vibration.

We will minimise impacts to the community by:

- Using water trucks and dust suppressants where required
- Positioning light towers away from properties
- Positioning equipment as far as possible from properties and turning it off when not in use.

Impacts

As with all major infrastructure projects, surrounding communities may experience some impacts during construction. The project will work with businesses and residents to reduce impacts and provide support when needed.

Please contact us on **1800 105 105** to discuss support available if you are impacted by our works.

Local traffic changes

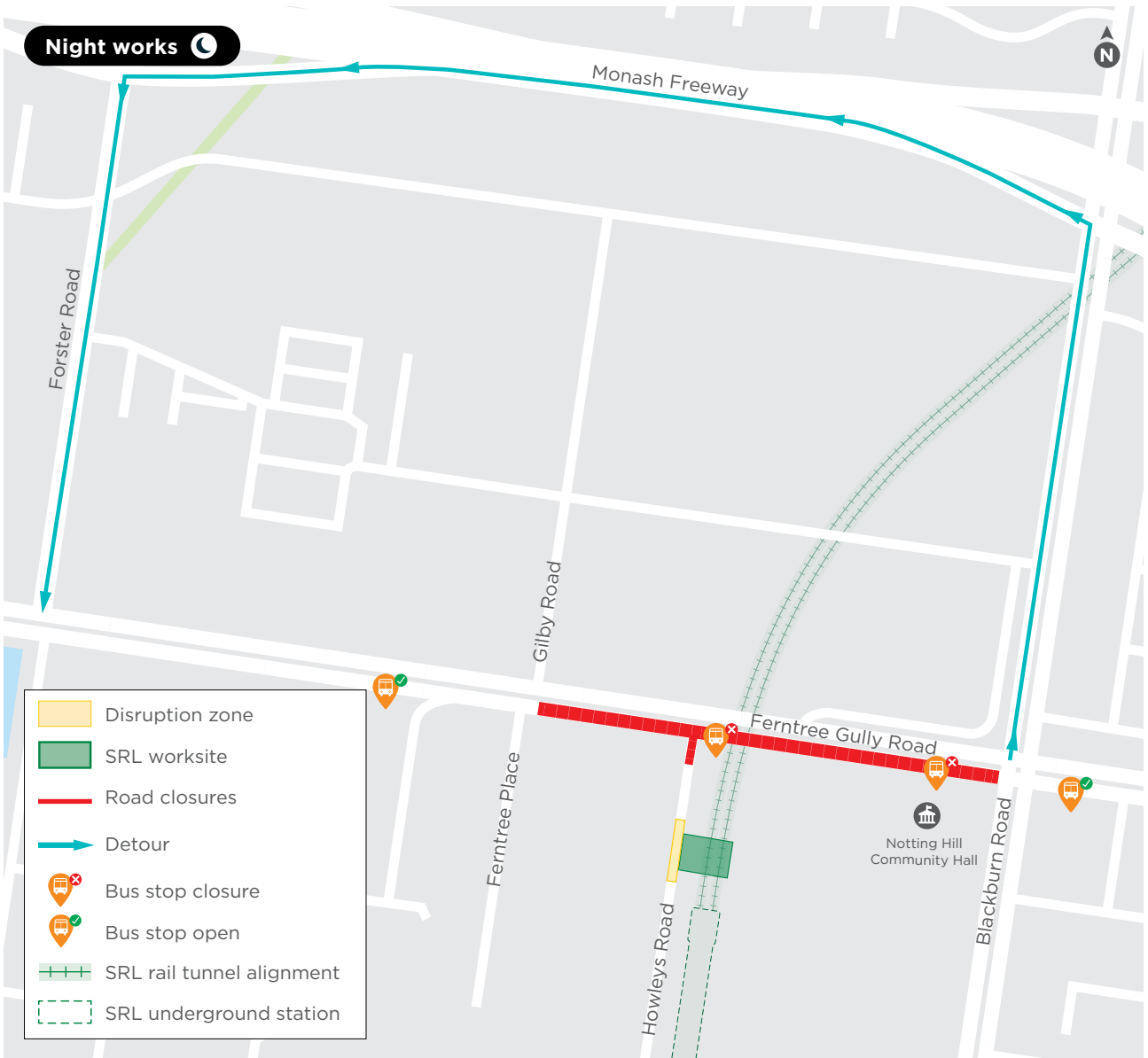
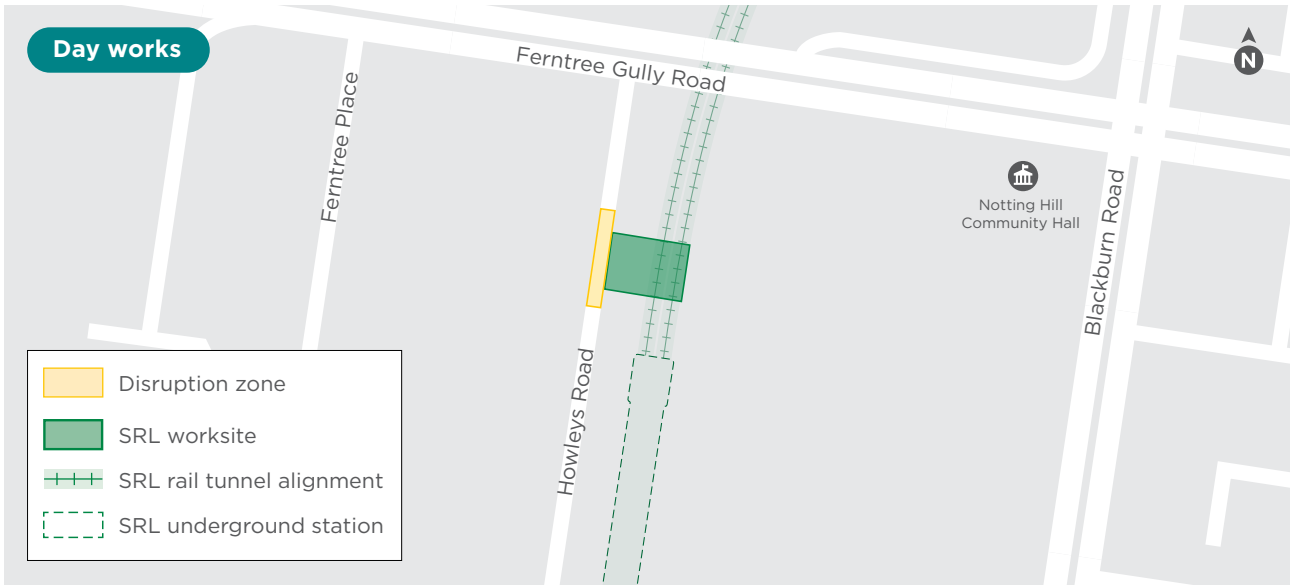
Traffic changes and pedestrian detours are needed to complete these works. Vehicle and pedestrian access to homes will be maintained at all times, with help from traffic controllers when required. Access to businesses will be maintained during business hours.

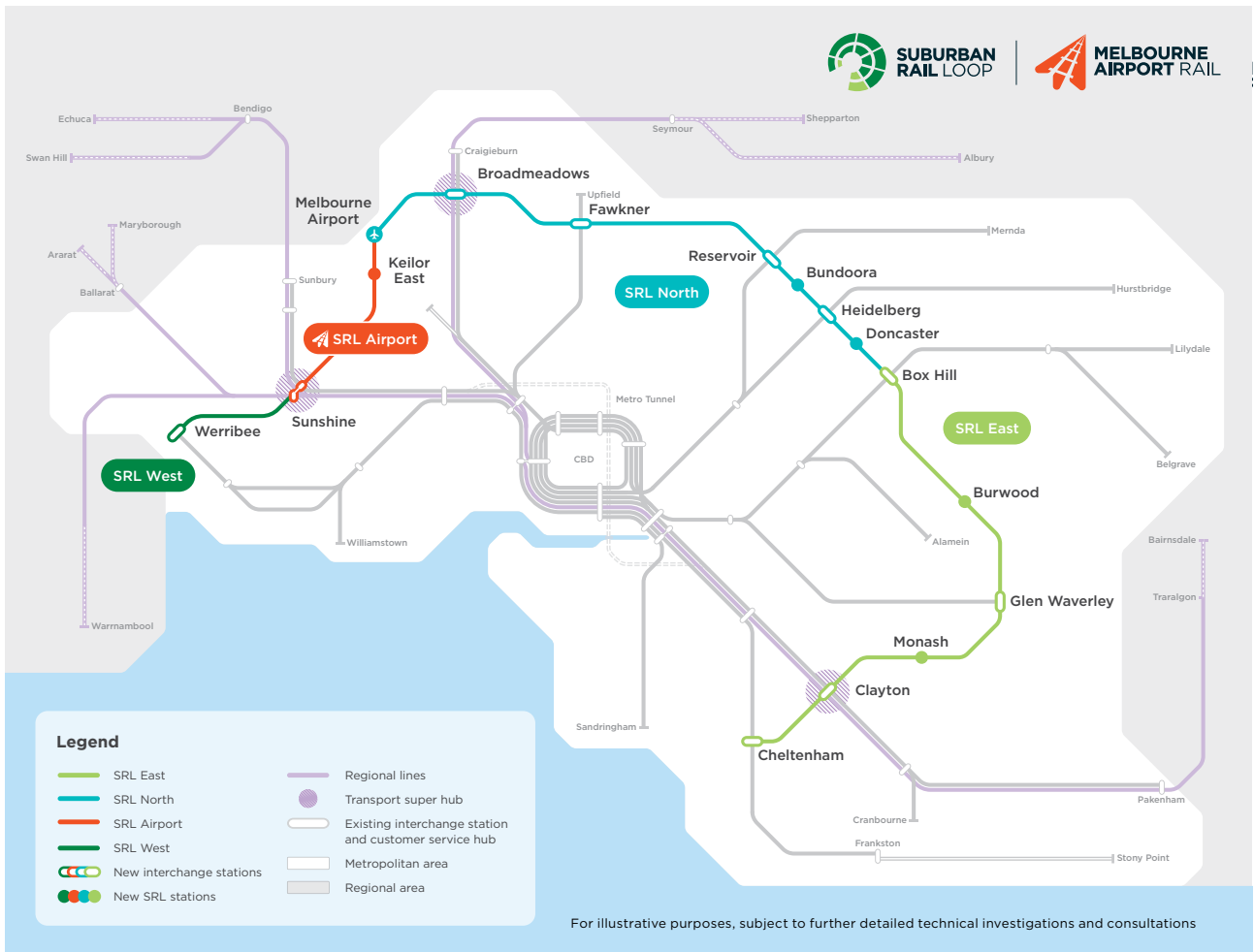
Please see the table and map below for details of travel changes in the area.

Dates	Traffic changes
From mid-April for up to three months	Howleys Road <ul style="list-style-type: none">— On-street car parking closures
Day-time working hours From mid-April for up to three months	Howleys Road <ul style="list-style-type: none">— Intermittent lane closures, traffic maintained in both directions— Footpath closure on the eastern side of Howleys Road
Night-time working hours From mid-April for up to three months	Ferntree Gully Road <ul style="list-style-type: none">— Closed westbound between Blackburn Road and Ferntree Place— No access to Howleys Road Blackburn Road <ul style="list-style-type: none">— No access to westbound Ferntree Gully Road Howleys Road <ul style="list-style-type: none">— Closed at the intersection of Ferntree Gully Road— Access maintained via Normanby Road

Public transport changes

Night-time working hours Route 693 - towards Oakleigh From mid-April for up to three months	Bus stops closures <ul style="list-style-type: none">— Ferntree Gully Road at the corner of Howleys Road— Ferntree Gully Road outside Notting Hill Community Hall Nearest available bus stops are Ferntree Gully Road/Blackburn Road and Ferntree Gully Road/Ferntree Place. Buses will detour via Lionel Road and Gilby Road.
---	--





Thank you for your patience and cooperation as we progress the delivery of SRL East and a new underground station at Monash



To receive SRL East works reminders via **SMS** simply text **MONASH** to **0429 469 592**

More information

To find out more about Suburban Rail Loop:

- 🏠 suburbanrailloop.vic.gov.au
- ✉ contact@srla.vic.gov.au
- 📞 1800 105 105 (24 hours a day, 7 days a week)

Suburban Rail Loop Authority
PO Box 24214, Melbourne VIC 3001

Interpreter Service (03) 9209 0147

It should be noted that this information is current at the time of printing, however changes may occur. Please visit suburbanrailloop.vic.gov.au for the latest updates.