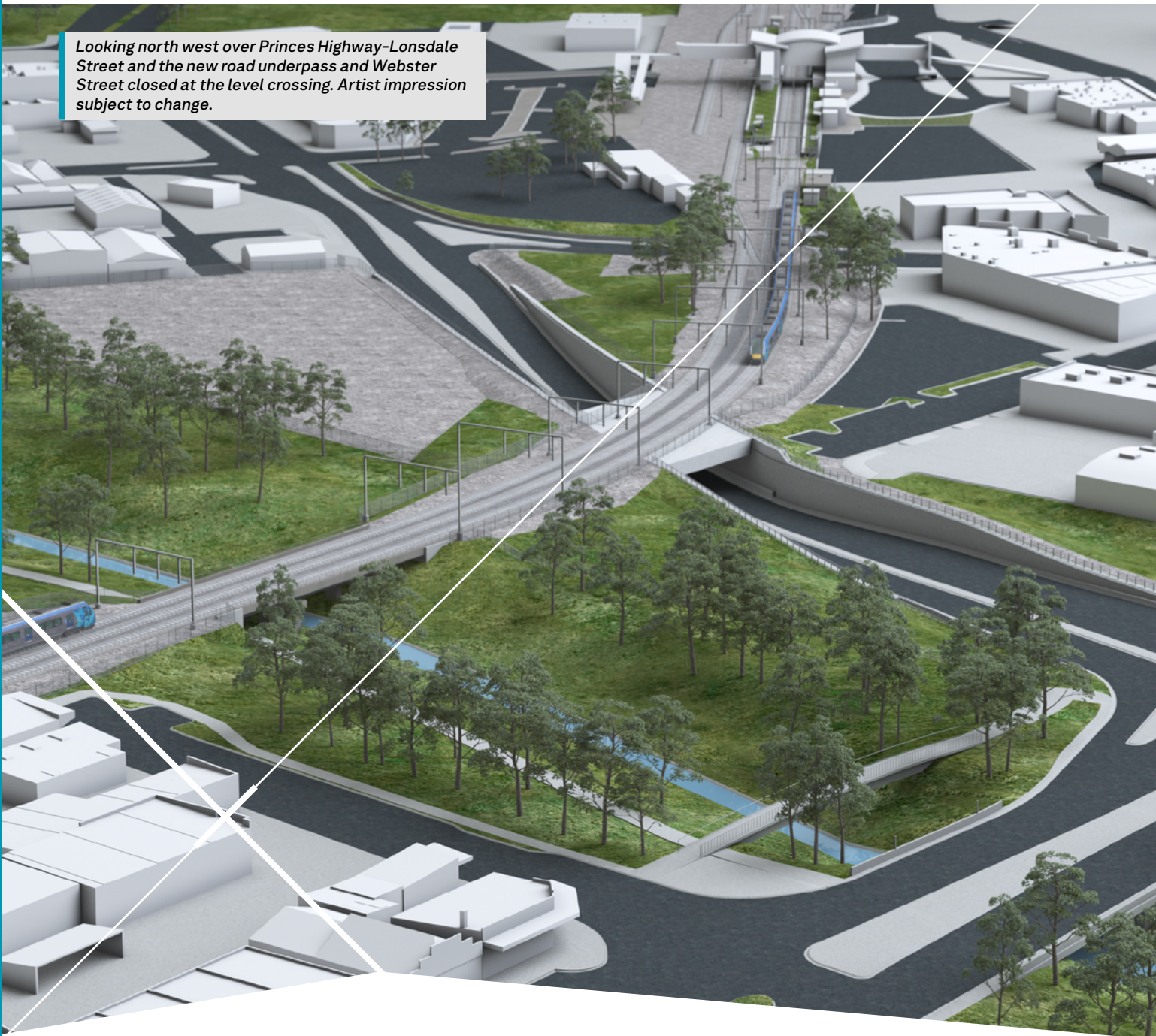


Webster Street, Dandenong

Community consultation report

August 2024

Looking north west over Princes Highway-Lonsdale Street and the new road underpass and Webster Street closed at the level crossing. Artist impression subject to change.





RAIL CROSSING
CROSSWAY



STOP
ON RED
SIGNAL



The boom gates down on Webster Street.



Contents

Project overview	4
Consultation summary	5
What we heard	6
About you	6
Moving around the area	8
What's important to you	10
Look and feel	12
Thank you and next steps	13

Project overview

We're removing the dangerous and congested level crossing at Webster Street, Dandenong.

We're removing the level crossing by closing Webster Street to vehicles at the level crossing and building a new road under the rail line, connecting Princes Highway-Lonsdale Street to Cheltenham and Hammond roads.

Removing this level crossing will improve safety for drivers, pedestrians and bike riders, and support future development in the area.

It will also reduce congestion and deliver a more reliable road network with better connections and travel times.

We will close Webster Street at the level crossing in 2025 and the new road underpass will open in 2028.

Why these level crossings need to go



Up to **10,000 vehicles** travel through this level crossing each weekday



Boom gates are down for up to **62 minutes** during the morning peak (7am to 9am)



22 near misses since 2012

Project benefits



A safer and quieter Webster Street

With the level crossing closed, Webster Street will be quieter.



Keeping trucks and freight moving

When the new underpass opens, heavy vehicles will move away from Dandenong CBD and less cars will travel on Webster Street.



Improved cycling and pedestrian connections

Pedestrians on Webster Street will be able to cross the rail line.



Less disruption during construction

This design reduces the impact on the busy Cranbourne and Pakenham lines during construction.



Designed for Dandenong's future

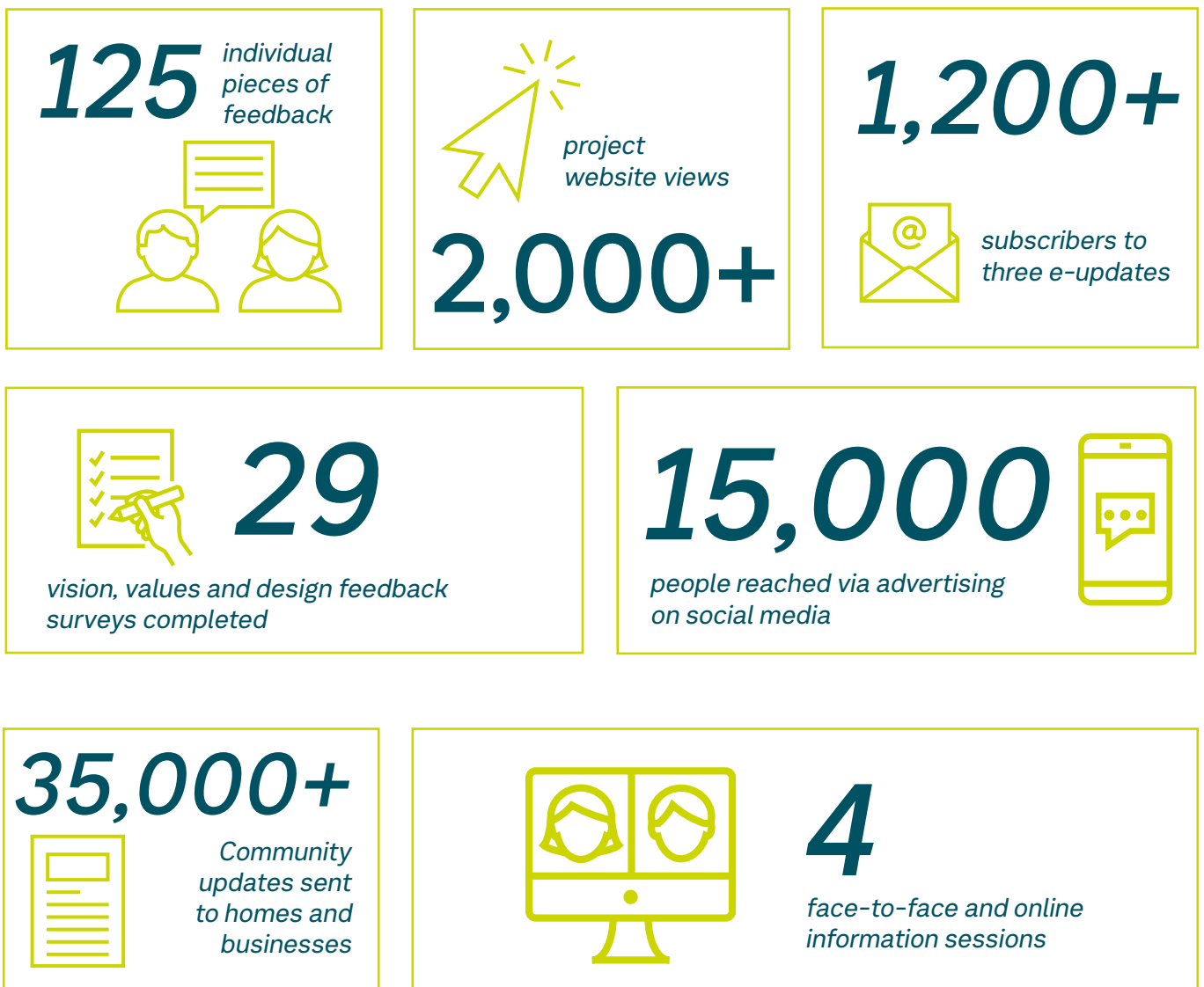
This design supports future development and integrates with the Revitalising Central Dandenong Masterplan.

Consultation summary

In late 2023, we asked you how you move around the local area, what you value about Dandenong and for feedback about the concept designs.

We published project information and the vision, values and design feedback survey in English, Mandarin, Tamil, Vietnamese, Serbian, Arabic and Albanian.

Consultation was open from 13 November until 10 December 2023. We received 125 pieces of feedback on the Engage Victoria online consultation hub and via our information sessions.



Vision and Values

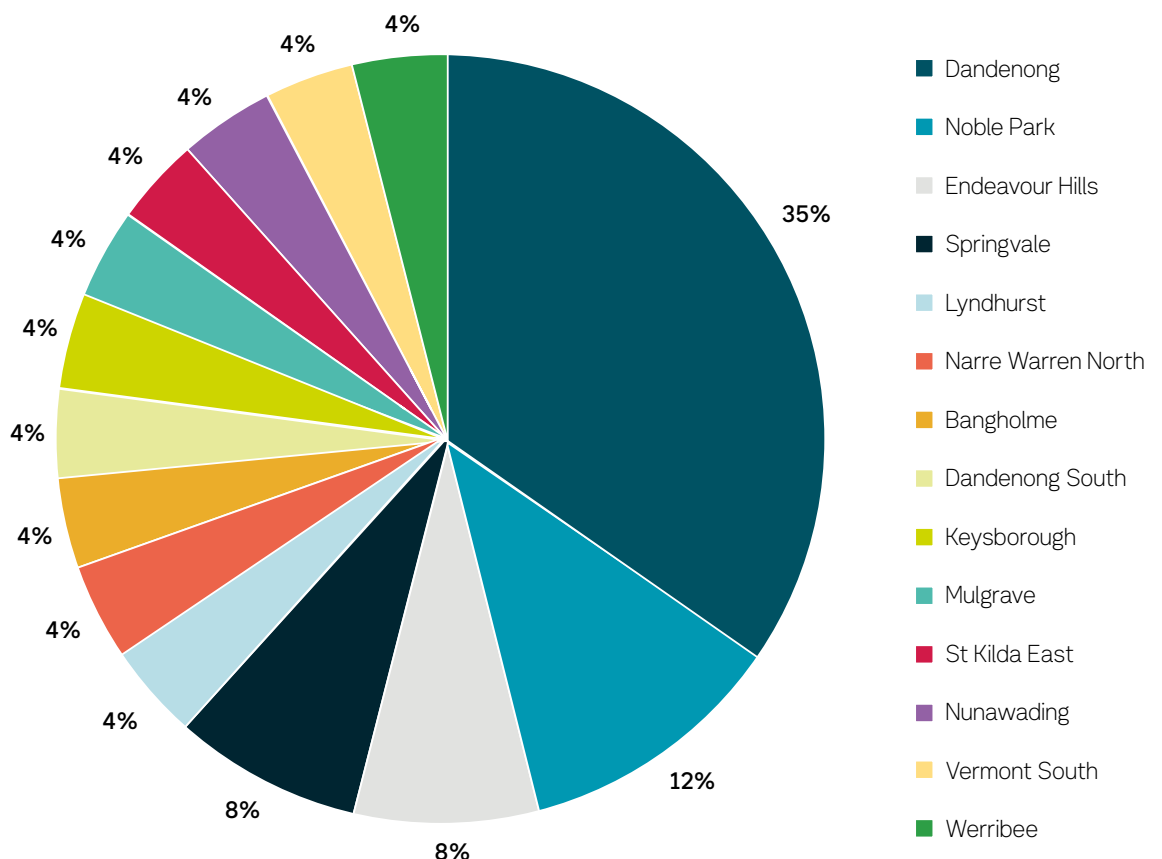
We invited the Dandenong community to complete our vision, values and design feedback survey. The purpose of this survey was to understand how the local community move around area and what they value about their area, and seek ideas for the Webster Street level crossing removal.

What we heard

About you

Which suburb do you live in?

The majority of people who responded live in Dandenong.



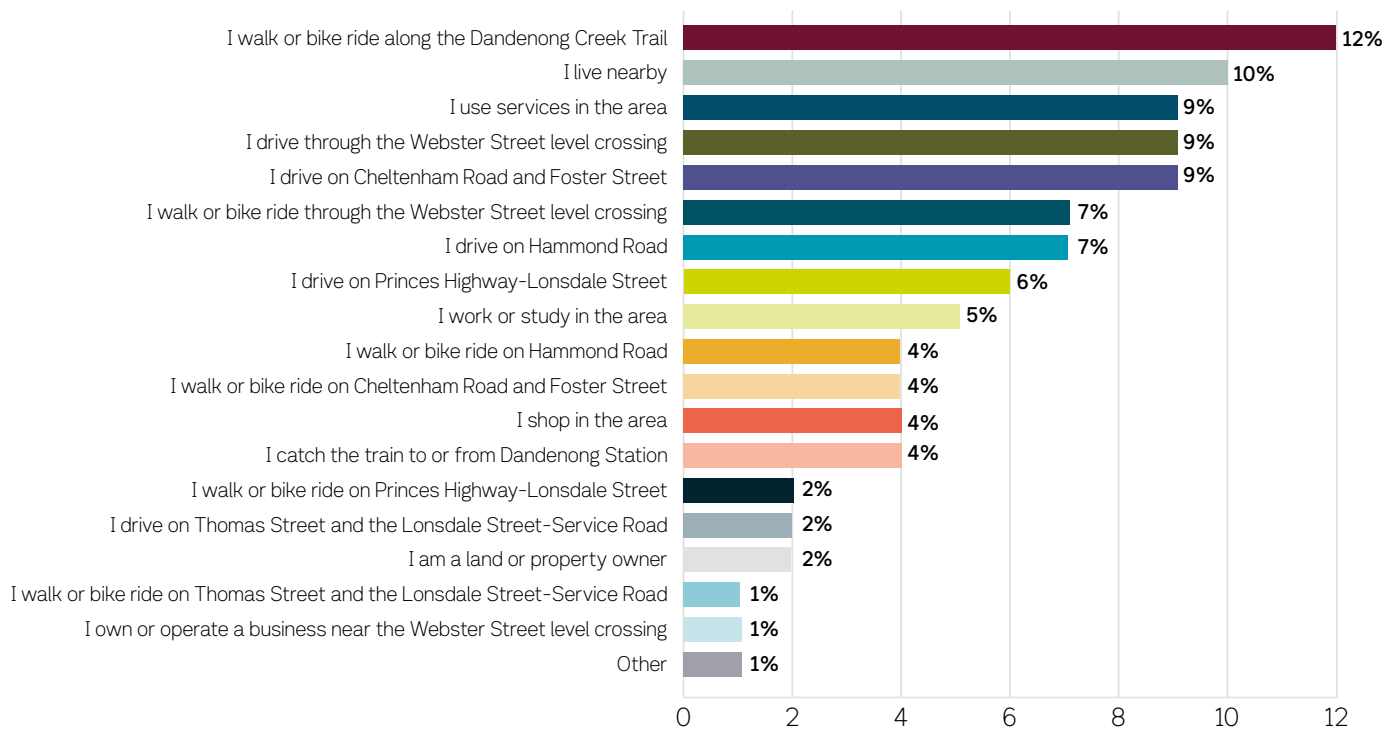
65% of respondents live in the Greater Dandenong area.

The boom gates down on Webster Street.



What is your main interest in the project?

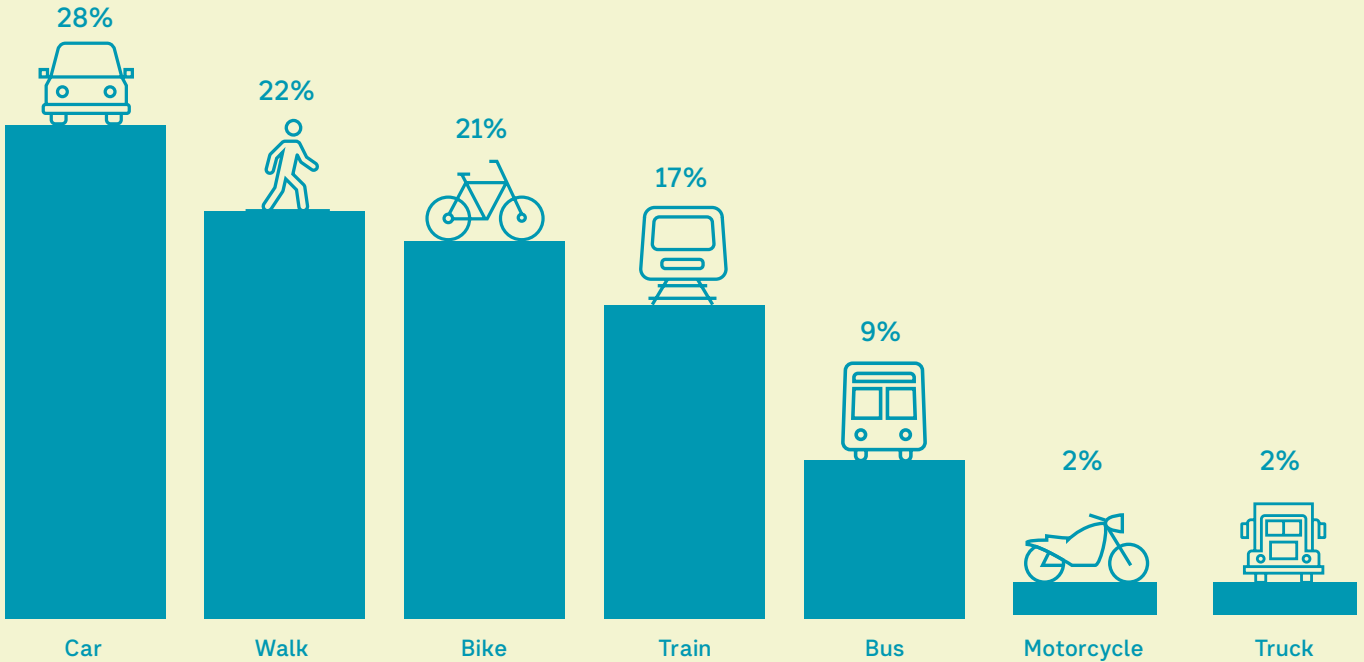
We heard that most people were interested because they use the Dandenong Creek Trail and live nearby.



Moving around the area

How do you travel around the area?

We heard that when travelling around the area the majority of respondents drive a car, while fewer people walk or ride a bike.



What challenges do you face travelling on Princes Highway-Lonsdale Street and Cheltenham and Hammond roads?

Most respondents told us congestion and traffic flow were the greatest challenges.

A number of people raised flooded roads as a challenge when moving around the area.

Drainage is an important part of our design.

The design for the new road underpass includes a drainage system that is appropriate for the area.

Some of the challenges raised include:



Traffic flow and congestion on these roads makes it challenging to travel around the area.



Current road and intersection designs can make it hard to understand and navigate around the area.



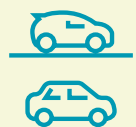
Walking and bike pathways feel unsafe and/or don't connect with other pathways in the area.

What challenges do you face when walking and cycling through the area?

We heard that the greatest opportunity is connecting pathways in the area.



Connecting with other pathways in the area



Easing congestion on the roads and at intersections

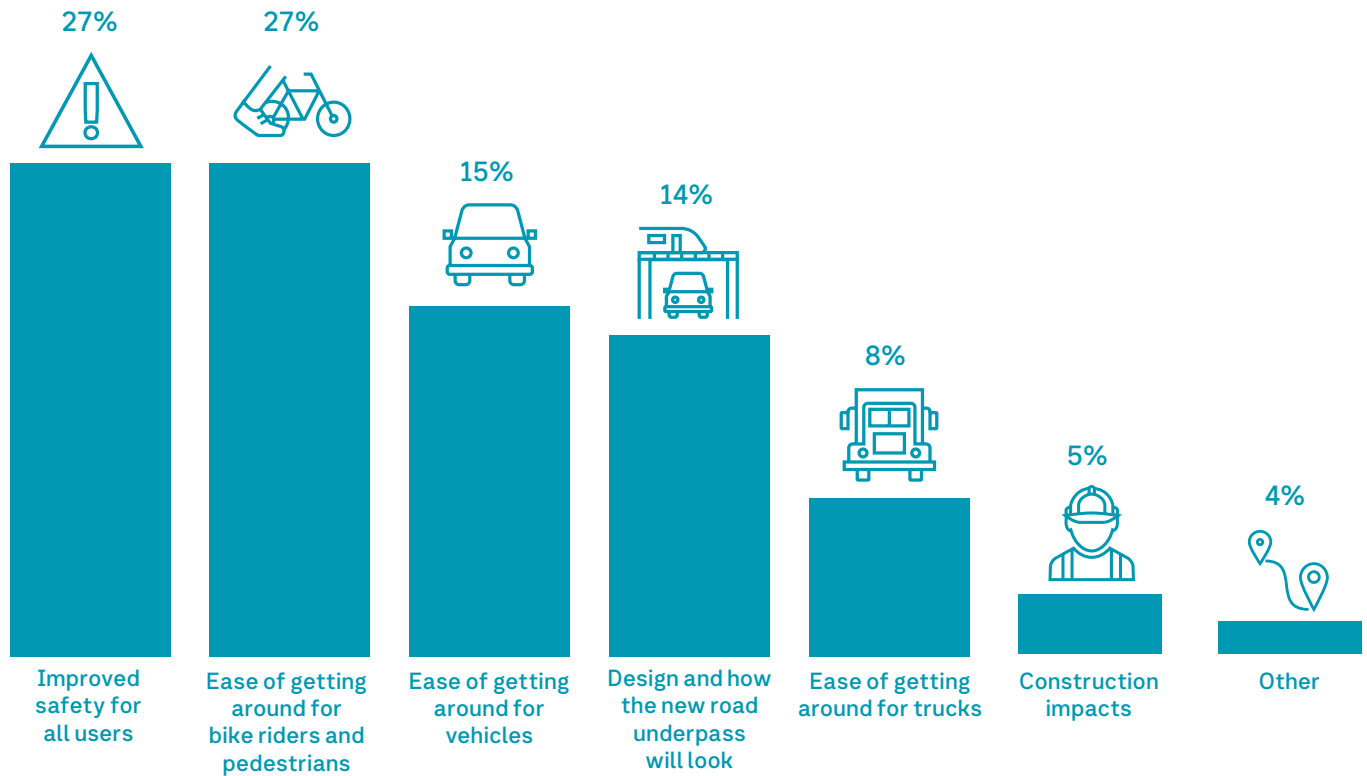


Improving safety

What's important to you

What are the top three most important things to you when removing the level crossing at Webster Street?

You ranked improved safety and ease of getting around as the most important things to you.



What do you value about your local area?

From our conversations, information sessions and survey, we heard you value:



Green spaces and trees



Walkability of the area



Access to local businesses



Multiculturalism and diversity of Dandenong



Cars waiting at the boom gates on Webster Street.

In our conversations and from the survey, you told us your priorities for the project.

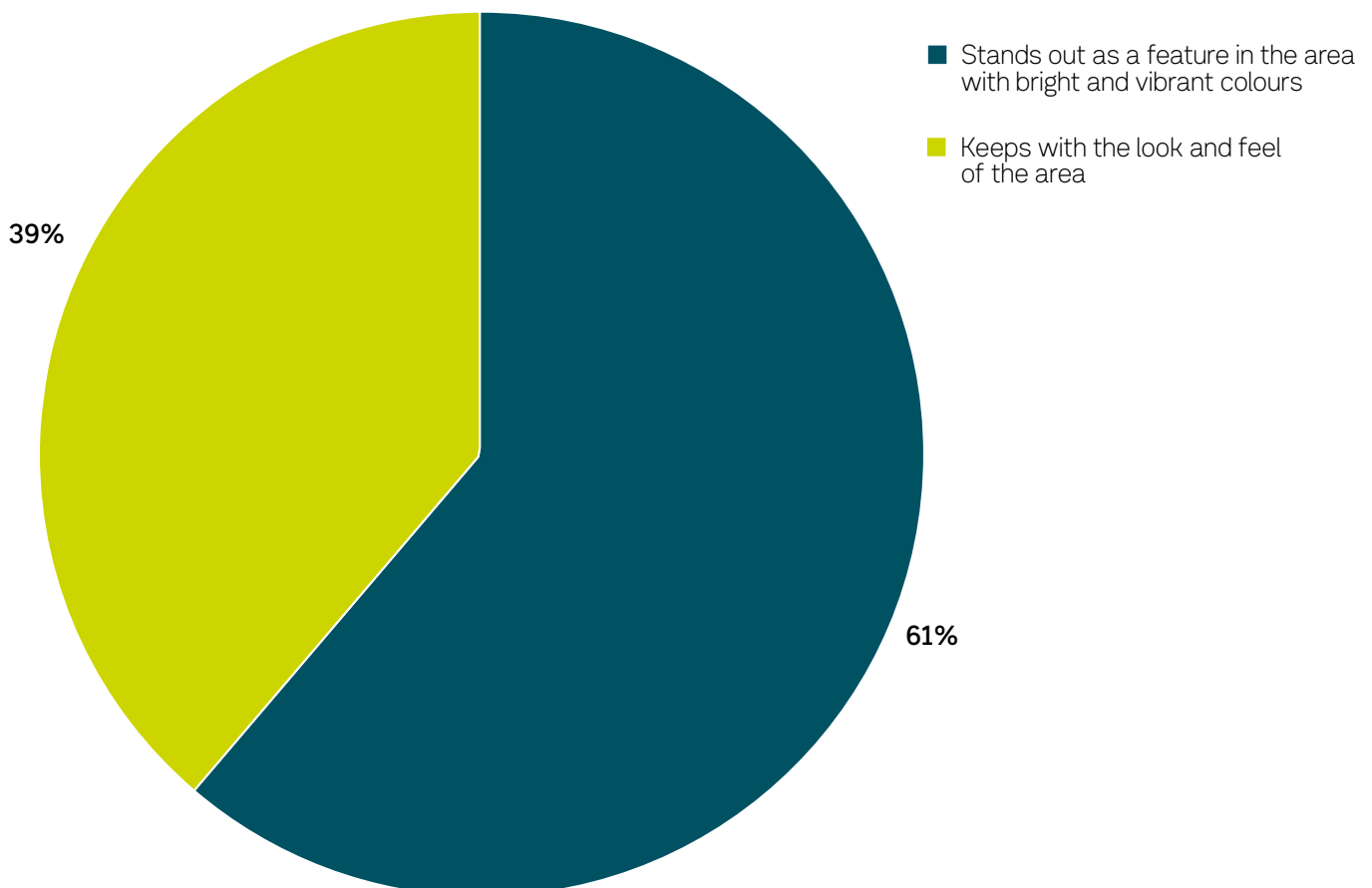
Key themes

Reduced congestion	<p>You told us that you would like the design to improve traffic conditions and make journeys through the area easier.</p> <p>Restricted turns and bank up of traffic from the level crossing onto Princes Highway-Lonsdale Street were noted as causes for congestion in the area.</p>
Trees, vegetation and green spaces	<p>Locals would like to see more trees and greenery. A preference for the planting of native and indigenous species stood out.</p> <p>Among the feedback, minimising impacts to existing trees and vegetation was important to the community.</p>
Better walking and bike connections	<p>We heard you would like to see better connections for pedestrians and bike riders through the area.</p> <p>We also heard that local access could be improved by connecting existing pathways to local shops and Dandenong Station.</p>

Look and feel

What is most important to you in terms of the design of the project?

We heard you want a design that stands out as a feature in the area with bright and vibrant colours.



How would you like the space around the Webster Street level crossing precinct to be landscaped?

Most people said they would like native or indigenous plants, followed by low and ground level planting, trees, paving, grass and non-native plants or trees.

The below are ranked in order of preference, with 1 being the most preferred.



Thank you and next steps

Thank you to everyone who took the time to share your ideas and thoughts about the Webster Street level crossing removal project.

Your feedback, alongside the technical requirements, will shape final designs for the project, which will be released later this year.

Project timeline








* Timeline subject to change.

levelcrossings.vic.gov.au

contact@levelcrossings.vic.gov.au



For languages other than English, please call 9209 0147.

1800 105 105 (call anytime)     

Please contact us if you would like this information in an accessible format. If you need assistance due to a hearing or speech impairment, visit relayservice.gov.au

