

Managing construction impacts

Fact Sheet
November 2024

BIG BUILD
M80 RING ROAD



Works are underway to complete the M80 Ring Road in Greensborough

We have a number of major construction sites as we deliver the M80 Ring Road Completion. All works are carefully planned and managed to make sure residents can continue to enjoy where they live and local businesses can continue to operate.

This fact sheet outlines what we are doing to manage construction impacts and travel disruptions as we build the M80 Ring Road Completion.

The project will pass through traffic under local roads from Greensborough to Watsonia for a seamless connection to North East Link – taking 19,000 cars and trucks off Greensborough Road each day.

If you feel you are experiencing excessive impacts from construction, we encourage you to contact the project team on 1800 105 105 as soon as possible.



8 new
underpasses, bridges
and crossings



10km
of new and upgraded
walking and cycling paths



14km
of new lanes on the
M80 Ring Road



2 new
interchanges



4000+
new trees planted

Sign up for updates
bigbuild.vic.gov.au/roads-subscribe

Environmental Performance Requirements

All works are planned and managed in line with the project's Environmental Performance Requirements (EPRs).

The EPRs identify the impacts of project construction and how they will be managed.

These were developed in consultation with stakeholders before works on the project started through the Environmental Effects Statement (EES) process.

Compliance with the EPRs is reviewed, verified and audited by an Independent Environmental Auditor.



Truck spraying water on a haul road to manage dust

How we manage impacts

Dust

We meet Victoria's stringent air quality standards, which are among the highest in the world. Air quality will be regularly monitored to ensure it complies with strict Environmental Performance Requirements (EPRs).

Controls to manage dust include:

- building hardstand areas with asphalt and concrete
- spraying water on haul roads and open areas within the worksite
- containing stockpiles with fabric and eco-friendly soil binding agents
- monitoring dust as close to the source as possible
- avoiding construction activities that generate dust in dry and windy conditions.

Noise

Strict controls have been put in place to make sure construction noise is well managed and complies with the Environment Protection Authority (EPA) Victoria guidelines.

These controls include:

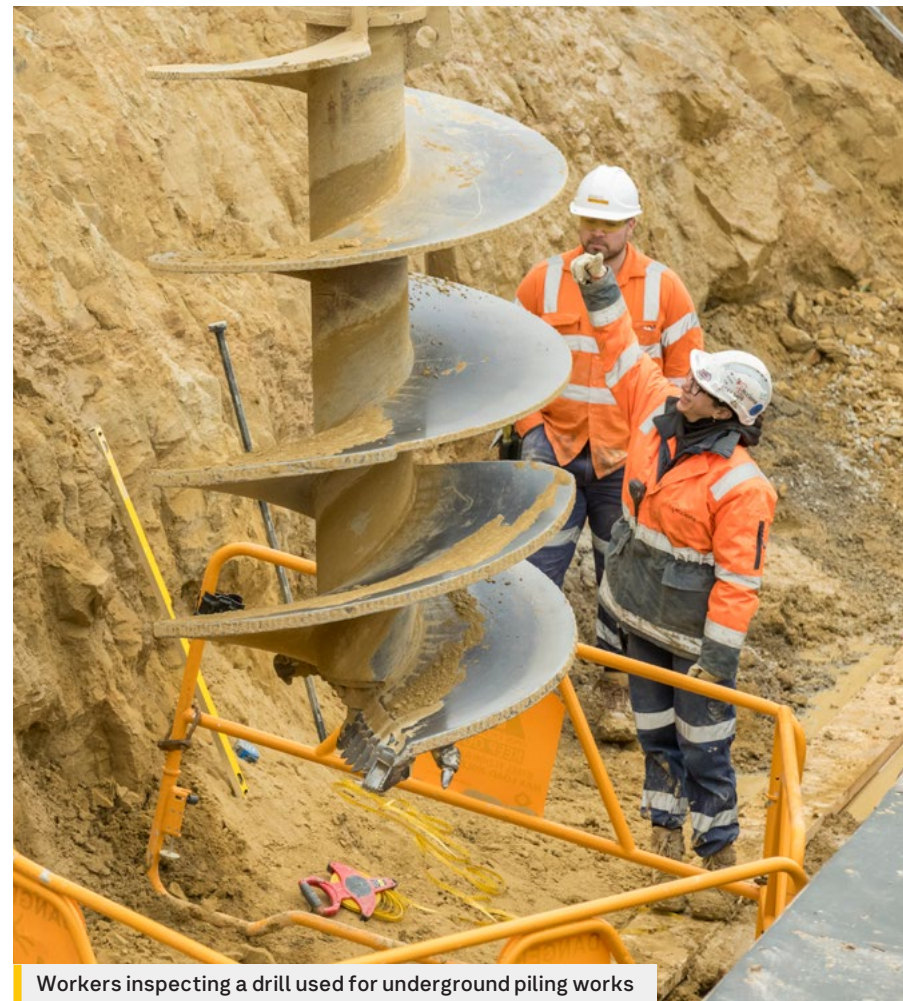
- choosing materials and equipment that reduce noise, such as using solar-powered lights instead of diesel generators
- using alternate construction methods to reduce noise impacts
- monitoring noise levels and taking action to reduce noise wherever possible

- constructing temporary noise walls in high-impact areas
- prioritising noise wall construction when planning our construction program.

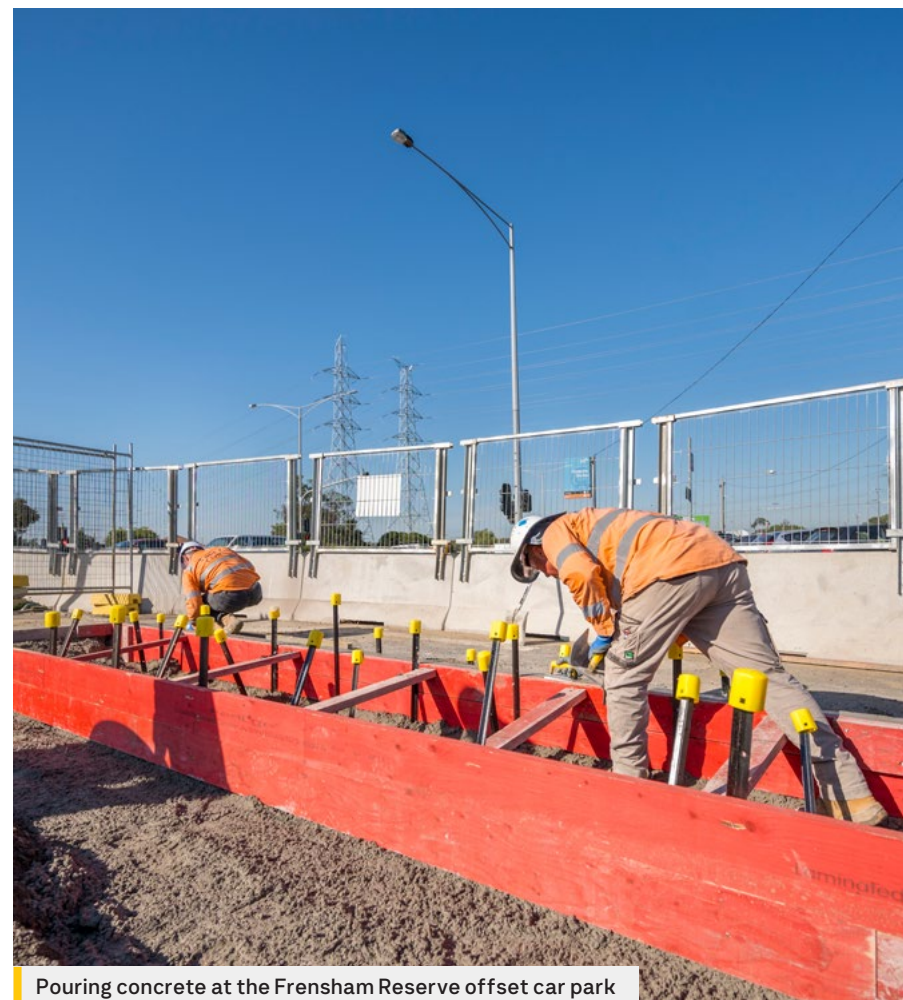
Vibration

You may notice some vibration when we're working nearby, especially when excavating, piling or laying asphalt. There are strict requirements in place to minimise disruption and avoid damage to buildings. We will:

- inspect nearby properties and buildings before and after construction
- monitor ground movement and vibration levels at all times
- inform you before starting nearby works likely to cause vibration.



Workers inspecting a drill used for underground piling works



Pouring concrete at the Frensham Reserve offset car park

Hazardous materials

Managing contaminated material is a normal part of major construction, especially when working in urban areas. We've conducted thousands of soil tests to understand ground conditions, but in the event that unexpected material is found, we have processes to manage this safely to protect the community and our workforce.

If unexpected contaminants are found, crews will set up an exclusion zone and monitor air quality to ensure there is no risk to our workers or the public. Licensed removalists will attend the site wearing personal protective equipment. They are trained to safely handle and dispose of any hazardous materials that may be present, in line with strict EPRs and EPA guidelines.

Trees and vegetation

We're working hard to retain and protect as many trees as possible.

We work with qualified ecologists and arborists to determine which trees need to be protected and which trees need to be replaced through new planting.

Where tree removal can't be avoided, we:

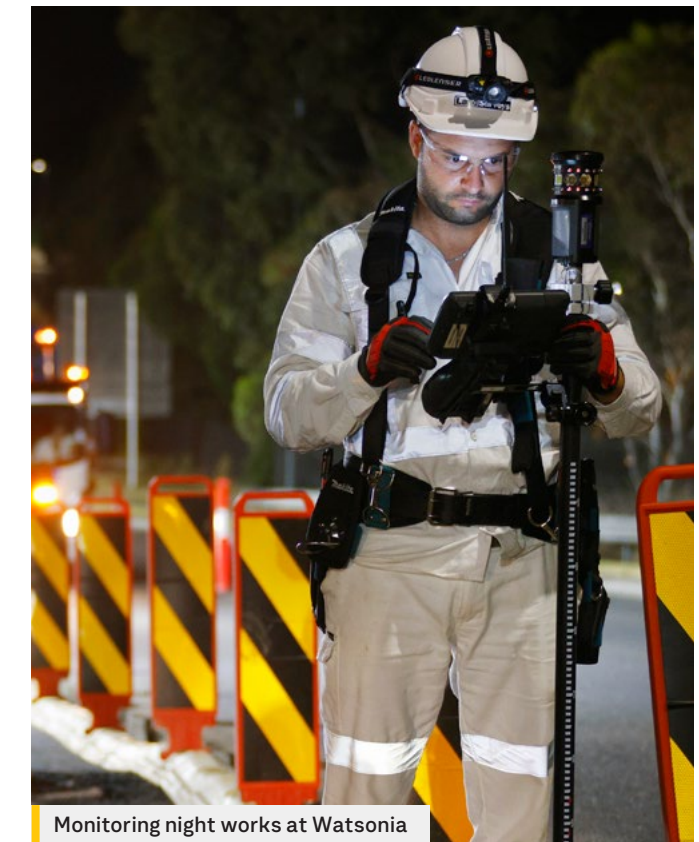
- clearly mark trees for removal and tag trees to be retained
- conduct pre-removal inspections to identify any trees where animals may live
- safely relocate animals under the supervision of a project ecologist before tree removal works go ahead
- re-use trees for landscaping and urban design, or for local community and sustainability projects
- plant two new trees for every one removed.

Workforce parking

To maintain access and car parking for residents in local streets, we've built dedicated car parks with over 900 spaces for our workers in our site compounds.



Electric piling rig at Watsonia



Monitoring night works at Watsonia

Managing noise at night

To keep traffic moving on freeways and arterial roads, and for the safety of our workers, sometimes we need to carry out works at night. Although we follow specific noise requirements and plan carefully to avoid noisy works at night, some noise is unavoidable.

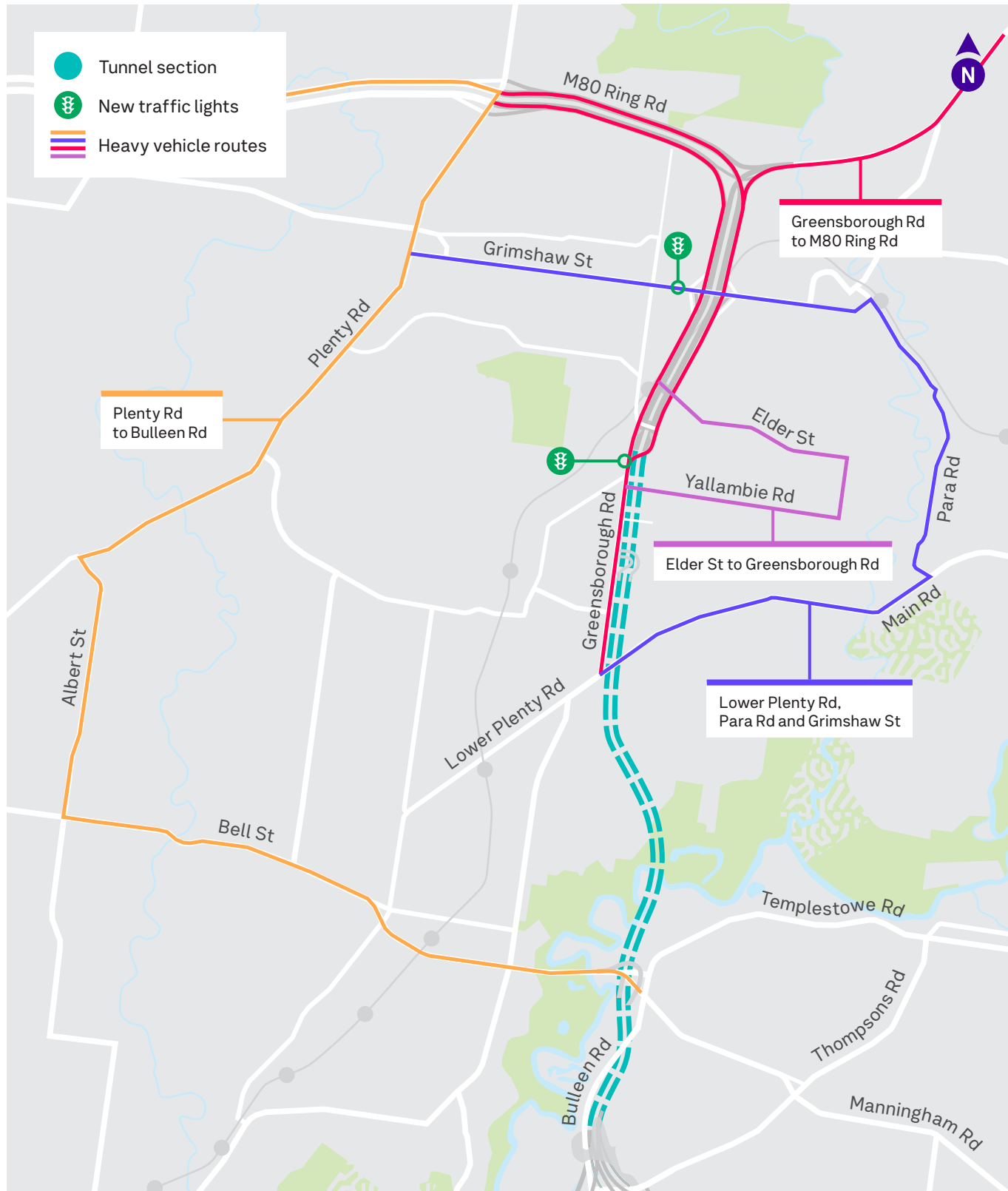
Impacts to nearby residents and businesses are managed by a range of measures, including changing the time of planned works, providing respite periods or offering temporary relocation, and using noise barriers or changing construction methods to reduce noise.

If you ever have concerns about the amount of noise, call us straight away on 1800 105 105.

SiteHive monitoring

We use a system called SiteHive to monitor noise, vibration and air quality across our worksites.

These smart devices have cameras and microphones that help us identify sources of excessive noise, dust and vibration in real-time. SiteHives are small and easy to move, which means we can place them in areas we predict may have higher impacts.



Truck movements

These dedicated routes are carefully planned to minimise impacts on traffic, residents and local streets.

To access our work areas, heavy vehicles will mostly use:

- M80 Ring Road
- Plenty Road
- Greensborough Bypass
- Greensborough Highway
- Grimshaw Street
- Elder Street
- Lower Plenty Road
- Para Road

To keep road users safe and keep local traffic moving, we're installing a new temporary signalised intersection on Grimshaw Street, near Frye Street.

We work closely with North East Link to plan truck movements and routes that minimise disruption to the local community.



We work closely with North East Link to minimise disruption to the community

Speak with the team

Our community Hub at Watsonia is a one-stop shop for project information and enquiries.

Watsonia Hub
17 Watsonia Road, Watsonia
Open 10am-5pm, weekdays

Visit anytime or contact our project team to make an appointment.

Traffic and detours

During construction, you may notice changes to some of the roads you are familiar with, particularly on and around Greensborough Highway, Greensborough Bypass and the M80 Ring Road.

This may include road and lane closures, reduced speeds, access changes and detours. There may also be changes to walking and cycling paths.

To keep traffic moving we will:

- use detours and early warning signals leading up to and around work zones
- monitor traffic in real time and make adjustments if required
- limit construction traffic and project vehicles on major roads during peak travel times
- use tailored traffic management plans for each construction area to make sure road users can move safely around work areas
- use safety barriers to keep people and road users separate from our works
- have traffic controllers, electronic signs and reduced speed limits to help you travel safely
- support people living close to works to get in and out of their properties
- provide clear and up-to-date information including detour maps for drivers, cyclists and pedestrians.

Sign up for updates at bigbuild.vic.gov.au/roads-subscribe or scan the QR code:



bigbuild.vic.gov.au/roads

contact@bigbuild.vic.gov.au



1800 105 105 (call anytime)



For languages other than English please call 9209 0147

Please contact us if you would like this information in an accessible format.

If you need assistance due to a hearing or speech impairment, please visit relayservice.gov.au