

# Ballarat Station Upgrade

Community engagement report

November 2024

Ballarat Station.



# Contents

<b>Project overview</b>	<b>3</b>	<b>Moving around the area</b>	<b>9</b>
<b>Background</b>	<b>3</b>	<b>Look and feel</b>	<b>11</b>
<b>Selecting the best design</b>	<b>4</b>	<b>What else you told us</b>	<b>13</b>
<b>Gathering your feedback</b>	<b>5</b>	<b>Next steps</b>	<b>15</b>
<b>About you</b>	<b>6</b>	<b>Project timeline</b>	<b>15</b>



*Ballarat Station.*



# Project overview

**We're building an accessible pedestrian overpass, with a passenger lift and stairs on each platform. We're also improving access to the existing northern station entrance with a new ramp, stairs and automatic sliding doors.**

We'll also upgrade some of the platform lighting and tactiles, the raised ground markers that help people who are blind or have low vision navigate through the station.

These improvements will make it easier and safer for all commuters to cross between the platforms and use the northern station entrance, closest to the bus interchange and multi-deck car park.



*The new pedestrian overpass at Ballarat Station. Artist impression only, subject to change.*

## Background

**The Victorian Government is upgrading Ballarat Station to improve accessibility, safety and connectivity for all public transport users.**

There has been sustained community feedback about the importance of an accessible pedestrian rail crossing at the station and other improvements. The Ballarat Station Upgrade will add to recent accessibility upgrades in the station precinct.

The addition of an accessible pedestrian overpass means people with disability,

and those with mobility needs, carrying luggage or pushing a pram will no longer need to leave the station to cross the rail line via Lydiard Street.

The upgrades to the northern station entrance will also improve accessibility and connectivity for people with disability and those with mobility needs.

**Major construction is scheduled to start in early 2025. The project will be complete in 2026.**



*The new pedestrian overpass at Ballarat Station. Artist impression only, subject to change.*

## Selecting the best design

### Each transport infrastructure project has specific characteristics and constraints that help inform designs.

Some of the key considerations in the Ballarat Station Upgrade planning and early design process are:

- the most suitable outcomes for people with disability or mobility requirements, prams and luggage, aligning with current accessibility legislation
- Ballarat Station’s heritage value, as guided by Heritage Victoria
- technical considerations of how a solution could be built
- minimising train and bus network disruptions to commuters
- community safety considerations
- construction impacts on station precinct users and businesses
- limited space in the precinct
- structural condition of the existing building
- existing ground conditions
- compatibility with recent upgrades in the station precinct
- future proofing the design
- impacts to utilities, rail signalling and telecommunications services.



**Find out more**

Read our Understanding the Ballarat Station Upgrade fact sheet at [levelcrossings.vic.gov.au/ballarat-station-upgrade](https://levelcrossings.vic.gov.au/ballarat-station-upgrade) or scan the QR code. This factsheet provides more information about the scope of the project, the proposed designs and the site constraints.



### Heritage considerations in the design

The Ballarat Station precinct is included in the Victorian Heritage Register, and the LXP project team will work closely with Heritage Victoria through the life of the project.

Best practice principles in the conservation of heritage places, known as the Burra Charter, state that “new works should be identifiable as such, but must respect and have minimal impact on the cultural significance of the place.”

The Ballarat Station Upgrade works are subject to approval by Heritage Victoria.

Heritage Victoria is responsible for ensuring that change at a heritage place of state significance is managed appropriately so that its cultural heritage significance is protected for the enjoyment of current and future generations.

Heritage Victoria also considers the practical needs of the station, in line with Heritage Victoria guidelines.

# Gathering your feedback

**We asked you to view the concept designs and have your say on what's important to you about the Ballarat Station Upgrade, how you use the station precinct, your ground surface and landscaping preferences and how you'd like to hear from us.**

We made the concept designs available for comment during a formal community engagement period, from Monday 3 June until Sunday 7 July 2024.

Your feedback reflected in this report was collected through an online survey on the Engage Victoria website. Printed surveys with a reply paid envelope were available by request.

We also invited the community to ask questions on our Engage Victoria project page and speak to the project team at our online and in-person information sessions and pop-ups at Ballarat Station.

The feedback received helps us understand what's important to the community.

**Thank you to all who asked us a question, filled in the survey and attended an information session.**

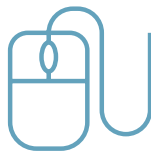
## Your feedback

**There was a high level of community interest in the project during the engagement period.**

**734**



survey responses received



**3,845**

people visited our Engage Victoria project page



**40**



people attended our community information sessions either online or in-person

**50**



commuters spoke with us at Ballarat Station information pop-ups

**73**

questions asked on Engage Victoria

**17,400**



people saw our social media content about the concept designs

**779**



people liked or commented on the posts

**695**



people clicked on the Engage Victoria link on the posts



**3,600**

Community Updates sent to local businesses and households

**697**



visits to the project page on Victoria's Big Build website

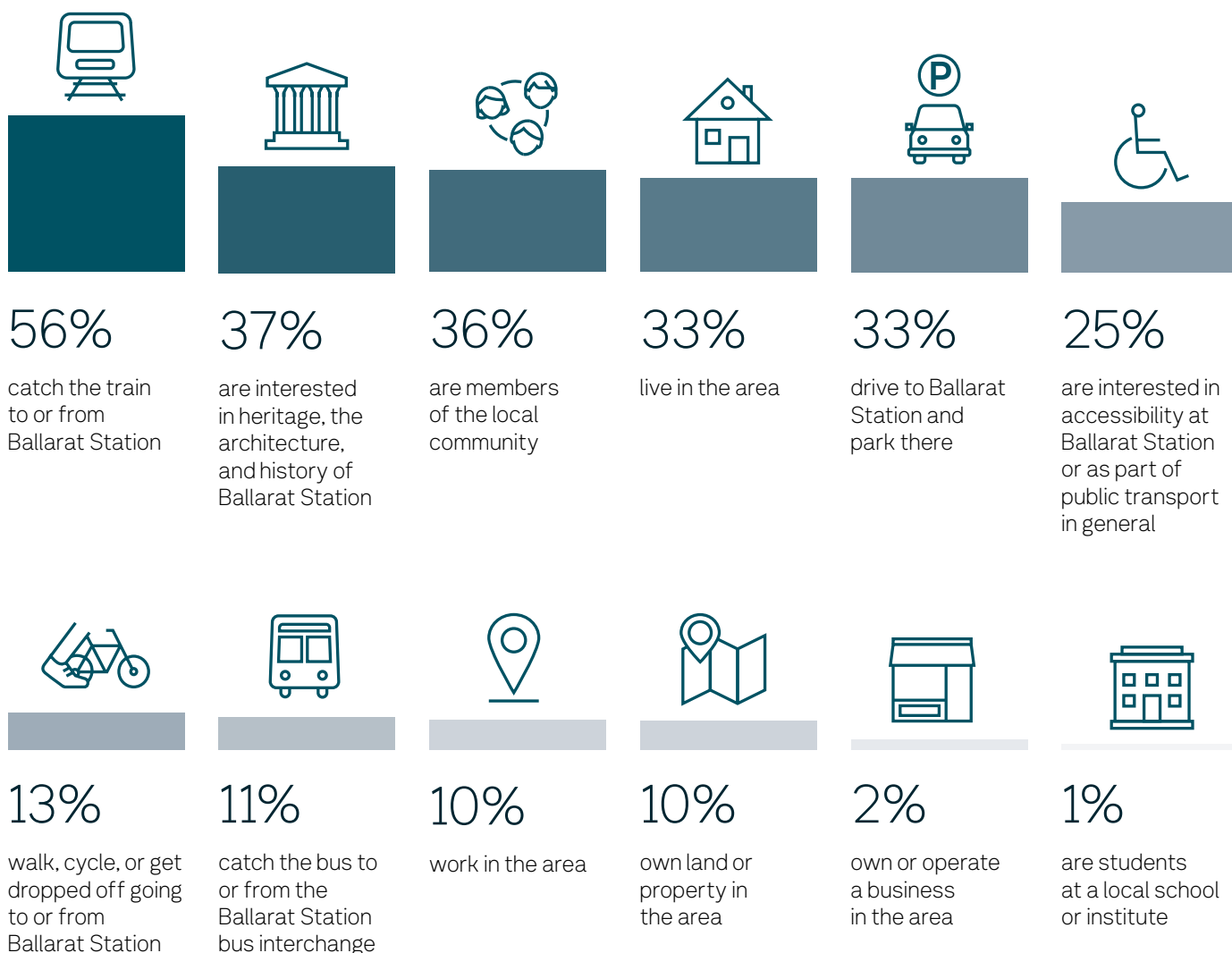


# About you

We asked you to share your preferences, insights and feedback on the project.

Here's some information about you and the other respondents:

## Your interest in the project



### About the data

Data in this report comes from the 734 responses to the community survey.

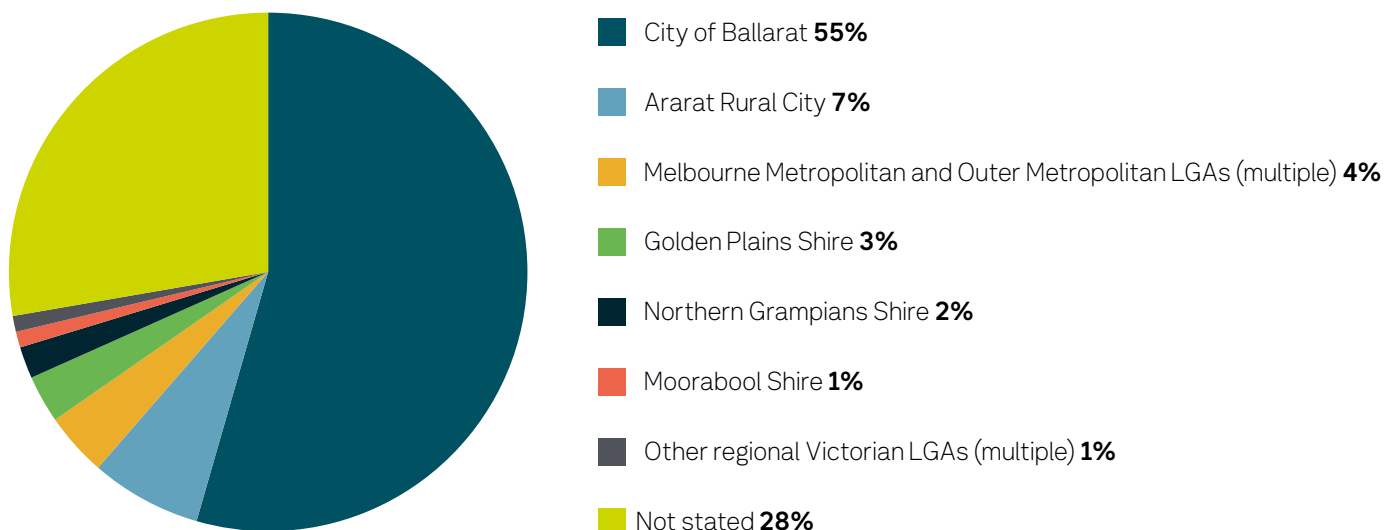
*Note that some survey questions had multi-select response options. In these cases, percentages total more than 100%.*

*Other questions required a single response. In these cases, questions may be slightly above or below 100% due to rounding.*

Inside the new Ballarat Station overpass.  
Artist impression only, subject to change.

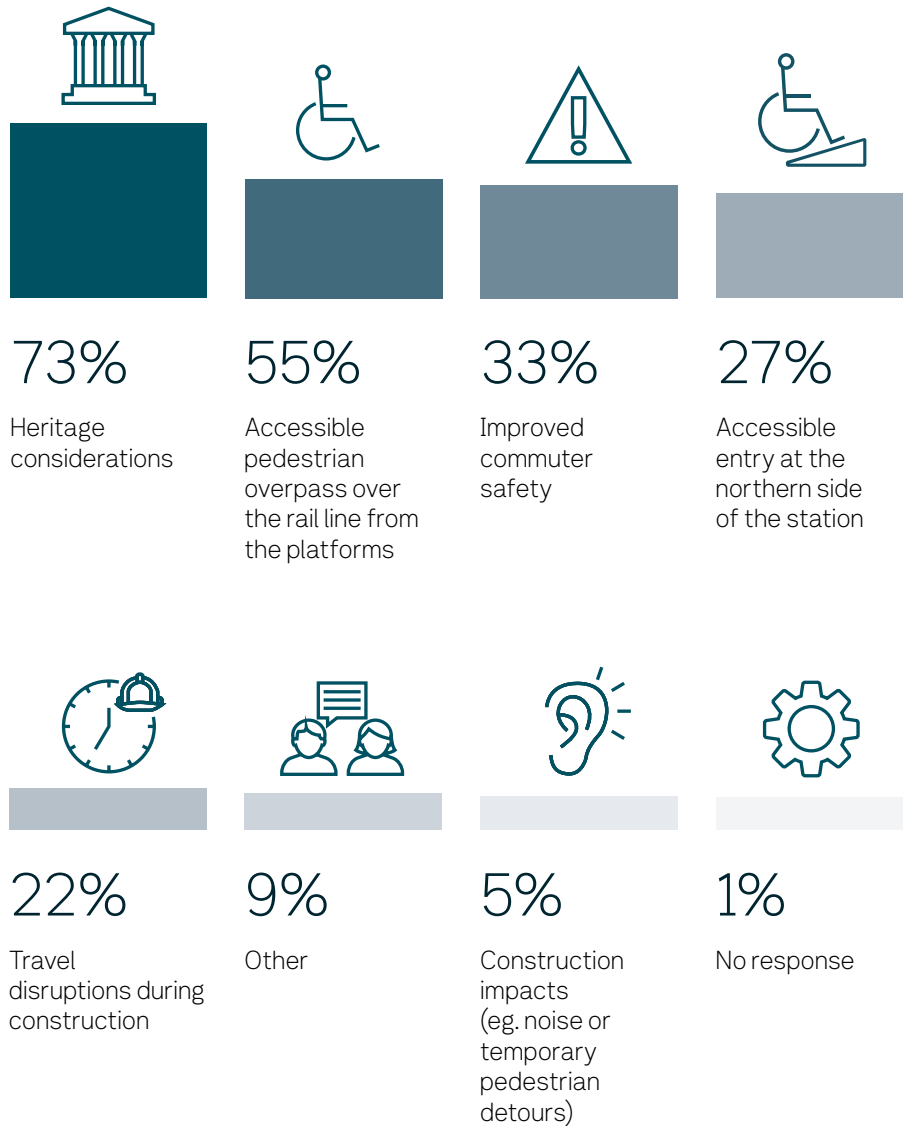


## Where you live – by Local Government Area



# Aspects of the Ballarat Station Upgrade that are most important to you

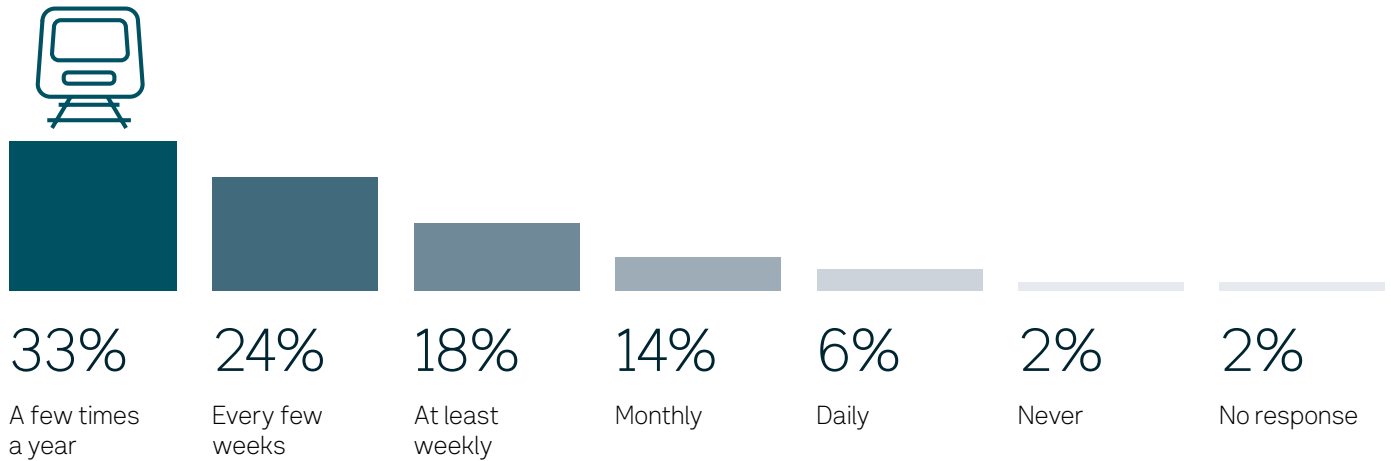
We asked you to select your top three areas of importance.



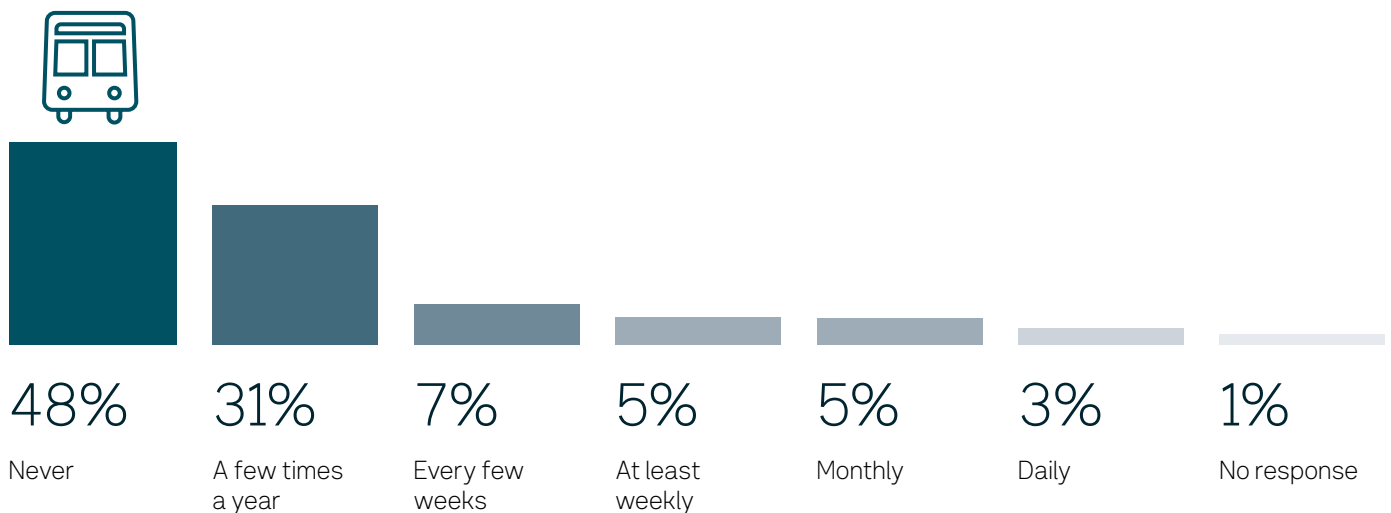


# Moving around the area

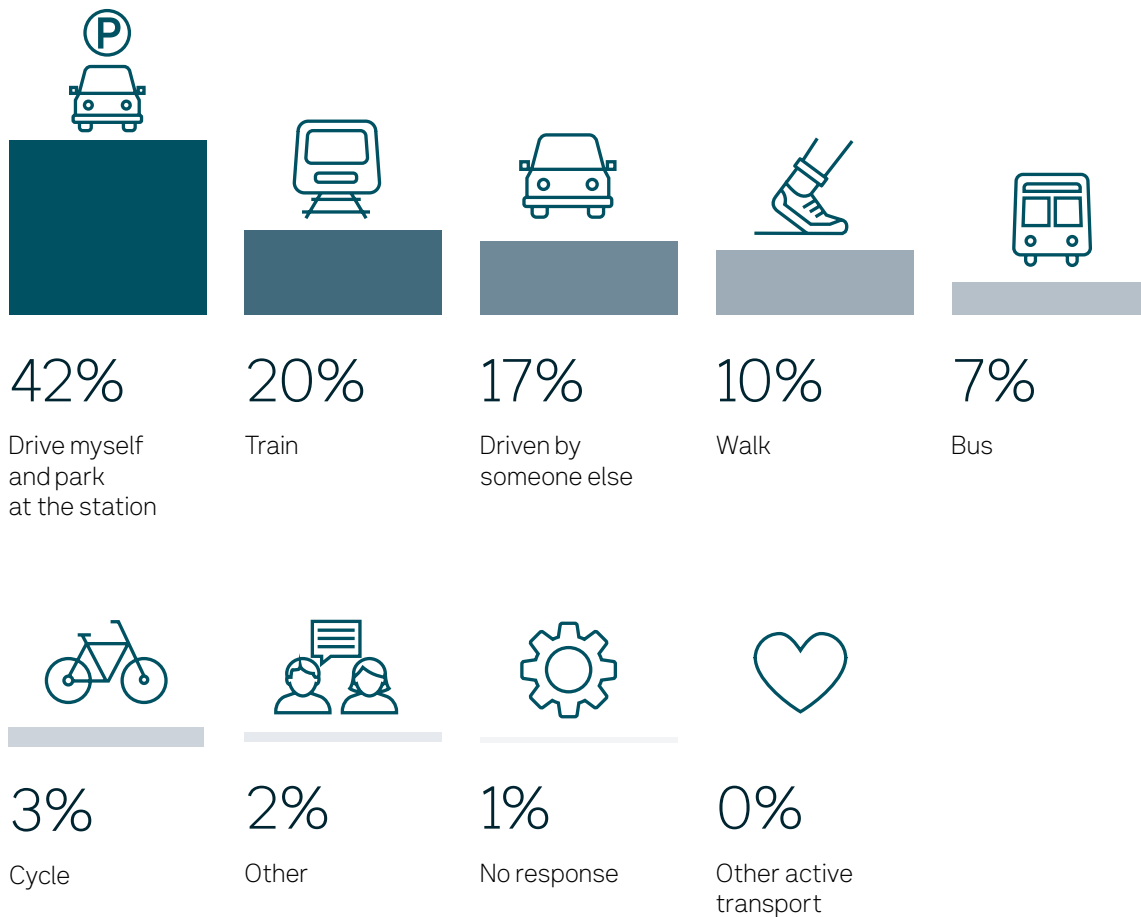
We asked you how often you catch the train to or from Ballarat Station.



We asked you how often you catch the bus to or from Ballarat Station.

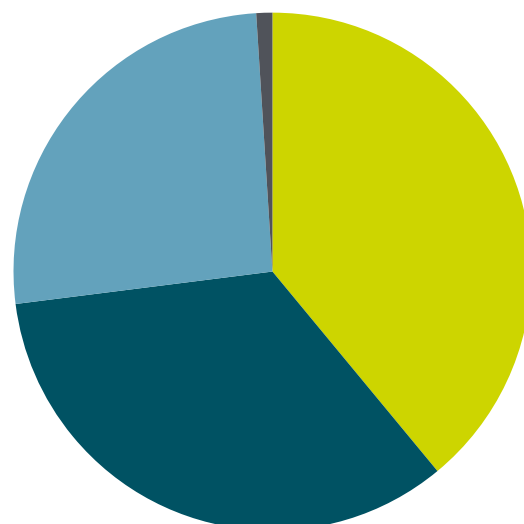


We asked you about your preferred method of travel when going to Ballarat Station to start your journey.



We also asked whether you would be more likely to use Ballarat Station after the upgrade.

- Yes **39%**
- No **34%**
- Not sure **26%**
- No response **1%**



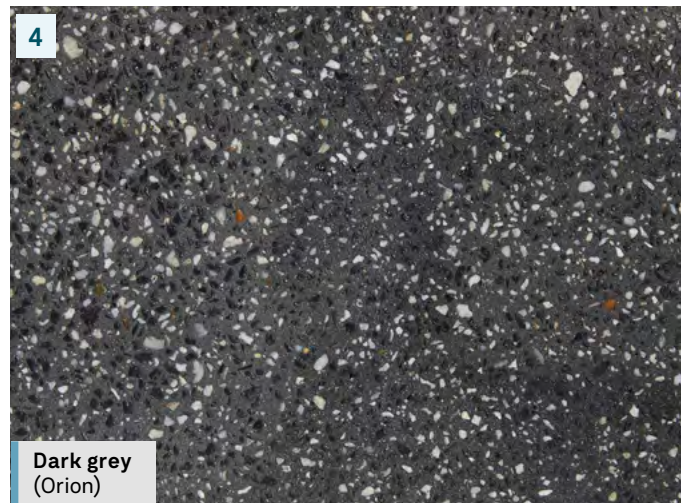
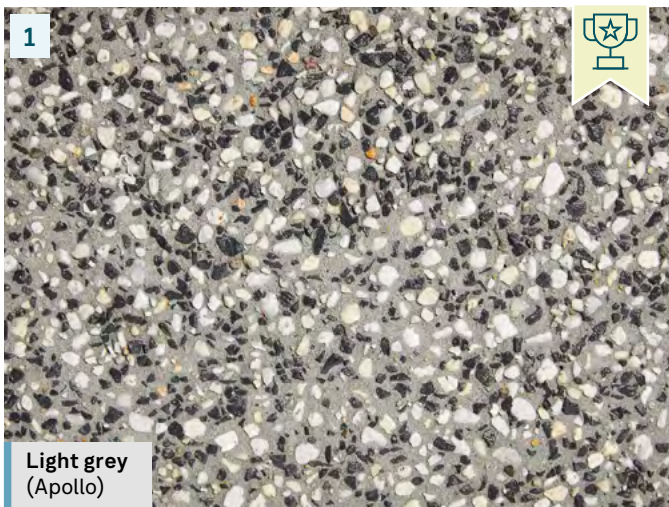
# Look and feel

## Ground surfaces

We asked you to tell us what ground surfaces you prefer for the upgraded entry on the northern side of the station.

Out of the four exposed aggregate concrete examples provided, **most people preferred the light grey (Apollo)**, followed by warm tone (Jupiter), dark grey (Andromeda) then dark grey (Orion).

Here are the images ranked in order of preference:





# Landscaping

We asked you to tell us what types of plants you prefer for the upgraded entry on the northern side of the station.

Out of the seven examples of native ground level plants and native ground flowering plants, **most people preferred a mix of both native ground level plants and native ground flowering plants.**

The next most preferred options were two of the native ground flowering plants (Hardenbergia violacea indigenous form then Myoporum parvifolium), followed by two of the native ground level plants (Lomandra confertifolia then Lomandra tanika).

Here are the options ranked in order of preference:



# What else you told us

The Ballarat Station Upgrade project specifically addresses improved accessibility in the form of an accessible pedestrian overpass, new lift and stairs to each platform and upgrading the northern entrance.

The community survey informed us on:

- what's important to you about the project
- how you use the station precinct
- your ground surface and landscaping preferences
- how you'd like to hear from us.

To help us understand what's important to you in more detail, we also asked whether there was anything else about the project you would like to tell us. Many of the responses were about items outside the scope and funding for the Ballarat Station Upgrade.

All of your feedback however has been captured and sent to the project team and our partners at the Department of Transport and Planning and V/Line.

Here are the most frequently mentioned key themes from this feedback.



## How heritage has been considered in the concept designs

You told us that you would like the designs to better reflect the heritage of the precinct. Many of these comments requested a unique design for the overpass at Ballarat Station, with a heritage look to differentiate it from other overpasses built at nearby stations. Others questioned whether the external built structures could look less modern. Some people told us they didn't want the new structures to interrupt views of the existing buildings.



## Support for accessibility

You told us you agree that accessibility improvements at Ballarat Station are important. Some of you stated that you would like to see additional accessibility improvements delivered at Ballarat Station.



## The overpass design solution

We received feedback regarding alternative locations for the overpass, with some expressing a preference for the overpass to be located inside the train hall. Other people stated they would prefer the overpass to be located further east of the train hall than the proposed location. Some respondents suggested that an underpass design be reconsidered.



### **Landscaping**

In addition to the preferences given for the landscaping options presented in the survey, some people suggested they would like to see trees planted in the precinct and more traditional English style plants that would have been selected in the 1800s when the station was first built.



### **Lighting and signage**

You told us you wanted to ensure that our project designs incorporate best practice lighting and signage in the areas we will be working on and improved lighting, safety and signage in the existing precinct.



### **Other station, precinct and service improvements**

We received a broad range of other feedback regarding aspects of the station and precinct. This included requests for additional and improved parking, seating and waiting areas. Some people said they would like the station kept cleaner. Others requested more train and bus services at Ballarat Station and more coordination between the existing services.



The new ramp and stairs at the northern entrance of Ballarat Station. Artist impression only, subject to change.



## Next steps

### Thank you to everyone who provided feedback.

Your feedback will help inform aspects of the final designs for the project, which will be released in late 2024.

**When the final designs are released, you will have the opportunity to ask questions about the final designs and chat to the project team.**



### Stay up to date

**Be the first to know about updates on the Ballarat Station Upgrade.**

Sign up for email updates at [levelcrossings.vic.gov.au/subscribe](https://levelcrossings.vic.gov.au/subscribe)

Text **BALLARAT** to **0427 840 967** to subscribe to SMS updates.

Find the latest information about the project at [levelcrossings.vic.gov.au/ballarat-station-upgrade](https://levelcrossings.vic.gov.au/ballarat-station-upgrade)

### Project timeline



**2023**

- Site investigations and planning works



**Mid 2024**

- Concept designs released
- Community engagement



**Late 2024**

- Final designs released
- Further community engagement



**2025**

- Major construction



**2026**

- Pedestrian overpass opens
- Major construction complete






\* Timeline subject to change.

**levelcrossings.vic.gov.au**

contact@levelcrossings.vic.gov.au



For languages other than English, please call 9209 0147.

1800 105 105 (call anytime)     

Please contact us if you would like this information in an accessible format. If you need assistance due to a hearing or speech impairment, visit [relayservice.gov.au](http://relayservice.gov.au)

