



**SUBURBAN
RAIL LOOP**

Newsletter

March 2025

CHELTHENHAM

Help us plan your neighbourhood

Suburban Rail Loop (SRL) will not only transform our public transport network – as Australia’s largest housing project it will also help deliver thousands more homes, jobs and services to the areas around the new stations.

To help achieve the balance of more quality housing choice, more jobs, and improved local amenities and open spaces, we need to change some of the planning rules. Draft structure plans and draft planning scheme amendments have been released for the neighbourhoods around the six SRL East stations – including your local area.

These documents take into account the extensive community and council feedback we’ve heard over several years – and we again invite the residents and traders of Cheltenham to have their say.

The draft structure plan includes proposed changes to land use, height limits and building designs, car parking, open space, connections and many other urban planning outcomes that will help ensure Cheltenham grows sustainably and remains a vibrant place to live in the decades ahead.

Take a look inside to see more details about the future direction of your neighbourhood, including how we’ve responded to your feedback. You’ll also find information about where to speak to our experts and how to make a submission – so you can help shape your community for the next generation.



Works in Cheltenham

What’s in store for 2025

We’re pushing ahead with major construction of SRL East and preparing launch sites for the tunnel boring machines (TBMs). The first TBMs arrive on site later this year, ready to start tunnelling in 2026.

Take a look inside to see what crews are doing in Cheltenham in 2025.

More information
suburbanrailloop.vic.gov.au



Cheltenham in 2041 with SRL



4,500
additional homes



12,000
additional jobs

How we've responded to your feedback in the draft structure plan

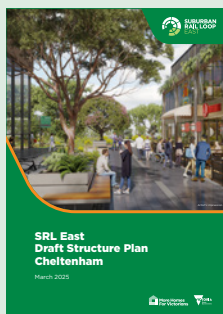
We've reduced proposed building heights in some areas, including:

Location	From	To
Highett Common (former CSIRO site)	18 storeys	8 storeys
Parts of South Pennydale and around Turner Road and Mount View Road	6 storeys	4 storeys
Eastern side of Chesterville Road	10 storeys	6 storeys

- The draft structure plan encourages a mixed-use centre integrating Southland shopping centre with the new SRL East station.
- New developments will need to provide appropriate setbacks and avoid adverse overshadowing on streets, open spaces and private areas.
- The structure plan identifies opportunities for new open space, as well as improvements to Lyle Anderson Reserve and other spaces.
- A new and improved walking and cycling network will be established, which will include pedestrian crossings and better connections between the new SRL East station and the bus interchange and existing train station.



Housing in Cheltenham



How to make a submission

Submissions relating to the Cheltenham Draft Structure Plan and planning scheme amendment must be received by **11.59pm on Tuesday 22 April 2025**.

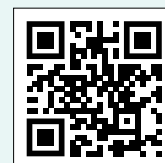


To make your submission, head to engage.vic.gov.au/srl-east-structure-planning or scan the QR code, click 'Make a submission' and follow the prompts.

Need help?

Copies of the draft structure plans and planning scheme amendments are available to read at the Bayside City Council office at 76 Royal Avenue, Sandringham, the Kingston City Council office at 1230 Nepean Highway, Cheltenham and Highett Library at 310 Highett Road, Highett.

If you need help to make a submission there will be webinars coming soon and local information sessions where you can chat with our team.



Head to engage.vic.gov.au/srl-east-structure-planning for details.

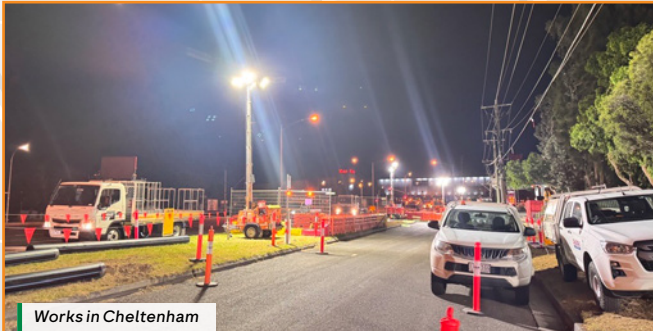
SRL East in 2025

2025 is SRL's biggest year yet, with major construction underway and tunnel boring machines arriving.

Tunnelling starts in 2026



Six SRL East tunnel boring machines (TBMs) have been ordered and will start arriving on site later this year. Next year, they'll launch from sites in Clarinda and Burwood to begin carving the 26 kilometres of twin tunnels. These TBM launch sites are now under construction.



Works in Cheltenham

Cheltenham works

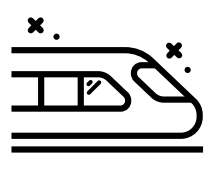


Crews are moving services this year to make way for the new underground station and twin tunnels. Demolition works are also planned from mid-2025 on the corner of Nepean Highway and Bay Road.

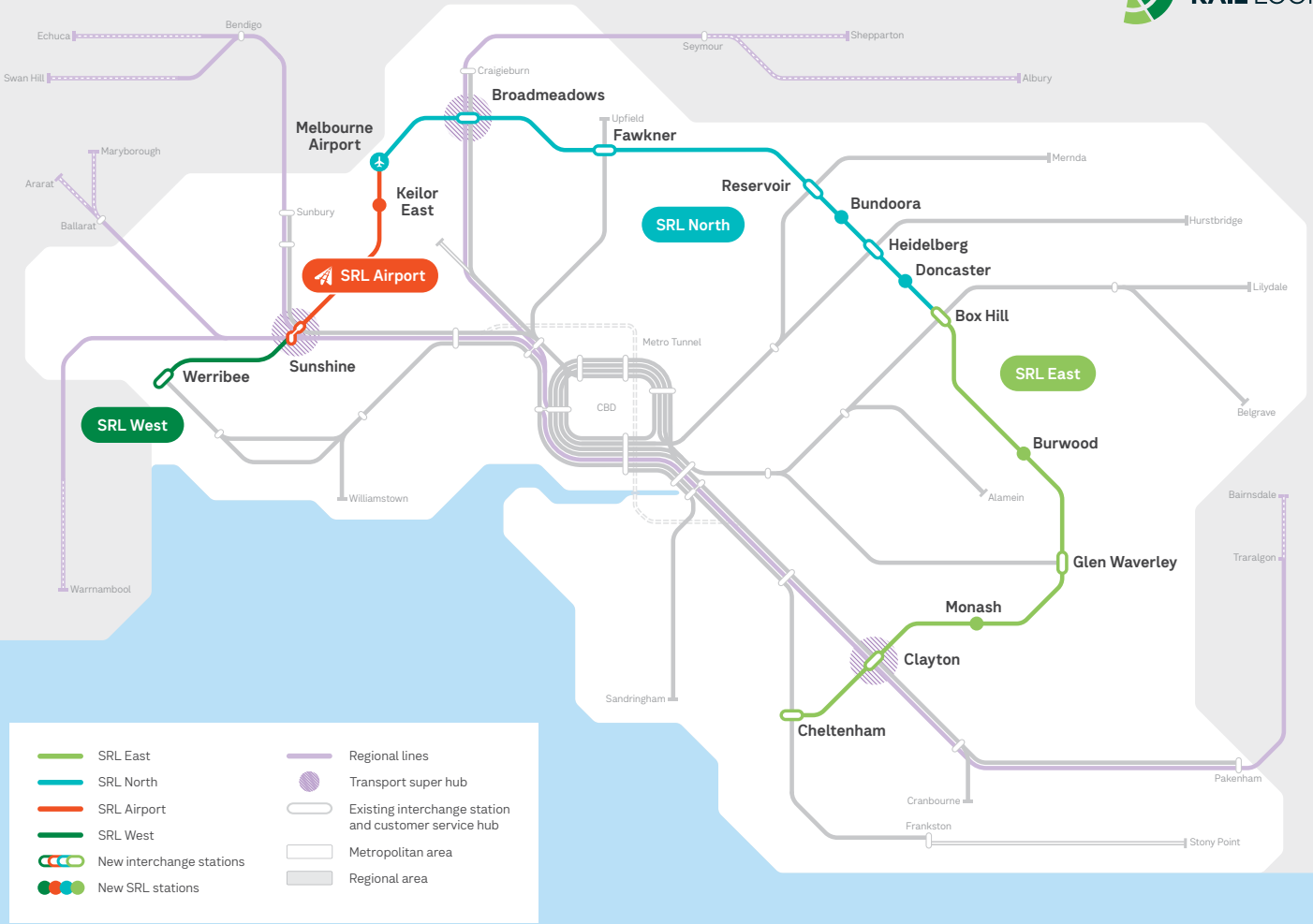


- SRL East underground station
- Transport super hub (regional connection)
- SRL East rail tunnel alignment
- Existing rail alignment
- SRL rail tunnel continued
- Stabling facility
- TBM launch site

Did you know?



SRL East opens in 2035, making it faster and easier to get to work, university, medical appointments, shops and restaurants. Around 70,000 passengers will use SRL East every day.



For illustrative purposes, subject to further detailed technical investigations and consultations.

Work is progressing on Suburban Rail Loop and 2025 will be the project's busiest year yet. We have translated this newsletter into other languages to keep everyone updated about Suburban Rail Loop news.



Scan the QR code on your smart phone for more information or go to our website.

郊區鐵路環線 (Suburban Rail Loop) 工程現正進行中，而 2025 年將會是目前為止我們最繁忙的一年。

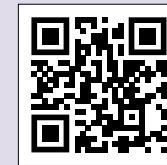
此通訊已翻譯成多種語言，您可透過各語言版本瞭解郊區鐵路環線之最新消息。



使用手機掃描 QR 碼，以獲取更多資訊或瀏覽相關網頁。

近郊铁路环线 (Suburban Rail Loop) 项目工作正在推进，2025年将会是目前为止我们最繁忙的一年。

我们将这份通讯翻译成多种语言，帮助您及时了解近郊铁路环线项目的最新消息。



请用智能手机扫描二维码了解更多信息，或直接访问我们的网站。

contact@srla.vic.gov.au | 1800 105 105 (call anytime)
suburbanrailloop.vic.gov.au

Please contact us if you would like this information in an accessible format.
If you need assistance due to a hearing or speech impairment, please visit relayservice.gov.au



For languages other than English please call 9209 0147

如需非英语信息，请拨打 9209 0147

अंग्रेज़ी के अलावा अन्य भाषाओं के लिए कृपया 9209 0147 पर कॉल करें

Đối với các ngôn ngữ khác tiếng Anh, vui lòng gọi số 9209 0147