



Heatherton Community Reference Group

Meeting #11

29 April 2025



We respectfully acknowledge the Traditional Owners of this land
and pay respect to their Elders, past and present.



Welcome

Agenda

Topic	Speaker
Welcome	Kim
Addressing questions	All
Break	All
Initial and Early Works update	Laing O'Rourke
Tunnels South update	Suburban Connect
Forward program	Laing O'Rourke and Suburban Connect
Actions	Kim
Other business	All

Addressing questions

Air quality

Air quality monitoring – TBM launch site | Suburban Connect



TBM Launch site air quality monitoring locations

SC monitors air quality at four locations around the TBM launch site

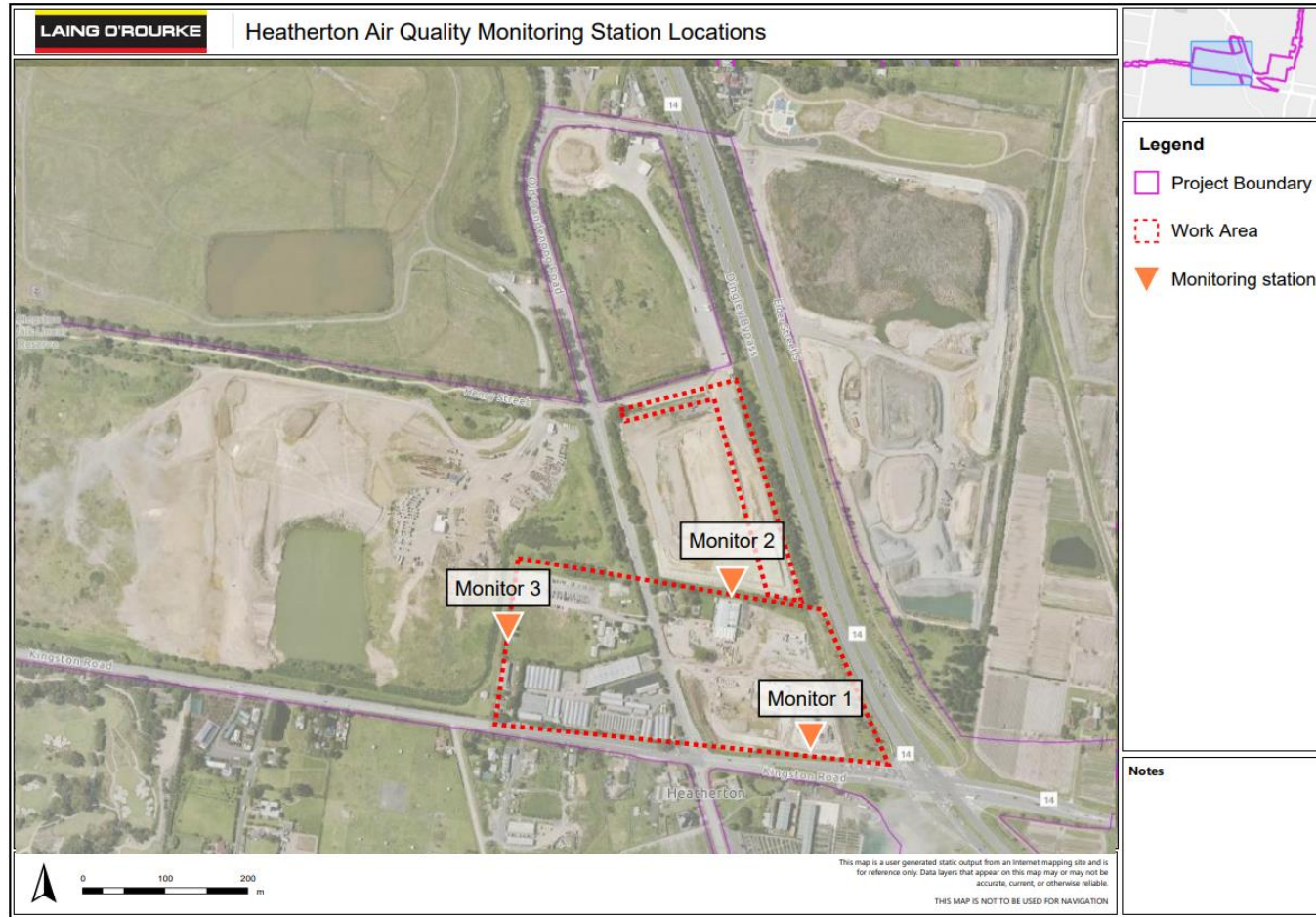
Measurements are based on EPA Victoria Guidelines (same as the EES criteria), which recommend reactive trigger levels for PM10 measurements

Results are reported on a monthly basis and are available on SRLA's [website](#).

19 February to 18 March results:

- 4 instances where controls were implemented to mitigate impacts from dust emissions
- Mitigations included water cart spraying haul roads and work areas

Air quality monitoring – eastern tunnel entrance | Laing O'Rourke



LOR monitors air quality at 3 locations around the Heatherton site

Measurements are based on EPA Victoria Guidelines (same as the EES criteria), which recommend reactive trigger levels for PM10 measurements

Results are reported on a monthly basis and are available on SRLA's [website](#).

19 February to 18 March results:

- 8 instances where controls were implemented to mitigate impacts from dust emissions
- Mitigations included water carts, hoses and street sweeping

Monitor 3 installed in March 2025

Air quality monitoring – western tunnel entrance | Suburban Connect



Western tunnel entrance air quality monitoring locations

SC monitors air quality at two locations around the Western Tunnel Entrance site

Measurements are based on EPA Victoria Guidelines (same as the EES criteria), which recommend reactive trigger levels for PM10 measurements

Results are reported on a monthly basis and are available on SRLA's [website](#).

1 February to 14 April* results:

- 2 instances where controls were implemented to mitigate impacts from dust emissions
- Mitigations included water cart spraying haul roads and work areas

*Results within this time-period have been provided at request of a CRG member. Monthly air quality reports are available online.

Air quality controls | across sites

SRL contractors proactively implement the following controls to manage air quality:

- create hard, non-dust generating internal work areas, parking and roads ie. asphalt, gravel
- cover / water down stockpiles as required
- cover truck loads and implementing speed restrictions
- use watercarts to wet down areas
- seed or spray finished work areas with soil binder
- reduce or stop works during windy conditions
- review air quality monitoring results to assess if works require additional controls to be implemented

In instances where all available controls have been implemented, and air quality monitoring results require a response, the project will reduce or stop works, or not re-commence until monitoring shows levels within an acceptable level

Asbestos air monitoring – western tunnel entrance | Monitoring results

Date	Sample Location	Sample period (start-finish)	Avg. flow (mL/min)	Fibres per mL of air
Saturday 5 April 2025	Southern boundary near Kingston Road	06:48 – 12:23	1500	<0.01
	Western boundary adjacent residential area, on fence	06:38 - 12:16	1500	<0.01
Tuesday 8 April 2025	Western boundary near residential properties, on fence	06:35 - 15:31	1000	<0.01
	Southern boundary near Kingston Road	06:31 – 15:36	1000	<0.01
Wednesday 9 April 2025	Western boundary near residential properties, on fence	06:35 - 15:31	1000	<0.01
	Southern boundary near Kingston Road	06:59 – 15:52	1000	<0.01
Friday 11 April 2025	Western boundary near residential properties, on fence	06:55 – 13:59	1500	<0.01
	Southern boundary near Kingston Road	06:51 – 13:48	1500	<0.01
Saturday 12 April 2025	Southern boundary near Kingston Road	06:52 – 12:44	1500	<0.01
	Western boundary near residential properties, on fence	06:59 – 13:07	1500	<0.01

Note: This table provides a sample of results across multiple monitoring sites to provide an overview of the results across the worksite.

Monitoring for the presence of any airborne asbestos fibres has been occurring at the Western Tunnel Entrance since 13 September 2024.

All air monitoring results to date have been below the limit of detection for the sampling method (<0.01 fibres/ml of air), providing assurance the controls in place are effective.

Noise and Vibration

Noise monitoring

- The project is continuing to monitor noise levels 24 hours per day at various locations around the Heatherton and Clarinda sites
- Between February and April 2025 there have been zero confirmed exceedances of modelled noise levels



★ Monitor approx. location

Noise and Vibration

- Low level frequency noise is normal for major construction works and experienced differently by different people (some people are not affected at all, while others may feel discomfort).
- Since identifying low frequency noise last month, we have replaced some of our plant and machinery and changed our construction methodology including the sequencing of our works.
- While we undertake works to construct the Western Tunnel Entrance nearby residents may experience the effect of low-level vibration outside their property and within homes.
- Based on our modelling and our field monitoring (both at source and at receiver), our vibration emissions fall well under those that trigger structural damage to dwellings.
- The project continues to encourage households to take up property condition survey offers if they have not done so already.

Working with community

The Community Crew



The Community Crew has been introduced to support residents, businesses, and stakeholders located near the Suburban Rail Loop (SRL) East tunnelling works, particularly in areas like Clayton, Clarinda, and Heatherton.

Their role is to offer practical help such as:

- Cleaning windows
- House exteriors
- Washing cars
- Garden maintenance

The team is employed through **Wallara, a non-profit organisation** that supports adults with different abilities, giving the program a strong community and inclusion focus.



Mitigations offered | Supporting community

Mitigation is offered on a case-by-case basis and guided by the *SRL East Residential Support Guidelines*.

- Noise cancelling headphones
- Vouchers for movies, meals, car wash
- White noise machines
- Community Crew – completing a variety of tasks
 - Car wash
 - House window clean
 - Garden clean up
- Day time respite offers
- Short term relocation
- Medium term relocation

Communication and engagement | Update

- Since last CRG (February), Laing O'Rourke received **32 complaints** from 25 stakeholders (as at 16 Apr)
- Key themes included:
 - Changes to traffic light sequencing
 - Traffic impacts – road closures, detours, signage
 - Noise and light spill at night
- Since last CRG (February), Suburban Connect received **79 complaints** from 41 stakeholders (as at 16 Apr).
- Key themes included :
 - Vibration, dust, air quality and low frequency noise

Break

Initial and Early Works

Current works

Eastern tunnel entrance

- Stage 1 and 2 of excavation works completed in March and April 2025
- Next stage of excavation planned in June 2025
- Strut installation to commence in May and will continue until September 2025.

Stabling Network Support Facility

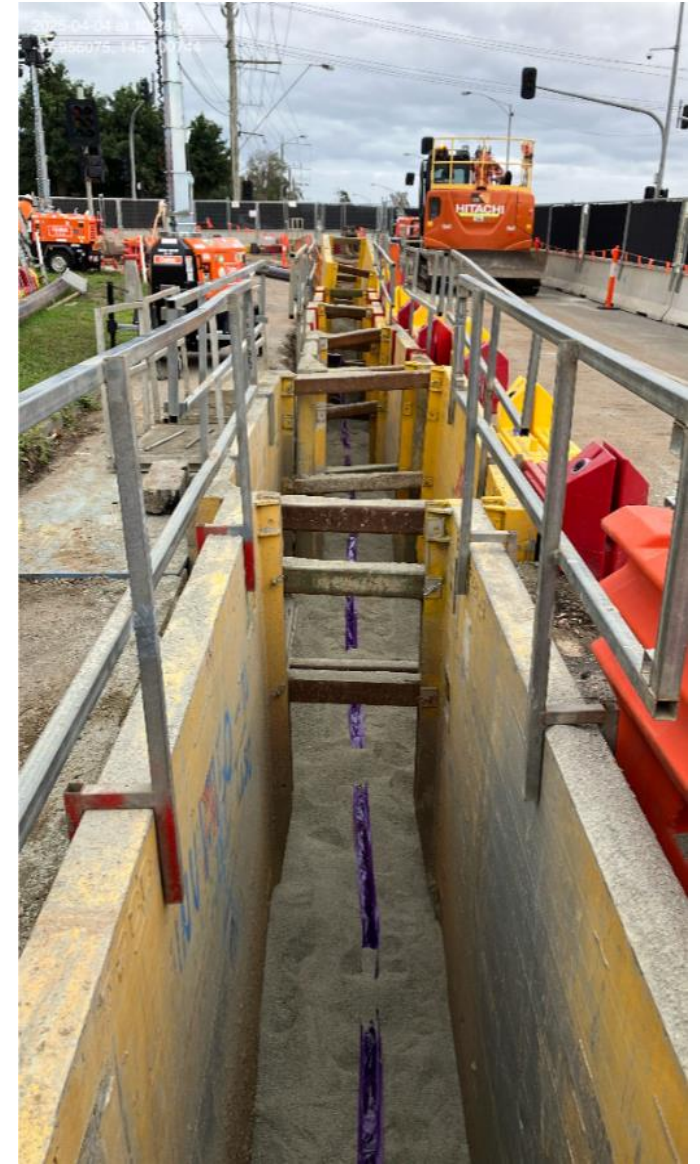
- Transformers installed
- 22kV building has been commissioned, not in use.
- 66kV building equipment being installed.



Current works | Kingston and Old Dandenong roads

Water & power relocations

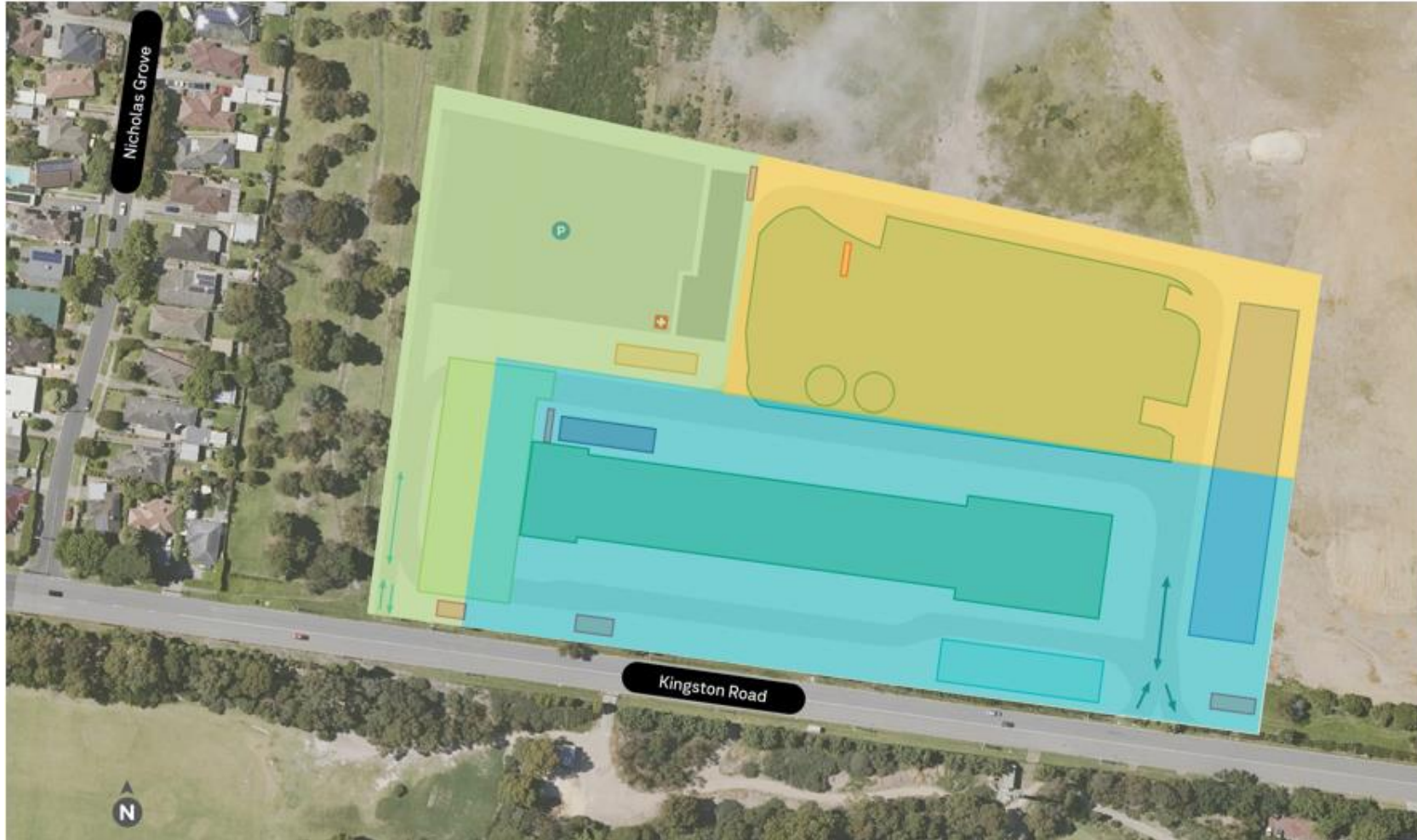
- Water and power relocation works on Kingston Road will continue intermittently in May and June
- Westbound lane closures between Dingley Bypass and Old Dandenong Road to commission new water main, remove existing main and reinstate road
- Night-time closures between Dingley Bypass and Old Dandenong Road required at times to facilitate works
- Southbound lane closure on Old Dandenong Road to tie in recycled water main in May/June
- Up to two day-time shifts may be required for power pole relocation works – dates to be confirmed based on service provider availability



Tunnels South update

Western Tunnel Entrance, Heatherton

Roller locations for 2025 | Western Tunnel Entrance



The function of the roller is to compact material to enable a stable surface for several functions:

- Hardstand
- Positioning of heavy equipment
- Creation of driveways

April - June

June - July

May- September

Note: Roller locations and timings are approximate and may change

Current works | Western Tunnel Entrance

- Site levelling and excavation continues
- Removal of hazardous material continues (ACM) ongoing
- Creation of hardstands ongoing
- Roller moves away from western boundary area from late June
- Installation of permanent fencing and hoarding ongoing until around June
- Connection to sewer main within Kingston Linear Reserve "Buffer Zone" using hand tools – date to be confirmed
- Mobilising onsite offices
- Utilities and drainage works ongoing
- Light vehicle entrance completed around mid-June
- Current Kingston Rd traffic changes in place at western end of site until late-June.



Hoarding | Design update

- Community consultation from 20 March to 6 April inviting feedback on the preferred design for hoarding in the Kingston Walk Linear Reserve
- 93% of respondents voted for option A
- Design will be installed along the western boundary of the Stabling Facility once hoarding has been installed.



Option A



Option B



Option C



TBM Launch Site, Clarinda

Current works | TBM Launch Site

- Bund removal complete, including the removal of hazardous material
- Bored piling continuing, including night works, through to June
- Establishment of car park and offices
- Hoarding installation mid-April through to mid-May
- Backfilling of ponds from May through to July
- Commencement of D-Walls early June
- Works for site office
- Continued night works upcoming (pending approval)



Current Works| Clarinda Network Support Facility

- Construction activities now complete
- United energy to connect to power in stages



Forward program

Heatherton | Works lookahead

OFFICIAL

Works	May	Jun	Jul	Aug	Sep	Oct	Nov	Dec
Kingston Road								
Water/power/final lighting connections								
Elder Street Sth, Henry Street, Old Dandenong Road and within site (near Dingley Bypass)								
Utility relocations								
Network support facility (NSF)								
Building construction and fit out								
Eastern tunnel entrance								
Excavation and steel strut installation								
Base slab concrete pours								
Western tunnel entrance								
Permanent fencing and hoarding complete								
Site levelling and excavation, creation of hard stands, light vehicle entry, carpark								
D-walling								
Jet grouting								



Tunnels South works package (Suburban Connect)
Initial Works and Early Works package (Laing O'Rourke)

NOTE: timing is indicative and
subject to change



Clarinda | Works lookahead

Works	2025							
	May	Jun	Jul	Aug	Sep	Oct	Nov	Dec
Clarinda TBM launch site								
Bored piling (includes night works)								
D-wall (includes night works pending approval)								
Jet grouting (includes night works pending approval)								
East and west shaft excavation (includes night works pending approval)								
Kingston Road								
Water connection – westbound lane closure, approx. 2 weeks (TBC)								

NOTE: timing is indicative and subject to change

Actions

Actions

Action	Owner	Due	Status
LOR and SC to provide a presentation on the trigger levels for air quality monitoring and response protocols at a future meeting.	LOR/SC	April CRG	Closed
SC to confirm if residential fences along Kingston Walk Linear Reserve can be replaced	SC	February CRG	Closed

Future presentation opportunities

1. Traffic assessment process including Kingston Road traffic assessment
2. Urban Design Advisory Panel
3. Public Open Space offset process and timeline
4. Ground improvement scope update
5. Updated scope for each work package since the EES

Other business

Questions

