

May 2025



Works Notification

Sewer relocation works on Estelle Street

We're upgrading the Eastern Freeway with new express lanes, new traffic management technology, Melbourne's first express busway and a seamless connection to North East Link.

We've established a worksite next to Estelle Street and removed large quantities of soil ready to start installing drainage, relocating sections of the Koonung Creek Main Sewer and installing new pipes to connect nearby properties to the new sewer. These works are needed to make room for the new Eastern Busway lanes and upgraded noise walls.

While most of these works will be completed behind timber fencing, some works will take place on Estelle Street. While we work, we'll set-up temporary work areas on sections of Estelle Street and have traffic controllers in place to ensure traffic can move safely through the area. We'll maintain access to your driveway at all times.

There will be further changes to traffic conditions on Estelle Street later this year as part of these works. We'll continue to update you of these changes as works progress.

What we're doing

From mid-June to August 2025, traffic will be reduced to one lane with two-way access in place between 1-19 Estelle Street during work hours only. Works will include:

- setting up traffic management
- installing new drainage
- removal of several trees
- installing barriers to temporarily increase our work area
- removing sections of the timber fencing
- trenching across Estelle Street to install new sewer pipes

The traffic set-up will be removed at the end of each shift and steel plates will be placed over the road to allow traffic to travel both ways.

Sign up for updates
bigbuild.vic.gov.au/roads-subscribe

Where and when

Day works: 7am to 6pm Monday to Friday and 7am to 3pm Saturdays

No works are currently being completed at night. If this changes, we'll speak to residents about planned night works ahead of time.

What to expect

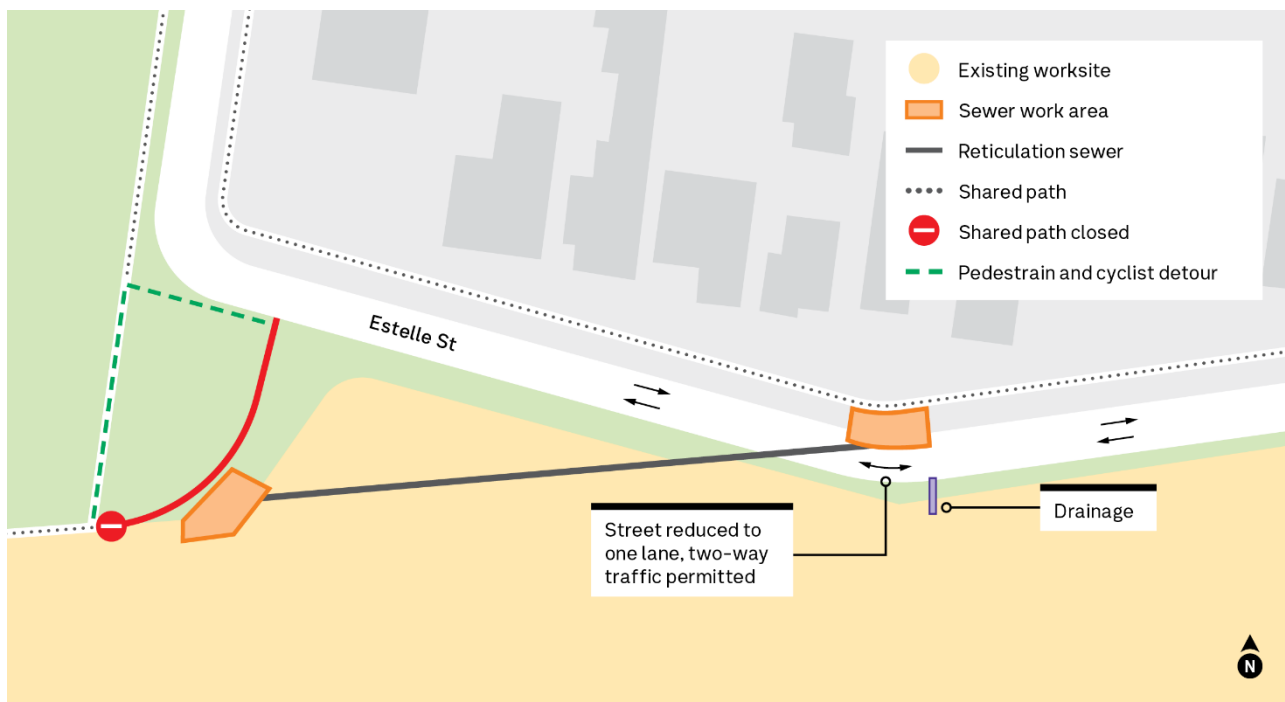
During these works, you'll also notice:

- minor delays as traffic will be reduced to one lane
- removal of on-street parking on Estelle Street near the work area
- a slight diversion for pedestrians and cyclists will be in place around our work areas
- visual changes from tree removal and installation of barriers
- construction vehicles, machinery, equipment and workers in the area
- medium to high levels of noise, dust and vibration from machinery and equipment.

Managing impacts

We carefully manage our works in line with the project's strict environmental performance requirements, including:

- accessing our worksite via the freeway where possible to reduce construction vehicle movement in Estelle Street
- monitoring noise, dust and vibrations levels with real time monitoring technology
- traffic controllers and signage to help guide you through Estelle Street
- preventing dust and water runoff using street sweepers and water carts.



Keeping in touch

We'll be out talking to nearby residents about these works in more detail, including changes to traffic conditions, driveway access and how we'll be managing any local impacts. If you have any questions now, please contact the 24/7 Contact Centre on **1800 105 105**.

Schedule is subject to change. Visit bigbuild.vic.gov.au/works for schedule changes.

For more information call **1800 105 105** or visit the Project Information Centre at **284 Doncaster Road, Balwyn North**

bigbuild.vic.gov.au/roads

contact@bigbuild.vic.gov.au



1800 105 105 (call anytime)



For languages other than
English please call 9209 0147

Please contact us if you would like this information in an accessible format.

If you need assistance due to a hearing or speech impairment, please visit relayservice.gov.au