

Construction update



State Library Station

October 2025

Major construction of State Library Station is complete, with final works underway including fit out of the underground station and reinstatement of community space.

Works snapshot: October 2025

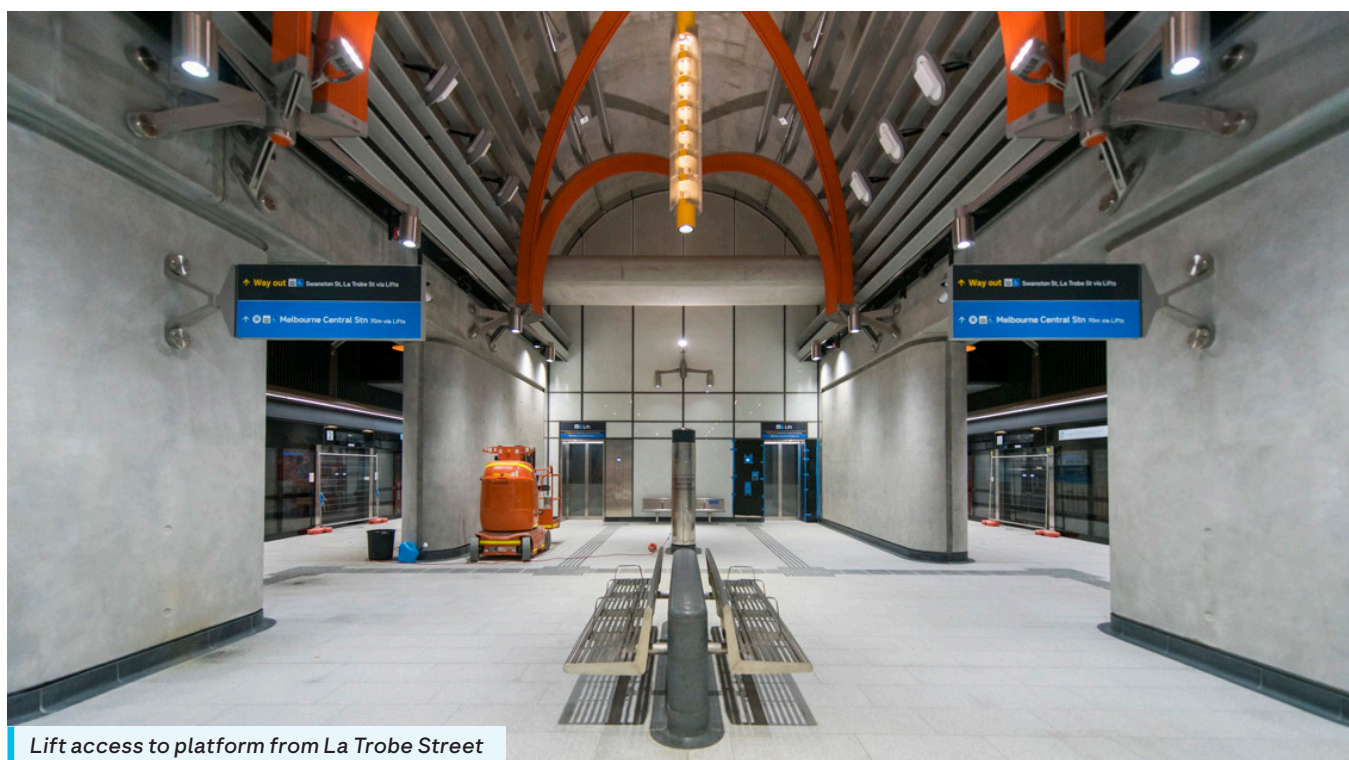
Major construction of State Library Station is complete, with final works continuing. During September, we reopened Franklin Street to the public, paving was completed along Swanston Street and in sections of A'Beckett Street, and we commenced works to rebuild A'Beckett Street into its final configuration.

Inside the station final fittings like glass balustrades are being installed and important systems like lifts and escalators are being switched on and tested.

Construction works within the State Library Station precinct over the next month include:

- Reinstatement works on Swanston Street during the night from late September
- Public realm works on A'Beckett Street including service installation, paving and asphaltting and reinstatement of the road.

Further information on these works can be found overleaf or at metrotunnel.vic.gov.au



Lift access to platform from La Trobe Street



Sign up for updates
Subscribe for email and SMS updates
at metrotunnel.vic.gov.au/subscribe

Construction partner:



Cross
Yarra
Partnership



When are we working?



Normal construction hours

7am to 6pm, Monday to Friday
7am to 1pm, Saturdays



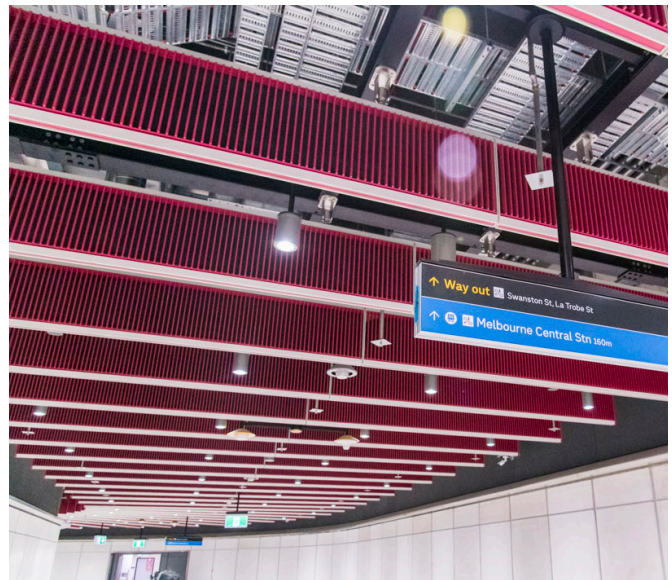
Out of hours

Some works are required to take place out of normal construction hours



24 hours

24 hour works are sometimes required during peak construction activities

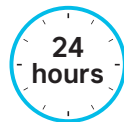


Passenger connection from La Trobe Street to the platform

Upcoming works in your area

La Trobe Street site

24-hours, Monday to Friday 7am to 12am,
Saturdays and Sundays 24 hours



- Fit-out of the station is nearing completion with works including floors, walls, cladding, lifts and escalators. This involves the use of cranes, elevated work platforms, scaffolding, forklifts, generators and other tools and equipment
- Intermittent partial closures of La Trobe Street northern footpath and the Swanston Street western footpath are required. Through access for pedestrians and access to businesses is being maintained (see map)
- Ventilation equipment operation will be required during works below ground, and site lighting will be required for night work.

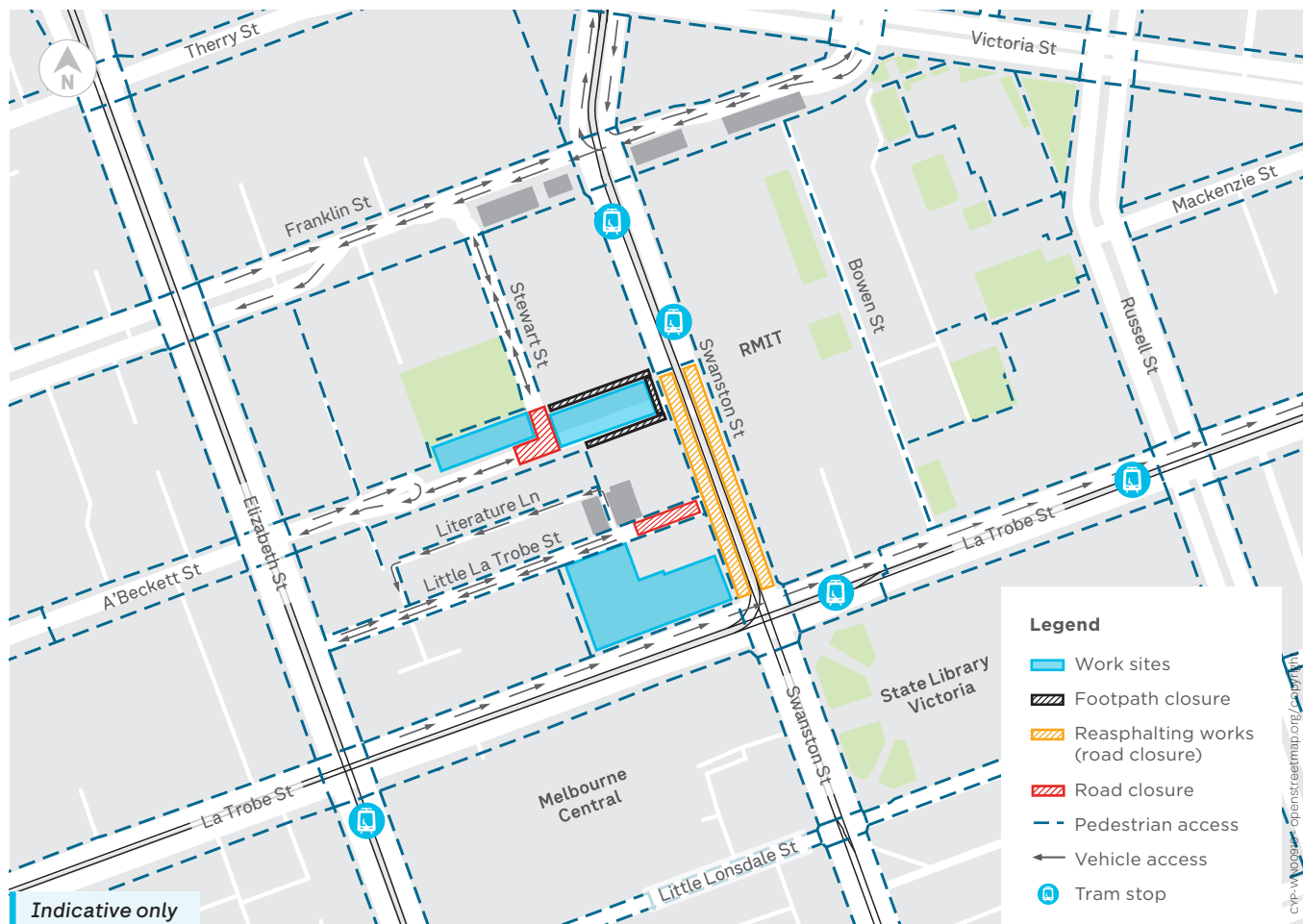
Little La Trobe Street site

7am to 3am, Monday to Friday 7am to 6pm,
Saturdays Out of hours



- Works continue on the station's service buildings, public realm and reinstatement works in Little La Trobe Street
- Public realm works are intermittent at Little La Trobe Street and can generate low to medium levels of noise
- Works include the use of hand tools including grinding and saw cutting
- Small satellite sites may be required with access to pedestrians maintained
- Partial closures of the northern footpath on Little La Trobe and Literature Lane at the east and west service buildings will be required to install signage, lighting and external cladding. Laneway access into A'Beckett Street will be maintained
- Deliveries to the La Trobe Street site will involve the use of trucks and a forklift on Little La Trobe Street. These deliveries will occur under the direction of traffic controllers.

Works area map



A'Beckett Street site

24-hours, Monday to Sundays, ongoing

Stewart Street road closures

24-hours, ongoing

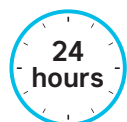
A'Beckett Street northern and southern footpath closure between Swanston and Stewart streets

24-hours, ongoing

Swanston Street western footpath closure at A'Beckett Street

24-hours, ongoing

- Public realm and reinstatement have commenced and requires the dual closure of the northern and southern footpaths between Swanston and Stewart streets. Pedestrian diversions are in place and access to businesses and residential buildings will be maintained via Elizabeth and Stewart streets
- Public realm and reinstatement works include the use of a jackhammer, excavator, saw cutting, vacuum trucks, concreting, paving, hand tools, road profiling, asphaltting and line marking and are expected to produce medium to high levels of noise
- A closure of A' Beckett Street is required to facilitate reinstatement works, local access will be maintained with access to A' Beckett Towers via Stewart and Franklin streets
- This work requires the temporary removal of parking bays on Swanston Street. Alternative loading and accessible parking bays are available in Little La Trobe Street



- The footpath closure will remain in place at the Swanston Street western footpath at A'Beckett Street on completion of these works to allow for site deliveries and for public realm and reinstatement work. A pedestrian diversion will be in place
- Intermittent closures of the RMIT basketball court footpath connecting Stewart and A'Beckett streets will be required at times
- During this footpath closure, a detour route will be available from 7am to 5pm through the RMIT basketball courts. Please note this detour includes stairs and an accessible pedestrian detour is available via Elizabeth Street
- Some works at the Swanston Street end of the A'Beckett site are required to take place when trams aren't running and will generate medium to high levels of noise. Please contact the project team if you have any concerns
- Pedestrian access to buildings will be maintained at all times.



A'Beckett Street reinstatement works

24 hours, Monday to Sunday
Early October to early November

- Works to remediate sections of the A'Beckett Street road surface between Elizabeth and Swanston Street are taking place
- These works will include profiling, asphaltting and line marking which may produce low to medium levels of noise and some vibrations
- These works will require some overnight closures of A'Beckett Street between Elizabeth and Swanston Street. Separate notification will be provided for these closures
- A'Beckett Street will remain open to vehicles during the day and pedestrian access to businesses and residential buildings will be maintained at all times.



Swanston Street reinstatement works

8pm to 6am, Monday to Thursdays
Tuesday 30 September to late October

- Major road works are required to reasphalt Swanston Street
- Swanston Street will be closed overnight between La Trobe and A'Beckett streets from 8pm to 5am, Monday to Thursdays to safely complete these works
- These works include profiling, asphaltting, kerb works and line marking which may produce medium to high levels of noise and some vibrations
- No vehicles will be able to access Swanston Street from La Trobe and Little La Trobe streets including for deliveries and waste collection

Franklin Street site

24-hours, Monday to Sunday, ongoing

Franklin Street northern and southern footpath closure between Stewart and Victoria street
As required, 24 hours Monday to Sunday, ongoing

Franklin Street bike lane closure
As required, Monday to Saturday

- Deliveries to Franklin Street are ongoing. Truck access to the Franklin Street West site is from Elizabeth and Swanston streets and deliveries to the Franklin Street East site are via Victoria Street. Stop and hold arrangements are in place
- Public realm and reinstatement work continue on the northern and southern footpath including between Elizabeth and Victoria streets. The works are taking place in stages, with access to business, residential and RMIT buildings maintained (see map).



Oversize deliveries

All sites

10pm to 7am, ongoing

- In addition to regular deliveries to site, out of hours deliveries will occur intermittently to minimise traffic disruption and ensure the safety of the public and our workers.



Groundwater monitoring

Victoria, Franklin, Swanston and Therry streets

Monday to Fridays, 7pm to 5am
under lane closure (as required)

- Intermittent testing of previously installed groundwater wells on Victoria, Franklin, Swanston and Therry streets on the road and footpath is ongoing
- This involves setting up small, localised traffic controls on footpaths and overnight lane closures with traffic management in place.



Over station development

A multi-level building will be built by Scape above State Library Station.

This development is not part of the Metro Tunnel Project.

For more information, visit
metro.tunnel.vic.gov.au/osd

Franklin Street improvements

Franklin Street between Elizabeth and Victoria streets has been improved as part of the Metro Tunnel Project. The street has been redesigned as a pedestrian promenade with a widened southern footpath and areas for seating, gardens and public art.

For more information, visit
bigbuild.vic.gov.au/library/metro-tunnel/franklin-street-fact-sheet



Future retail spaces within the State Library Station concourse area

Business support

While the new State Library Station will be a significant boost for the local area, construction activities can impact local businesses.

In response to this, our Business Support Team assists businesses through the disruption and any permanent changes that will take place.

Please see the promotion in this notification for **Captain Melville** located at **34 Franklin Street, Melbourne**.

We look forward to promoting more local businesses during the final months of the project.

Find out more

metrotunnel.vic.gov.au

1800 105 105 (call anytime)



For languages other than English
please call (03) 9209 0147



Please contact us if you would like this information in an accessible format. If you need assistance due to a hearing or speech impairment, visit relayservice.gov.au



Roads Open

PARTY



FOOD & LIQUOR
CPTN. Melville
EST. 1853

**SPECTACULAR
FOOD
DEALS**

**16th
OCT**

**ALL DAY
HAPPY
HOUR**

CAPTAIN MELVILLE

**34 FRANKLIN ST,
MELBOURNE CBD**