

The pedestrian overpass is lifted into place by an 800-tonne crane.

Issue #04, December 2025

Major milestones at Ballarat Station

BIG BUILD
RAIL

We're getting on with improving accessibility, safety and connectivity for all public transport users, while respecting the heritage of the station.

Our crews continue to achieve major project milestones in the Ballarat Station Upgrade.

Big deliveries

Two lift shafts, each measuring 10 metres tall and weighing 9 tonnes, were delivered to the project construction site in August this year, where our team completed the cladding, rendering and installing their electrical and mechanical components.

Next came the 28-metre-long steel frame for the pedestrian overpass. To avoid causing traffic disruptions, this massive load was trucked into site in the early morning hours, where it was fitted out before being put into place.

Bringing it all together during the 'Big Lift'

Ballarat Station's brand new pedestrian overpass and lifts were craned into their permanent positions using a massive 800-tonne crane during the 'Big Lift' that took place over a weekend in late November. The 'Big Lift' represented the most critical stage of the project.

The staircases that will take people up to the pedestrian overpass have also taken shape. The steel for the stairs was manufactured in Ballarat by local business Plinius Engineering. The stairs and balustrades have been installed in their permanent positions, and the roofing and cladding has been installed.

Now that all the key components are in position, our crews will install lighting, tiling, handrails and tactiles on the two staircases, and finish the internal fit-out and electrical works on the overpass. Glaziers will finish installing the glass in the lifts, lift shafts and the 'belvedere' balconies – the elevated viewing areas with glass screens in both lift landings.

The Ballarat Station Upgrade will be completed in April 2026.

Sign up for updates
at bigbuild.vic.gov.au/rail-subscribe





The steel overpass frame arrived at site in the early hours of the morning to minimise traffic disruptions.

Pedestrian overpass steels the show

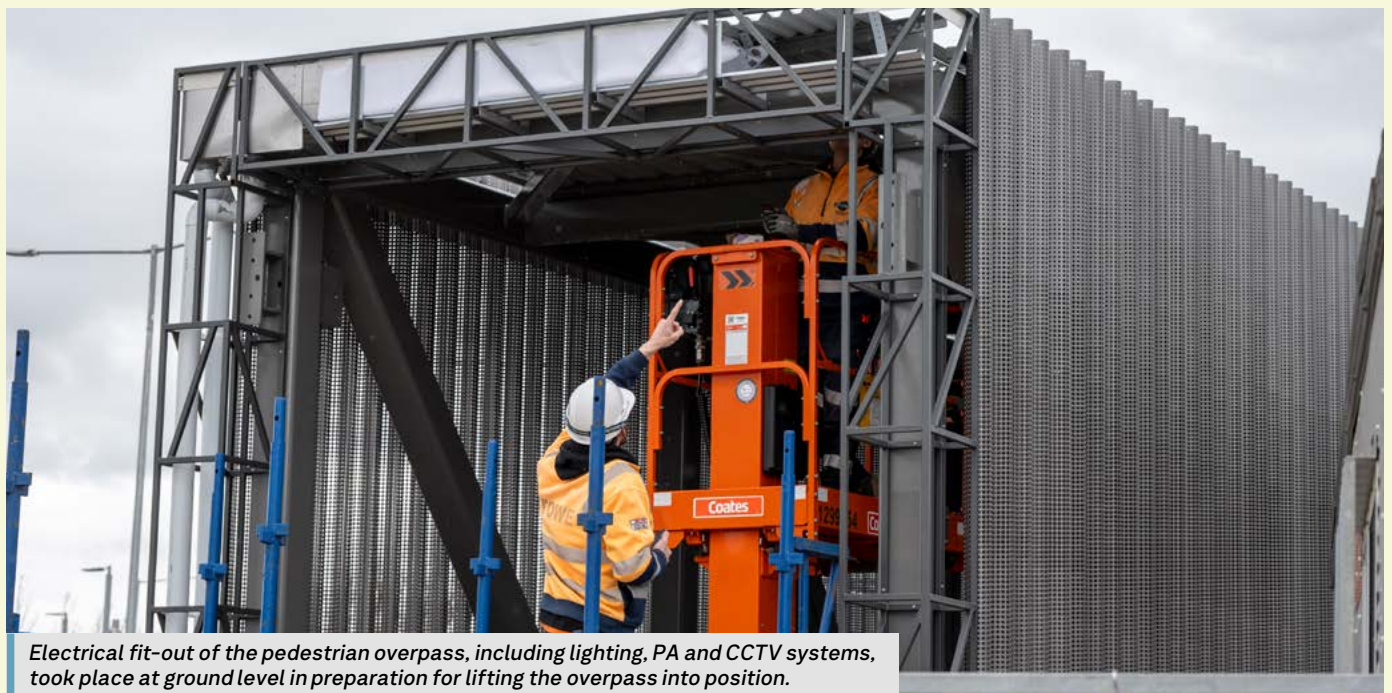
The 28m long steel frame was delivered to Ballarat Station following a journey across Bass Strait from Tasmania, where it was made by a company that specialises in bridge manufacturing.

The 34-tonne structure was lifted into position over the rail line in late November, following fit-out works on site.

The fit-out included electrical and drainage components, roofing and affixing aluminium cladding. This specialised cladding features a series of curves to reflect the heritage ironwork around the platform canopies. The silver-grey cladding also features a unique pattern of perforations designed to enable transparency and good visibility for station users, while also providing weather protection.

Once the on-ground fit-out was complete, an 800-tonne crane was used to lift the 65-tonne structure into place over the rail line.

The overpass will allow people to safely cross the rail line without needing to leave the station, and is wide enough to allow two wheelchairs, or mobility scooters to pass each other comfortably.



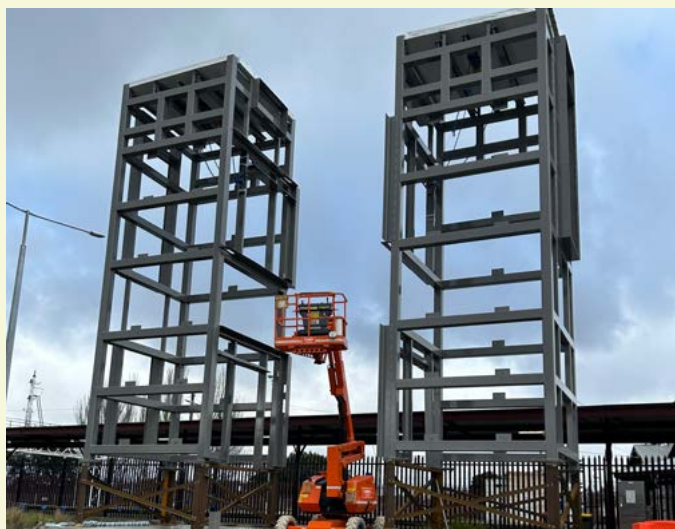
Electrical fit-out of the pedestrian overpass, including lighting, PA and CCTV systems, took place at ground level in preparation for lifting the overpass into position.

Lifts taking shape

The lifts arrived on site as two steel frames weighing 9 tonnes each. Then it was time for extensive fit-out works to prepare them for their permanent home.

Our crews have installed insulation and external cladding that has been rendered with fibre cement as well as a high quality, weather-resistant finish. Lift specialists then installed the motors, electrical components and lift cars.

When they were craned into their final positions on each side of the rail line at the end of November, they each weighed in at 35 tonnes.



The steel lift frames were delivered to site in August for fit-out.



Lift fit-out works underway on the ground before the 'Big Lift'.



The northern entrance accessibility upgrade is now complete.

Accessibility and inclusive travel at Ballarat Station

Important upgrade to the northern station entrance complete

Ballarat Station's main entrance on the northern side is now fully accessible. Our crews built a new ramp and stairs and installed handrails and automatic swing doors.

The area has also been planted with hardy native plants that will continue to grow and provide an inviting backdrop for the main station entrance.

The landscaping work was done by a small team from McCallum Enterprises, a western Victorian social enterprise that employs people with disability.

These upgrades make it easier and safer for all commuters to use the northern station entrance, which connects to other transport options and the multi-deck commuter car park.

Introducing Travellers Aid

Travellers Aid is a not-for-profit social enterprise that's all about making travel more inclusive, safe, and dignified – especially for people with disabilities, mobility, cognitive or sensory challenges, or older adults who might need some help navigating public transport.

Ballarat Station is one of four regional hubs for this Victorian organisation which, in partnership with V/Line, offers free assistance on weekdays between 7.30am and 3.30pm. Visit travellersaid.org.au to find out more.



*Rachel, Assistant Manager
– Operations, Travellers Aid.*

Meet Rachel from Ballarat Travellers Aid

Tell us a bit about yourself Rachel.

I've called Ballarat home since 1991, when I first arrived to begin my university studies. Over the years, I've built a career in the natural environmental sector and community services, and for the past 18 months, I've had the privilege of working with Travellers Aid. In my current role, I oversee both metropolitan and regional services, based at Ballarat Station.

I'm the parent of four adult children—all living locally in Ballarat—and awaiting the arrival of my first grandchild.

What impact does Travellers Aid have at Ballarat Station?

I'm especially proud of the practical impact our team has on accessibility. Our dedicated volunteers work closely with V/Line staff to support travellers,

whether it's helping them make safe connections or being greeted by family and friends at the station.

We understand that travel can sometimes feel daunting, and we aim to ease that experience through services like luggage assistance, personal guidance and wheelchair aid.

What do you love about your job?

I'm continually inspired by the meaningful work our team delivers every day.

One of the most rewarding aspects of my role is connecting with individuals who've engaged with our Try Before You Ride initiatives, attended community talks, or visited us at local expos. These moments remind me of the importance of inclusive travel and the power of community.



*Ballarat Station Upgrade Project
Manager talking about our works.*

Try Before You Ride at Ballarat Station

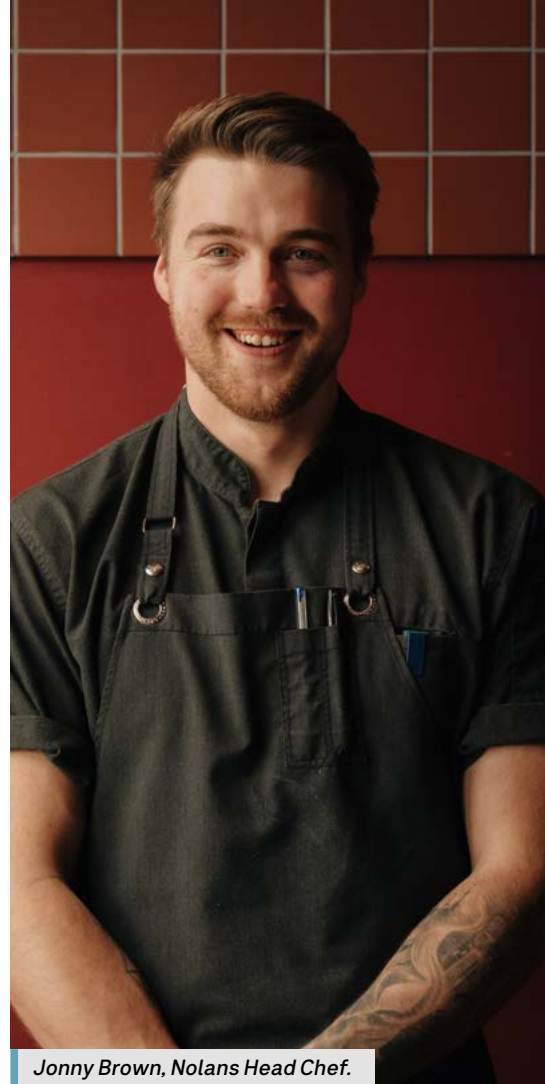
We took part in a Try Before You Ride session at Ballarat Station. Organised by V/Line and the City of Ballarat, the program supports people living with disability, chronic health conditions, and accessibility requirements to build their confidence when using public transport.

We showed the group around our project areas to provide insights into the accessibility improvements the Ballarat Station Upgrade project will deliver. Participants also learned about transport options at the station, including during service disruptions on the V/Line network.

Following the formal station tour, we had an informal coffee and Q+A session at the Station Refreshment Room where the discussion with the group continued.



Nolans, The Goods Shed, Ballarat.



Jonny Brown, Nolans Head Chef.

Meet Jonny Brown, Head Chef at Nolans, The Goods Shed

Nolans is housed in the iconic bluestone Goods Shed building in the Ballarat Station precinct. Built in 1863, it was once a busy railway goods depot. The building has been restored to create a modern dining space that celebrates the city's heritage and the region's produce.

The restoration process has preserved features of the original Goods Shed structure. From the old rail lines still visible in the flooring, to the weathered stone walls, there are stories built into every corner. Since opening in November 2023, the Nolans team have enjoyed giving guests a modern dining experience in a space that's seen over 160 years of Ballarat history.

Jonny's menu favours food for sharing, bringing people together around the table over hearty, Italian-inspired dishes made with quality ingredients, such as generous plates of pasta, woodfired pizzas, and seasonal sides.

Jonny loves seeing Ballarat locals enjoying crisp, golden polenta fries shared over a drink, and he claims the rich, slow-cooked veal pappardelle and classic tiramisu are hard to resist.

Local producers help to showcase the best of the region with suppliers such as Loddon Valley Lamb, The Mushroom Connection, Salt Kitchen Charcuterie, Inglenook Dairy, and many more taking their place on the menu since Nolans opened. For Jonny, sourcing locally means dishes are full of flavour while helping him and the team stay connected to the community they're proud to be part of.

Leading the kitchen at Nolans gives Jonny the chance to experiment, refine dishes, and work with a talented team. He is driven by seeing the joy created when people come together through food, while also enjoying being part of Ballarat's vibrant and evolving food scene.



The pedestrian overpass in position over the rail line.

Project timeline



2023

Site investigations and planning works



Mid 2024

Concept designs released

Community engagement



Late 2024

Final designs released

Further community engagement



2025

Major construction



April 2026

Pedestrian overpass opens

Construction complete

** Timeline subject to change.*

Works update

We want to thank the community of Ballarat and beyond for their patience while we carried out the 'Big Lift', during a full station closure from Friday 21 to Monday 24 November 2025.

Now that the main components of the Ballarat Station Upgrade are in place, there is still plenty to do to get it ready for opening to the public in April 2026.

Finishing works will now take place to complete:

- pedestrian overpass drainage, electrical, CCTV, signage and handrails
- staircase handrails, tiling, lighting and signage
- lift car window glazing and fit-out, electrical, and CCTV
- landscaping, signage and lighting
- reinstatement of the bus interchange in the Ballarat Station precinct.



Read our works notifications to stay up to date with the latest project information.

Scan the QR code or visit **bigbuild.vic.gov.au/ballarat-station-upgrade**

bigbuild.vic.gov.au/bigbuildrail



For languages other than English please call 9209 0147

1800 105 105 (call anytime)
railprojects@bigbuild.vic.gov.au



Please contact us if you would like this information in an accessible format. If you need assistance due to a hearing or speech impairment, visit **relayservice.gov.au**