



New Albion Station featuring a new, accessible pedestrian overpass, lifts and stairs. Artist's impression – subject to change.

West Footscray to Albion Rail Upgrade

Issue 04 May 2026



Early designs released for Tottenham and Albion stations

We are building new modern and accessible stations at Tottenham and Albion as part of the Melbourne Airport Rail Stage 1: West Footscray to Albion Rail Upgrade, delivering more trains, more often for passengers across Victoria's west.

The new Tottenham and Albion stations will be delivered as part of works spanning more than **6km** between West Footscray and Albion, which will untangle Melbourne's most complex rail junction outside the CBD, and unlock capacity for **1000 daily train services** through Sunshine.

The more than \$4 billion joint investment by the Australian and Victorian governments removes the bottleneck at Sunshine to make space for dedicated tracks and platforms for airport and electrified Melton trains.



Have your say

If you would like to meet with us, scan the QR code to find out times and locations.

Refer to back page for more information about other ways to get involved.

Project benefits



6km of new and upgraded rail tracks and signalling from West Footscray to Albion



Creates capacity for 1000 daily services through Sunshine



Untangles the rail network as the critical first stage for Airport Rail and Melton electrification



Transforming Sunshine Station into a transport superhub including two new platforms and updated bus interchange



New stations at Albion and Tottenham



Sign up for updates
airportrail.vic.gov.au/subscribe

VICTORIA'S BIG BUILD

A brand-new Albion Station

A new modern and accessible Albion Station will feature a pedestrian overpass that will make it easier and safer to catch the train and cross the rail line.

Funded by the Victorian Government, the new station will provide an important boost to the local area.

A welcoming entrance to the station will feature an overpass with lifts and stairs, and a new station plaza with new seating, bike hoops and landscaping.

The new centrally located pedestrian overpass will make

the journey across the rail line easier and safer for all commuters, including people with disability, and those who may use a mobility aid, luggage, or a pram.

Transparent surfaces will also improve visibility and safety.

New pedestrian paths connect to Sydney Street and to the bus bays on Ballarat Road Service Road, as well as Talmage/Ferguson Street.

The existing underpass will remain to provide a convenient way for locals to safely cross the rail line.

Stairs and lifts on both sides of the rail line will provide access to the new overpass, with stairs and another lift connecting passengers from the overpass to the central platform.

Station features



Welcoming, landscaped entry plaza that complements the surrounding precinct



New accessible pedestrian overpass



Two lifts to the overpass plus one lift to the station platform

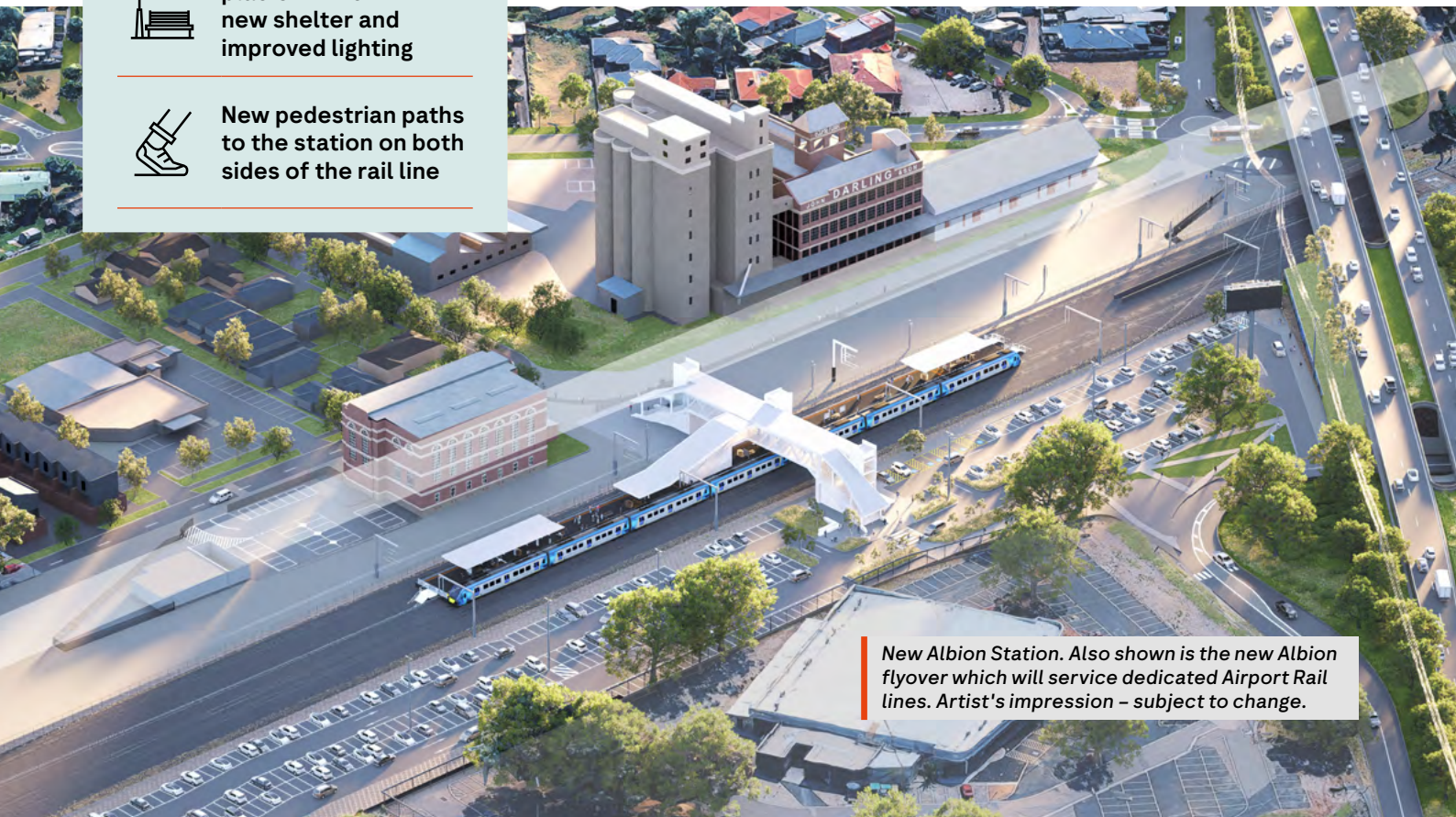


New accessible platform with new shelter and improved lighting



New pedestrian paths to the station on both sides of the rail line

The new Albion Station pedestrian overpass and platform. Artist's impression – subject to change.



New Albion Station. Also shown is the new Albion flyover which will service dedicated Airport Rail lines. Artist's impression – subject to change.



Entrance to the new Tottenham Station underpass from Rupert Street. Artist's impression – subject to change.

Station features



Additional platform shelters and lighting



New underpass from Rupert Street to Sunshine Road



Lifts and stairs to access the platforms



Easier and safer connections to the station and activity centres on both sides of the rail lines

Your new Tottenham Station

As part of the West Footscray to Albion Rail Upgrade, we're building a new modern and accessible Tottenham Station.

Access to the new station will be improved with a new underpass, separated from Ashley Street.

The new underpass from Rupert Street to Sunshine Road will provide easier and safer connections to the station from both sides of the busy rail lines.

With improved convenience, passengers will be able to park in the Rupert Street or Sunshine

Road car parks and walk through the new underpass, which will include lifts and stairs connecting to the central platform above.

The new station will be located about 20 metres north and 60 metres west of the station's current position, so it continues to service the Sunbury Line, with trains running through to the Metro Tunnel.

Project timeline

Melbourne Airport Rail Stage 1: West Footscray to Albion Rail Upgrade



2025

- Project announced
- Site investigations



2026

- Concept designs for Sunshine Superhub released
- Major construction begins
- Concept designs released for the new Albion and Tottenham stations



2027

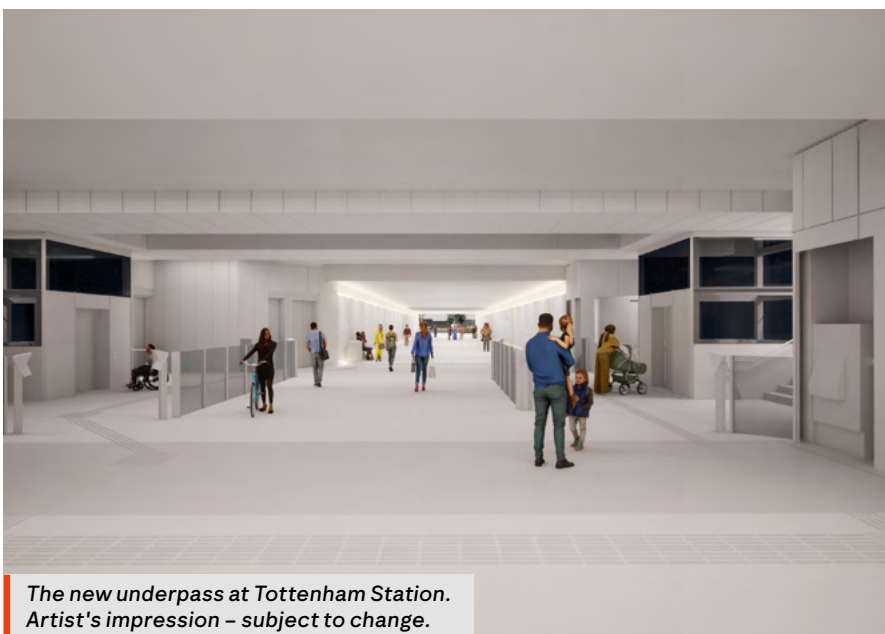
- Updated designs for Sunshine Superhub released
- Final designs for Albion Station released
- Final designs for Tottenham Station released



2030

- West Footscray to Albion Rail Upgrade complete

* Timeline subject to change.



The new underpass at Tottenham Station. Artist's impression – subject to change.

Help shape the new Albion and Tottenham stations

New designs for Albion and Tottenham Stations

We want your feedback on the early designs for Albion and Tottenham stations to help shape the final designs.

Have your say



take our surveys

Scan the QR code or visit engage.vic.gov.au/airportrail-stage1 by 11.59pm, Sunday 14 June.

If you would like a hard copy survey sent to you, please call us on 1800 105 105 or email airportrail@bigbuild.vic.gov.au



Hãy đóng góp ý kiến của quý vị

Quét mã QR hoặc truy cập engage.vic.gov.au/airportrail-stage1 trước 23:59, Chủ nhật ngày 14 tháng 6.

Nếu quý vị muốn nhận bản khảo sát giấy, vui lòng gọi 1800 105 105 hoặc gửi email đến airportrail@bigbuild.vic.gov.au



發表你的意見

請在 6 月 14 日 (星期日) 晚上 11 時 59 分前掃描二維碼或瀏覽 engage.vic.gov.au/airportrail-stage1。

如需紙本問卷，請致電 1800 105 105 或電郵至 airportrail@bigbuild.vic.gov.au 索取

Sunshine Superhub Project planning consultation

We are consulting you on the amended Sunshine Superhub Project, which includes the new Tottenham Station, an expansion of the Project boundary and additional ancillary works.

These works will proceed under Clause 52.03 of the Brimbank, Maribyrnong and Hobsons Bay planning schemes.

We're seeking community input on a range of planning matters, including:

- amended project boundary
- environmental management
- heritage impacts
- tree and vegetation removal
- amenity
- traffic and access
- construction-related impacts.

In addition to these planning matters, we welcome submissions related to any aspect of the project. Scan the QR code to make a submission.

All feedback will inform the Minister for Planning's assessment of the further works and change to the project boundary.

Separate planning consultation for Albion Station will take place later this year.



Entrance to new underpass at Tottenham Station from Sunshine Road. Artist's impression – subject to change.

airportrail.vic.gov.au
airportrail@bigbuild.vic.gov.au

1800 105 105 (call anytime)



For languages other than English please call 9209 0147

Please contact us if you would like this information in an accessible format. If you need assistance due to a hearing or speech impairment, visit relayservice.gov.au

