



## EASTERN PORTAL COMMUNITY REFERENCE GROUP

---

Meeting #5

Tuesday 3 July 2018



# RAIL INFRASTRUCTURE ALLIANCE

UPDATE



# RIA PROCUREMENT UPDATE

## **Preferred RIA contractor to be announced in July:**

- RPV and preferred RIA contractor will then work together to finalise the contract over the coming months
  - Opportunities for community engagement (CRG and Pop-up Sessions)
- 
- Contract award in third quarter 2018

# RIA: EASTERN PORTAL GENERAL UPDATE

## Portal entrance construction to be delivered by RIA:

- Cut-and-cover tunnel
  - Decline structure
  - Retaining walls
  - Modification of track and railway assets
  - Urban realm improvements
- Ahead of major works, a range of early works are required by the RIA contractor to prepare the site and enable occupations in early 2019
  - Early works are scheduled to commence in **September 2018**, subject to RIA contract award and approval of early works plan



# RIA: EARLY WORKS PLAN

## Have your say:

- Draft RIA Early Works Plan available for public inspection and comment from - **Monday 16 July to Friday 3 August 2018**
- Local drop-in information sessions during public display period
- Online submission form at **[metro.tunnel.vic.gov.au/planning](http://metro.tunnel.vic.gov.au/planning)**
- Feedback received on the draft plan will be considered as part of its finalisation
- Updated plan provided to Minister for Planning for approval.



# PROPOSED RIA EARLY WORKS SCOPE

- Installation of site hoardings
- Demolitions of existing properties
- Earthworks
- Piling and foundation works
- Site offices and laydown area
- Utility relocation and protection
- Tree and vegetation removal
- Local traffic changes



# QUESTIONS



# CROSS YARRA PARTNERSHIP

WORKS UPDATE

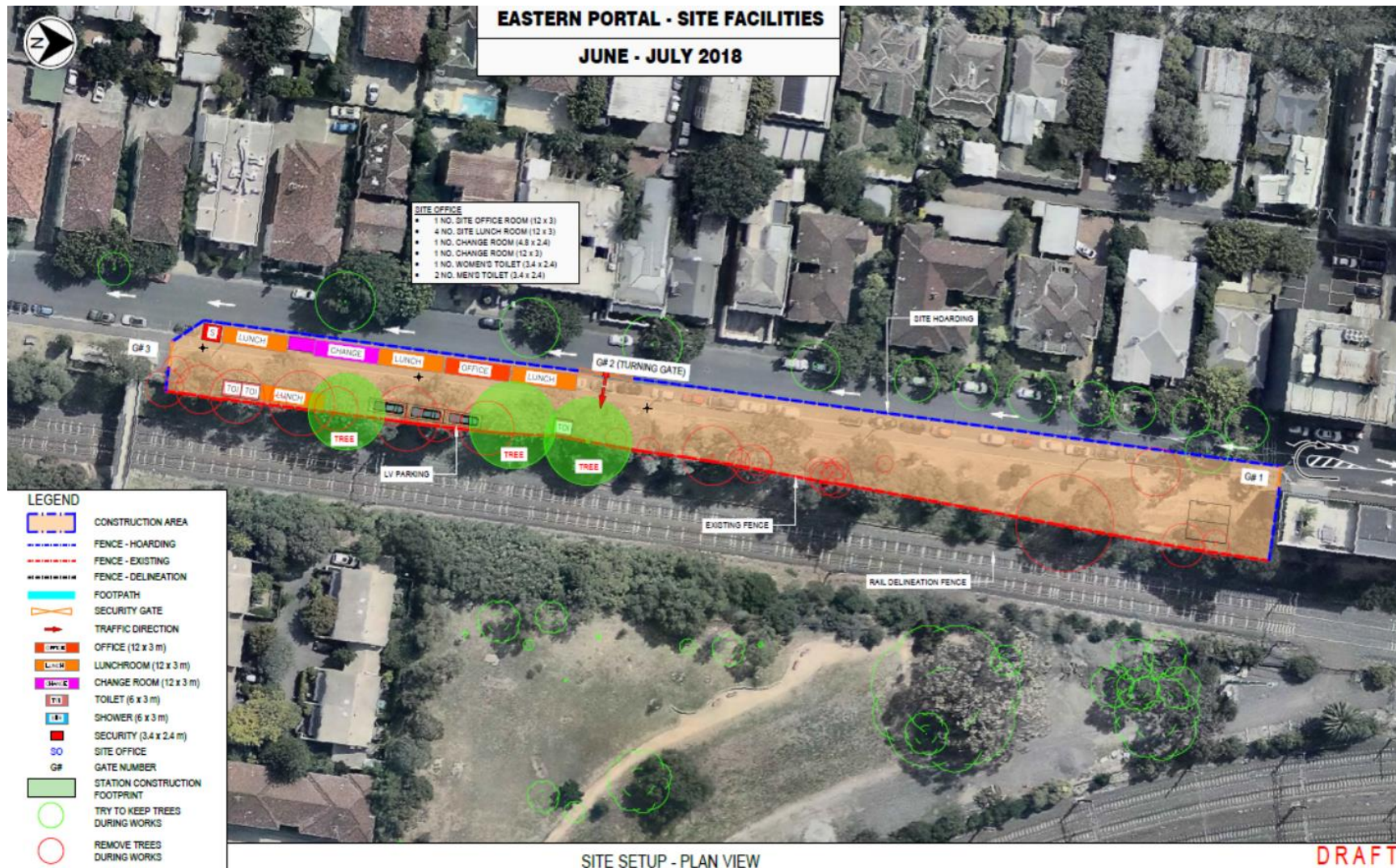


# NEW TRAFFIC ARRANGEMENTS



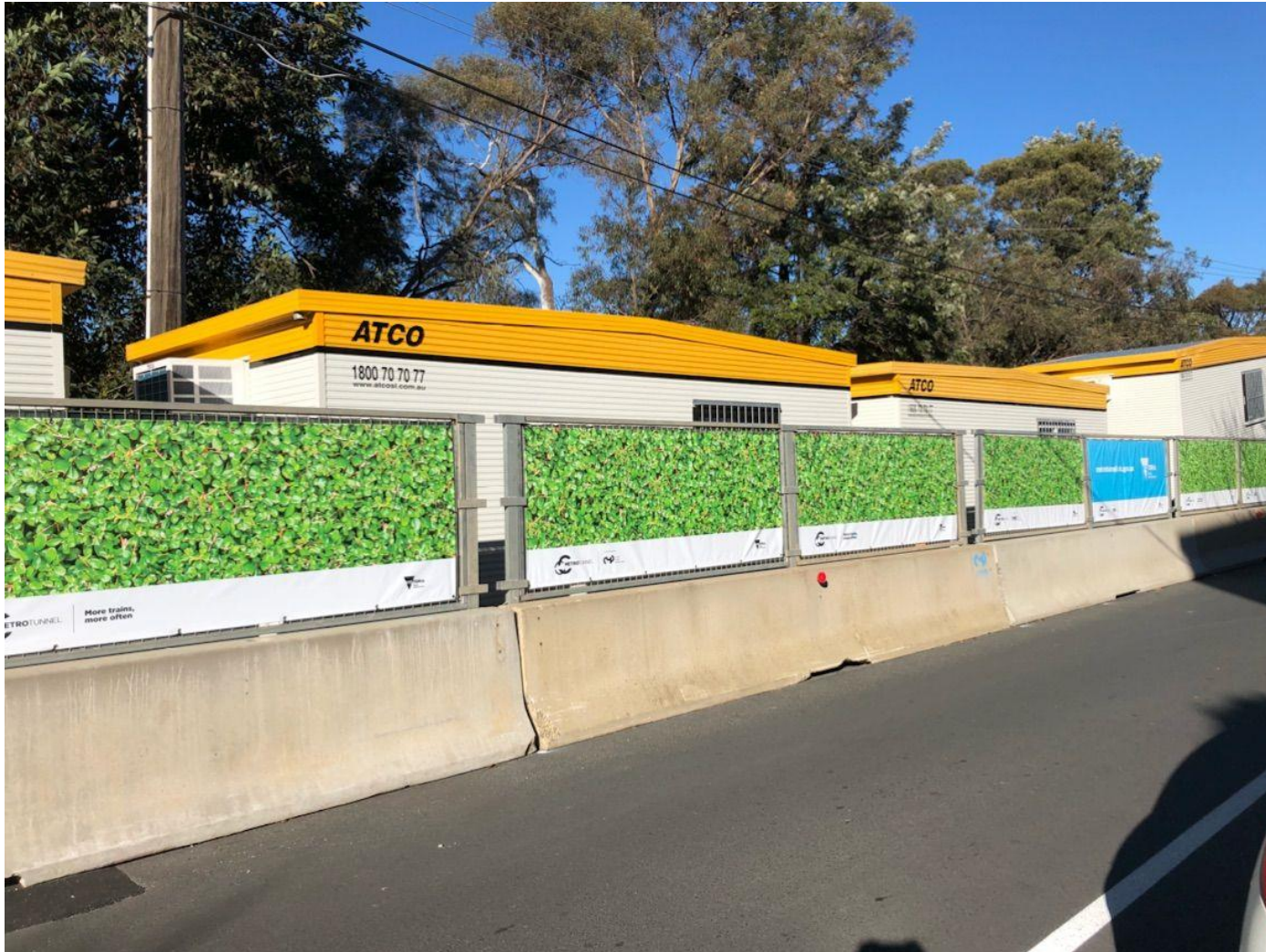


# SITE ESTABLISHMENT





# SITE ESTABLISHMENT





# SITE ESTABLISHMENT





# SITE ESTABLISHMENT



# SITE ESTABLISHMENT



# UPCOMING WORKS – JUNE TO AUGUST 2018

## **Daytime works (7am-6pm Monday-Friday & 7am-1pm Saturday)**

- Site facilities installation, including installation of site offices and modification to footpaths and asphalt
- Tree removal
- Fencing installation

## **Weekend Rail Occupations**

10pm Friday 6 July to 3am Monday 9 July (10pm to 3am)

10pm Friday 13 July to 3am Monday 16 July (10pm to 3am)

10pm Friday 24 August to 3am Monday 27 August (10pm to 3am)

- Tree removal
- Service relocation
- Rail fence installation



# EASTERN PORTAL TIMELINE

Activity	Timeframe
Site Establishment	Underway
Main works commence	July 2018
Shaft construction commences (including excavation)	Mid 2018-Mid-2019
Tunnel Boring Machine Extraction	2020
Structure Completed	2021
Tunnel fit out and rail completed	2021
Testing and Commissioning complete	2025



# NOISE MODELLING

Metro Tunnel Project – Tunnel and Stations PPP Package  
Construction Noise and Vibration Impact Assessment – Eastern Fortal Precinct



Figure 5: Background noise monitoring locations and nearby residential areas

# NOISE MODELLING

Group	Activities	Zone 1	Zone 2	Zone 3	Zone 4
Early Works (Day Time)	Fencing Installation	58-77 dB	45-65 dB	57-62 dB	60-69 dB
	Site Establishment	60-84 dB	43-68 dB	60-61 dB	59-66 dB
	Tree Removal	65-85 dB	48-72 dB	66-68 dB	66-74 dB
July occupation (Night Works)	Service Relocation	45-70 dB	42-56 dB	48-58 dB	61-69 dB



# NOISE MODELLING

## **Construction Noise & Vibration Impact Assessment**

Completed using the following inputs:

- Topography
- Building structures
- Noise sources
- Noise sensitive receivers
- Ground and air absorption

# NOISE MODELLING

## Construction Noise & Vibration Impact Assessment

### Key points:

- For each modelled scenario, it is assumed that all equipment will operate simultaneously. This represents a 'worst-case' scenario with no mitigation.
- Noise mitigation methods:
  - Fencing
  - Noise attenuation/blankets at the source (site of the machinery)
  - Scheduling noisy works prior to 10pm wherever possible during the weekend occupations
  - Consideration of equipment and plant selected
  - Location of stationary noise sources
  - Planning traffic flow and loading/unloading to minimize reversing movements
  - Broadband reversing alarms
- Will set up monitoring to check noise levels against modelling

# TREE REMOVAL

- Tree removal will commence early July 2018 and will continue through the weekend occupations in July
- Juvenile trees are being assessed for relocation





# SUPPORT FOR LOCAL BUSINESSES





**QUESTIONS?**



# METRO TUNNEL CREATIVE PROGRAM

UPDATE





# CREATIVE PROGRAM

## OBJECTIVES

- Keep the city vibrant and moving
- Think laterally about space and place
- Remain quintessentially 'Melbourne' in our approach
- Stay true to local character
- Keep the city's areas active
- Keep Melbourne liveable

## KEY POINTS

- Focus is on the edge of construction
- Scope of the program is the scope of the project
- Primary stakeholder is the community experiencing disruption
- Disruption brings opportunity
- Unique opportunity for the city to showcase arts and events
- Robust measuring and reporting will shape future program



# OUTCOME FROM TODAY

- Collaborate on a way forward to involve the community of Osborne St and its surrounds on developing an artistic treatment for the Metro Tunnel hoardings
- Work on a timeframe for delivery and approvals required for designs



# THREE CONCEPT DESIGNS

- Metro Tunnel will invite three local artists / designers to come up with individual concept designs for the hoardings
- Community will be consulted on which concept they like best
- Most preferred will be submitted to the Metro Tunnel Creative Program Steering Committee for approval
- Subject to approval, the design will be implemented



# KEY POINTS

- Metro Tunnel Creative Program Steering Committee will also have final decision making, however design preference from CRG will be taken into account
- Metro Tunnel Creative Program will work with the community and the artist to take advantage of any recycling opportunity for the artworks once the hoardings are removed



# TIMEFRAMES

- **28 August:** MTCP presentation to CRG of draft concept designs for selection / feedback
- **TBC:** Community consultation on concept designs
- **23 October:** presentation of final design after any feedback and MTCP Steering Committee Sign off
- **4 Dec:** update on installation (ideally will have occurred by this point but this will depend on approvals)

# Metro Trains – Upcoming rail disruptions

Clare Robertson  
Senior Communications and Stakeholder Relations Manager  
Metro Tunnel Project

3 July 2018

Commercial in confidence



# Overview

Critical works for the Metro Tunnel Project will be carried out at the locations of the tunnel entrances in Kensington and South Yarra over two weekends in July.

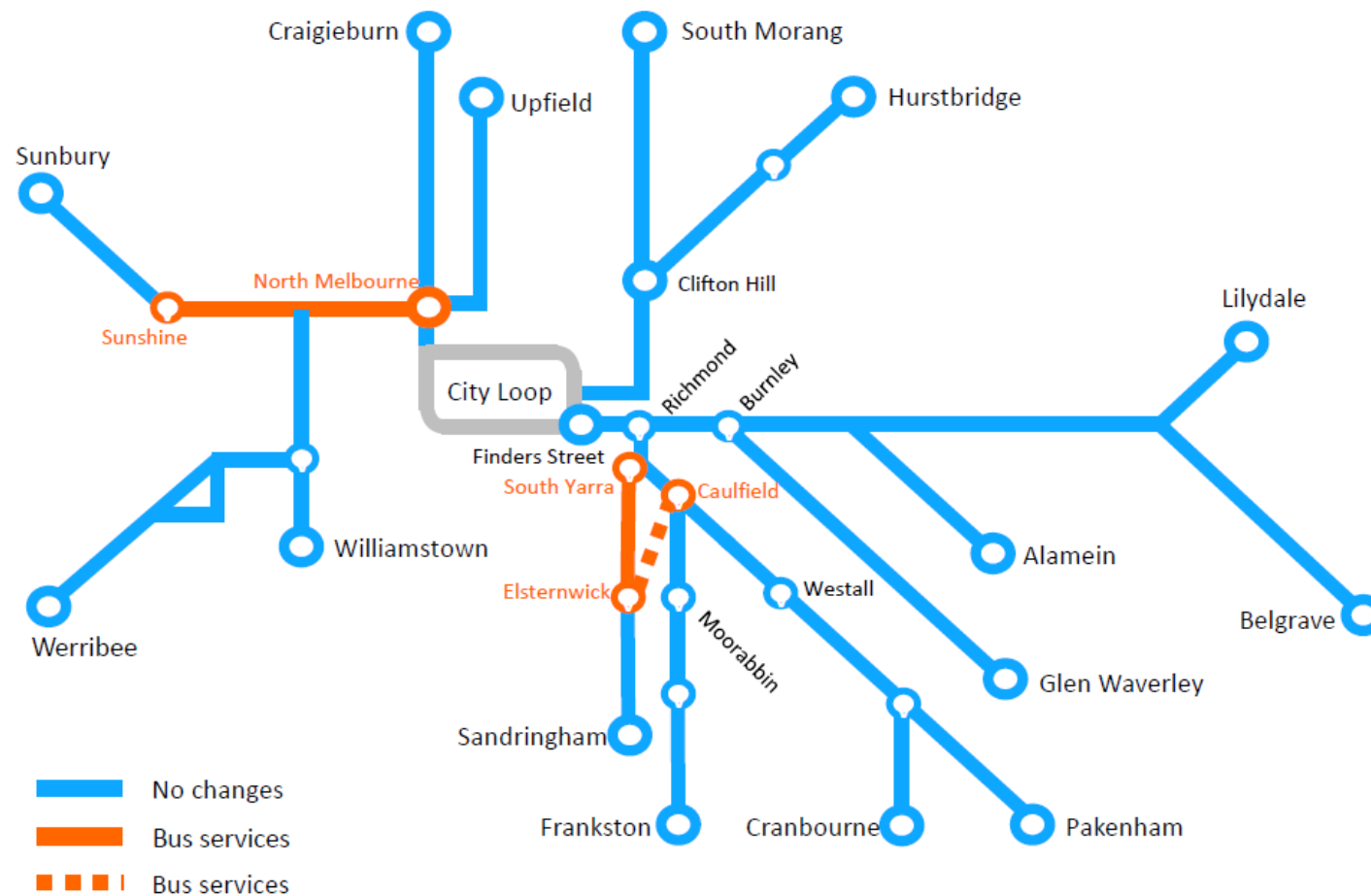
These are the first rail disruptions to be carried out as part of the Metro Tunnel Project.

We recommend passengers allow 30 minutes extra for their travel journey.

	Dates	Buses will replace trains between
<b>Sunbury line</b>	<ul style="list-style-type: none"><li>8.30pm Fri 6 July to last service Sun 8 July</li><li>8.30pm Fri 13 July to last service Sun 15 July</li></ul>	North Melbourne Station to Sunshine Station
<b>Sandringham line</b>	<ul style="list-style-type: none"><li>8.30pm Fri 6 July to last service Sun 8 July</li><li>8.30pm Fri 13 July to last service Sun 15 July</li></ul>	South Yarra Station to Elsternwick Station



# Running train replacement bus services





# Communications and engagement

Key communications and engagement activities for these early start weekend occupations include:

- Posters at stations, including timetable posters and decals
- Metro Travel Update advertisements in metropolitan papers
- Brochures
- Surprise and delight – fruit, giveaways, water, local trade produce etc. during disruption
- Station and on-board announcements
- Stakeholder emails / face-to-face engagement
- Online and social media content
- Resident and trader notifications where on-street parking is impacted.



# Likely impacts – around South Yarra and Windsor stations

To safely run train replacement bus services, residents and traders around South Yarra and Windsor stations may notice:

- Temporary closures of on-street car parking (less than five parking bays in each location)
- Temporary changes to taxi rank on Toorak Road
- Low-level noise generated from buses and pedestrian traffic
- Use of portable microphones (i.e. PAs), lighting towers and temporary power generators
- Some traffic management to guide local drivers and buses around the station precinct, and support passenger safety at drop-off and pick-up areas.

