



STATE LIBRARY STATION COMMUNITY REFERENCE GROUP

CROSS YARRA PARTNERSHIP
FRIDAY 31 JANUARY 2020





STATE LIBRARY STATION COMMUNITY REFERENCE GROUP

Melinda Kelly, State Library Station Stakeholder Engagement Manager, CYP D&C



AGENDA

1. Project overview
2. State Library Station update
3. Feedback and action items

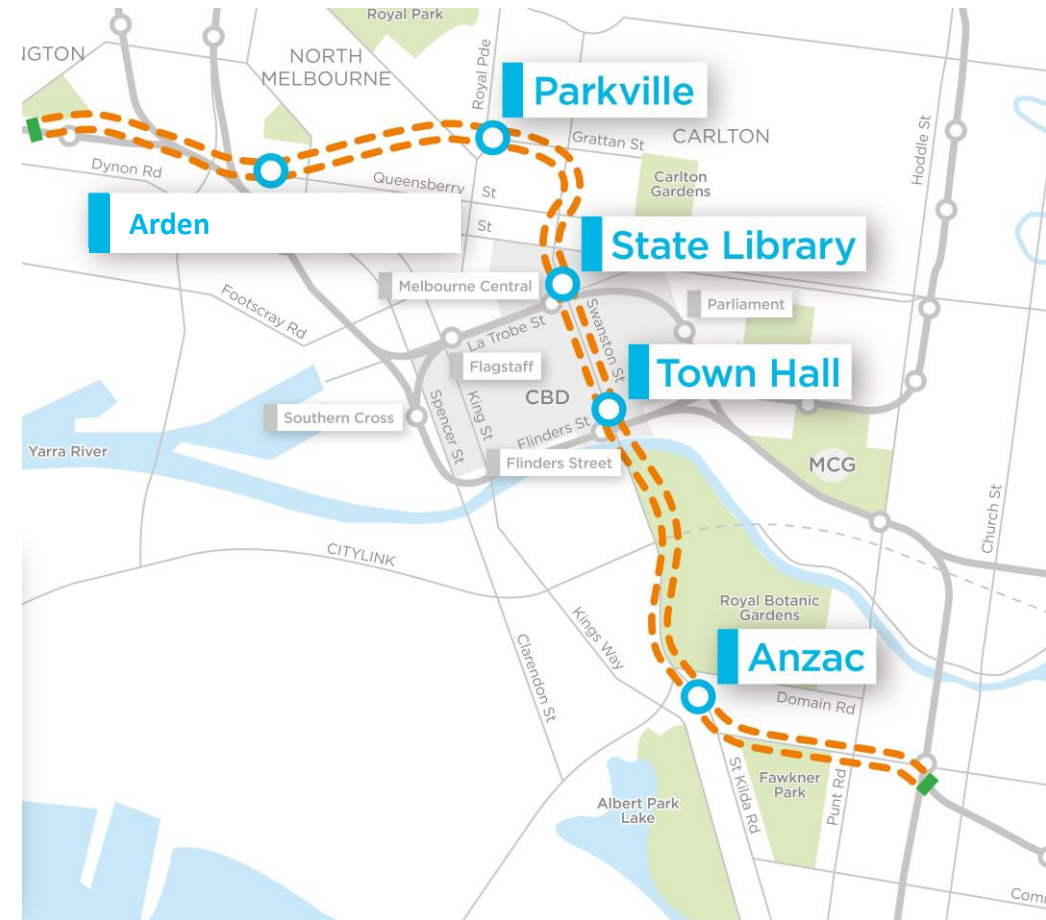
PROJECT OVERVIEW



TUNNELS AND STATIONS SCOPE

Design and construct:

- Twin nine kilometre tunnels from South Yarra to Kensington
- Five new underground stations
 - Anzac
 - Town Hall
 - **State Library**
 - Parkville
 - Arden.



The Metro Tunnel will create a new end-to-end rail line from Sunbury to Cranbourne/Pakenham

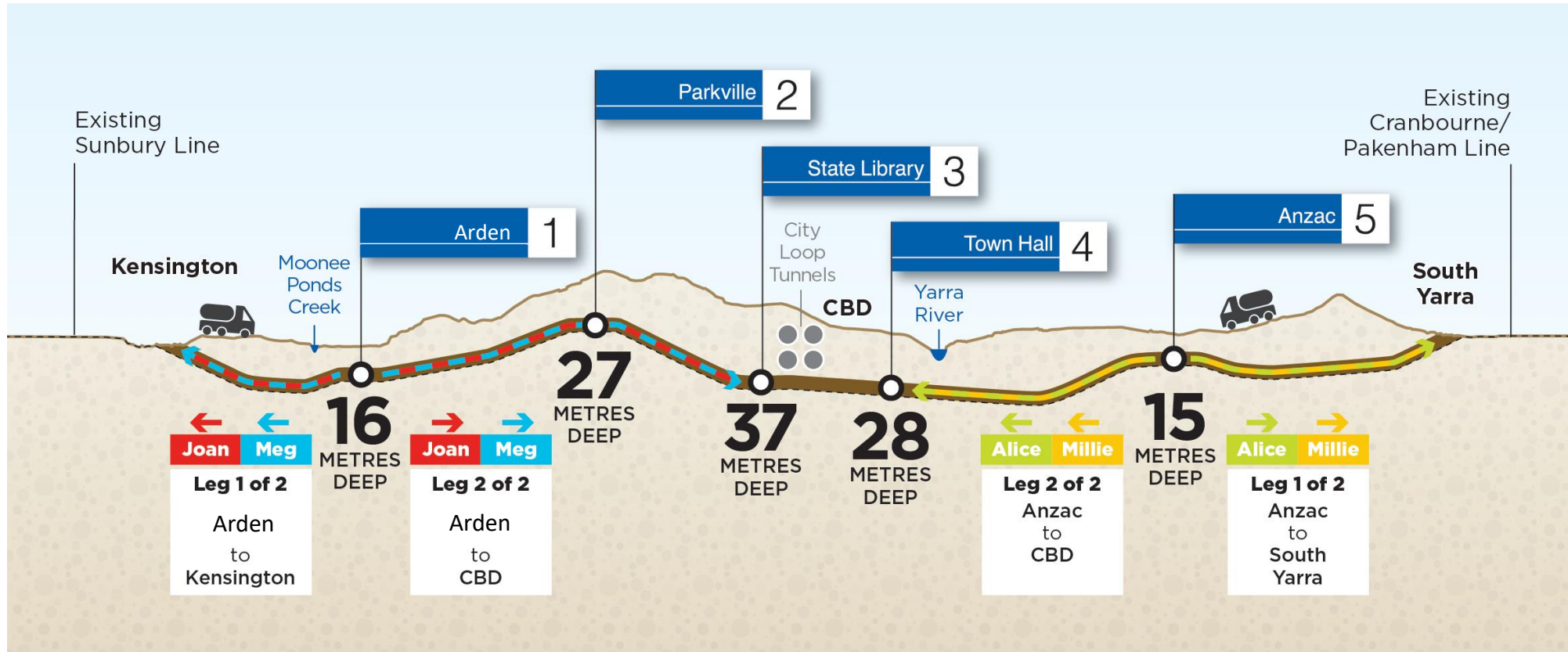
STATE LIBRARY STATION



- Seven roadheaders will be used to construct the two CBD stations
- They move on average 1-2 metres per day
- Weighing 118-tonnes, and measuring 15-metres long
- They cut through rock three times the strength of concrete.

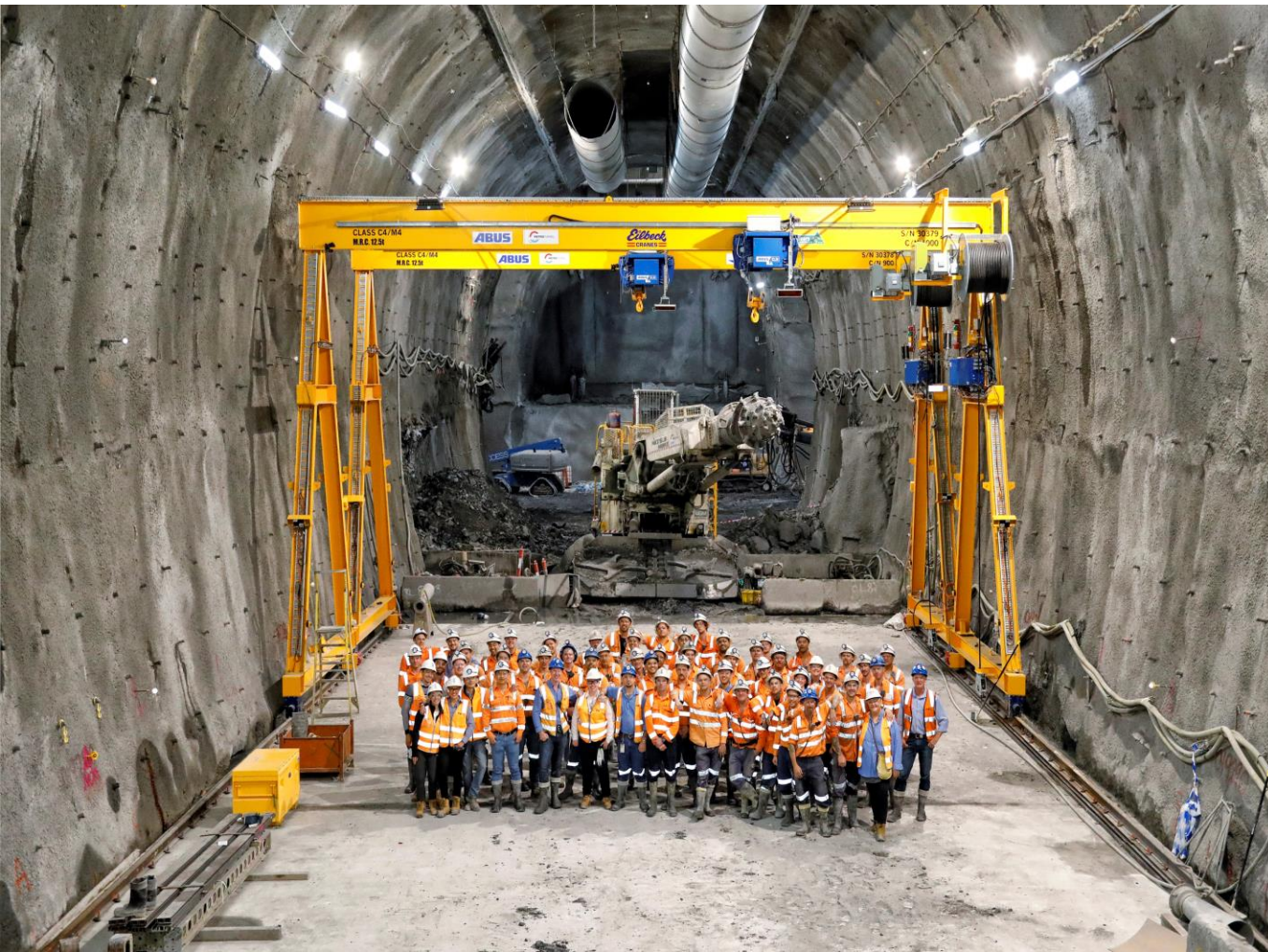


TBM STAGING



STATE LIBRARY STATION UPDATE





TUNNELLING UPDATE



FRANKLIN ADIT

Future State Library Station entrance ▲

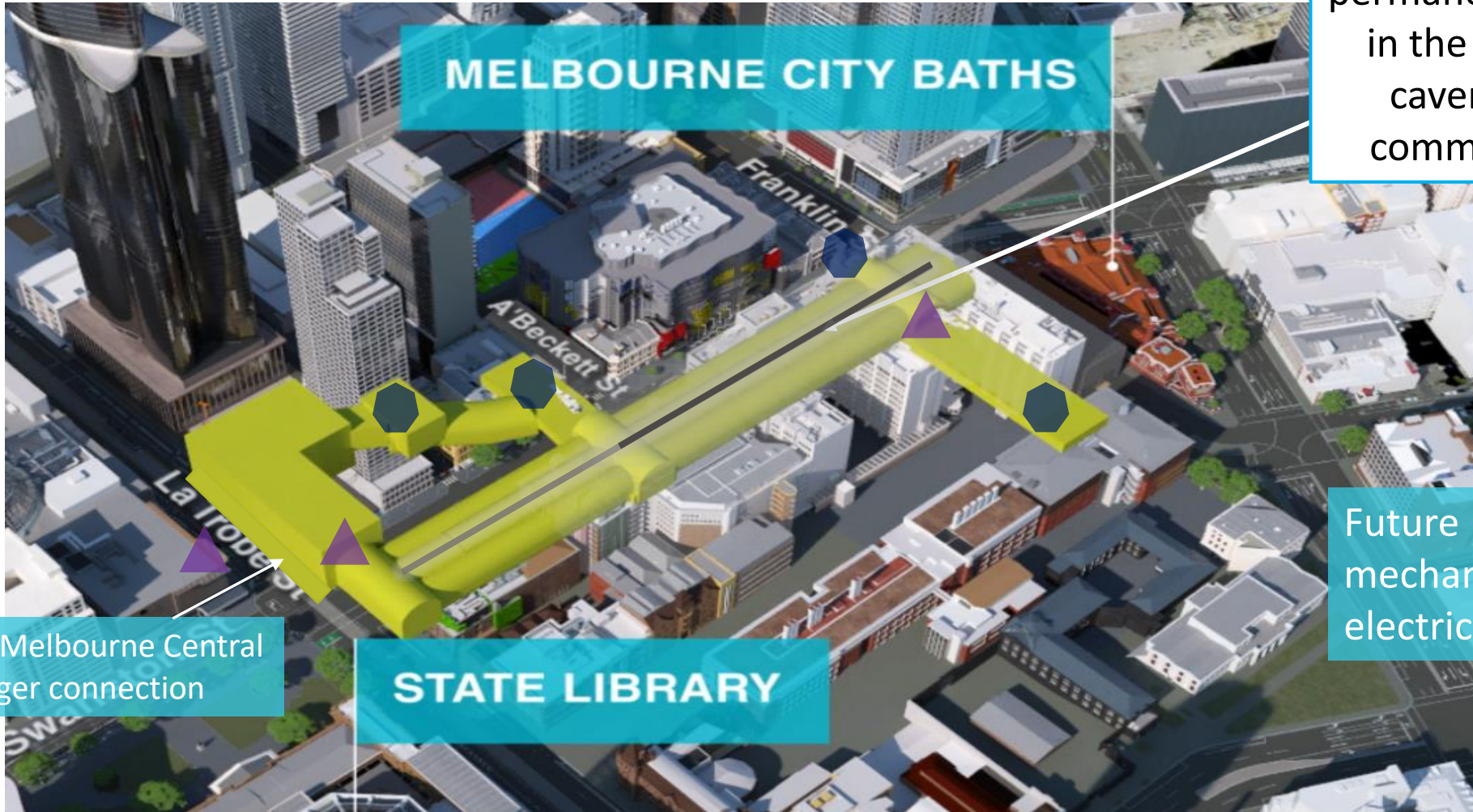
Future Melbourne Central passenger connection

MELBOURNE CITY BATHS

STATE LIBRARY

Construction of permanent works in the central cavern has commenced

Future mechanical and electrical ●



A'Beckett Street site

Tunnelling

- 24/7

Franklin Street East site

Tunnelling


- 24/7

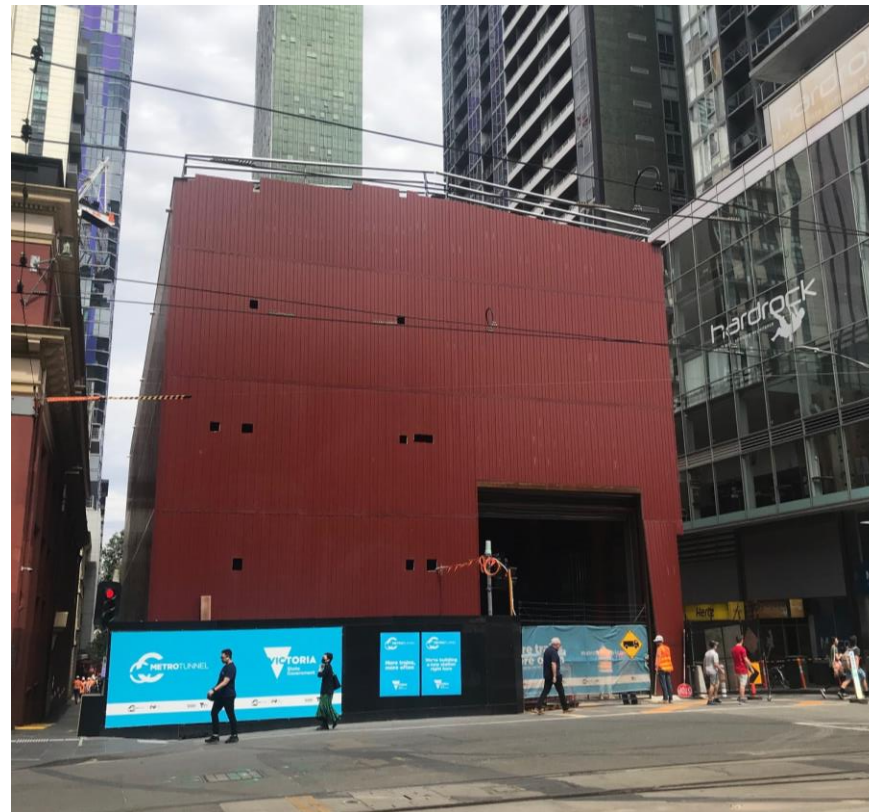
The Franklin Street East site has started constructing the underground station platform, this involves delivery of steel and concrete to the site using trucks.



FRANKLIN STREET WEST UPDATE

FRANKLIN STREET WEST UPDATE

Activity	Location	Feb	Mar	April	May	June	July
Shaft construction	Site						





LITTLE LA TROBE STREET UPDATE

LITTLE LA TROBE STREET SITE UPDATE

Activity	Feb	Mar	April	May	June	July
Piling	●————●					
Plunge column installations		●————●				
Underpinning works	●————●					

Stages of piling

1

SETTING UP THE RIG

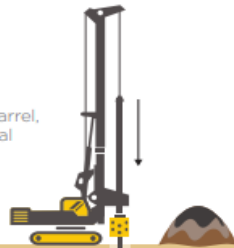
Deliver the rig to site and move it into position



2

DRILLING

Drilling holes into the ground using a core barrel, and excavating material



3

STEEL REINFORCEMENT

Removing the material and inserting a prefabricated steel reinforcement cage into the hole



4

CONCRETE POURING WITH TREMIE PIPE

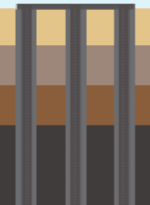
Pouring concrete into the hole to form the pile. Once the concrete sets, the pile is complete



5

CAPPING THE PILES

Once the piles are constructed, the top layer of concrete is removed and topped by a capping beam to prevent lateral displacement.



Start of the pile top removal process

LITTLE LA TROBE UPDATE

Piling works

- Monday to Saturdays, 7am to 6pm
- Concrete pours and other activities which generate low levels of noise may be required from 6pm to 10pm on weeknights.

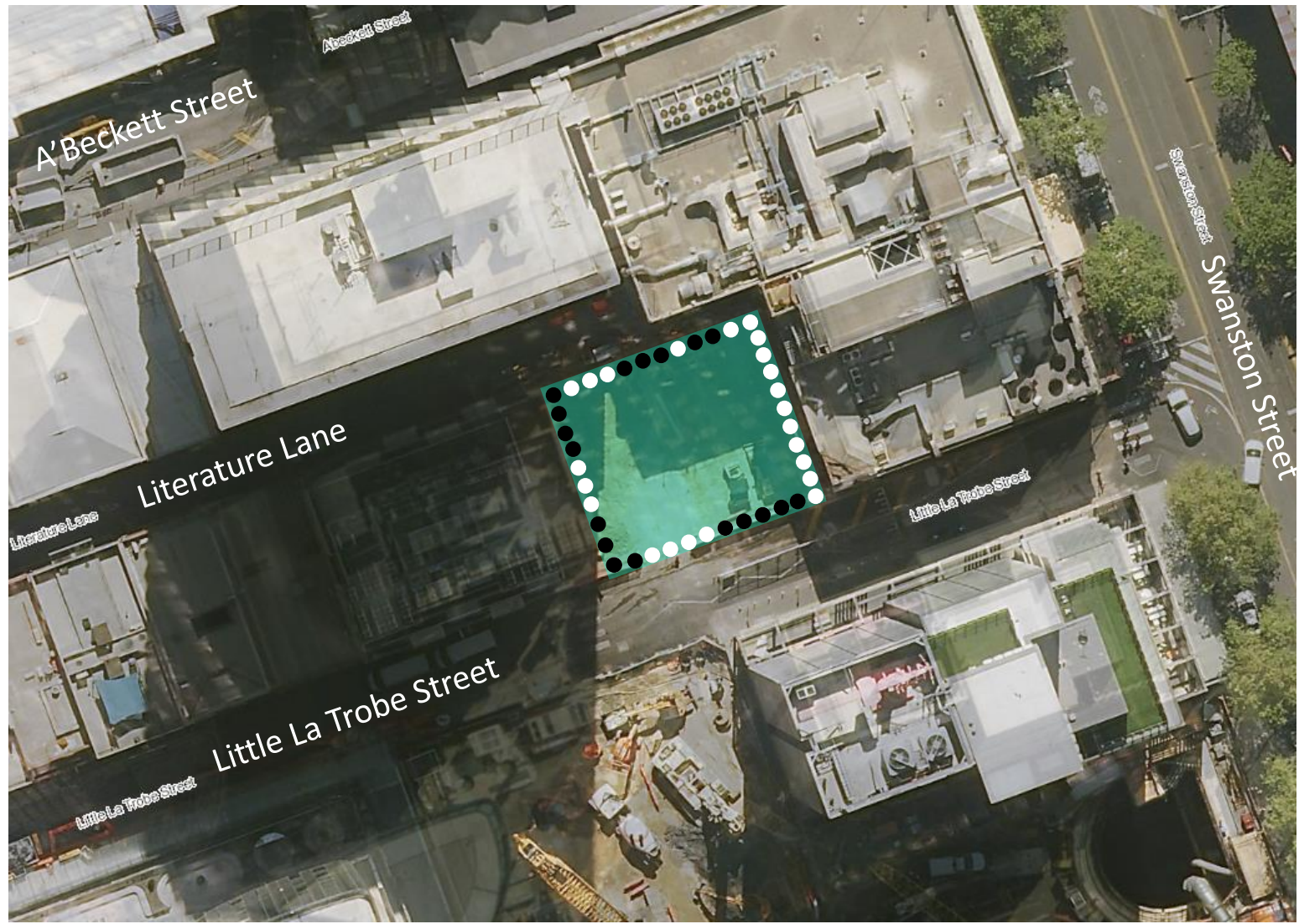
Underpinning works at the eastern end of the Little La Trobe Street site

- Monday to Saturdays, 7am to 6pm
- Concrete pours and other activities which generate low levels of noise may be required from 6pm to 10pm on weeknights.

LITTLE LA TROBE STREET SITE PILING

Perimeter piling

- 34 of 67 complete ●





LA TROBE STREET UPDATE

LA TROBE STREET SITE UPDATE

Activity	Location	Feb	Mar	April	May	June	July	
Perimeter piling and plunge column installation	Site	[Timeline bar from Feb to May]						
Tower crane installation	Site	[Timeline bar in Feb]						
Slab works	Site			[Timeline bar from April to July]				
Excavation	Site		[Timeline bar from Mar to July]					

LA TROBE STREET SITE PILING

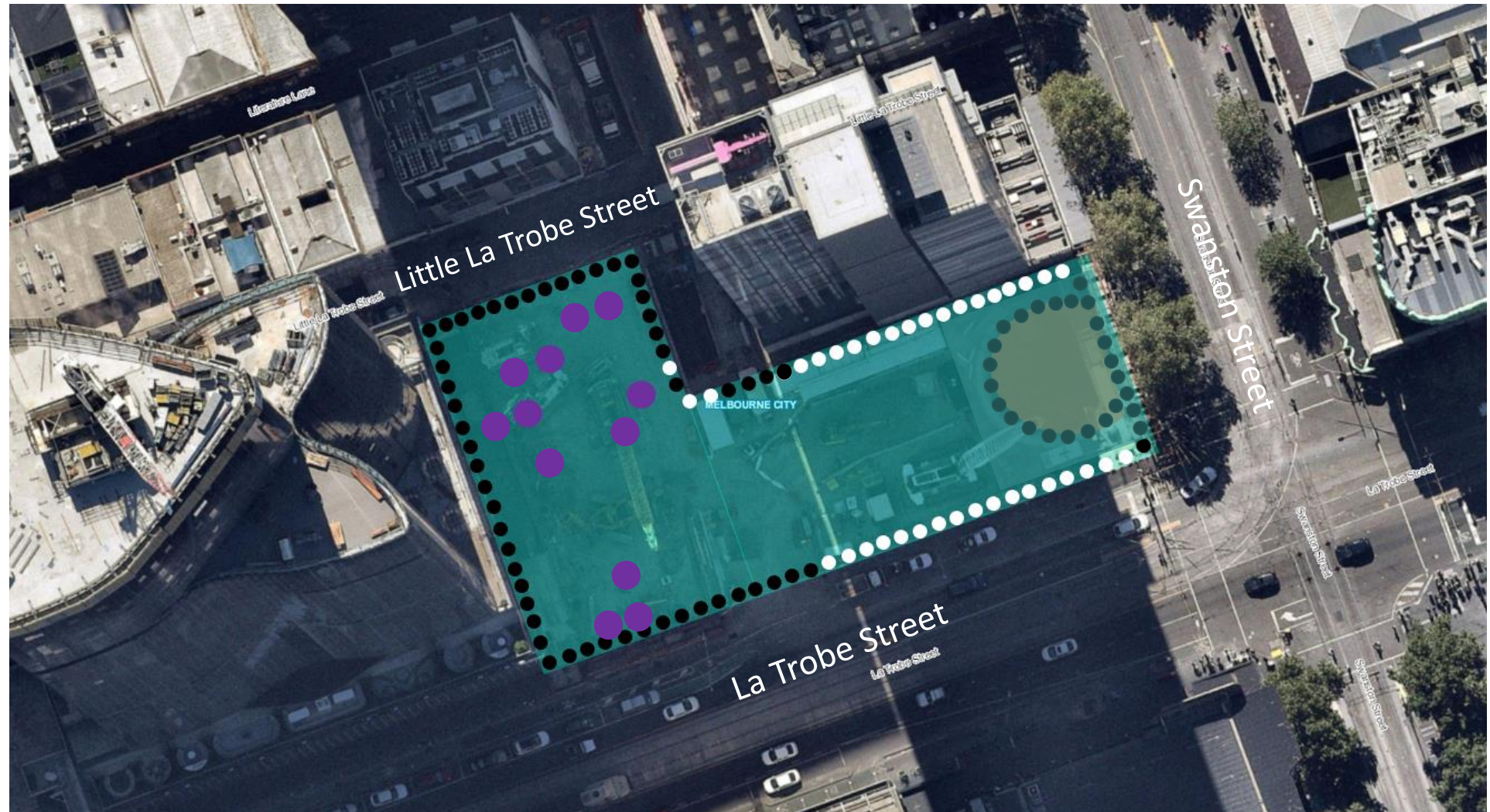
Perimeter piling

- 104 of 172 complete



Plunge columns

- 19 of 56 complete



Tower crane installation

- Continuous works will be required under an eastbound road closure of La Trobe Street from late February
- A road closure will also be required on Little La Trobe Street during assembly of the crane boom

Piling and plunge column works

- Monday to Saturdays, 7am to 6pm
- Concrete pours and minor works, Monday to Fridays, 6pm to 10pm

Oversized deliveries

- 1am to 7am, as required

QUESTIONS?

