



SOUTH YARRA (EASTERN PORTAL) PRECINCT COMMUNITY REFERENCE GROUP

JUNE 2020

COVID-19 UPDATE

- Construction is continuing on the Metro Tunnel Project
- The health and safety of the community and our workers is our key priority
- We have strict protocols in place to protect the safety of our construction workforce and the community, including:
 - enhanced industrial cleaning arrangements
 - provision of personal protective equipment
 - measures to reduce staff contact to reduce contact between the workforce
 - RIA is running two pre-starts between 6am and 7am to ensure social distancing.



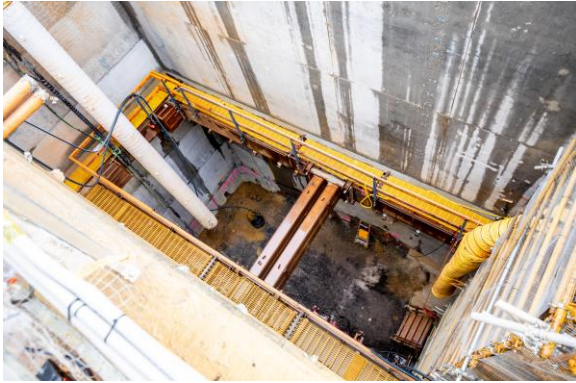


PROGRAM

CONSTRUCTION LOOKAHEAD FOR 2020



CONSTRUCTION PROGRESS - RIA





CONSTRUCTION LOOKAHEAD

Ongoing works - South Yarra Siding Reserve

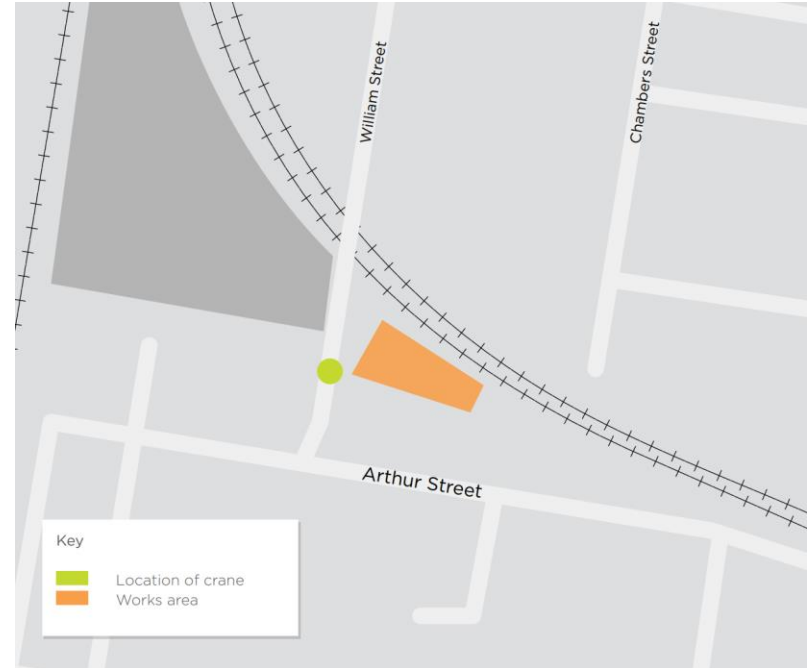
- Excavation, steel tying and fixing, waterproofing and concrete pours for the tunnel entrance
- Continued excavation of the egress shaft – these works are taking place between 7am – 10pm, from 9 to 27 June
- Installation of detention tank precast panels
- Stub tunnel construction – TBM retrieval shaft

Upcoming works - South Yarra Siding Reserve

- Osborne Street bridge deliveries and beam installation works
- 24/7 works between South Yarra and Malvern stations over one weekend
- Egress shaft excavation – 24/6 works, from 29 June – 30 September

UPCOMING 24/6 EGRESS SHAFT WORKS

- Due to unfavourable ground conditions and recent poor weather, works within the egress shaft will take place 24 hours a day, six days per week
- 24/6 works will start 29 June and are expected to be completed by 30 September – there will be no works on Sundays
- Works will involve the ongoing excavation of the egress shaft, with additional installation of support struts taking place when required
- During this period, it's expected there will be 55 nights of work – these nights won't take place consecutively
- Modelling indicates that noise levels will be moderate to low. However, proactive relocation will be offered to residents in the area



Location of works

PROGRESS UPDATE



TBM RETRIEVAL SHAFT PROGRESS UPDATE



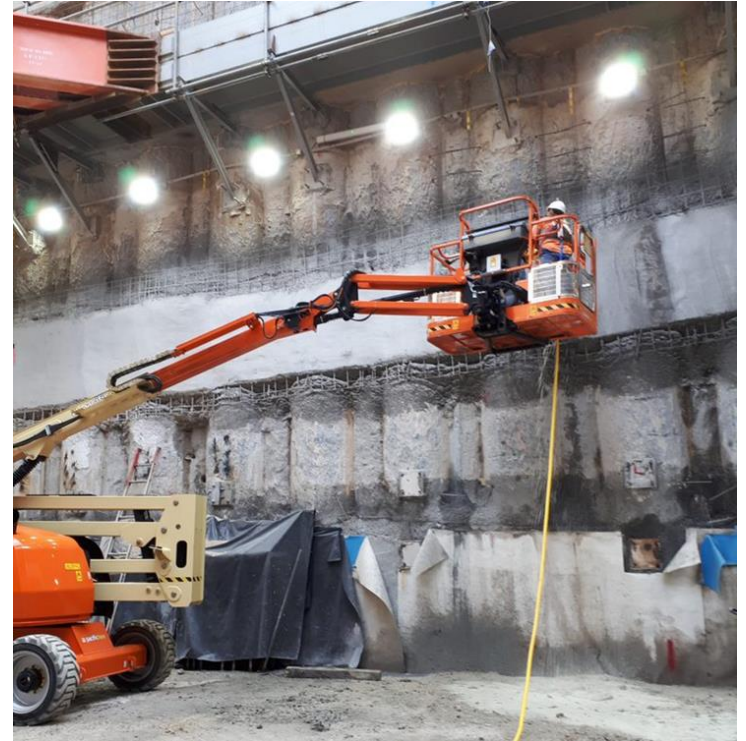
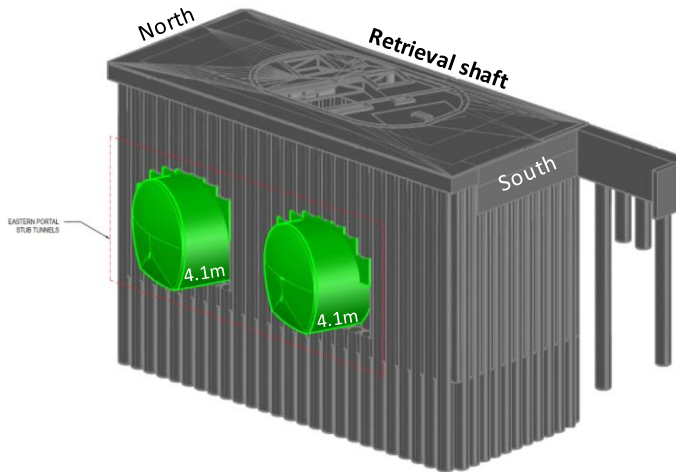
Ramp modification works in May



Completed structural wall on northern end of the retrieval shaft

TBM RETRIEVAL SHAFT UPCOMING WORKS

- Construction of two 4.1m stub tunnels in western wall of shaft is ongoing until August
- Probe drilling and installation of face bolts has been completed
- Pile breakout, excavation and shotcreting will commence in the coming weeks



Early stages of stub tunnel construction



TUNNELLING UPDATE

TUNNELLING UPDATE

- Both TBMs, Millie and Alice, have commenced their drive from the Anzac Station site to South Yarra
- The final TBM parts have been connected in the station box after the TBMs moved forward to create room for their installation



The eastbound tunnel at Domain

CURRENT TBM LOCATIONS



TUNNELLING UPDATE - TBM RETRIEVAL PLAN

- The TBMs will arrive at the retrieval shaft in late 2020 where they will be disassembled and transported back to Domain
- Of the 36 parts, 20 need to be transported above ground and 16 will be pulled back through the completed tunnel
- These TBM parts are classified as oversized deliveries and will need to be transported between 1am and 5am
- The TBM parts are disassembled in the retrieval shaft and then lifted to surface for removal from site
- Disassembly works will occur 24/7 within the shaft from breakthrough until completion of TBM retrieval



A gantry piece



COMMUNITY & COMMUNICATIONS UPDATE

COMMUNICATIONS

Recent and upcoming communications

- In late May, the June construction update was delivered to approximately 5600 residents and businesses within the South Yarra area. This notification included additional residents between South Yarra and Hawksburn stations
- Several dedicated notifications regarding additional works between Malvern and Caulfield stations were also distributed
- An additional notification has been distributed to residents in South Yarra for the egress shaft out of hours works.





DEVELOPMENT PLAN UPDATE

DEVELOPMENT PLAN UPDATE

Recent amendment to Development Plan

- The most recent amendment, which highlighted changes to the Arthur St promenade, an addition of a pocket park on William St and architectural features to Osborne St bridge, was submitted to the Minister for Planning in late May
- We expect to receive a response from the Minister in the coming weeks.

Additional amendment to Development Plan

- Amendment will cover the installation of essential rail infrastructure along the rail corridor and at the corner of Chambers and William streets, near Lovers Walk
- The plan is expected to be made available for community comment in mid-to-late July. More information will be provided closer to the date.





TRAFFIC AND TRANSPORT

UPCOMING TRAFFIC CHANGES

Toorak Road and William Street

- Parking will temporarily be removed on Toorak Road and William Street from 10-12 June, to allow for delivery of the Osborne Street bridge beams
- Traffic management will be in place on Yarra Street from 19-21 June as we complete drain completion works.

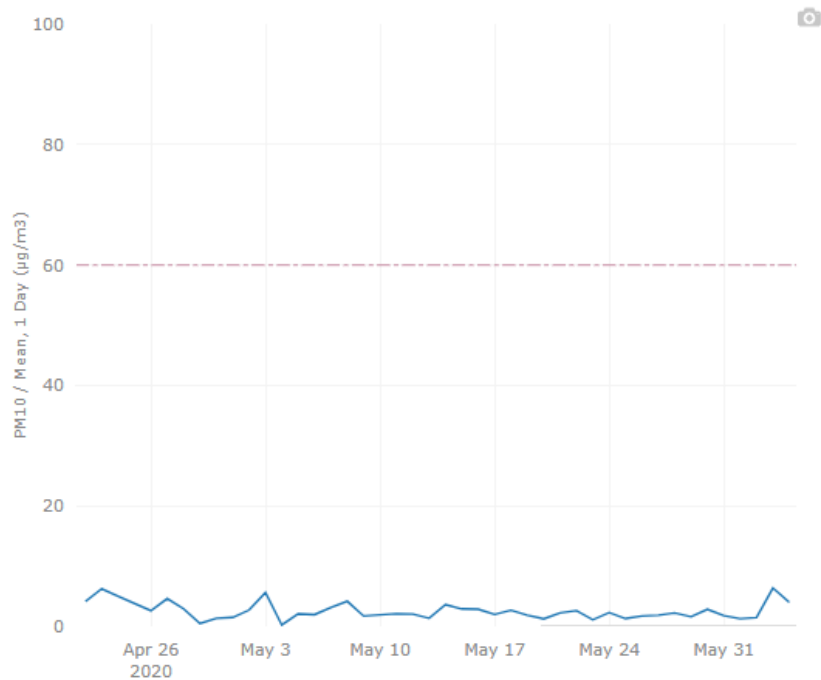




ENVIRONMENTAL MANAGEMENT

AIR QUALITY MONITORING

DEVICE DATA



Location:

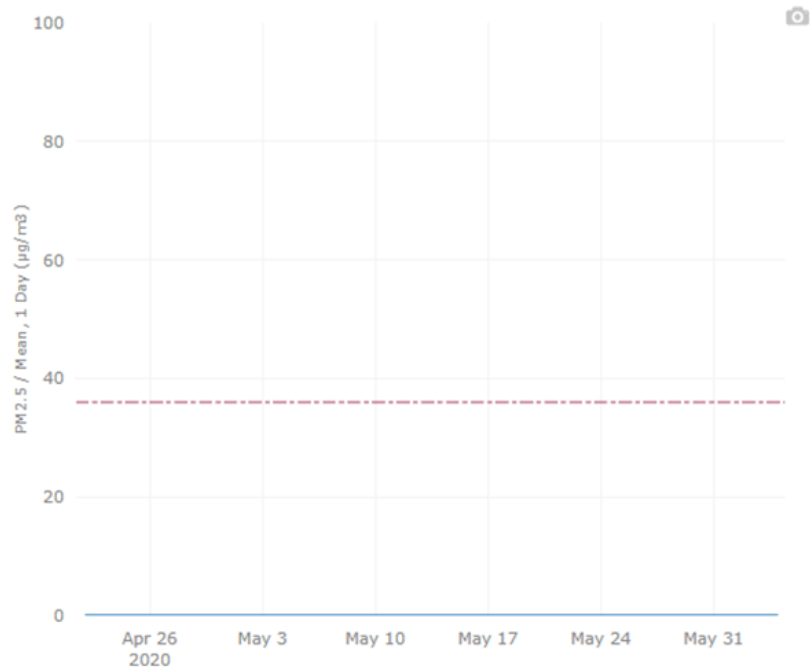
Osborne Street (PM10)

Date range:

April – June 2020

AIR QUALITY MONITORING

DEVICE DATA



Location:

Osborne Street (PM2.5)

Date range:

April – June 2020

NOISE MODELLING

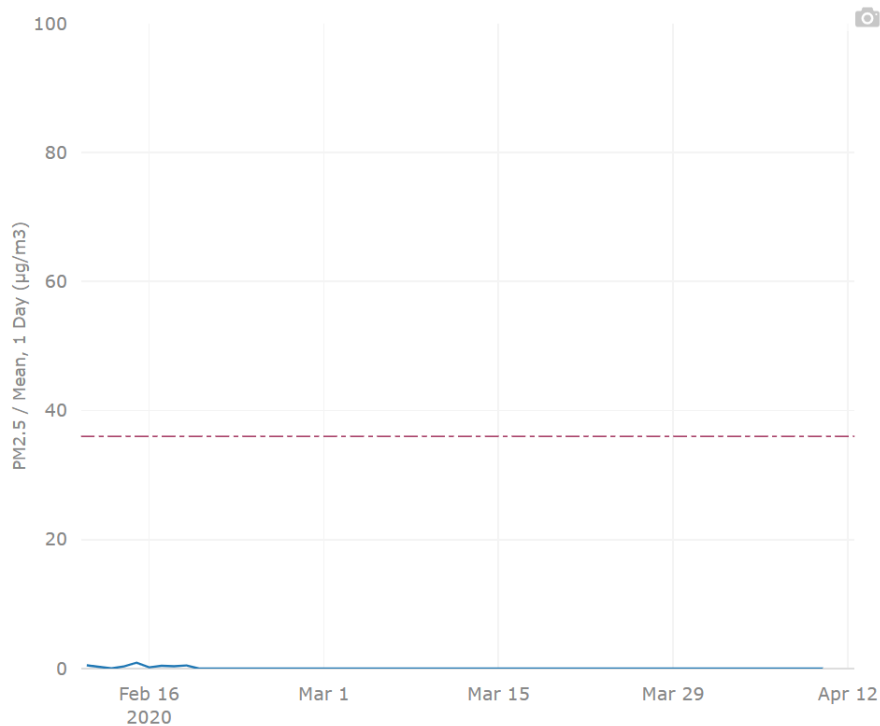
Noise modelling has been completed for the upcoming stub tunnels works at Eastern Portal.

Receiver location	Unmitigated predicted noise level dB LAeq(15min)
125 Osborne Street	70
30 Arthur Street	58
21 William Street	55

** Modelled noise levels are unmitigated*

AIR QUALITY MONITORING

DEVICE DATA



Location:

Osborne Street (PM2.5)

Date range:

February – April 2020



AIR QUALITY MONITORING

Location:

Osborne Street (PM10)

Date range:

February – April 2020



NOISE QUALITY MONITORING

TO BE UPDATED

Activity:

Concrete prep works, formwork and reinforcement - day works only

Location:

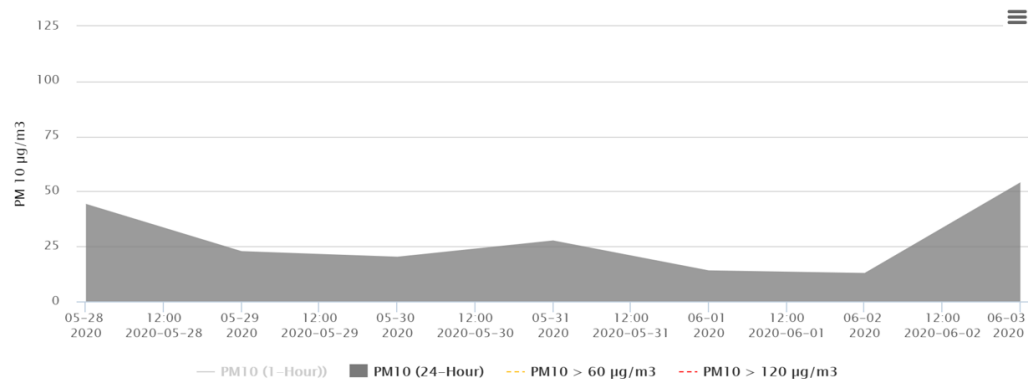
Osborne Street

Date range:

13 - 17 April

AIR QUALITY MONITORING

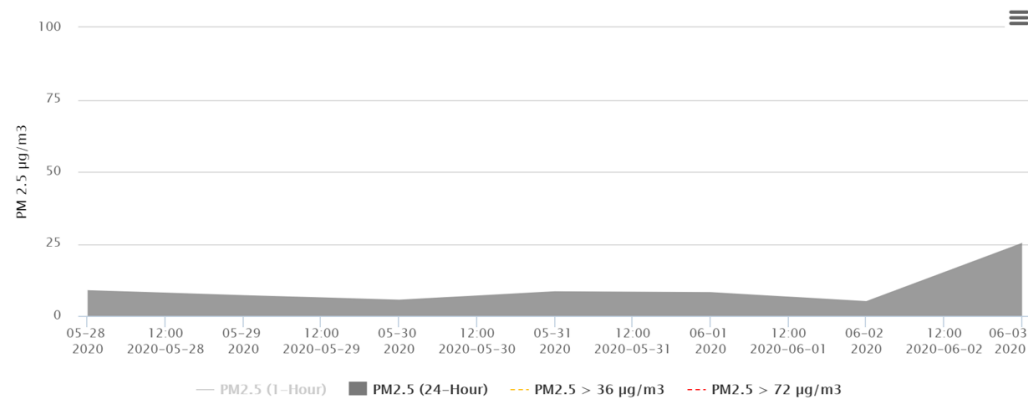
Eastern Portal 2: PM10 Graph



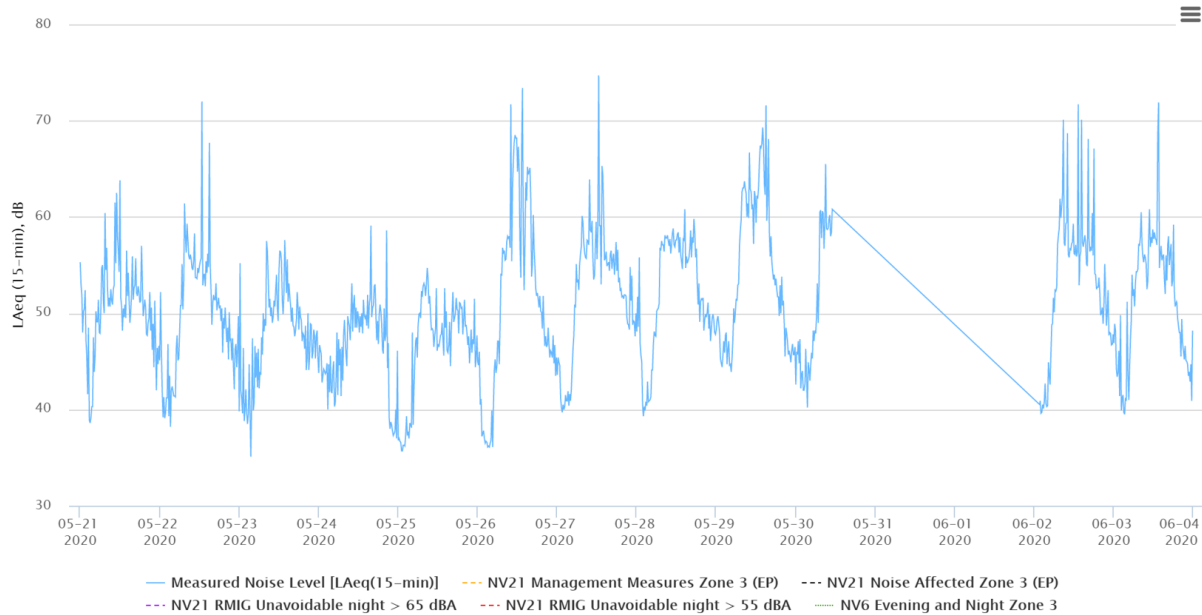
Location:
William Street

Date range:
8 May to 3 June 2020

Eastern Portal 2: PM 2.5 Graph



NOISE MONITORING



Location:

William Street

Date range:

21 May to 4 June
2020



VIBRATION MONITORING

The William Street vibration monitor has temporarily been removed for recalibration. An update will be provided at the next CRG.

Location:

William Street

Date range:



QUESTIONS?