

SOUTH YARRA (EASTERN PORTAL) PRECINCT

COMMUNITY REFERENCE GROUP

1 DECEMBER 2020





PROGRAM

CONSTRUCTION PROGRESS

RIA




PROGRESS UPDATE

CYP



CONSTRUCTION LOOKAHEAD FOR 2020



 Around the clock Monday to Friday and from 7am to 3pm on Saturday

 24/7



CONSTRUCTION UPDATE - CYP

TUNNELLING UPDATE

- All oversized pieces of the TBMs have now been returned to site on St Kilda Road
- 24/7 works continue in the retrieval shaft to facilitate the retrieval of each of the TBM gantry pieces, which will be pulled back through the completed eastbound tunnel.
- All of TBM Millie's gantry pieces have been returned to the station box, with XX of TBM Alice's gantry pieces still to be retrieved
- The gantry crane will be used to pick up and turn the pieces around before they are pulled back through Millie's completed tunnel.
- CYP team will breakthrough shaft wall into RIA site in December

Picture to go here

[caption]

CROSS PASSAGE UPDATE

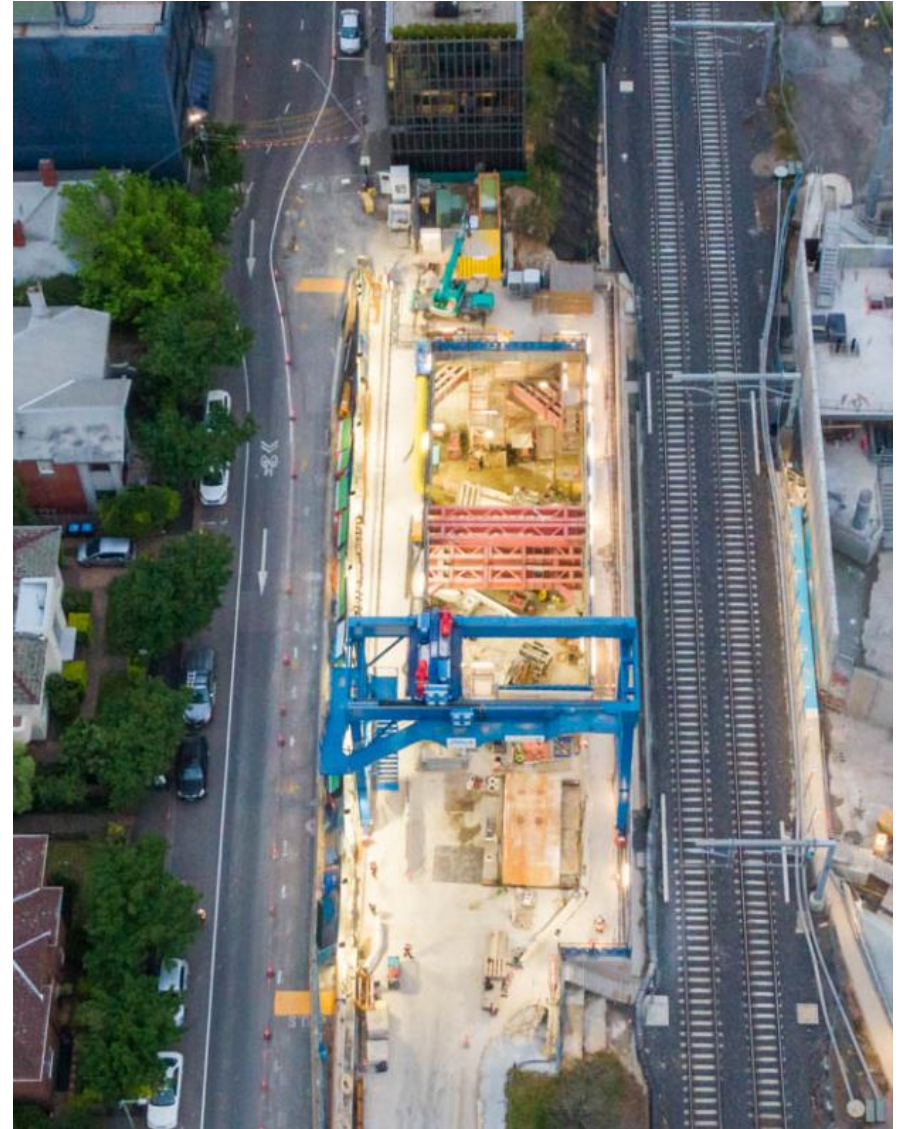
- Preparatory works for cross passage construction are underway from the Eastern Portal and will continue into next year
- This includes mobilising working platforms, grouting to improve ground conditions, and installing supporting structures for the excavation
- There are six cross passages located between Anzac Station and the Eastern Portal, with excavation on these set to commence in early 2021
- Works to facilitate the cross passage construction will operate out of Eastern Portal

Picture to go here

[caption]

- Cross passage construction ongoing until mid 2021
- Tunnel fit out works will continue between 2021 and 2023
- William Street will be reopened late 2022
- Shaft build-out and Mechanical and Electrical building construction from late 2021 until mid-2023
- Final fit-out, landscaping and roadworks early-mid 2023
- Handover/completion mid-late 2023

*Subject to confirmation





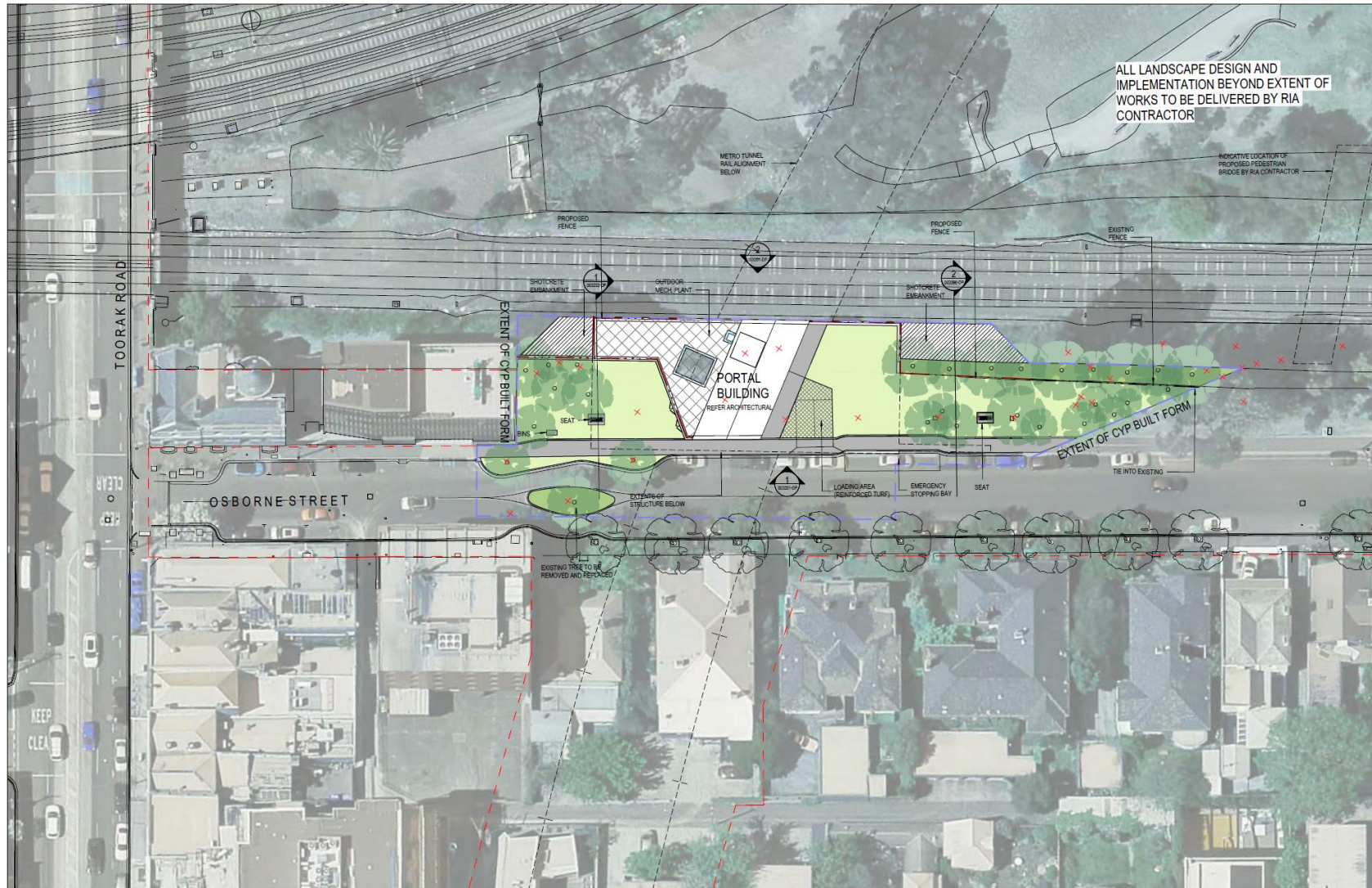
INTERIM DESIGN UPDATE- CYP

- Draft development plans were available for public display and comment from Friday 6 April to Friday 27 April 2018.
- Across the two portals (Eastern and Western) there were 22 submissions received. Seven of these provided comments on the Eastern Portal Development Plan
- Feedback was also received from the Design Review Panel, including the Office of the Victorian Government Architect

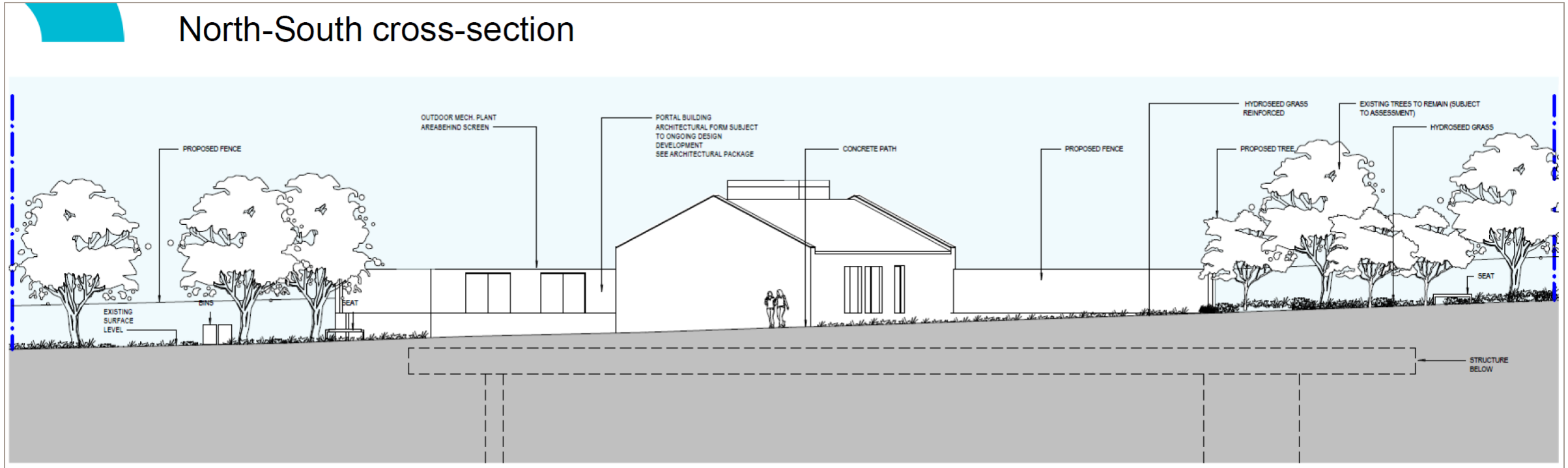


DEVELOPMENT PLAN REFRESHER

LANDSCAPE AND PUBLIC REALM

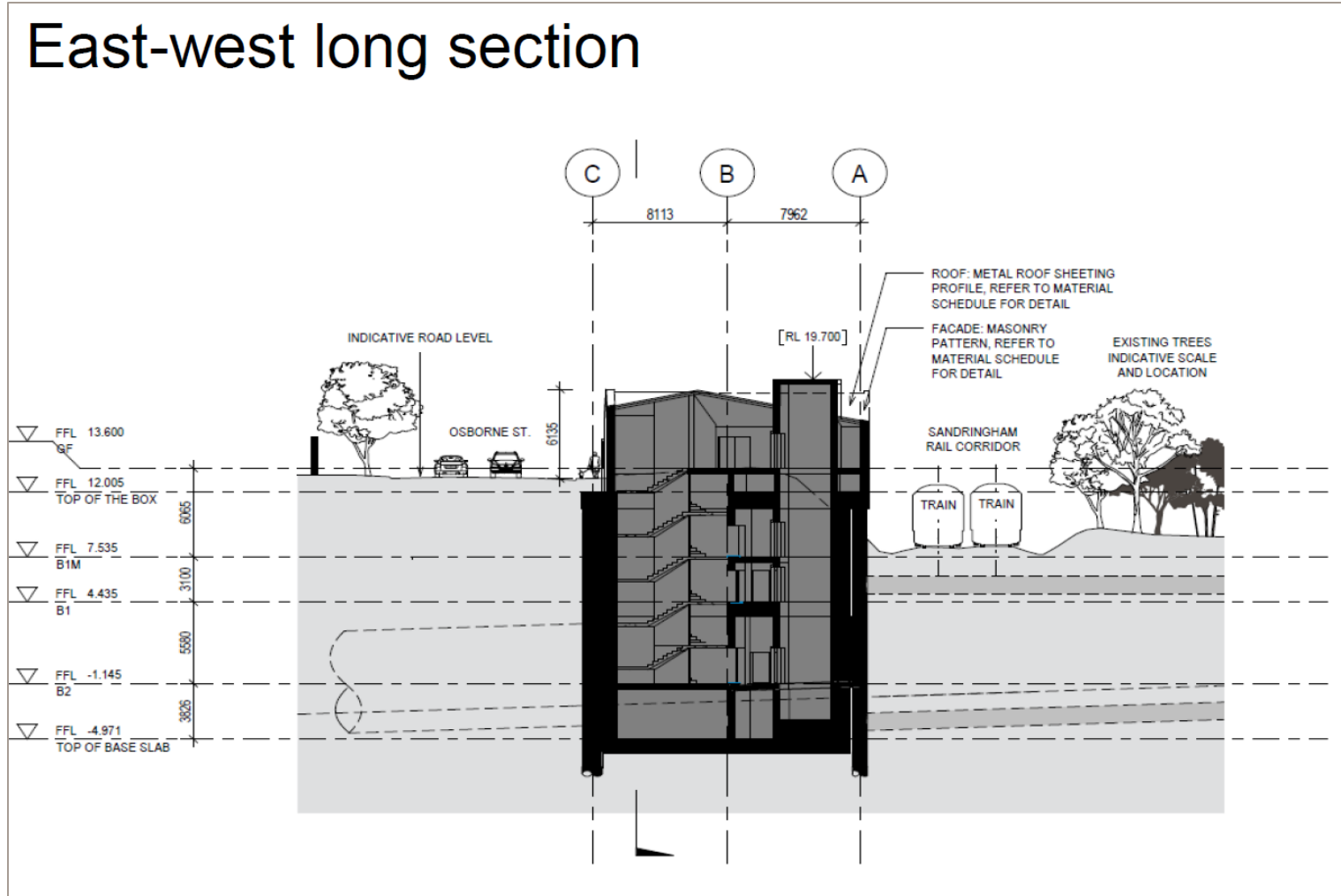


North-South cross-section



ACCESS BUILDING DESIGN

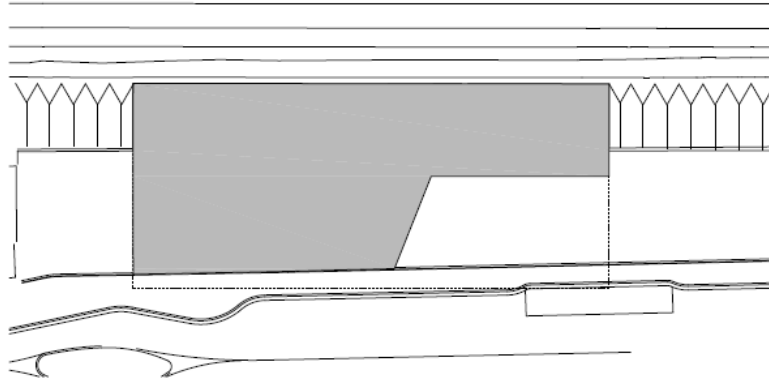
East-west long section



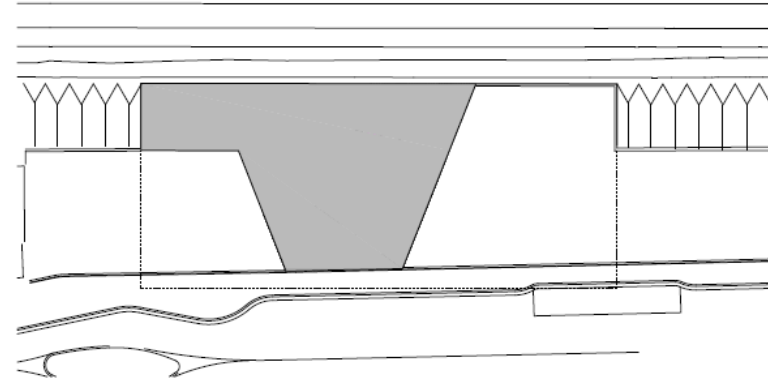


INTERIM DESIGN - CYP

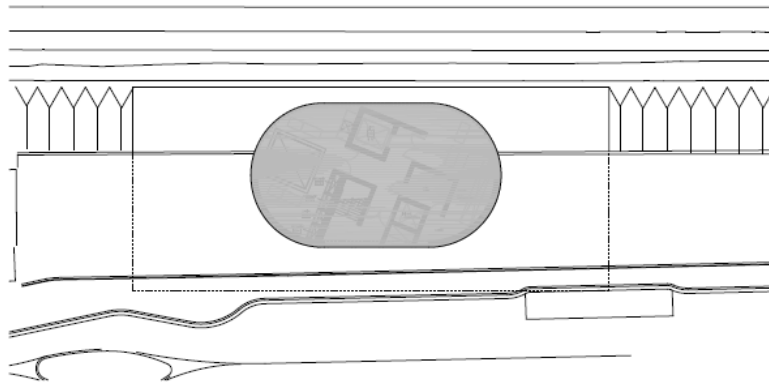
FOOTPRINT REDUCTION EVOLUTION



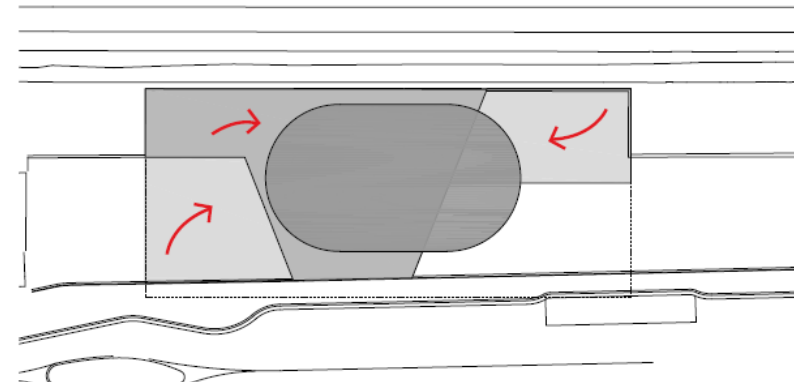
TENDER : 511m²



DP : 298m²



NEW LAYOUT : 228m²



FOOTPRINT REDUCTION EVOLUTION



BUILDING AT DEVELOPMENT PLAN

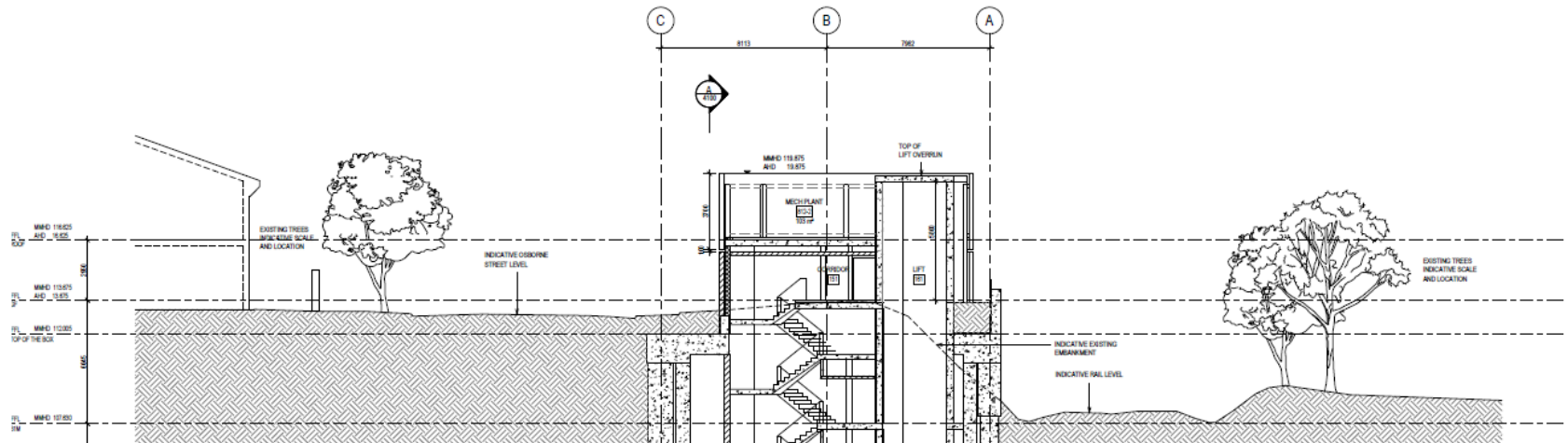
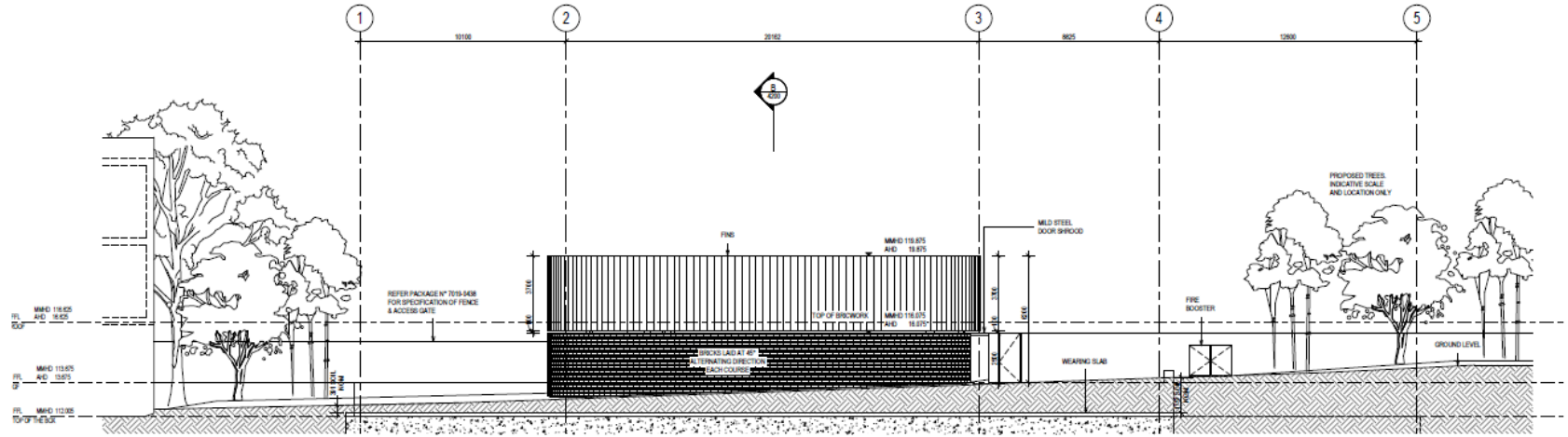


NEW LAYOUT

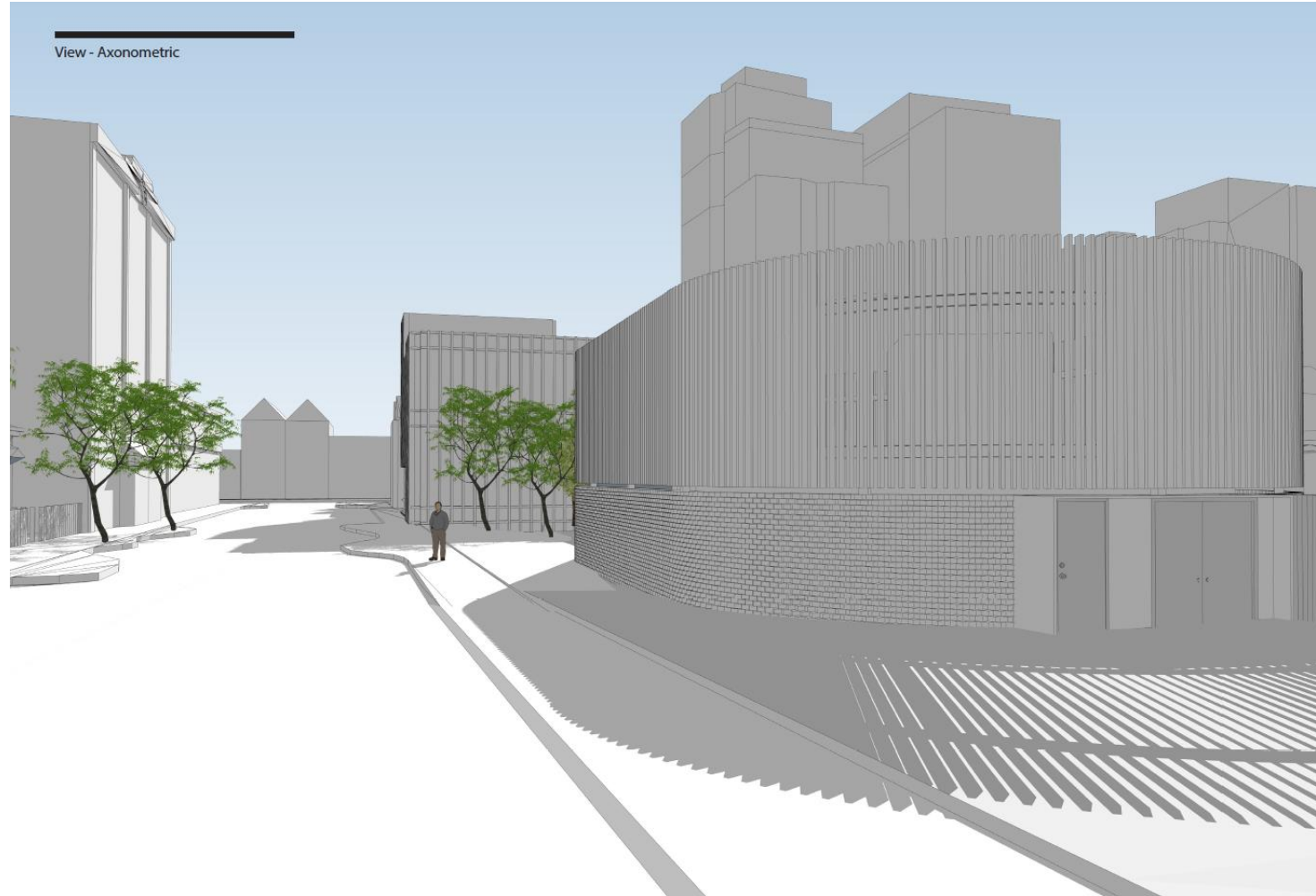


COMPARISON



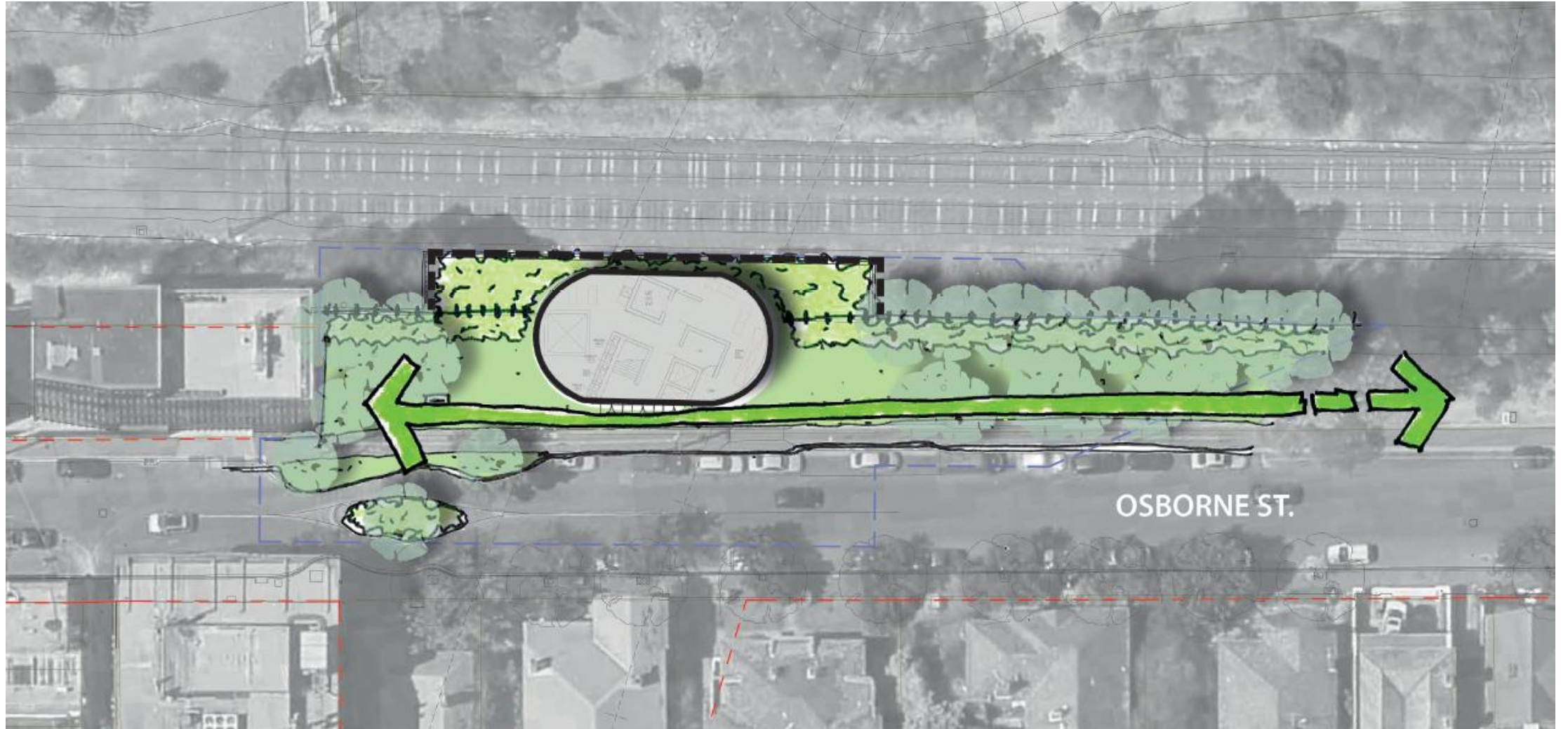


VIEW TOWARDS TOORAK ROAD

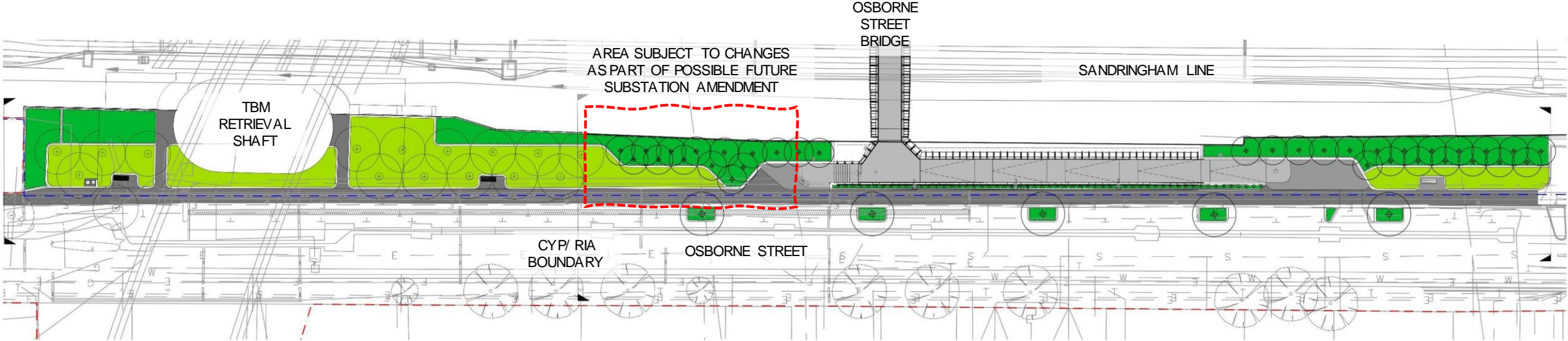


VIEW FROM TOORAK ROAD













OSBORNE STREET RESERVE RIA/ CYP COMBINED DESIGN



PLAN SHOWING COMBINED CYP & RIA PUBLIC REALM DESIGNS

LEGEND

-  EXISTING TREES TO REMAIN
-  PROPOSED TREES
-  TURF GRASS
-  GARDEN BED AREAS
-  CAST IN-SITU COLOURED EXPOSED AGGREGATE CONCRETE
-  PEDESTRIAN ASPHALT PAVING
-  PARK BENCH
-  LITTER BINS

OSBORNE STREET RESERVE RIA/ CYP COMBINED DESIGN



LEGEND

- EXISTING TREES TO REMAIN.
- PROPOSED TREES
- TURF GRASS
- GARDEN BED AREAS
- CAST IN-SITU COLOURED EXPOSED AGGREGATE CONCRETE
- PEDESTRIAN ASPHALT PAVING
- PARK BENCH
- LITTER BINS

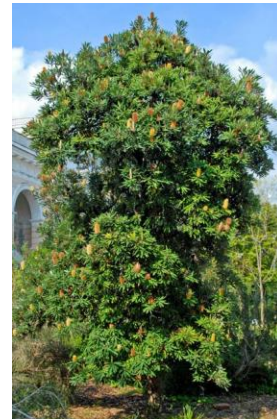
SELECTED TREE PLANTING IMAGES



CFFF – *Corymbia Ficifolia*
'Fairy Floss'
(6m x 4m)



LAG - *Lagerstroemia indica*
x *L. Fauriei*, Crepe Myrtel
(4m x 4m)



BAS – *Banksia Serrata*,
Old Man Banksia
(5m x 4m)



EUM – *Eucalyptus Melliodora*,
Eucalyptus 'Beardsell Pink'
(8m x 7m)

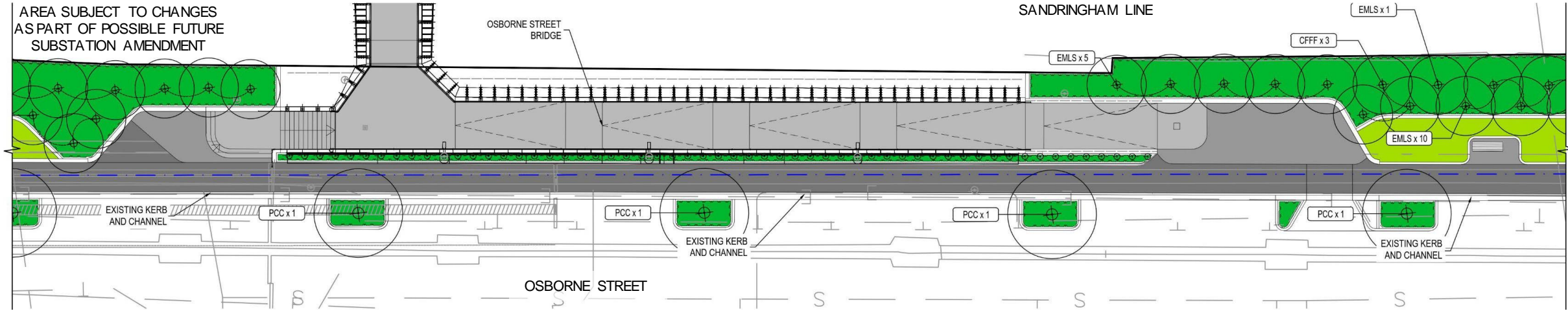


ACI – *Acacia implexa*,
Lightwood
(8m x 7m)



EMLS – *Eucalyptus Mannifera*
'Little Spotty'
(8m x 7m)

OSBORNE STREET RESERVE RIA/ CYP COMBINED DESIGN



LEGEND

- | | | | |
|--|---------------------------|--|--|
| | EXISTING TREES TO REMAIN. | | CAST IN-SITU COLOURED EXPOSED AGGREGATE CONCRETE |
| | PROPOSED TREES | | PEDESTRIAN ASPHALT PAVING |
| | TURF GRASS | | PARK BENCH |
| | GARDEN BED AREAS | | LITTER BINS |

SELECTED TREE PLANTING IMAGES



CFFF – *Corymbia Ficifolia*
'Fairy Floss'
(6m x 4m)

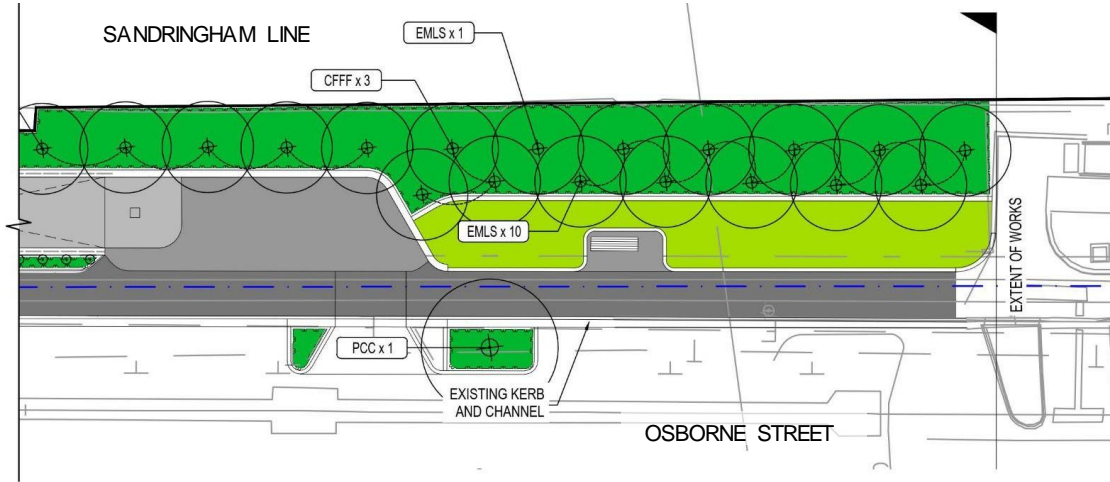


EMLS – *Eucalyptus Mannifera*
'Little Spotty'
(8m x 7m)



PCC – *Pyrus calleryana*
'Cleveland Select'
(11m x 6m)

OSBORNE STREET RESERVE RIA/ CYP COMBINED DESIGN



LEGEND

- | | | | |
|--|--------------------------|--|--|
| | EXISTING TREES TO REMAIN | | CAST IN-SITU COLOURED EXPOSED AGGREGATE CONCRETE |
| | PROPOSED TREES | | PEDESTRIAN ASPHALT PAVING |
| | TURF GRASS | | PARK BENCH |
| | GARDEN BED AREAS | | LITTER BINS |

SELECTED TREE PLANTING IMAGES



CFFF – *Corymbia ficifolia*
'Fairy Floss'
(6m x 4m)



EMLS – *Eucalyptus mannifera*
'Little Spotty'
(8m x 7m)



PCC – *Pyrus calleryana*
'Cleveland Select'
(11m x 6m)



COMMUNITY & COMMUNICATIONS UPDATE

COMMUNICATIONS

Recent and upcoming communications



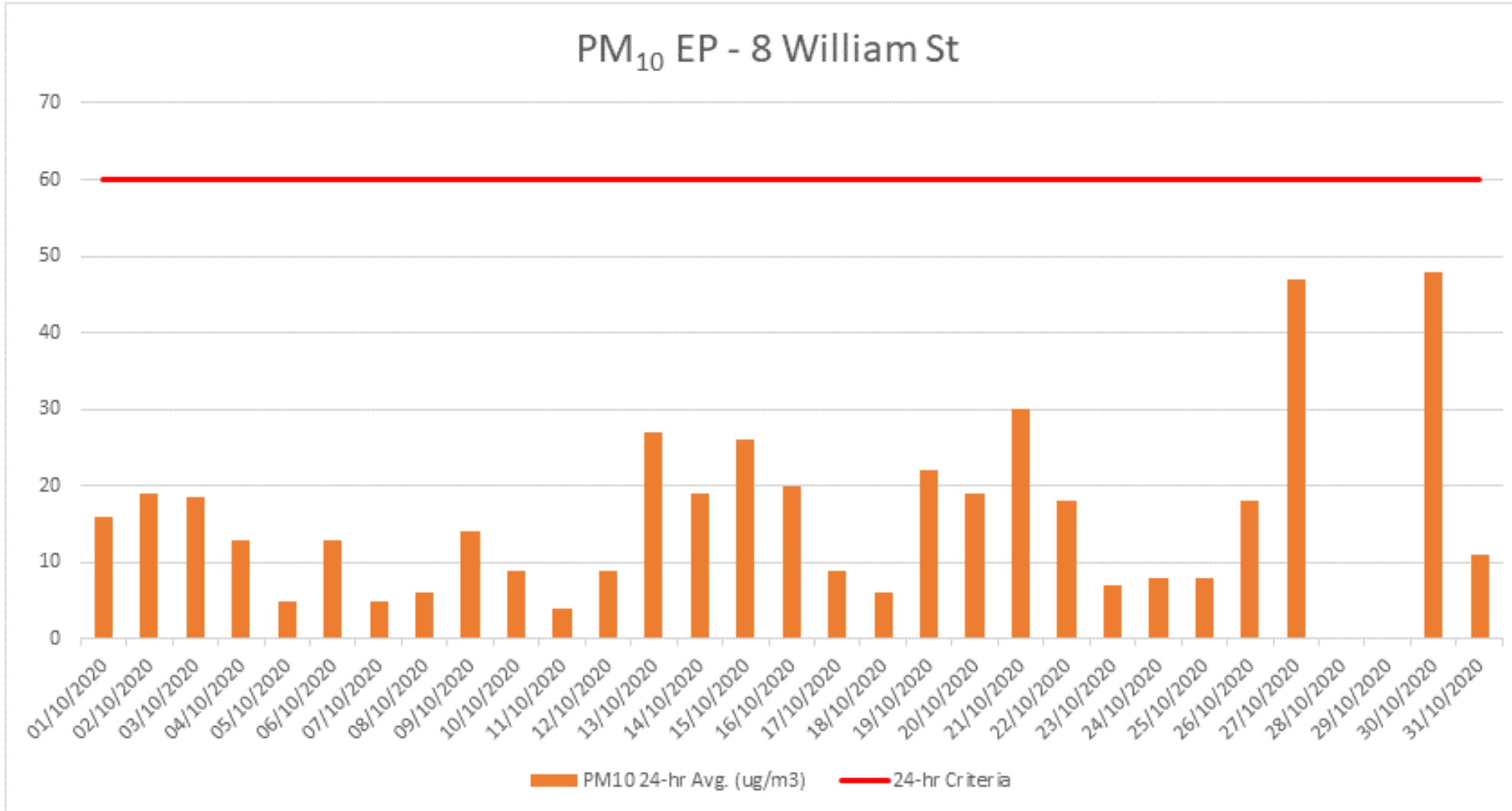
- The December construction update has been delivered to residents and businesses and is also available online
- Update also includes information about a short 24/7 rail occupation involving works around South Yarra station and along the corridor to Chapel Street





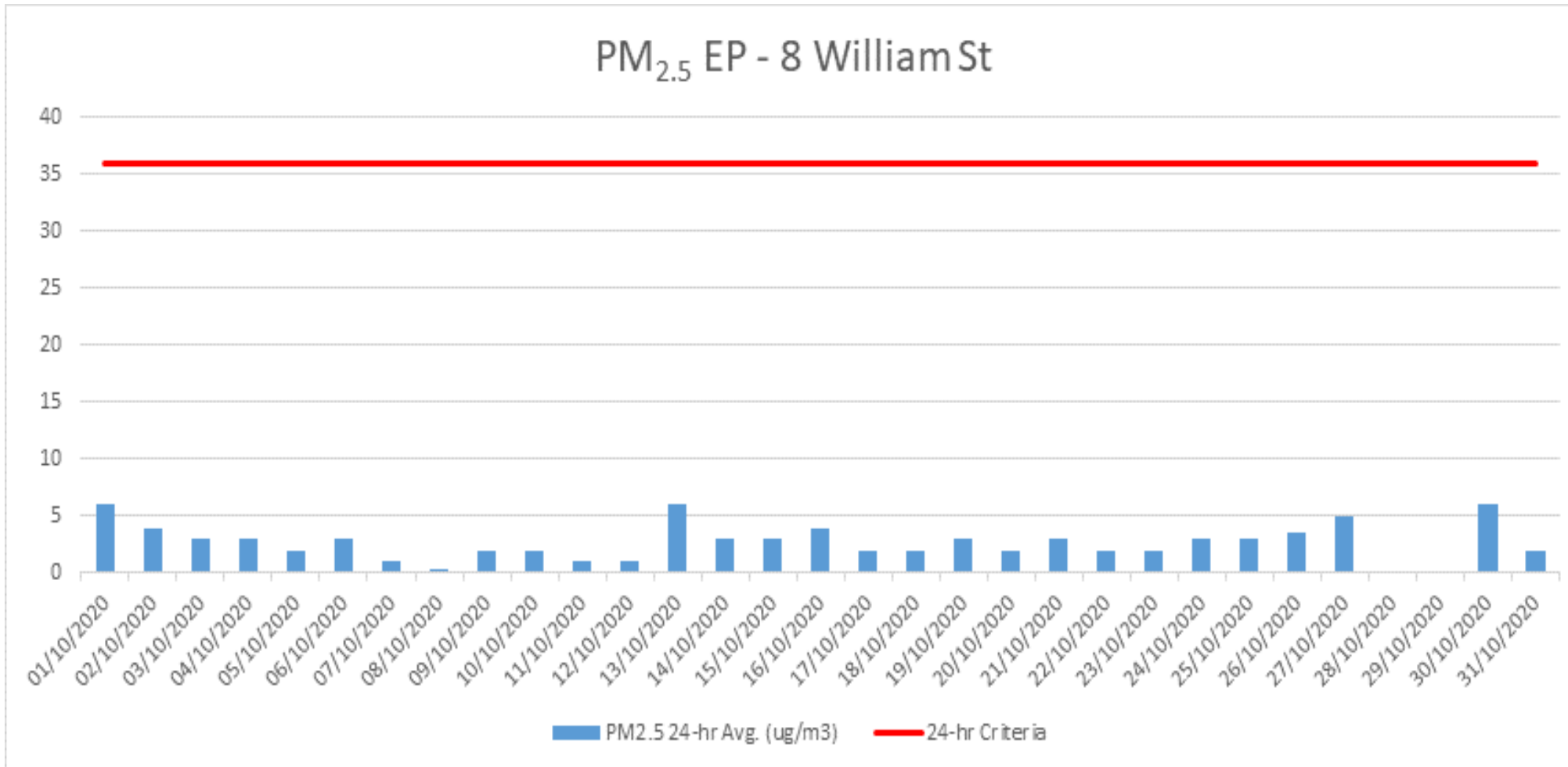
ENVIRONMENTAL MANAGEMENT

PM₁₀ EP - 8 William St



**William Street
October 2020
PM10**

PM_{2.5} EP - 8 William St



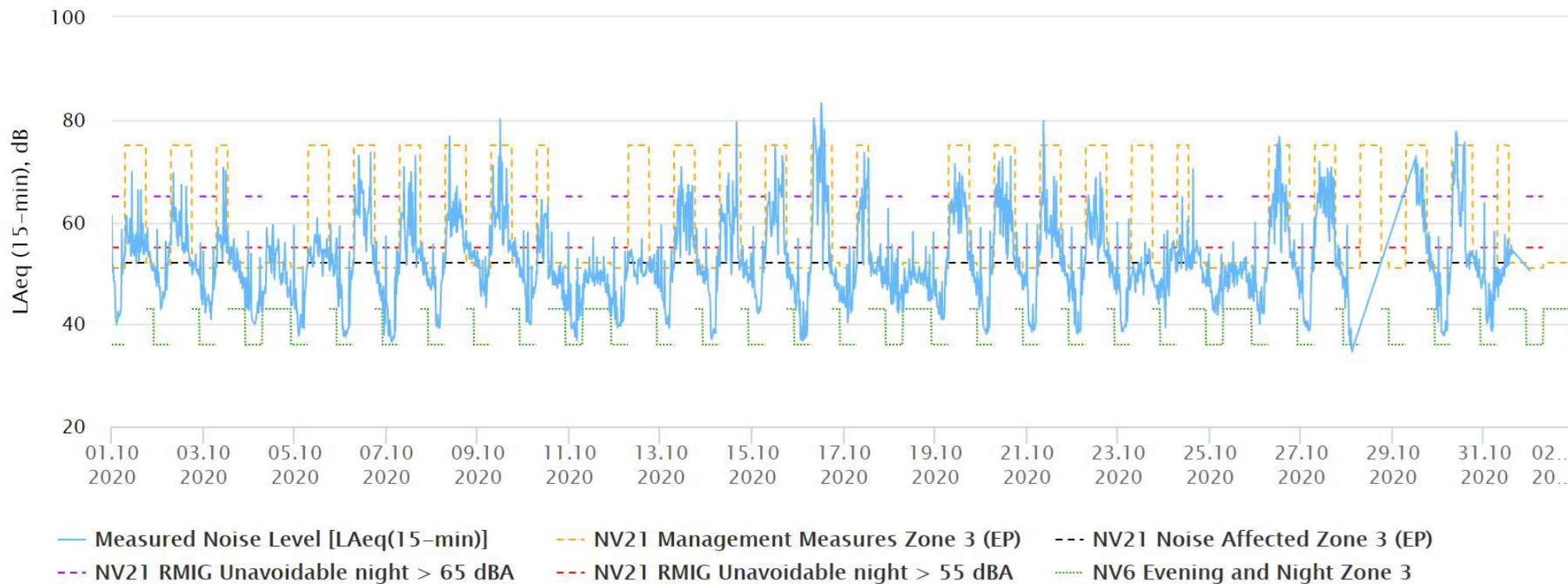
**William Street
October 2020
PM_{2.5}**

NOISE MONITORING

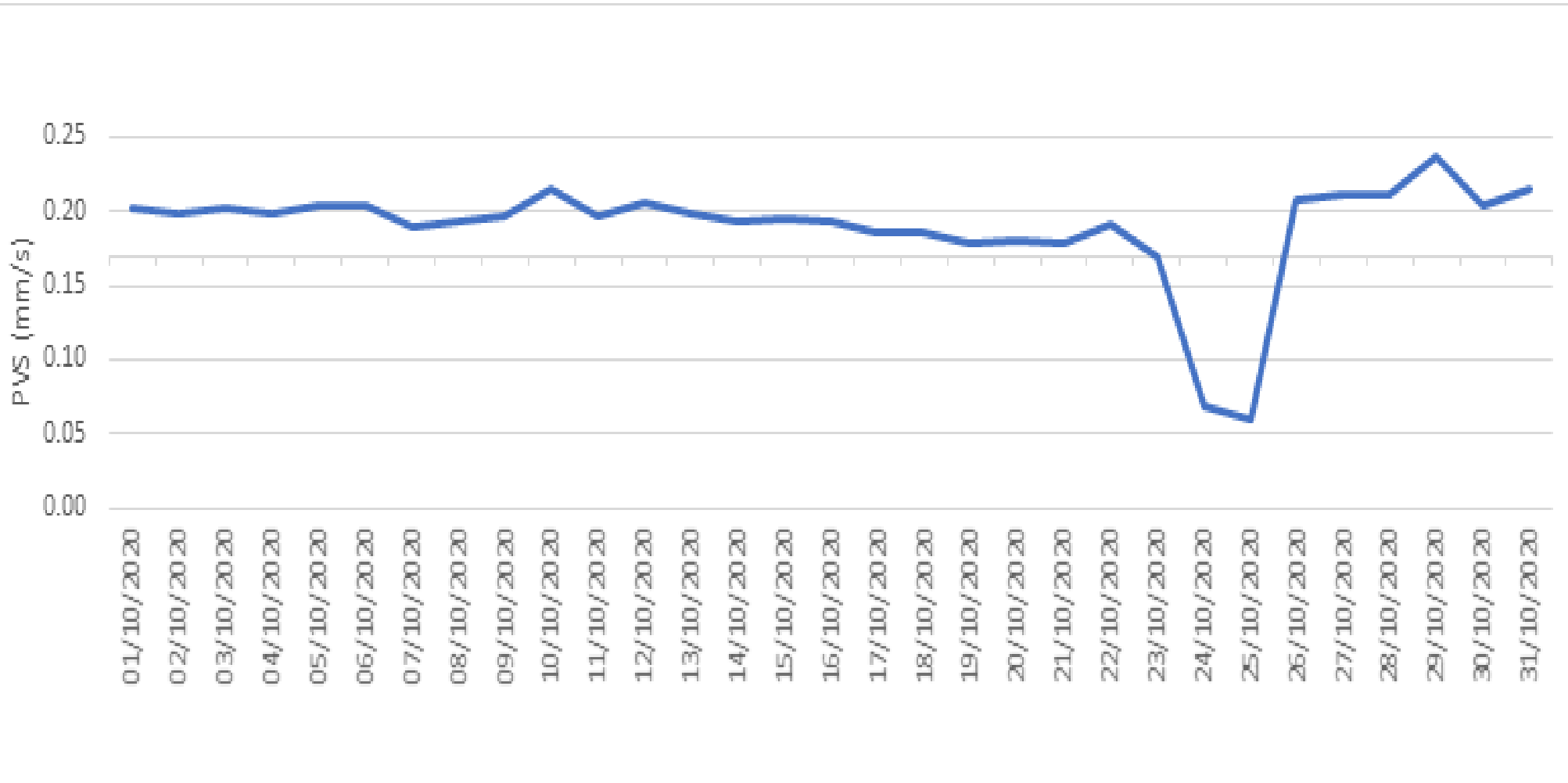


8 William Street, South Yarra: Measured Noise Levels

**William Street
October 2020**



VIBRATION MONITORING



**Eastern Portal
October 2020**



Questions?