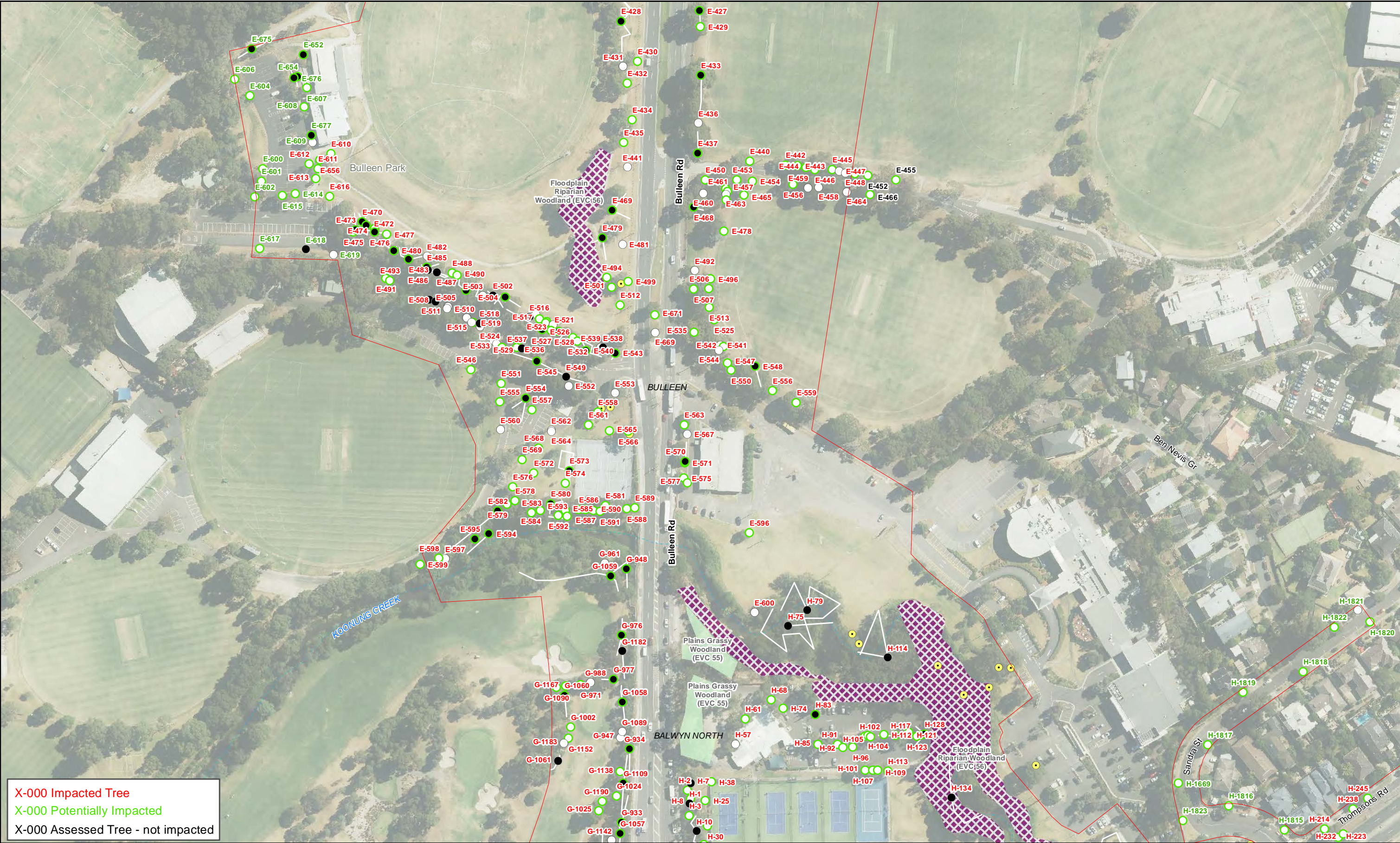


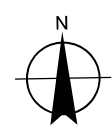
G:\31\35006\GIS\Maps\Working\Specialist Submission\EES\Ecology\3135006_Tree_Location_Plans_A3L_Rev1.mxd

© 2019. Whilst every care has been taken to prepare this map, GHD (and DATA CUSTODIAN) make no representations or warranties about its accuracy, reliability, completeness or suitability for any particular purpose and cannot accept liability and responsibility of any kind (whether in contract, tort or otherwise) for any expenses, losses, damages and/or costs (including indirect or consequential damage) which are or may be incurred by any party as a result of the map being inaccurate, incomplete or unsuitable in any way and for any reason.

Data source: CIP Imagery - DELWP - 2018 | Roads, Watercourses - Vicmap - 2018 | Construction footprint, No Go Zones, EVC Vegetation mapping - GHD/AECOM - 2018 | Arboriculture Tree points/lines - Landscape Dept - 2018. Created by:trighetti



Paper Size A3
0 20 40 60 80
Metres
Map Projection: Transverse Mercator
Horizontal Datum: GDA 1994
Grid: GDA 1994 MGA Zone 55

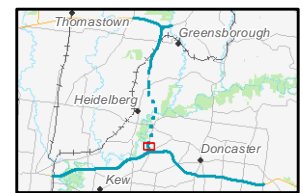


Legend

- Project boundary - surface
- Tree - Group (MLTV)
- Tree - Single
- Tree - Group

- Tree - Single (MLTV)
- Tree - Single
- Scattered Trees (RevC)

- Vegetation Assessed EVC (30/11/2018)
- Floodplain Riparian Woodland (56)
- Plains Grassy Woodland (55)



North East Link Project
Environment Effects Statement (EES)

Appendix C: Tree Location Plan

Job Number 31-35006
Revision 1
Date 01 Mar 2019





X-000 Impacted Tree
X-000 Potentially Impacted
X-000 Assessed Tree - not impacted

Paper Size A3

0 20 40 60 80

Metres

Map Projection: Transverse Mercator
Horizontal Datum: GDA 1994
Grid: GDA 1994 MGA Zone 55

N

Legend

<div></div> Project boundary - surface	<div></div> Tree - Single (MLTV)	Vegetation Assessed EVC (30/11/2018)	<div></div> Riparian Woodland (641)
<div></div> Tree - Group (MLTV)	<div></div> Tree - Single	<div></div> Floodplain Riparian Woodland (56)	
<div></div> Tree - Group	<div></div> Scattered Trees (RevC)	<div></div> Plains Grassy Woodland (55)	

North East Link Project
Environment Effects Statement (EES)

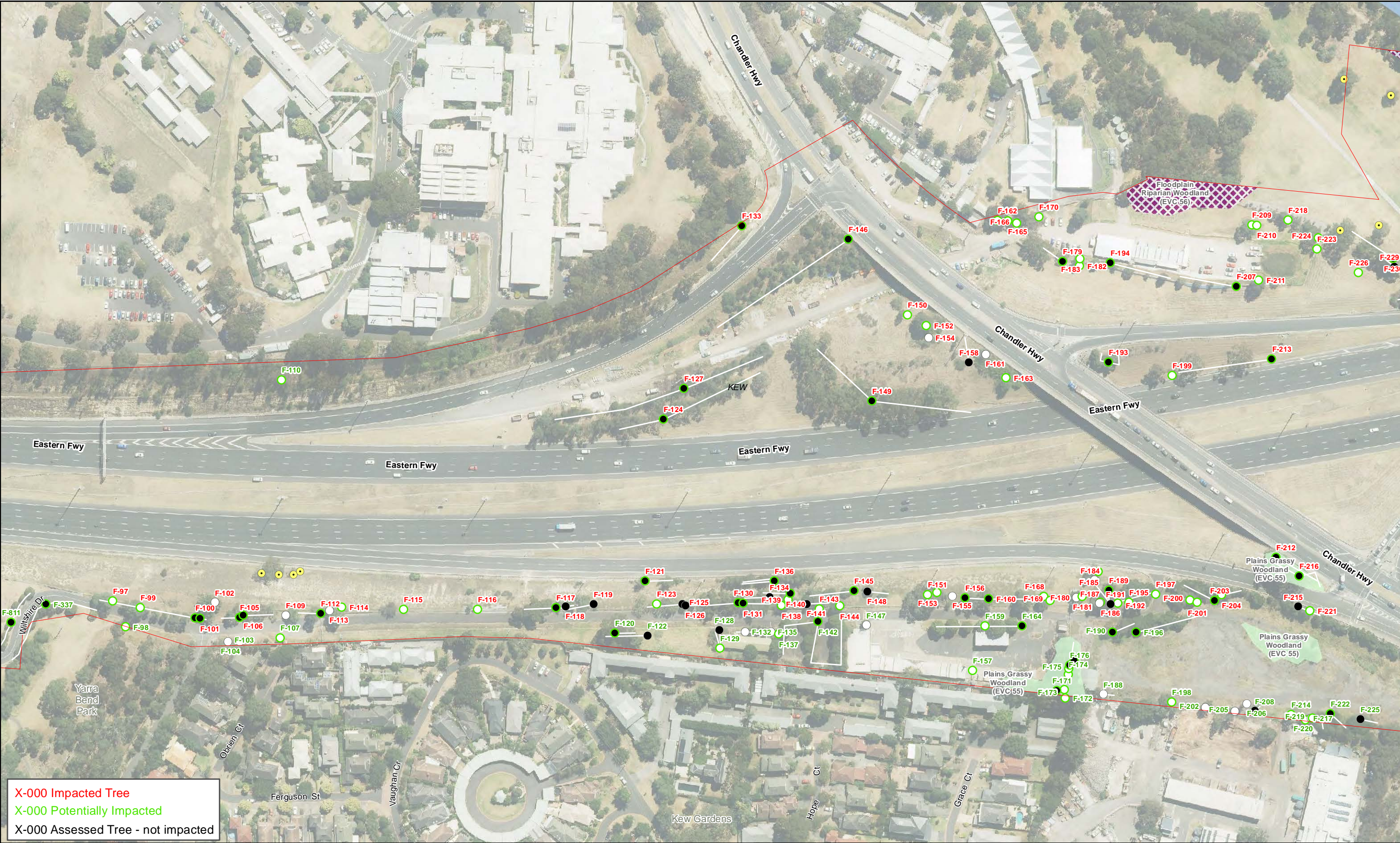
Appendix C:
Tree Location Plan

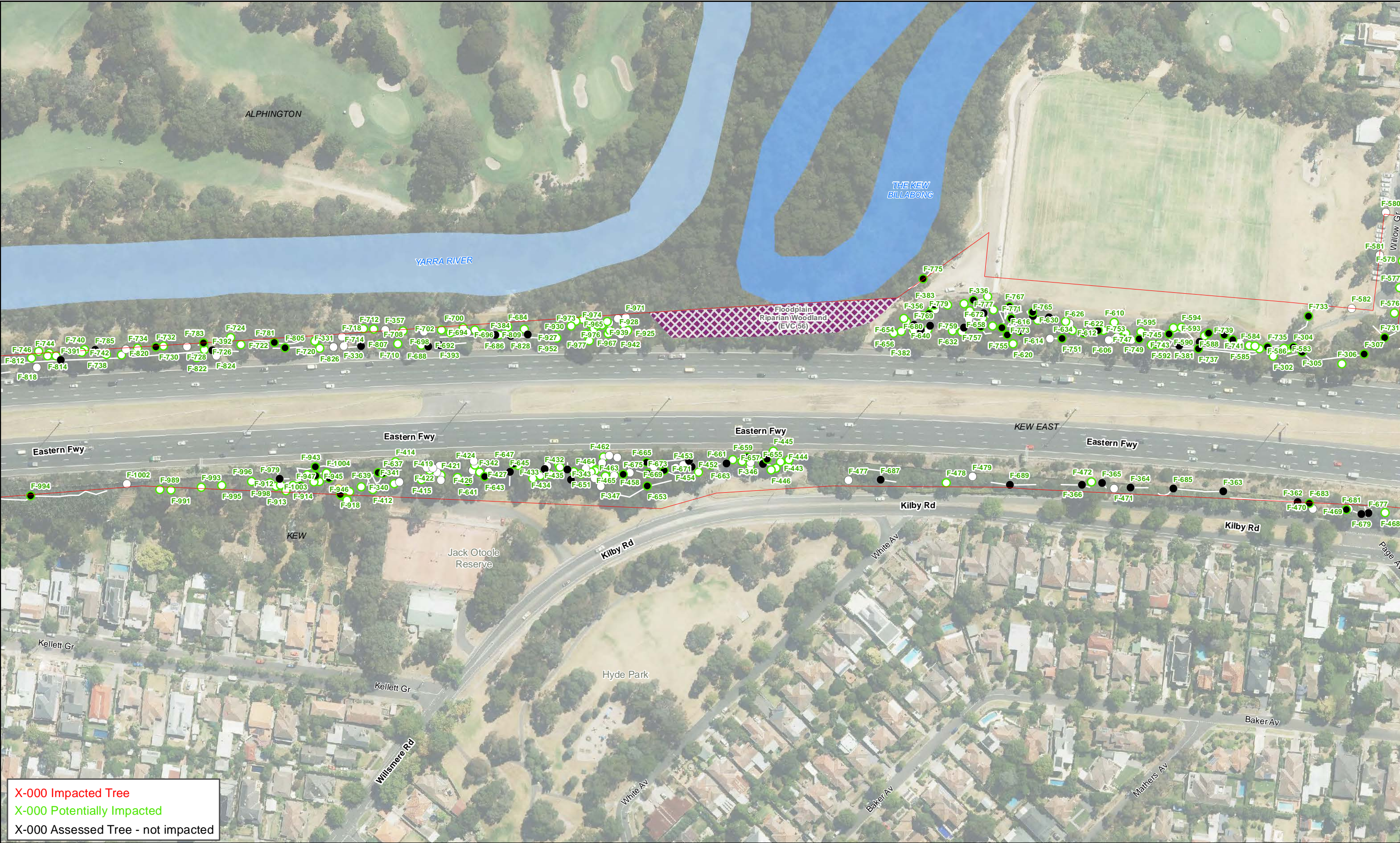
Job Number 31-35006
Revision 1
Date 01 Mar 2019

180 Lonsdale Street Melbourne VIC 3000 Australia T 61 3 8687 8000 F 61 3 8687 8111 E melmail@ghd.com W www.ghd.com









G:\31\35006\GIS\Maps\Working\Specialist Submission\EES\Ecology\3135006_Tree_Location_Plans_A3L_Rev1.mxd

© 2019. Whilst every care has been taken to prepare this map, GHD (and DATA CUSTODIAN) make no representations or warranties about its accuracy, reliability, completeness or suitability for any particular purpose and cannot accept liability and responsibility of any kind (whether in contract, tort or otherwise) for any expenses, losses, damages and/or costs (including indirect or consequential damage) which are or may be incurred by any party as a result of the map being inaccurate, incomplete or unsuitable in any way and for any reason.

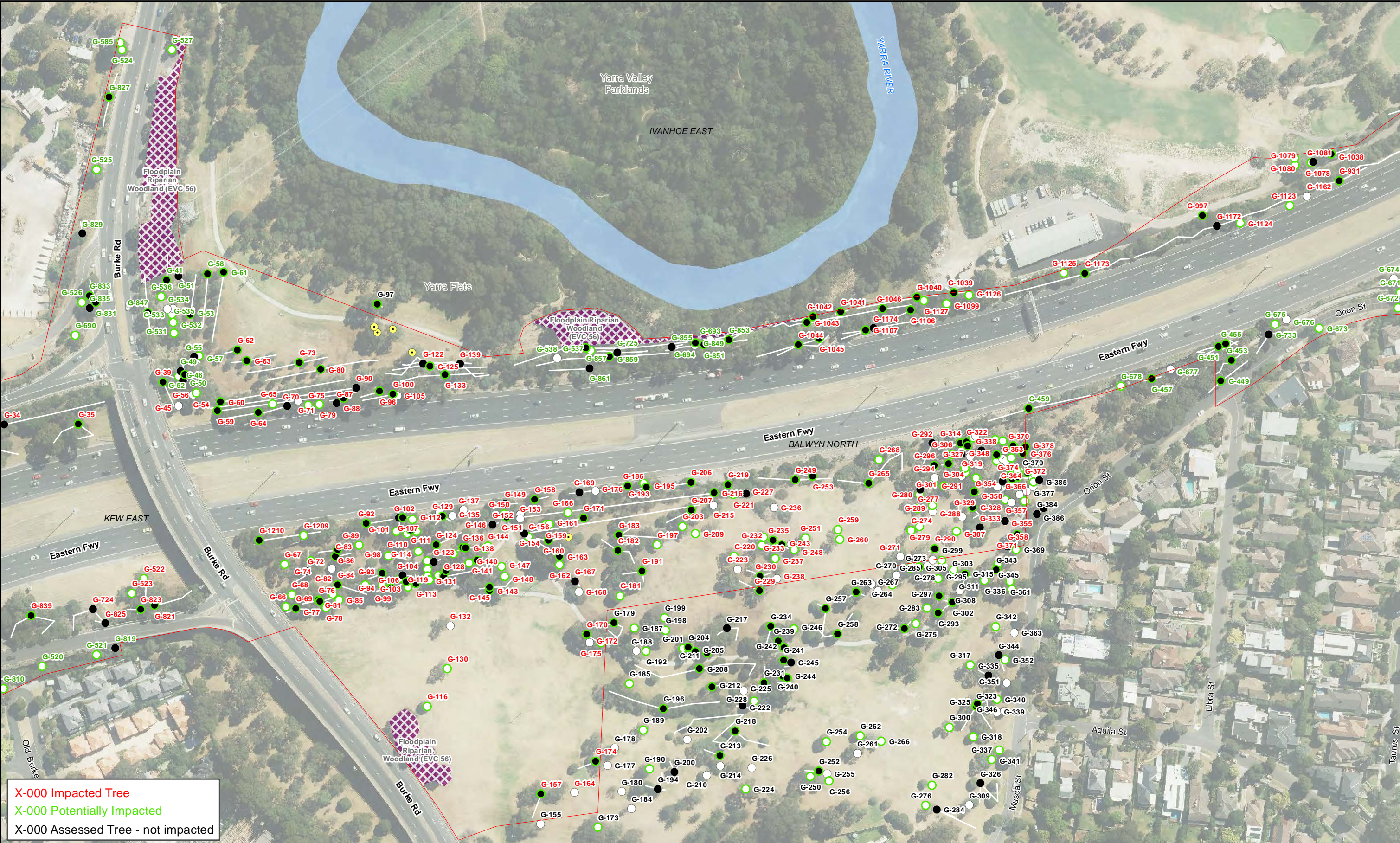
Data source: CIP Imagery - DELWP - 2018 | Roads, Watercourses - Vicmap - 2018 | Construction footprint, No Go Zones, EVC Vegetation mapping - GHD/AECOM - 2018 | Arboriculture Tree points/lines - Landscape Dept - 2018. Created by:trighetti

180 Lonsdale Street Melbourne VIC 3000 Australia T 61 3 8687 8000 F 61 3 8687 8111 E melmail@ghd.com W www.ghd.com

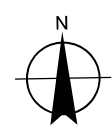




G:\31\35006\GIS\Maps\Working\Specialist Submission\EES\Ecology\3135006_Tree_Location_Plans_A3L_Rev1.mxd
© 2019. Whilst every care has been taken to prepare this map, GHD (and DATA CUSTODIAN) make no representations or warranties about its accuracy, reliability, completeness or suitability for any particular purpose and cannot accept liability and responsibility of any kind (whether in contract, tort or otherwise) for any expenses, losses, damages and/or costs (including indirect or consequential damage) which are or may be incurred by any party as a result of the map being inaccurate, incomplete or unsuitable in any way and for any reason.
Data source: CIP Imagery - DELWP - 2018 | Roads, Watercourses - Vicmap - 2018 | Construction footprint, No Go Zones, EVC Vegetation mapping - GHD/AECOM - 2018 | Arboriculture Tree points/lines - Landscape Dept - 2018. Created by:trighetti

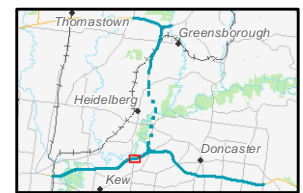


Paper Size A3
0 20 40 60 80
Metres
Map Projection: Transverse Mercator
Horizontal Datum: GDA 1994
Grid: GDA 1994 MGA Zone 55



Legend

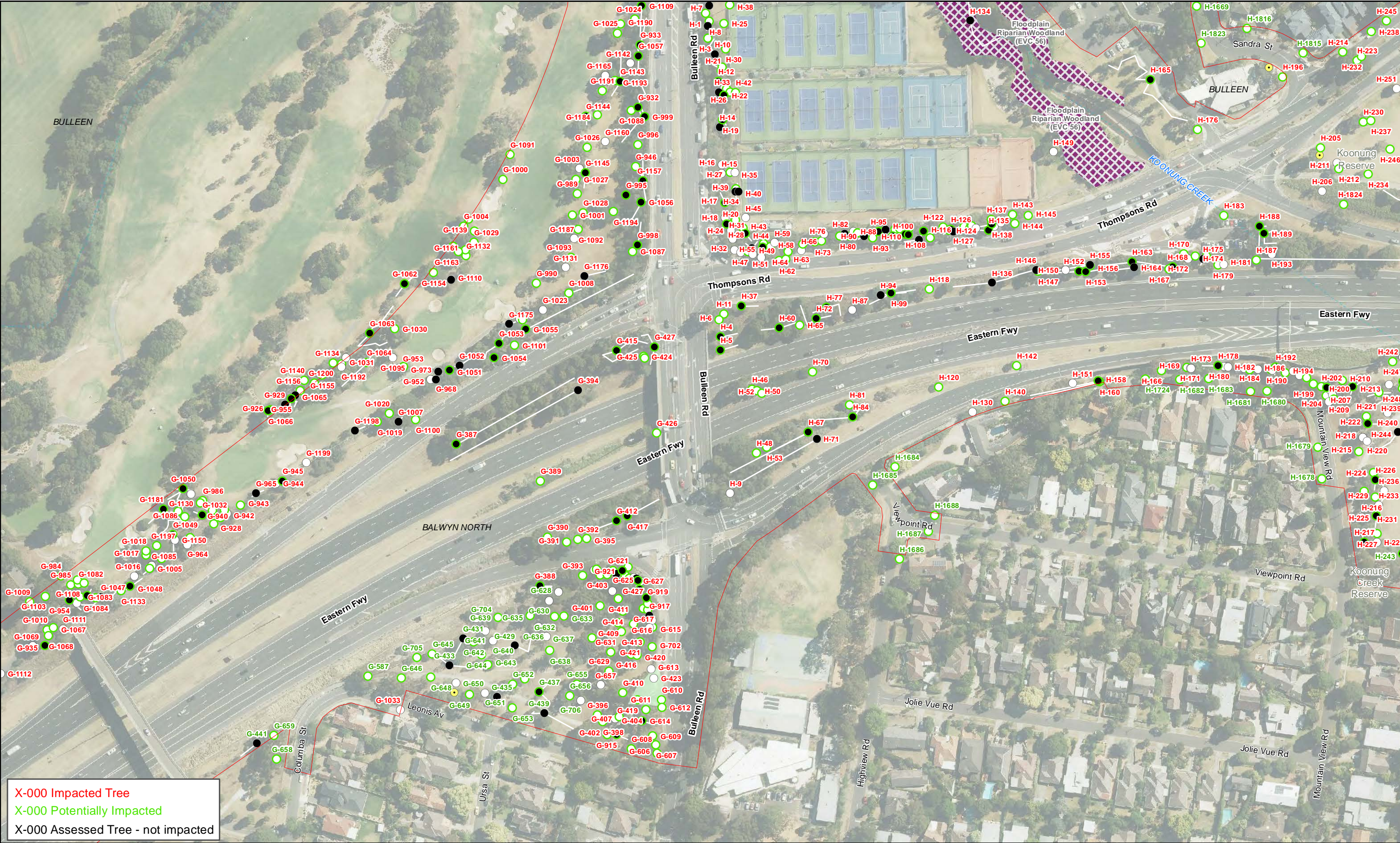
- Project boundary - surface
- Tree - Single (MLTV)
- Tree - Group (MLTV)
- Tree - Single
- Tree - Group
- Scattered Trees (RevC)
- Vegetation Assessed EVC (30/11/2018)
- Floodplain Riparian Woodland (56)



North East Link Project
Environment Effects Statement (EES)

Job Number 31-35006
Revision 1
Date 01 Mar 2019

Appendix C:
Tree Location Plan



Paper Size A3

0 20 40 60 80

Metres

Map Projection: Transverse Mercator
Horizontal Datum: GDA 1994
Grid: GDA 1994 MGA Zone 55

Legend

	Project boundary - surface		Tree - Single (MLTV)		Floodplain Riparian Woodland (56)
	Tree - Group (MLTV)		Tree - Single		Plains Grassy Woodland (55)
	Tree - Group		Scattered Trees (RevC)		

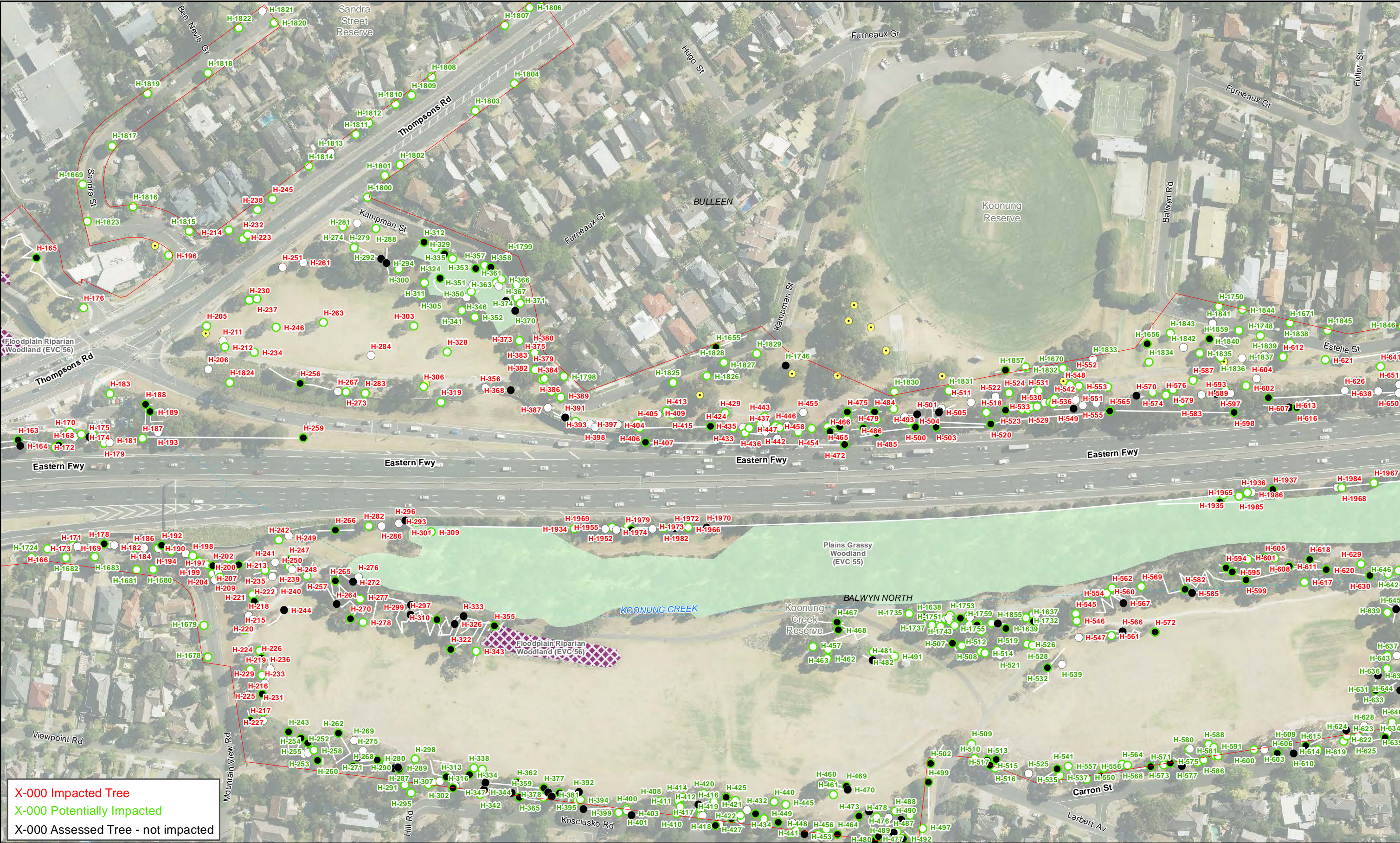
Thomastown Greensborough
Heidelberg
Doncaster
Kew

NORTH EAST LINK PROJECT

North East Link Project
Environment Effects Statement (EES)

Appendix C:
Tree Location Plan

Job Number 31-35006
Revision 1
Date 01 Mar 2019





Paper Size A3

0 20 40 60 80

Metres

Map Projection: Transverse Mercator
Horizontal Datum: GDA 1994
Grid: GDA 1994 MGA Zone 55

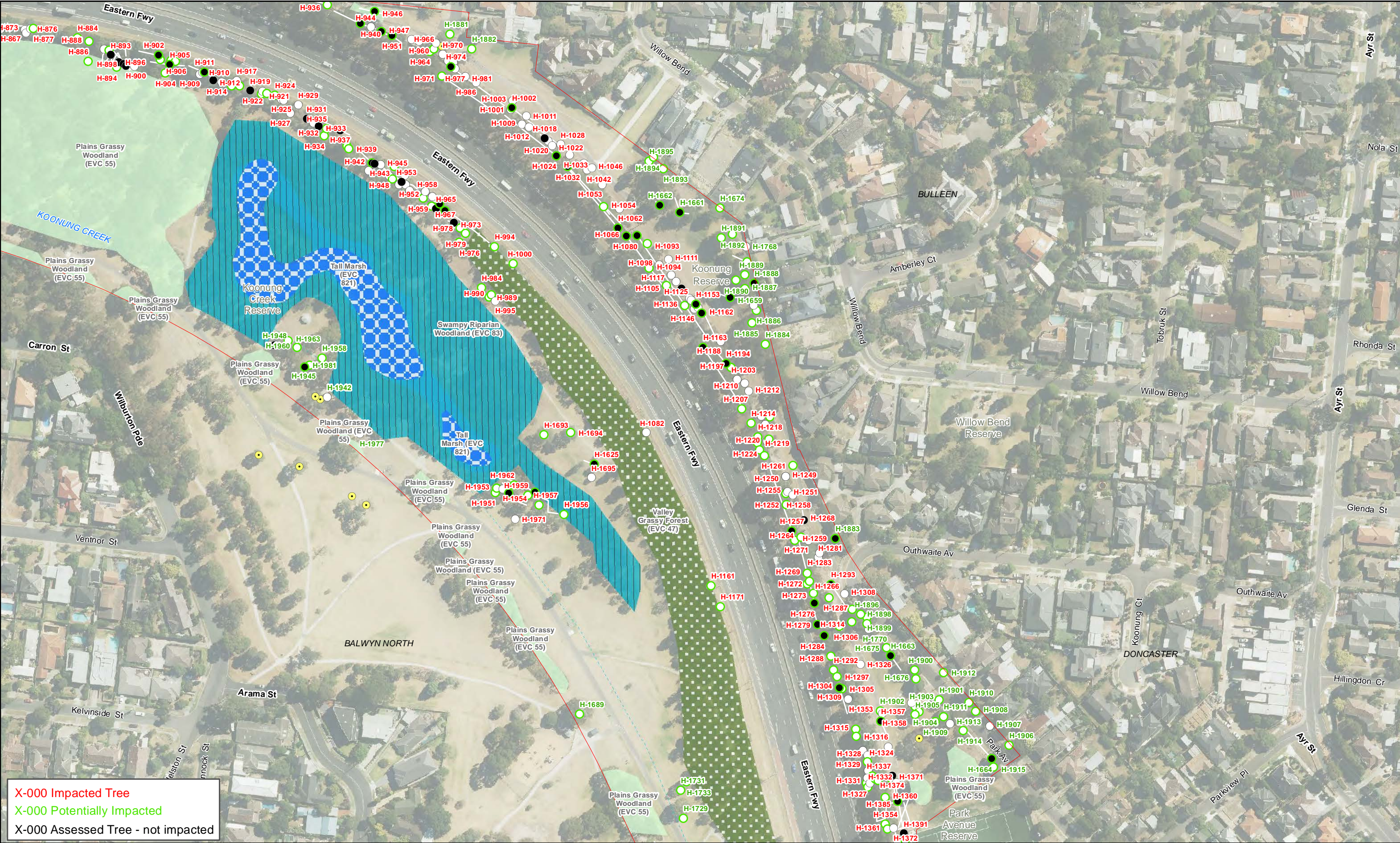
Legend

<div></div> Project boundary - surface	<div></div> Tree - Single (MLTV)	Vegetation Assessed EVC (30/11/2018)	<div></div> Tall Marsh (821)
<div></div> Tree - Group (MLTV)	<div></div> Tree - Single	<div></div> Plains Grassy Woodland (55)	<div></div> Valley Grassy Forest (47)
<div></div> Tree - Group	<div></div> Scattered Trees (RevC)	<div></div> Swampy Riparian Woodland (83)	

North East Link Project
Environment Effects Statement (EES)

Appendix C:
Tree Location Plan

Job Number | 31-35006
Revision | 1
Date | 01 Mar 2019

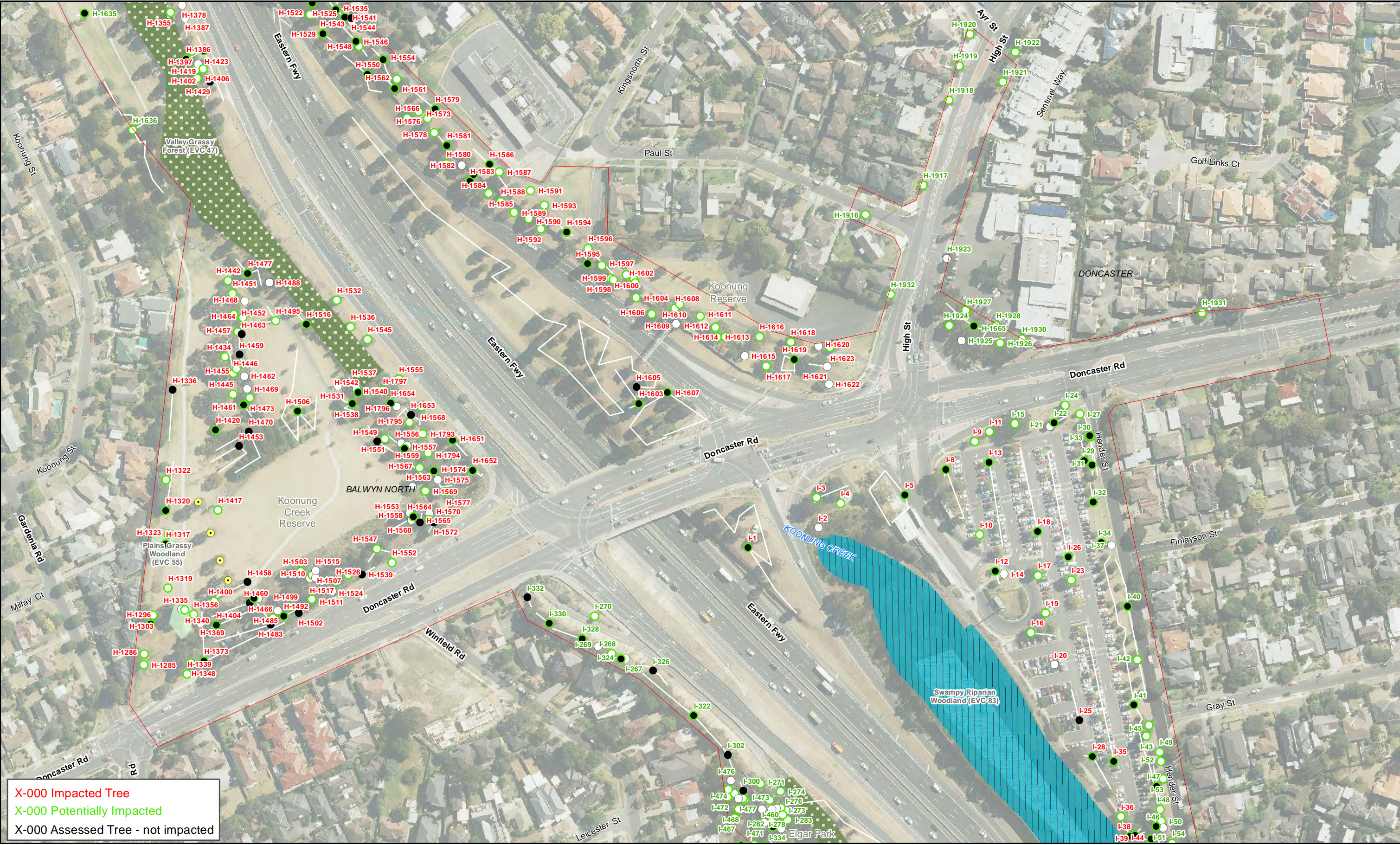


G:\31\35006\GIS\Maps\Working\Specialist Submission\EES\Ecology\3135006_Tree_Location_Plans_A3L_Rev1.mxd

© 2019. Whilst every care has been taken to prepare this map, GHD (and DATA CUSTODIAN) make no representations or warranties about its accuracy, reliability, completeness or suitability for any particular purpose and cannot accept liability and responsibility of any kind (whether in contract, tort or otherwise) for any expenses, losses, damages and/or costs (including indirect or consequential damage) which are or may be incurred by any party as a result of the map being inaccurate, incomplete or unsuitable in any way and for any reason.

Data source: CIP Imagery - DELWP - 2018 | Roads, Watercourses - Vicmap - 2018 | Construction footprint, No Go Zones, EVC Vegetation mapping - GHD/AECOM - 2018 | Arboriculture Tree points/lines - Landscape Dept - 2018. Created by:trighetti



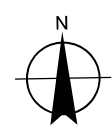
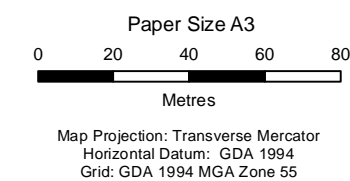


G:\31\35006\GIS\Maps\Working\Specialist Submission\EES\Ecology\3135006_Tree_Location_Plans_A3L_Rev1.mxd

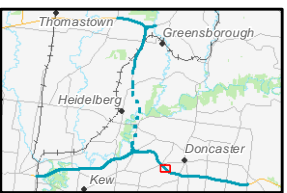
© 2019. Whilst every care has been taken to prepare this map, GHD (and DATA CUSTODIAN) make no representations or warranties about its accuracy, reliability, completeness or suitability for any particular purpose and cannot accept liability and responsibility of any kind (whether in contract, tort or otherwise) for any expenses, losses, damages and/or costs (including indirect or consequential damage) which are or may be incurred by any party as a result of the map being inaccurate, incomplete or unsuitable in any way and for any reason.

Data source: CIP Imagery - DELWP - 2018 | Roads, Watercourses - Vicmap - 2018 | Construction footprint, No Go Zones, EVC Vegetation mapping - GHD/AECOM - 2018 | Arboriculture Tree points/lines - Landscape Dept - 2018. Created by:trighetti

180 Lonsdale Street Melbourne VIC 3000 Australia T 61 3 8687 8000 F 61 3 8687 8111 E melmail@ghd.com W www.ghd.com



- Legend**
- | | | | |
|----------------------------|------------------------|---|---------------------------|
| Project boundary - surface | Tree - Single (MLTV) | Vegetation Assessed EVC (30/11/2018) | Valley Grassy Forest (47) |
| Tree - Group (MLTV) | Tree - Single | Plains Grassy Woodland (55) | |
| Tree - Group | Scattered Trees (RevC) | Swampy Riparian Woodland (83) | |



North East Link Project
Environment Effects Statement (EES)

Appendix C:
Tree Location Plan

Job Number | 31-35006
Revision | 1
Date | 01 Mar 2019

Page 52 of 64



Paper Size A3

0 20 40 60 80

Metres

Map Projection: Transverse Mercator
Horizontal Datum: GDA 1994
Grid: GDA 1994 MGA Zone 55

Legend

Project boundary - surface	Scattered Trees (RevC)	Swampy Woodland (937)
Tree - Group (MLTV)	Vegetation Assessed EVC (30/11/2018)	Tall Marsh (821)
Tree - Group	Creepline Herb-rich Woodland (164)	Valley Grassy Forest (47)
Tree - Single (MLTV)	Plains Grassy Woodland (55)	
Tree - Single	Swampy Riparian Woodland (83)	

North East Link Project
Environment Effects Statement (EES)

Appendix C:
Tree Location Plan

Job Number 31-35006
Revision 1
Date 01 Mar 2019



G:\31\35006\GIS\Maps\Working\Specialist Submission\EES\Ecology\3135006_Tree_Location_Plans_A3L_Rev1.mxd

© 2019. Whilst every care has been taken to prepare this map, GHD (and DATA CUSTODIAN) make no representations or warranties about its accuracy, reliability, completeness or suitability for any particular purpose and cannot accept liability and responsibility of any kind (whether in contract, tort or otherwise) for any expenses, losses, damages and/or costs (including indirect or consequential damage) which are or may be incurred by any party as a result of the map being inaccurate, incomplete or unsuitable in any way and for any reason.

Data source: CIP Imagery - DELWP - 2018 | Roads, Watercourses - Vicmap - 2018 | Construction footprint, No Go Zones, EVC Vegetation mapping - GHD/AECOM - 2018 | Arboriculture Tree points/lines - Landscape Dept - 2018. Created by:trighetti

180 Lonsdale Street Melbourne VIC 3000 Australia T 61 3 8687 8000 F 61 3 8687 8111 E melmail@ghd.com W www.ghd.com





Paper Size A3

0 20 40 60 80

Metres

Map Projection: Transverse Mercator
Horizontal Datum: GDA 1994
Grid: GDA 1994 MGA Zone 55

N

Legend

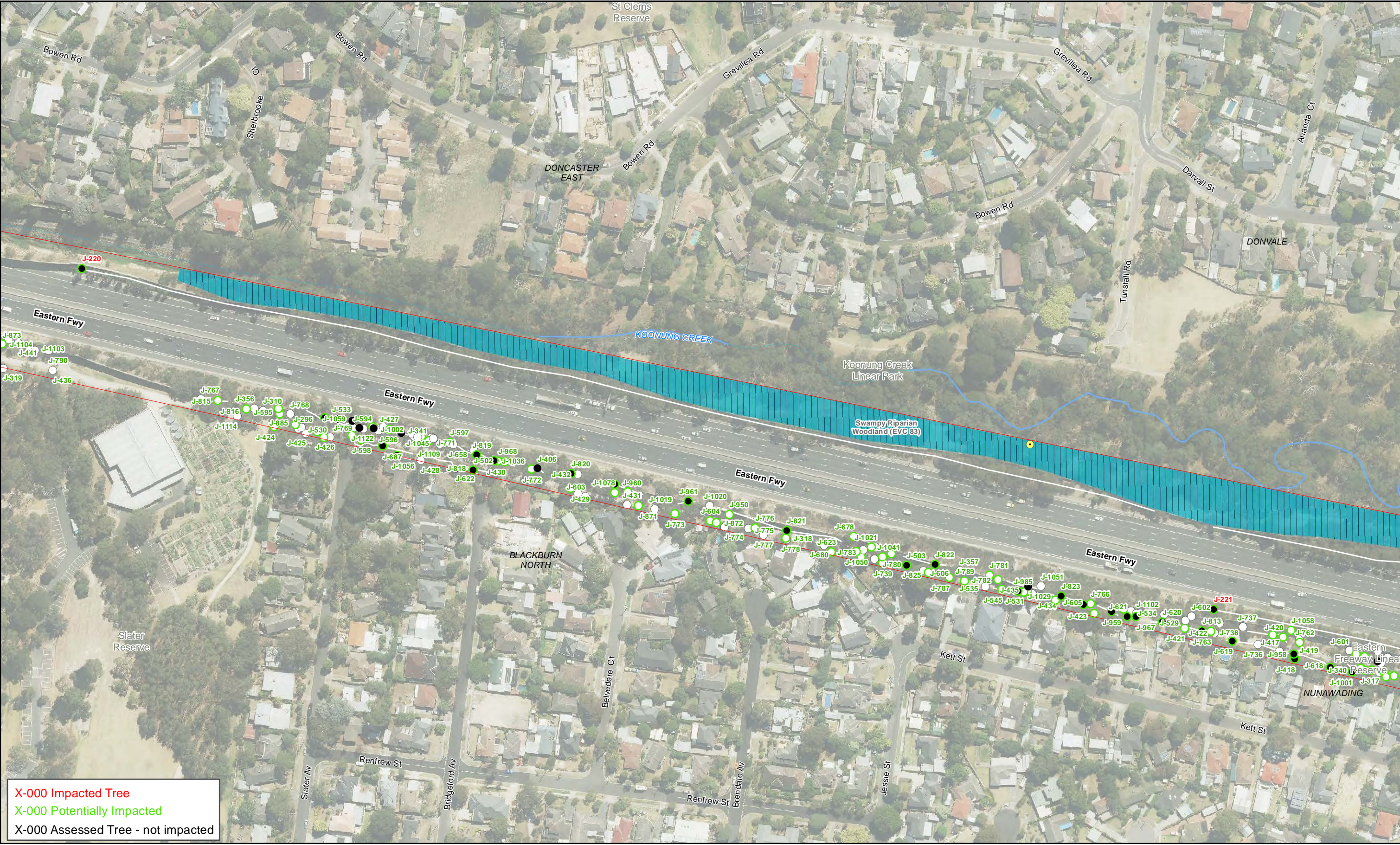
Project boundary - surface	Tree - Single (MLTV)	Vegetation Assessed EVC (30/11/2018)	Tall Marsh (821)
Tree - Group (MLTV)	Tree - Single	Swamp Scrub (EVC 53)	Valley Grassy Forest (47)
Tree - Group	Scattered Trees (RevC)	Swampy Riparian Woodland (83)	

North East Link Project
Environment Effects Statement (EES)

Appendix C:
Tree Location Plan

Job Number 31-35006
Revision I
Date 01 Mar 2019

180 Lonsdale Street Melbourne VIC 3000 Australia T 61 3 8687 8000 F 61 3 8687 8111 E melmail@ghd.com W www.ghd.com



Paper Size A3

0 20 40 60 80

Metres

Map Projection: Transverse Mercator
Horizontal Datum: GDA 1994
Grid: GDA 1994 MGA Zone 55

N

Legend

	Project boundary - surface		Tree - Single (MLTV)	Vegetation Assessed EVC (30/11/2018)		Swampy Riparian Woodland (83)
	Tree - Group (MLTV)		Tree - Single			
	Tree - Group		Scattered Trees (RevC)			

North East Link Project
Environment Effects Statement (EES)

**Appendix C:
Tree Location Plan**

Job Number	31-35006
Revision	1
Date	01 Mar 2019



Paper Size A3

0 20 40 60 80

Metres

Map Projection: Transverse Mercator
Horizontal Datum: GDA 1994
Grid: GDA 1994 MGA Zone 55

Legend

<div></div>	Project boundary - surface	<div></div>	Tree - Single (MLTV)	Vegetation Assessed EVC (30/11/2018)
<div></div>	Tree - Group (MLTV)	<div></div>	Tree - Single	<div></div> Swampy Riparian Woodland (83)
<div></div>	Tree - Group	<div></div>	Scattered Trees (RevC)	

North East Link Project
Environment Effects Statement (EES)

Appendix C:
Tree Location Plan

Job Number 31-35006
Revision 1
Date 01 Mar 2019

180 Lonsdale Street Melbourne VIC 3000 Australia T 61 3 8687 8000 F 61 3 8687 8111 E melmail@ghd.com W www.ghd.com

