



STATE LIBRARY STATION COMMUNITY REFERENCE GROUP

CROSS YARRA PARTNERSHIP
FRIDAY 23 APRIL 2021





STATE LIBRARY STATION COMMUNITY REFERENCE GROUP

Melinda Kelly, State Library Station Stakeholder Engagement Manager, CYP D&C

Mary Parker, Director Communications & Creative, Project Co



Construction partner:



AGENDA

1. Project overview
2. TBM tunnelling update
3. State Library Station update
4. Creative program update

PROJECT OVERVIEW



Presenter: Melinda Kelly





Western Portal

Arden

Parkville

South Kensington

North Melbourne

State Library

Melbourne Central

Flagstaff

Parliament

Town Hall

Southern Cross

Flinders Street

Richmond

Anzac

South Yarra

Eastern Portal

Sunbury Line

Cranbourne / Pakenham Line

ARDEN

- Services building construction is progressing with preparatory works for the façade panel installation underway
- Seven pre-cast brick arches have now been cast, these will be used to construct the station entrance
- Platform works are taking shape in the west box.



West box



Pre-cast arch

PARKVILLE

- Piling works for the Grattan Street west entrance is ongoing with excavation works expected to commence in May
- Excavation for the eastern tunnel ventilation shaft (TVS) and goods lift are ongoing
- Site establishment for the western TVS are continuing until May.



Station box fit out – concourse level

TOWN HALL



Central cavern

- Permanent structure and lining works are taking place within the central cavern. This includes, the installation of waterproofing materials, columns, tie beams and roof beams
- Excavation of the platform rail tunnels has commenced using roadheaders
- Top-down construction works are continuing at the Flinders Quarter site
- Works to construct the permanent walls within the Flinders Link site are underway. This will form a future underground pedestrian connection between the future Town Hall Station and Flinders Street Station
- Station build out works have commenced within the City Square shaft.

ANZAC

- The tunnelling team is working to strip all of the pipes from the completed tunnel, before they can begin disassembling the TBM and bringing the pieces back to Anzac Station through the tunnel
- The Shrine of Remembrance station entrance roof is complete and is now being backfilled
- The next sections of the station's concourse level are being constructed in the northern and southern ends of the station box.



South box concourse slab

TBM TUNNELLING UPDATE



Presenter: Melinda Kelly



TUNNELLING IN THE CBD – PROGRESS UPDATE

- Two of the four tunnel boring machines (TBMs) digging the Metro Tunnel have reached their final destination in Melbourne's CBD, at the Town Hall Station precinct
- TBMs Alice and Meg will complete their final sections of the Metro Tunnel's in coming weeks. This significant milestone will mark the completion of all TBM digging works for the project.



TBM MEG RELAUNCH VIDEO ▶



STATE LIBRARY STATION UPDATE



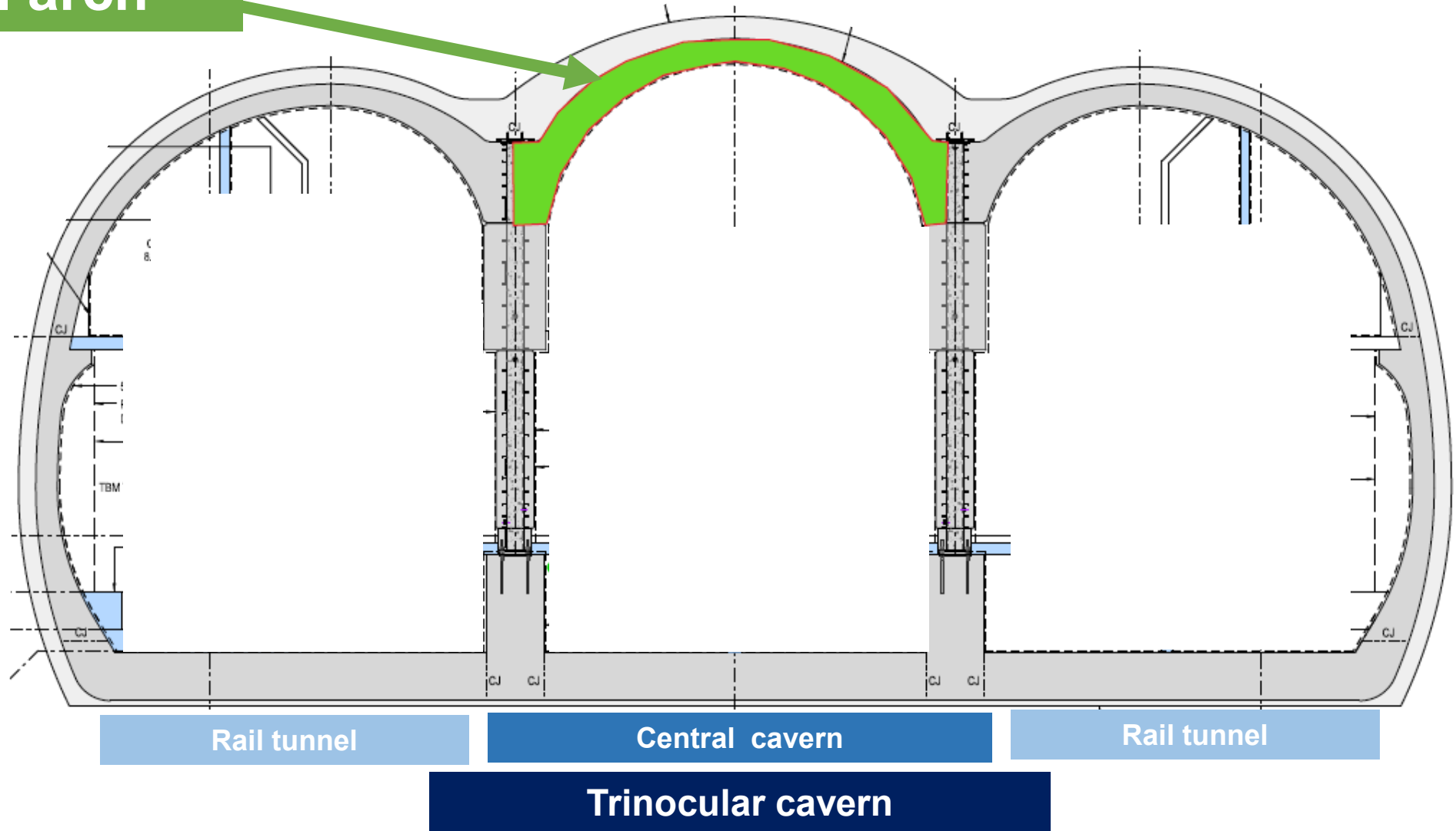
Presenter: Melinda Kelly 



STRUCTURES AND LINING

- The arch of the central cavern will be the main focus of the structures and lining team until the end of June 2021
- Two bespoke station tunnel lining formwork systems (STLF's) are being used to install the concrete along the arch of the central cavern
- A bespoke cage frame lifter will be used to efficiently install pre-fabricated cages along the arch of the central cavern – this system is able to tie 40 tonnes of reinforcement in just over a day.

Central arch



Waterproofing



Cantilevered access platforms

STATION TUNNEL LINING FORMWORK SYSTEMS (STLF)



REINFORCEMENT CARRIER FRAME (RCF)





A 'BECKETT STREET

A'BECKETT STREET SITE UPDATE

Activity	Apr	May	Jun	Jul	Aug	Sep
Central cavern arch lining	—————●					
Platform rail tunnel arch lining			●—————			
Concrete and reinforcement deliveries	—————					



FRANKLIN STREET SITES

FRANKLIN STREET SITES

Activity	Apr	May	Jun	Jul	Aug	Sep
Changes to laydown area (Franklin West)			●—————●			
Tension anchors (Franklin West)	●——●	●—————●				
Waterproofing, deliveries, concrete pours and steel installation (Franklin East/West)						

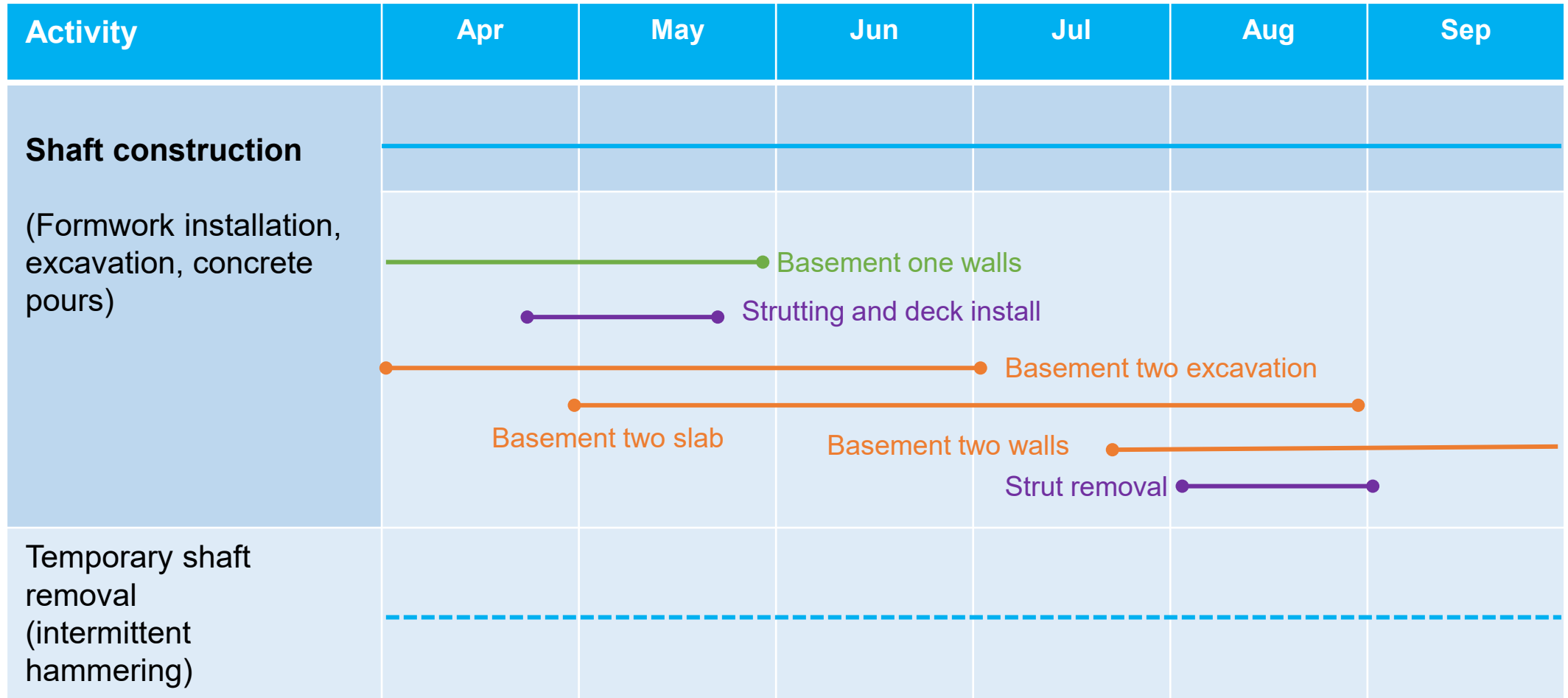
HOURS

- Monday to Sundays, 24 hours



LA TROBE STREET UPDATE

LA TROBE STREET SITE UPDATE



LA TROBE STREET SITE HOURS

Shaft construction works

(Excavation, excavated material removal, steel fixing, concrete pours and deliveries)

- Monday to Fridays, 7am to 10pm
- Saturdays, 7am to 6pm

Steel fixing and excavation beneath ground floor slab

- 10pm to 12am, Monday to Fridays

Concrete finishing works and oversized deliveries

- Monday to Saturdays, 10pm to 7am (as required)

Swanston Street concrete pump operation

- Monday to Sundays, 24 hours (as required)

Little La Trobe Street concrete pump operation

- Monday to Fridays, 7am to 6pm
- Saturdays, 7am to 1pm (as required)

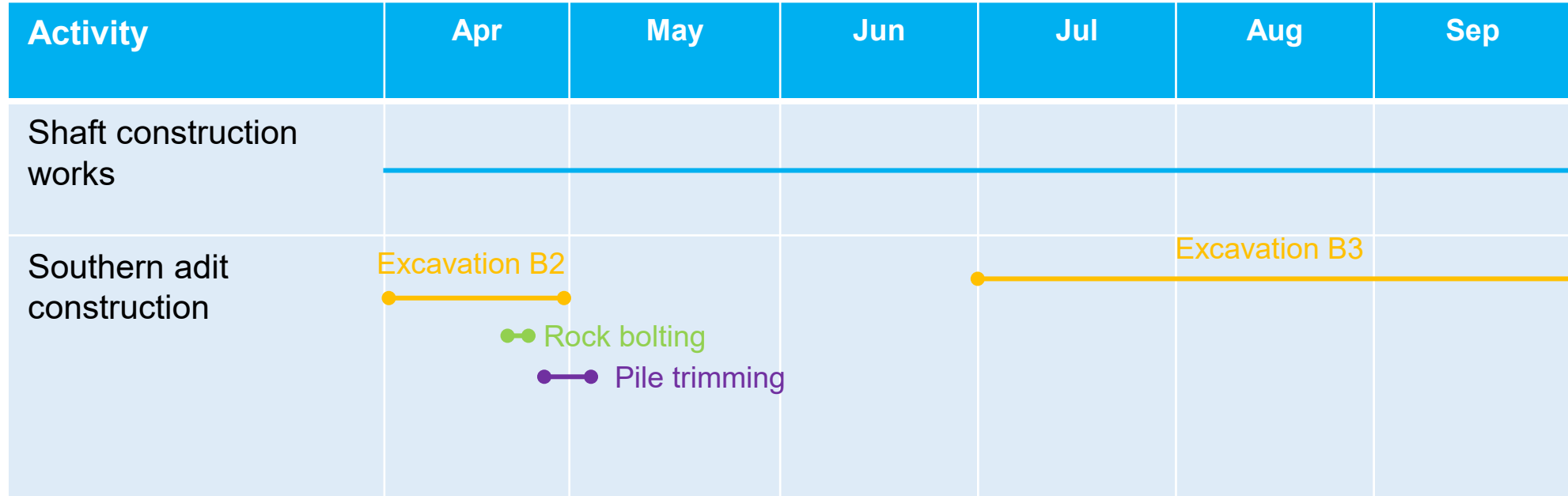


LITTLE LA TROBE STREET UPDATE

Little La Trobe southern adit



LITTLE LA TROBE STREET SITE UPDATE



Shaft and adit construction works

Excavation, excavated material removal, concrete pours, steel fixing, rock bolting, shotcreting, pile trimming and deliveries

- Monday to Fridays, 7am to 10pm
- Saturdays, 7am to 6pm



QUESTIONS





METRO TUNNEL CREATIVE PROGRAM



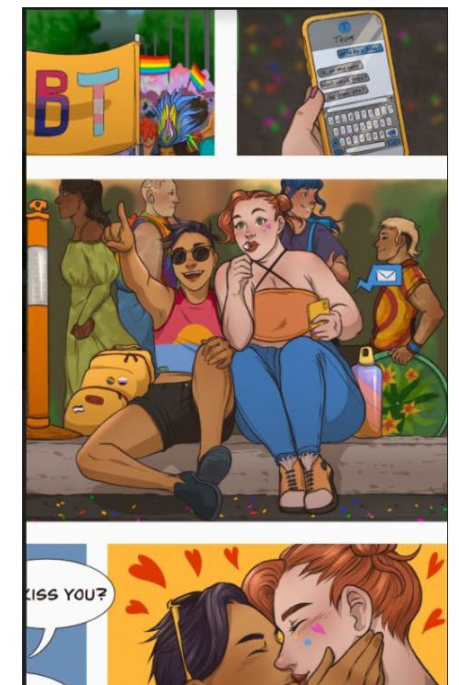
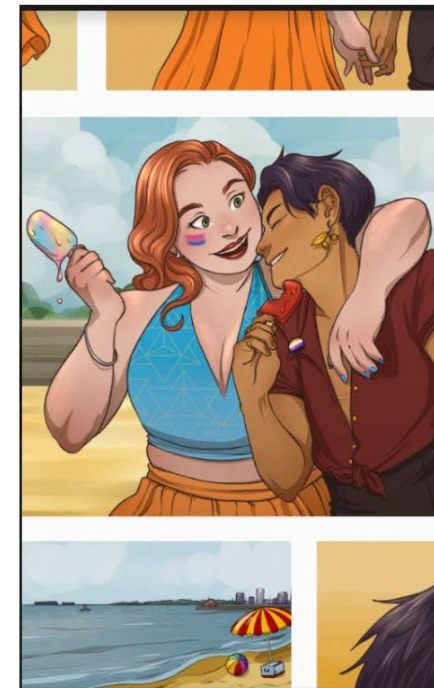
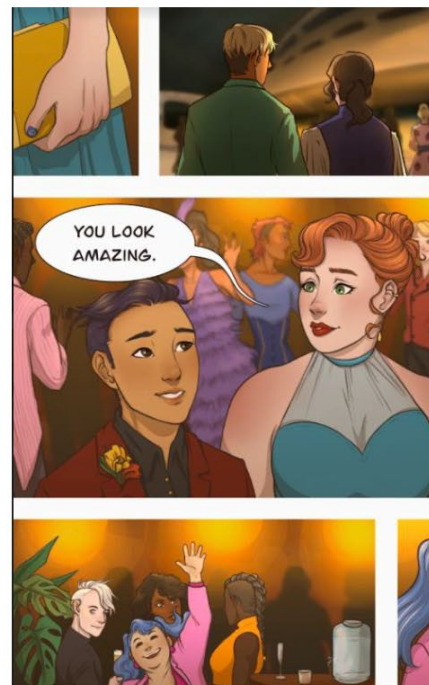
STATE LIBRARY PRECINCT

- Addition of neon flex to provide extra ambient lighting
- Integration of CPTED elements eg CCTV, use of mirrors and sensor lighting
- Activation strategy – Silent disco during Midsumma Festival, Popup runway for Melbourne Fashion Week



MIDSUMMA 'MEMORY LANE'

Franklin St Frames from April 20



SILENT DISCO

May 1 and 8

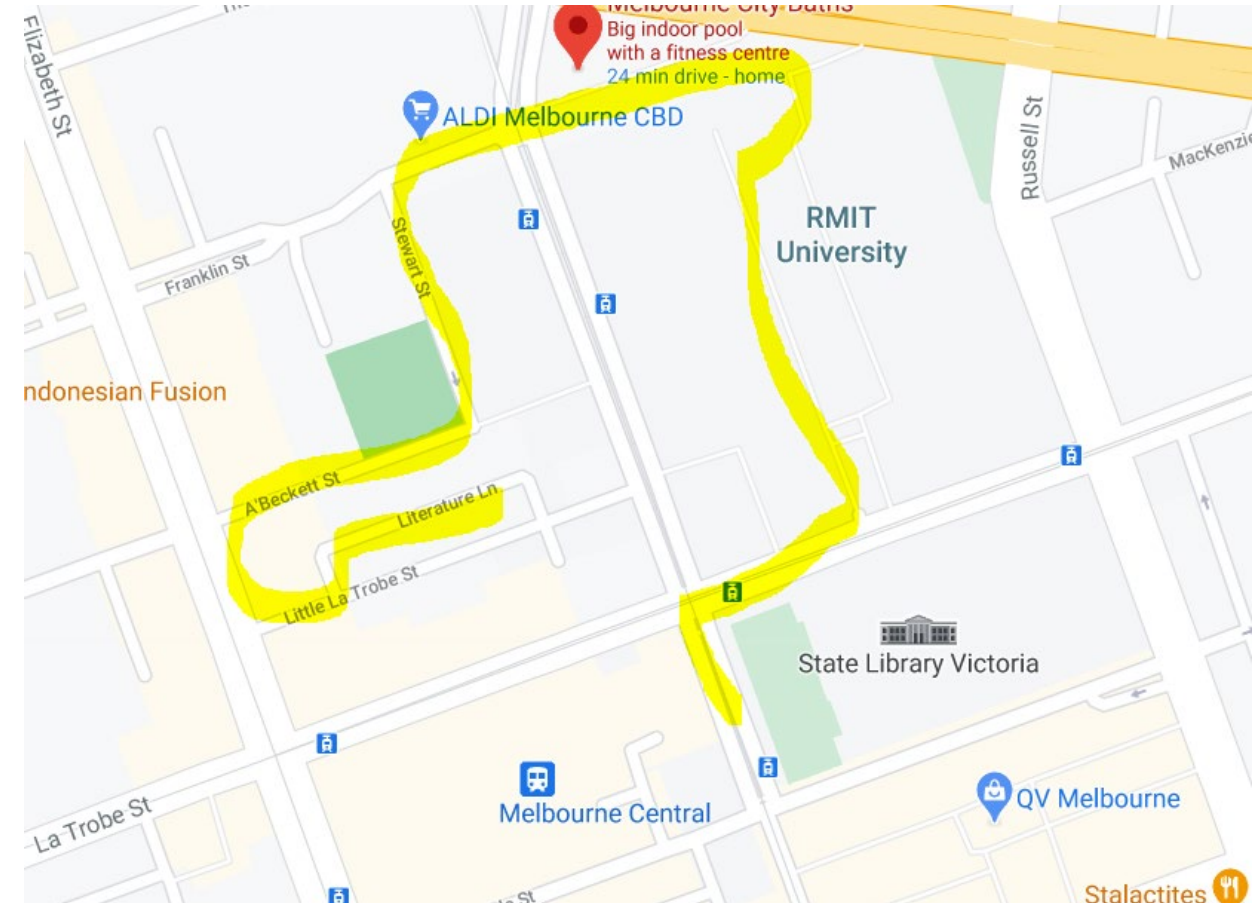


Memory Lane Silent Disco

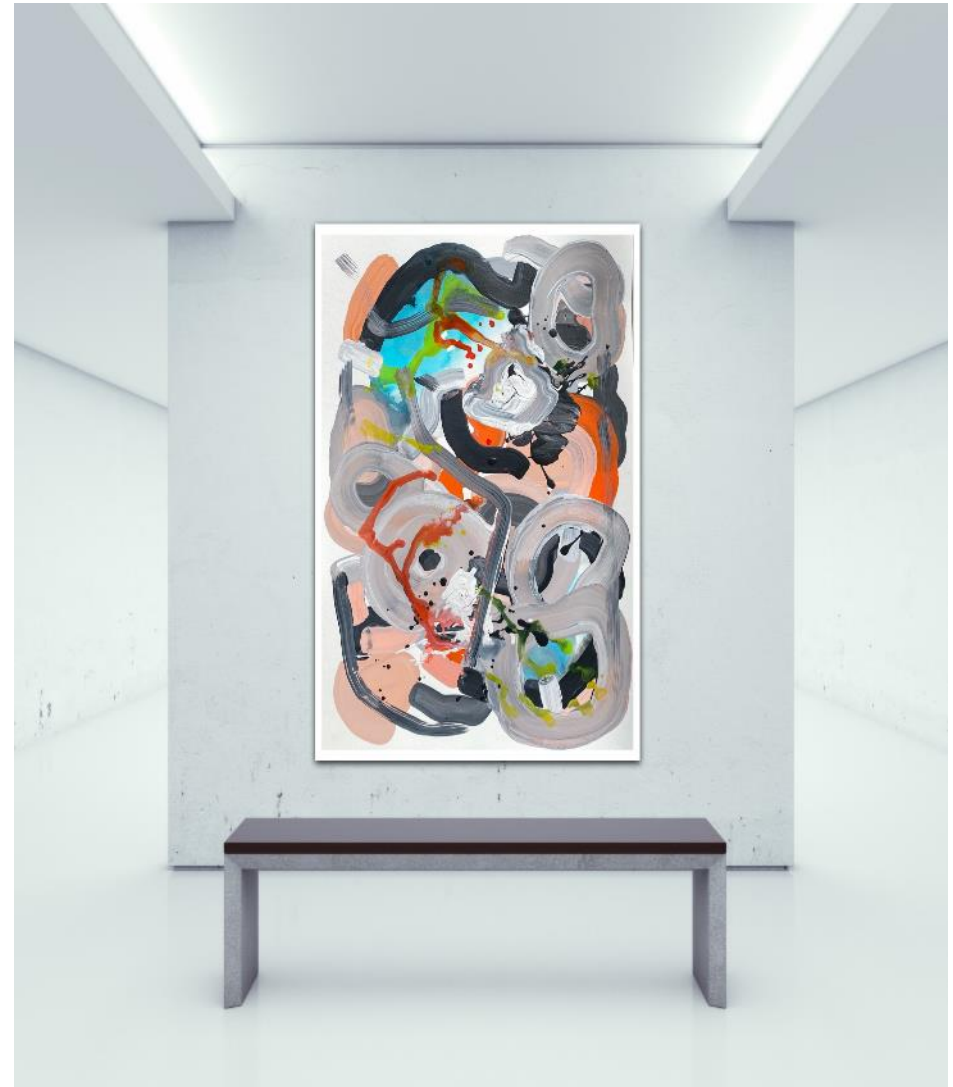
[WALKING TOUR](#) [EVENTS](#)

The Metro Tunnel Creative Program and Guru Dudu take you on a silent disco through the NOLA (North of La Trobe Street) precinct, starting at the State Library.

Headphones (Covid-safe of course) will be provided so you can groove along to a mix of uplifting favourites from the 70s, 80s, 90's & 00s. You'll shimmy past the outdoor exhibition "Memory Lane", part of Midsumma Festival, on Franklin Street, boogie down laneways and sashay in the streets.

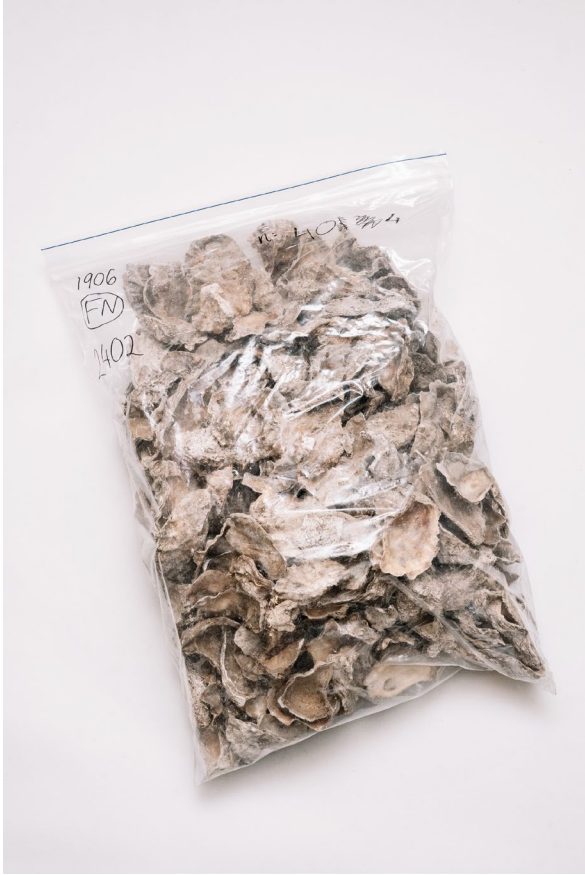


POOLHOUSE CAFÉ
New creative treatment for Franklin St frames



DIG DISCARDS

Craft Vic + RMIT partnerships





TOWN HALL PRECINCT

RONALD EDWARDS PEPPER FOR YIRRAMBOI

City Square: April 19 – May 24



RONALD EDWARDS PEPPER FOR YIRRAMBOI

City Square: April 19 – May 24



The grandson of Dulcie (Dolly) Mullet & Watson Pepper, Ronald Edwards Pepper is a proud Gunnai man.

His family moved from Lake Tyers Mission to Morwell in the 1960s.

Since graduating from Federation University with a Bachelor of Visual and Media Arts in 2017, Ronald has completed several commissions and participated in numerous exhibitions, in Australia and overseas.

Ronald primarily paints in acrylics on canvas, sometimes incorporating ochre into his work. He also enjoys experimenting with non-traditional materials such as neon and glow in the dark paint.



EMERGING FROM DARKNESS

Ronald Edwards Pepper

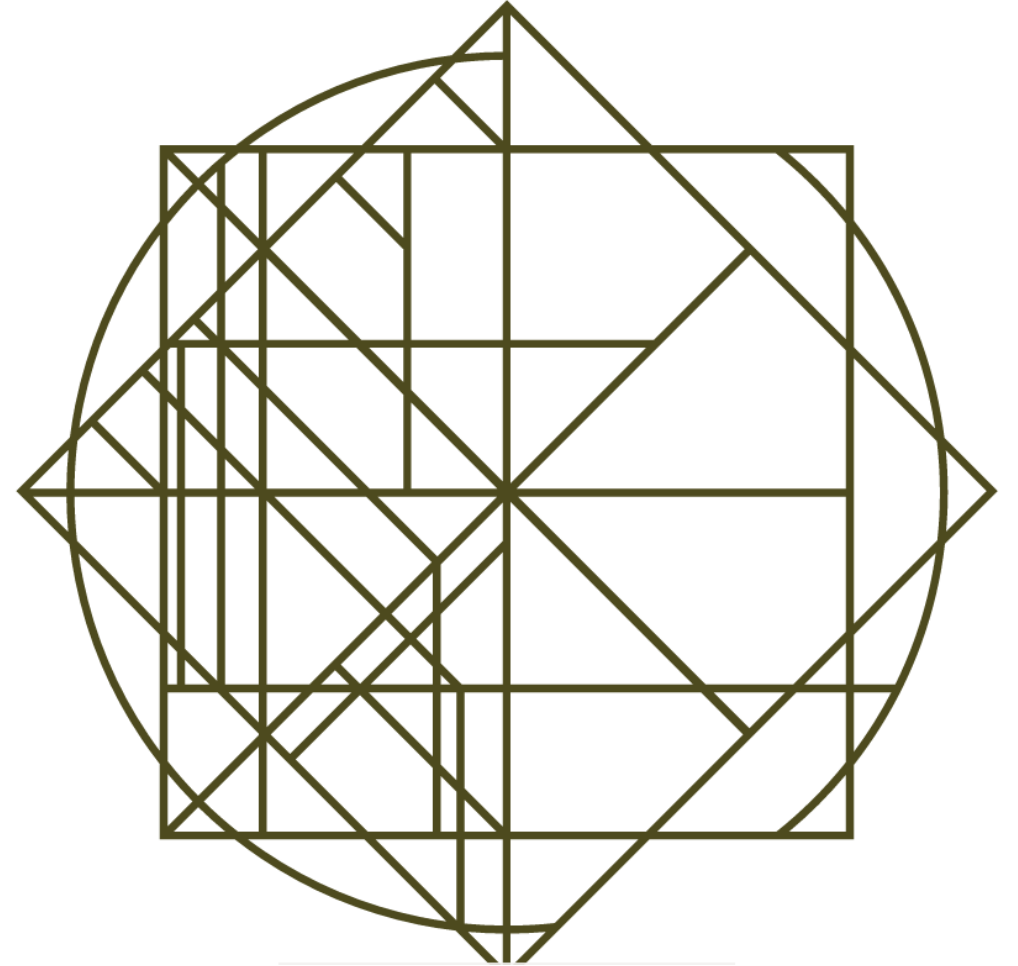


FLINDERS QUARTER AUGMENTED ART WALK

FROM MAY 18



- *Absence of Evidence* by Stanislava Pinchuk
- *The Guardians* by Carla Gottgens
- *A Touch of Climate* by United Make
- *The Parallax of Time* by Anton Hasell
- *Green and Red* by Tracy Sarroff
- *What Lies Beneath* by Dee Smart
- *You Can Find Something Truly Important in an Ordinary Minute* by Jingwen (Jina) He
- *The Duchess and The Butterfly II* by Ann Ryan
- *Portal Glitch* by Sue Beyer
- *Painting a Perfect World* by Jasmine Mansbridge
- *Flutterby* by Vandal
- *Labyrinth* by Sonia Kretschmar



FLINDERS QUARTER AUGMENTED ART WALK

Example of animation



QUESTIONS?