



**REGIONAL  
RAIL REVIVAL**

**GEELONG**

# Fyans Street level crossing removal

## South Geelong to Waurin Ponds Duplication



**\$1 billion**

invested in rail upgrades between South Geelong and Waurin Ponds



**1,300+**  
jobs



**5**

Train services per hour during the peaks, and three per hour between the peaks

*New Fyans Street rail bridge concept image - view from Carr Street*

**Keep informed about works in your area**



Sign up to our email updates  
[regionalrailrevival.vic.gov.au](http://regionalrailrevival.vic.gov.au)



Follow us on Facebook  
[facebook.com/RRRGeelongWarrnambool](https://facebook.com/RRRGeelongWarrnambool)



Australian Government



Authorised by the Victorian Government, 1 Treasury Place, Melbourne



## New Fyans Street rail bridge

The dangerous and congested five-way roundabout at Fyans Street in South Geelong will soon be a thing of the past, with new designs showing a simplified intersection as part of new designs for the Fyans Street level crossing removal.

The new design removes the roundabout and extends Fyans Street to Breakwater Road - improving traffic flow and safety, as well as enhancing the area for residents and businesses.

The new design responds to community feedback calling for greater separation between the Carr Street residential area and the industrial area south of Fyans Street, and for more opportunities for open space and recreation.

Key benefits of the new design include:

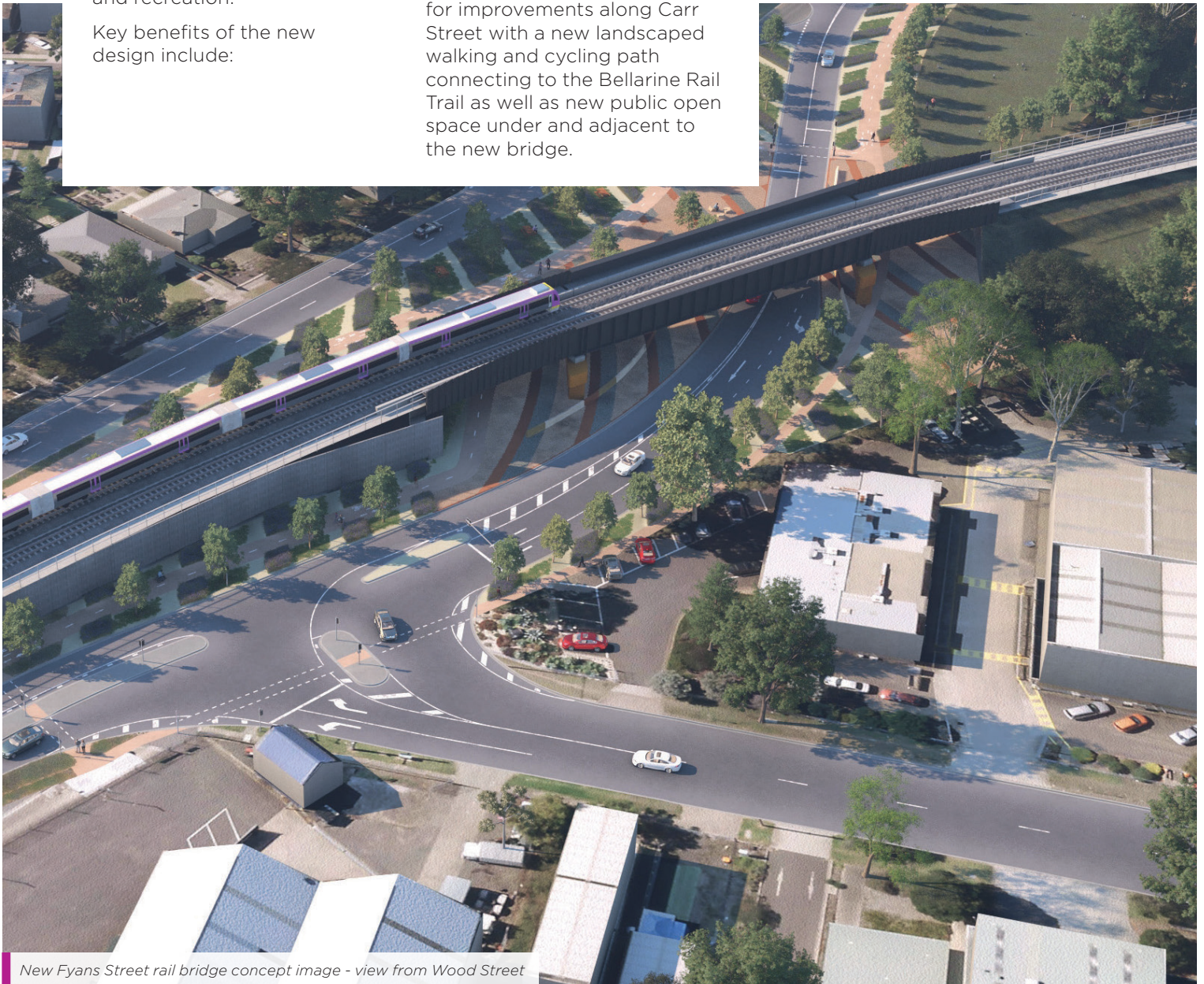
- Roundabout completely removed improving safety and traffic flow
- More green open space, landscaping, and recreational areas
- Separates the Carr St residential area from the industrial area to the south
- Bridge embankment reduced by 300 metres, reducing visual impacts to residents.

The new rail bridge will allow for improvements along Carr Street with a new landscaped walking and cycling path connecting to the Bellarine Rail Trail as well as new public open space under and adjacent to the new bridge.

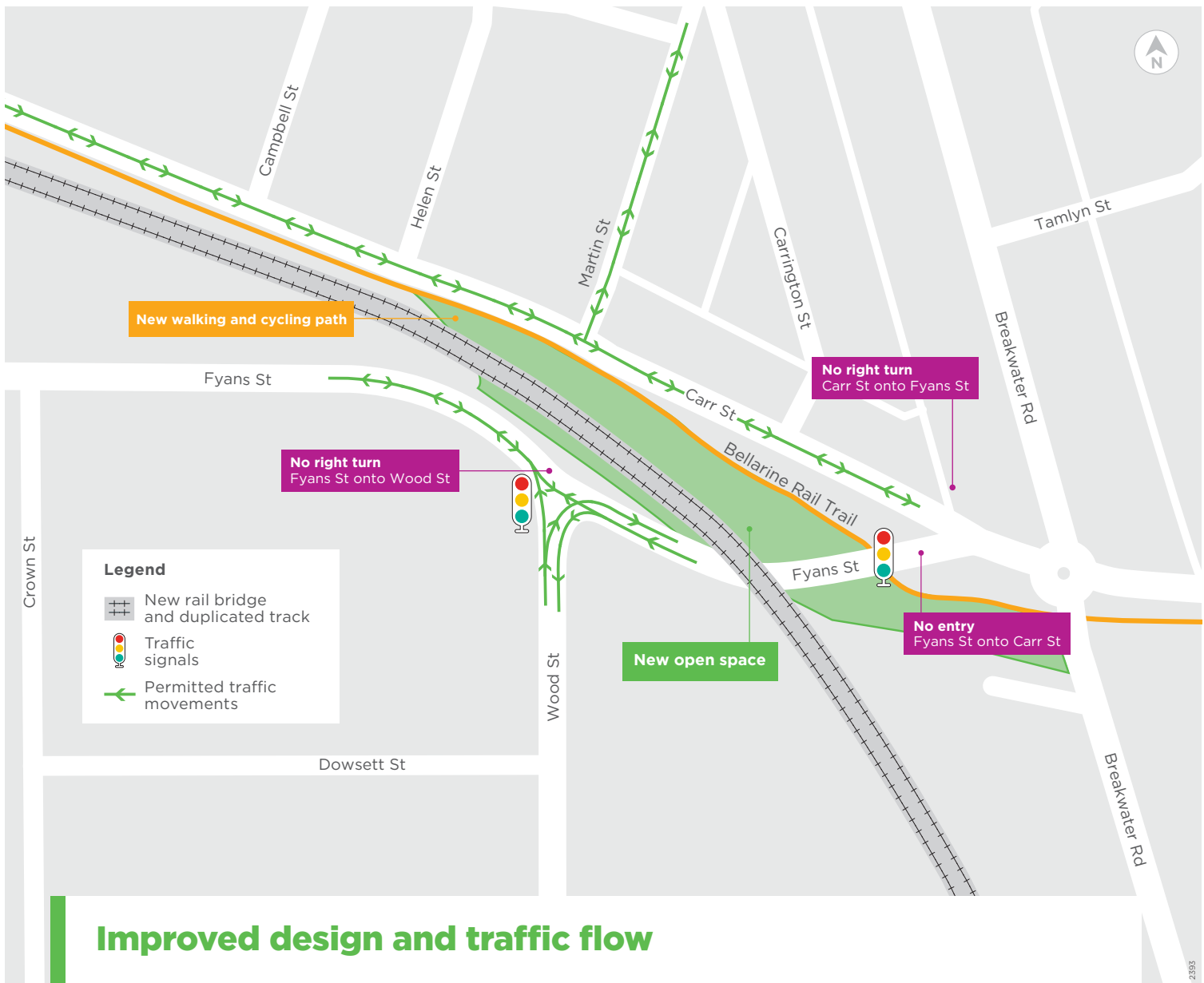
## South Geelong to Waurn Ponds Duplication

The South Geelong to Waurn Ponds Duplication includes upgraded stations at Marshall and South Geelong, new rail bridges at Fyans Street and Surf Coast Highway and duplicated track and signalling.

Once completed, passengers will benefit from five train services per hour during the peaks and three per hour between the peaks for Marshall and Waurn Ponds stations, new public open space and create a continuous walking and cycling path between South Geelong and Waurn Ponds by adding over 5km of new connections.



New Fyans Street rail bridge concept image - view from Wood Street



## Improved design and traffic flow

The community and nearby residents will benefit from the removal of the complex and congested five-way roundabout at Fyans Street, which will improve safety and traffic flow through the area.

Vehicle movements will be altered to improve traffic flow with the separation of local residential drivers from industrial vehicles accessing the South Geelong precinct.

Changes to vehicle movements include:

- Fyans Street becomes a continuous stretch of road through to the Carr Street and Breakwater Road roundabout, reducing the idling of traffic and heavy vehicles
- Traffic lights installed at the intersection of Fyans and Wood streets allowing vehicles to safely turn right into Fyans Street
- no left hand turns into Carr Street from Fyans Street
- no right hand turn into Fyans Street from Carr Street
- access from Fyans Street to Carr Street will be via Breakwater Road and Martin Street or via Swanston Street to the west.

Cyclists and pedestrians are also set to benefit from a new pedestrian crossing over Fyans Street, connecting to the existing Bellarine Rail Trail.

The refined road layout design is still being finalised in consultation with Department of Transport and City of Greater Geelong and we will continue to update the community as the design is finalised.



Example of picnic seating



Example of BBQ area



Example of boulders for seating



## New public open space and recreation area

There will be new public open space created under and adjacent to the new rail bridge and we want you to co-design these spaces.

New public open space under and adjacent to the rail bridge will provide opportunities for passive and active recreation and beautiful landscaped areas.

Options could include large boulders for seating and climbing, BBQ facilities, picnic tables, a rest stop area to recharge for those venturing

along the Bellarine Rail Trail and garden beds to improve the visual appeal of the precinct.

Options for active recreation activities include outdoor gym equipment, playground equipment or table tennis tables to bring the local community together to take full advantage of the open space.

We want to ensure the space is valued and enjoyed long after the project is complete, so we need your input to co-design the public spaces and landscaped areas.

Example of exercise equipment



Example of informal play area



Example of table tennis table





## Creative opportunities

The new Fyans Street rail bridge will incorporate public artworks that will celebrate the local area.

High quality public art and creative design outcomes, delivered as part of the South Geelong to Waurin Ponds Duplication, will enhance people's experience of journey and place and leave a positive legacy for communities across Geelong.

Our *Creative Strategy* provides guidance on commissioning creative works on our projects which supports working with local artists and cultural organisations, engaging local communities and celebrating the creative culture of Victoria's First Peoples.

You can view the Regional Rail Revival Creative Strategy at [regionalrailrevival.vic.gov.au/creativeprogram](https://regionalrailrevival.vic.gov.au/creativeprogram).

We are currently exploring opportunities to integrate public artworks as part of the project.

Local artists will be invited to express interest in developing artworks to be integrated into the designs of the different elements of the project.

## Landscaping and revegetation

Two trees will be planted for every one removed during construction of the project.

Native trees and plants will make up a large number of these trees to enhance the local area and improve biodiversity along the rail corridor.

We are currently engaging with Wadawurrung Traditional Owners Aboriginal Corporation and City of Greater Geelong on the plant and tree species they would like to see planted across the project area.

Local stakeholders and the community will be given the opportunity to provide feedback and input into the landscaping plans for the area.



New Fyans Street rail bridge concept image - view from Carr Street



## What's happening now

The Djilang Alliance, comprising McConnell Dowell, Downer, Arup and WSP are delivering the South Geelong to Waurin Ponds Duplication project.

Early works have begun, including the relocation and upgrade of a number of Barwon Water pipelines, which will allow key sections of track to be duplicated between South Geelong and Waurin Ponds.

We are working closely with City of Greater Geelong and Wadawurrung Traditional Owners Aboriginal Corporation on the urban design, new public open spaces and creative opportunities across the project.

Feedback from the community will continue to inform the final design and creative and urban design opportunities.

Major construction commenced in late 2022 and is targeted for completion in late 2024.

## Keep Informed

As the project progresses, we will keep passengers and the community informed.

To receive updates about the South Geelong to Waurin Ponds Duplication sign up to our eNews at [regionalrailrevival.vic.gov.au/geelong](https://regionalrailrevival.vic.gov.au/geelong) or follow us on Facebook [facebook.com/RRRGeelongWarrnambool](https://facebook.com/RRRGeelongWarrnambool)

### Project timeline

2022

#### Contract award, consultation and construction underway

Continued community engagement.

Early works underway with major construction beginning in late 2022.

2024

#### Construction complete

Major construction targeted for completion in late 2024.

### Upgrading the Geelong Line


The Victorian and Australian governments are investing more than a billion dollars in projects to deliver better and more frequent services for communities between South Geelong and Waurin Ponds.

The South Geelong to Waurin Ponds Duplication project will enable more frequent services, upgrade South Geelong and Marshall stations and remove the dangerous and congested level crossings at Fyans Street and Surf Coast Highway.

The project is part of the Regional Rail Revival program which is upgrading every regional passenger line in Victoria and creating 3,000 jobs. Rail Projects Victoria is delivering the program on behalf of the Australian and Victorian governments.

### More information

 [regionalrailrevival.vic.gov.au](https://regionalrailrevival.vic.gov.au)

 1800 105 105  
(24 hours a day, 7 days a week)

Rail Projects Victoria  
PO Box 2392, Melbourne, VIC 3001



Interpreter Service (03) 9209 0147

It should be noted that this information is current at the time of printing, however due to unforeseen circumstances, changes may occur. Please visit [regionalrailrevival.vic.gov.au](https://regionalrailrevival.vic.gov.au) for the latest updates.