
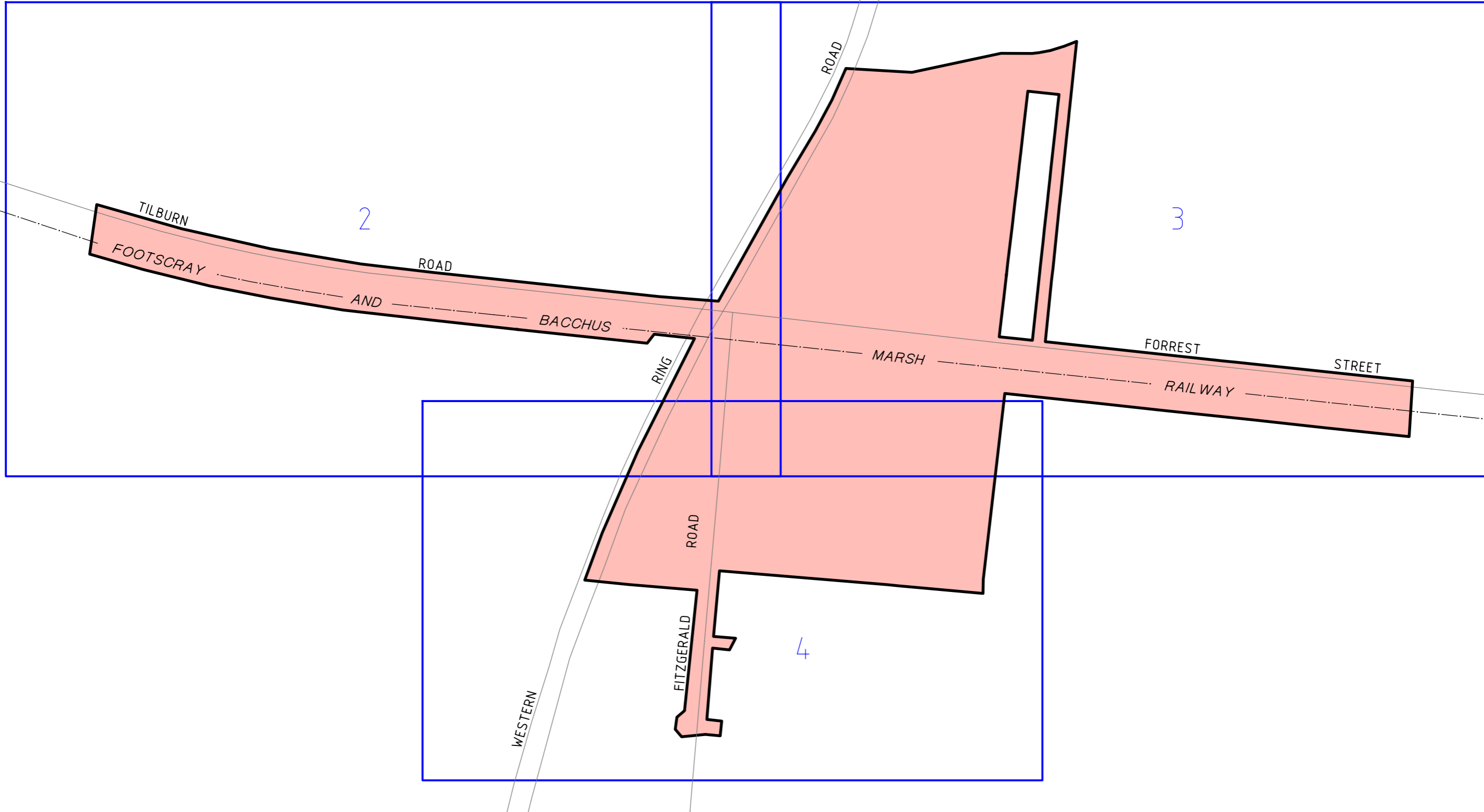



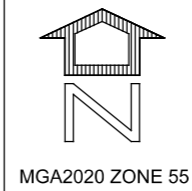
NOTE:  
 THE UNDERLYING CADASTRAL PARCEL LINEWORK WITHIN THIS PLAN  
 SHOWN THUS  HAS BEEN DERIVED FROM THE VICMAP PROPERTY  
 DATASET. AS PARCEL SPATIAL ACCURACY VARIES THIS INFORMATION  
 SHOULD ONLY BE USED FOR LOCALITY PURPOSES UNLESS OTHERWISE  
 DEFINED WITH AN SPI, LOT/PLAN AND/OR SURVEY REFERENCE.



PLAN TO DESIGNATE THE PROJECT AREA PURSUANT TO  
 SECTION 95(2) MAJOR TRANSPORT PROJECTS FACILITATION ACT 2009  
 Lodged in the Central Plan Office  
 Dated this **28th** day of **April** 2020  
  
 CRAIG LESLIE SANDY  
 Surveyor-General

**LEGEND**  
 PROJECT AREA

**FITZGERALD ROAD  
 PROJECT AREA**

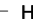


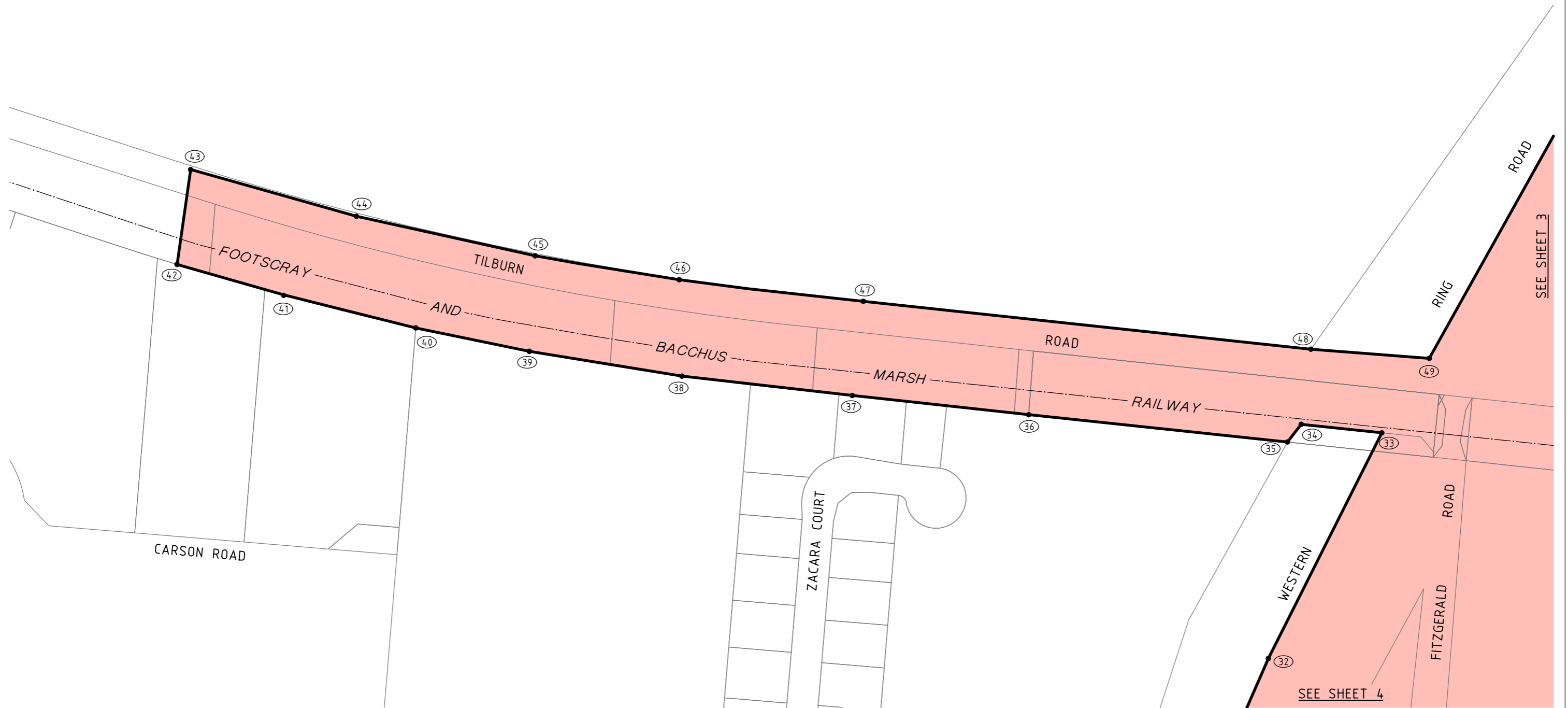
**LEVEL CROSSING REMOVAL PROJECT**

50 25 0 50 100 150 200  
 LENGTHS ARE IN METRES


SCALE  
 1:5000

ORIGINAL SHEET SIZE: A3	INDEX SHEET 1 of 5	LEGL./20.021
----------------------------	-----------------------	--------------


NOTE:  
 THE UNDERLYING CADASTRAL PARCEL LINEWORK WITHIN THIS PLAN SHOWN THUS  HAS BEEN DERIVED FROM THE VICMAP PROPERTY DATASET. AS PARCEL SPATIAL ACCURACY VARIES THIS INFORMATION SHOULD ONLY BE USED FOR LOCALITY PURPOSES UNLESS OTHERWISE DEFINED WITH AN SPI, LOT/PLAN AND/OR SURVEY REFERENCE.



POINTS SHOWN THUS ● (1) ARE COORDINATED.  
 SEE SHEET 5 FOR SCHEDULE OF COORDINATES.

LINES SHOWN THUS  ARE THE VICMAP PARCELS WHICH ARE THE APPROXIMATE LOCATION ONLY OF TITLE BOUNDARIES.

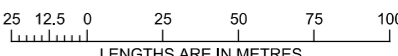
**LEGEND**

 PROJECT AREA


## FITZGERALD ROAD PROJECT AREA

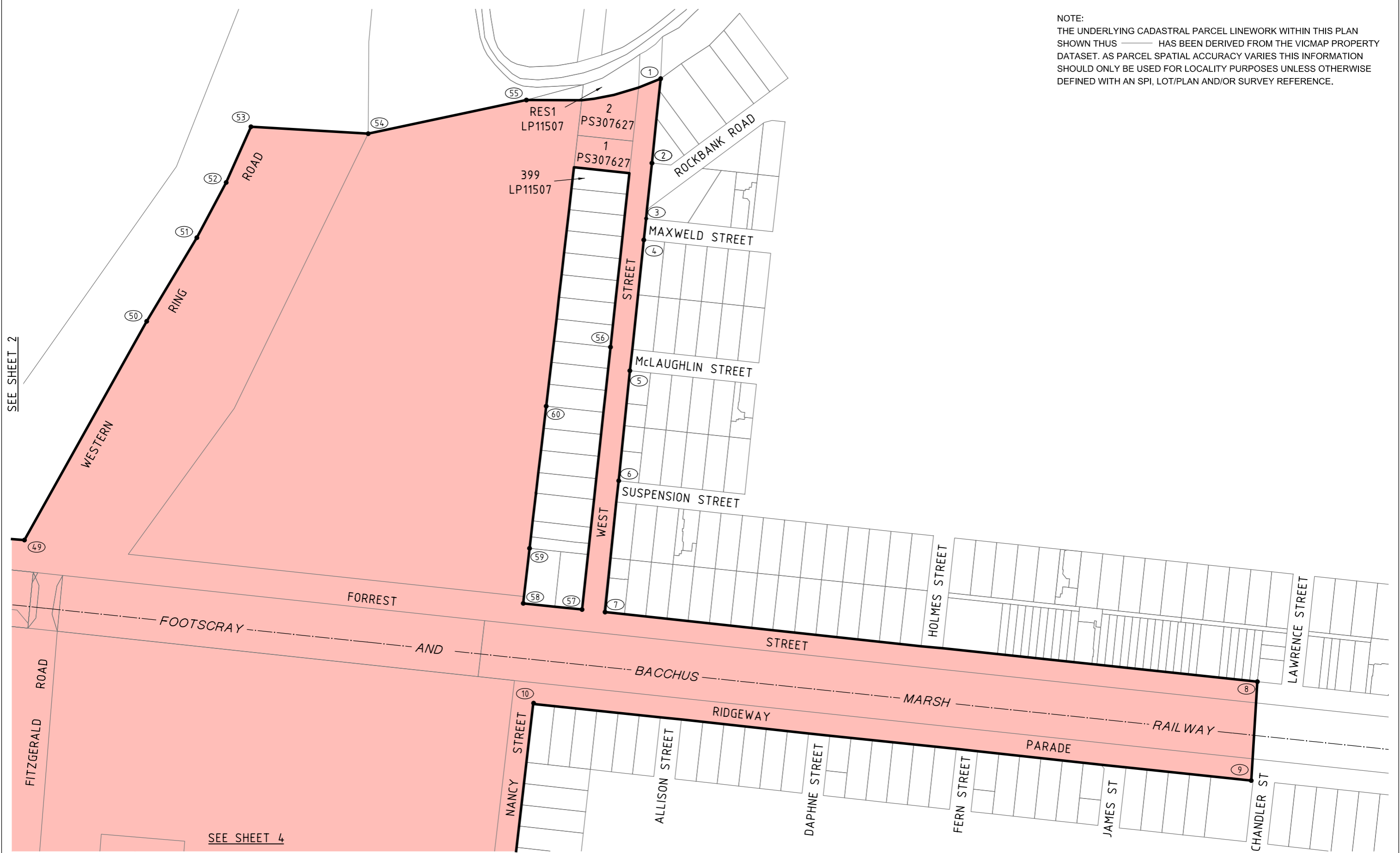


**LEVEL CROSSING REMOVAL PROJECT**


**SCALE**  
 1:2500


ORIGINAL SHEET SIZE: A3	SHEET 2 of 5	LEGL./20-021
----------------------------	-----------------	--------------

NOTE:  
 THE UNDERLYING CADASTRAL PARCEL LINEWORK WITHIN THIS PLAN SHOWN THUS  HAS BEEN DERIVED FROM THE VICMAP PROPERTY DATASET. AS PARCEL SPATIAL ACCURACY VARIES THIS INFORMATION SHOULD ONLY BE USED FOR LOCALITY PURPOSES UNLESS OTHERWISE DEFINED WITH AN SPI, LOT/PLAN AND/OR SURVEY REFERENCE.



POINTS SHOWN THUS ● (1) ARE COORDINATED.

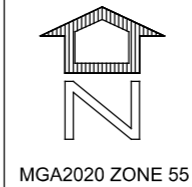
SEE SHEET 5 FOR SCHEDULE OF COORDINATES.

LINES SHOWN THUS  ARE THE VICMAP PARCELS WHICH ARE THE APPROXIMATE LOCATION ONLY OF TITLE BOUNDARIES.

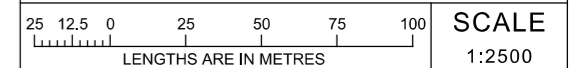
LEGEND

 PROJECT AREA


FITZGERALD ROAD  
PROJECT AREA



LEVEL CROSSING REMOVAL PROJECT

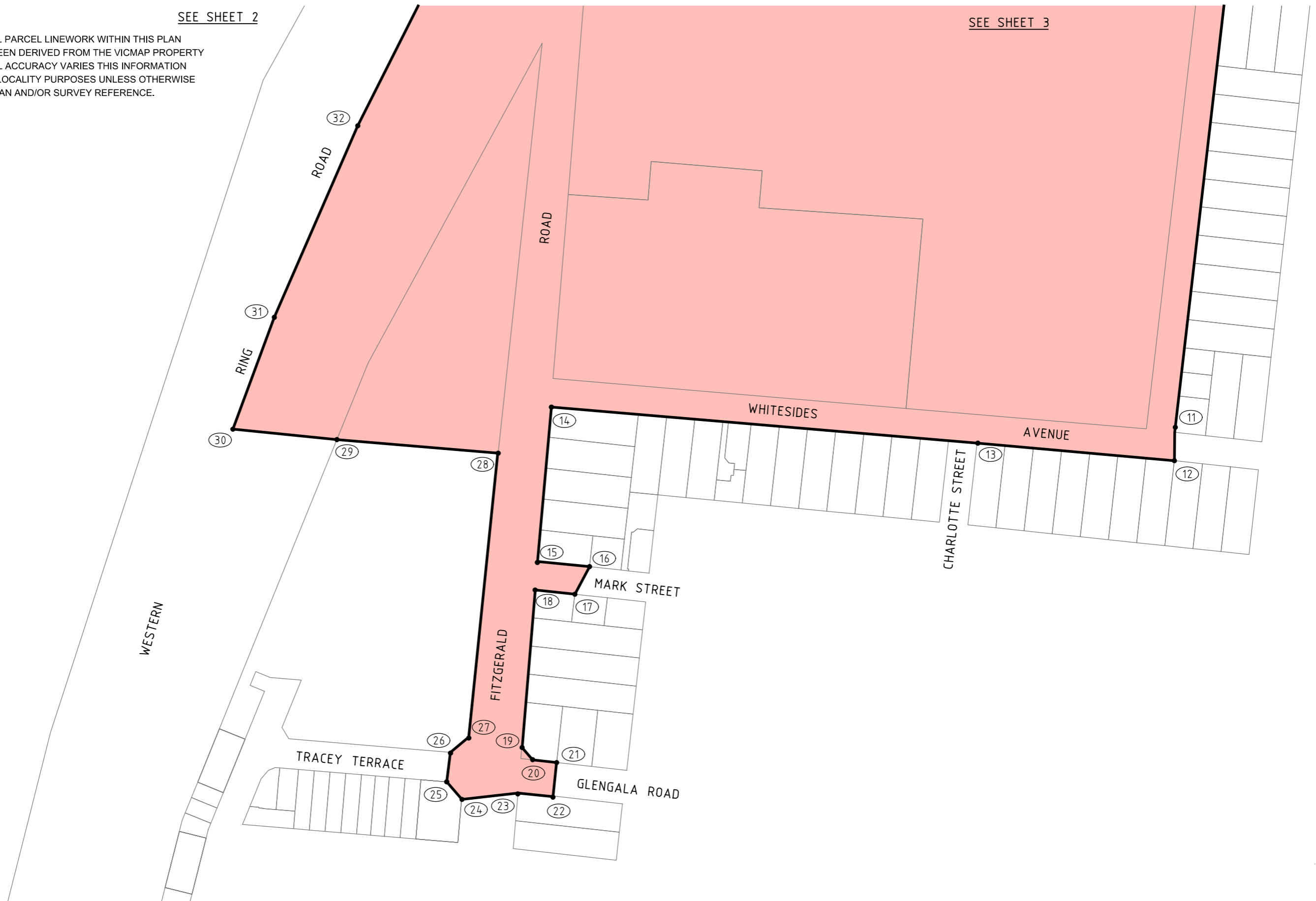


ORIGINAL SHEET SIZE: A3	SHEET 3 of 5	LEGL./20-021
----------------------------	-----------------	--------------


NOTE:  
 THE UNDERLYING CADASTRAL PARCEL LINEWORK WITHIN THIS PLAN SHOWN THUS  HAS BEEN DERIVED FROM THE VICMAP PROPERTY DATASET. AS PARCEL SPATIAL ACCURACY VARIES THIS INFORMATION SHOULD ONLY BE USED FOR LOCALITY PURPOSES UNLESS OTHERWISE DEFINED WITH AN SPI, LOT/PLAN AND/OR SURVEY REFERENCE.


SEE SHEET 2

SEE SHEET 3

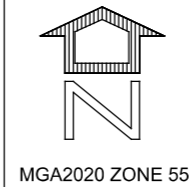


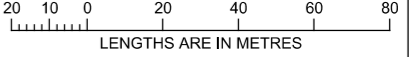
POINTS SHOWN THUS  ARE COORDINATED.  
 SEE SHEET 5 FOR SCHEDULE OF COORDINATES.

LINES SHOWN THUS  ARE THE VICMAP PARCELS WHICH ARE THE APPROXIMATE LOCATION ONLY OF TITLE BOUNDARIES.

**LEGEND**  
 PROJECT AREA

## FITZGERALD ROAD PROJECT AREA



<b>LEVEL CROSSING REMOVAL PROJECT</b>		
 <p>LENGTHS ARE IN METRES</p>		<p><b>SCALE</b> 1:2000</p>
ORIGINAL SHEET SIZE: A3	SHEET 4 of 5	LEGL./20-021

**MGA2020 ZONE 55 CO-ORDINATES (METRES)**

COORDINATES ROUNDED TO THE NEAREST METRE. ADD 2 DECIMAL PLACES FOR FULL PRECISION

POINT	EAST	NORTH
1	305968	5816461
2	305962	5816400
3	305958	5816361
4	305956	5816346
5	305946	5816252
6	305938	5816173
7	305928	5816079
8	306395	5816029
9	306391	5815958
10	305877	5816013
11	305849	5815774
12	305849	5815759
13	305743	5815768
14	305514	5815788
15	305507	5815705
16	305535	5815702
17	305527	5815687
18	305505	5815689
19	305498	5815605
20	305504	5815598
21	305517	5815597
22	305515	5815578
23	305496	5815580
24	305466	5815577
25	305458	5815586
26	305460	5815602
27	305470	5815610
28	305485	5815763
29	305399	5815770

POINT	EAST	NORTH
30	305343	5815776
31	305365	5815836
32	305410	5815939
33	305482	5816083
34	305431	5816088
35	305422	5816077
36	305257	5816094
37	305144	5816107
38	305036	5816119
39	304938	5816135
40	304866	5816150
41	304781	5816171
42	304713	5816190
43	304722	5816251
44	304828	5816221
45	304942	5816196
46	305034	5816180
47	305151	5816167
48	305437	5816136
49	305513	5816130
50	305600	5816287
51	305636	5816347
52	305657	5816386
53	305675	5816426
54	305759	5816421
55	305872	5816445
56	305933	5816268
57	305912	5816080
58	305870	5816085

POINT	EAST	NORTH
59	305875	5816124
60	305886	5816226

COORDINATE  
SCHEDULE

FITZGERALD ROAD  
PROJECT AREA



**LEVEL CROSSING REMOVAL PROJECT**

ORIGINAL SHEET  
SIZE: A3

SHEET  
5 of 5

LEGL./20-021