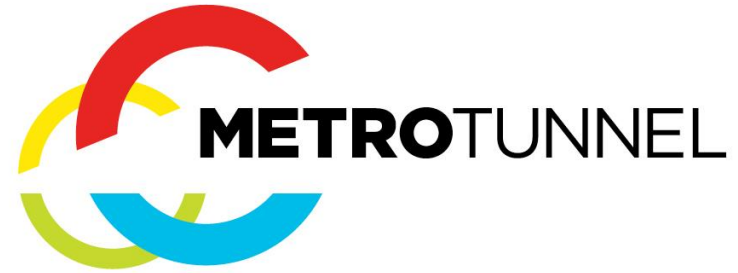


#	DATE RAISED	ACTION / ISSUE	OWNER	STATUS	DATE CLOSED
S24-4	2 February 2021	RIA to provide an update on the construction end dates, and timeline for when access to the South Yarra Siding Reserve, Arthur Street and Lovers Walk will be reinstated.	RIA / CYP	OPEN – RIA is working with CYP and Stonnington to understand the likely date for reinstatement of South Yarra Siding reserve. RIA and CYP will continue to provide updates.	
S26-1	8 June 2021	RIA to present an update on the outcome of the investigations into the 'rail squeal' track noise which began around the start of December 2020.	RIA	OPEN – RIA investigations are continuing, a noise specialist may present to the reference group at Nov 23 CRG, TBC. RIA have <ul style="list-style-type: none"> - Checked the weights of trains - Checked type of rail vehicles using the track - Checked the geometry of track curve - Checked for sediment and wear The steps that have been taken will be discussed at the Nov 23 CRG. Investigations remain ongoing.	
S28-1	31 August 2021	RPV / RIA to provide more information regarding the permanent public artwork within the South Yarra Siding Reserve and to follow up with City of Stonnington regarding community input on the Creative Advisory Panel.	RPV / RIA	CLOSED – RIA presented on the permanent public artwork within the South Yarra Siding Reserve at CRG meeting 29.	12 October 2021
S29-1	12 October 2021	RIA (with MTM) to advise whether the reduction in vegetation on the Sandringham and Frankston/Dandenong lines due to replacement of batters with vertical concrete walls has had any impact on rail corridor noise reaching residences.	RIA	OPEN	



SOUTH YARRA (EASTERN PORTAL) PRECINCT

COMMUNITY REFERENCE GROUP

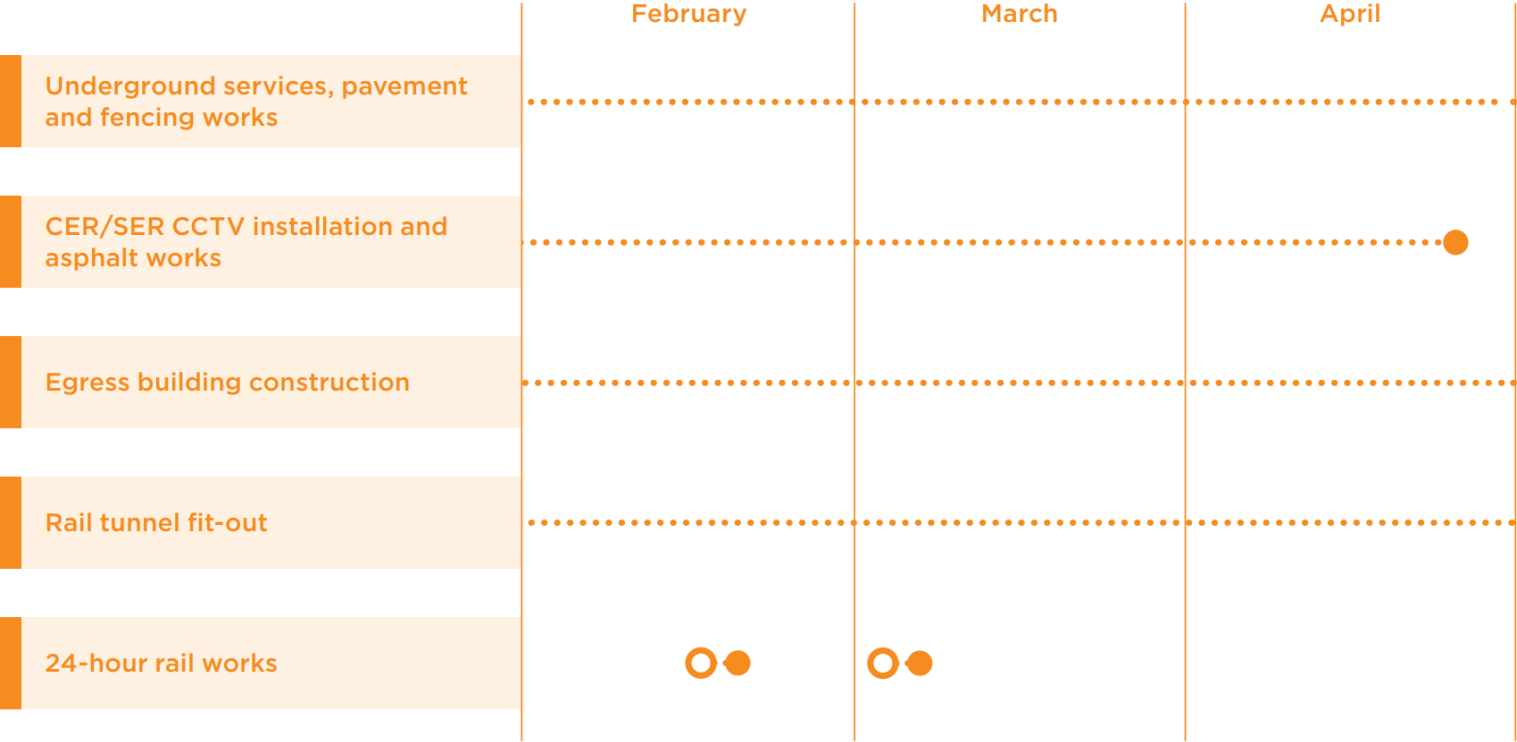
22 February 2022





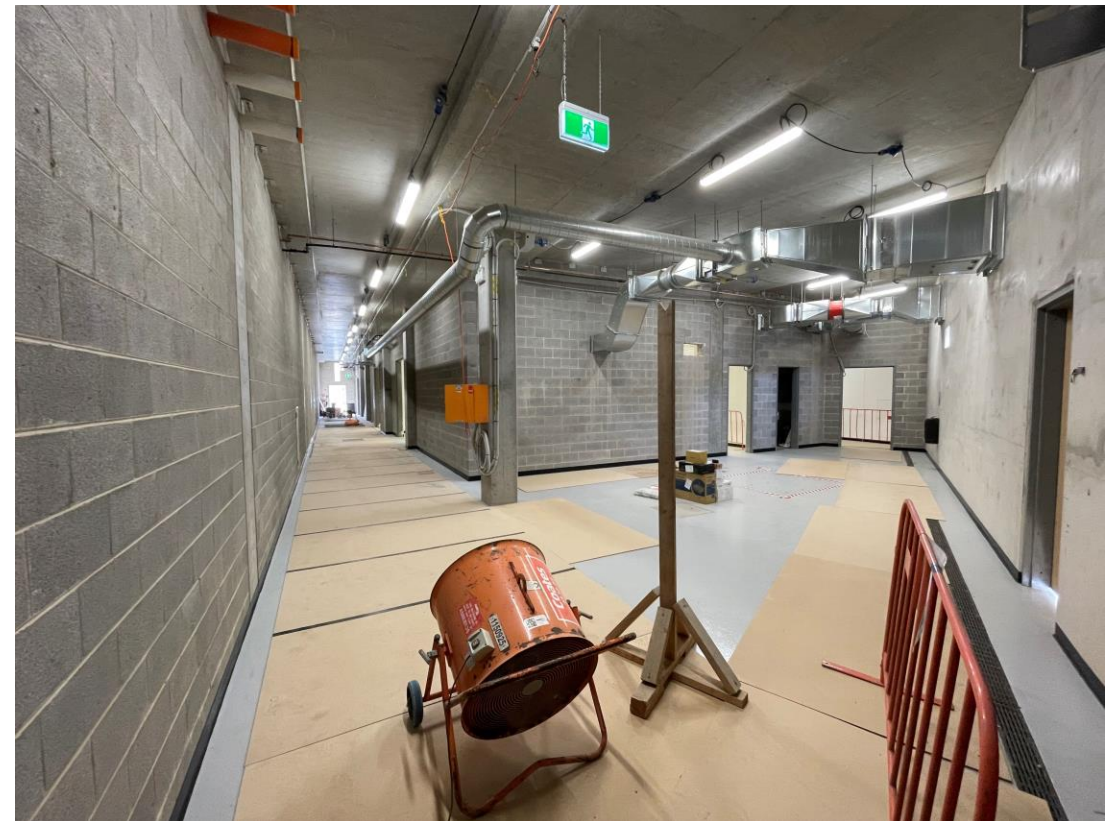
CONSTRUCTION UPDATE - RNA

CONSTRUCTION LOOKAHEAD



CONSTRUCTION PROGRESS

RNA – Inside the substation



CONSTRUCTION PROGRESS

RNA – Substation works



CONSTRUCTION PROGRESS

RNA – Hard landscaping





CONSTRUCTION UPDATE - CYP

RETRIEVAL SHAFT BUILD OUT



- Formwork, steelfixing and concrete pours continue in the retrieval shaft to build lining walls and the stub tunnel
- Once this is complete work will commence on core walls and lift shafts as the internal structure begins to take shape.



TRACK FOUNDATION AND RAIL TUNNEL FIT-OUT

Concrete invert construction



- The tunnel invert between Eastern Portal and Town Hall Station in the westbound tunnel. Tunnel invert concrete pours are now complete in the East
- Early stages of rail tunnel fit-out from the retrieval shaft and from the Anzac Station site continue.



Tunnel Leading to Anzac Station

TRACK FOUNDATION

Decline structure



- Track foundation concrete has been completed in the decline structure
- This includes 'scabbling' which is a method of roughing up the surface for adhesion of concrete pours.



Concrete trackform in decline structure

NEW SITE FACILITIES

William Street



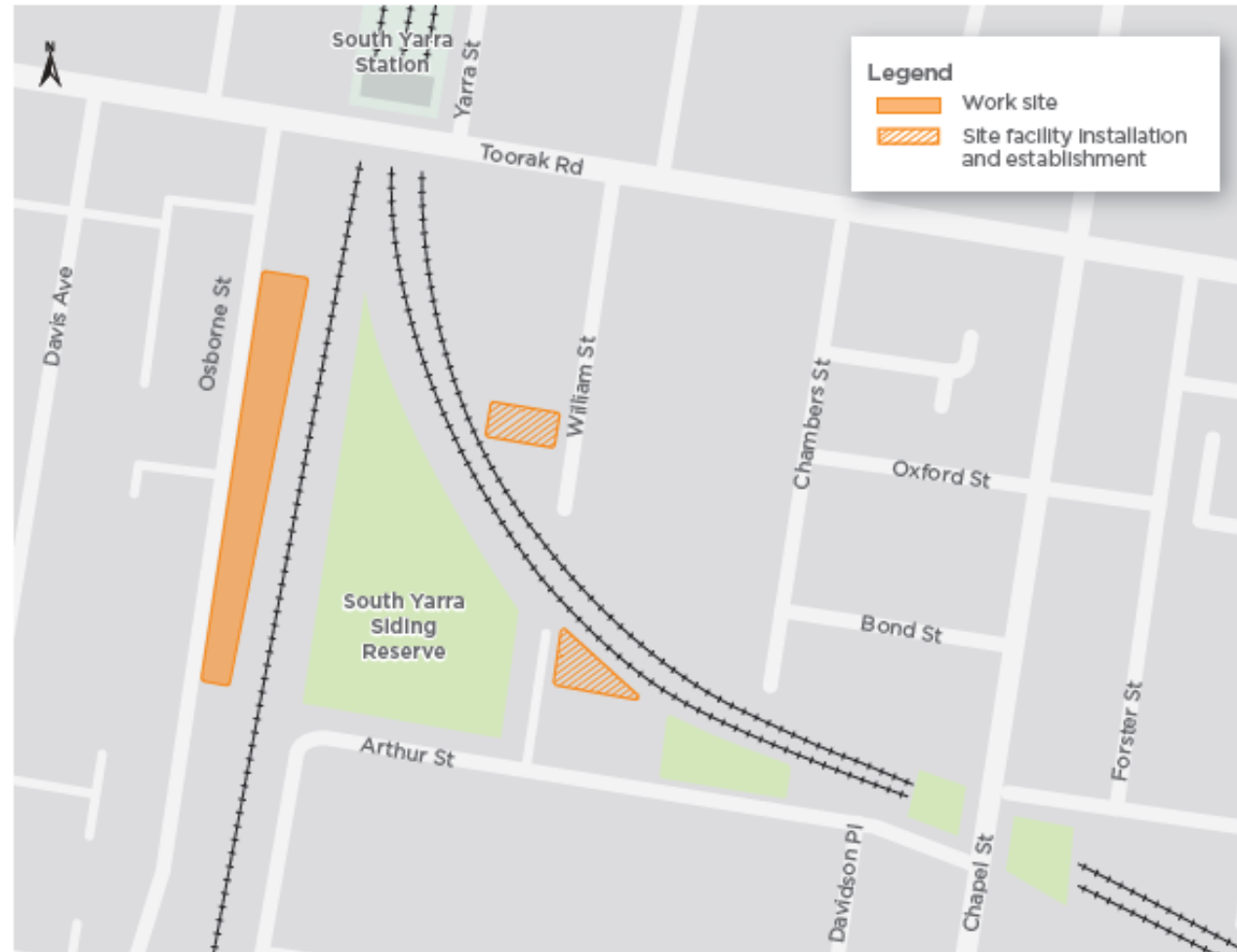
- As the retrieval shaft gets built out, it will become unavailable to use for deliveries into the tunnels
- To allow rail tunnel fit-out works to continue while the retrieval shaft is built out, the William Street Bridge will become the primary access point for these works
- A crane will be set up on the bridge to lower equipment to workers below, who will then take it into the tunnels
- New site facilities will be installed at the southern end of the William Street Bridge for rail tunnel fit-out workers to use.



Material will be lowered off the William Street Bridge

SITE ESTABLISHMENT

William Street



Indicative only

- This week, a crane will be set up to install the site sheds as they get delivered to site on William Street
- The sheds will take approximately four days to install
- In early April the crane that will be used to lower equipment for rail tunnel fitout will be installed on the William Street Bridge
- Deliveries into the decline structure from the William Street Bridge will commence shortly after the crane is installed
- Later in 2022, rail will be delivered to the decline structure by train under rail occupation.



COMMUNITY & COMMUNICATIONS UPDATE

COMMUNICATIONS

Recent and upcoming communications



- The February construction update has been distributed to residents and businesses and is available online
- The update includes information about upcoming works, including 24-hour rail occupations
- The March construction update is currently in development.



Upcoming rail works

February and March 2022



– Out of hours

- Nightly, 8pm to 5am Wednesday 2 March and Thursday 3 March
 - Track and rail asset maintenance

– 24-hours

- 8pm Sunday 20 February to 3am Friday 25 February
- 8pm Friday 4 March to 3am Monday 7 March
 - Track and rail asset maintenance
 - High capacity signalling technology testing.



QUESTIONS?