

ACTIONS AND ISSUES REGISTER

| # | DATE RAISED | ACTION / ISSUE | OWNER | STATUS | DATE CLOSED |
|-------|------------------|--|-----------|--|-------------|
| S24-4 | 2 February 2021 | RNA to provide an update on the construction end dates, and timeline for when access to the South Yarra Siding Reserve, Arthur Street and Lovers Walk will be reinstated. | RNA / CYP | OPEN – RNA is working with CYP to understand the likely date for reinstatement of South Yarra Siding reserve. RNA and CYP will continue to provide updates. | |
| S26-1 | 8 June 2021 | RNA to present an update on the outcome of the investigations into the ‘rail squeal’ track noise which began around the start of December 2020. | RNA | OPEN – RNA to provide an update at the next CRG Meeting. | |
| S29-1 | 12 October 2021 | RNA (with MTM) to advise whether the reduction in vegetation on the Sandringham and Frankston/Dandenong lines due to replacement of batters with vertical concrete walls has had any impact on rail corridor noise reaching residences. RNA to also investigate the feasibility of sound dampening along the rail corridor, and present on noise and frequency data (including baseline data from before works commenced) at a future CRG. | RNA | OPEN - RNA to provide an update at the next CRG Meeting. | |
| S31-1 | 22 February 2022 | CYP to provide a project wide update at the next CRG meeting. | CYP | OPEN | |



SOUTH YARRA (EASTERN PORTAL) PRECINCT

COMMUNITY REFERENCE GROUP

5 April 2022





CONSTRUCTION UPDATE - RNA

- Siding reserve civil works mid 2022, followed by handover process
- RNA is focusing on signalling testing and upgrades
- These works are mostly low impact
- RNA will return to complete the Osborne Street public realm works after CYP complete their egress building works

CONSTRUCTION PROGRESS

Siding reserve – 2021 and 2022



Siding Reserve

Looking south



Siding Reserve

Looking north

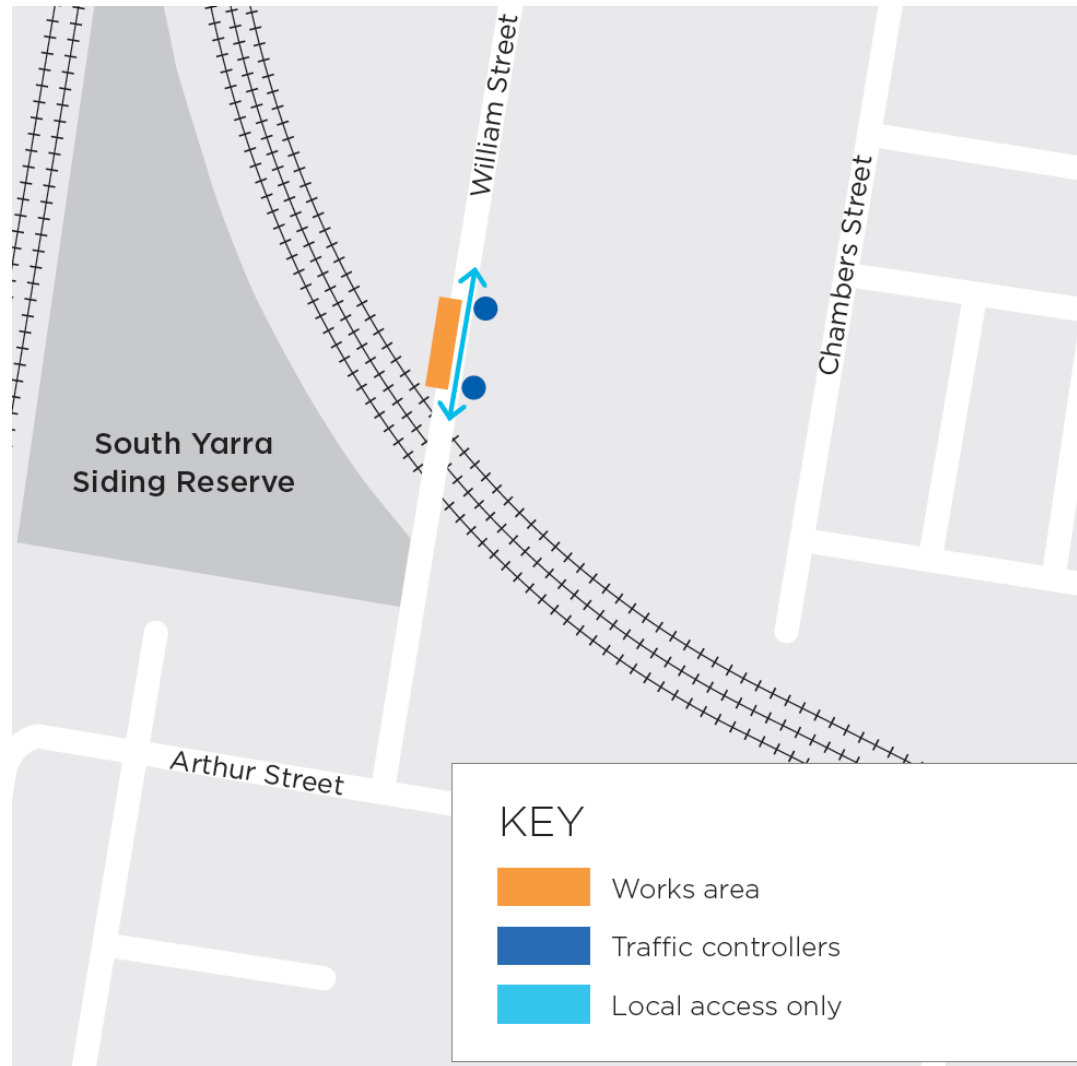


Substation works



Underground cable installation

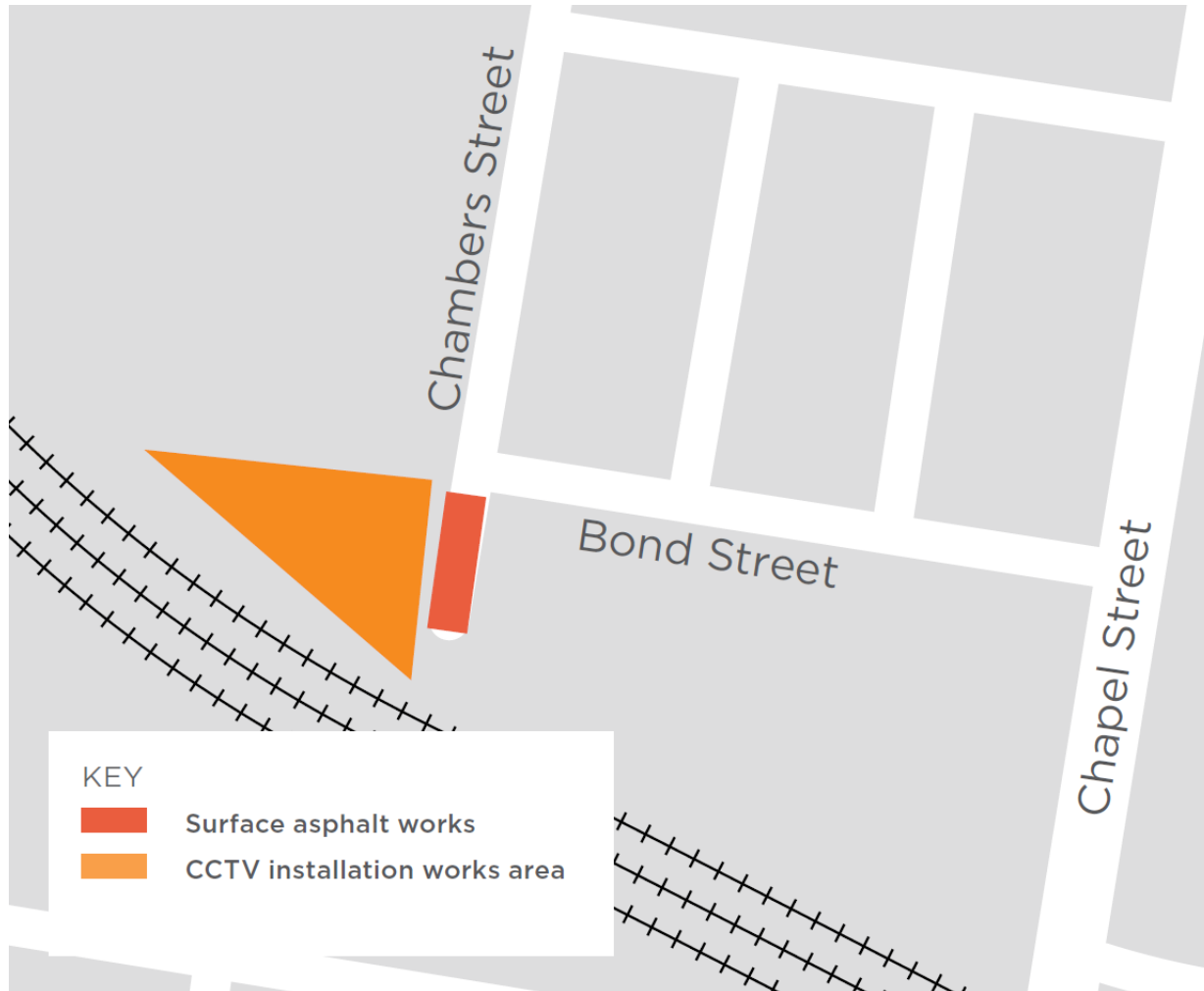
William Street



- Works will continue until April 14 2022
- Installing 22kV conduits below a section of William Street
- Works will involve excavating a section of William Street and backfilling the works area once activity has been completed
- These works require non-destructive digging, excavators, asphalt equipment and crews with hand tools
- To ensure the safety of pedestrians and local vehicles, a section of William Street will temporarily be closed while we undertake these works
- Local property access will be maintained during this time with traffic controllers in place

CCTV installation and asphaltting

Communications Equipment Room and Signalling Equipment Room (CER/SER) compound,
Chambers Street



- Works will continue until June 2022
- Installing underground cables, CCTV and light poles within the CER/SER site compound
- Asphaltting the CER/SER area and a section of Chambers Street near the site
- Underground cable installation will require the use of a non-destructive digging truck
- Asphaltting works will involve a small excavator and compaction roller
- Traffic management will be in place along Chambers and Bond streets to safely facilitate pedestrian and local vehicle access.



CONSTRUCTION UPDATE - CYP

RETRIEVAL SHAFT BUILD OUT AND EGRESS BUILDING CONSTRUCTION



- The first stub tunnel on the eastbound side has been completed
- The stub connects the tunnel structure to the structural walls of the retrieval shaft
- Similar work continues on the westbound stub tunnel, due to be completed in early May.

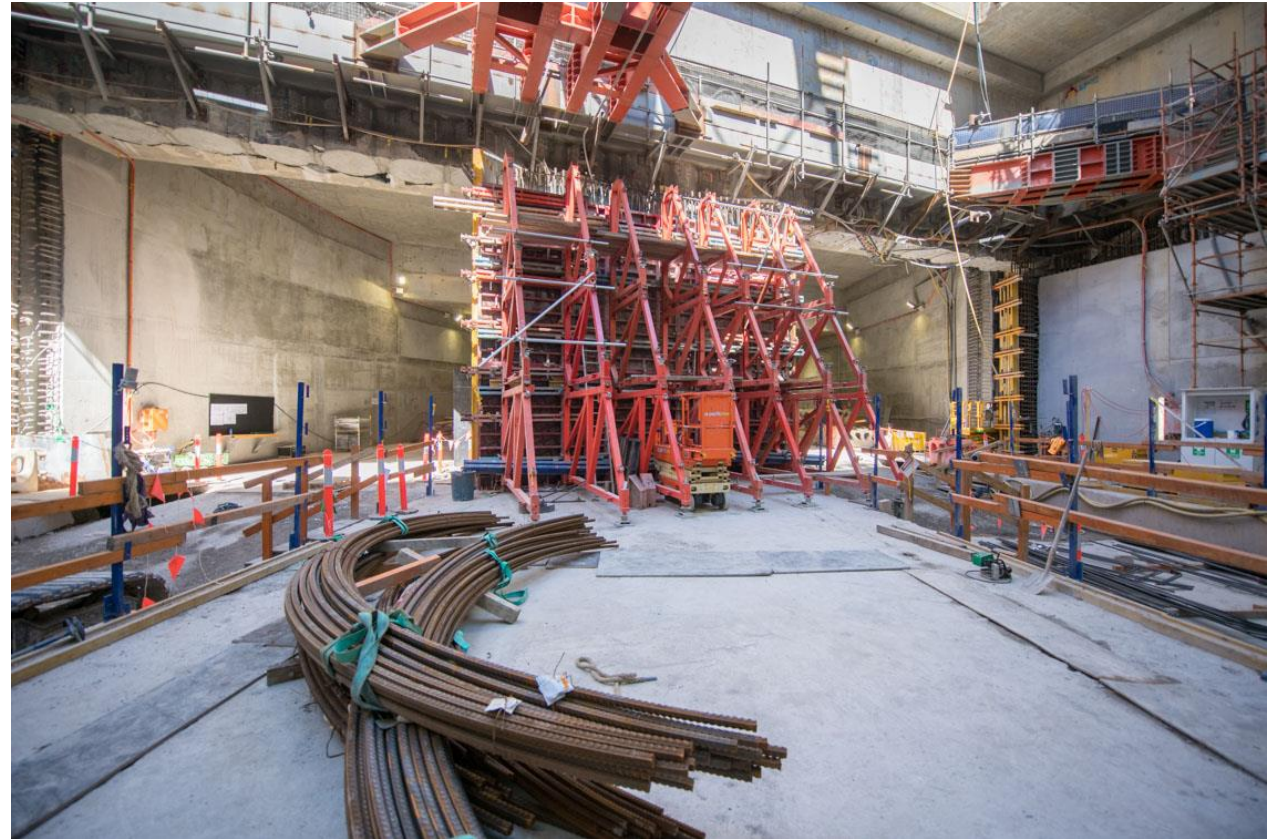


Completed stub tunnel

RETRIEVAL SHAFT BUILD OUT AND EGRESS BUILDING CONSTRUCTION



- Completion of the stub tunnels will allow B1 floor slab to commence
- This slab will be poured in May
- All tunnel invert works at track level are complete connecting the decline structure to the tunnels.



Formwork to construct a lining wall

NEW SITE FACILITIES

William Street



- William Street site facilities are almost completely installed, with the last plumbing and electrical works ongoing
- In April, a large crane will be set up on the William Street Bridge to lower rail tunnel fitout equipment to crews below
- Minor lifting activities will begin from this crane shortly after its installation
- The delivery of rail tunnel fitout equipment will see an increase in trucks through William Street.



Installation of site facilities on William Street



COMMUNITY & COMMUNICATIONS UPDATE

COMMUNICATIONS

Recent and upcoming communications



- The April construction update will be distributed to residents and businesses and available online this week
- The update includes information about upcoming works, including out of hours rail activity



Upcoming rail works

April and May 2022



- **Out of hours**

- Out of hours testing will continue intermittently on the Cranbourne and Pakenham lines throughout 2022 to enable High Capacity Signalling testing
- Testing of the High Capacity Signalling technology is expected to generate low levels of noise.



LANDSCAPING UPDATE



Artist's impression. Trees and vegetation shown are approximately 5-8 years growth



RNA PLANT SPECIES



PLANT SCHEDULE

| CODE | BOTANICAL NAME | COMMON NAME |
|----------------|---|----------------------------|
| TREES | | |
| CC | <i>CORYMBIA CITRIODORA</i> | LEMON SCENTED GUM |
| CE | <i>CORYMBIA EXIMIA 'NANA'</i> | YELLOW BLOODWOOD |
| CCS | <i>CORYMBIA CITRIODORA 'SCENTUOUS'</i> | DWARF LEMON SCENTED GUM |
| EL | <i>EUCALYPTUS LEUCOXYLON 'ROSEA'</i> | YELLOW GUM |
| ED | <i>EUCALYPTUS LEUCOXYLON 'EUKY DWARF'</i> | GUM TREE |
| FP | <i>FRAXINUS PENNSYLVANICA 'CIMMZAM'</i> | CIMMARON ASH |
| TL | <i>TRISTANIOPSIS LAURINA 'LUSCIOUS'</i> | KANOOKA GUM |
| PC | <i>PHOENIX CANARIENSIS</i> | CANARY ISLAND DATE PALM |
| HB | <i>HAKEA BUCCULENTA 'RED POKERS'</i> | RED POKERS HAKEA |
| HL | <i>HAKEA LAURINA</i> | PINCUSHION HAKEA |
| EMLS | <i>EUCALYPTUS MANNIFERA 'LITTLE SPOTTY'</i> | DWARF RED SPOTTED GUM |
| EUM | <i>EUCALYPTUS MELLIODORA</i> | EUCALYPTUS 'BEARSELL PINK' |
| GP | <i>GEIJERA PARVIFLORA</i> | WILGA WILLOW |
| BAS | <i>BANKSIA SERRATA</i> | OLD MAN BANKSIA |
| CFF | <i>CORYMBIA FICIFOLIA 'FAIRY FLOSS'</i> | FAIRY FLOSS FLOWERING GUM |
| PCC | <i>PYRUS CALLERYANA 'CLEVELAND SELECT'</i> | CLEVELAND SELECT |
| SHRUBS | | |
| DV | <i>DODONAEA VISCOSA</i> | STICKY HOP-BUSH |
| CG | <i>CORREA GLABRA</i> | ROCK CORREA |
| CV | <i>CALLISTEMON VIMINALIS 'LJ1' PBR</i> | BETTER JOHN™ |
| CHPE | <i>CROWEA HYBRID 'POORINDA ECSTACY'</i> | WAXFLOWER |
| DE | <i>DORYANTHES EXCELSA</i> | GYMEALILY |
| RSFB | <i>RHAGODIA SPINESCENS 'FLAT BUSH'</i> | SALTBUSH |
| PA | <i>PLECTRANTHUS ARGENTATUS</i> | SILVER PLECTRANTHUS |
| GRASSES | | |
| AT | <i>AUSTROSTIPA STIPOIDES</i> | SPEAR GRASS |
| DA | <i>DIANELLA ADMIXTA</i> | BLACK-ANTHER |

GROUNDCOVERS

| | | |
|------|--|-------------------------|
| AC | <i>ARTHROPODIUM CIRRATUM</i> | RENGA LILY |
| BMBD | <i>BRACHYSCOMBE MULTIFIDA 'BREAK OF DAY'</i> | NATIVE DAISY |
| CA | <i>CHRYSOCEPHALUM APICULATUM</i> | YELLOW BUTTONS |
| CL | <i>CALOCEPHALUS LACTEUS</i> | MILKY BEAUTY HEADS |
| CR | <i>CARPOBROTUS ROSSII</i> | KARKALLA |
| HS | <i>HIBBERTIA SCANDENS</i> | SNAKE VINE |
| HFGN | <i>HYMENOSPORUM FLAVUM 'GOLD NUGGET'</i> | DWARF NATIVE FRANGIPANI |
| MP | <i>MYOPORUM PARVIFOLIUM</i> | CREEPING BOOBIALLA |

CLIMBERS

| | | |
|----|--------------------------------|----------|
| AR | <i>APHANOPETALUM RESINOSUM</i> | GUM VINE |
|----|--------------------------------|----------|

WSUD

| | | |
|----|---|----------------------|
| LL | <i>LOMANDRA LONGIFOLIA VAR 'LONGIFOLIA'</i> | BASKET GRASS |
| JP | <i>JUNCUS PALLIDUS</i> | PALE RUSH |
| PP | <i>POA POIFORMIS</i> | COASTAL TUSOCK GRASS |

LAWN

| | | |
|------|--------------------------------|--------|
| TG01 | <i>PENNESETUM CLANDESTINUM</i> | KIKUYU |
| TG02 | <i>PENNESETUM CLANDESTINUM</i> | KIKUYU |

* Exotic, Native or Indigenous Plant

RNA PLANT SPECIES



Red Poker Hakea



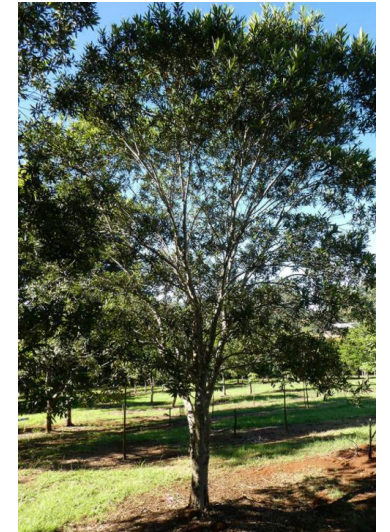
Cimmaron Ash



Wilga Willow



Lemon Scented Gum



Kanooka Gum



PROJECT UPDATE

- Construction of the station entrance building around the arches is underway
- Two of the three skylights have been installed
- Over track exhaust and platform precast installation is complete
- Mechanical, electrical and plumbing fitout is ongoing



Structural steel installation for station entrance building

PARKVILLE STATION



- The first gantry crane at Parkville has now been removed. The three gantry cranes were first installed in 2019 to facilitate the final stage of station box excavation
- Waterproof membrane installation is ongoing within the Royal Parade underpass
- Escalator delivery to the Grattan Street east site between the concourse and platform level

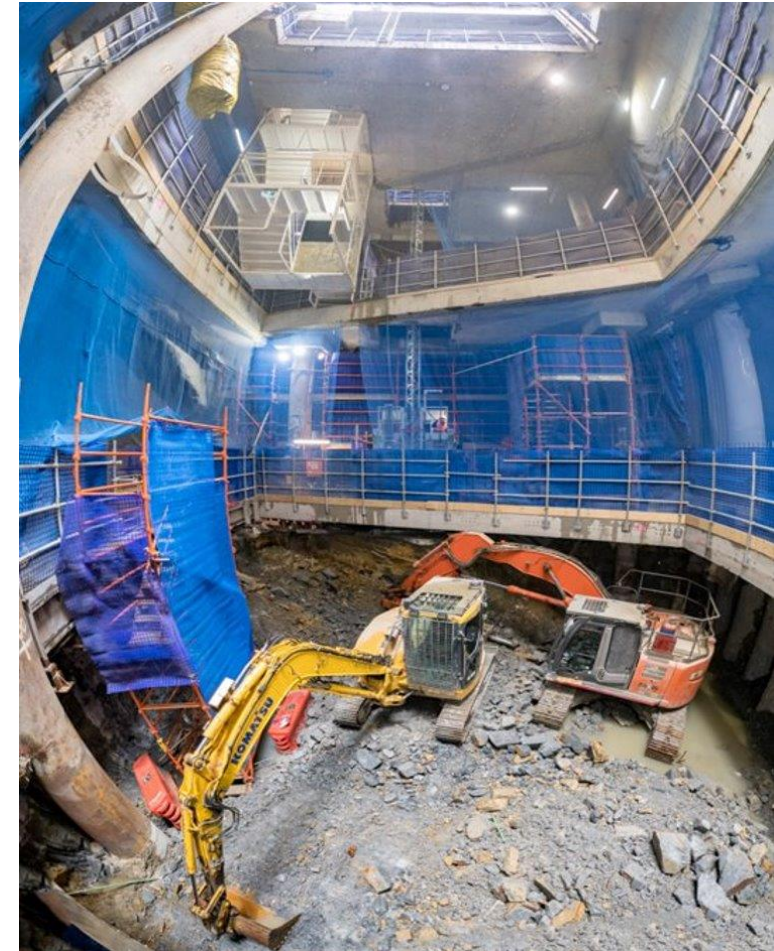


Gantry crane removal

STATE LIBRARY STATION



- Final trinocular cavern sidewall pour complete
- Platform arch frame reinforcement cage has been installed
- Over track exhaust precast deliveries from Arden continue
- Excavation of the shaft at Little La Trobe Street is complete
- Excavation of the Little La Trobe Street adit is close to completion. This will mark the end of excavation for the site.



Excavation at Little La Trobe Street

TOWN HALL STATION

Concrete invert construction



- All central cavern arch pours are now complete. Works on rail tunnel arch pours are ongoing
- Excavation is complete at City Square, Federation Square and within the cavern and rail tunnels
- Excavation is ongoing at Flinders Quarter where basements 4&5 are simultaneously being excavated
- Works are progressing on Flinders Link and the team will occupy Campbell Arcade from 30 April to undertake works to construct a connection between Town Hall station and the existing Flinders Street Station.



Central cavern arch

- Surface demolition and excavation has commenced to remove temporary site surface
- Over track exhaust and platform precast installation is ongoing
- At tram/train interchange, lifts, escalators and stairs have been installed
- The first of the green canopy support legs have been installed.



Anzac Station canopy leg being lowered



QUESTIONS?