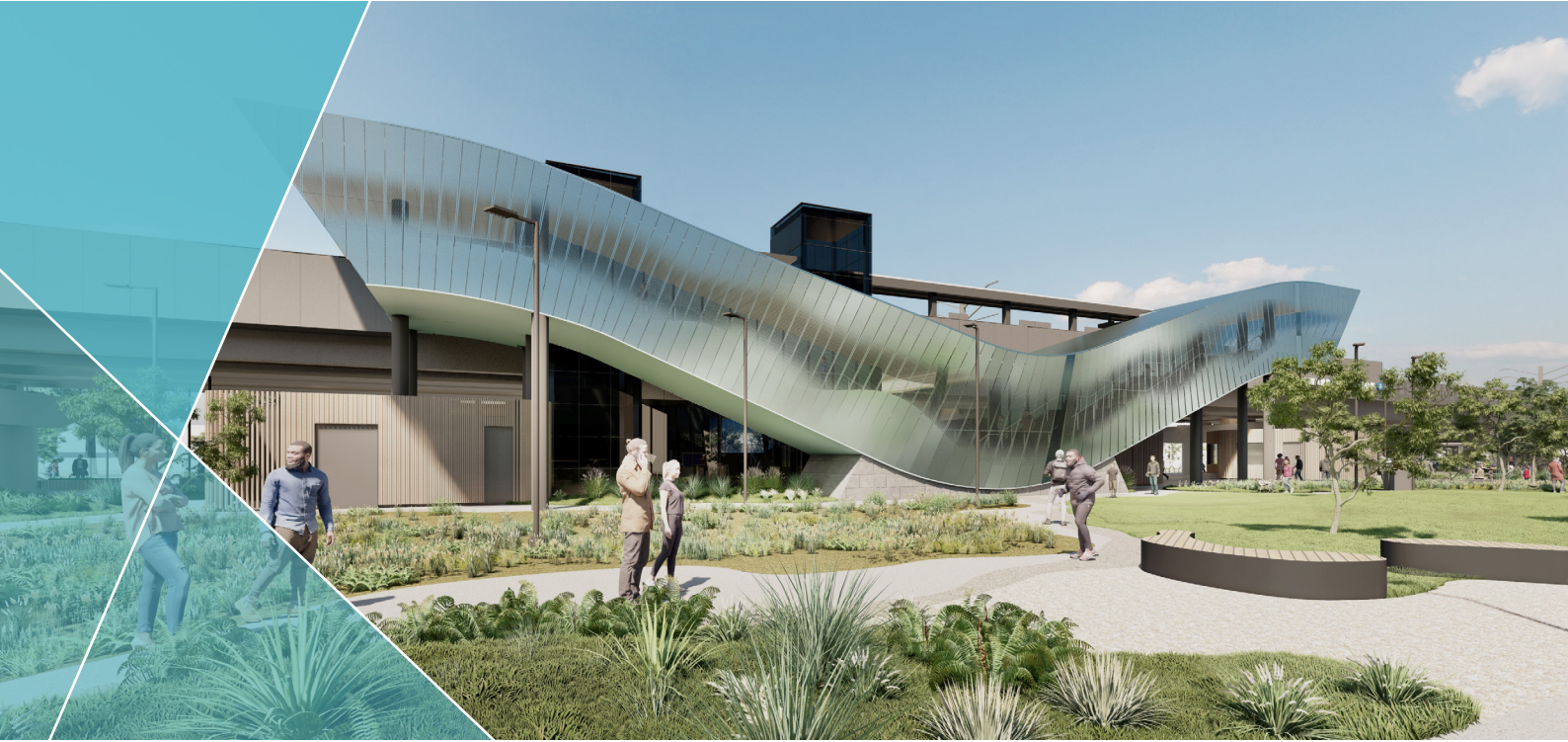


MANAGING THE ENVIRONMENT



Narre Warren Station staircase and forecourt. Artist impression, subject to change.

As part of the Victorian Government's commitment to removing 85 dangerous and congested level crossings, we're removing the level crossing at Webb Street, Narre Warren.

We'll remove the level crossing by building a new elevated rail bridge over Webb Street. We'll also build a new Narre Warren Station featuring improved and modern facilities for the community to enjoy.

Throughout the design and construction of the project, we work with specialists to carefully consider sustainability, the environment, and culture and heritage.

Assessments were completed in the project's planning phase to determine impacts on trees, vegetation and any sites of cultural significance within the project area.

We also completed ecological assessments to understand our impact on flora and fauna within the project area.



The Webb Street Level Crossing Removal Project is committed to protecting the environment and promoting sustainability.

Protecting the dwarf galaxias

Did you know Narre Warren is home to a vulnerable species of tiny fish known as the dwarf galaxias?

Our investigations found the small but important dwarf galaxias fish species living in wetlands within the rail corridor.

To protect this area of habitat we have designed the rail line and associated infrastructure to avoid the wetlands.

We will schedule our works near the wetlands outside of their breeding season and fence-off the areas of habitat close to our works. We will also continuously monitor the area to ensure the dwarf galaxias is not affected, including having an ecologist present when works are close to the wetlands.



New plantings and landscaping are important parts of the project's design, including in the new Narre Warren Station forecourt.

For every tree removed, we'll replant two trees or plants within the new Narre Warren Station precinct. All chosen plants are considered in the project's design to ensure landscaping fits with the surrounding area.

We'll begin planting towards the end of the project.

Protecting trees, vegetation and wildlife during construction

Some trees and vegetation will need to be removed so we can build the new Narre Warren Station and rail bridge over Webb Street.

However, we're committed to retaining and protecting as many flora and fauna as possible during our works.

We'll do this by:

- inspecting trees before they're removed to identify the presence of wildlife
- working with qualified arborists, as well as sustainability and environmental specialists
- having measures in place to protect wildlife, such as the dwarf galaxias
- putting up fencing to create 'no go zones' and 'tree protection zones' to protect sensitive vegetation and wildlife
- complying with federal and state government environmental legislation requirements

When tree and vegetation removal is unavoidable, we'll reuse that timber and mulch throughout the project.



STAY UP TO DATE ON OUR WORKS

Scan the QR code or text **WEBB** to **0427 840 967** to receive real-time notifications about works that may impact you.



Reducing waste

The project will use recycled materials such as fill and asphalt where possible and will donate leftover materials, such as old track.



Water sensitive urban design

The design of the new station forecourt incorporates bioretention drains, which are shallow basins built into the landscaping. The basins capture stormwater runoff, maximising plant health and reducing the need for irrigation.



Southeast view of Narre Warren Station. Artist impression, subject to change.

CONTACT US

contact@levelcrossings.vic.gov.au

1800 105 105

Level Crossing Removal Project
GPO Box 2392, Melbourne VIC 3001

Follow us on social media

@levelcrossings



Translation service – For languages other than English, please call 9209 0147.

Please contact us if you would like this information in an accessible format.

If you need assistance because of a hearing or speech impairment, please visit relayservice.gov.au