

## APPENDIX D CBD SOUTH PRECINCT PUBLIC REALM PLANS

Public Realm Legend	TAS-CYP-CS-00-DRG-AUD-CBS-740001-DP
Hardscape Plan – Sheet 1 of 3	TAS-CYP-CS-00-DRG-AUD-CBS-742101-DP
Hardscape Plan – Sheet 2 of 3	TAS-CYP-CS-00-DRG-AUD-CBS-742102-DP
Hardscape Plan – Sheet 3 of 3	TAS-CYP-CS-00-DRG-AUD-CBS-742103-DP

# LEGEND

GENERAL	PAVING	EDGE / WALL	FURNITURE	TREE	SERVICES	CIVIL (LIGHTING)
PROJECT LAND BOUNDARY	PAV-101 PAVING - BLUESTONE - TYPE 01	EDG-117 BLUESTONE EDGE - FLUSH - TYPE 07	FRN-131 SEAT - BLUESTONE - TYPE 01	EXISTING TREE RETAINED	DRAINAGE WSUD INLET GRATES	NEW OVERHEAD SINGLE LIGHT
EXTENT OF WORKS LANDSCAPE ARCHITECTURE PACKAGE	PAV-102 PAVING - BLUESTONE - TYPE 02	EDG-141 GRANITE EDGE - FLUSH - TYPE 01	FRN-151 SEAT - STEEL - TYPE 01	LAN-501 PROPOSED TREE (IN SOFTSCAPE) DAY 01 EXTENT OF CANOPY	GRATED TRENCH DRAIN	EXISTING OVERHEAD SINGLE LIGHT
EXTENT OF OSD WORKS	PAV-106 PAVING - BLUESTONE - TYPE 06	EDG-143 GRANITE EDGE - FLUSH - TYPE 03	FRN-155 SEAT - STEEL - TYPE 05	LAN-501 PROPOSED TREE (IN PAVED SURFACE) DAY 01 EXTENT OF CANOPY	DRAINAGE OUTLETS + INLETS (INDICATIVE SIZES ONLY)	NEW POLE MOUNTED PEDESTRIAN AREA LIGHT
EXTENT OF ST PAUL'S COURT REINSTATEMENT	PAV-107 PAVING - BLUESTONE - TYPE 07	EDG-142 GRANITE EDGE - FLUSH - TYPE 02	FRN-156 SEAT - STEEL - TYPE 06	ALL PROPOSED TREES & SOIL TO BE SUPPLIED AND INSTALLED BY OTHERS IN ACCORDANCE WITH PS&TR PART C 4.4.1.2	DRAINAGE PIPES SUB-SURFACE / CONDUITS	EXISTING POLE MOUNTED PEDESTRIAN AREA LIGHT
CADASTRAL BOUNDARY	PAV-108 PAVING - BLUESTONE - TYPE 08	EDG-162 METAL EDGE - TYPE 02	FRN-157 SEAT - STEEL - TYPE 07	EXISTING TREE TO BE REMOVED AS PER THE CYP MELBOURNE METRO GIS	INSPECTION PIT	WALL MOUNTED LUMINARY
STRUCTURE ABOVE	PAV-121 PAVING - GRANITE - TYPE 01	EDG-164 METAL EDGE - TYPE 04	FRN-301 BOLLARD - STEEL - FIXED	EXISTING TREE ID	DRAIN PIT	LED POD LIGHTING
STRUCTURE BELOW	PAV-127 PAVING - GRANITE - TYPE 07	WAL-101 RETAINING WALL - BLUESTONE - TYPE 01	FRN-311 BOLLARD - STEEL - REMOVABLE - TYPE 01	SOFT LANDSCAPING	BLUESTONE GUTTERSTONE CHANNEL	
TUNNEL BELOW	PAV-128 PAVING - GRANITE - TYPE 08	WAL-103 RETAINING WALL - BLUESTONE - TYPE 03	FRN-322 BOLLARD - SECURITY RATED - FIXED - TYPE 02	LAN-211 - GARDEN BED ON STRUCTURE - TYPE 01	GROSS POLLUTANT TRAP	CIVIL (DRAINAGE)
SHEET LAYOUT	PAV-206 PAVING - CONCRETE - INSITU - TYPE 06	WAL-105 RETAINING WALL - BLUESTONE - TYPE 05	FRN-323 BOLLARD - SECURITY RATED - FIXED - TYPE 03		CCTV CAMERAS	EXISTING TRENCH GRATE
MATCHLINE	PAV-211 PAVING - CONCRETE - PRECAST - TYPE 01	WAL-106 RETAINING WALL - BLUESTONE - TYPE 06	FRN-333 BOLLARD - SECURITY RATED - REMOVABLE - TYPE 03		TRAFFIC PEDESTAL	
ENTRY	PAV-212 PAVING - CONCRETE - PRECAST - TYPE 02	WAL-107 RETAINING WALL - BLUESTONE - TYPE 07	FRN-401 TREE GRATE AND GUARD - TYPE 01		TRAFFIC PIT	EXISTING FIXTURE
UP RAMP / WALKWAY	PAV-213 PAVING - CONCRETE - PRECAST - TYPE 03	WAL-108 RETAINING WALL - BLUESTONE - TYPE 08	FRN-422 TREE SURROUND - TYPE 02		TRAM SIGNAL	TRAM POLE - EXISTING
1:20 LANDSCAPE GRADE (DIRECTION OF FALL)	PAV-214 PAVING - CONCRETE - PRECAST - TYPE 04	WAL-122 RETAINING WALL - GRANITE - TYPE 12	FRN-501 BIN - GENERAL - TYPE 01	MIS-123 BEYOND THE OCEAN OF EXISTENCE	EXISTING DRAINAGE PIT	PEDESTAL - EXISTING
1:20 CIVIL GRADE (DIRECTION OF FALL)	PAV-401 PAVING - ASPHALT		FRN-502 BIN - RECYCLE - TYPE 01	UP MIS-124 COMMEMORATIVE STEPS	ELECTRICITY DISTRIBUTION CABINET	EXISTING PIT
RL +15.123 LANDSCAPE FINISHED LEVEL	PAV-702 TGSi - HAZARD - STONE - TYPE 02	EMM-104 HANDRAIL - SINGLE - TYPE 04	FUTURE SPACE-PROOF SOLAR COMPACTOR BIN (BY CITY OF MELBOURNE)		TRAFFIC SIGNAL CONTROLLER	EXISTING ELECTRICAL CABINET
TS +15.123 TOP OF STAIRS SPOT LEVEL	PAV-712 TGSi - DIRECTIONAL - STONE - TYPE 02	EMM-106 HANDRAIL - SINGLE - TYPE 06	FRN-521 BIKE HOOPS (AS2890.3)		UTILITIES COMMUNICATION PIT	EXISTING SURVEY LINEWORK
TW +15.123 TOP OF WALL SPOT LEVEL		EMM-107 HANDRAIL - SINGLE - TYPE 07	FUTURE BIKE HOOPS (BY OTHERS) (AS2890.3)		UTILITIES ELECTRICITY PIT	EXISTING HVM BLOCK
EL +15.123 EXISTING LEVEL	TGSi (BY OTHERS)	EMM-113 HANDRAIL - DOUBLE - TYPE 03	MELBOURNE BIKE SHARE STAND (BY OTHERS)	UP STAIR / TERRACES		
SSL +15.123 STRUCTURAL SLAB LEVEL SPOT ELEVATION	ARCHITECTURE HAZARD TGSi	EMM-207 BALUSTRADE - TYPE 07	FRN-541 DRINK FOUNTAIN - TYPE 01	UP STT-102 STAIRS - BLUESTONE - TYPE 02	BUILDING SERVICES	SIGNAGE
TK +15.123 TOP OF KERB SPOT LEVEL	ARCHITECTURE DIRECTIONAL TGSi	EMM-208 BALUSTRADE - TYPE 08	FRN-544 DRINK FOUNTAIN - TYPE 04	UP STT-103 STAIRS - BLUESTONE - TYPE 03	HYDRAULIC PIT	STATION MARKER FLAG
RL +15.123 CIVIL FINISHED LEVEL	CIVIL HAZARD TGSi		FRN-545 DRINK FOUNTAIN - TYPE 05	STT-201 TERRACE - BLUESTONE - TYPE 01	ELECTRICAL PIT	STATION TOTEM SIGN
RL +15.123 ARCHITECTURAL FINISHED LEVEL	CIVIL DIRECTIONAL TGSi		FRN-631 CABINET - DISPLAN - TYPE 02	STT-202 TERRACE - BLUESTONE - TYPE 02	ELECTRICAL PIT	STREET SIGN
		FACE OF KERB	FRN-645 CABINET - ELECTRICAL - TYPE 05			
		UPSTAND ROAD KERB	FRN-646 CABINET - ELECTRICAL - TYPE 06			
		FLUSH ROAD KERB	FRN-642 CABINET - ELECTRICAL - TYPE 02 - RECESSED			
		KERB RAMP	FRN-643 CABINET - ELECTRICAL - TYPE 03 - RECESSED			
		PROPOSED HVM BLOCK	FRN-644 CABINET - ELECTRICAL - TYPE 04 - RECESSED			

**DEVELOPMENT PLAN SUBMISSION**

Project Drawing Number	TAS-CYP-CS-00-DRG-AUD-CBS-740001-DP	Revision	G.8
Drawn By	M.WATSON	Designed By	Y.SONG
Checked By	C.GUTHRIE	Ind. Review	
Approved		Approval Date	
Drawing Number		Revision	

Revised By	In Serv	Rev.	Date	Description	Designed	Checked	Ind. Rev.	Approv.
		G.8	31/10/2024	ISSUED FOR DEVELOPMENT PLAN	YS	CG		
		G.7	06/05/2024	ISSUED FOR DEVELOPMENT PLAN	YS	CG		
		G.6	11/09/2023	ISSUED FOR DEVELOPMENT PLAN	ES	CG		
		G.5	22/03/2022	ISSUED FOR DEVELOPMENT PLAN	ES	CG		
		G.4	14/02/2022	ISSUED FOR DEVELOPMENT PLAN	ES	CG		
		G.3	24/11/2017	ISSUED FOR DEVELOPMENT PLAN	H+WW	hr/w/GB		

This drawing has been prepared by, or compiled from information provided by, persons other than PTV. To the maximum extent permitted by law, PTV does not accept responsibility for, and makes no representations in relation to, the completeness, accuracy or quality of any information contained in this drawing. Each user of this drawing releases PTV from all and any loss, damage, cost, expense or liability in relation to the use of, or any reliance on, this drawing or the information contained in it.

All written dimensions take precedence over scaled dimensions.

This drawing is provided only for the information of the person or organisation to whom PTV provides it. It may not be provided to, or used by, any other person without PTV's prior written consent.

Consultant

Franchisee / Lessee

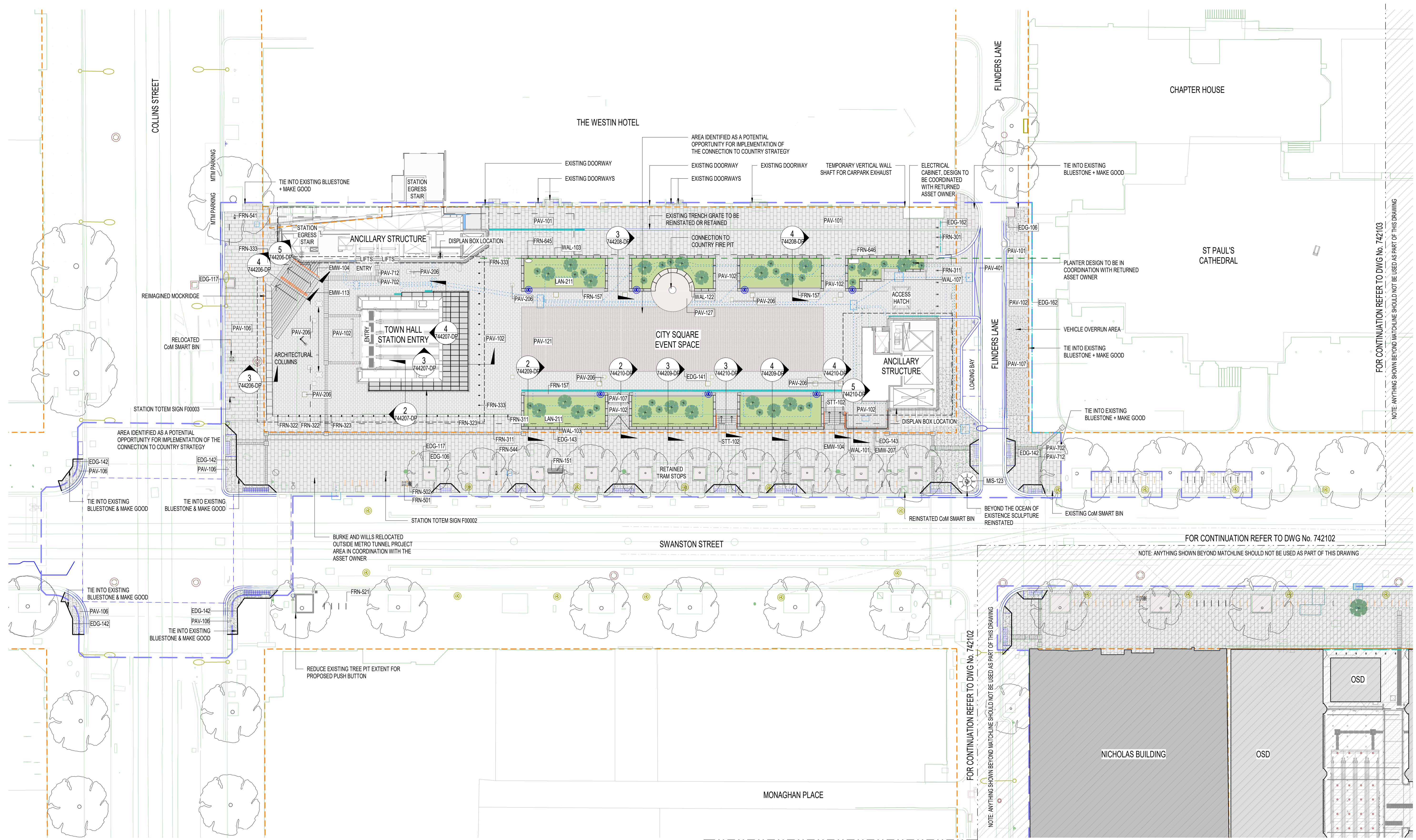
**ARCHITECTURAL TOWN HALL TOWN HALL PRECINCT LANDSCAPE ARCHITECTURE LEGEND**

Up Location East. North. ID#	Down Location East. North. ID#	Datum
------------------------------	--------------------------------	-------

File Name	SHEET 01 OF 01
Scale	1 : 100
Sheet Size	A1

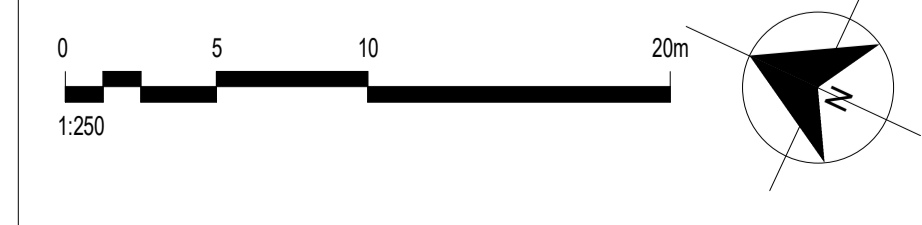
18/10/2024 12:44:02 PM

30/10/2024 4:03:15 PM



**LEGEND**

- PROJECT LAND BOUNDARY
- EXTENT OF WORKS LANDSCAPE ARCHITECTURE PACKAGE



Revised By	In Serv	Rev.	Date	Description	Designed	Checked	Ind. Rev.	Approv.
		G.11	31/10/2024	ISSUED FOR DEVELOPMENT PLAN	YS	CG		
		G.10	08/07/2024	ISSUED FOR DEVELOPMENT PLAN	YS	CG		
		G.9	06/05/2024	ISSUED FOR DEVELOPMENT PLAN	YS	CG		
		G.8	11/09/2023	ISSUED FOR DEVELOPMENT PLAN	ES	CG		
		G.7	22/03/2022	ISSUED FOR DEVELOPMENT PLAN	ES	CG		
		G.6	14/02/2022	ISSUED FOR DEVELOPMENT PLAN	ES	CG		
		G.5	16/02/2018	ISSUED FOR DEVELOPMENT PLAN	H+WW	hrv/GB		

This drawing has been prepared by, or compiled from information provided by, persons other than PTV. To the maximum extent permitted by law, PTV disclaims any responsibility for, and makes no representations in relation to, the completeness, accuracy or quality of any information contained in this drawing. Each user of this drawing releases PTV from all and any liability, cost, expense or liability in relation to the use of, or any reliance on, this drawing or the information contained in it.

All written dimensions take precedence over scaled dimensions.

This drawing is provided only for the information of the person or organization to whom PTV provides it. It may not be provided to, or used by, any other person without PTV's prior written consent.

Consultant

Franchisee / Lessee

**ARCHITECTURAL**  
**TOWN HALL**  
 TOWN HALL PRECINCT  
 LANDSCAPE ARCHITECTURE  
 HARDSCAPE PLAN - SHEET 01

Up Location East, North, ID# | Down Location East, North, ID# | Datum

**DEVELOPMENT PLAN SUBMISSION**

Project Drawing Number: TAS-CYP-CS-00-DRG-AUD-CBS-742101-DP | Revision: G.11

Public Transport Victoria (PTV) logo

Drawn By: M.WATSON | Designed By: Y.SONG  
 Checked By: C.GUTHRIE | Ind. Review  
 Approved | Approval Date

File Name: | Sheet No: SHEET 01 OF 03 | Drawing Number | Revision

Scale: 1:250 | Sheet Size: A1

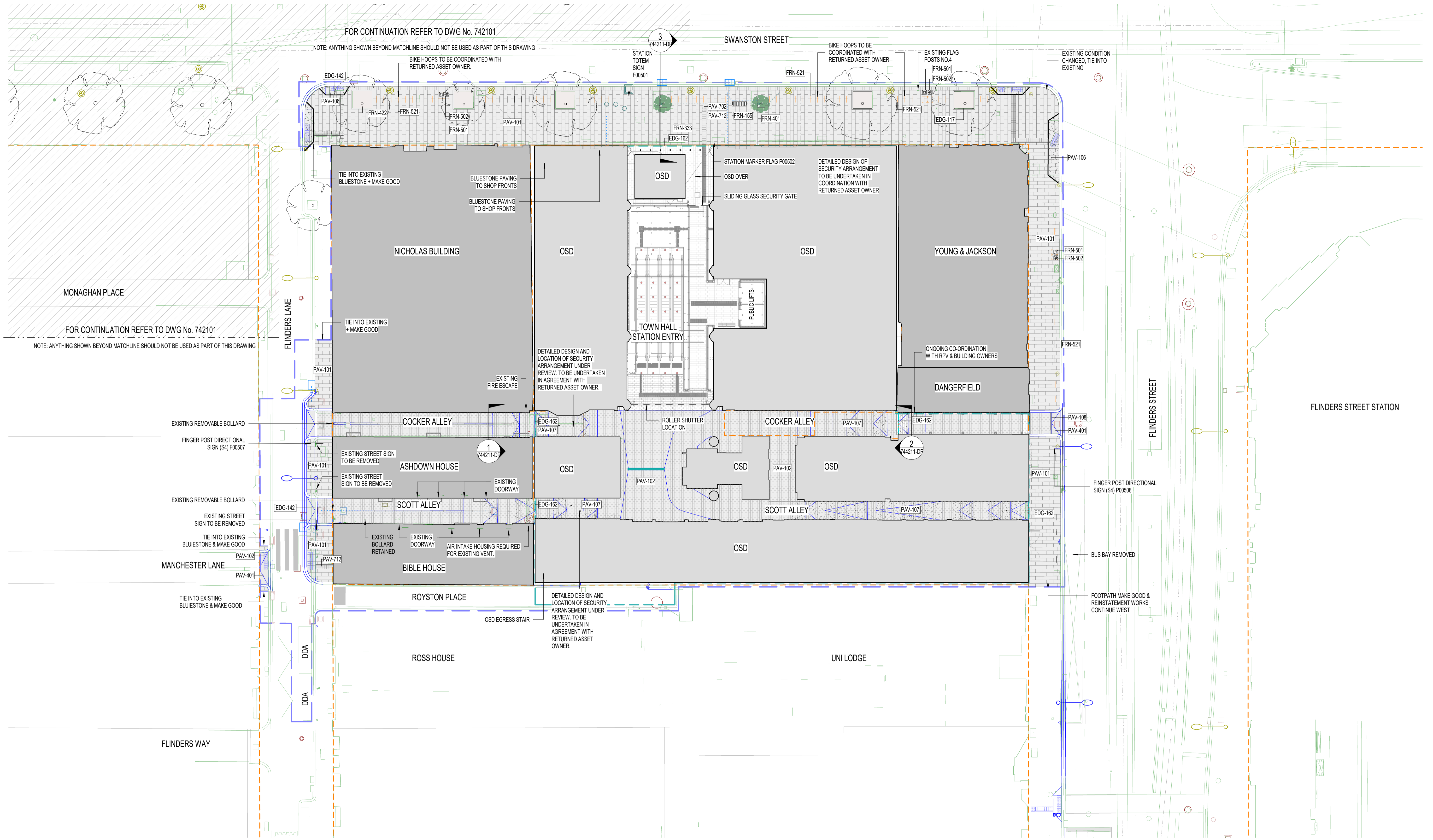
**NOT FOR CONSTRUCTION**

FOR CONTINUATION REFER TO DWG No. 742102

FOR CONTINUATION REFER TO DWG No. 742103

FOR CONTINUATION REFER TO DWG No. 742102

NOTE: ANYTHING SHOWN BEYOND MATCHLINE SHOULD NOT BE USED AS PART OF THIS DRAWING



FOR CONTINUATION REFER TO DWG No. 742101

NOTE: ANYTHING SHOWN BEYOND MATCHLINE SHOULD NOT BE USED AS PART OF THIS DRAWING

MONAGHAN PLACE

FOR CONTINUATION REFER TO DWG No. 742101

NOTE: ANYTHING SHOWN BEYOND MATCHLINE SHOULD NOT BE USED AS PART OF THIS DRAWING

MANCHESTER LANE

TIE INTO EXISTING BLUESTONE + MAKE GOOD

FLINDERS WAY

FLINDERS STREET STATION

**LEGEND**

- PROJECT LAND BOUNDARY
- EXTENT OF WORKS LANDSCAPE ARCHITECTURE PACKAGE



Revised By	In Serv	Rev	Date	Description	Designed	Checked	Ind. Rev.	Approv.
		G.12	31/10/2024	ISSUED FOR DEVELOPMENT PLAN	YS	CG		
		G.11	06/05/2024	ISSUED FOR DEVELOPMENT PLAN	YS	CG		
		G.10	12/02/2024	ISSUED FOR DEVELOPMENT PLAN	MW	CG		
		G.9	17/01/2024	ISSUED FOR DEVELOPMENT PLAN	MW	CG		
		G.8	11/09/2023	ISSUED FOR DEVELOPMENT PLAN	ES	CG		
		G.7	22/03/2022	ISSUED FOR DEVELOPMENT PLAN	ES	CG		
		G.6	14/02/2022	ISSUED FOR DEVELOPMENT PLAN	ES	CG		
		G.5	16/02/2018	ISSUED FOR DEVELOPMENT PLAN	H+WW	hrw/GB		

This drawing has been prepared by, or compiled from information provided by, persons other than PTV. To the maximum extent permitted by law, PTV takes no responsibility for, and makes no representations in relation to, the completeness, accuracy or quality of any information contained in this drawing. Each user of this drawing releases PTV from all and any loss, damage, cost, expense or liability in relation to the use of, or any reliance on, this drawing or the information contained in it.

All written dimensions take precedence over scaled dimensions.

This drawing is provided only for the information of the person or organisation to whom PTV provides it. It may not be provided, or used by, any other person without PTV's prior written consent.

Consultant

Franchisee / Lessee

**ARCHITECTURAL**

**TOWN HALL**

TOWN HALL PRECINCT

LANDSCAPE ARCHITECTURE

HARDSCAPE PLAN - SHEET 02

Up Location East, North, ID#

Down Location East, North, ID#

Datum

**DEVELOPMENT PLAN SUBMISSION**

Project Drawing Number: TAS-CYP-CS-00-DRG-AUD-CBS-742102-DP

Revision: G.12

**PUBLIC TRANSPORT VICTORIA PT**

Drawn By: M.WATSON

Designed By: Y.SONG

Checked By: C.GUTHRIE

Ind. Review

Approved

Approval Date

File Name

Sheet No. SHEET 02 OF 03

NOT FOR CONSTRUCTION

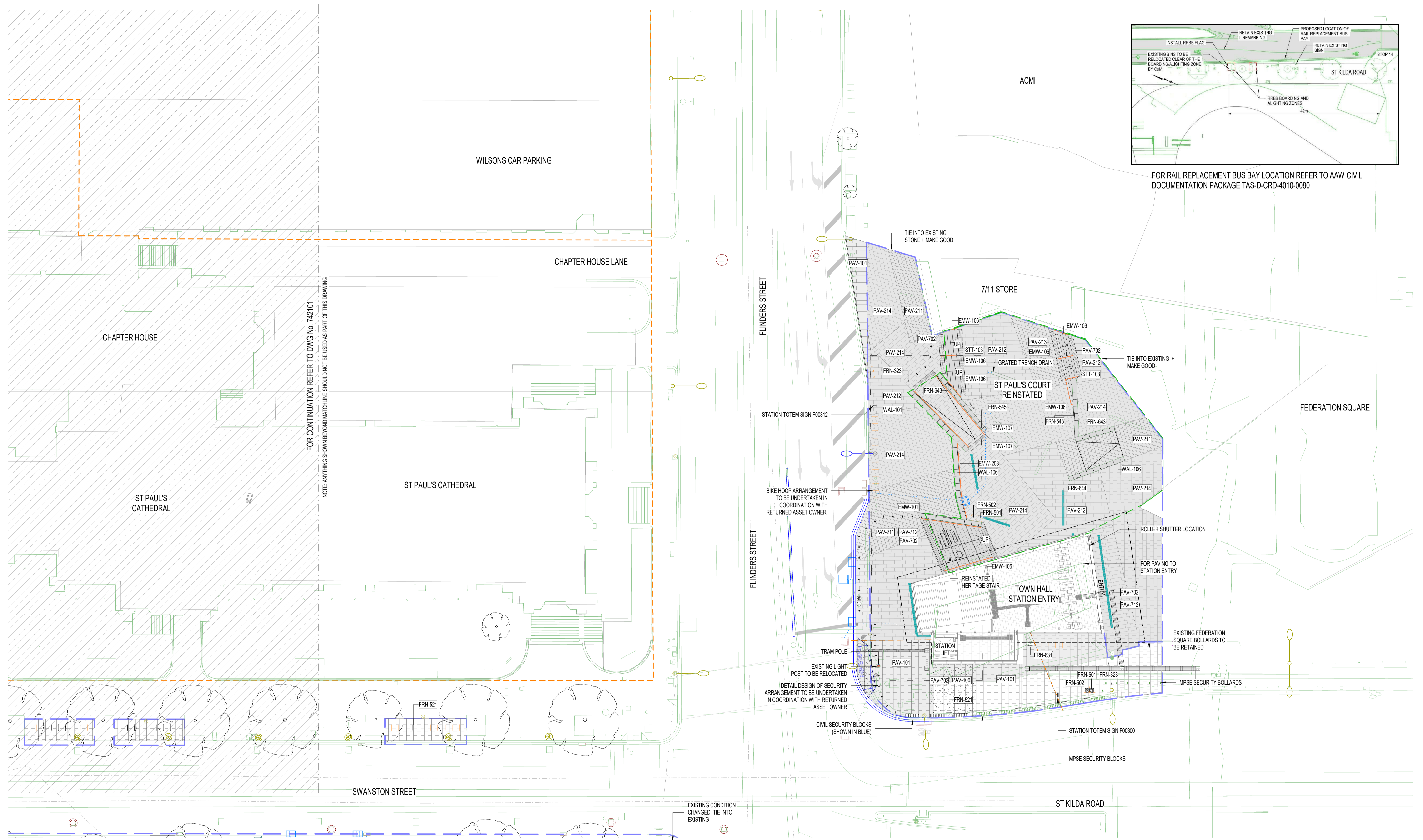
Scale: 1:250

Sheet Size: A1

Drawing Number

Revision

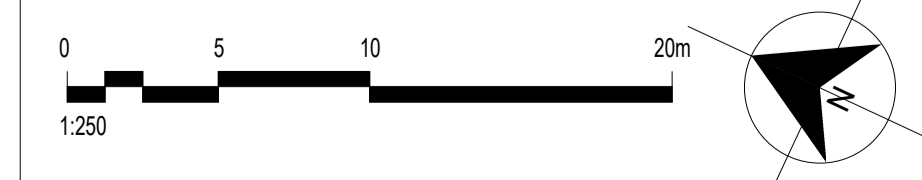
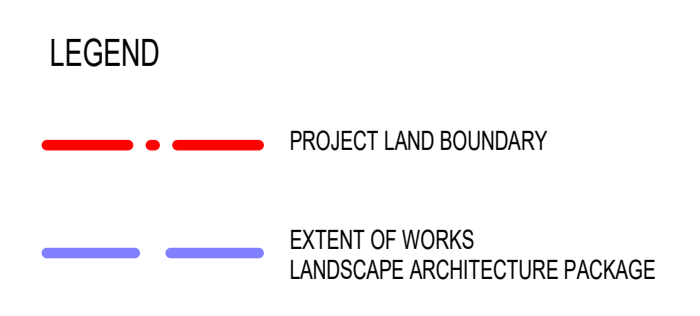
18/10/2024 3:26:40 PM



FOR CONTINUATION REFER TO DWG No. 742101  
NOTE: ANYTHING SHOWN BEYOND MATCHLINE SHOULD NOT BE USED AS PART OF THIS DRAWING

FOR RAIL REPLACEMENT BUS BAY LOCATION REFER TO AAW CIVIL DOCUMENTATION PACKAGE TAS-D-CRD-4010-0080

18/10/2024 3:27:27 PM



Revised By	In Serv	Rev.	Date	Description	Designed	Checked	Ind. Rev.	Approv.
		G.10	31/10/2024	ISSUED FOR DEVELOPMENT PLAN	YS	CG		
		G.9	06/05/2024	ISSUED FOR DEVELOPMENT PLAN	YS	CG		
		G.8	11/09/2023	ISSUED FOR DEVELOPMENT PLAN	ES	CG		
		G.7	22/03/2022	ISSUED FOR DEVELOPMENT PLAN	ES	CG		
		G.6	14/02/2022	ISSUED FOR DEVELOPMENT PLAN	ES	CG		
		G.5	16/02/2018	ISSUED FOR DEVELOPMENT PLAN	H+WW	hrw/GB		

This drawing has been prepared by, or compiled from information provided by, persons other than PTY. To the maximum extent permitted by law, PTY does not accept any liability for, and makes no representations in relation to, the completeness, accuracy or quality of any information contained in this drawing. Each user of this drawing releases PTY from all and any loss, damage, cost, expense or liability in relation to the use of, or any reliance on, this drawing or the information contained in it.

All written dimensions take precedence over scaled dimensions.

This drawing is provided only for the information of the person or organization to whom PTY provides it. It may not be provided to, or used by, any other person without PTY's prior written consent.

Consultant




Franchisee / Lessee



**ARCHITECTURAL**  
**TOWN HALL**  
CBD SOUTH PRECINCT  
LANDSCAPE ARCHITECTURE  
HARDSCAPE PLAN - SHEET 03

Up Location East, North, ID#  
Down Location East, North, ID#  
Datum

**DEVELOPMENT PLAN SUBMISSION**

Project Drawing Number		Revision	
TAS-CYP-CS-00-DRG-AUD-CBS-742103-DP		G.10	
		Drawn By	Designed By
		M.WATSON	Y.SONG
File Name SHEET 03 OF 03		Checked By	Ind. Review
		C.GUTHRIE	
Sheet No. SHEET 03 OF 03  <span style="border: 1px solid red; padding: 2px; color: red;">NOT FOR CONSTRUCTION</span>		Approved	Approval Date
Scale 1:250		Sheet Size A1	