



KENSINGTON COMMUNITY REFERENCE GROUP

Meeting 24

8 November 2022



Open actions



#	DATE RAISED	ACTION / ISSUE	OWNER	STATUS	DATE CLOSED
K20-1	20 July 2021	RNA to provide more information about crime prevention and security within the precinct, including systems and controls which will be implemented at a future CRG meeting.	RNA	Open – Update included in presentation	
K23-1	7 June 2022	CYP to investigate the issue of vehicles traveling through the bollards on Ormond Street and across the pedestrian crossing before joining Childers Street	CYP		
K23-2	7 June 2022	CYP to consider what can be done to address speeding cars on Childers Street.	CYP		
K23-3	7 June 2022	CYP to review the Kensington Road, Hobson Road and Childers Street lights sequence.	CYP		

Update on Action K20-1:

Crime prevention and security



- The public realm design has been developed with reference to the principles of Crime Prevention Through Environmental Design (CPTED) outlined within Safer Guidelines for Victoria, to ensure that a safe environment is provided for the public within the Western Portal Project Area.
- During design RNA held a workshop with RPV, CYP, MTM and City of Melbourne to identify public safety risks and CPTED implementation measures as-well-as sent our design to Victoria Police for their assessment and recommendations. Implementation measures included the following:
 - Overall increased visibility across to precinct to allow enhance the detection and provide a deterrence effect to antisocial and conventional criminal behaviours
 - Clear pathways and pedestrian crossing to the station and from JJ Holland Park to increase pedestrian traffic, providing natural surveillance at the station entrance



View from Ormond Street (looking south)



Childers Street (looking east)

Presenter: *Matthew Brajkovic (RNA)*

Update on Action K20-1:

Crime prevention and security



Landscaping design:

- Low planting to not conceal persons and reduce potential for loitering
- Planting species considers the impact pathway sight lines
- Small trees which have been selected and planted away from perimeter fence to deter trespassing
- Removal of tree stakes (i.e. preventing their use as weapons)
- Garden beds and plant species are well designed and easily maintained/managed to give a sense that the space is well cared and continued presence of natural surveillance

Lighting design:

- Public lighting designed to Australian Standards for public open spaces to enable passive surveillance and visibility
- Lighting design to ensure there are no dark patches to reduce potential for loitering
- Public artwork incorporated onto floodwall to deter graffiti
- MTM compliant perimeter fencing as a physical and visual deterrent to potential trespassers
- Incorporation of barriers to pedestrian areas to deter vehicle access
- Vandal resistant materials and finishes incorporated into designs (e.g. graffiti resistant paint, deep textures etc.)



South Kensington Station entrance



New open space opposite South Kensington station (looking east)

Presenter: Matthew Brajkovic (RNA)

Kensington urban design

Childers Street closure and public space works



To support the construction of a new pocket park and new public spaces at South Kensington Station, a section of Childers Street will be closed to through traffic from Thursday 3 November to April 2023. The work includes:

- Realigning Childers Street outside South Kensington station to enable the construction of a new station forecourt and station entrance canopy. These works will also increase space for pedestrians and enable significant improvements to the local streetscape
- Constructing and landscaping new garden beds outside South Kensington Station
- Constructing a new raised pedestrian crossing to connect the new station forecourt and pocket park
- Constructing new public spaces either side of egress building with new paving, seating, extensive landscaping and 25 bike storage hoops
- Installing new road surfaces, pathways and lighting around the station precinct
- Constructing a new pocket park at 135 Ormond Street, with new pedestrian pathways and mudstone retaining walls, which will feature additional landscaping, and planting a new lawn area which will extend JJ Holland Park.



View from South Kensington station (looking north)



South Kensington Station entrance

Presenter: Michael Prebeg (RNA)

Community engagement

Childers Street closure/public spaces and pocket park construction works



During September and October, RNA engaged with the local Kensington community about the Childers Street closure. This included:

- Works notice and construction update to residents
- eNews update to online subscribers
- Letters to detour and boom gate residents
- Letters to Lloyd Street Business Estate (LSBE)
- Public signage at the station precinct
- Door knocks and face to face meetings
- Emails and phone calls
- Meetings with LSBE and City of Melbourne
- A pop-up community information morning at South Kensington Station
- Free parking permit extension letters to Childers, Tennyson and Altona St residents

The Project Team will continue to oversee and manage a number of measures to assist with community concerns and feedback. This includes:

- Traffic calming measures for safety and noise mitigation e.g., speed humps and speed reduction signage
- Street parking impacts for residents impacted by the detour
- Installation of detour signage and wayfinding
- Installation of an over-height detection sensor boom gate on Tennyson Street with a camera system to ensure:
 - The correct use of the detour, ensuring only over-height vehicles are accessing the LSBE
 - Safe and compliant behaviour of over-height vehicles
 - Preventing rat-running of other vehicles



Presenter: Michael Prebeg (RNA)



Construction update

Presenters

Matthew Brajkovic (Senior Project Engineer – Western Portal, RNA)

Rod Kerr (Western Portal Construction Manager, CYP)

Construction program



Activity	November 22	December 22	January 23	February 23	March 23	April 23
Childers Street public spaces and pocket park construction works						
Rail tunnel fit out						
Signalling investigation and testing works						
Communications and signalling equipment rooms fit out						
Egress building fit out						

Program is indicative and subject to change

*Presenter: Matthew Brajkovic(RNA);
Rod Kerr (CYP)*

Construction update



CHILDERS STREET

Construction update



EGRESS BUILDING

Works update

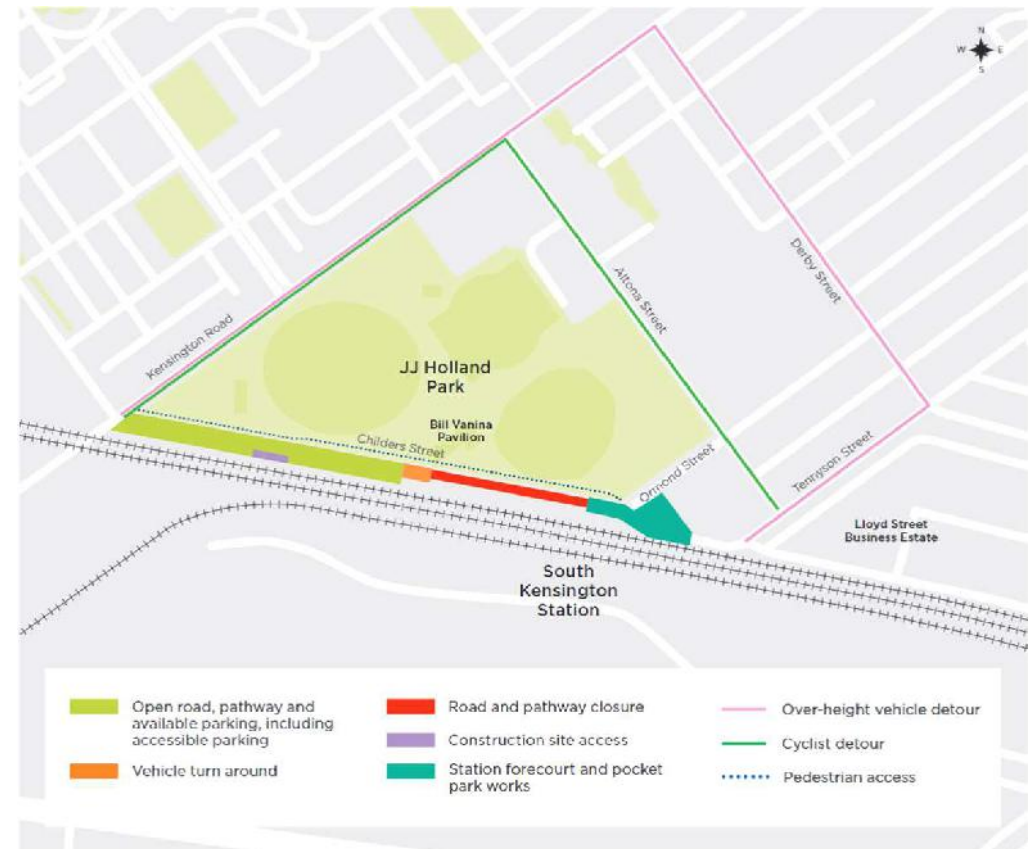
Childers Street public spaces and pocket park construction works



Station forecourt and pocket park works

- Works to construct a new pocket park and forecourt at South Kensington Station commenced on Thursday 3 November
- RNA will be removing existing materials and installing temporary fencing, including installing underground services and drainage within the works area
- Activity will involve excavators, compaction rollers, an asphalt machine, a non-destructive digging (NDD) truck and crews with hand tools
- These works will be undertaken during normal construction hours 7am to 6pm, Monday to Friday and 7am to 1pm, Saturdays.

The project will be taking a 2-3 week break over the Christmas holiday. Childers Street will remain closed. As per previous management of the detour, a 24/7 number will be staffed if there are any issues with the boom gate.



Presenter: Matthew Brajkovic(RNA)

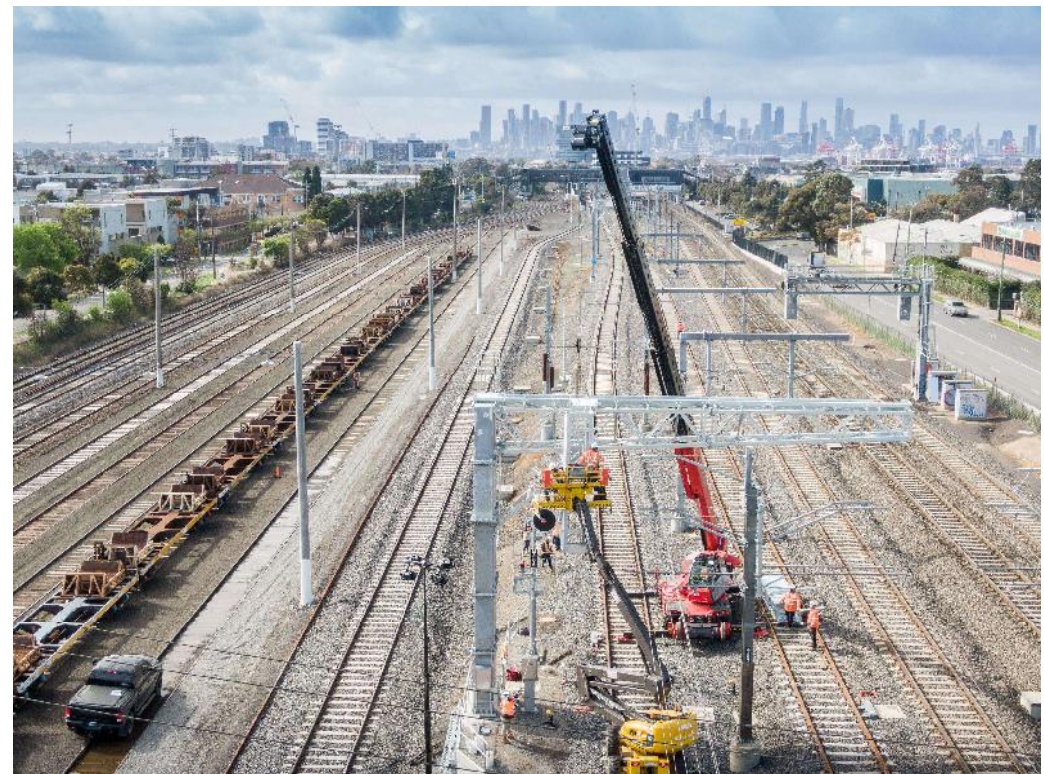
Works update

Rail corridor between North Melbourne and Sunshine



In Mid-December, RNA will undertake 24-hour rail works between South Kensington and Footscray. Works include:

- Cable installation and signalling works on the upside (city bound) of South Kensington Station
- Traffic management will be in place to facilitate a cable truck on Childers Street (between Ormond and Tennyson Street)
- NDD and installation of rail corridor infrastructure foundations
- Signalling structure works
- Track installation and connection of existing track onto the decline structure
- Further information regarding works and disruptions will be provided in early December.



Presenter: Michael Prebeg (RNA)

Works update

Egress Building



- Final fitout works are underway within the egress building including level one ceiling and door installation
- Installation of a substation at the B1 level is now underway and is being installed via the decline structure
- Over the past two weeks, scaffold access has been built, formwork installed and steel fixing completed.



Egress building fit-out

Works update

Decline Structure



- Decline structure is in use for all deliveries of material for rail tunnel fit-out
- A track slab gantry will be delivered to site on Wednesday evening (9 November 2022)
- Due to the size it will need to be delivered outside standard construction hours, delivery will be between 11pm Wednesday 9 November and 5am Thursday 10 November
- Some station carparks will be occupied as the gantry is delivered to site



Decline structure at Western Portal

Works update

Rail Tunnel fit-out



- The first sections of rail track are being transported from the decline structure, up the tunnel through to just north of State Library Station, ready for installation of rails on the track slab
- Works to install permanent lighting and other mechanical, electrical and plumbing (MEP) devices are underway between the Western Portal and State Library Station are ongoing.
- These works are occurring in parallel to track form installation works.



Rail tunnel fit-out



Community update

Communication and engagement



Notifications and communications

Current:

- Childers Street closure notice – October
- LSBE detour notice – October
- Closure and detour letters – October
- Bi-monthly construction update – October and November
- eNews update – October
- Metro Tunnel Facebook update, Childers Street works and pop-up – October

Upcoming:

- Childers Street works notice – November
- 24-hour rail works notice - December
- Bi-monthly construction update – December and January

Meetings

- City of Melbourne fortnightly progress meeting
- LSBE regular online meetings

Next CRG

- TBC 2023

Presenters: Michael Prebeg (RNA) & Rob Mair (CYP)



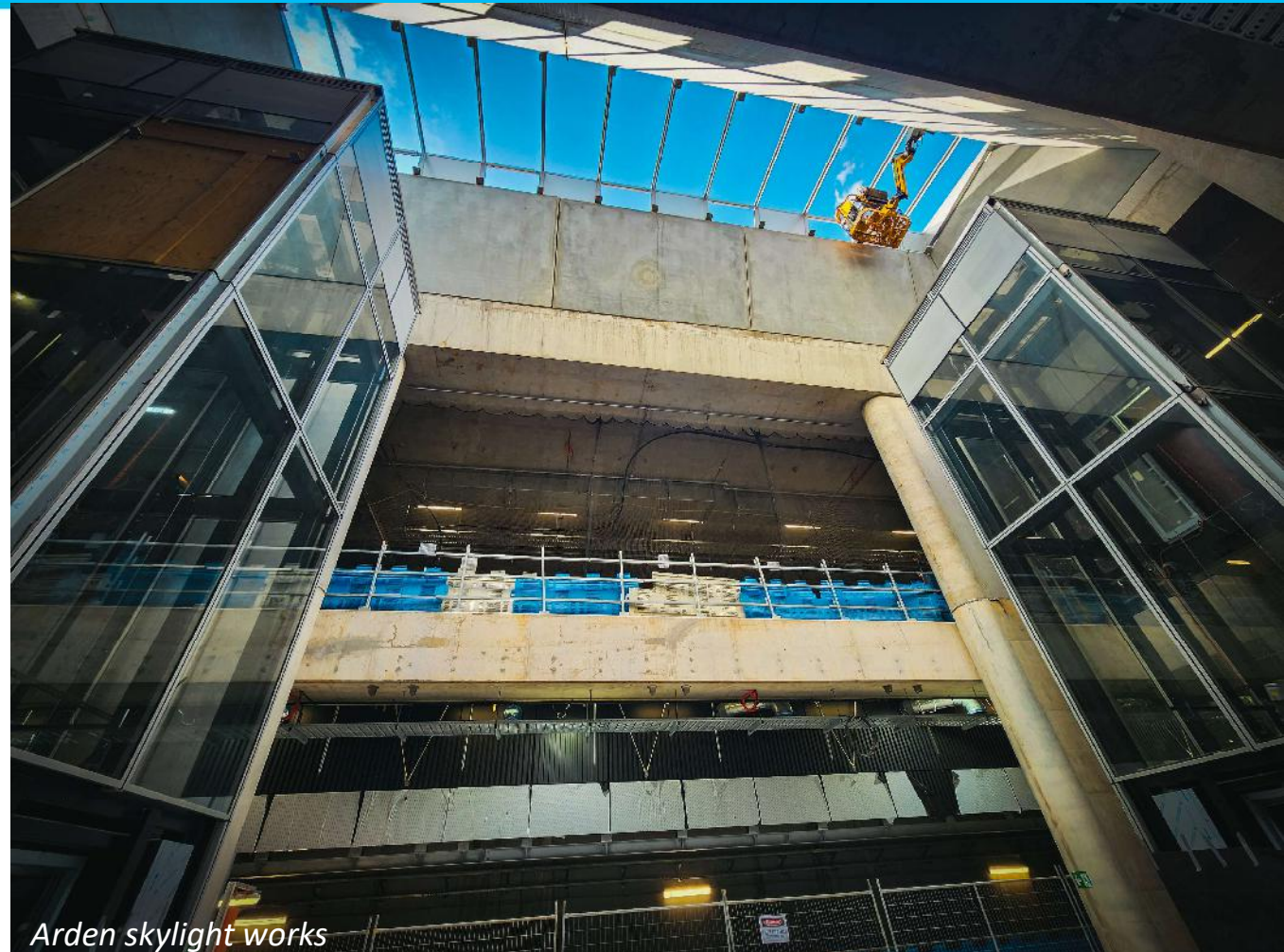
Project update

Arden Station

Construction update



- Two of the three skylights in Arden Station have been installed and glazed
- At platform level, the installation of platform screen doors has begun
- On surface level, works around the station entry have commenced to create the new terraced area as part of the final design



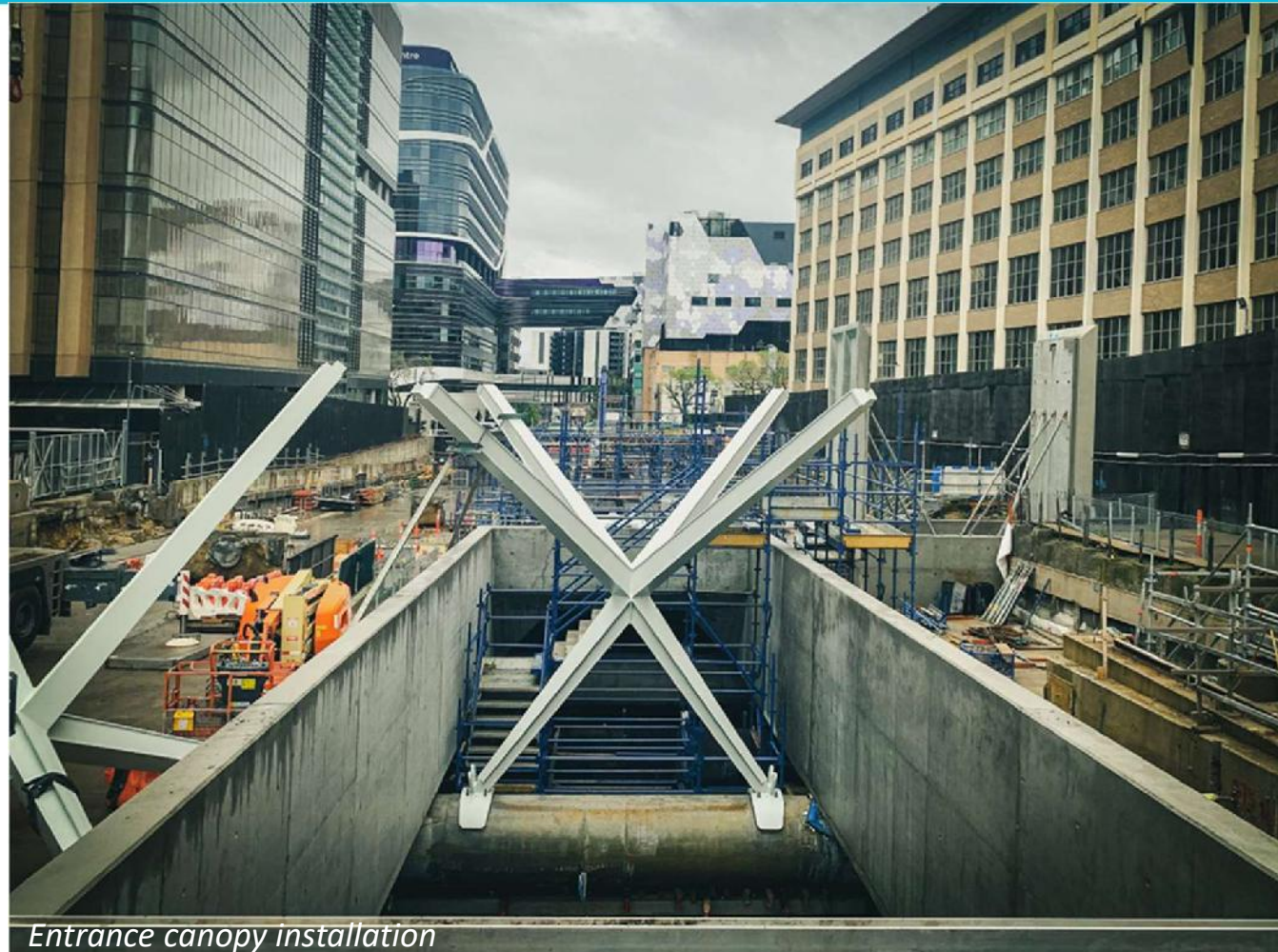
Arden skylight works

Parkville Station

Construction update



- In the station box, architectural and mechanical, electrical and plumbing fit out works are ongoing
- On surface level, steel and precast elements continue to be installed for Parkville Station's entrances
- Staged reinstatement and public realm works have commenced on Grattan Street between Leicester and Bouverie streets



Entrance canopy installation

State Library Station

Construction update



- The first arch pour was recently completed in the Little La Trobe adit. Eventually the adit will house escalators which will transport passengers to and from the Station platform
- Shaft construction is continuing at La Trobe, Little La Trobe and Franklin St East and West sites
- Platform rail tunnel construction is continuing beneath Swanston St
- Station entrance works are continuing with construction of core walls and columns.



Town Hall



- Hoardings have been installed at platform level and excavation works have commenced at Flinders Street Station in preparation for the installation of 6 lifts from platform level to subway
- Acoustic shed removal works are well underway at City Square
- Concrete structure works continue at City Square and Flinders Quarter
- Lining and structures works continuing within the station cavern, rail tunnels and adits

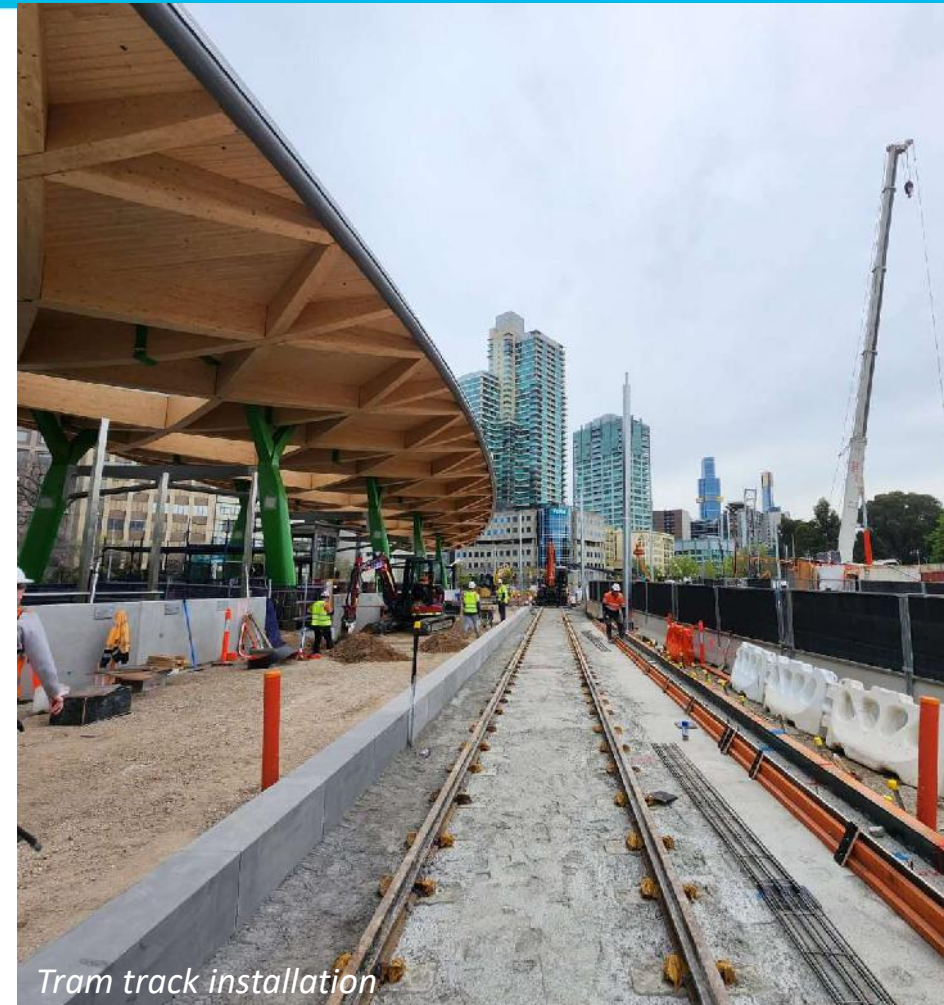


Anzac Station

Construction update



- Works on the canopy over the new tram/train interchange are nearly complete
- Platform precast installation at platform level is now complete
- Excavation is now underway on the second stage of the entrance adjacent to the Shrine of Remembrance
- The southbound lane of St Kilda Road has been realigned and works are underway inside site to build the new tram alignment around the tram platform
- Reminder: Buses will replace trams on St Kilda Road between the Arts Centre and Commercial Road from 27 November until 17th December 2022



Tram track installation

Eastern Portal

Construction update



- South Yarra Siding Reserve finishing works are ongoing. Landscaping has been completed.
- Works to finish the pavement, fencing, line marking, underground conduits, asphaltting the footpath and landscaping works will continue until the end of the year
- The substation electrical fit-out works have been completed. Stage one commission is scheduled for end-November and stage two will be sometime in the first quarter of 2023



Presenter: Matthew Brajkovic(RNA)

Questions