



LEVEL CROSSING REMOVAL PROJECT

Major construction underway at Narre Warren Station.

LEVEL CROSSING REMOVAL UPDATE

WEBB STREET
NARRE WARREN
MARCH 2023

Getting ready to build the bridge at Webb Street

As part of the Victorian Government's commitment to removing 110 dangerous and congested level crossings, we're removing the level crossing at Webb Street, Narre Warren.

We're removing the level crossing by building a new elevated rail bridge over Webb Street. We'll also build a new Narre Warren Station with improved and modern facilities for the community to enjoy.

We've been working over the past few months to prepare the site for major construction. Our crew has worked to set up site compounds, relocate underground services and utilities, and remove some vegetation and trees in the project area. Thank you for your patience while we've carried out these works.

Now that we are in major construction, we'll begin to build the foundations for the bridge. Over the next year, the new elevated rail bridge and new and improved Narre Warren Station will take shape.

By 2025, the Webb Street level crossing will be gone and the new Narre Warren Station will be open, helping make the Pakenham line level crossing free.

Visit levelcrossings.vic.gov.au/webb-street for more information about the project.

Project benefits

-  Improving safety and connections for drivers, pedestrians and cyclists
-  Easing congestion and reducing travel times
-  New modern facilities at Narre Warren Station
-  Making way for more trains to run more often
-  Stimulating economic growth by creating hundreds of jobs



SIGN UP FOR PROJECT UPDATES
levelcrossings.vic.gov.au

**VICTORIA'S
BIG BUILD**

VICTORIA
State Government

WHAT YOU'LL SEE IN 2023

This year, our crew will be:

- Building the foundations of the new rail bridge and station by drilling more than 110 holes, up to 25 metres deep and reinforcing them with steel and concrete
- Constructing the new rail bridge and Narre Warren Station
- Continuing utility and essential service relocation works
- Installing new drainage systems
- Making way for and building the new rail track



Major construction underway at Webb Street.

Connections to Country

The new station design is based on the Stories of Country told by the Traditional Owners to recognise Narre Warren.

Narre Warren was traditionally a pathway of travel from west to east, and from the water in the south. The area is known as a place of movement and coming together.

In collaboration with the Registered Aboriginal Party, the **Bunurong Land Council Aboriginal Corporation**, the design, materials, landscaping and structural elements of the new station and precinct have been selected to connect meaningfully with these Stories of Country.

The station stairs reflect these Stories of Country. The distinct wave shape and reflective finish of the stairways represents the flow of water and people throughout the area, welcoming travellers as they pass through.



*New Narre Warren Station entry looking south west.
Artist impression, subject to change.*



Scan the QR code or visit levelcrossings.vic.gov.au/webb-street-narre-warren to learn more about the Webb Street Traditional Owner design collaboration.

Solar powered site

We're replacing traditional diesel-powered mobile generators with 100% renewable solar energy.



Site facilities at our Deblin Drive site compound will soon be powered by a **40kw solar system** connected directly to the grid, **replacing the need for diesel-power or grid electricity**. The generator will power the site offices for our crew, providing about **54,500 kilowatt hours of renewable energy each year**, which is the same amount of energy needed to charge 4.4 million smart phones.

We're going solar at our other sites too. Recently, we finished works to remove the level crossing at Old Geelong Road in Hoppers Crossing. Once the site was shut down, we were able to relocate solar panels to the Webb Street site office as well as the Mt Derrimut Road site in Deer Park. We plan to re-use the panels at further locations, once both projects are complete.

Building bridge foundations at Webb Street

The new elevated rail bridge will be about one kilometre long and will span across Webb Street and Narre Warren-Cranbourne Road.

In the coming weeks, our crew will begin to build the concrete foundations of the bridge. We'll do this by drilling and reinforcing more than **110 holes** deep into the ground. These reinforced holes, called **piles**, will support the new rail bridge and station.



The new rail bridge over Webb Street looking north east. Artist impression, subject to change.

Changes to the way you travel

Our works may change the way you travel around Narre Warren.

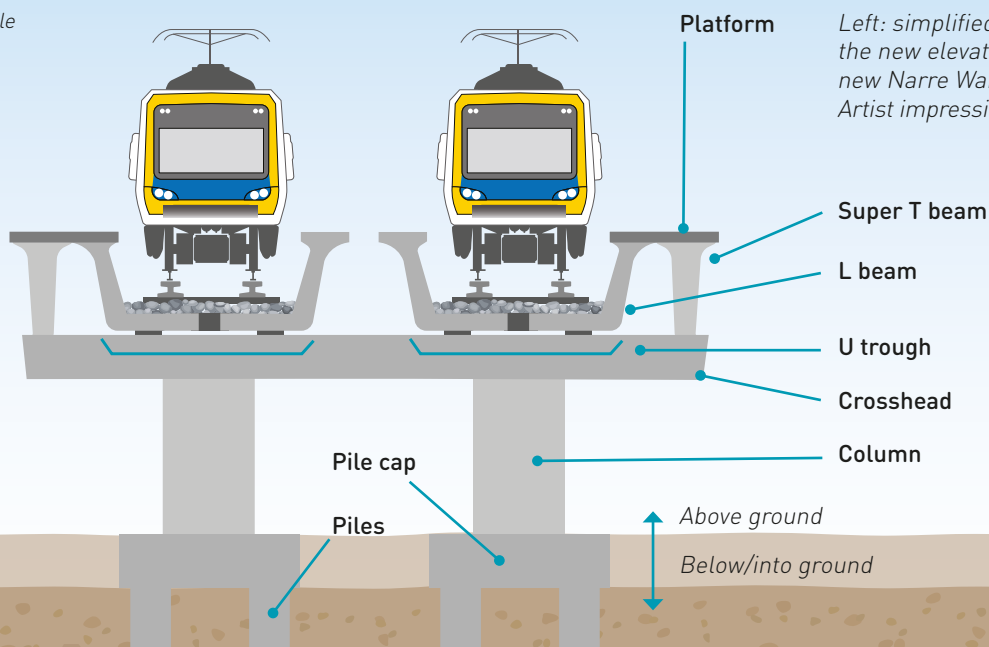


We will let the community and local businesses know in advance of any works or travel disruptions.

For your safety, and the safety of our workers, follow the detour signs in place and allow extra time for your journey.

Visit bigbuild.vic.gov.au/disruptions for more information about travel impacts in the area.

Drawing not to scale



Left: simplified cross-section of the new elevated rail bridge at the new Narre Warren Station. Artist impression, subject to change.



Narre Warren Village looking towards the east side of Webb Street.

Shop local in Narre Warren

We're encouraging the community and our workforce to support local businesses while we work in the area.

Come and check out the wide range of offerings in Narre Warren. From delicious food and grocery treats to opportunity shops and beauty services, the local shops have something for everyone.

If you run a local business and would like to speak to a project member, call us on **1800 105 105** or email contact@levelcrossings.vic.gov.au

Project timeline

- ✓ **2021 – early 2022**
 - Early investigations
- ✓ **January 2022**
 - Design solution confirmed
 - Site investigations continue
- ✓ **March 2022**
 - Concept designs released and community engagement
- ✓ **August 2022**
 - Final designs released
 - Early preparatory works start
- ✓ **Late 2022**
 - Major construction starts
- **2025**
 - Level crossing removed

* Timeline above subject to change

Progress on the Pakenham Line

The Pakenham Line will be level crossing-free by 2025.

As part of the completed Clyde Road, Berwick level crossing removal, an upgraded bus interchange at Berwick Station and new walking and bike riding connections were delivered in October 2022.

In Pakenham, we're continuing to build the 2.5 kilometre rail bridge over McGregor Road, Main Street and Racecourse Road. The new Pakenham and East Pakenham stations and community spaces will be open by 2024.

Major construction to build the new road bridge over the rail line at Brunt Road, Beaconsfield will start in early 2023. Site investigations at Station Street, Beaconsfield are underway and construction will be completed by 2025.

By 2025, we'll remove the level crossing at Progress Street in Dandenong South, with a new road bridge connecting Progress Street and Fowler Road, and close the level crossing at Station Street, Officer.



Open space corridor at the new Pakenham Station, looking west towards Main Street. Artist impression, subject to change.

Keep in touch



- Subscribe to email updates at levelcrossings.vic.gov.au/subscribe and select Webb Street, Narre Warren
- Subscribe to SMS updates by texting **WEBB** to **0427 840 967**
- If you have any questions or would like more information, call us 24/7 on **1800 105 105** or email contact@levelcrossings.vic.gov.au
- Follow us on **social media** or send us a private message on our Facebook page.

CONTACT US

contact@levelcrossings.vic.gov.au

1800 105 105

Level Crossing Removal Project
GPO Box 2392, Melbourne VIC 3001

Follow us on social media
[@levelcrossings](https://www.facebook.com/levelcrossings)



Translation service – For languages other than English, please call 9209 0147.

Please contact us if you would like this information in an accessible format.

If you need assistance because of a hearing or speech impairment, please visit relayservice.gov.au