



# LEVEL CROSSING REMOVAL PROJECT

The new road bridge at Camms Road.  
Artist impression, subject to change.

# LEVEL CROSSING REMOVAL UPDATE

CAMMS ROAD CRANBOURNE

MAY 2023

## Major works continue

The Victorian Government is duplicating the Cranbourne Line, removing the last two level crossings on the line and have built a new Merinda Park Station – improving safety, reducing congestion and allowing for more trains, more often. Once complete, the Cranbourne Line will be completely level crossing free.

We've been working hard throughout 2022 to prepare the area for the new road bridge.

In 2023, we will start to construct the road bridge over the Cranbourne Line. The new road bridge will free up traffic for the 12,000 vehicles that pass through the crossing each day.

The new road bridge and surrounding areas will include new walking and cycling connections, improving local connections to the station precinct.

The local area will also be enhanced with the planting of about 300 trees and shrubs as part of the project.

The Victorian Government is also delivering 400 new and upgraded car parks at Cranbourne Station as part of the Car Parks for Commuters program and Growth Area Incentive Contribution.

The Camms Road level crossing will be gone for good in 2024, one year ahead of schedule.

### Project benefits

-  More reliable travel times
-  300 new trees and shrubs
-  New walking and cycling connections
-  Improved lighting to create safer spaces



SIGN UP FOR PROJECT UPDATES  
[levelcrossings.vic.gov.au](https://levelcrossings.vic.gov.au)

VICTORIA'S  
BIG BUILD

VICTORIA  
State Government

# PILES FOR MILES IN CRANBOURNE

Over the past few months, we've been busy:

- relocating utilities to make way for the new road bridge
- creating a cul-de-sac at Sharpe Street, closing it to Camms Road
- constructing 35 piles that will support the new road bridge.



Piling rig drilling into the ground.



35 pile cages were installed at Camms Road.



These piles will support the new road bridge



Pile cage being lowered.

The finished product from piling works.

# THIS YEAR THE BRIDGE WILL TAKE SHAPE

Over the next few months, you'll start to see the first sections of the bridge begin to take shape.



Works will continue along Camms Road as we construct abutment walls on either side of the rail corridor. These walls will form the foundation for the bridge deck above the Cranbourne Line. To construct the walls, concrete will be poured into mould-like formwork which is reinforced with steel. Once the concrete dries, the formwork is removed and the abutment walls will be left standing ready to support the bridge deck.

Service relocation works will also continue throughout the project area. This will include removing the overhead power lines to make way for the new road bridge.



*Abutment wall being constructed near the level crossing. Over the coming months the walls will be completed.*

# CRANBOURNE'S PAST AND PRESENT INSPIRE NEW BRIDGE COLOUR

Bridge colour pays homage to Cranbourne Royal Botanic Gardens and Cranbourne meteorite.

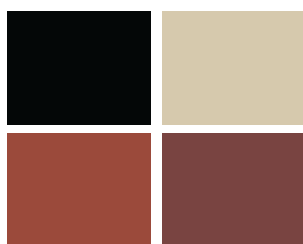
In 2021 we heard that locals wanted the road bridge to resemble local colours and landscaping that enhanced the local area.

Ochre tones have been chosen for the new bridge, inspired by the Cranbourne Gardens and the Cranbourne meteorite discovered in 1854.

The wall panels also include a combination of alternating textured and smooth finishes over a geometric pattern to create a graphic that can be seen from afar.

## New plaza linking new and existing pedestrian paths.

The plaza is a shared use area that will connect the new and existing pedestrian paths around the road bridge. The area will include seating, landscaping and soft form mounds in colours that also resemble the Cranbourne Royal Botanic Gardens and Cranbourne meteorite.



Colour palette for the bridge.

The Cranbourne meteorite is the second largest meteorite to have been found in Australia. To date, 13 fragments have been found.

Cranbourne meteorite.



Textured pattern on the walls of the new road bridge. Artist impression only, subject to change.



*New pedestrian and shared use paths over the bridge.  
Artist impression only, subject to change.*



*Fairfield Street will pass under the new road bridge and connect to Camms Road and Murray Court via a roundabout.  
Artist impression only, subject to change.*

## Trivia: WIN a Cranbourne Royal Botanic Gardens voucher

Scan the QR code to answer our trivia for your chance to win a **\$100 voucher** for the Cranbourne Royal Botanic Gardens gift shop.

- What year was the first Cranbourne meteorite discovered?
- How many piles were installed to form the foundations of the new Camms Road bridge?



## Changes to the way you travel around the area

Type	Travel change
Road	<ul style="list-style-type: none"> <li>• Camms Road will be closed between Bourke Road and Cranbourne Place each night between <b>8pm and 5am</b> from <b>Monday 5 June to Thursday 8 June 2023</b>. Detour via South Gippsland Highway, Duff Street and Bourke Road.</li> <li>• Fairfield Street will be closed between Camms Road and Station Street each night between <b>8pm and 5am</b> from <b>Monday 5 June to Thursday 8 June 2023</b>.</li> </ul>
Rail	Buses will replace trains on the Cranbourne Line between Dandenong and Cranbourne from <b>7:45pm to last service</b> each night between <b>Monday 5 June and Thursday 8 June</b> .
Parking	On-street parking along the northbound lane of Fairfield Street will be closed between Station Street and Duff Street each night from <b>Monday 5 June until Thursday 8 June 2023</b> .
Pedestrian	Pedestrian access on the northern side of Camms Road between Murray Court and Highview Avenue is <b>closed until 2024</b> .
Bus	<ul style="list-style-type: none"> <li>• There will be impacts to bus stops on Routes 760, 791, 795, 796, 798, 897 and 898 while Camms Road is closed. Alternative bus stops are located at Bowen Street/High Street, Camms Road/South Gippsland Highway, and on Central Parkway on the corner of Genista and Geebung roads. Visit the PTV website for more information.</li> <li>• The bus stop on the northern side of Camms Road, near Highview Avenue will be closed from <b>Monday 5 June until Thursday 8 June 2023</b>.</li> </ul>



The Camms Road level crossing removal project will require changes to local roads.

**i Stay up to date** Sign up for email updates at [levelcrossings.vic.gov.au/subscribe](https://levelcrossings.vic.gov.au/subscribe) Connect with us on social media at [facebook.com/levelcrossings](https://facebook.com/levelcrossings)

## Project timeline

- Mid 2021**
  - Design solution confirmed
  - Community consultation
  - Early site investigations
- Early 2022**
  - Contract award
  - Early works
  - Site establishment
- Mid 2022**
  - Major works commence
- By 2024**
  - Level crossing removed

*\*Timeline above subject to change*

**CONTACT US**  
 contact@levelcrossings.vic.gov.au  
 1800 105 105  
 Level Crossing Removal Project  
 GPO Box 2392, Melbourne VIC 3001

Follow us on social media  
 @levelcrossings

[f](#) [t](#) [i](#) [v](#) [in](#)

**Translation service** – For languages other than English, please call 9209 0147.  
 Please contact us if you would like this information in an accessible format.  
 If you need assistance because of a hearing or speech impairment, please visit [relayservice.gov.au](https://relayservice.gov.au)