

Construction update

South Yarra

October 2023

Major construction of key structures for the Metro Tunnel's tunnel entrance in South Yarra are nearing completion, with construction works now beginning to reinstate the surrounding infrastructure and roads. This update provides an outline of current and upcoming works in your area throughout October 2023.

Construction snapshot

Throughout September we've started works to reinstate surrounding roads, kerbs and seating.

We've also completed the egress building façade, completed finishing works and much more.

In October, works within the South Yarra precinct will include:

- Egress building construction
- Osborne Street public realm and reinstatement works
- Arthur Street resurfacing works
- William Street speed hump repainting works
- Removal of temporary traffic lights at the intersection of Arthur and Chapel streets
- Landscape maintenance works and installation of public artwork.

Further information on these works can be found overleaf or at metrotunnel.vic.gov.au

When are we working?



Normal construction hours

7am to 6pm, Monday to Friday
7am to 1pm, Saturdays



Out of hours

Some works are required to take place out of normal construction hours.



24 hours

24 hour works are sometimes required during peak construction activities.

Works in your area

Osborne Street

Egress building construction

Ongoing until the end of October 2023



- Building and fit out trades will continue within the egress building 24 hours a day.

Reinstatement works

Ongoing to early-2024



- Construction of kerbs, footpath, road and hard landscaping will continue in October. Works on the road will require a temporary road closure and the temporary removal of on-street parking
- Rebuilding the traffic island opposite 139 Osborne Street, requiring a temporary closure of Osborne Street and temporary removal of the on-street parking. More information will be provided closer to the date of these works
- The site sheds on Osborne Street were removed in late September, using a crane to lift them onto trucks. A temporary road closure will be required in order to safely remove some remaining sheds under the power lines
- Once removed, finishing works on the Osborne Street shared use path bridge, including the remaining landscaping works along the southern side of Osborne Street, will begin.

William Street

Speed hump repainting works

In October



- Works to repaint the existing speed hump between 16 William Street and 21 William Street will require a temporary detour to and from Toorak Road and Arthur Street
- This activity will involve crews with hand tools and is expected to generate low levels of noise
- Access to residential properties will be maintained at all times, with temporary detours in place while this activity is being undertaken.

Arthur Street

Traffic light removal works

7pm to 6am, for two nights in mid-October



- Works to remove the temporary traffic lights, install signage and linemark at the intersection of Arthur and Chapel streets will take place in mid-October
- To minimise disruption and to ensure works are performed safely, changes to traffic conditions and lane closures at the intersection of Arthur and Chapel streets will be required for **two nights between 7pm to 6pm.**

Resurfacing works

Mid to late October



- As part of works to reinstate the surrounding infrastructure and road in South Yarra, we will be re-asphalting the road surface on Arthur Street between the William Street junction and Chapel Street
- These works will require the use of an asphalt profiler, asphalt paver, excavator, compaction equipment and delivery trucks
- These works are expected to generate medium levels of noise and some vibration with some high-level noise during the removal and relaying of asphalt
- A section of Arthur Street will be closed between 7am and 5pm while resurfacing works are in progress. Traffic management will be in place along Portland Place, Arthur and William streets to help facilitate local access to residential and business properties
- After re-asphalting has been completed works will take place to repaint line marking along Arthur Street. Please expect some changes to traffic conditions during these works
- More information about this upcoming works will be provided closer to date.

Chapel and Palermo streets

Signage installation and line marking

Mid October



- Works to install signage and linemark along sections of Chapel and Palermo streets will take place in mid-October
- To safely do these works, there will be lane closures along sections of Chapel and Palermo streets.

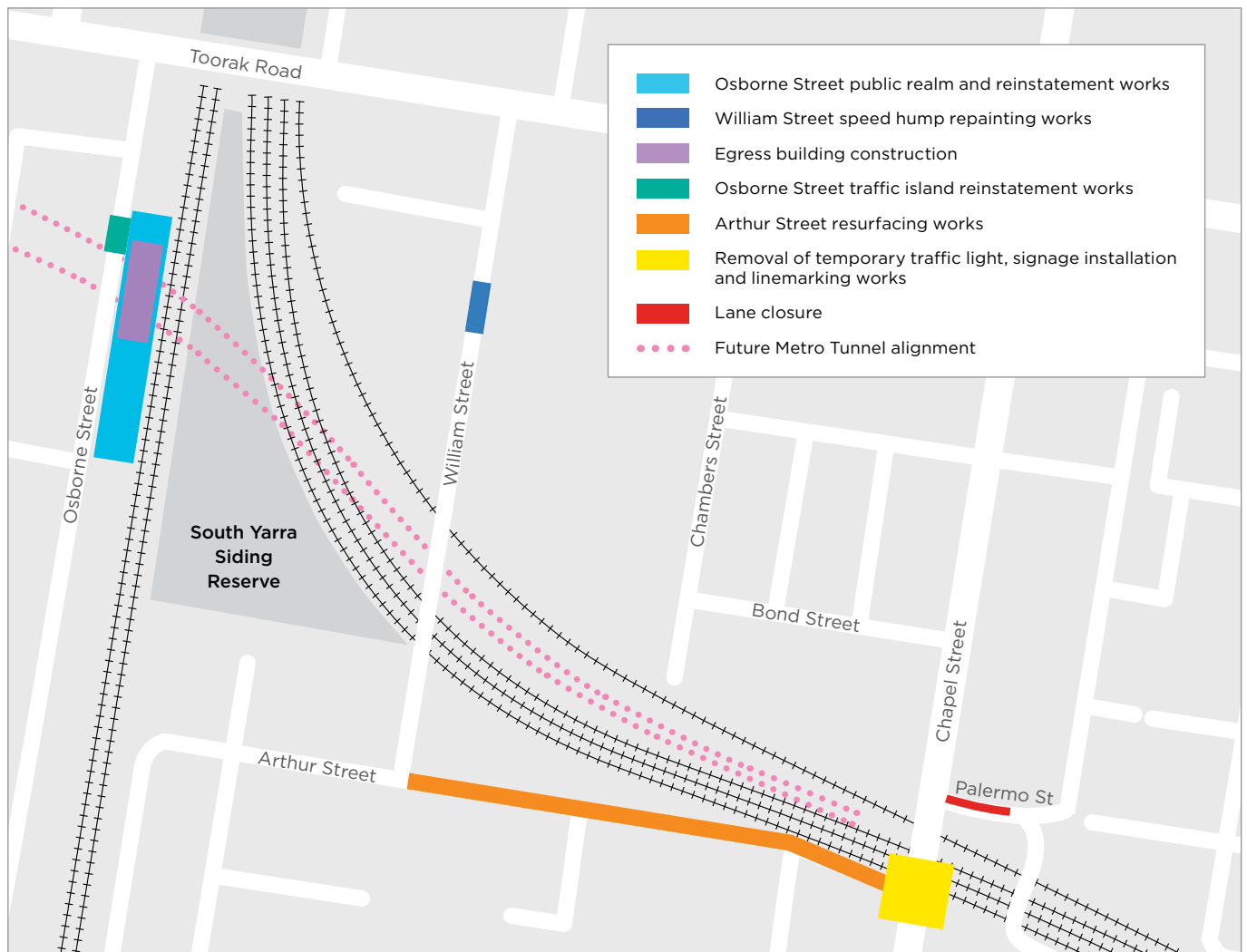
South Yarra Siding Reserve, William Street, and Arthur Street

Maintenance works and installation of public artwork

Ongoing to late-2023



- Maintenance and landscaping works within the parks will continue in October
- Installation of the remaining artwork is scheduled to be delivered and installed by mid-October
- Works will involve the use of non-destructive digging trucks, concrete trucks, handheld tools. NDD trucks use high-pressure water to excavate the ground without damaging or impacting the existing underground services
- Works are expected to generate medium levels of noise with some high-level peaks during excavation
- To know more about the Metro Tunnel's South Yarra precinct artwork, please visit **bigbuild.vic.gov.au/projects/metro-tunnel/community/art/legacyartwork**.



Construction works at the South Yarra eastern tunnel entrance - Indicative only.

High Capacity Signalling technology testing

- Out of hours testing will continue intermittently on the Cranbourne and Pakenham lines throughout 2023 to enable High Capacity Signalling testing.
- Testing of the High Capacity Signalling technology is expected to generate low levels of noise.

To know more about the High Capacity Signalling technology, please visit bigbuild.vic.gov.au/projects/metro-tunnel/about/technology/high-capacity-signalling.

What is Non-destructive digging (NDD?)

Non-destructive digging, or NDD, uses high-pressure water to excavate the ground.

This method enables digging without damaging or impacting the existing ground services, allowing for careful investigation of existing services.

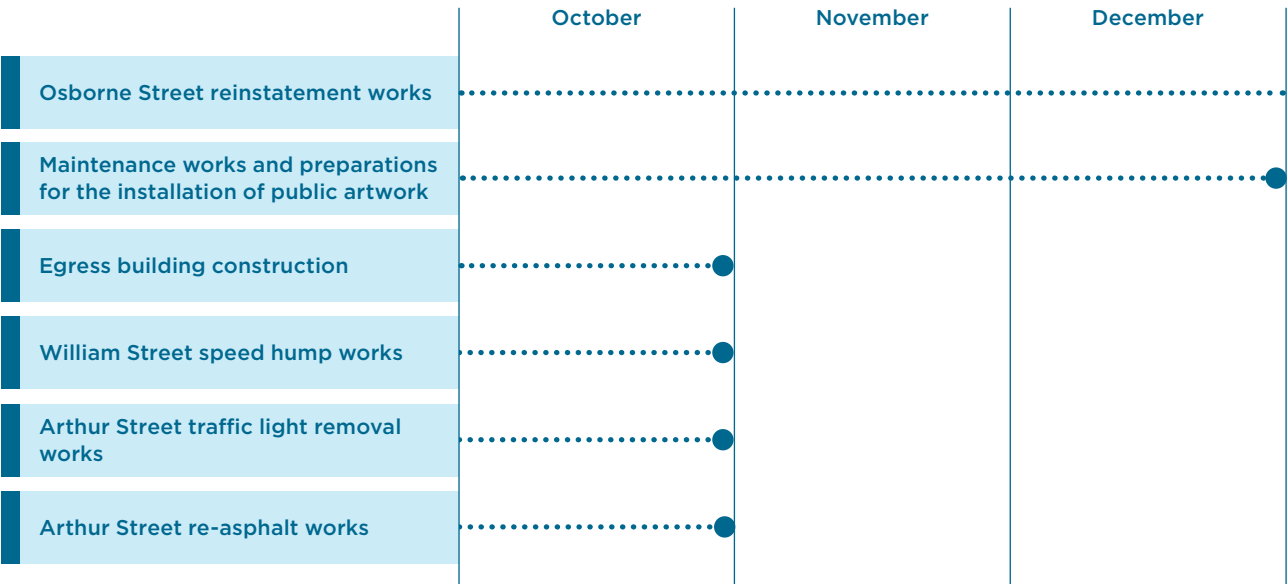
Traffic disruptions

October 2023

- A temporary closure of Osborne Street is required to reinstate the roadway and the traffic island opposite 139 Osborne Street, and removal of the remaining site shed. Local access to driveways will be maintained at all times
- A section of Arthur Street will be closed between Monday 16 and Saturday 21 October while resurfacing works are in progress. Traffic management will be in place along Portland Place, Arthur and William streets to help facilitate local access to businesses and residential properties
- There will be traffic impacts at the intersection of Arthur and Chapel streets for two nights between 7pm to 6am in October.
- Lane closures along sections of Chapel and Palermo streets will be required to reinstate linemarking and signages through October.

More information about these disruptions will be provided closer to the date of works. For the latest disruptions information visit bigbuild.vic.gov.au/disruptions.

Look ahead for 2023

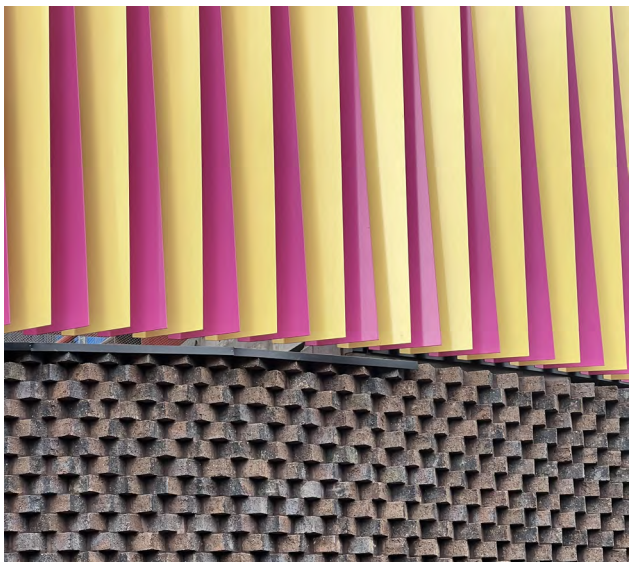


What's behind the Party Pink and Swedish yellow fins?

South Yarra's newest and brightest landmark doesn't just look good but also serves a number of core functions in the safe operation of the future Metro Tunnel. The building and the tunnel entrance houses a variety of mechanical and electrical systems, ventilation and smoke controls, staff rooms, equipment rooms and emergency equipment, which allow the trains to run safely in the tunnel. The tunnel entrance and building also provide an emergency access and exit from the tunnels.

The structures, equipment and plant are strategically placed adjacent to the tunnel entrance in the above-ground building in Osborne Street Reserve. The mechanical plant is surrounded by a ventilated fin screen in party pink and Swedish yellow, to make it more visually appealing. Meanwhile, the visual impact of the building and its features has been reduced by moving as much infrastructure underground as possible.

An emergency bay will be located on the southwest side of the building on Osborne Street. The building's emergency exit is designed to meet universal access requirements. The internal design layout of the building will include emergency evacuation directions to ensure people can exit the building safely and efficiently.



Egress building facade - Party Pink and Swedish Yellow fins with sawtooth brickwork cladding.

More information

metrotunnel.vic.gov.au
 1800 105 105
 (24 hours a day, 7 days a week)
 Rail Projects Victoria
 PO Box 2392, Melbourne, VIC 3001

Interpreter Service (03) 9209 0147

It should be noted that this information is current at the time of printing, however due to unforeseen circumstances, changes may occur. Please visit railprojects.vic.gov.au for the latest updates.