



MICKLEHAM ROAD UPGRADE – STAGE 1

MAY 2024



We're building extra lanes, upgrading key intersections and installing new traffic lights on Mickleham Road to reduce congestion and improve safety and travel times.

What's been happening

Since our last update, we've:

- upgraded the intersection at Greenvale Gardens Boulevard and Mickleham Road
- moved traffic onto the new northbound lanes on Mickleham Road between Somerton Road and Dellamore Boulevard
- started works to build the new southbound lanes on Mickleham Road

- installed new guard rail on Mickleham Road between Lemonwood Drive and Somerton Road
- installed new guard rail and built the new shared walking and cycling path on Somerton Road between Mickleham and French roads
- started earthworks, laying new asphalt and line marking as part of works to build the new traffic light intersection at Mickleham and Somerton roads.

What we're doing and when

In May, we'll:

- complete pavement, drainage and asphalt works on Somerton Road between Mickleham and French roads

- continue building the new southbound lanes between Somerton Road and Dellamore Boulevard
- continue building the new traffic light intersection at Mickleham and Somerton roads, including drainage and pavement works.

Most of these works will take place from **7am to 6pm, Monday to Friday and 7am to 1pm, Saturdays**. At times we'll need to work outside of these hours to minimise impacts on traffic during the day. We'll let you know ahead of time if you'll be affected.



Sign up for updates
Subscribe for email and SMS updates
at bigbuild.vic.gov.au/roads-subscribe



WHAT TO EXPECT

Traffic changes and night works

Temporary roundabout at Mickleham and Somerton roads

In early June we'll shift the temporary roundabout slightly north so we can continue building the new traffic light intersection at Mickleham and Somerton roads. We'll have signage and safety measures in place to help guide drivers through the area while works are underway.

Lane changes

From early June, we'll move traffic onto the new eastbound lanes of Somerton Road, between Blossom Drive and French Road, keeping one lane open in each direction. This is so we can continue works to build the new westbound lanes at the intersection. Please see the map below for more information.

We'll have signage on the road advising you of the exact date traffic will move to the new lanes.

Night works

To prepare for the upcoming lane changes, we'll need to work at night between **6pm and 5am, Sundays to Thursdays from Sunday 26 May to mid-June**. These works will involve digging up the old road surface, saw cutting, laying asphalt, re-aligning road barriers, line marking and water blasting.

There will be lane closures in place during this time, with signage and traffic management to guide you safely around our work area.

These works will generate medium to high levels of noise, dust and vibration at times. We'll have measures in place to ensure these impacts are minimised. We'll let you know ahead of time if you'll be directly affected.

Changed traffic conditions

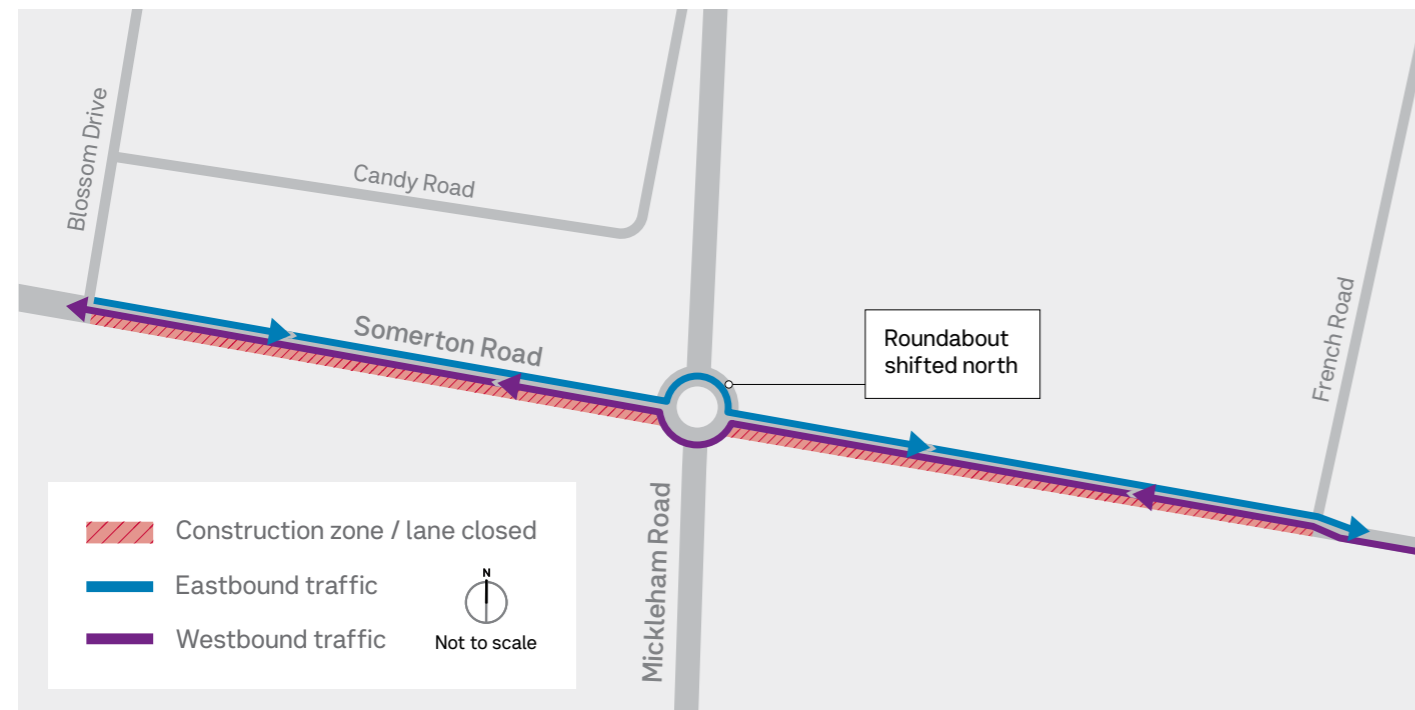
There are changed traffic conditions, including reduced speed limits, lane closures and temporary traffic barriers, traffic lights and line marking on Mickleham and Somerton roads while works take place. Temporary footpath closures and detours are also in place while we relocate services and build your new lanes.

Reduced speed limits through construction zones saves lives

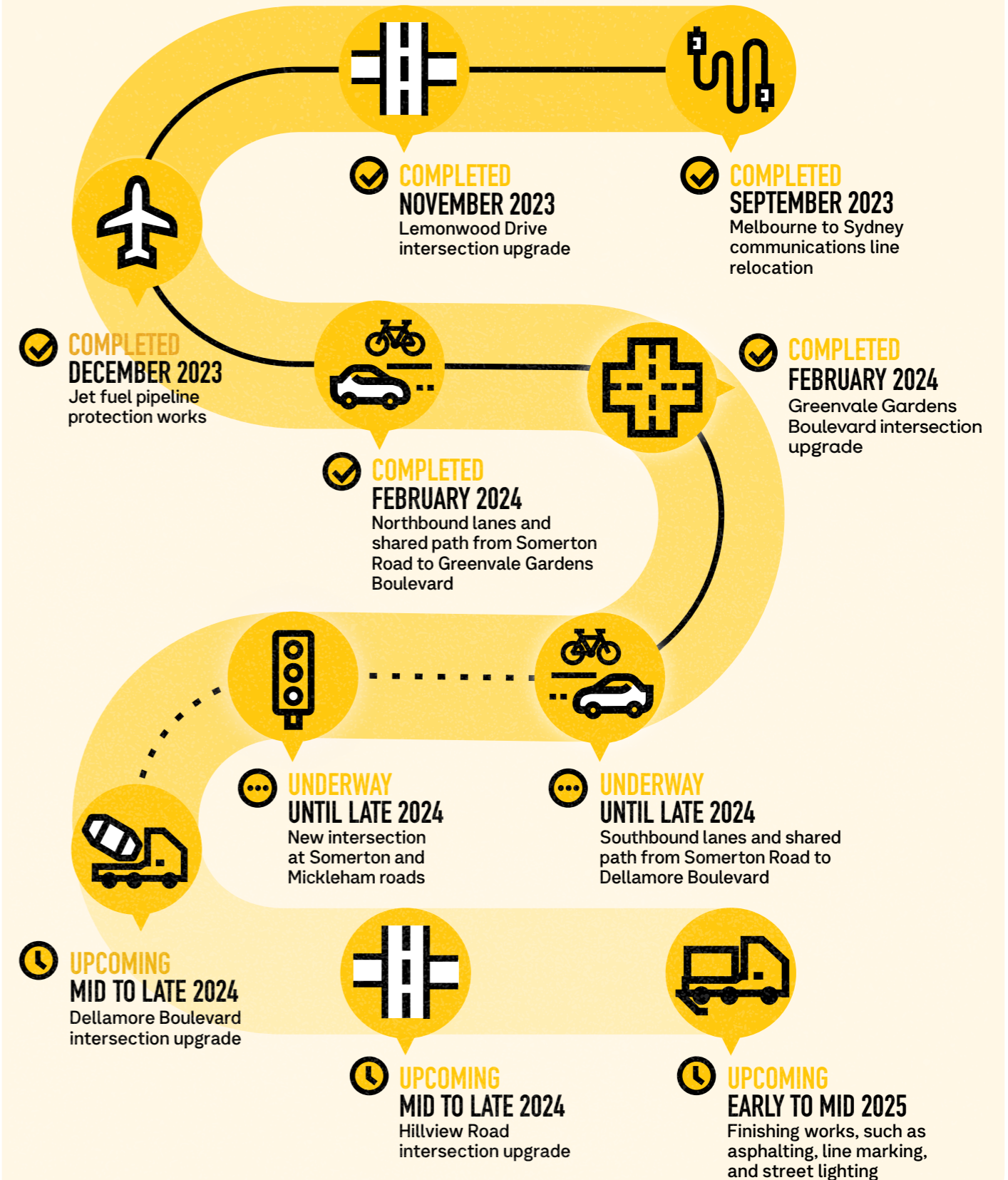
The speed limit has been reduced to 40km/h between Somerton Road and Dellamore Boulevard until the project is completed in 2025. We've reduced the speed limit because even when we're not working, there are still risks when driving near a construction site.

Research shows that the fatality rate reduces considerably when speeds are reduced. These changes on Mickleham Road are all about getting you and our workers home safe.

For more information about current and upcoming traffic disruptions, visit bigbuild.vic.gov.au/disruptions



Project Timeline



Meet our new sustainability partners

The project team recently enlisted the help of three hungry goats to control grass and weeds at our construction support site.

The Boer breed goats live on site in a fenced off area, and happily munch away on the grass in a sustainable and environmentally friendly solution to the nuisance weeds on site.

By eating the grass and weeds, the goats are an innovative and sustainable way to keep the area safer from fire and snake threats, and what's more, the goats make the use of herbicides unnecessary.

The initiative is in keeping with our key priorities of reducing emissions and delivering the best possible environmental outcomes.



Managing traffic impacts

We're aware of some recent traffic congestion on Mickleham Road during the AM and PM peaks. We're actively taking measures to improve traffic flow during these times.

So far, we've:

- increased green time at Aitken College during school pick up and drop off times
- realigned the temporary safety barriers and line marking at Aitken College to allow for more movements during the increased green time
- installed real-time travel signage on key roads around the network to help drivers make informed decisions about alternative routes (such as Oaklands Road)

- installed CCTV cameras at key intersections on Mickleham Road to allow for real-time monitoring and adjustment of traffic signals, as needed.

We're continually monitoring traffic flow and will make further adjustments as required.

Construction impacts

Our construction activities will generate medium to high levels of noise, dust, and vibration at times.

We're monitoring impacts to ensure they're kept to a minimum. We'll let you know ahead of time if you'll be directly impacted by our works.

Craigieburn Road Upgrade

For information about the nearby Craigieburn Road Upgrade, please visit bigbuild.vic.gov.au/craigieburn or subscribe for updates at bigbuild.vic.gov.au/roads-subscribe

We encourage you to plan your journeys and allow additional travel time. We thank you for your continued patience as we continue building your new lanes and new and upgraded intersections on Mickleham Road.

bigbuild.vic.gov.au/roads



For languages other than English please call 9209 0147

1800 105 105 (call anytime)

contact@bigbuild.vic.gov.au



Please contact us if you would like this information in an accessible format. If you need assistance due to a hearing or speech impairment, visit relayservice.gov.au