

NOTES:

1. BOUNDARY OF THE PROJECT IS DEFINED BY THIS VARIATION (BY ABUTTAL TO EXISTING CADASTRAL BOUNDARIES AND SUPPLEMENTED WITH LINES AND DIMENSIONS) TOGETHER WITH THE EXISTING SUBURBAN RAIL LOOP PROJECT EAST AREA VIDE LEGL./22-118
2. ALL MEASUREMENTS AND DIMENSIONS ARE SHOWN IN METRES
3. COPY OF LEGL./22-118 AND LEGL./23-319 ARE AVAILABLE IN THE CENTRAL PLAN OFFICE

PLAN TO VARY THE PROJECT AREA PURSUANT TO SECTION 96(3) MAJOR TRANSPORT PROJECTS FACILITATION ACT 2009

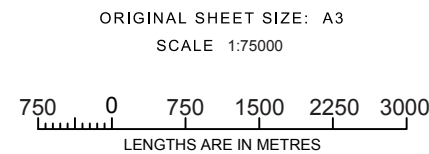
Plan Certified by Surveyor-General and lodged in the Central Plan Office Pursuant to Section 42 Surveying Act 2004  
Dated this 19th day of February 2024

*C. L. Sandy*

Craig Leslie Sandy  
Surveyor-General

LEGEND

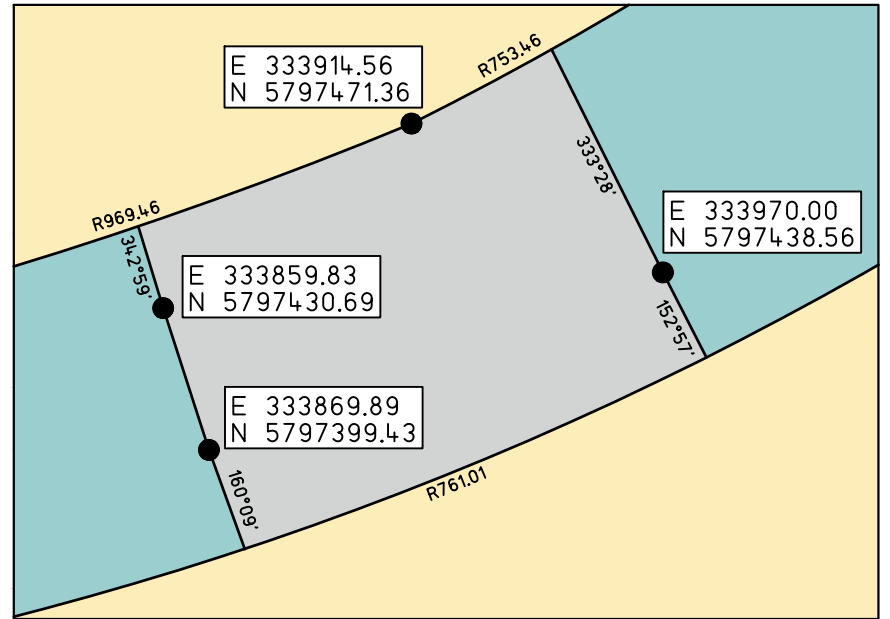
- 1 SHEET / SHEET NUMBER
- BOUNDARY OF SUBURBAN RAIL LOOP PROJECT EAST AREA (INCLUDING LEGL./22-118 BOUNDARIES AND THIS VARIATION)



SUBURBAN RAIL LOOP PROJECT EAST  
PROJECT AREA - VARIATION 1  
INDEX SHEET, SHEET 1 OF 2  
REV: B  
LEGL./ 23-319



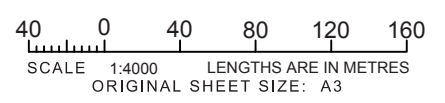
DIAGRAM 1  
NOT TO SCALE



LEGEND	
	AREA TO BE ADDED TO SUBURBAN RAIL LOOP PROJECT EAST AREA (UNLIMITED STRATUM)
	AREA TO BE ADDED TO SUBURBAN RAIL LOOP PROJECT EAST AREA (LIMITED STRATUM - LOWER LIMIT TO 4m BELOW SURFACE LEVEL)
	REMAINING CURRENT SUBURBAN RAIL LOOP PROJECT EAST AREA
	BOUNDARY OF SUBURBAN RAIL LOOP PROJECT EAST AREA (INCLUDING LEGL./22-118 BOUNDARIES AND THIS VARIATION)
	COORDINATED POINTS
	VICMAP PARCEL LINE



PROJECT AREA - VARIATION 1



SUBURBAN RAIL LOOP PROJECT EAST

Title: LEGL./ 23-319	
SHEET 2	REV: B