

Pedestrian and cycling bridge over rail line at Champion Road. Artist impression only, subject to change.

Maddox Road and Champion Road, November 2024

# Newport level crossing removals design release



We're removing the level crossings at Maddox Road and Champion Road in Newport. Project designs have now been released.

Maddox Road level crossing will be removed by building passenger and freight rail bridges over the road. The rail bridges will start to rise near Blenheim Road and return to ground near Challis Street.

We'll close Champion Road at the level crossing. A new link road, connecting Maddox Road to Champion Road via Akuna Drive, will open before the Champion Road level crossing is closed in 2026.

To keep the community connected we'll also build a pedestrian and cycling bridge over the rail line at Champion Road.

Your feedback has helped us better understand the needs of the community. This combined with safety regulations, our technical

assessments and engineering requirements have shaped the project designs.

Early works have started to deliver construction equipment, install temporary fencing and relocate utilities. Major construction will begin in 2025.

We'll let the community know well in advance of any upcoming disruptions or changes in the local area.

When the Metro Tunnel opens in 2025, the project will allow for more trains to run more often on the Werribee Line in future.

The Maddox Road and Champion Road Level Crossing Removal Project is part of an ongoing investment to upgrade the Werribee Line, making it level crossing free by 2030.

## Why these level crossings need to go



Up to 48 trains run in the morning peak, meaning that the boom gates are down for around 50 minutes



Over 10,000 vehicles travel through these crossings each day



Improved safety for drivers, bike riders and pedestrians



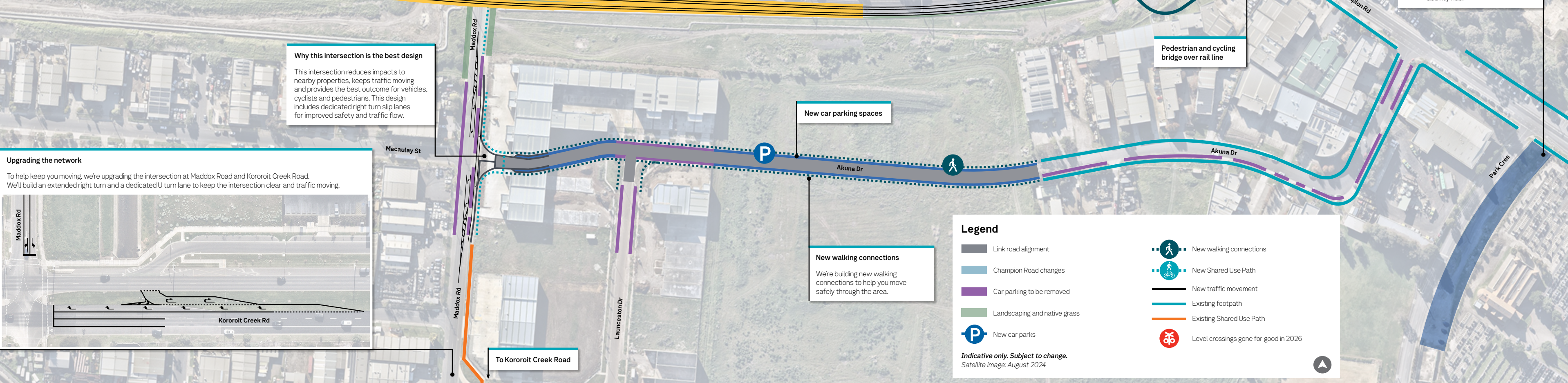
Sign up for updates  
[levelcrossings.vic.gov.au](https://levelcrossings.vic.gov.au)





# Newport level crossing removals precinct plan

Aerial view of Maddox Road, Champion Road and Akuna Drive extension. Concept only, subject to change.



## Maintaining traffic flow

To keep drivers moving we'll be extending Akuna Drive. The road network within the Newport and Williamstown North area will continue to perform well following the closure of Champion Road at the level crossing in 2026.

Our traffic modelling shows that most of the community will use Maddox Road and Melbourne Road via Kororoit Creek Road during peak periods.

The new link road will primarily be used by locals for neighbourhood and local business trips and will, on average, add only two minutes to local journeys.

Removing the boom gates will improve traffic flow and create more reliable journeys on Maddox Road and help to maintain the strong local road network performance in the Newport and Williamstown North area. This is further improved by the changes we will make at the intersection of Maddox Road and Kororoit Creek Road.



## Car parking

To make way for the new link road there will be changes to parking on Maddox and Champion roads, Akuna Drive and Launceston Street as well as to traffic movement on Champion Road. We have worked to provide an overall increase in car parking in the local area with new spaces added to Park Crescent.



## Better local connections

We're building new paths, including a pedestrian and cycling bridge over the rail line at Champion Road and a shared path along Railway Parade to Market Street. These new paths will provide safer options for active transport, offering an alternate way for the community to connect with local businesses and nearby parks.



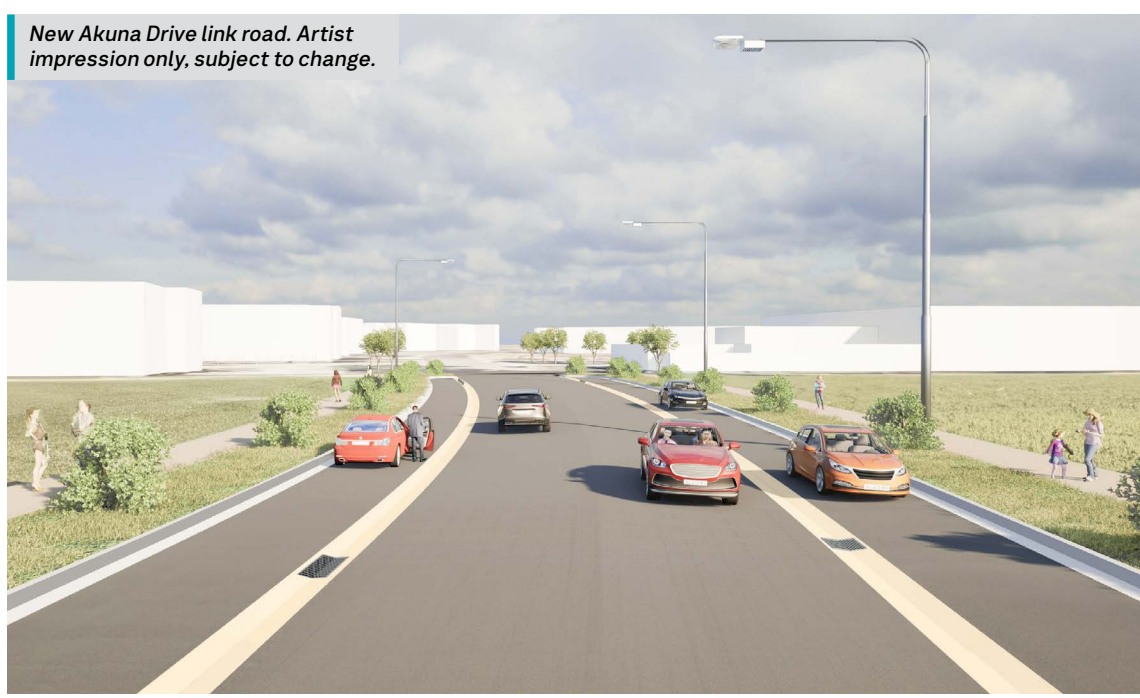
## Greening the area

We'll plant trees and work on landscaping in and around the project area once major works are completed in 2026. More information, including the types of trees and shrubs being planted in your neighbourhood, will be shared with the community as the project progresses.

## Connecting Champion Road to Maddox Road

To keep you moving, we're extending Akuna Drive to link Champion Road to Maddox Road. This new road will provide a safe connection for drivers travelling through Newport and Williamstown. The new road will open before Champion Road is closed in 2026.

As part of the project, there will be changes to local car parking on Akuna Drive, Champion Road, Launceston Street and Maddox Road. These changes are needed to create safe, free-flowing traffic and build new pedestrian and cycling connections.



## Newport to be level crossing free in 2026

As we have developed the designs, a key focus has been on creating safer journeys for drivers, cyclists and pedestrians, while also improving travel times now and for the future.



Scan the QR code or visit [levelcrossings.vic.gov.au/newport-fact-sheets](http://levelcrossings.vic.gov.au/newport-fact-sheets) to read the fact sheet on **Keeping you moving** in Newport





## Thanks for your feedback

Between April and June, the Newport and Williamstown North communities provided feedback about origin and destination travel patterns.

### We heard:



On weekdays the majority of people travel between 6am and 10am or between 2pm and 6pm



Locals value ease of movement around the area and access to transport



73 per cent of respondents value the Newport Lakes Reserve



Car is the preferred mode of transport for travel in and around Newport. Some respondents said that they regularly walk or cycle through the area.

You can read more about what we heard from the community in our consultation report summary at [levelcrossings.vic.gov.au/newport](https://levelcrossings.vic.gov.au/newport)



Each level crossing has its own set of characteristics to consider when preparing to remove it.

Scan the QR code or visit [levelcrossings.vic.gov.au/newport-fact-sheets](https://levelcrossings.vic.gov.au/newport-fact-sheets) to read the Understanding Newport level crossing removals brochure.

This brochure explains the designs that were ruled out and the criteria we used to assess designs.

### Chat with the project team

Join us at an in-person information session or webinar to find out more about the project and have your questions answered by the team.



#### Community sessions (in person)

Newport Rams Baseball Club  
K C White Reserve, 120 Park Crescent,  
Williamstown North

- Wednesday 27 November, 5:30pm to 8:30pm
- Saturday 30 November, 10am to 1pm

#### Virtual webinar

**Monday 2 December, 12pm to 1pm, via Zoom**

Zoom link will be provided to registered participants prior to event



Scan the QR code or visit [trybooking.com/CWBYE](https://trybooking.com/CWBYE) to register. Registration is required for all sessions.

Example of images featured on the resting points within Champion Road pedestrian and cycling bridge. Artist impression only, subject to change.



Have your say

Help shape your local area

To keep the community connected, we're building a new pedestrian and cycling bridge over the rail line at Champion Road.

This bridge will be wide enough to cater for large electric cargo bicycles, prams and mobility scooters.

Designed to blend into the existing landscape, the bridge will feature natural tones and materials. Shrubs and grasses will also be planted around the area.

We're seeking your feedback on themes for the images featured on the railing at the two resting points on the bridge.

Share your thoughts to help shape your local area by scanning the QR code or visiting [engage.vic.gov.au/lxrp-newport](https://engage.vic.gov.au/lxrp-newport)



## Project timeline



### Late 2022

- Project announced



### 2023

- Vision and values engagement
- Early site investigations and planning



### Early 2024

- Planning consultation and community surveys
- Stakeholder Liaison Group meetings begin
- Continue site investigations and planning



### Late 2024

- Design released
- Early works begin



### 2025

- Major works begin



### 2026

- New link road opens
- Champion Road level crossing closed
- Maddox Road level crossing removed
- Newport level crossing free

Timeline subject to change.



## Keeping in touch

To stay up to date, subscribe to email updates at [levelcrossings.vic.gov.au/subscribe](https://levelcrossings.vic.gov.au/subscribe) and select Newport level crossings.

[levelcrossings.vic.gov.au](https://levelcrossings.vic.gov.au)

[contact@levelcrossings.vic.gov.au](mailto:contact@levelcrossings.vic.gov.au)



For languages other than English, please call 9209 0147.

1800 105 105 (call anytime)

Please contact us if you would like this information in an accessible format. If you need assistance due to a hearing or speech impairment, visit [relayservice.gov.au](https://relayservice.gov.au)

