

View of the station entry, looking to the northwest. Mature trees and plants shown. Artist impression only, subject to change.



Issue #01, November 2024

# A new station in Tarneit's west

## First look at early designs

**The Victorian Government is building a new station in Tarneit's west to better connect the growing suburbs of the west to Melbourne's CBD.**

To be delivered by the Level Crossing Removal Project, the new station will be located near the corner of Leakes and Davis roads. It will provide a much-needed public transport link on the Geelong Line as part of the V/Line network.

When it opens in 2026, the new station will include a four-bay bus interchange, parking for up to 400 commuters, and an accessible pedestrian underpass.

The station will also feature a welcoming and landscaped precinct, equipped with seating, separated walking and cycling pathways, bike hoops and secure bike storage.

**Early designs for the station are now available to view. We're inviting the Tarneit community to get involved in the project by heading to our online engagement hub.**

### Visit our online engagement hub

Visit our online engagement hub, Engage Victoria, to:

- View the early designs
- Fill out a survey
- Share your feedback on the new station name
- Make a planning approval submission
- Ask the team a question
- Register for an information session



Scan the QR code or head to [engage.vic.gov.au/new-station-in-tarneit-west](https://engage.vic.gov.au/new-station-in-tarneit-west)

Delivered by the  
Level Crossing Removal Project



# Your new station precinct

The new station, to be located 2.7kms west of Tarneit Station, will improve public transport services for the growing population of Tarneit.

The precinct will feature a pedestrian underpass, bus bays and shelters, walking and cycling paths, bike storage and landscaping.

## Share your feedback on the station name

The new station in Tarneit's west needs a name! We are calling on the community to help us choose one.

View the shortlisted names for the station and share your feedback.

Be part of this local legacy-making opportunity by visiting [engage.vic.gov.au/new-station-in-tarneit-west](http://engage.vic.gov.au/new-station-in-tarneit-west)

\*The official name of the new station in Tarneit's west will be subject to the required Victorian Government approvals.

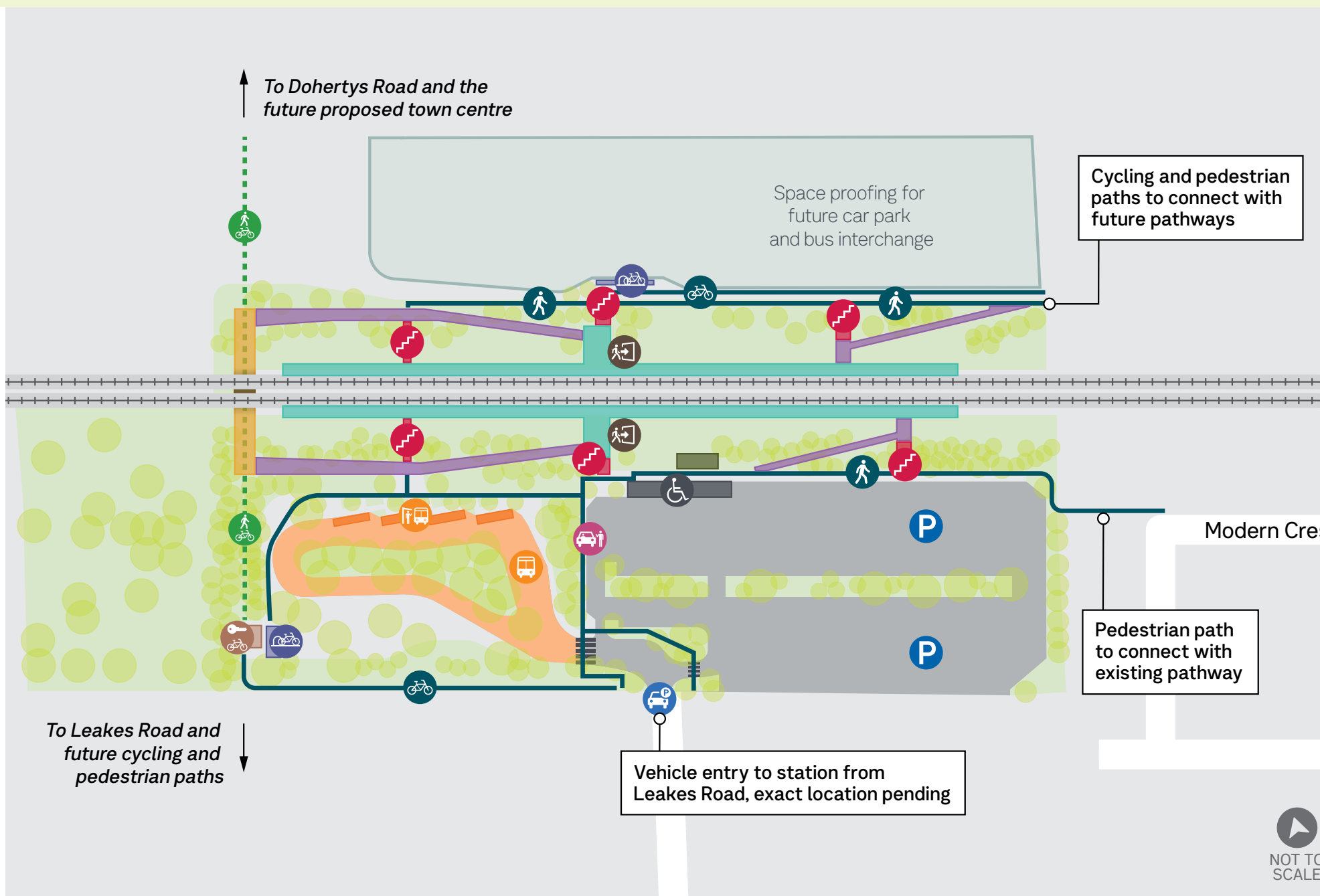


View of pedestrian underpass, looking to the northeast. Mature trees and plants shown. Artist impression only, subject to change.

### The new station in Tarneit's west

**Legend**

- Station platform
- Ramp to the platform
- Pedestrian underpass
- Platform access via stairs
- Bus bays and shelters
- Bus interchange
- Parkiteer (locked bike storage)
- Bike hoops
- Landscaping
- Protective Services Officer facility
- Cycling paths
- Pedestrian paths
- Main station entrance
- Station car park
- Accessible parking
- Vehicle entry
- Pick up drop off zone
- Zebra crossing
- Future pedestrian and cycling connections



## Project benefits

The design and features of the new station in Tarneit's west will provide a range of benefits:

- More access to public transport services for the growing population of Tarneit and Melbourne's outer west
- Separated walking and cycling pathways through the precinct, connecting to existing and future local pathways
- Centralised bus services for the local community, with a new bus interchange located at the station
- Well-lit, accessible pedestrian underpass underneath the rail line
- A better spread of station usage across the area, relieving commuter parking pressure at Tarneit Station
- Supports sustainable travel with cycling infrastructure
- The precinct design will align with nearby stations on the V/Line network
- Safe movements of all precinct users through the use of pedestrian zones in the car park
- Local residents will experience an accessible, modern and welcoming station precinct
- Reduced disruptions and impacts due to offsite construction
- Celebration of local flora and fauna through a landscaped entry space
- Space proofing for additional tracks, transport services and a vehicle access connection on the north of the station

# Planning approvals

## Planning approval for this project will proceed under Clause 52.03 – Level Crossing Removal Project of the Wyndham Planning Scheme.

The Level Crossing Removal Project is seeking community feedback on a range of planning matters, including:

- the proposed project boundary
- construction-related environmental, heritage and amenity impacts
- native vegetation
- management of potential impacts
- other project matters.

Feedback will inform the Minister for Planning's assessment of the project under Clause 52.03.

Scan the QR code below to complete a planning submission. You can also contact us by calling **1800 105 105** or emailing **contact@levelcrossings.vic.gov.au** to request a hard copy planning approval form. All submissions must be received by



**11.59pm  
Sunday 15  
December  
2024.**

## ਟਾਰਨੈਟ-ਨਾ ਪਸ਼ਚਿਮਮਾਂ ਤਮਾਰਾਂ ਨਵਾਂ ਟ੍ਰੇਨ ਸਟੇਸ਼ਨ

ਵੀਲਿਨ ਅਤੇ ਡੇਵਿਸ ਰਸਤਾਆਂ ਨੂੰ ਛੱਡ ਕੇ, ਟਾਰਨੈਟ-ਨਾ ਪਸ਼ਚਿਮਮਾਂ ਅਤੇ ਨਵਾਂ ਟ੍ਰੇਨ ਸਟੇਸ਼ਨ ਆਪਣੀ ਰਹਾਈ ਥਾਂ ਤੇ ਵਿਸ਼ੇਸ਼ ਅਮਾਰਾ ਸਰਵੇਖਣਾਂ ਲਾਗੂ ਕਰਨ ਵਾਲੇ ਆਮ ਸਥਾਨਿਕ ਸਮੁਦਾਇ ਨੂੰ ਆਮੰਤ੍ਰਿਤ ਕਰੀ ਰਹਾਈ ਥਾਂ।



2025 ਵਿੱਚ ਆਰੰਭ ਹੋਣ ਵਾਲੇ ਨਵੇਂ ਵੀ/ਲਾਈਨ ਸਟੇਸ਼ਨ ਨੂੰ ਆਰੰਭ ਕਰਨ ਵਾਲੇ ਸਮੇਂ, 400 ਯਾਤਰੀਆਂ ਲਈ ਪਾਰਕਿੰਗ ਅਤੇ ਸੁਰੱਖਿਆ ਥਾਂ ਪ੍ਰਦਾਨ ਕਰਨ ਵਾਲੇ ਸਮੁਦਾਇ ਨੂੰ ਆਮੰਤ੍ਰਿਤ ਕਰੀ ਰਹਾਈ ਥਾਂ।

ਅਮਾਰਾ ਆਨਲਾਈਨ ਐਂਗੇਜਮੈਂਟ ਫਾਰਮ 'ਤੇ ਸਰਵੇਖਣਾਂ ਕਰੋ, ਪ੍ਰਸ਼ਨ ਪੁੱਛੋ ਅਤੇ ਆਪਣੀ ਸਮੁਦਾਇ ਨੂੰ ਆਮੰਤ੍ਰਿਤ ਕਰੋ।

ਫਾਰਮ ਨੂੰ ਭਰਨ ਵਾਲੇ ਆਮੰਤ੍ਰਿਤ ਕਰੀ ਰਹਾਈ ਥਾਂ [engage.vic.gov.au/new-station-in-tarneit-west](https://engage.vic.gov.au/new-station-in-tarneit-west) 'ਤੇ ਜਾਓ।

## Tarneit's West में आपका नया ट्रेन स्टेशन

हम स्थानीय समुदाय को उस नए स्टेशन के बारे में अपना सर्वेक्षण भरने के लिए आमंत्रित कर रहे हैं जो हम Tarneit's West में Leakes और Davis सड़कों के कोने के पास बना रहे हैं।

जब यह 2026 में खुलेगा, तो नए वी/लाइन (V/Line) स्टेशन में चार-बे बस इंटरचेंज, 400 तक यात्रियों के लिए पार्किंग और एक सुलभ पैदल यात्री अंडरपास शामिल होगा।

सर्वेक्षणों को भरें, प्रश्न पूछें या हमारे ऑनलाइन इंगेजमेंट फॉर्म में आगामी सामुदायिक सूचना सत्रों के बारे में जानें।



क्यूआर कोड को स्कैन करें या हम पर जाने के लिए [engage.vic.gov.au/new-station-in-tarneit-west](https://engage.vic.gov.au/new-station-in-tarneit-west) पर जाएं।

## ਟਾਰਨੈਟ ਦੇ ਪੱਛਮ ਵਿੱਚ ਤੁਹਾਡਾ ਨਵਾਂ ਰੇਲਵੇ ਸਟੇਸ਼ਨ

ਅਸੀਂ ਟਾਰਨੈਟ ਦੇ ਪੱਛਮ ਵਿੱਚ, ਲੀਕਸ ਅਤੇ ਡੇਵਿਸ ਰੋਡ ਦੇ ਚੌਰਾਹੇ ਦੇ ਨੇੜੇ, ਬਣ ਰਹੇ ਨਵੇਂ ਸਟੇਸ਼ਨ ਬਾਰੇ ਸਾਡੇ ਸਰਵੇ ਠੀਕ ਠੀਕ ਲਈ ਸਥਾਨਕ ਭਾਈਚਾਰੇ ਨੂੰ ਆਮੰਤ੍ਰਿਤ ਕਰੀ ਰਹਾਈ ਥਾਂ।

ਜਦੋਂ ਇਹ 2026 ਵਿੱਚ ਖੁੱਲ੍ਹੇਗਾ, ਤਾਂ ਇਸ ਨਵੇਂ ਵੀ/ਲਾਈਨ ਸਟੇਸ਼ਨ ਵਿੱਚ ਚਾਰ-ਕਤਾਰ ਵਾਲਾ ਬੱਸ ਇੰਟਰਚੇਂਜ, 400 ਤੱਕ ਯਾਤਰੀਆਂ ਲਈ ਪਾਰਕਿੰਗ, ਅਤੇ ਆਪਣੇ ਆਪ ਲਈ ਪਹੁੰਚਯੋਗ ਪੈਦਲ ਅੰਡਰਪਾਸ ਸ਼ਾਮਲ ਹੋਵੇਗਾ।

ਸਾਡੇ ਆਨਲਾਈਨ ਐਂਗੇਜਮੈਂਟ ਫਾਰਮ 'ਤੇ ਜਾ ਕੇ ਸਰਵੇਖਣ ਭਰੋ, ਪ੍ਰਸ਼ਨ ਪੁੱਛੋ ਜਾਂ ਆਉਣ ਵਾਲੇ ਕਮਿਊਨਿਟੀ ਜਾਣਕਾਰੀ ਸੈਸ਼ਨਾਂ ਬਾਰੇ ਜਾਣਕਾਰੀ ਪ੍ਰਾਪਤ ਕਰੋ।



ਇਸ QR ਕੋਡ ਨੂੰ ਸਕੈਨ ਕਰੋ ਜਾਂ ਹੱਥ 'ਤੇ ਜਾਣ ਲਈ [engage.vic.gov.au/new-station-in-tarneit-west](https://engage.vic.gov.au/new-station-in-tarneit-west) 'ਤੇ ਜਾਓ।

## 塔内特西区 (Tarneit's West) 的新火车站

我们邀请当地社区填写有关我们在塔内特西区（靠近 Leakes 路和 Davis 路拐角处）新建车站的调查问卷。

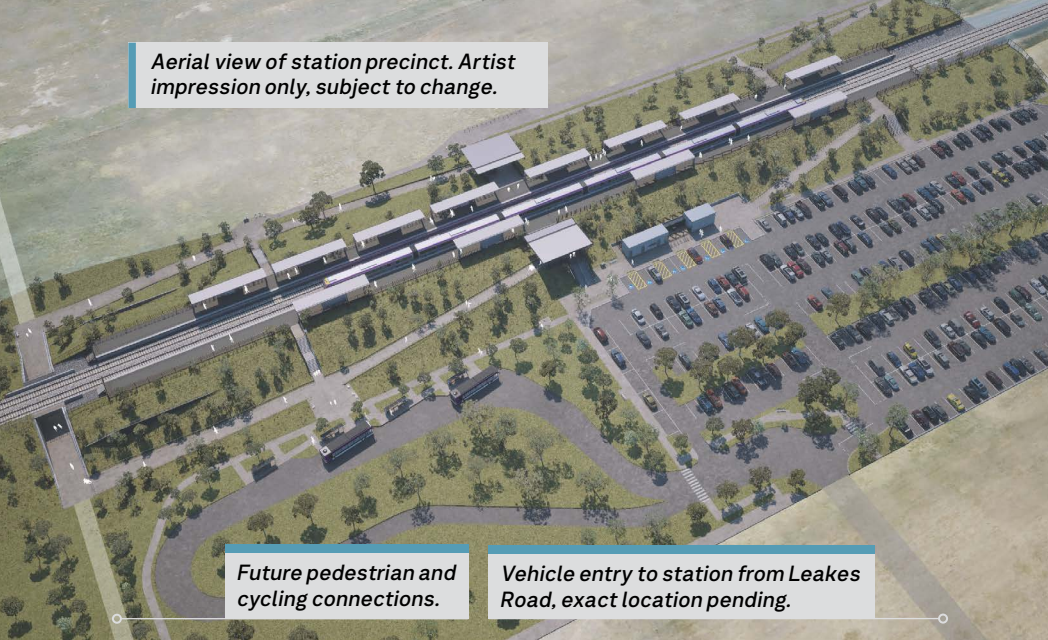
新的 V/Line 车站将于 2026 年开放，届时将设有四个车位的公交换乘站，最多可供 400 名通勤者停车的停车场，以及一条无障碍行人地下通道。

请访问我们的在线参与中心，填写调查问卷，提出问题，或了解即将举行的社区信息咨询会。



请扫描二维码或前往 [engage.vic.gov.au/new-station-in-tarneit-west](https://engage.vic.gov.au/new-station-in-tarneit-west) 访问在线参与中心。

Aerial view of station precinct. Artist impression only, subject to change.



Future pedestrian and cycling connections.

Vehicle entry to station from Leakes Road, exact location pending.

## Learn about the project and fill out our survey

View the early designs, fill out our survey, and ask us questions at our online engagement hub.

All questions and surveys must be received by **11.59pm Sunday 15 December 2024**.

If you would prefer to fill out a hard copy feedback survey, please contact us on **1800 105 105** and we will mail a form to you.



### Attend a community information session

We'll be hosting in-person and online information sessions in the coming weeks. Registrations are essential.

You can find out about the session dates and times and register at our online engagement hub at [engage.vic.gov.au/new-station-in-tarneit-west](https://engage.vic.gov.au/new-station-in-tarneit-west)

## Next steps

We still need to complete further technical assessments and site investigations. We will update the community as we carry out these works.

After further technical design and development, and site investigations, the final designs will be available to view in **early 2025**. Construction will begin in **2025** with the new station opening in **2026**.

## Project timeline



**2023**

Early development and planning work  
Site investigations



**Late 2024**

Early designs released  
Community engagement



**Early-mid 2025**

Final designs released  
Further community engagement



**2025**

Major construction



**2026**

Station opens  
Major construction complete

*Timeline subject to change.*



## Stay up to date

Be the first to know about the new station updates by signing up for regular email updates.

Sign up for SMS updates by texting **TARNEIT WEST** to **0427 840 967**.

If you'd like to talk to us about the project, call **1800 105 105** or send an email to [contact@levelcrossings.vic.gov.au](mailto:contact@levelcrossings.vic.gov.au).

For more information, visit the project homepage at [bigbuild.vic.gov.au/projects/tarneit-west](https://bigbuild.vic.gov.au/projects/tarneit-west)

Delivered by the Level Crossing Removal Project

[levelcrossings.vic.gov.au](https://levelcrossings.vic.gov.au)

1800 105 105 (call anytime)

[contact@levelcrossings.vic.gov.au](mailto:contact@levelcrossings.vic.gov.au)



For languages other than English, please call 9209 0147.

Please contact us if you would like this information in an accessible format. If you need assistance due to a hearing or speech impairment, visit [relayservice.gov.au](https://relayservice.gov.au)

