

# Construction update



Nathan Road roundabout works connecting to the temporary Hallam Valley Road detour route.

## What to expect

- Night works
- Temporary closure of roads and lanes
- Delays, detours and reduced speed limits
- Increased traffic volumes on Hallam Valley Road and Nathan Road
- Lighting for safe working conditions at night
- Increased construction activity, noise and vibration

## Changes to how you travel

Traffic management will be in place for the safety of the community and our workforce. Please follow the signs and instructions when travelling around the project area.

## Progress Street closure

**In May, we are closing Progress Street and connecting the road into the new Fowler Road bridge.**

At the completion of these works in June 2025, the level crossing will be permanently closed and the Fowler Road bridge will be open.

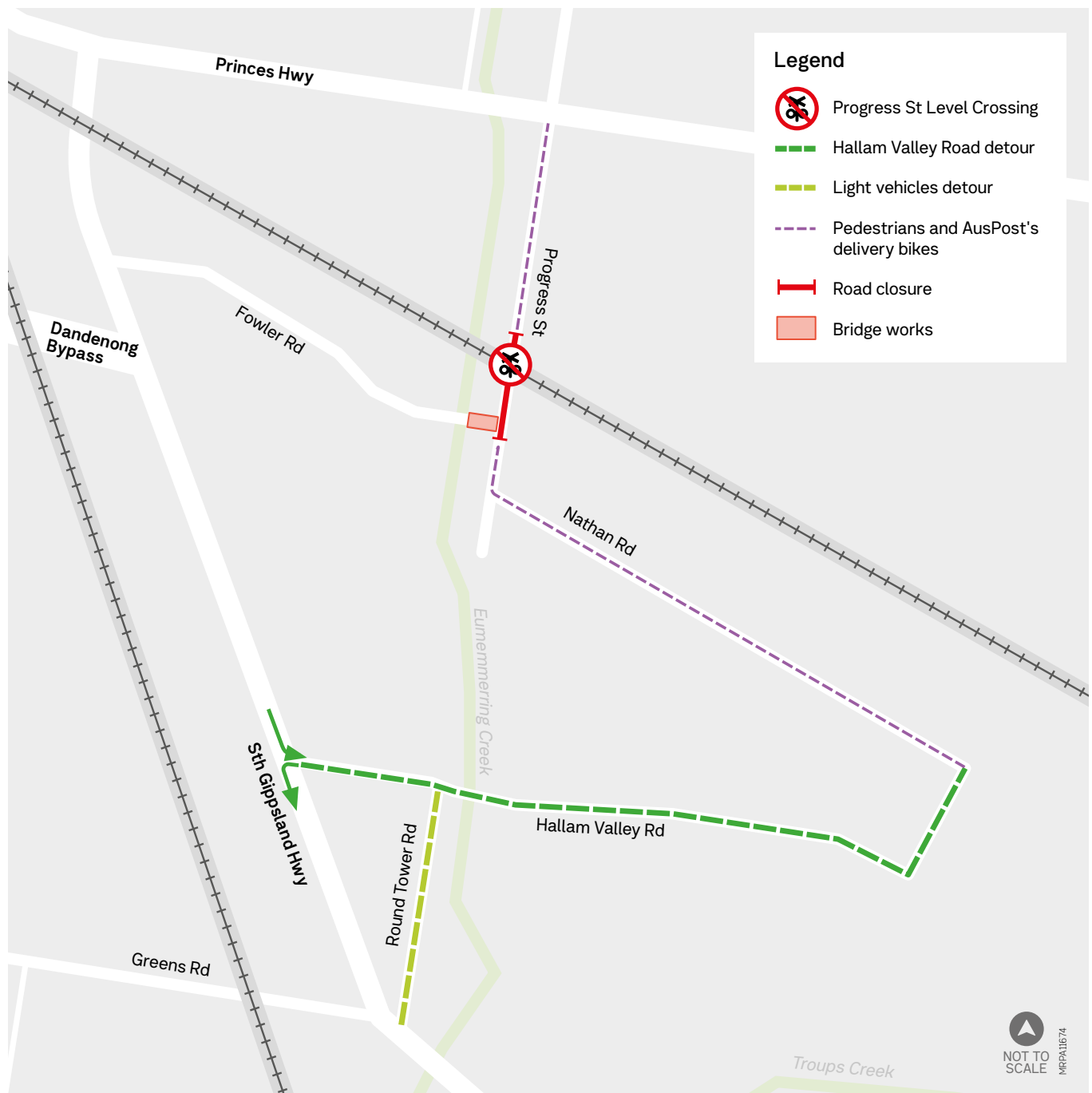
Date	Works	Detour
<b>Tuesday 6 May – Friday 13 June</b>	<b>Progress Street will be closed.</b> <b>Works will include:</b> <ul style="list-style-type: none"><li>– service locating</li><li>– demolishing existing asphalt and kerb</li><li>– earthworks and road construction</li><li>– drainage installation</li><li>– footpath construction</li><li>– water main upgrades</li><li>– asphaltting</li><li>– public lighting and linemarking</li><li>– landscaping</li></ul>	<b>Pedestrians and AusPost delivery bikes</b> – access will be provided through the level crossing via a temporary path on the east side of Progress Street <b>Light vehicles</b> – detour via Hallam Valley Road from Nathan Road <b>Heavy vehicles</b> – detour via Hallam Valley Road from Nathan Road. Left turn only exiting onto South Gippsland Highway

Every effort will be made to complete these works to schedule, however dates and times are subject to change.



**Sign up for updates**  
[levelcrossings.vic.gov.au](https://levelcrossings.vic.gov.au)

## Business precinct detour during Progress Street closure



### Stay informed



Email updates

[levelcrossings.vic.gov.au/subscribe](https://levelcrossings.vic.gov.au/subscribe)



Latest project news

[facebook.com/levelcrossings](https://facebook.com/levelcrossings)



SMS alerts

Text **PROGRESS** to **0447 558 118**

[levelcrossings.vic.gov.au](https://levelcrossings.vic.gov.au)

[contact@levelcrossings.vic.gov.au](mailto:contact@levelcrossings.vic.gov.au)



For languages other than English, please call 9209 0147.

1800 105 105 (call anytime)

Please contact us if you would like this information in an accessible format. If you need assistance due to a hearing or speech impairment, visit [relayservice.gov.au](https://relayservice.gov.au)

