



## CBD COMMUNITY REFERENCE GROUP MEETING 13

---

MEETING 13

Friday 31 August 2018



## METRO TUNNEL EARLY WORKS CBD

CBD - COMMUNITY REFERENCE GROUP  
AUGUST 31 2018

---

**Bec Rowe**, Community Stakeholder Lead – Early Works,  
**Kathlin Mayer**, Community Stakeholder Lead – Early Works

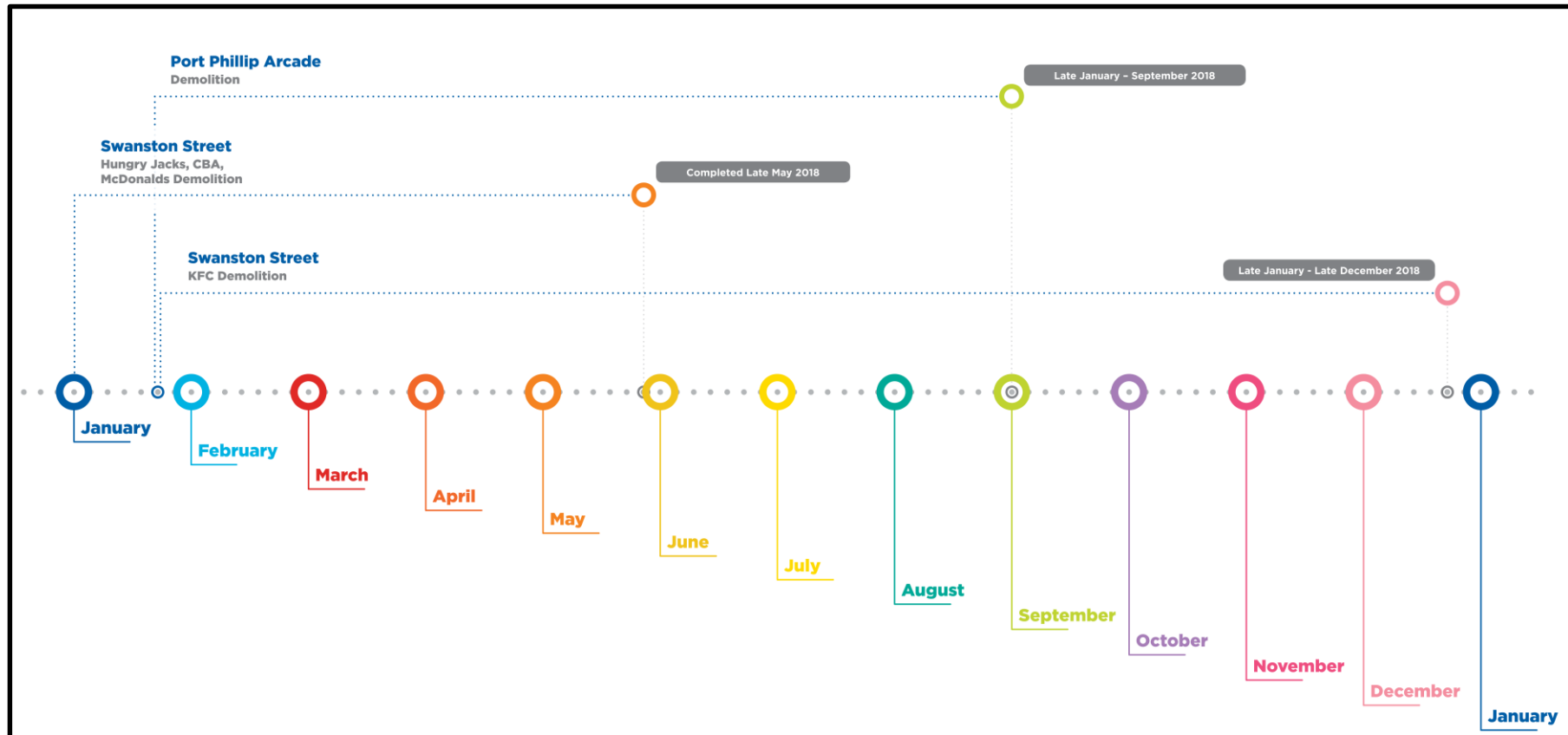


# JOHN HOLLAND EARLY WORKS PROGRAM UPDATE



# METRO TUNNEL EARLY WORKS TOWN HALL STATION UPDATE

# TOWN HALL STATION TIMELINE – EARLY WORKS



# KFC & PORT PHILLIP ARCADE DEMOLITION & NICHOLAS BUILDING WORKS

## Port Phillip Arcade demolition

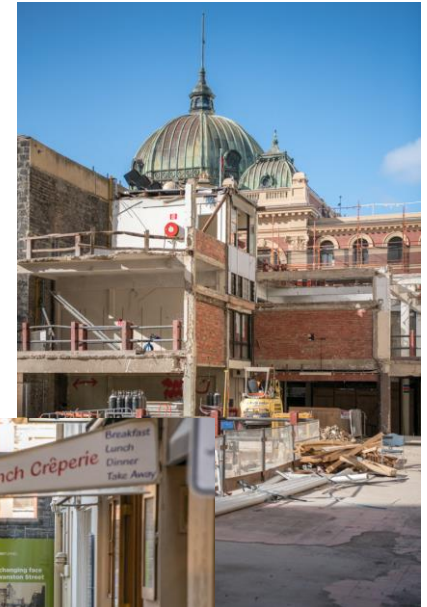
- Demolition works complete today
- Works to remove scaffolding and complete remediation will be carried out in early September

## KFC demolition

- Ongoing preparatory works towards building demolition
- Building demolition works to commence mid-September

## Nicholas Building works

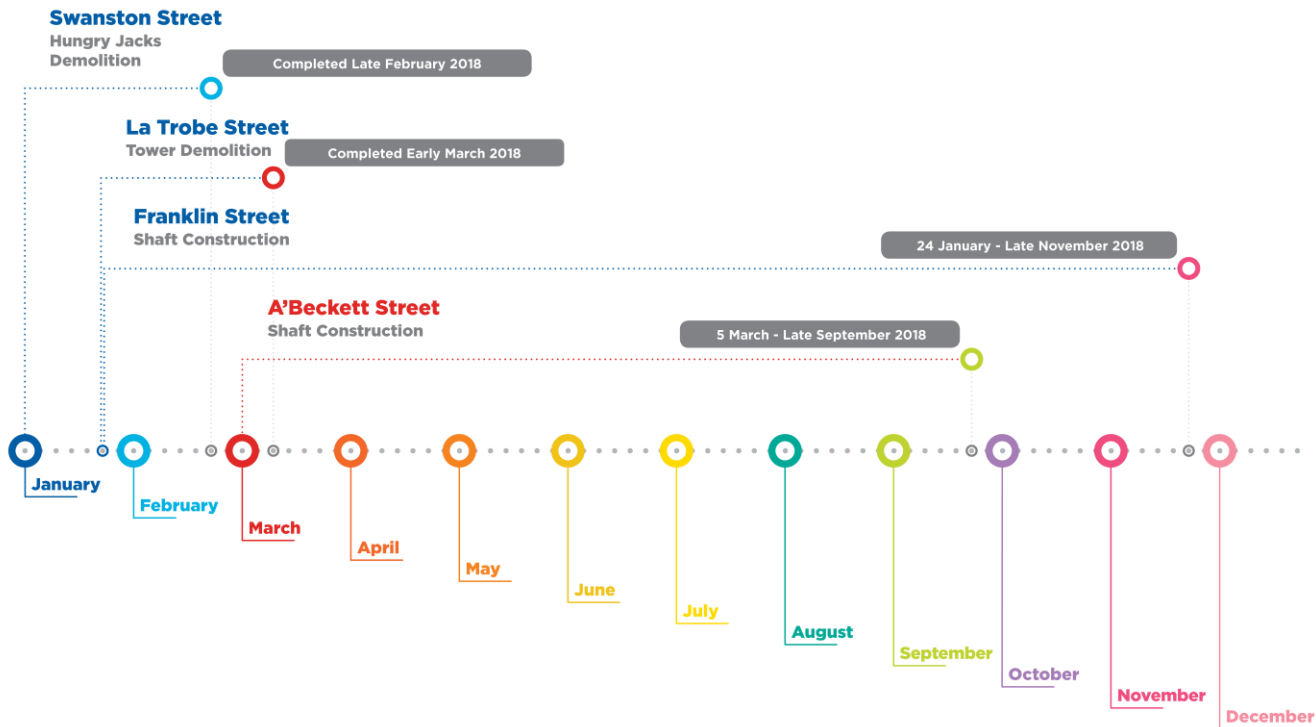
- Internal works completed





# METRO TUNNEL EARLY WORKS STATE LIBRARY STATION UPDATE

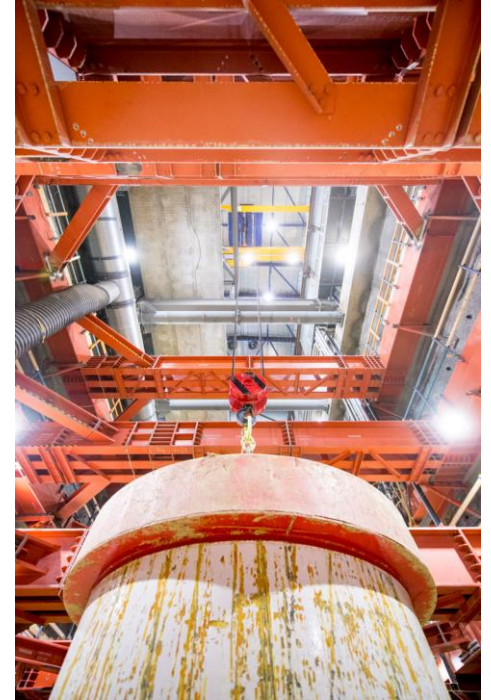
# STATE LIBRARY STATION TIMELINE – EARLY WORKS

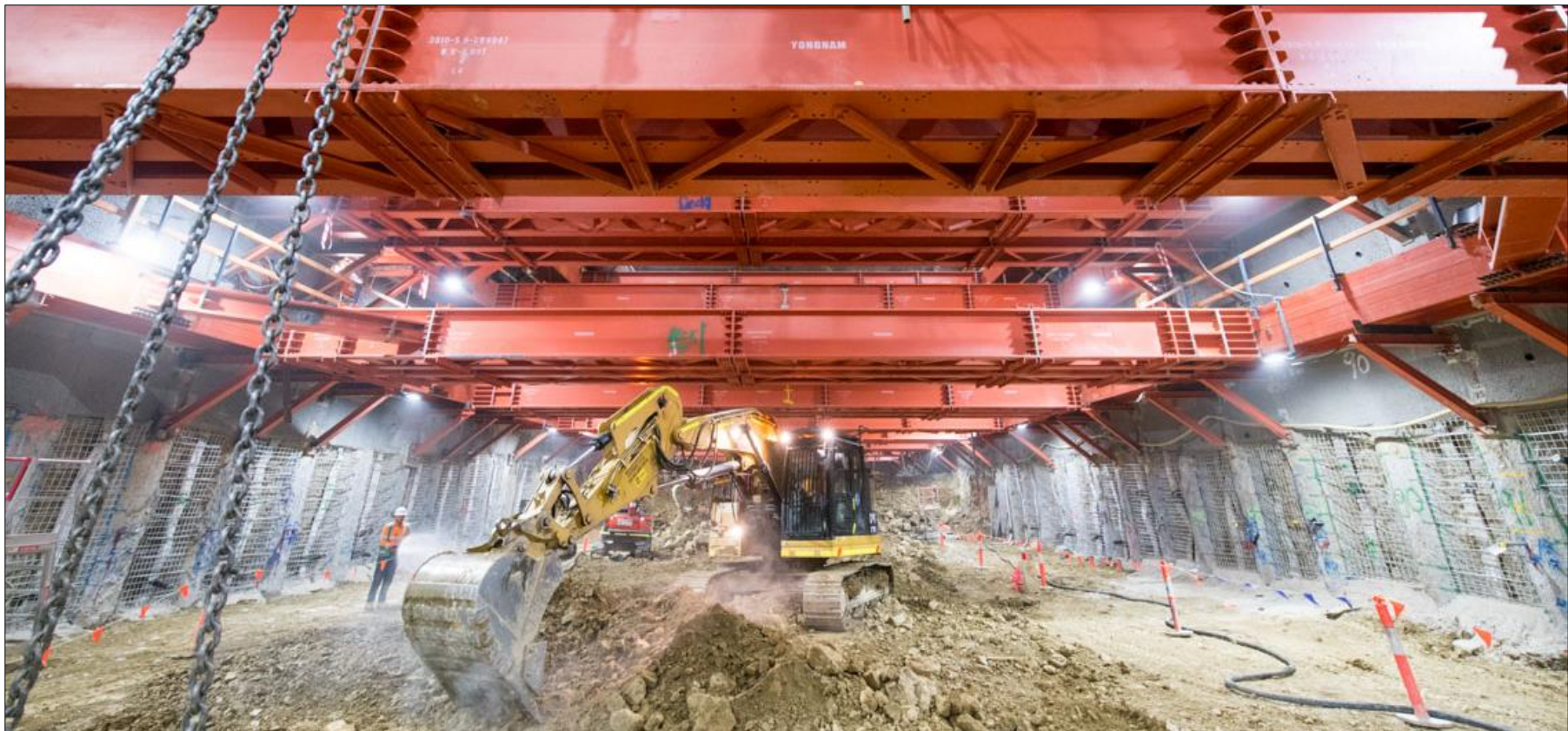




# FRANKLIN STREET & A'BECKETT STREET SHAFT UPDATE

- 24 hour works are now underway at both shaft sites within the acoustic sheds
- 24 hour deliveries consisting of props, beams and construction materials
- Ensuring deliveries are made during the daytime to reduce impacts to surrounding residents and businesses
- Doors to be closed for all night works.



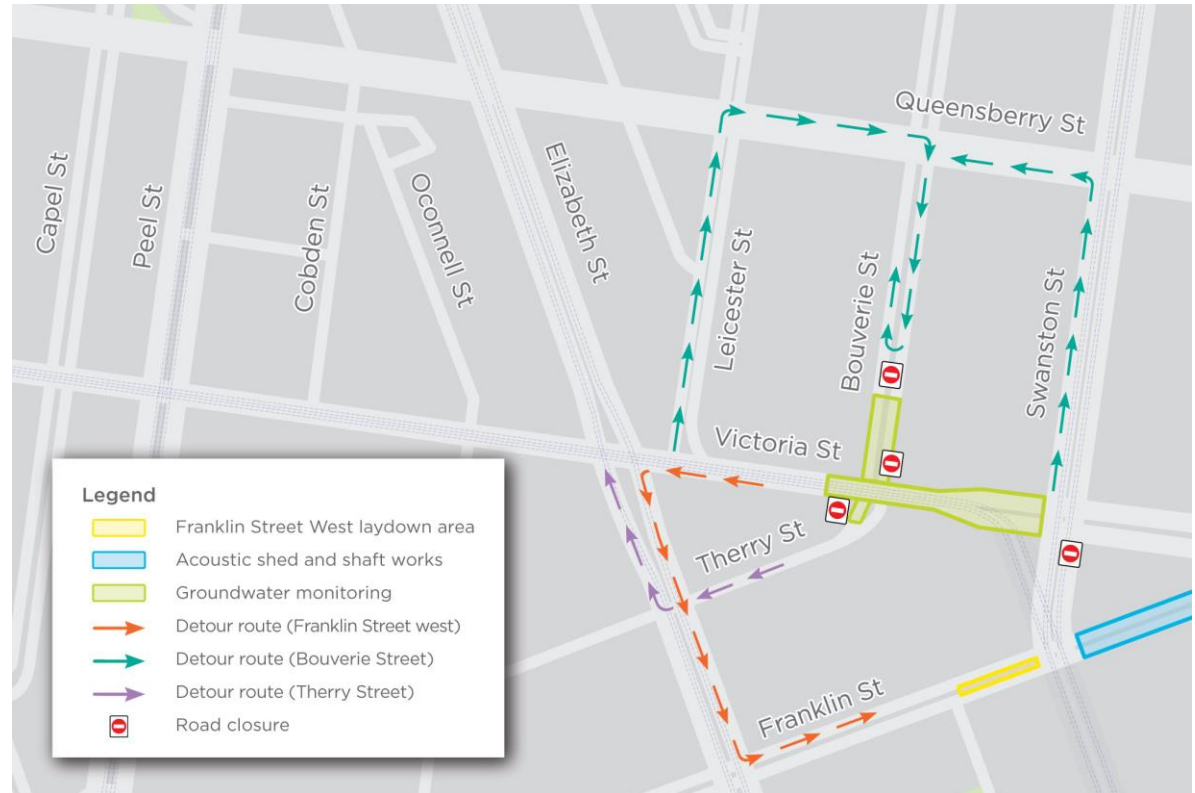




# GROUNDWATER MONITORING UPDATE

- Boreholes – complete
- Water main relocation – complete
- Boring works beneath Victoria Street from Bouverie to Therry streets to connect the west and eastbound boreholes on Victoria Street – from mid-September for three weeks
- Trenching to connect boreholes in Bouverie Street – ongoing until early October, including weekend works
- Commissioning ground water monitoring system – until December

# GROUNDWATER MONITORING WORKS UPDATE





**QUESTIONS?**



## CROSS YARRA PARTNERSHIP DESIGN & CONSTRUCTION

---

MEETING 13 – CBD COMMUNITY REFERENCE GROUP  
31 AUGUST 2018



# AGENDA

1. State Library Update
2. Town Hall Update
3. Environmental Monitoring Update
4. Federation Square Heritage Application
5. Federation Square indicative construction staging



# STATE LIBRARY UPDATE



# LITTLE LA TROBE STREET SITE UPDATE

Activity	Involves	Timing
Service relocations (HV)*	<ul style="list-style-type: none"> <li>• Installation of electrical services</li> <li>• Reinstatement of surfaces</li> </ul>	26 July – 21 August (completed)
Service relocations (gas)*	<ul style="list-style-type: none"> <li>• Excavation of service trenches</li> <li>• Installation of gas services</li> <li>• Backfilling trenches and reinstating surfaces</li> </ul>	2 – 21 September 2018 3:30pm – 10pm, Monday to Friday 7am – 1pm, Saturdays (if required) 10am – 5pm, Sundays
Demolition	<ul style="list-style-type: none"> <li>• Demolition of three buildings</li> <li>• Changed traffic conditions in Little La Trobe Street and Literature Lane</li> </ul>	Late September – December

*\*further gas service relocations will be required*

# SERVICE RELOCATION (GAS) – TRAFFIC



*Indicative only*

# LA TROBE STREET SITE UPDATE

Activity	Involves	Timing
Archaeology	<ul style="list-style-type: none"> <li>Using a small excavator and hand tools to excavate the area</li> </ul>	Ongoing – mid October
Driveway installation	<ul style="list-style-type: none"> <li>Intermittent footpath closures of the northern La Trobe Street footpath</li> <li>Scaffold removal and installation</li> </ul>	27 August – mid September 2018
Site establishment	<ul style="list-style-type: none"> <li>Cribbing deliveries</li> <li>Water tank installation</li> </ul>	Ongoing – end October 2018
Piling preparation	<ul style="list-style-type: none"> <li>Slab demolition using jackhammers and excavator</li> <li>Intermittent footpath closures</li> <li>Crushed rock deliveries</li> <li>Rock compaction</li> </ul>	Early September – late November
Piling	<ul style="list-style-type: none"> <li>Piling rig delivery</li> <li>Reinforcement deliveries</li> <li>Concrete deliveries</li> </ul>	Late October 2018 – ongoing

# FRANKLIN STREET WEST SITE UPDATE

Activity	Involves	Timing
Set up construction shaft site and laydown area	<ul style="list-style-type: none"><li>• Closure of westbound lane to Franklin Street between Swanston Street and Stewart Street</li><li>• Construction of support site laydown area</li></ul>	27 August – mid September 2018
Piling platform and support works	<ul style="list-style-type: none"><li>• Water treatment tanks set up</li><li>• Build piling platform</li><li>• Material deliveries to laydown area</li></ul>	September – October 2018
Piling at shaft site	<ul style="list-style-type: none"><li>• Piling (72 piles) at approx. 30m</li><li>• Reinforcement deliveries</li><li>• Concrete deliveries</li></ul>	October 2018 – April 2019

# FRANKLIN STREET WEST – TRAFFIC CHANGES



*Indicative only.*



# TOWN HALL UPDATE

# FLINDERS QUARTER UPDATE

Activity	Involves	Timing
Archaeology	<ul style="list-style-type: none"> <li>Using a small excavator and hand tools to excavate the area</li> <li>Asbestos removal in accordance with Victorian Work Cover Requirements</li> </ul>	Ongoing – December 2018
Demolition of archeology footings	<ul style="list-style-type: none"> <li>Using jackhammers, excavators, and a tipper truck to remove previous building footings</li> </ul>	September – December 2018
Gantry modifications	<ul style="list-style-type: none"> <li>Modifying gantries on Swanston Street</li> <li>Installation of new site access gate</li> </ul>	September 2018
Port Phillip Arcade basement demolition*	<ul style="list-style-type: none"> <li>Using jackhammers and excavators</li> <li>Removal of rubble</li> </ul>	October – November 2018
Piling preparation works	<ul style="list-style-type: none"> <li>Crushed rock deliveries</li> <li>Rock compaction</li> <li>Perimeter cutting</li> <li>Piling rig deliveries (nightworks)</li> </ul>	October – December 2018
Piling	<ul style="list-style-type: none"> <li>Piling (258 piles) at approx. 38 m</li> <li>Reinforcement deliveries</li> <li>Concrete deliveries</li> </ul>	Late January – July/August 2019

\*Negotiating scope with EWMC

# CITY SQUARE UPDATE

Activity	Involves	Timing
<b>Flinders Lane civil nightworks</b>	<ul style="list-style-type: none"> <li>• Kerb modifications</li> <li>• Bollard installation</li> <li>• Hoarding reinstatement</li> <li>• Delivery of an excavator to site via Collins Street</li> </ul>	3 – 6 September 2018 Between 9pm – 7am
<b>Material removal</b>	<ul style="list-style-type: none"> <li>• Utilising a conveyor to load rubble onto trucks in the Flinders Lane loading bay</li> <li>• Some hammering may be required</li> <li>• Some out of hours spoil removal</li> </ul>	Ongoing
<b>Piling preparation works</b>	<ul style="list-style-type: none"> <li>• Removal of existing concrete to facilitate piling works</li> <li>• Some hammering may be required</li> </ul>	Ongoing – October 2018
<b>Piling</b>	<ul style="list-style-type: none"> <li>• Piling (148 piles) at approx. 32 m</li> <li>• Reinforcement deliveries</li> <li>• Concrete deliveries</li> </ul>	Ongoing – January 2019



# CITY SQUARE – CIVIL NIGHT WORKS TRAFFIC ARRANGEMENTS

CBD South Precinct - Site layouts



Indicative only.

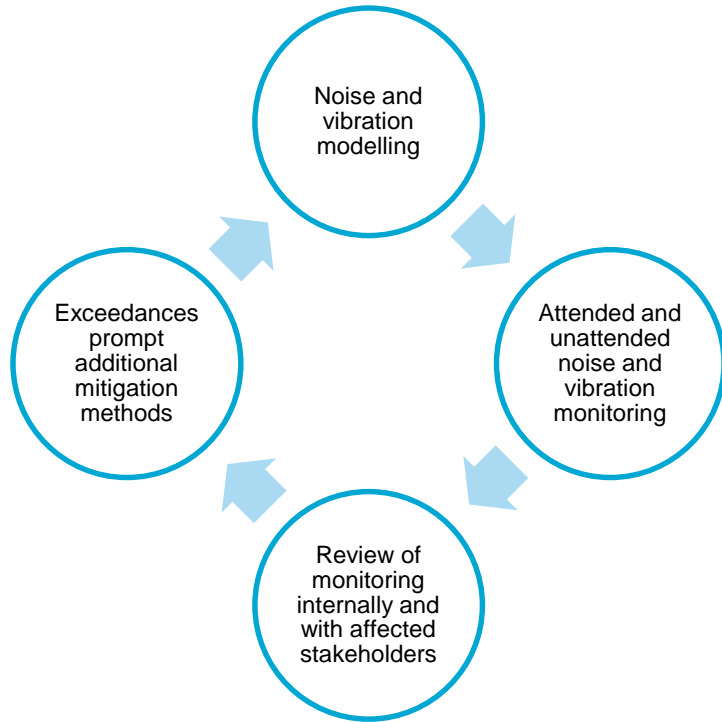
- Installation of a conveyor with a shield to facilitate the safe removal of rubble from site
- Improved traffic flow on Flinders Lane





# ENVIRONMENTAL MONITORING UPDATE

# ENVIRONMENT MONITORING PROCESS



*Environmental monitoring process*

**Construction Noise and Vibration Impact Assessments (CNVIA)** are prepared for **each stage of construction**:

- Outline construction activities and the potential noise and vibration impacts
- Identify which construction activities and equipment will require mitigation methods
- Shared with directly impacted key stakeholders for review and discussion of proposed mitigation measures

# MANAGING NOISE AND VIBRATION IMPACTS

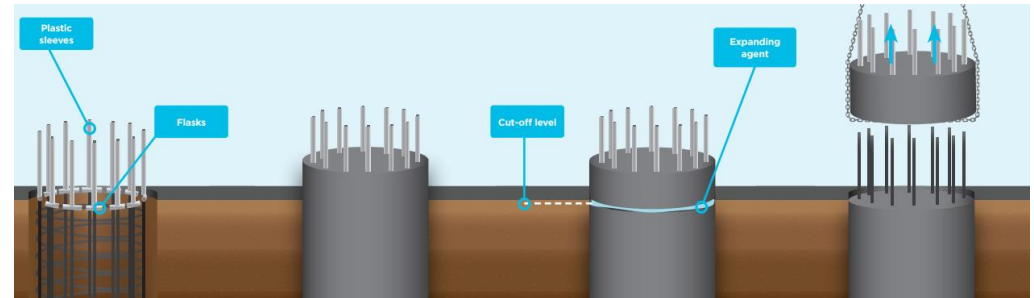
Three levels of management:

1. Management controls (e.g. review of construction methodologies, programming of works etc.)
2. At source (e.g. equipment location, equipment use, noise attenuation measures etc.)
3. Path control mitigation measures (e.g. shielding stationary noise sources etc.)

**Example:** Management Control (construction methodology) for pile top removal process:

- Removes need to jackhammer off pile tops, reducing noise
- Pile tops removed by installing flasks fixed to reinforcement cage that reacts during concrete curing to crack concrete at cut off levels

*See below*



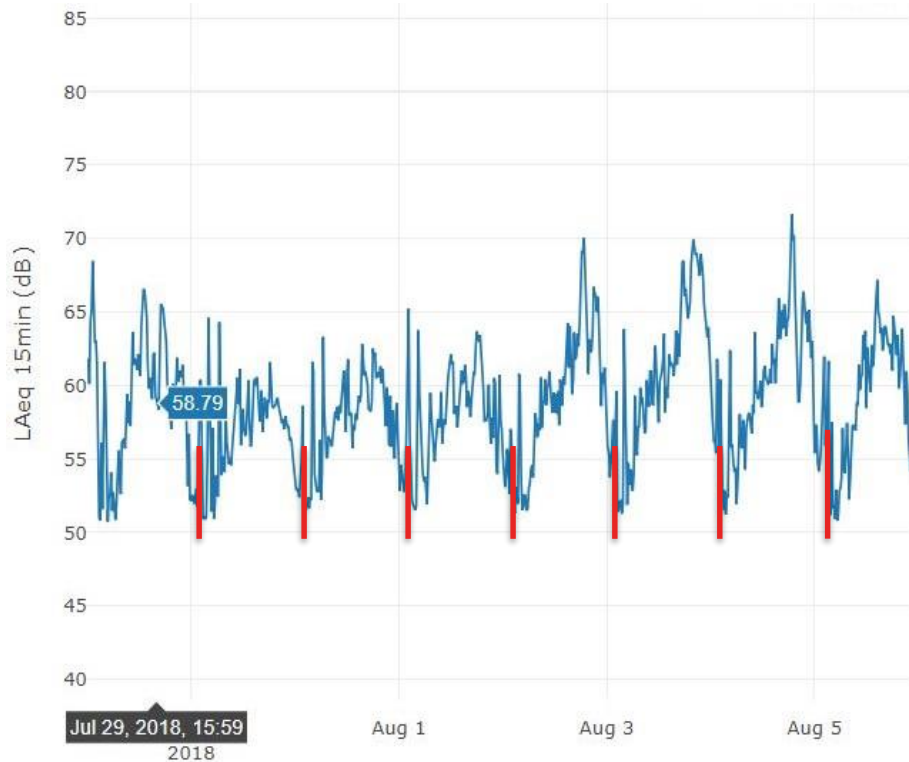
# CURRENT MONITORING AT CITY SQUARE

CYP monitoring at:

- Town Hall
- The Westin
- St Paul's Cathedral



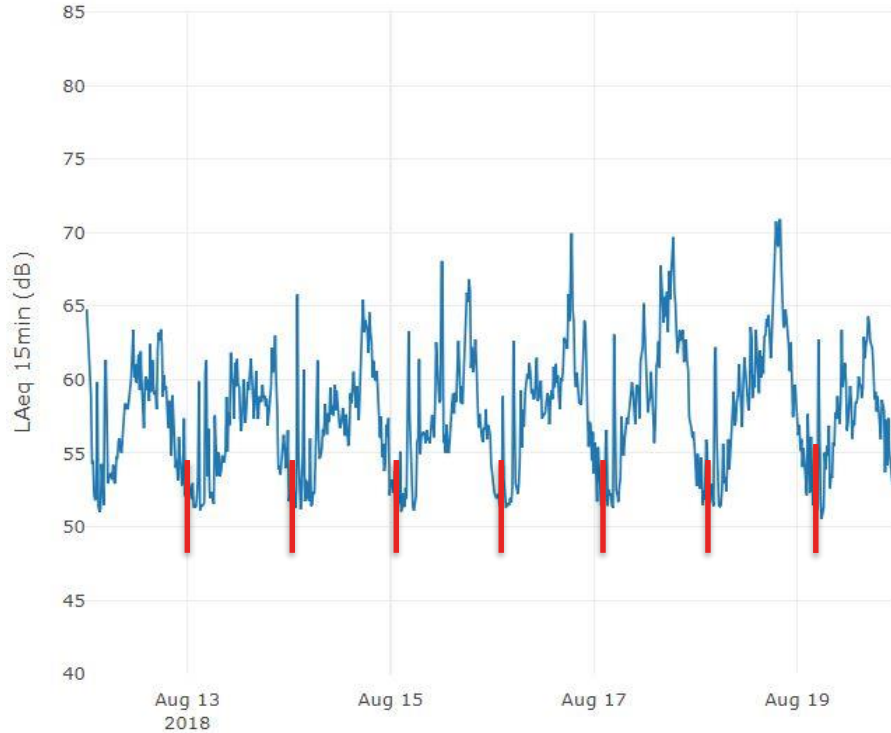
# CURRENT MONITORING AT CITY SQUARE – WESTIN MONITOR



Baseline reading prior to City Square Piling

- Key**
- Day marker
  - Noise levels (LAeq levels)

# CURRENT MONITORING AT CITY SQUARE – WESTIN MONITOR



First week of piling  
in City Square

- Key**
- Day marker
  - Noise levels (LAeq levels)





# FEDERATION SQUARE HERITAGE APPLICATION

# HERITAGE APPLICATION

- **Heritage Victoria (HV) have placed an interim protection order (IPO)** on Federation Square
- No **major work** can begin until December 2018 without permission from HV
- **CYP has lodged a heritage permit application** to complete the Federation Square entrance works
- CYP is engaging with Heritage Victoria, Federation Square, City of Melbourne, St Paul's Cathedral, the National Trust and other stakeholders

**Link:** <https://www.heritage.vic.gov.au/permits/currently-advertised-permits>

**Submissions close Wednesday 12 September 2018**

# EXEMPTION APPLICATION

CYP was granted an **IPO exemption** on **Monday 27 August 2018** to undertake **minor works** from early September 2018. Minor works involve:

- Installing an accessibility ramp near the 7/11 store
- Installing temporary fencing around the former Melbourne Visitor Centre
- Installing a wrap around the former Melbourne Visitor Centre
- Undertaking geotechnical investigations within the Melbourne Visitor Centre
- Intermittent closures of left turn lane on Flinders Street closest to Federation Square from 4 September 2018 to facilitate these works



# VIEW FROM FLINDERS STREET STATION





# AERIAL VIEW



CONCEPT IMAGE ONLY

# MATERIALITY & REFERENCE



St Paul's Cathedral



Flinders Station



Eastern Shard



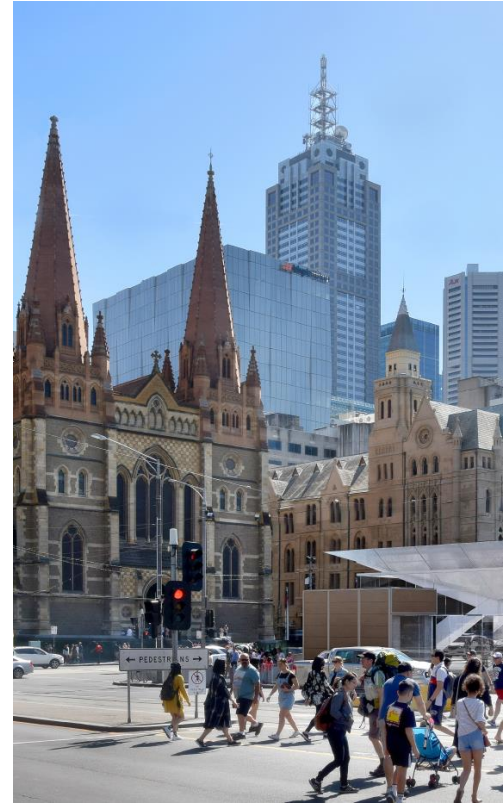
Sandstone



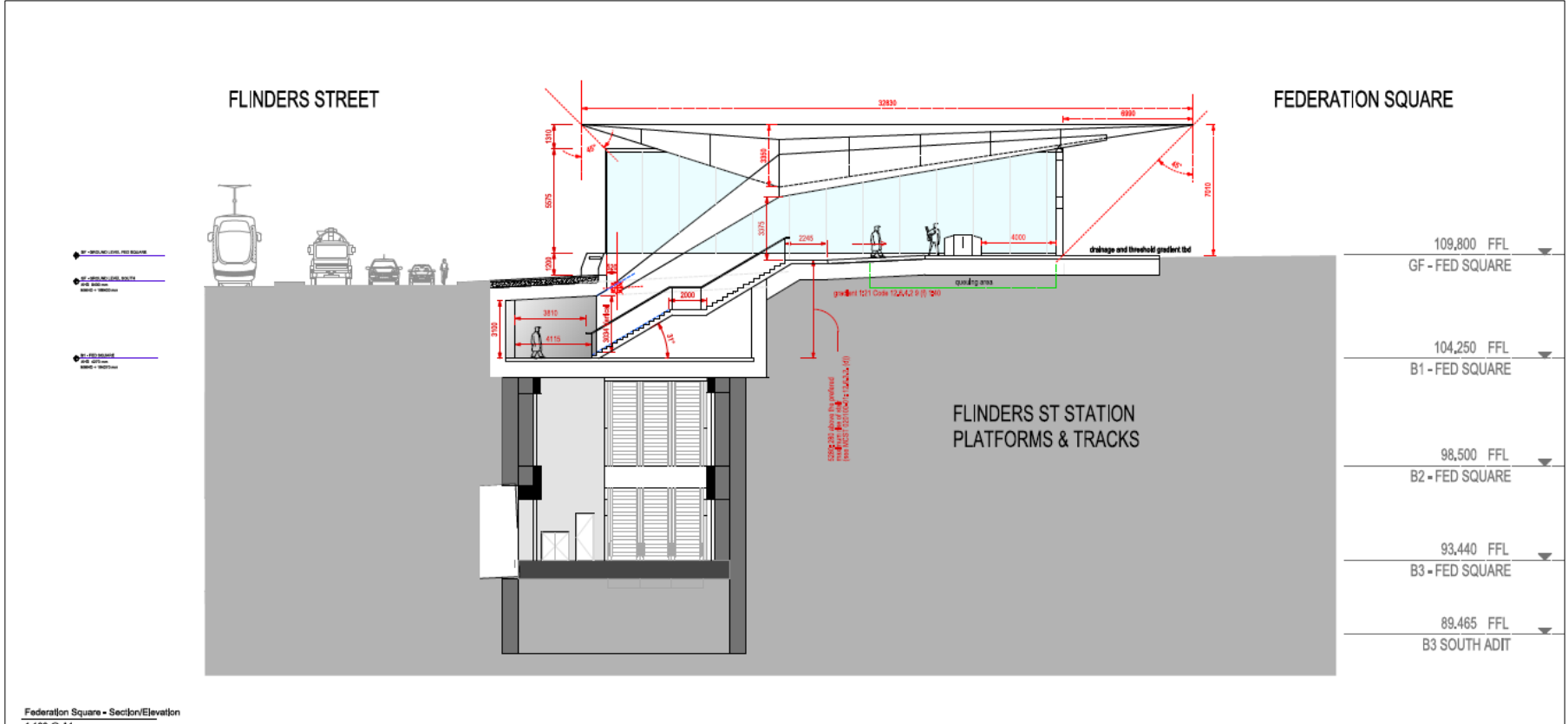
Bluestone



Stainless Steel

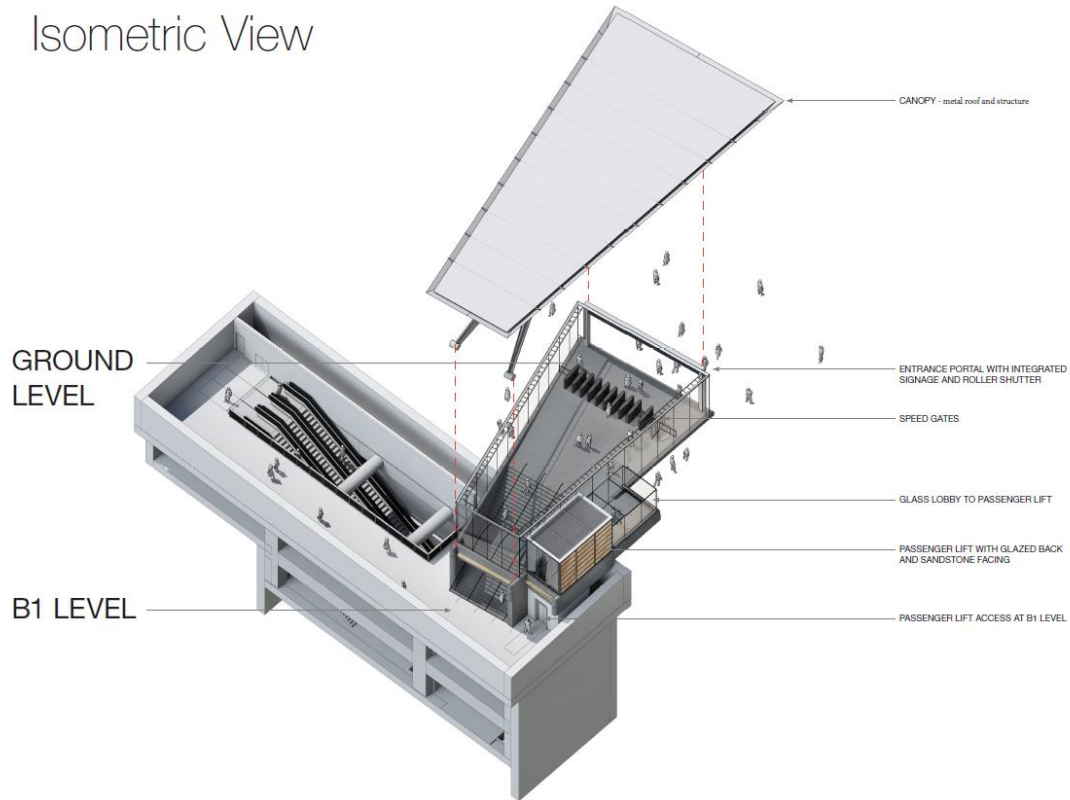


# CROSS SECTION OF ENTRANCE




# ISOMETRIC VIEW

Isometric View

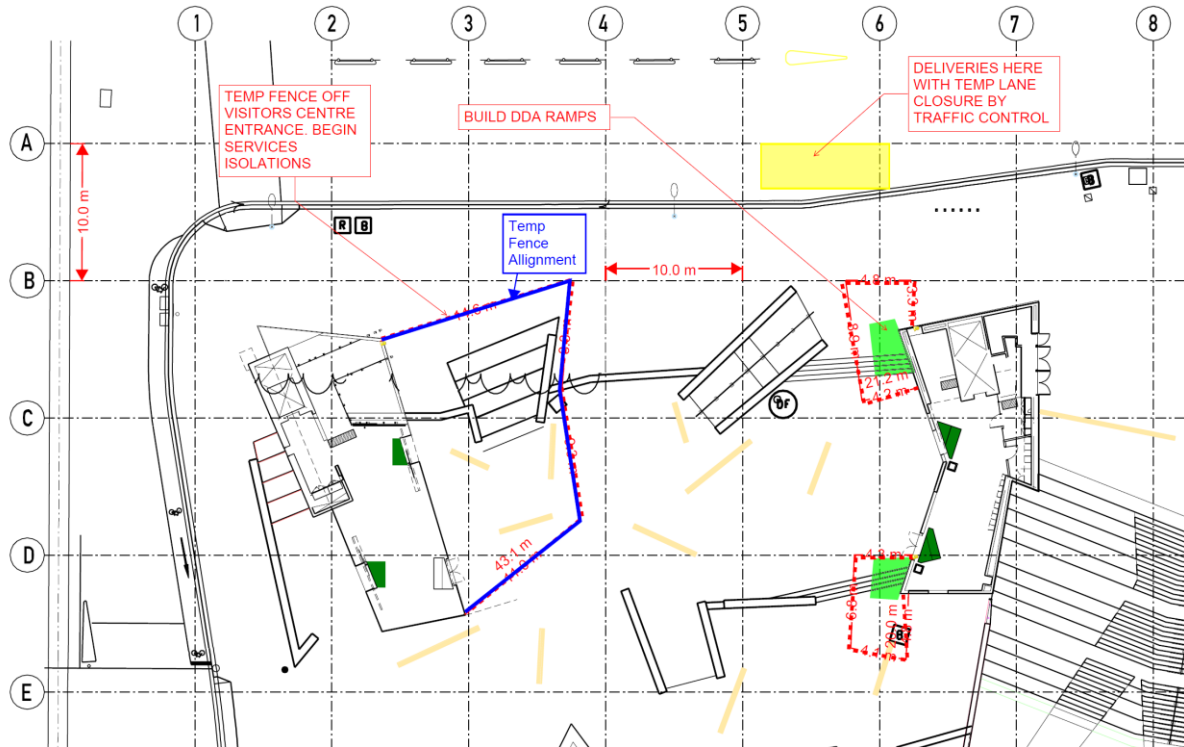






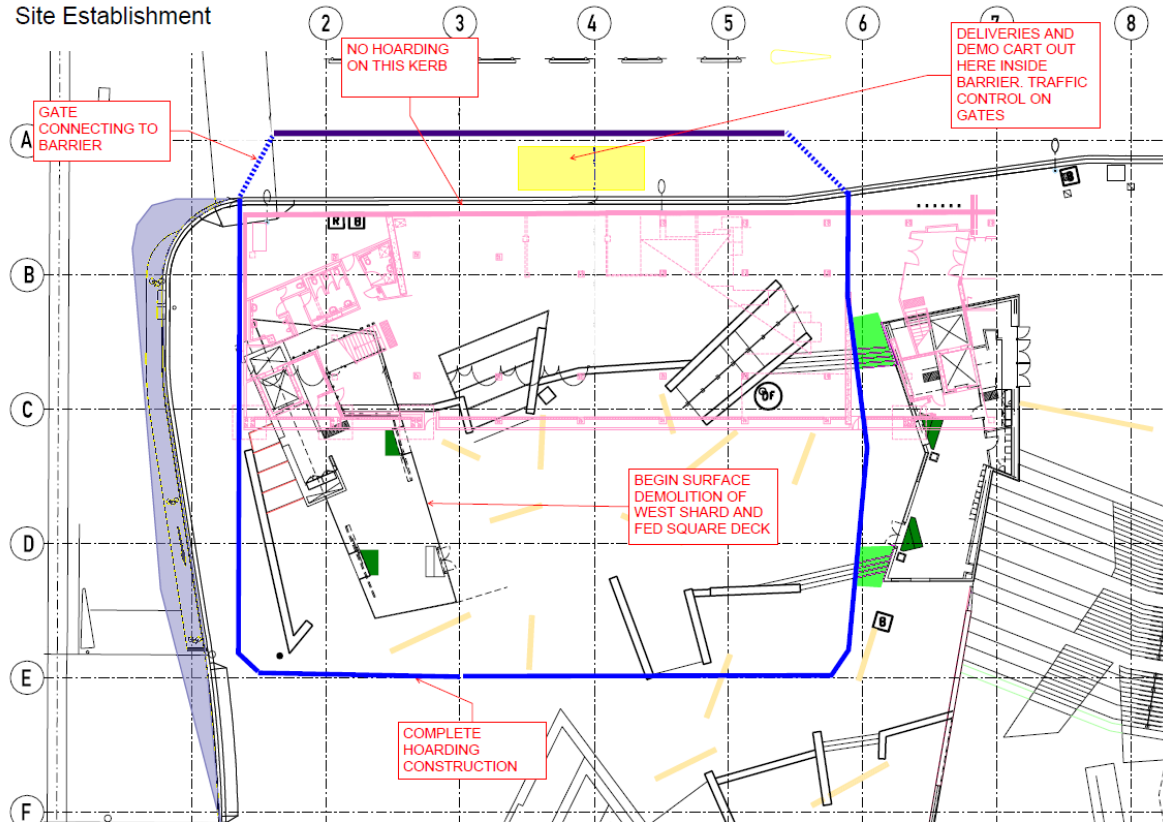
# FEDERATION SQUARE INDICATIVE CONSTRUCTION STAGING

# SITE ESTABLISHMENT – STAGE ONE

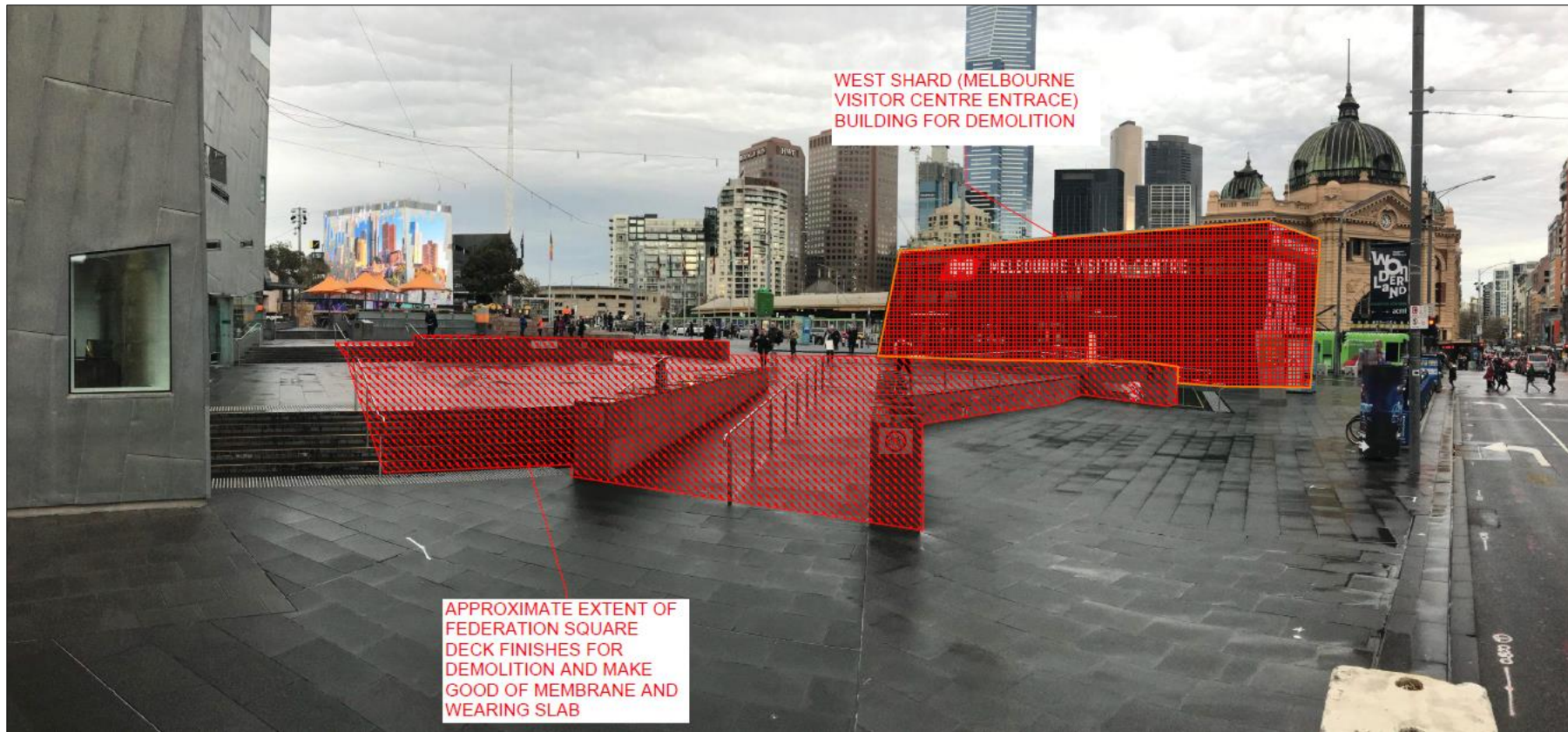


# SITE ESTABLISHMENT – STAGE TWO

Site Establishment



# DEMOLITION

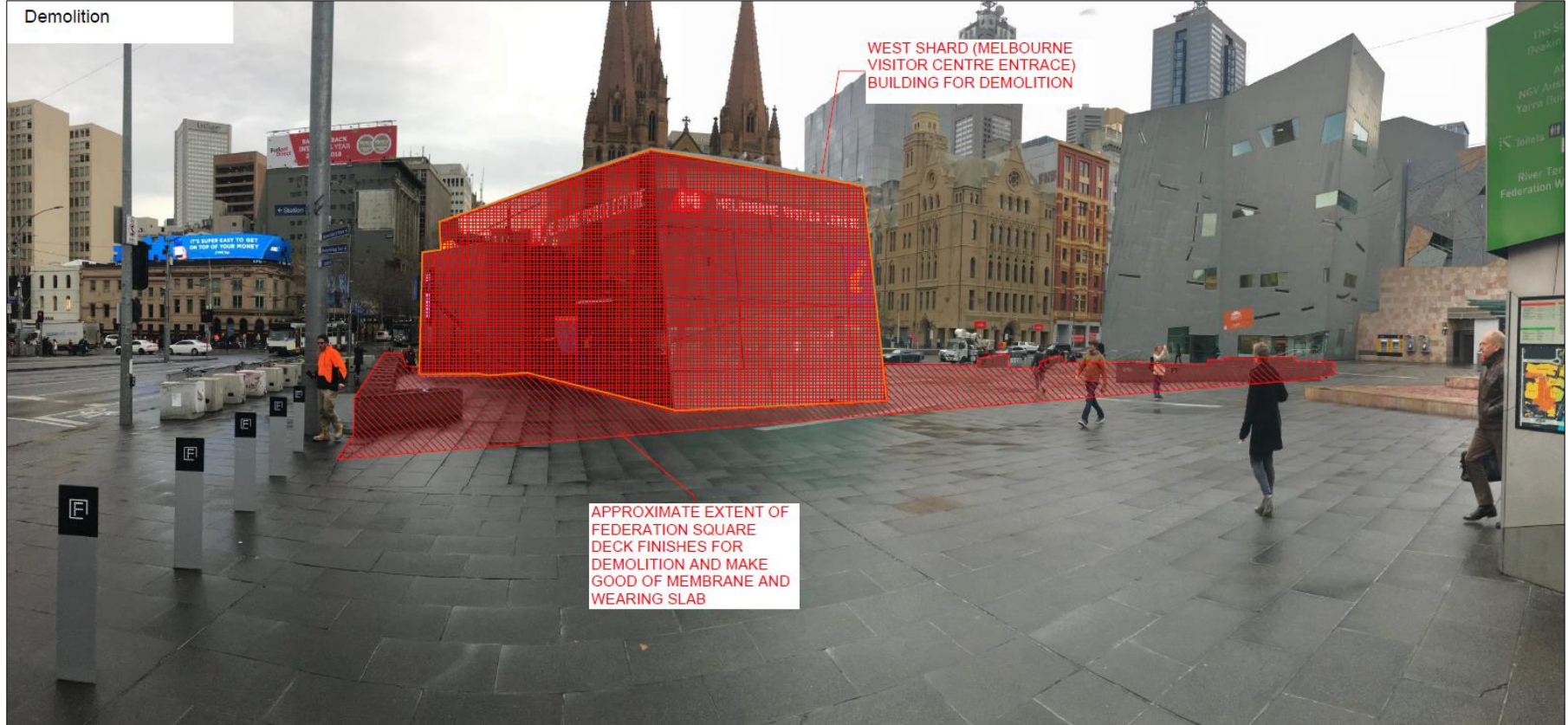


WEST SHARD (MELBOURNE VISITOR CENTRE ENTRANCE) BUILDING FOR DEMOLITION

APPROXIMATE EXTENT OF FEDERATION SQUARE DECK FINISHES FOR DEMOLITION AND MAKE GOOD OF MEMBRANE AND WEARING SLAB

# DEMOLITION

Demolition



WEST SHARD (MELBOURNE)  
VISITOR CENTRE ENTRANCE  
BUILDING FOR DEMOLITION

APPROXIMATE EXTENT OF  
FEDERATION SQUARE  
DECK FINISHES FOR  
DEMOLITION AND MAKE  
GOOD OF MEMBRANE AND  
WEARING SLAB

# FEDERATION SQUARE ACOUSTIC SHED

- Indicative construction date:  
June 2019
- Shed statistics: 18 metres high,  
40 metres long, 13 metres wide
- Creative treatments will be  
installed





# QUESTIONS