



CBD COMMUNITY REFERENCE GROUP

CROSS YARRA PARTNERSHIP
20 SEPTEMBER 2019



Construction partner:





SEPTEMBER CBD COMMUNITY REFERENCE GROUP

Mark Wells, Manager of Land, Planning & Environment, CYP & DC

Melinda Kelly, State Library Station Stakeholder Engagement Manager, CYP & DC

Blythe Chidgey, Town Hall Station Stakeholder Engagement Manager, CYP & DC

Mary Parker, Director of Communications and Creative, CYP & DC

Friday 20 September 2019



Construction partner:

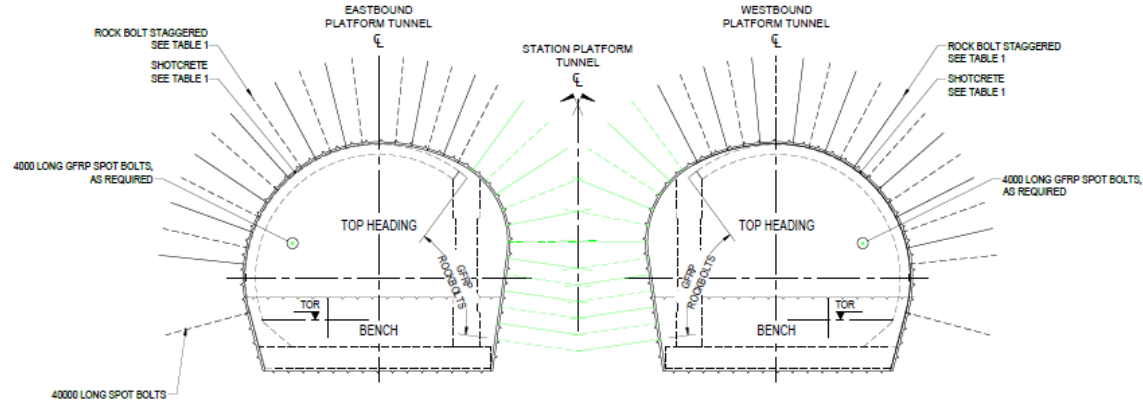


AGENDA

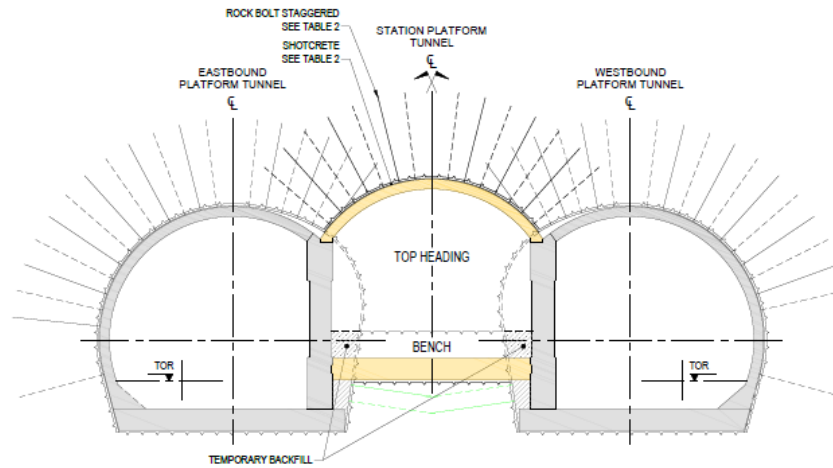
1. Rock Anchors and Rock Bolting
2. State Library Station Update
3. Creative Strategy Update
4. Town Hall Station Update
5. Flinders Link Update

ROCK ANCHORS AND ROCK BOLTING

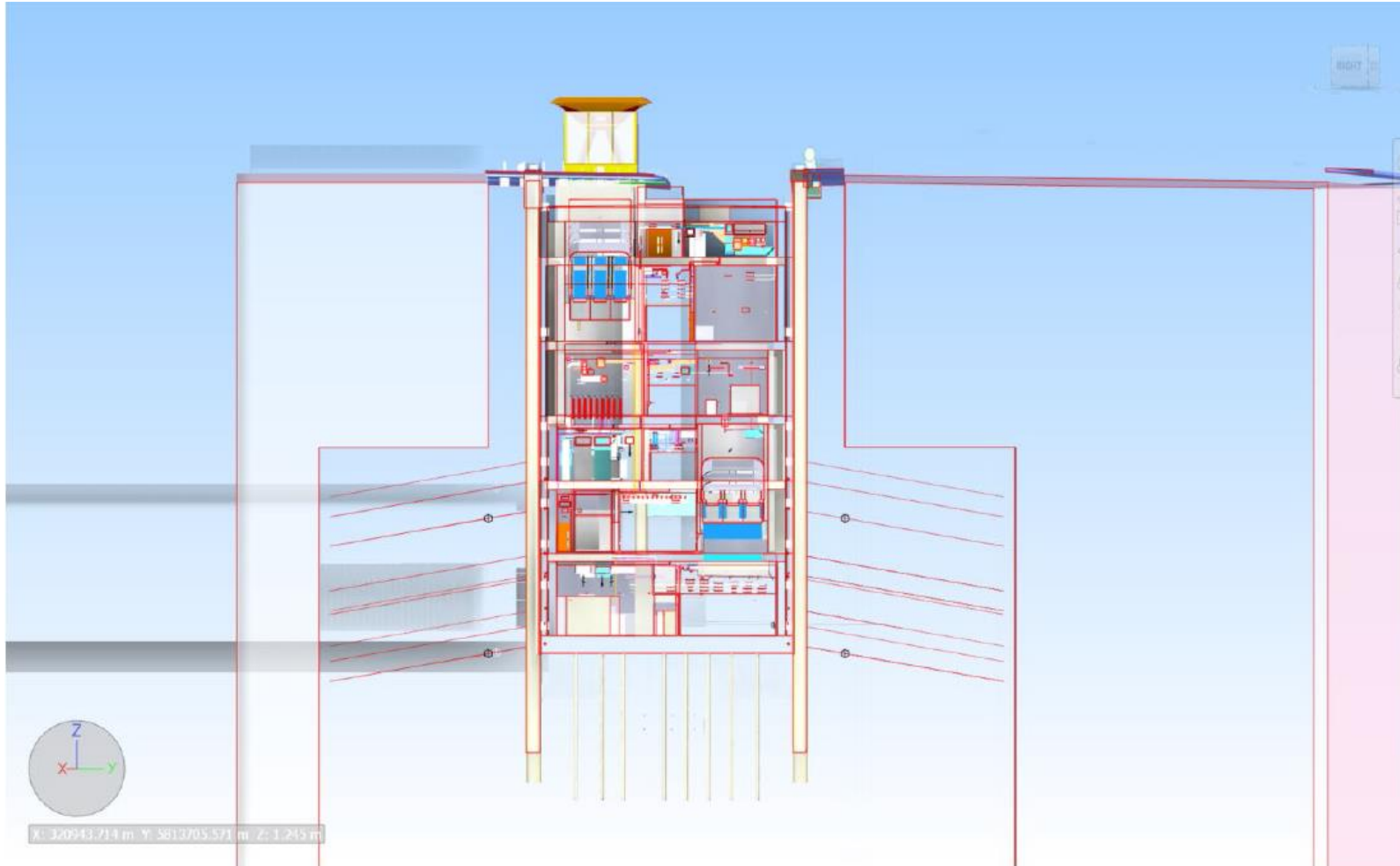
MINED CAVERNS - BOLTS



EXCAVATION & SUPPORT OF
EASTBOUND & WESTBOUND PLATFORM TUNNEL
1:200



SHAFTS - ANCHORS





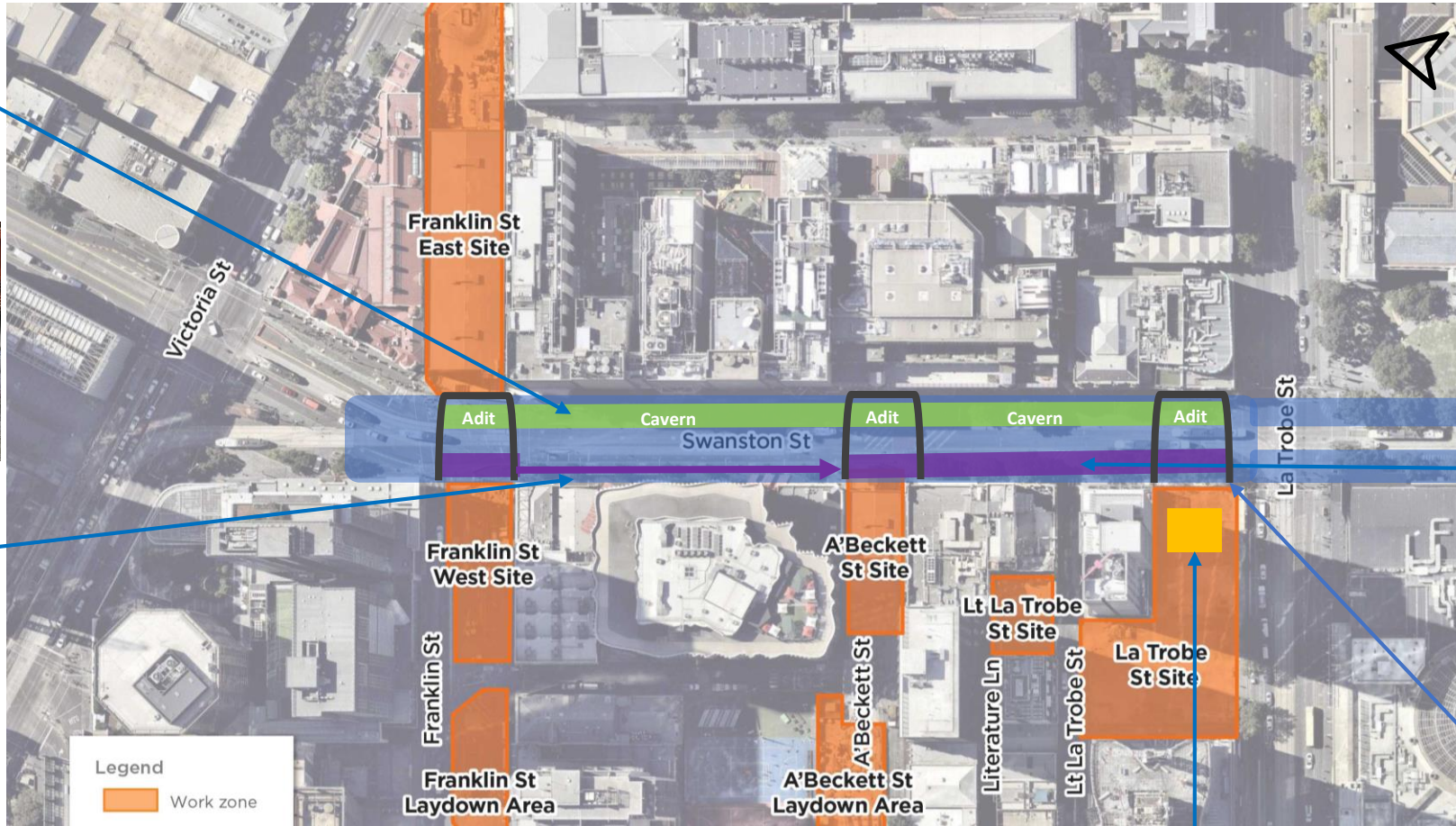
STATE LIBRARY STATION UPDATE



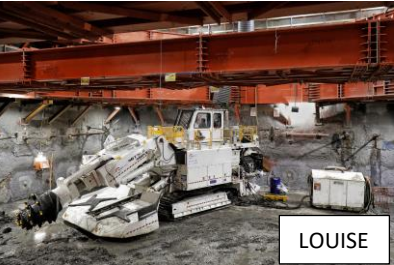


EXCAVATION UPDATE

EXCAVATION UPDATE



Heading complete from Franklin East to La Trobe Adit ✓



LOUISE

Louise
 - Currently digging bench 1 from Franklin St towards A'Beckett (central cavern)



JANE



CLARA

Jane and Clara
 - Completed shaft excavation at A'Beckett ✓
 - Completed bench 1 between La Trobe and A'Beckett ✓



MELINDA

Melinda completed Top heading and bench 1 within La Trobe Adit. Demobilised this week ✓

La Trobe temp shaft backfill commenced ✓



FRANKLIN STREET WEST UPDATE

FRANKLIN STREET WEST UPDATE

Activity	Location	Sept	Oct	Nov	Dec	Jan	Feb
Deck construction	Site	—●					
Acoustic shed construction	Site		—●				
Shaft excavation	Site	—●					
Overhead gantry	Franklin St		—●				

FRANKLIN STREET WEST OUT OF HOURS WORKS

Structural steel installation for the Franklin Street West shaft site

- Monday to Fridays, 7am to 10pm
- Saturdays, 7am to 5pm

Oversized deliveries

- 1am to 5am



LITTLE LA TROBE STREET UPDATE

LITTLE LA TROBE STREET SITE UPDATE

Activity	Sept	Oct	Nov	Dec	Jan
Piling pad construction					
Piling					



LA TROBE STREET UPDATE

LA TROBE STREET SITE UPDATE

Activity	Location	Sept	Oct	Nov	Dec	Jan
Excavation	Site	[Activity spans from Sept to Jan]				
Perimeter piling and plunge columns	Site	[Activity spans from Sept to Jan]				
Plant demobilisation	Site	[Activity spans from Sept to early Oct]				
Micro piling works and shaft backfilling	Site	[Activity spans from Sept to Dec]				
La Trobe St service works	La Trobe St	[Activity spans from Sept to early Oct]				

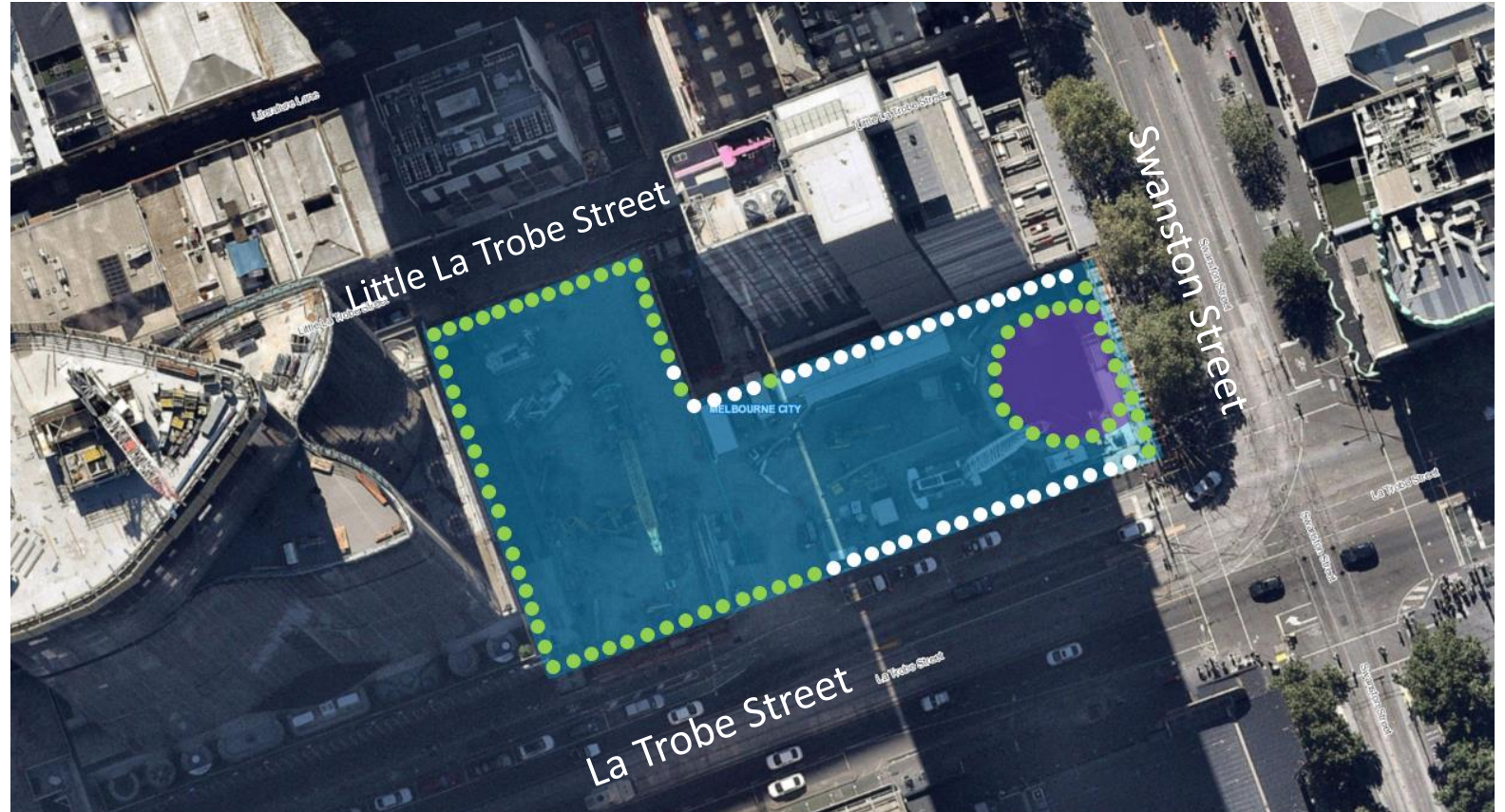
LA TROBE STREET SITE PILING

Perimeter piling

- 97 of 172 completed

Plunge column

- 56 plunge columns to be completed



LA TROBE OUT OF HOURS WORKS

Piling works

- Monday to Fridays, 7am to 6pm
- Saturdays, 7am to 6pm
- Mondays to Fridays, 6pm to 10pm, *concrete pours as required*

Backfilling temporary shaft

Micropiling (25m below surface):

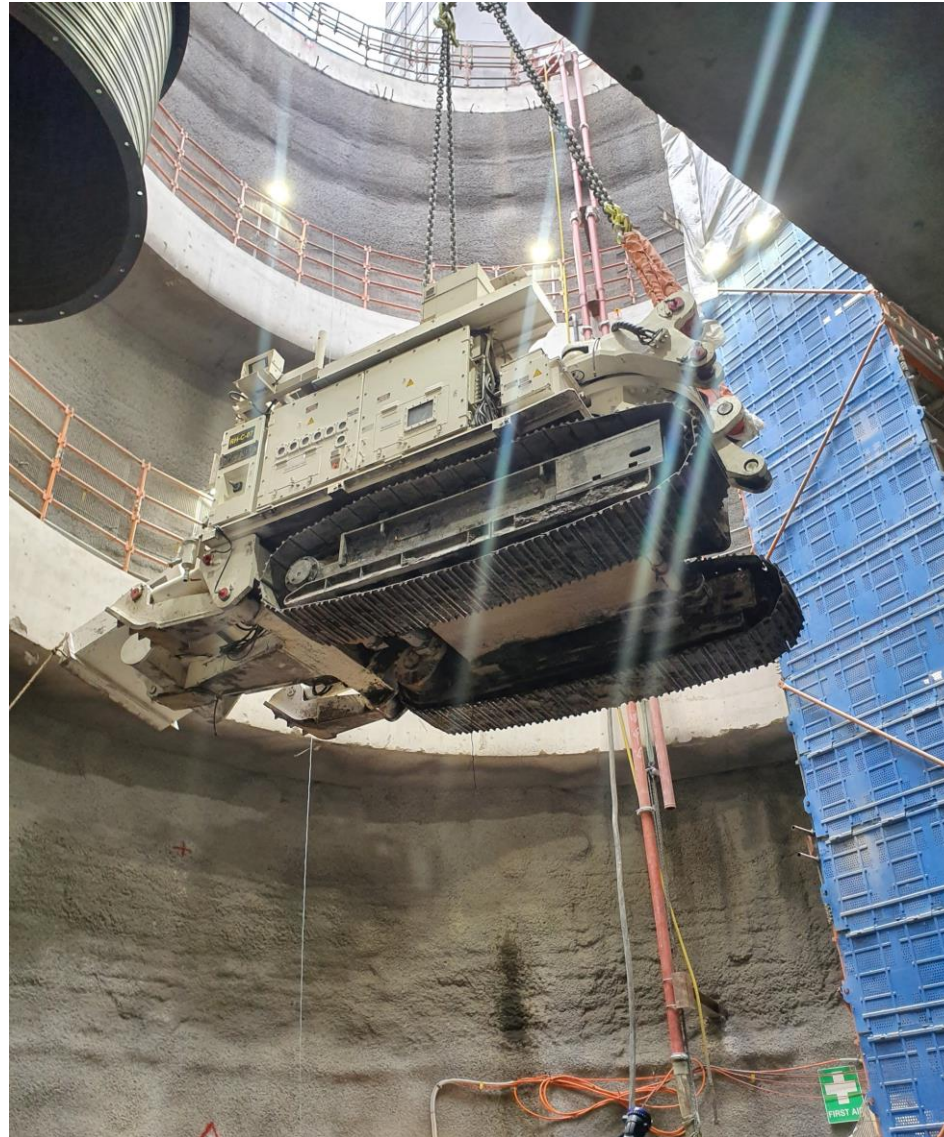
- Monday to Saturdays, 7am to 10pm

Installation of cages and concrete pours:

- Monday to Saturdays, 10pm to 6am

Tunnelling

- Monday to Sundays, 24/7 ongoing



Melinda the roadheader being lifted from the temporary La Trobe shaft



CREATIVE STRATEGY UPDATE



STATE LIBRARY CREATIVE

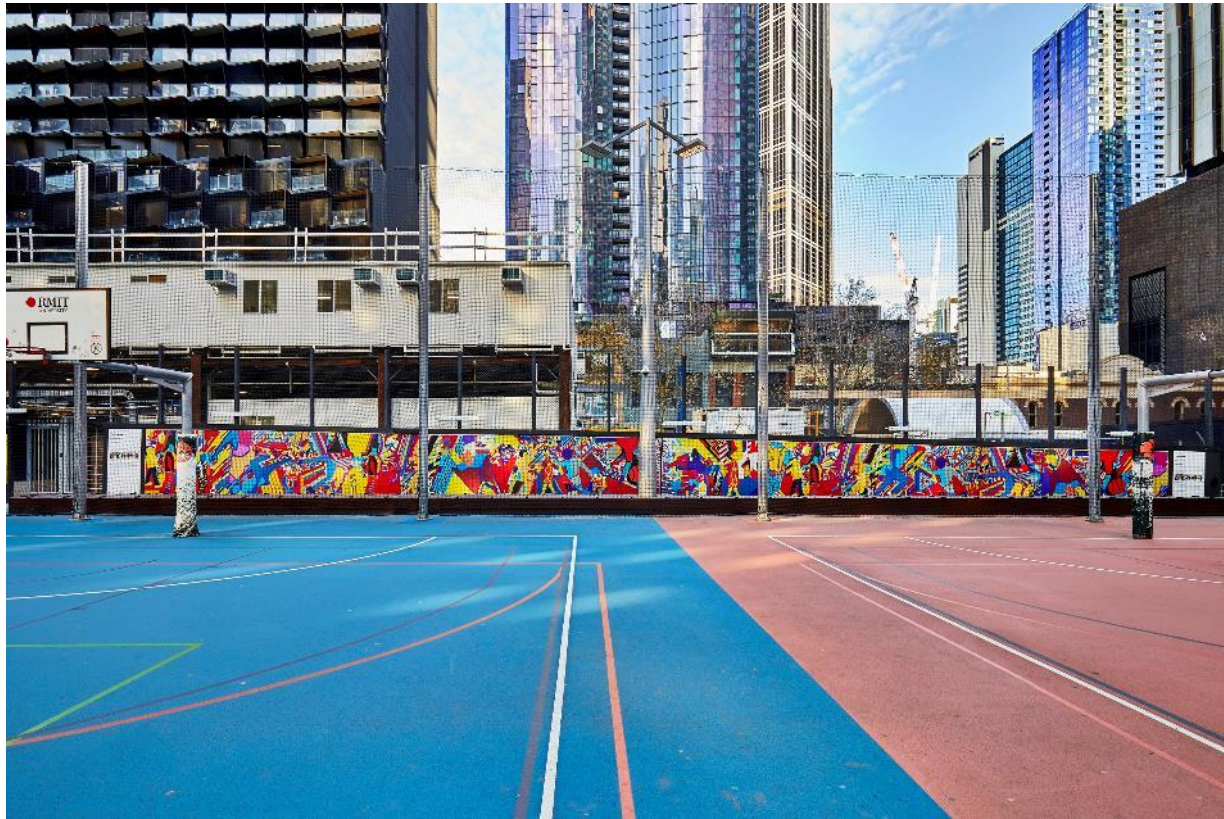
RMIT SCHOOL OF FASHION



FACES OF FRINGE PHOTO ESSAY



URBAN SQUARE – PAOLA IBARRA





TOWN HALL CREATIVE

FLINDERS ST CLOSURE - CURRENT



FLINDERS ST CREATIVE WAYFINDING (CONCEPT ONLY)



FLINDERS ST CREATIVE BUSINESS SIGNAGE (CONCEPT ONLY)



CITY SQUARE HOARDINGS - CURRENT



CITY SQUARE HOARDINGS - UPCOMING



FEDERATION SQUARE SCREENS



FEDERATION SQUARE – FACING EAST SHARD



- Taj Alexander AKA Swoop & Melodie
- Install to start October 28

FED SQUARE SHED EMBELLISHMENT

- The intent is to have a frame attached to certain fixing points that won't impact noise attenuation
- Frame will have programmable LED lights affixed that can be changed remotely, and for each side
- The treatment will not be applied on the East Shard facing side of the shed
- This treatment responds to other iconic buildings in the precinct such as the LED lighting on Flinders St Station, the Arts Centre spire and the AAMI stadium
- Timing is Q1/Q2 next year due to fabrication and complexity
- Update to be provided when concept renders are available – later 2019.



CITY SQUARE SHED EMBELLISHMENT

VIC NEWS

US artist Pat Perry wins job to paint mural on Metro Tunnel acoustic shed at City Square

Metro Tunnel works are creating a lot of disruption in the city, but project contractors have come up with a creative solution to ease some of the angst.

John Masanauskas, City Editor, Herald Sun, Herald Sun

Subscriber only | August 8, 2019 1:52pm



CHRISTMAS IN THE CITY

- Phoria AR experience activating Fed Square shed
- Nicholas Building tenant photo essay
- Maker's market in Urban Square



TOWN HALL STATION UPDATE





FLINDERS QUARTER

FLINDERS QUARTER WORKS UPDATE

Activity	Location	Sept	Oct	Nov	Dec	Jan	Feb
Excavation – Shaft A	Internal	●					
Piling – Shaft B	Internal	●					
Excavation – Shaft B	Internal				●		
Plunge piles	Internal		●				

Shaft B piling

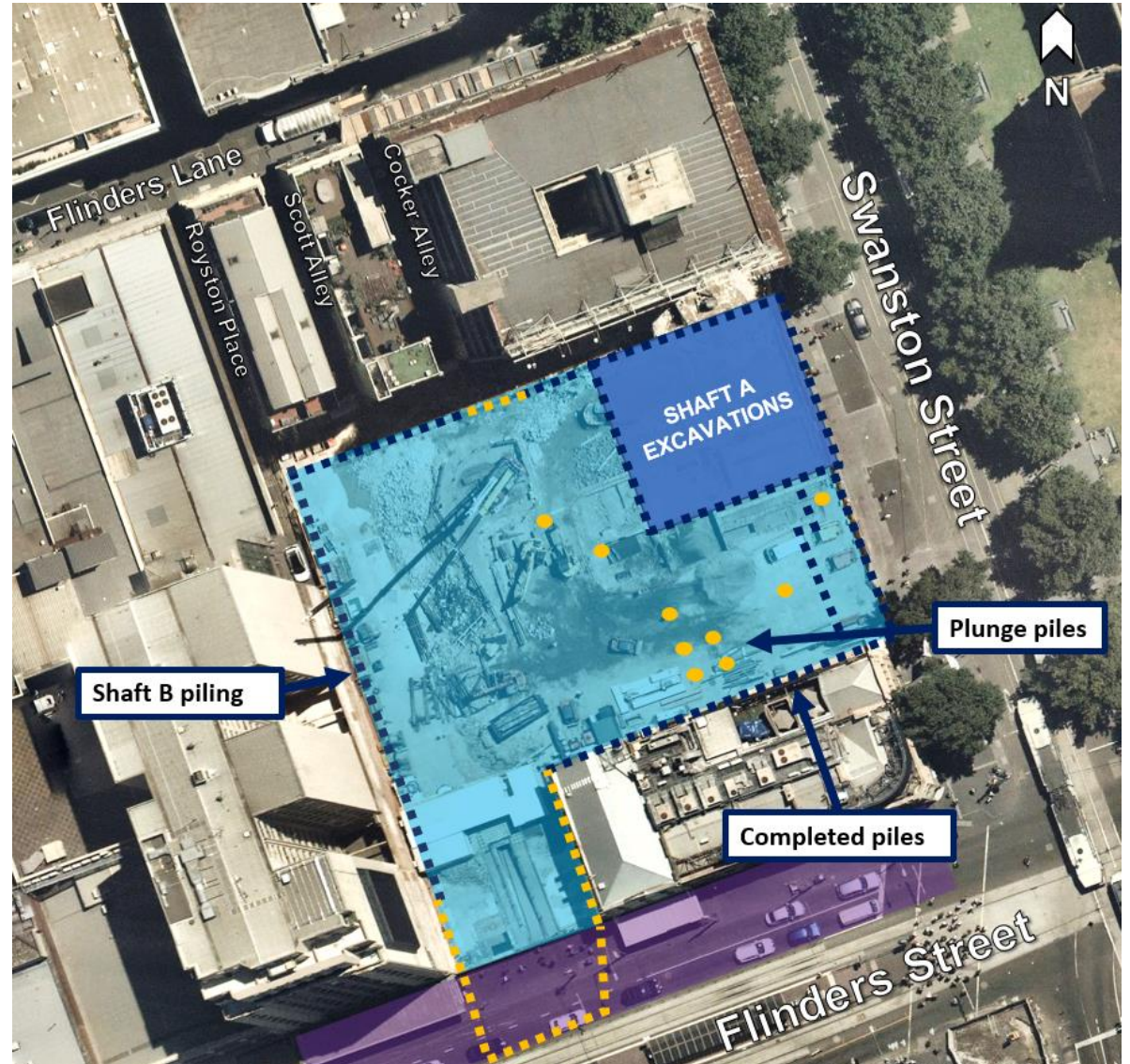
- 136/181 completed
- Piled 3,630/4,691 metres or 77%

Plunge piles

- 9/57 completed

Shaft A excavation

- 8/19 metres complete



FLINDERS QUARTER – OUT OF HOURS WORKS

Preparatory works (ongoing)

Material delivery and removal, concrete pours

- Monday to Fridays, 6pm to 10pm
- Saturdays, 1pm to 5pm

Pile cage deliveries and spoil removal (ongoing)

- Monday to Saturdays, 5am to 7am

Plunge piling and concrete coring

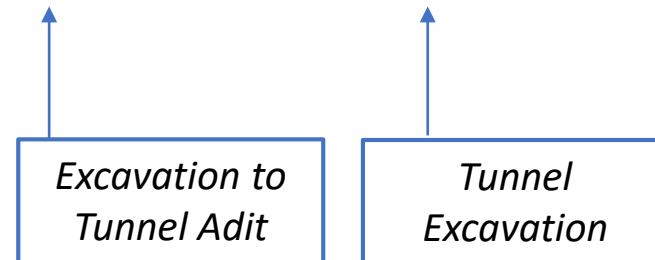
- Monday to Fridays, 7am to 9pm
- Saturdays, 7am to 5pm



FEDERATION SQUARE

FEDERATION SQUARE WORKS UPDATE

Activity	Location	Sept	Oct	Nov	Dec	Jan	Feb
Deck construction	Internal	●—————●					
Acoustic shed construction	Internal		●—————●				
Excavation & Strutting	Internal	●	●—————●				



FEDERATION SQUARE – OUT OF HOURS WORK

Excavation

- Monday to Friday, 24hours
- Saturdays, 6am to 6pm
- Sundays, 7am to 6pm

Deck Construction

- Monday to Friday, 24hours
- Saturdays, 6am to 6pm
- Sundays, 7am to 6pm

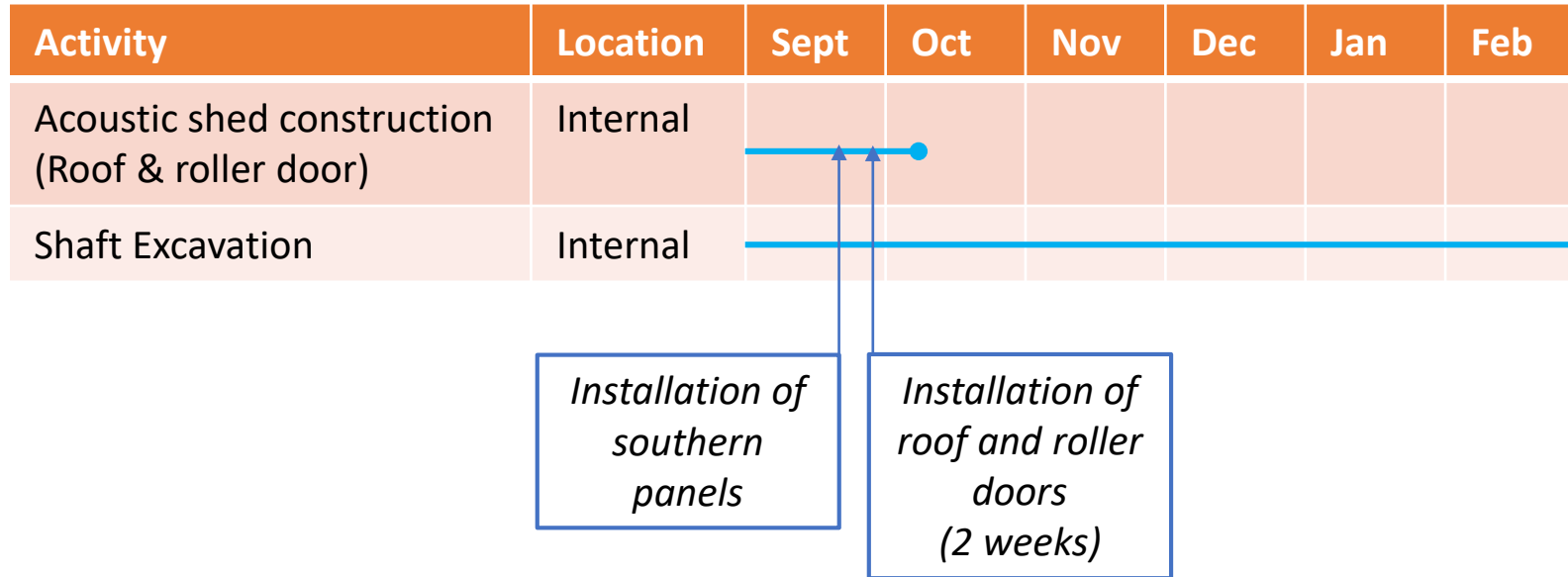
Acoustic shed construction (upcoming)

- Mondays to Fridays, 24 hours
- Saturdays, 6am to 6pm
- Sundays, 7am to 6pm



CITY SQUARE

CITY SQUARE WORKS UPDATE



CITY SQUARE – OUT OF HOURS WORKS

Vehicle movements

Deliveries, waste and spoil removal

- Monday to Fridays, 6pm to 10pm
- Sundays, 10am to 5pm

Works within shaft and acoustic shed

- Monday to Fridays, 24 hours
- Saturdays, 7am to 6pm
- Sundays, 9am to 5pm



FLINDERS LINK


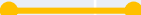
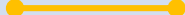
FLINDERS LINK PROGRAM

SEPTEMBER 2019 – NOVEMBER 2020	DECEMBER 2020- NOVEMBER 2021	DECEMBER 2021- DECEMBER 2024
Canopy removal Piling Service works Flinders Street Eastbound lanes closed	Shaft excavations Flinders Street Eastbound lanes closed Footpath reopens	Flinders OSD construction One Flinders Street lane open

FLINDERS LINK WORKS OVERVIEW

Activity	Sept	Oct	Nov	Dec	Jan	Feb
Piling	[Timeline bar from Sept to Feb]					
Canopy removal	[Timeline bar from Sept to Oct]					
Gas relocation works	[Timeline bar from mid-Sept to mid-Oct]					
Sewer relocation works		[Timeline bar from Oct to Dec]				
Water relocation works			[Timeline bar from Nov to Dec]			
Drainage works			[Timeline bar from Nov to Dec]			

FLINDERS LINK GAS RELOCATION WORKS

Activity	Sept	Oct	
Flinders Street Eastbound (extended site footprint)			24 hours
Flinders Street (north/south pedestrian crossing closure)			Sunday to Thursday (10pm-6am)
Flinders Street (Westbound road and footpath changes)			Sunday to Thursday (10pm-6am)

Tram pole works

- 20, 23 and 30 September, 1am to 5am

Hoarding installation

- Between Monday 30 and Tuesday 1 October, 8pm to 6am

Piling rig mobilisation/demobilisation

- Between September 18 and 31 October, 1am to 5am

Piling

- Wednesday 2 to Tuesday 8 October, 24 hours

Gas relocation works

- Ongoing until late October, 10pm to 6am

QUESTIONS?

