



MELBOURNE AIRPORT RAIL



Project newsletter

ISSUE 01 // JANUARY 2021

Connecting Melbourne Airport to our rail network

A rail link to Melbourne Airport has long been talked about and is now a reality, with planning, investigations and design development underway.

The Victorian and Australian governments have announced Melbourne Airport Rail will run from a new station at Melbourne Airport via Sunshine Station, where it will then travel through the Metro Tunnel. There will be direct connections to five inner city locations, including Parkville, St Kilda Road and the heart of the CBD.

Melbourne Airport Rail will provide passengers with 10-minute turn-up-and-go services and an under 30-minute journey into the CBD, and continuing on to the Cranbourne and Pakenham lines.

This provides the quickest trip for the majority of passengers with the least number of interchanges required.

Construction will begin in 2022, with a target opening date of 2029.

The Victorian and Australian governments have committed \$5 billion each to deliver the project, which will support up to 8000 jobs during construction.

Rail Projects Victoria (RPV) is part of the Major Transport Infrastructure Authority (MTIA) and is leading the design and delivery of Melbourne Airport Rail.

RPV wants to hear about what's important to you as we plan and design this project. More information on how you can have your say can be found on the back page of this newsletter.

To learn more please visit the Melbourne Airport Rail website.

Project timeline

- 2018**
 - Sunshine route announced for Melbourne Airport Rail
- 2019**
 - Site investigations commenced
 - Community and stakeholder engagement underway
- 2020-2021**
 - Melbourne Airport Rail route via the Metro Tunnel announced
 - Business case and design development
 - Statutory planning approval process
 - Market engagement
 - Procurement process
- 2022**
 - Start of construction
- 2029**
 - Target opening*

**Subject to relevant Victorian and Federal planning, environmental and other government approvals.*



Australian Government

BUILDING OUR FUTURE



Getting the train to Melbourne Airport

Sunshine route

In 2018 the Victorian Government announced the selection of the Sunshine route as the preferred option for Melbourne Airport Rail, based on a number of factors, including earlier deliverability at a lower cost and superior connections to more areas of regional Victoria and Melbourne.

Melbourne Airport Station

Melbourne Airport Rail services will connect to Melbourne Airport via a new premium station.

New dedicated tracks will be constructed along the existing Albion-Jacana rail corridor between Sunshine and Airport West. The tracks will then cross the M80 Ring Road and head towards the airport following Airport Drive, before arriving at the new station at Melbourne Airport.

Additional stations between Sunshine and the airport are being considered as part of the current planning and design process.

Through the Metro Tunnel

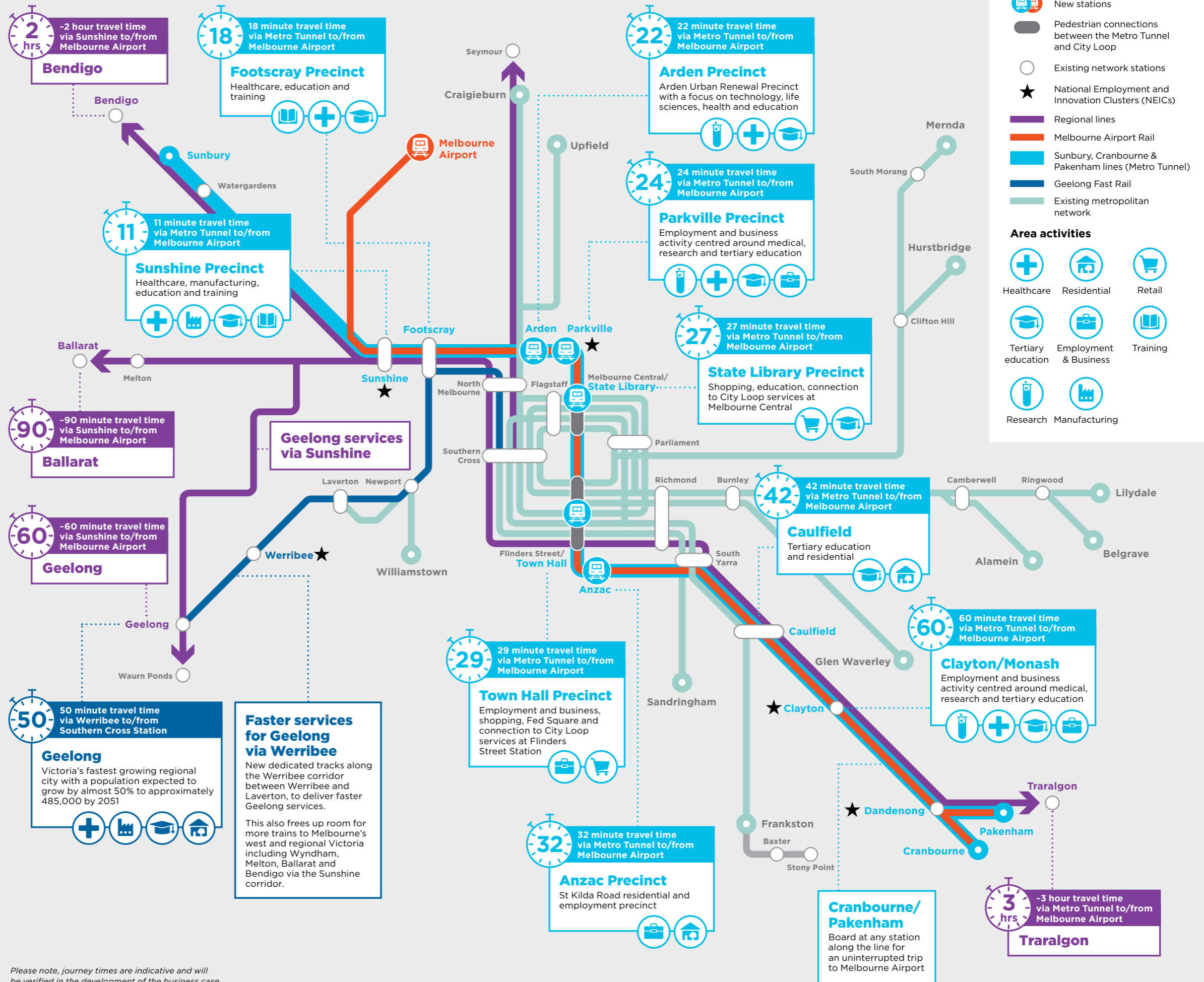
The route through the Metro Tunnel ensures the benefits of this transformational project are delivered to Victorians as quickly and efficiently as possible.

This solution delivers the best connections for all Victorians, getting people to where they want to go with easy transfers to all regional lines and trips into the heart of the CBD in under 30 minutes.

The Metro Tunnel

The Metro Tunnel will create a new end-to-end rail line from Sunbury in the west to Cranbourne and Pakenham in the south-east, with high capacity trains and five new underground stations.

It creates capacity for an extra 500,000 train passengers across the network in peak periods every week.



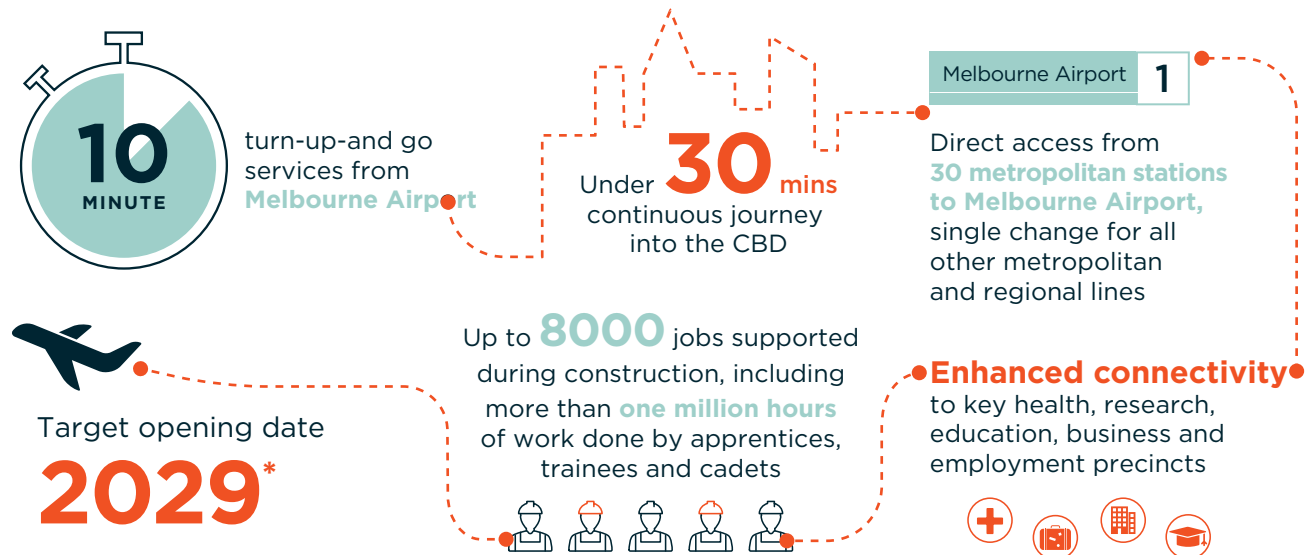
Please note, journey times are indicative and will be verified in the development of the business case.

Delivering benefits for all Victorians

Melbourne Airport Rail will provide a reliable, viable alternative to road travel for all Victorians, without the need to worry about traffic delays or parking.

Through connections at Sunshine, the Metro Tunnel or along the Cranbourne and Pakenham lines, the majority of passengers will be able to travel to Melbourne Airport with only one interchange.

Passengers to the state's north east will also benefit from Melbourne Airport Rail through its future integration with the Suburban Rail Loop, which proposes a new connection at Broadmeadows.



**Subject to relevant Victorian and Federal planning, environmental and other government approvals.*

Victoria's Big Build

Victoria is currently in a transport construction boom with 165 major road and rail projects being delivered and approximately \$80 billion invested. It's not just about current works, with significant planning also underway for a number of projects that are set to transform the way Victorians travel.

Victoria's Big Build continues to create thousands of jobs across Victoria, through record investment in transport infrastructure projects that connect communities and get Victorians where they need to go safer and sooner.

Find out more at bigbuild.vic.gov.au

Have your say

To help plan Melbourne Airport Rail, we want to know more about what's important to you.

This could include station facilities, walking and cycling connections, open space and other key features near the rail alignment.

You can have your say by visiting our website airportrail.vic.gov.au to complete the interactive mapping exercise and the online survey.

You can also visit our virtual information session to learn more about the project.

Stay up to date about future opportunities to get involved by signing up to the Melbourne Airport Rail e-newsletter on the 'Contact Us' page of the website.



More information

To find out more about Melbourne Airport Rail:

airportrail.vic.gov.au

1800 105 105 (24 hours a day, 7 days a week)

Rail Projects Victoria
PO Box 4509, Melbourne, VIC 3001



Interpreter Service (03) 9209 0147

It should be noted that this information is current at the time of printing, however due to unforeseen circumstances, changes may occur. Please visit railprojects.vic.gov.au for the latest updates.