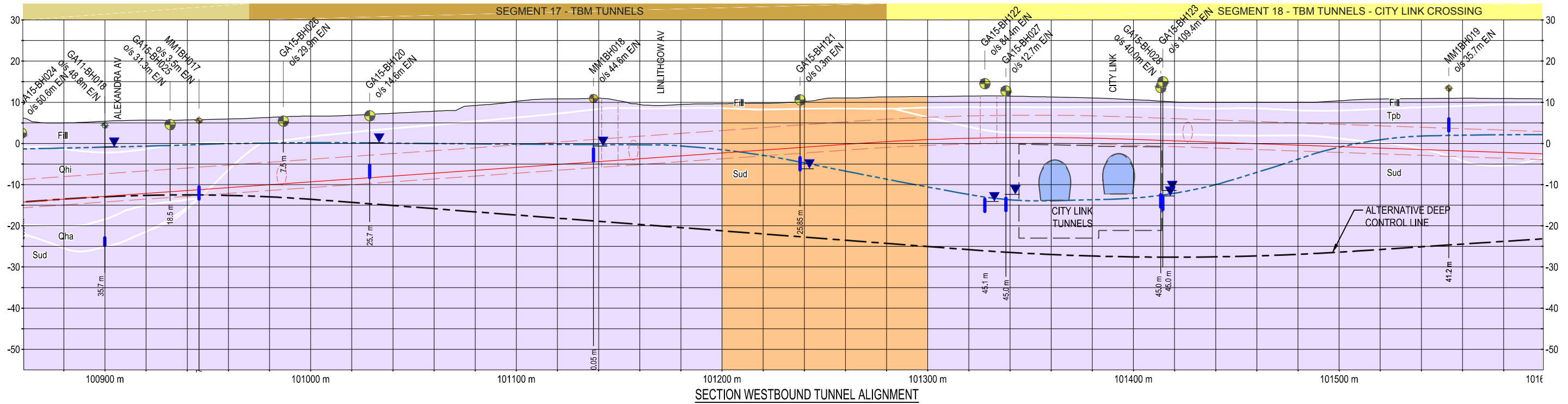


REFER TO SHEET 29 OF 35

REFER TO SHEET 31 OF 35



PLAN VIEW



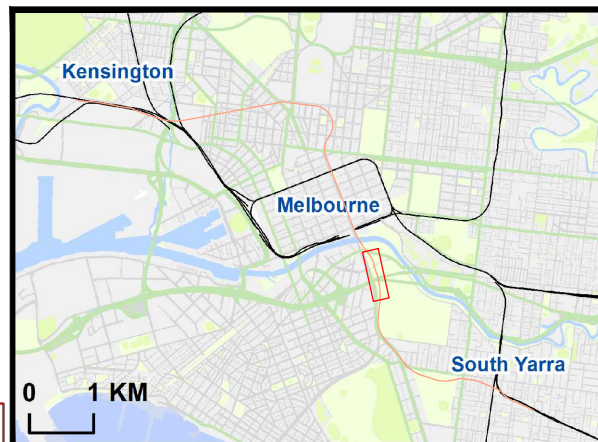
SECTION WESTBOUND TUNNEL ALIGNMENT

NOTES

1. REFER FIGURE MMR-AJM-PWAA-DR-NN-500450, SHEET 1 OF 35 FOR NOTES AND LEGEND.
2. ALL LEVELS ARE IN METRES TO AHD.
3. ALL COORDINATES ARE IN METRES TO MGA-Z55
4. INTERPRETED SUBSURFACE CONDITIONS SHOWN ON LONG SECTION TO BE USED FOR EES PURPOSES ONLY.

Note:  
Surface works are not shown

NOT FOR CONSTRUCTION

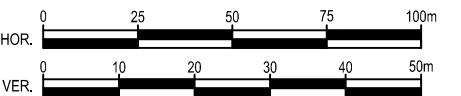


# Melbourne Metro Rail Project

Title: GEO. SECTION - RELIABILITY SHEET 30 OF 35

Drawing Number: MMR-AJM-PWAA-DR-NN-500450 Revision: P1.1

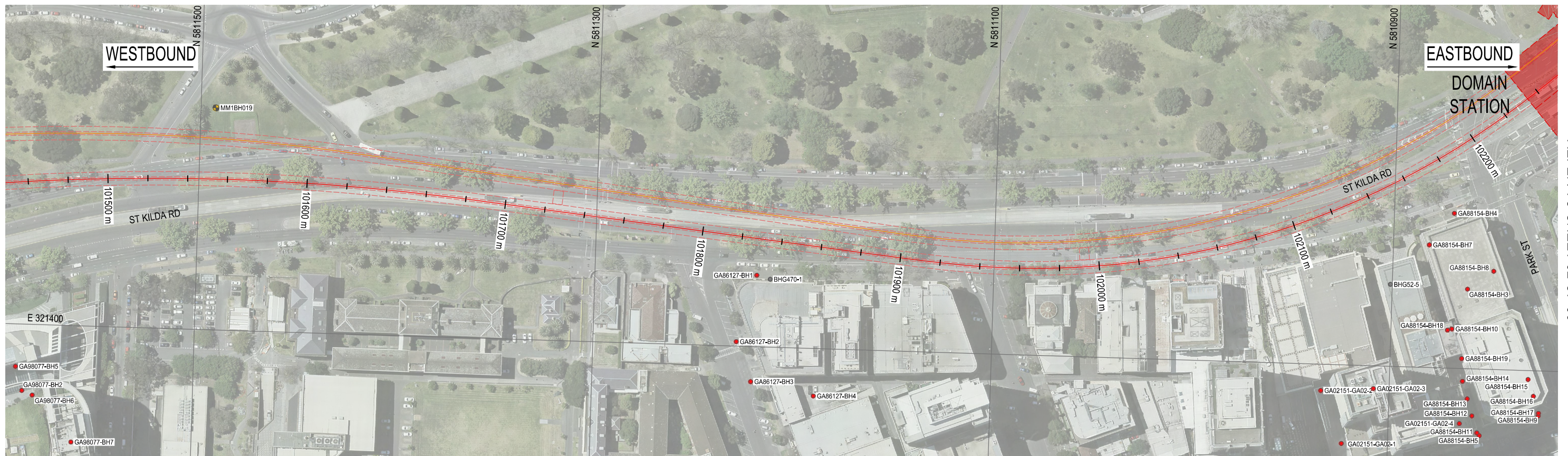
Drawn By: GOLDER Approved By: SLVB Date: 23-03-2016 Map Size: A3



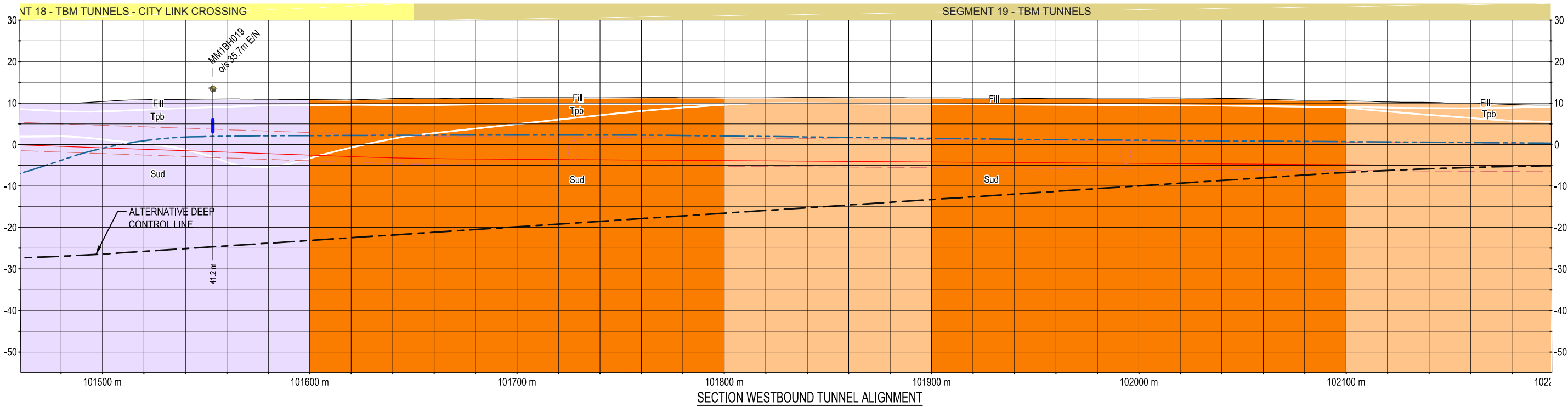


REFER TO SHEET 30 OF 35

REFER TO SHEET 32 OF 35



PLAN VIEW



SECTION WESTBOUND TUNNEL ALIGNMENT

NOTES

1. REFER FIGURE MMR-AJM-PWAA-DR-NN-500450, SHEET 1 OF 35 FOR NOTES AND LEGEND.
2. ALL LEVELS ARE IN METRES TO AHD.
3. ALL COORDINATES ARE IN METRES TO MGA-Z55
4. INTERPRETED SUBSURFACE CONDITIONS SHOWN ON LONG SECTION TO BE USED FOR EES PURPOSES ONLY.

Note:  
Surface works are not shown

NOT FOR CONSTRUCTION

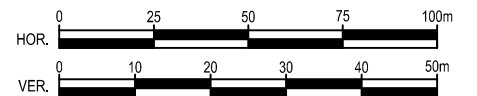


# Melbourne Metro Rail Project

Title: GEO. SECTION - RELIABILITY SHEET 31 OF 35

Drawing Number: MMR-AJM-PWAA-DR-NN-500450 Revision: P1.1

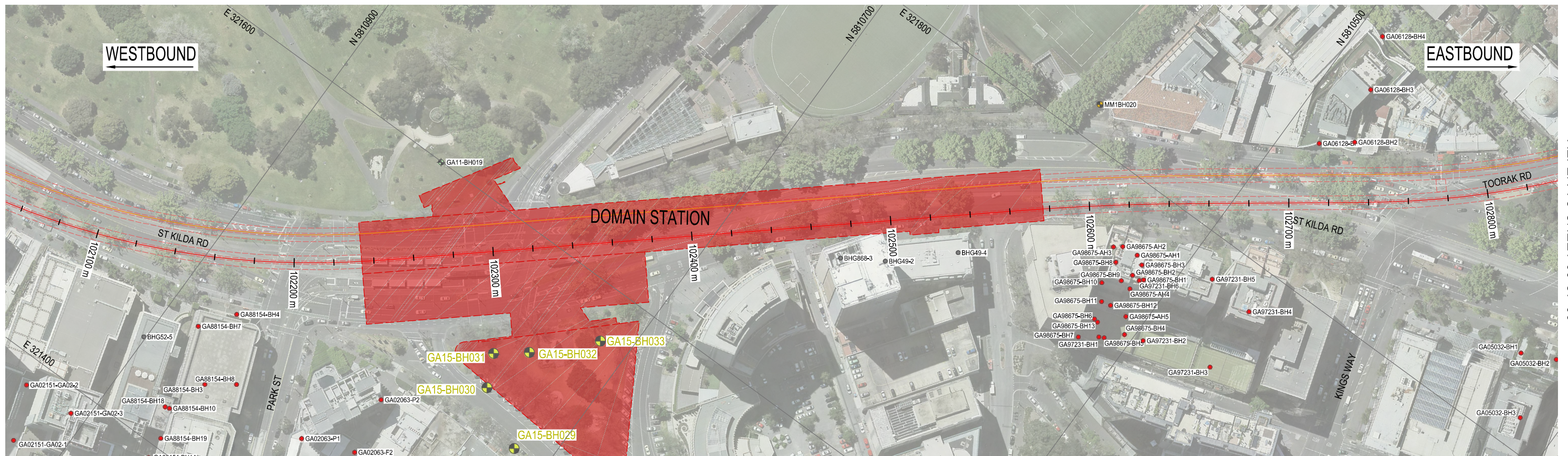
Drawn By: GOLDER Approved By: SLVB Date: 23-03-2016 Map Size: A3



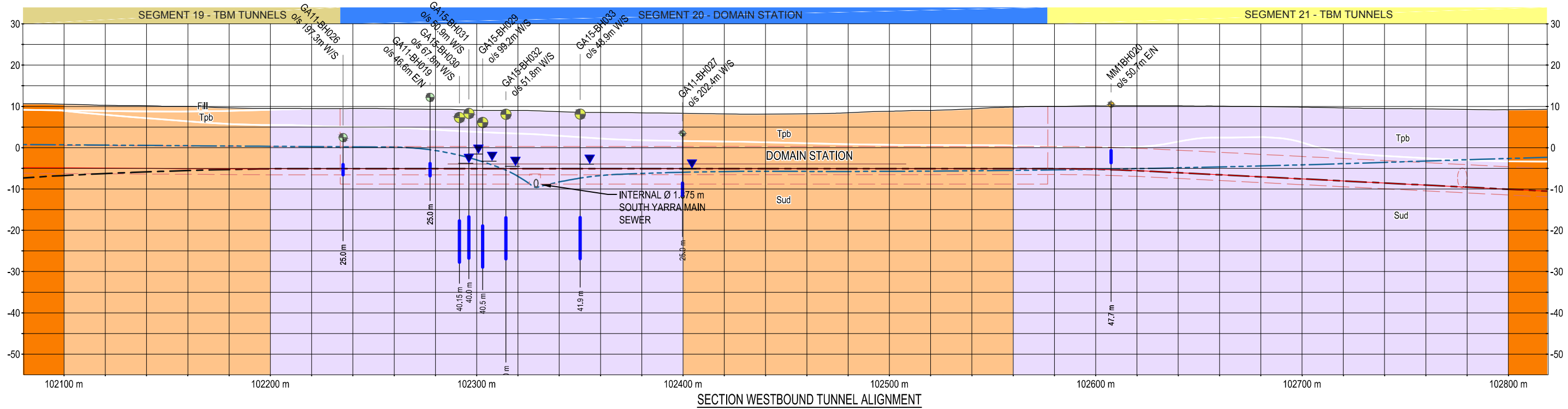


REFER TO SHEET 31 OF 35

REFER TO SHEET 33 OF 35



PLAN VIEW



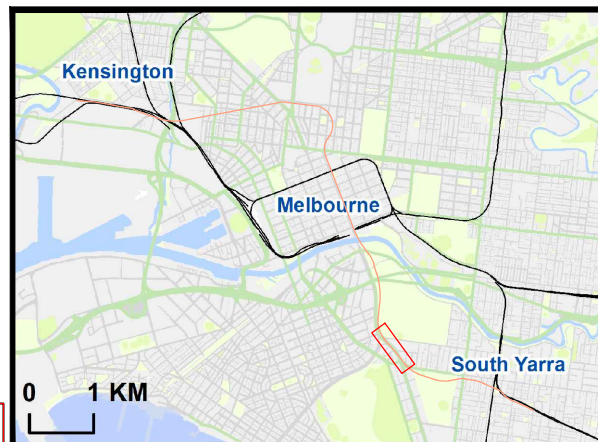
SECTION WESTBOUND TUNNEL ALIGNMENT

NOTES

1. REFER FIGURE MMR-AJM-PWAA-DR-NN-500450, SHEET 1 OF 35 FOR NOTES AND LEGEND.
2. ALL LEVELS ARE IN METRES TO AHD.
3. ALL COORDINATES ARE IN METRES TO MGA-Z55
4. INTERPRETED SUBSURFACE CONDITIONS SHOWN ON LONG SECTION TO BE USED FOR EES PURPOSES ONLY.

Note:  
Surface works are not shown

NOT FOR CONSTRUCTION

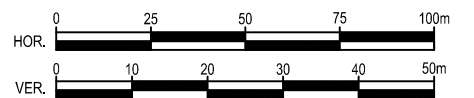


# Melbourne Metro Rail Project

Title: GEO. SECTION - RELIABILITY SHEET 32 OF 35

Drawing Number: MMR-AJM-PWAA-DR-NN-500450 Revision: P1.1

Drawn By: GOLDER Approved By: SLVB Date: 23-03-2016 Map Size: A3



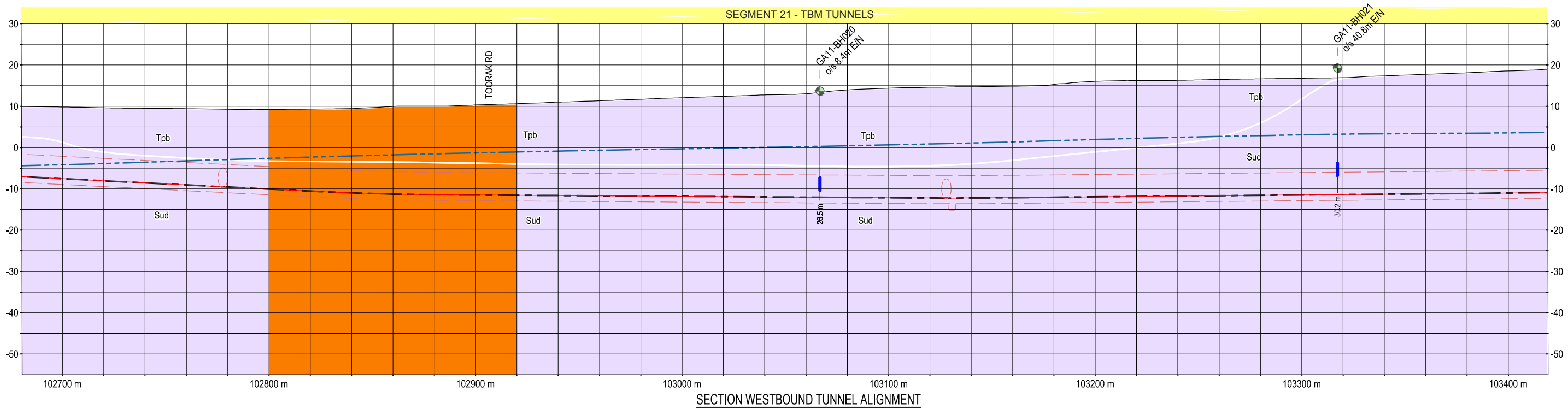


REFER TO SHEET 32 OF 35

REFER TO SHEET 34 OF 35



PLAN VIEW



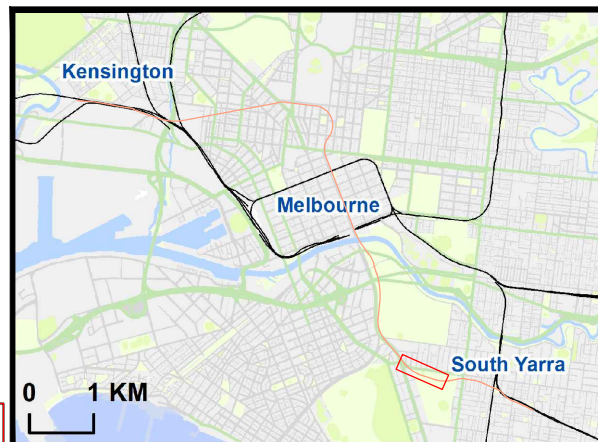
SECTION WESTBOUND TUNNEL ALIGNMENT

NOTES

1. REFER FIGURE MMR-AJM-PWAA-DR-NN-500450, SHEET 1 OF 35 FOR NOTES AND LEGEND.
2. ALL LEVELS ARE IN METRES TO AHD.
3. ALL COORDINATES ARE IN METRES TO MGA-Z55
4. INTERPRETED SUBSURFACE CONDITIONS SHOWN ON LONG SECTION TO BE USED FOR EES PURPOSES ONLY.

Note:  
Surface works are not shown

NOT FOR CONSTRUCTION

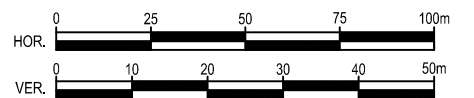


# Melbourne Metro Rail Project

Title: GEO. SECTION - RELIABILITY SHEET 33 OF 35

Drawing Number: MMR-AJM-PWAA-DR-NN-500450 Revision: P1.1

Drawn By: GOLDER Approved By: SLVB Date: 23-03-2016 Map Size: A3



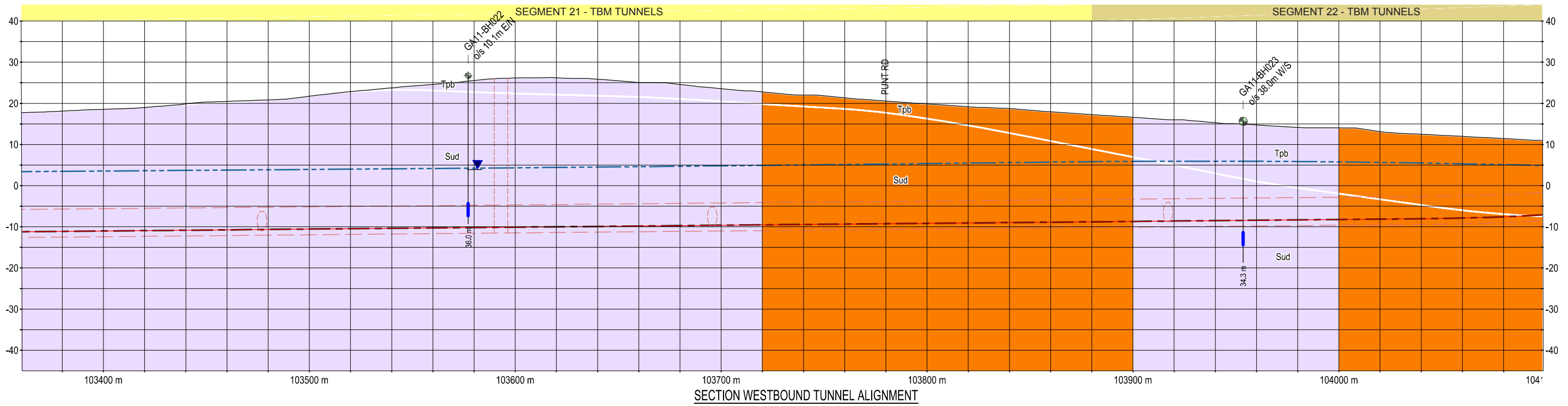


REFER TO SHEET 33 OF 35

REFER TO SHEET 35 OF 35



PLAN VIEW



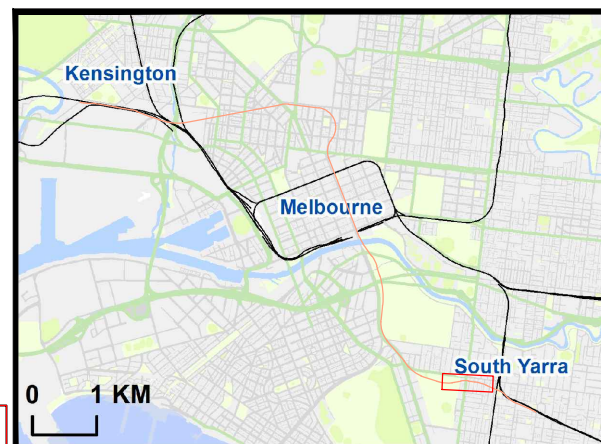
SECTION WESTBOUND TUNNEL ALIGNMENT

NOTES

1. REFER FIGURE MMR-AJM-PWAA-DR-NN-500450, SHEET 1 OF 35 FOR NOTES AND LEGEND.
2. ALL LEVELS ARE IN METRES TO AHD.
3. ALL COORDINATES ARE IN METRES TO MGA-Z55
4. INTERPRETED SUBSURFACE CONDITIONS SHOWN ON LONG SECTION TO BE USED FOR EES PURPOSES ONLY.

Note:  
Surface works are not shown

NOT FOR CONSTRUCTION



# Melbourne Metro Rail Project

Title: GEO. SECTION - RELIABILITY SHEET 34 OF 35

Drawing Number: MMR-AJM-PWAA-DR-NN-500450 Revision: P1.1

Drawn By: GOLDER Approved By: SLVB Date: 23-03-2016 Map Size: A3

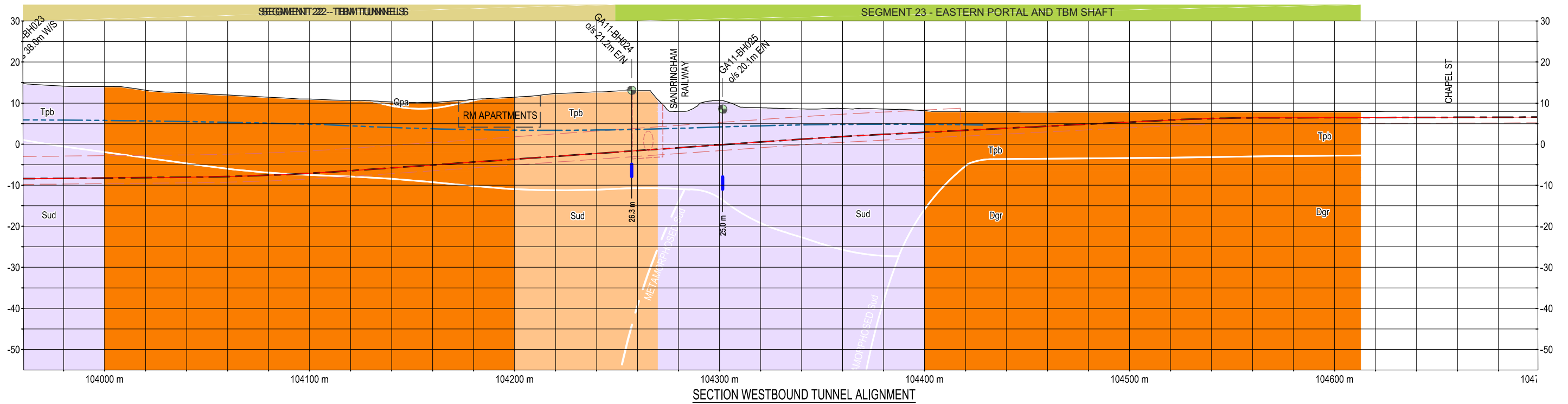




REFER TO SHEET 34 OF 35



PLAN VIEW



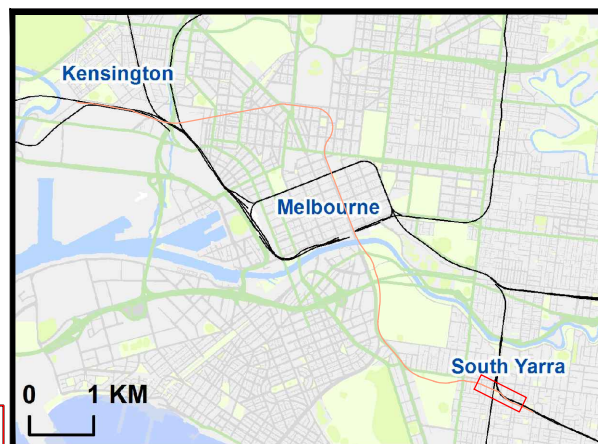
SECTION WESTBOUND TUNNEL ALIGNMENT

NOTES

1. REFER FIGURE MMR-AJM-PWAA-DR-NN-500450, SHEET 1 OF 35 FOR NOTES AND LEGEND.
2. ALL LEVELS ARE IN METRES TO AHD.
3. ALL COORDINATES ARE IN METRES TO MGA-Z55
4. INTERPRETED SUBSURFACE CONDITIONS SHOWN ON LONG SECTION TO BE USED FOR EES PURPOSES ONLY.

Note:  
Surface works are not shown

NOT FOR CONSTRUCTION

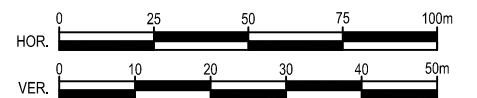


# Melbourne Metro Rail Project

Title: GEO. SECTION - RELIABILITY SHEET 35 OF 35

Drawing Number: MMR-AJM-PWAA-DR-NN-500450 Revision: P1.1

Drawn By: GOLDER Approved By: SLVB Date: 23-03-2016 Map Size: A3





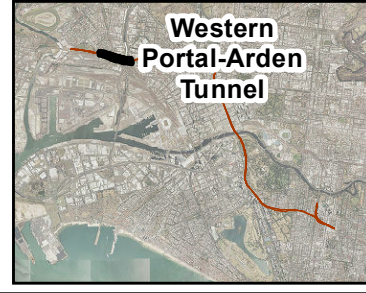






**LEGEND**

- Historic MMRP Borehole
- Reference Design Phase Borehole
- Groundwater Well Installed
- ASS/PASS Borehole
- MIP Borehole
- Alignment



**MAP INFORMATION**  
 The information and data contained in this map is for Melbourne Metro Rail Project, and is for information purposes only. It is to be used for reference only and may not be suitable for any other purpose including design. The information may not be accurate, current or otherwise reliable.

**NOTES**

1. Aerial imagery sourced from Public Transport Victoria, image resolution 10cm and date of capture February 2015.
2. Road information sourced from Victorian Government Data Directory 2015.
3. Rail alignment sourced from AJM JV, revision P2.3 dated 28-10-2015.

**CLIENT**  
 AJM JOINT VENTURE

**PROJECT**  
 MELBOURNE METRO RAIL PROJECT

**REFERENCE SCALE:** 1:5,000 (at A3)  
**PROJECTION:** GDA 1994 MGA Zone 55

**TITLE**  
 ENVIRONMENTAL SAMPLE LOCATIONS  
 WESTERN PORTAL-ARDEN TUNNEL

**CONSULTANT**  
 Golder Associates

YYYY-MM-DD	2016-04-07
PREPARED	JPH
DESIGN	-
REVIEW	CJW
APPROVED	CJW

**PROJECT No.** 1525532    **CONTROL** 217-T    **Rev.** 2    **FIGURE** 2 - A2

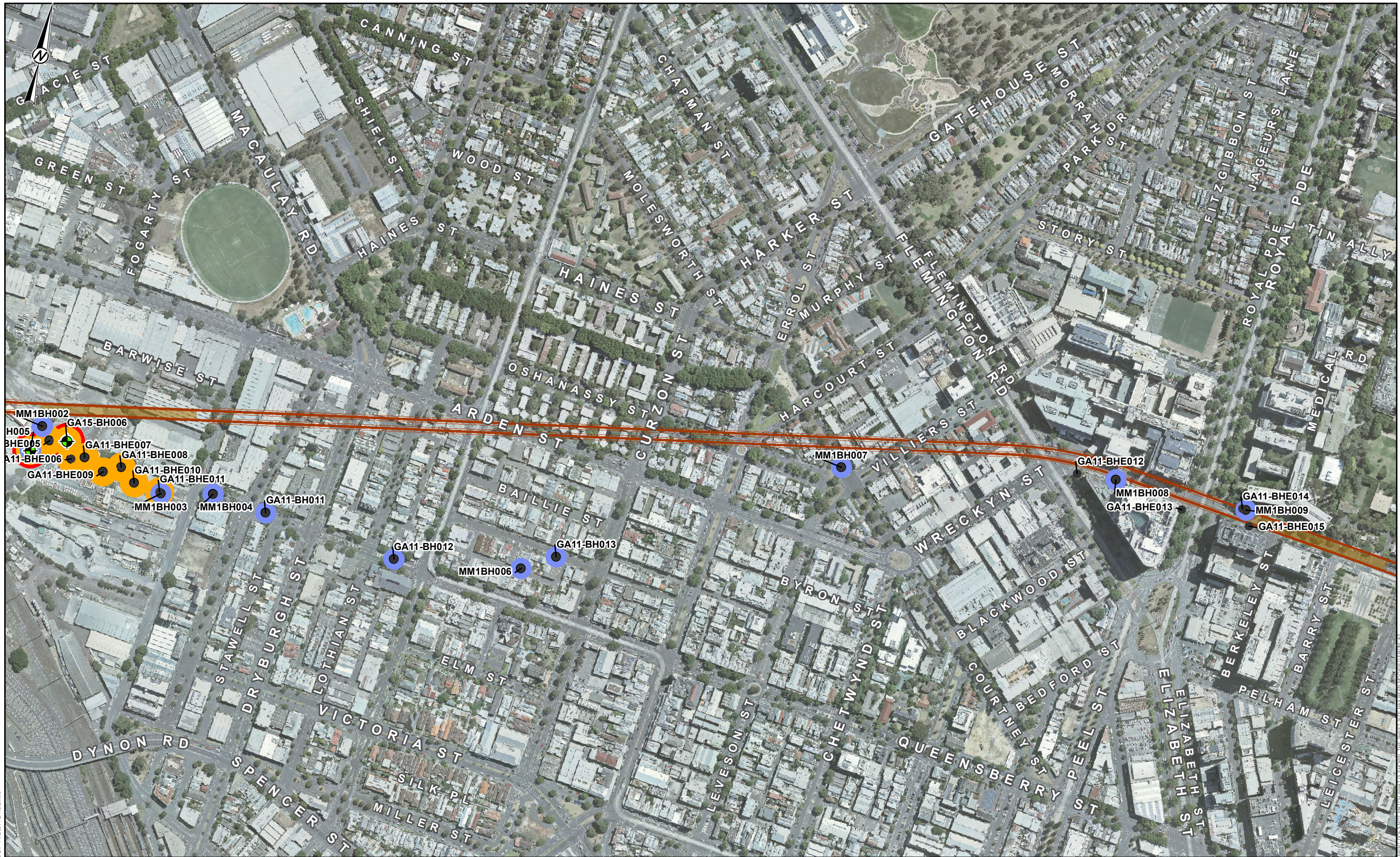
Path: S:\OTPI\Melbourne Rail\info\Project\Deliverables\1525532\_217\_TF002A\_2\_Rev2.mxd

© 2016 GOLDER ASSOCIATES. ALL RIGHTS RESERVED. THIS DOCUMENT IS UNCLASSIFIED. THE SHEET TITLE HAS BEEN INDICATED IN THE TITLE BLOCK.









**LEGEND**

- Historic MMRP Borehole
- Reference Design Phase Borehole
- Groundwater Well Installed
- ASS/PASS Borehole
- MIP Borehole
- Alignment



**MAP INFORMATION**  
 The information and data contained in this map is for Melbourne Metro Rail Project, and is for information purposes only. It is to be used for reference only and may not be suitable for any other purpose including design. The information may not be accurate, current or otherwise reliable.

**NOTES**

- Aerial imagery sourced from Public Transport Victoria, image resolution 10cm and date of capture February 2015.
- Road information sourced from Victorian Government Data Directory 2015.
- Rail alignment sourced from AJM JV, revision P2.3 dated 28-10-2015.

**CLIENT**  
 AJM JOINT VENTURE

**PROJECT**  
 MELBOURNE METRO RAIL PROJECT

**REFERENCE SCALE:** 1:5,000 (at A3)  
**PROJECTION:** GDA 1994 MGA Zone 55

**TITLE**  
 ENVIRONMENTAL SAMPLE LOCATIONS  
 ARDEN-PARKVILLE TUNNEL

**CONSULTANT**

YYYY-MM-DD	2016-04-07
PREPARED	JPH
DESIGN	-
REVIEW	CJW
APPROVED	CJW

**PROJECT No.** 1525532    **CONTROL** 217-T    **Rev.** 2

**FIGURE** 4 - A2

Path: S:\OTPI\Map\Borehole\1525532-217-T\AEM01-A2-Rev2.mxd

25mm © 2016 GOLDER ASSOCIATES. ALL RIGHTS RESERVED. THE SPIDER LOGO HAS BEEN INDENTIFIED PROTECTED.