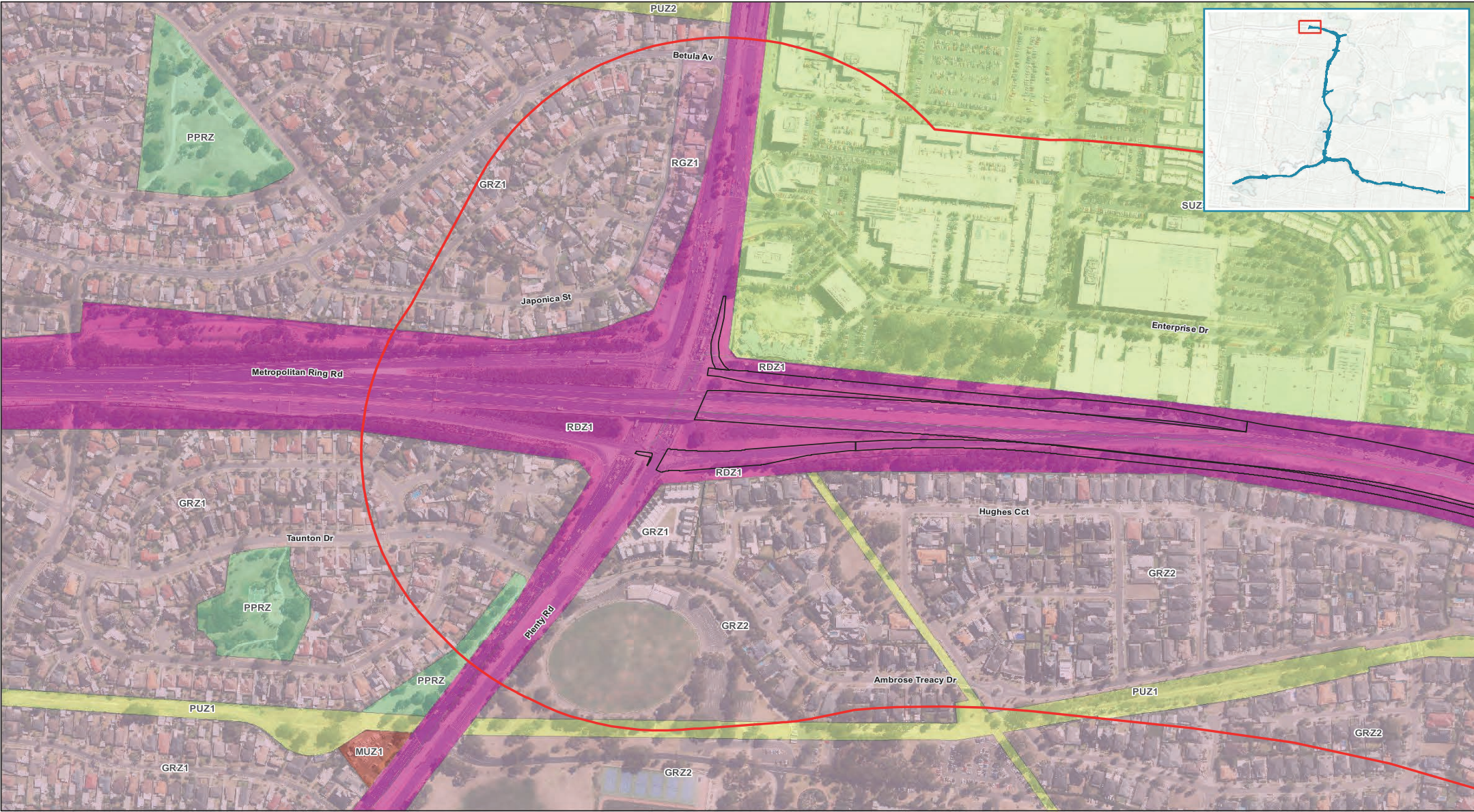
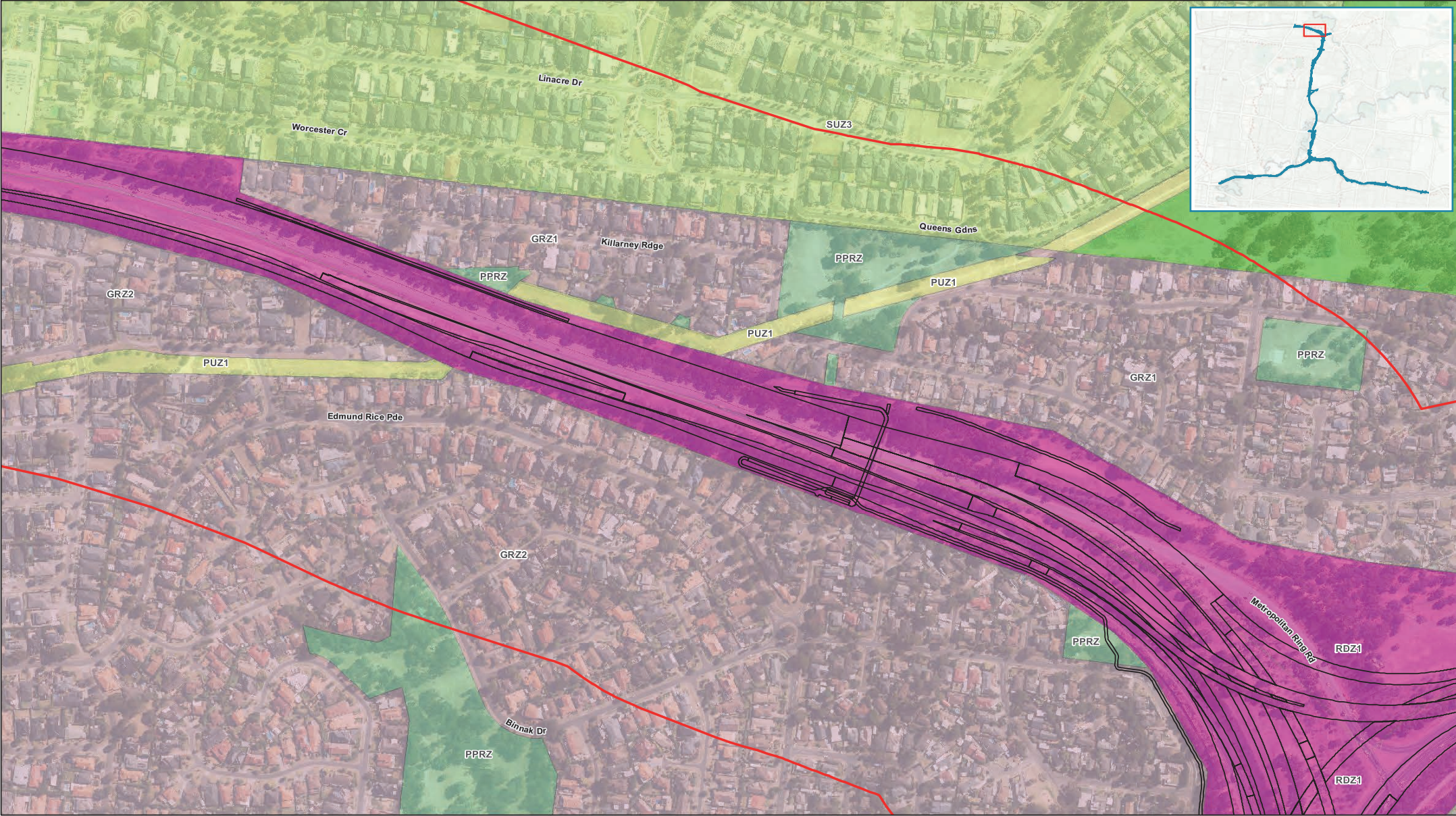


Appendix B – Zone and overlay mapping





Paper Size A3
0 50 100 150
Meters
Map Projection: Transverse Mercator
Horizontal Datum: GDA 1994
Grid: GDA 1994 MGA Zone 55



Legend

Planning zone

- General Residential
- Neighbourhood Residential

- Public Conservation & Resource
- Public Park and Recreation
- Public Use

- Road - Category 1
- Special Use
- EES Base Case Design

Land Use Planning Precincts

- M80 to Northern Portal

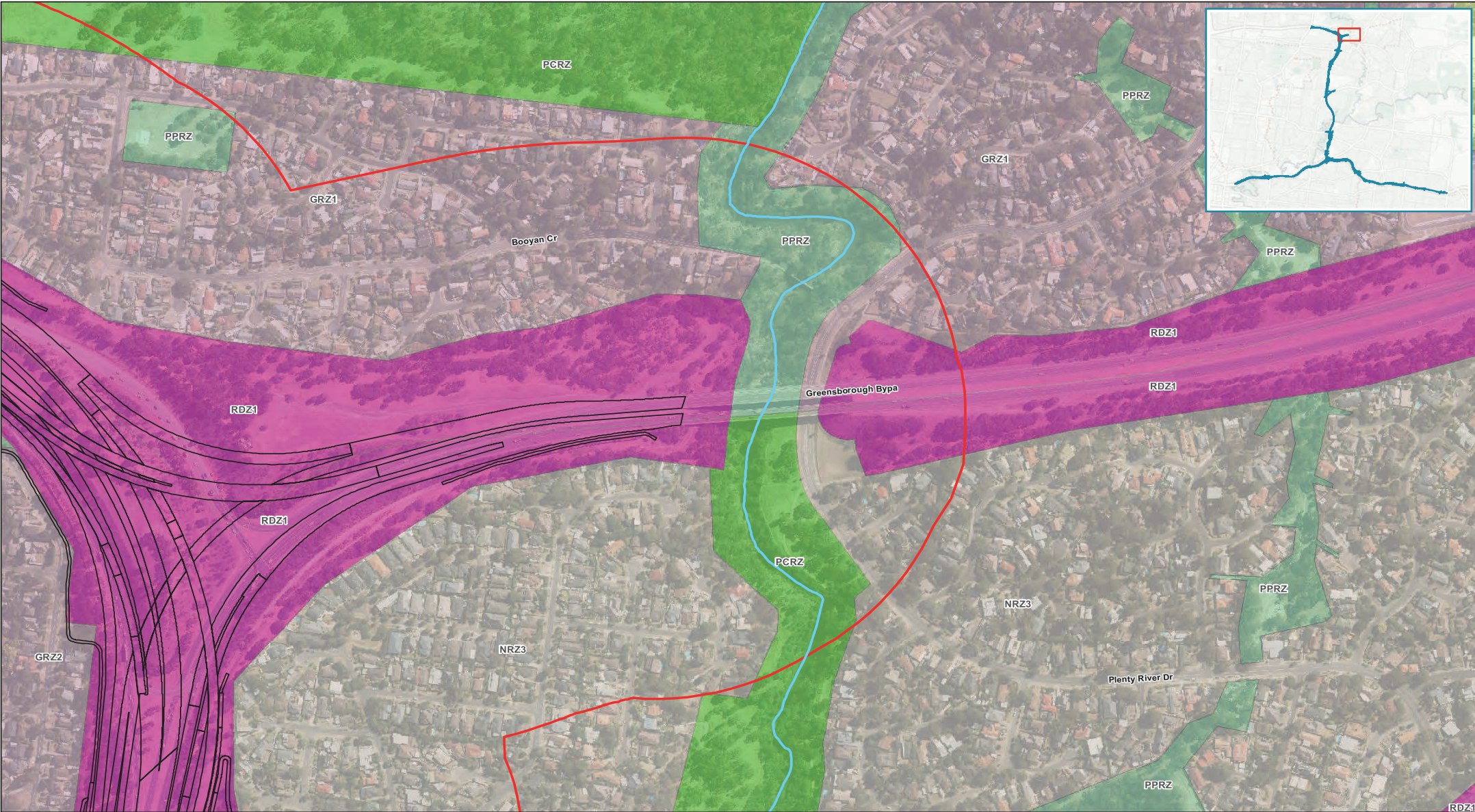


North East Link Project

Job Number
Revision
Date

31-35006
K
22 Nov 2018
Page 2 of 24

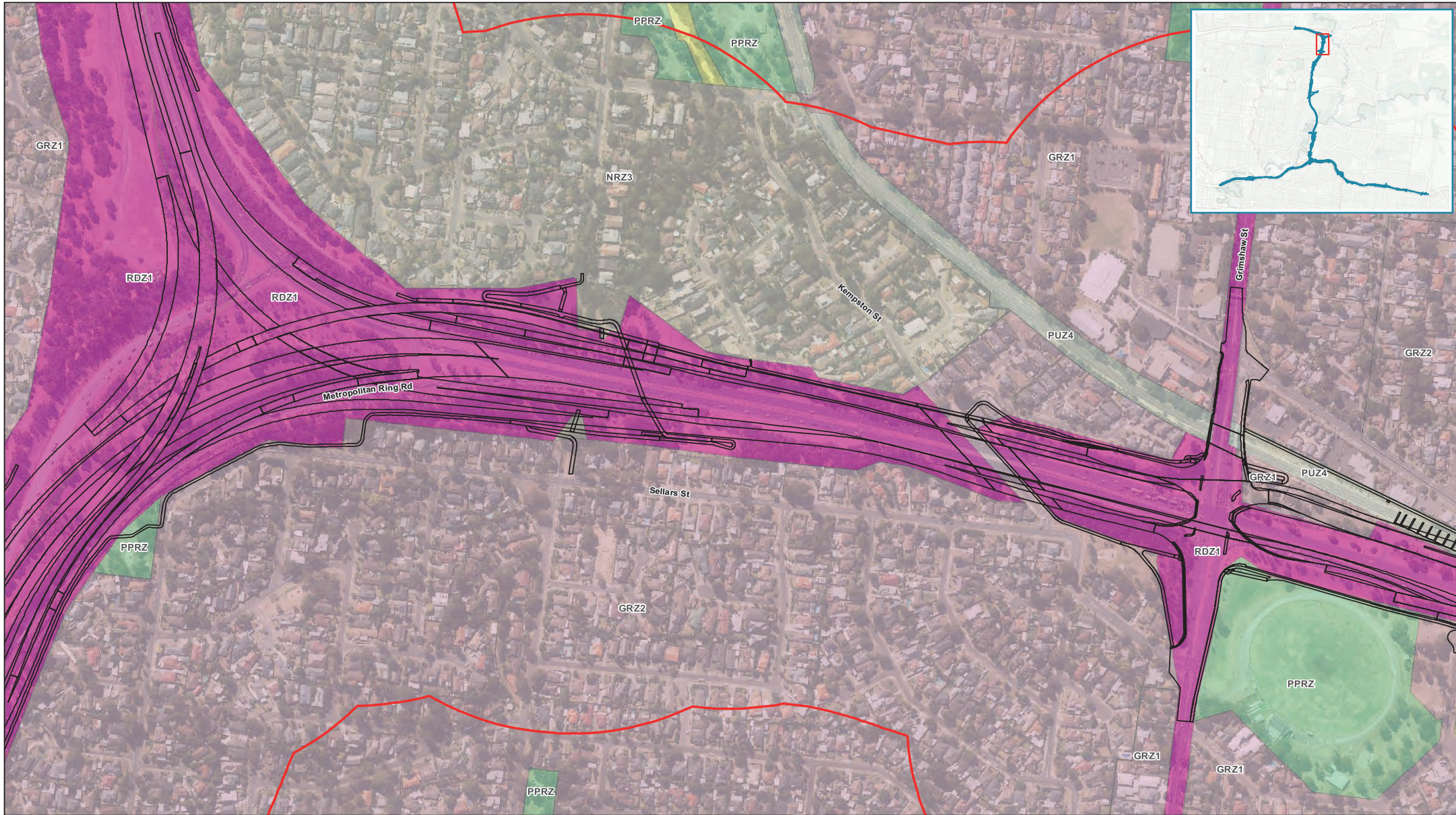
Land Use Planning - Zones: M80 to Northern Portal



G:\3135006\GIS\Maps\Working\Specialist Submission\EES\Planning\Land_Use_Planning\3135006_LandUsePlanning_Zones_A31_RevK.mxd

© 2018. Whilst every care has been taken to prepare this map, GHD (and DATA CUSTODIAN) make no representations or warranties about its accuracy, reliability, completeness or suitability for any particular purpose and cannot accept liability and responsibility of any kind (whether in contract, tort or otherwise) for any expenses, losses, damages and/or costs (including indirect or consequential damage) which are or may be incurred by any party as a result of the map being inaccurate, incomplete or unsuitable in any way and for any reason.

Data source: CIP Imagery - DELWP - 2018 | Roads, LGA, Planning Zones, Vicmap, 2018. Created by: trighetti



Paper Size A3
0 50 100 150
Meters
Map Projection: Transverse Mercator
Horizontal Datum: GDA 1994
Grid: GDA 1994 MGA Zone 55



Legend

Planning zone

- General Residential
- Neighbourhood Residential

- Public Park and Recreation
- Public Use
- Public use - Transport

- Road - Category 1
- EES Base Case Design

Land Use Planning Precincts

- M80 to Northern Portal



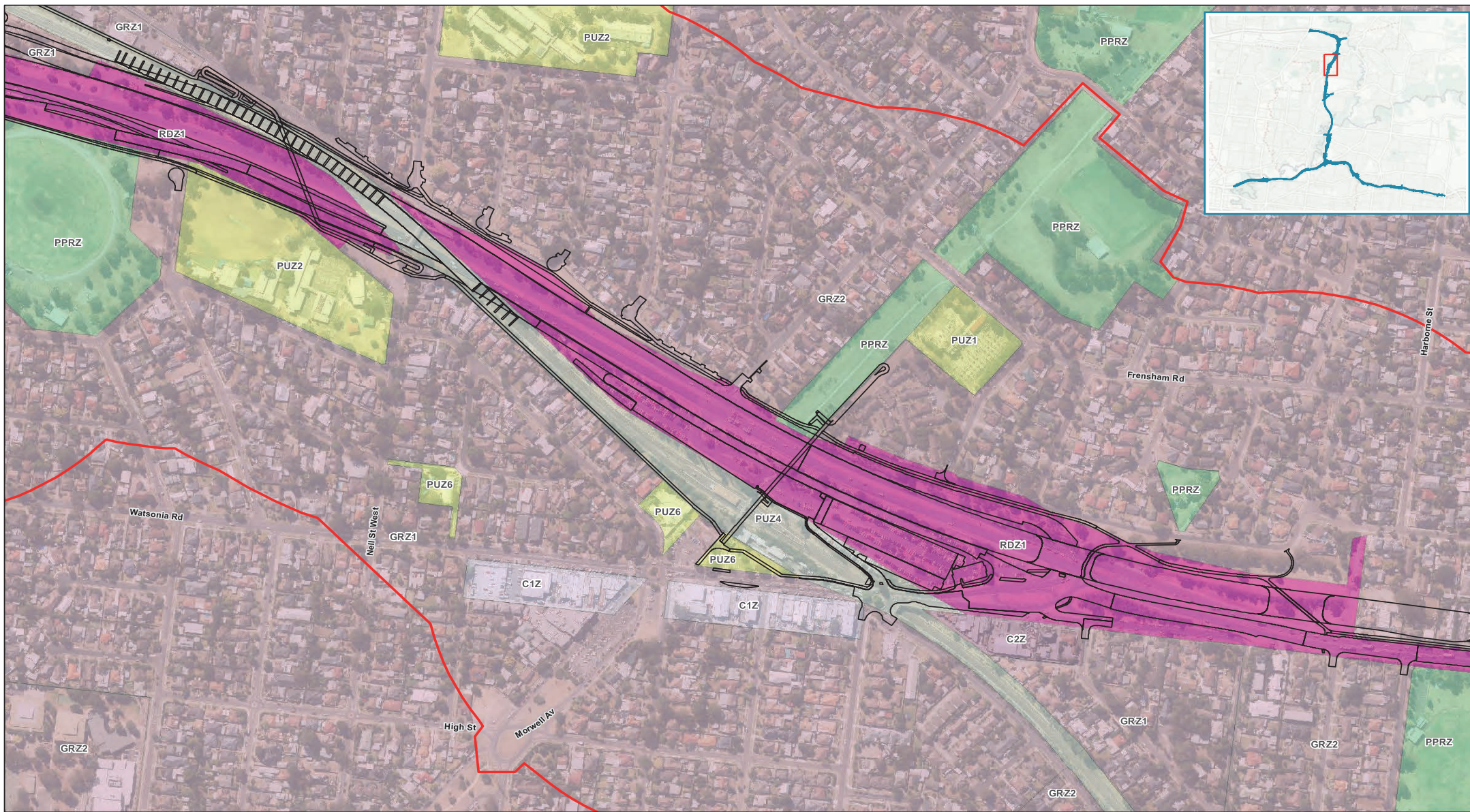
North East Link Project	Job Number	31-35006
	Revision	K
	Date	22 Nov 2018
		Page 4 of 24

Land Use Planning - Zones: M80 to Northern Portal

G:\3135006\GIS\Maps\Working\Specialist\Submission\EES\Planning\Land_Use_Planning\3135006_LandUsePlanning_Zones_A31_RevK.mxd

© 2018. Whilst every care has been taken to prepare this map, GHD (and DATA CUSTODIAN) make no representations or warranties about its accuracy, reliability, completeness or suitability for any particular purpose and cannot accept liability and responsibility of any kind (whether in contract, tort or otherwise) for any expenses, losses, damages and/or costs (including indirect or consequential damage) which are or may be incurred by any party as a result of the map being inaccurate, incomplete or unsuitable in any way and for any reason.
Data source: CIP Imagery - DELWP - 2018 | Roads, LGA, Planning Zones, Vicmap, 2018. Created by: inghett

180 Lonsdale Street Melbourne VIC 3000 Australia T 61 3 8687 8000 F 61 3 8687 8111 E mel@mail@ghd.com W www.ghd.com



Paper Size A3
0 50 100 150
Meters
Map Projection: Transverse Mercator
Horizontal Datum: GDA 1994
Grid: GDA 1994 MGA Zone 55



Legend

Planning zone
Commercial 1
Commercial 2
General Residential

Public Park and Recreation
Public Use
Public use - Transport

Road - Category 1
EES Base Case Design

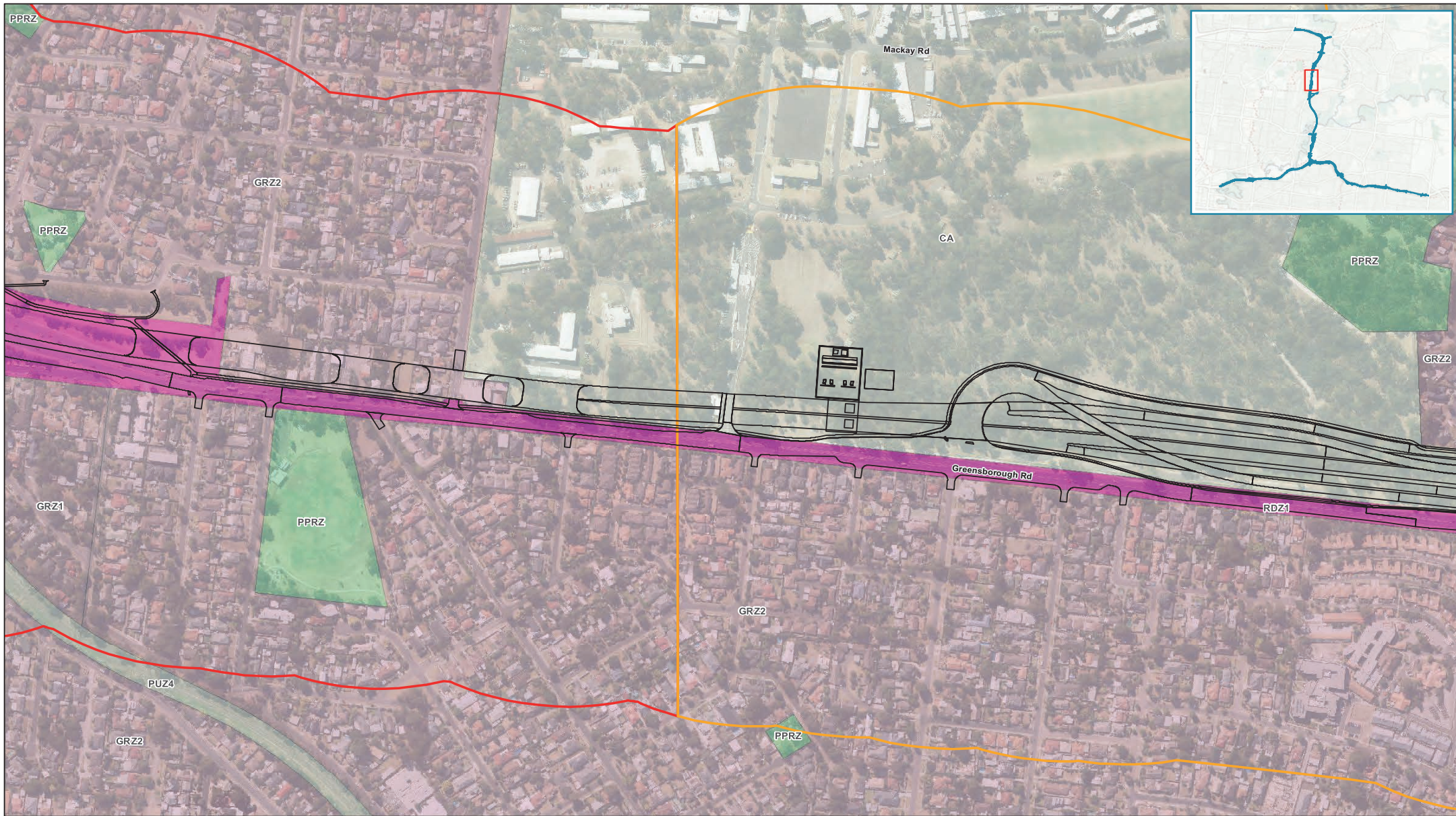
Land Use Planning Precincts
M80 to Northern Portal



North East Link Project	Job Number	31-35006
	Revision	K
	Date	22 Nov 2018
		Page 5 of 24

Land Use Planning - Zones: M80 to Northern Portal

G:\3135006\GIS\Maps\Working\Specialist Submission\EES\Planning\Land_Use_Planning\3135006_LandUsePlanning_Zones_A31_RevK.mxd
© 2018. Whilst every care has been taken to prepare this map, GHD (and DATA CUSTODIAN) make no representations or warranties about its accuracy, reliability, completeness or suitability for any particular purpose and cannot accept liability and responsibility of any kind (whether in contract, tort or otherwise) for any expenses, losses, damages and/or costs (including indirect or consequential damage) which are or may be incurred by any party as a result of the map being inaccurate, incomplete or unsuitable in any way and for any reason.
Data source: CIP Imagery - DELWP - 2018 | Roads, LGA, Planning Zones, Vicmap, 2018. Created by: trighetti



Paper Size A3
0 50 100 150
Meters
Map Projection: Transverse Mercator
Horizontal Datum: GDA 1994
Grid: GDA 1994 MGA Zone 55



Legend

Planning zone

- Commonwealth Land
- General Residential

- Neighbourhood Residential
- Public Park and Recreation

- Public use - Transport
- Road - Category 1
- Road - Category 2

- EES Base Case Design
- Land Use Planning Precincts
- M80 to Northern Portal

- Northern Portal to Southern Portal



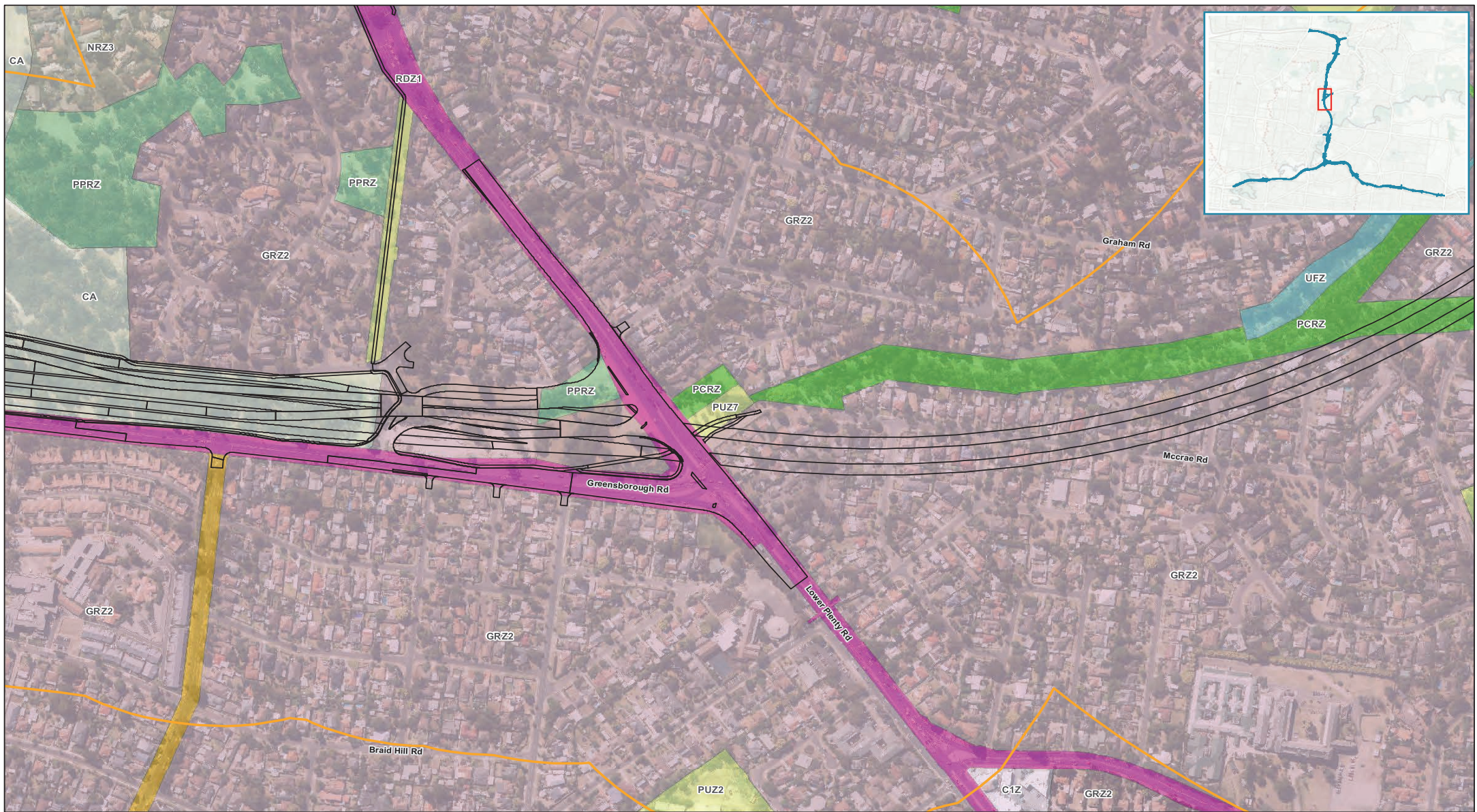
North East Link Project
Job Number 31-35006
Revision K
Date 22 Nov 2018
Page 6 of 24

Land Use Planning - Zones: M80 to Northern Portal

G:\3135006\GIS\Maps\Working\Specialist Submission\EES\Planning\Land_Use_Planning\3135006_LandUsePlanning_Zones_A3_RevK.mxd

© 2018. Whilst every care has been taken to prepare this map, GHD (and DATA CUSTODIAN) make no representations or warranties about its accuracy, reliability, completeness or suitability for any particular purpose and cannot accept liability and responsibility of any kind (whether in contract, tort or otherwise) for any expenses, losses, damages and/or costs (including indirect or consequential damage) which are or may be incurred by any party as a result of the map being inaccurate, incomplete or unsuitable in any way and for any reason.
Data source: CIP Imagery - DELWP - 2018 | Roads, LGA, Planning Zones, Vicmap, 2018. Created by: trighett

180 Lonsdale Street Melbourne VIC 3000 Australia T 61 3 8687 8000 F 61 3 8687 8111 E mel@mail@ghd.com W www.ghd.com



Paper Size A3
0 50 100 150
Meters
Map Projection: Transverse Mercator
Horizontal Datum: GDA 1994
Grid: GDA 1994 MGA Zone 55



Legend

Planning zone

- Commercial 1
- Commonwealth Land

- General Residential
- Neighbourhood Residential
- Public Conservation & Resource
- Public Park and Recreation
- Public Use

- Road - Category 1
- Road - Category 2
- Urban Flood
- EES Base Case Design

Land Use Planning Precincts

- Northern Portal to Southern Portal



North East Link Project	Job Number	31-35006
	Revision	K
	Date	22 Nov 2018
		Page 7 of 24

Land Use Planning - Zones: Northern Portal to Southern Portal



Paper Size A3
0 50 100 150
Meters
Map Projection: Transverse Mercator
Horizontal Datum: GDA 1994
Grid: GDA 1994 MGA Zone 55



Legend

Planning zone

- General Residential
- Neighbourhood Residential

- Public Conservation & Resource
- Public Park and Recreation
- Public Use

- Special Use
- Urban Flood
- EES Base Case Design

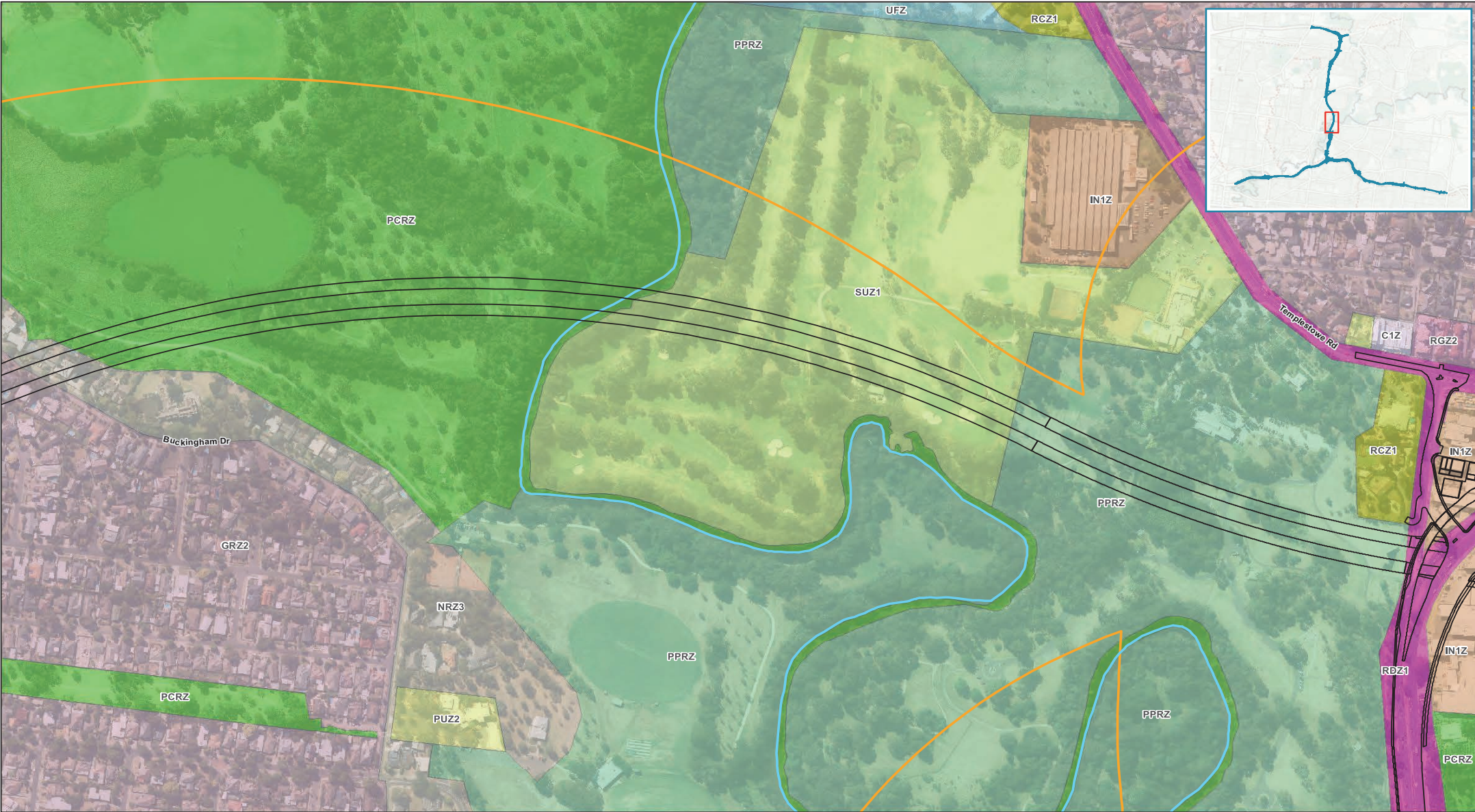
Land Use Planning Precincts

- Northern Portal to Southern Portal



North East Link Project
Job Number: 31-35006
Revision: K
Date: 22 Nov 2018
Page 8 of 24

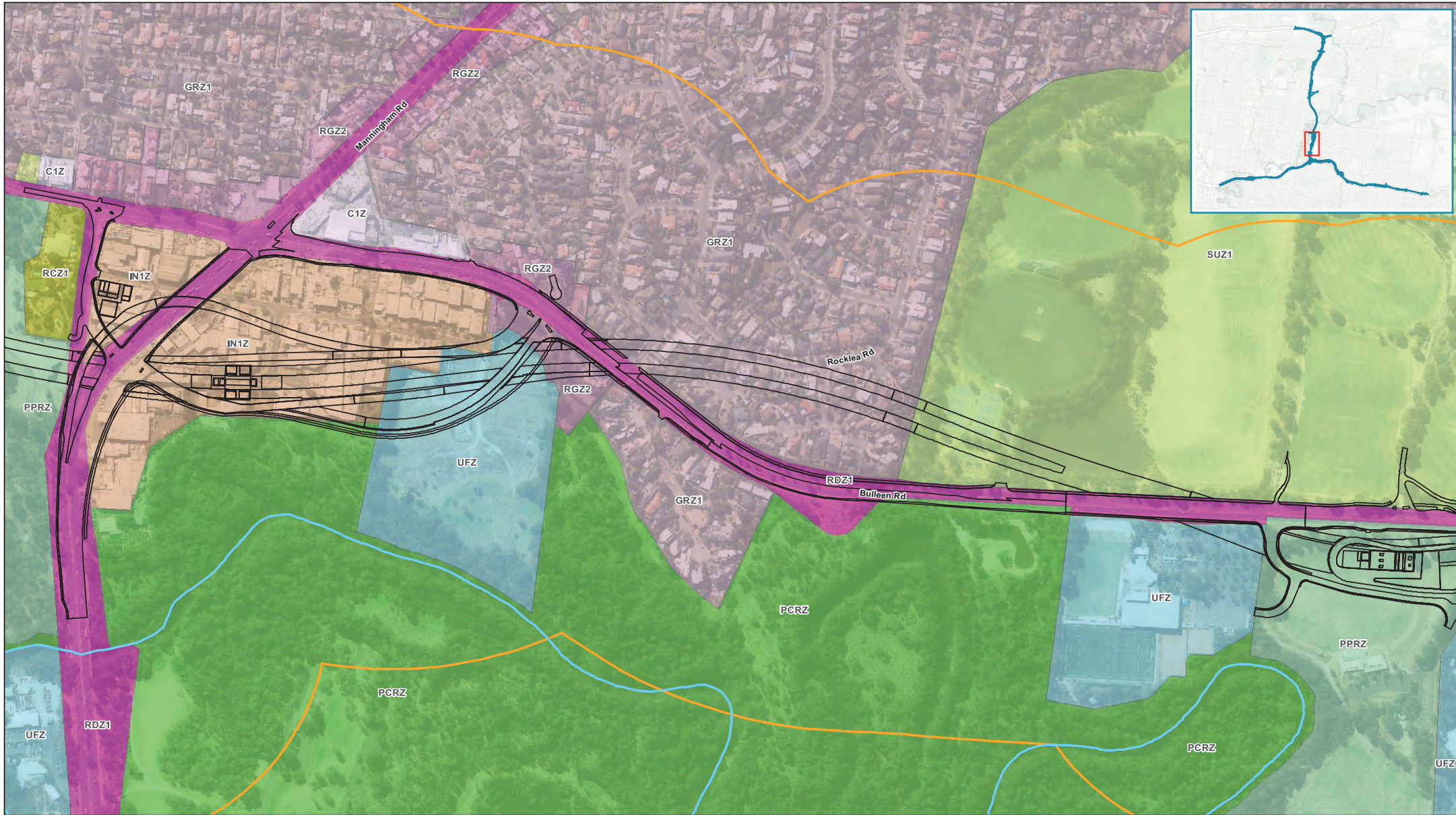
Land Use Planning - Zones: Northern Portal to Southern Portal



G:\3135006\GIS\Maps\Working\Specialist Submission\EES\Planning\Land_Use_Planning\3135006_LandUsePlanning_Zones_A31_RevK.mxd

© 2018. Whilst every care has been taken to prepare this map, GHD (and DATA CUSTODIAN) make no representations or warranties about its accuracy, reliability, completeness or suitability for any particular purpose and cannot accept liability and responsibility of any kind (whether in contract, tort or otherwise) for any expenses, losses, damages and/or costs (including indirect or consequential damage) which are or may be incurred by any party as a result of the map being inaccurate, incomplete or unsuitable in any way and for any reason.

Data source: CIP Imagery - DELWP - 2018 | Roads, LGA, Planning Zones, Vicmap, 2018. Created by: trighetti



Paper Size A3
0 50 100 150
Meters
Map Projection: Transverse Mercator
Horizontal Datum: GDA 1994
Grid: GDA 1994 MGA Zone 55



Legend

Planning zone

- Commercial 1
- General Residential
- Industrial 1

- Public Conservation & Resource
- Public Park and Recreation
- Public Use

- Rural Conservation
- Road - Category 1
- Residential Growth
- Special Use

- Urban Flood
- EES Base Case Design

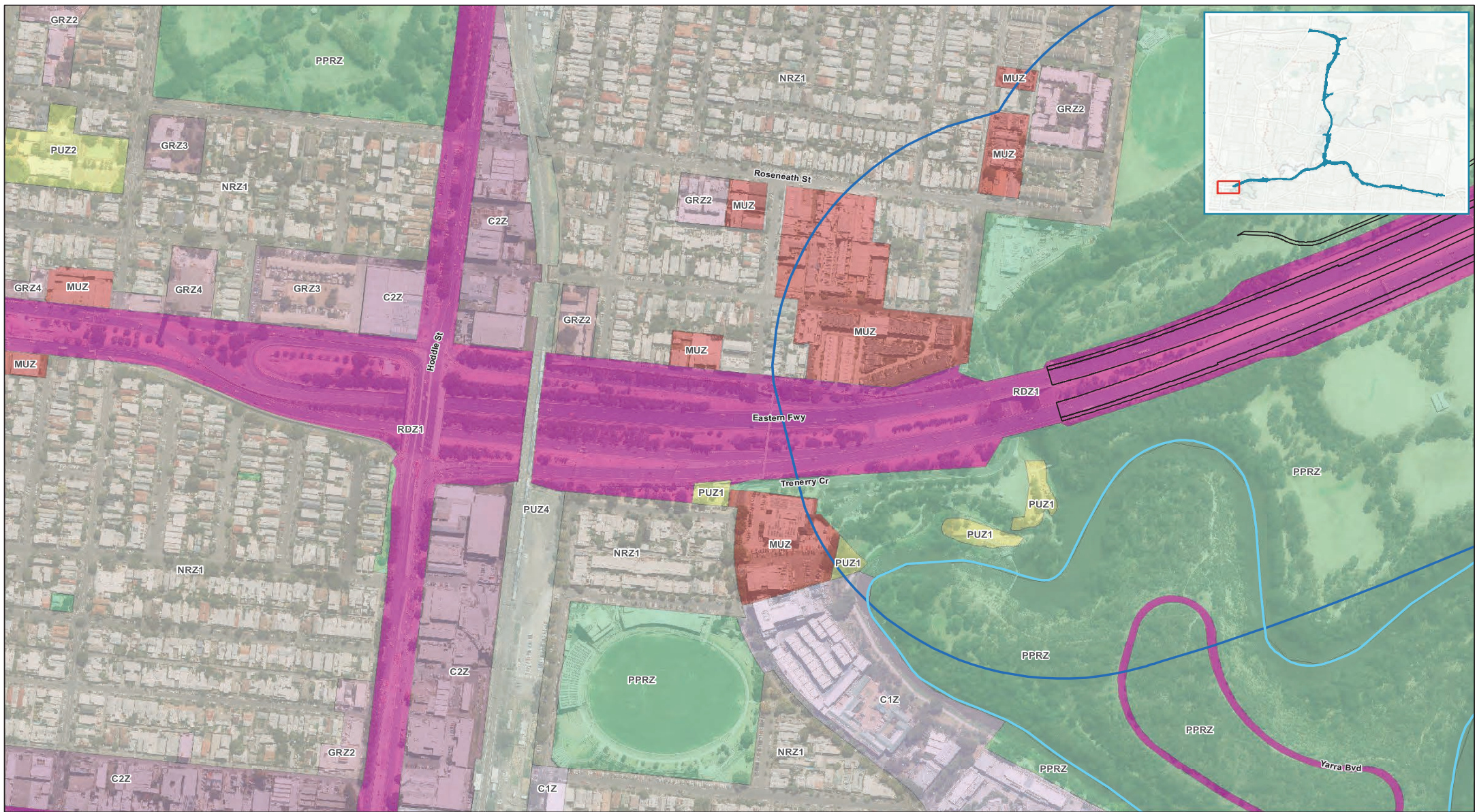
Land Use Planning Precincts

- Northern Portal to Southern Portal



North East Link Project
Job Number: 31-35006
Revision: K
Date: 22 Nov 2018
Page 10 of 24

Land Use Planning - Zones: Northern Portal to Southern Portal



Paper Size A3
0 50 100 150
Meters
Map Projection: Transverse Mercator
Horizontal Datum: GDA 1994
Grid: GDA 1994 MGA Zone 55



Legend

Planning zone

- Commercial 1
- Commercial 2
- General Residential

- Mixed Use
- Neighbourhood Residential
- Public Park and Recreation

- Public Use
- Public use - Transport
- Road - Category 1

- EES Base Case Design
- Land Use Planning Precincts
- Eastern Freeway



North East Link Project
Job Number: 31-35006
Revision: K
Date: 22 Nov 2018
Page 11 of 24

Land Use Planning - Zones: Eastern Freeway



Paper Size A3
0 50 100 150
Meters
Map Projection: Transverse Mercator
Horizontal Datum: GDA 1994
Grid: GDA 1994 MGA Zone 55



Legend

Planning zone

- General Residential
- Neighbourhood Residential

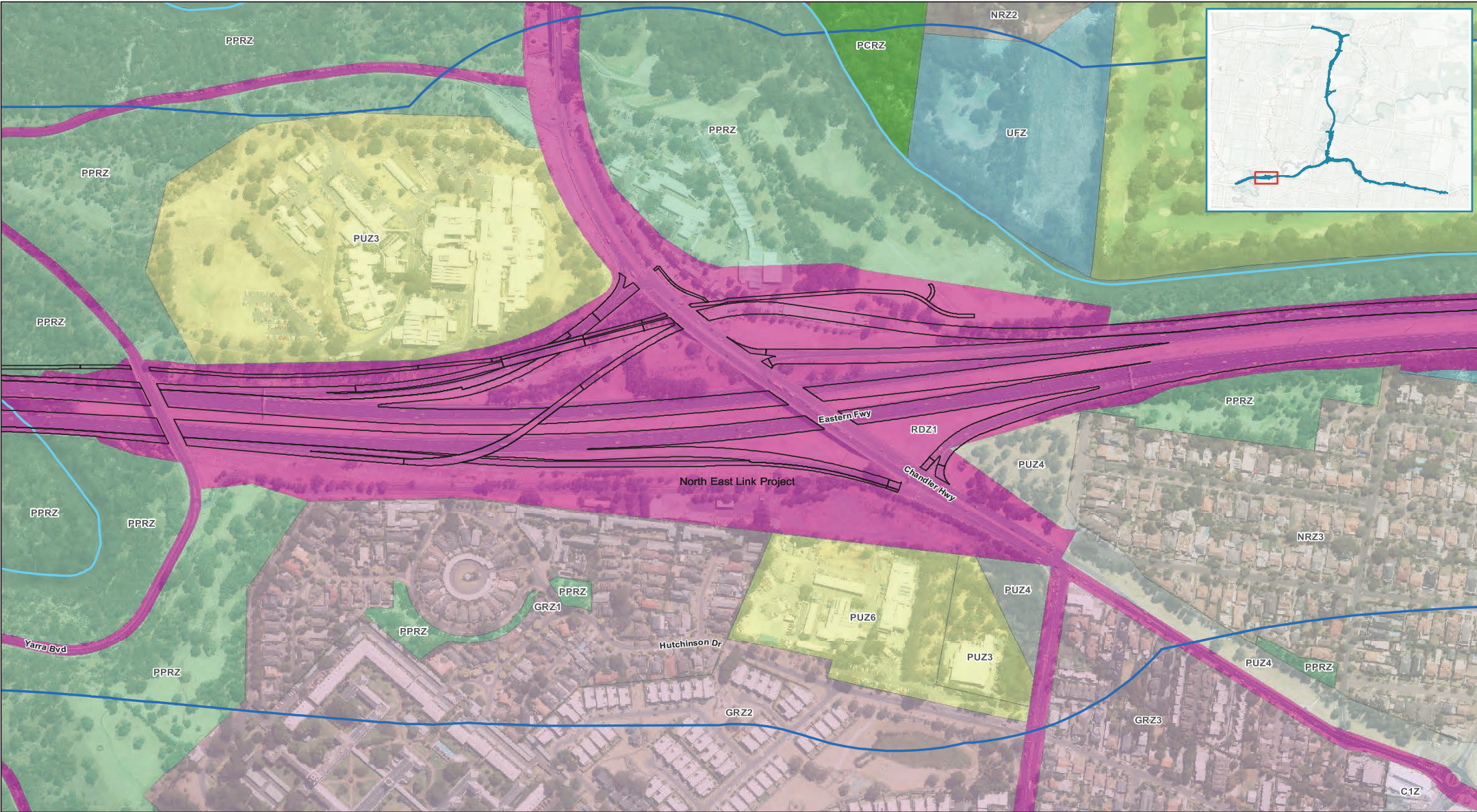
- Public Park and Recreation
- Public Use
- Road – Category 1

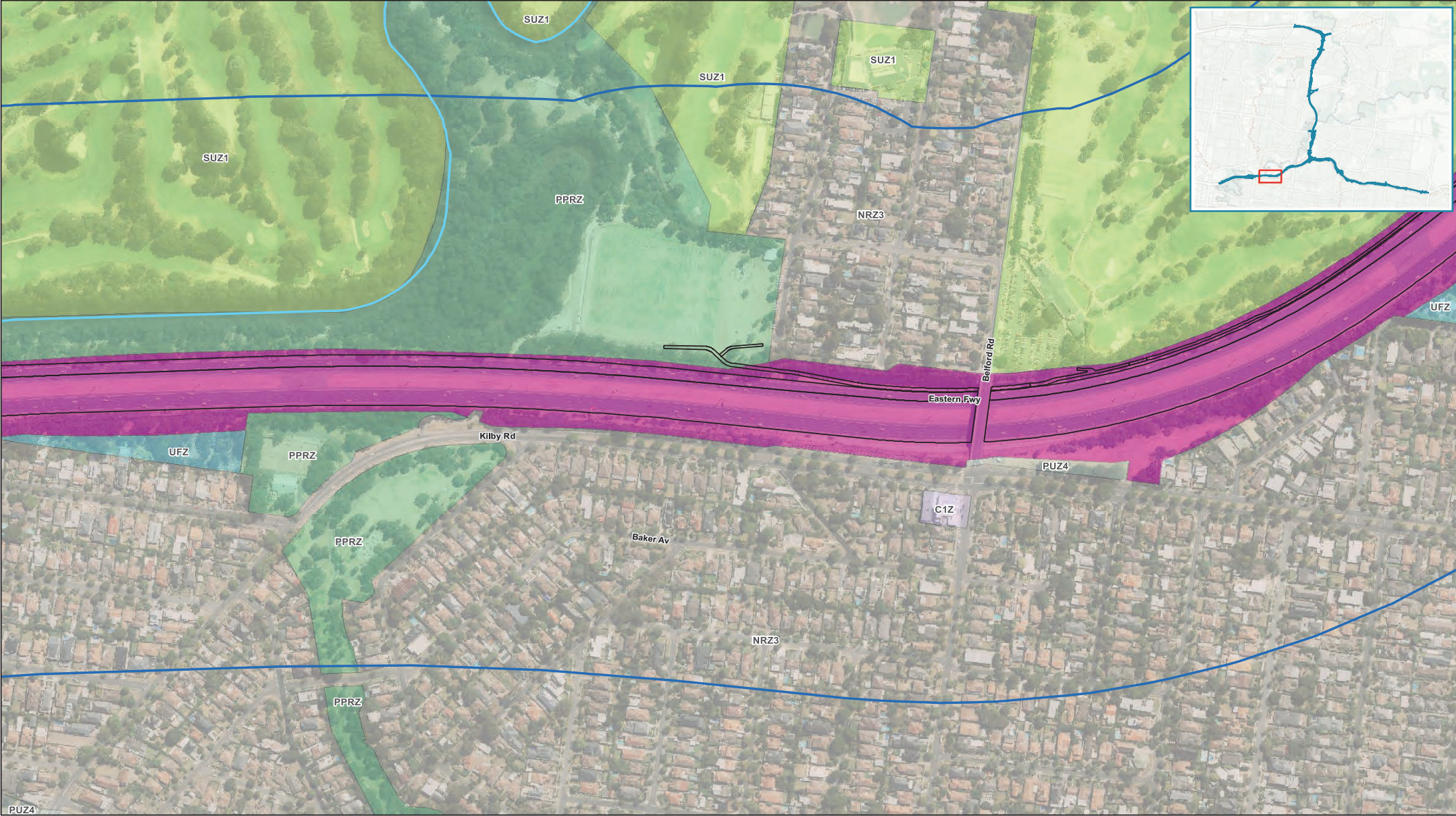
- EES Base Case Design
- Land Use Planning Precincts
- Eastern Freeway



North East Link Project	Job Number	31-35006
	Revision	K
	Date	22 Nov 2018
		Page 12 of 24

**Land Use Planning - Zones:
Eastern Freeway**





Paper Size A3
0 50 100 150
Meters
Map Projection: Transverse Mercator
Horizontal Datum: GDA 1994
Grid: GDA 1994 MGA Zone 55



Legend

Planning zone

- Commercial 1
- Neighbourhood Residential

- Public Park and Recreation
- Public use - Transport
- Road - Category 1

- Special Use
- Urban Flood
- EES Base Case Design

Land Use Planning Precincts

- Eastern Freeway

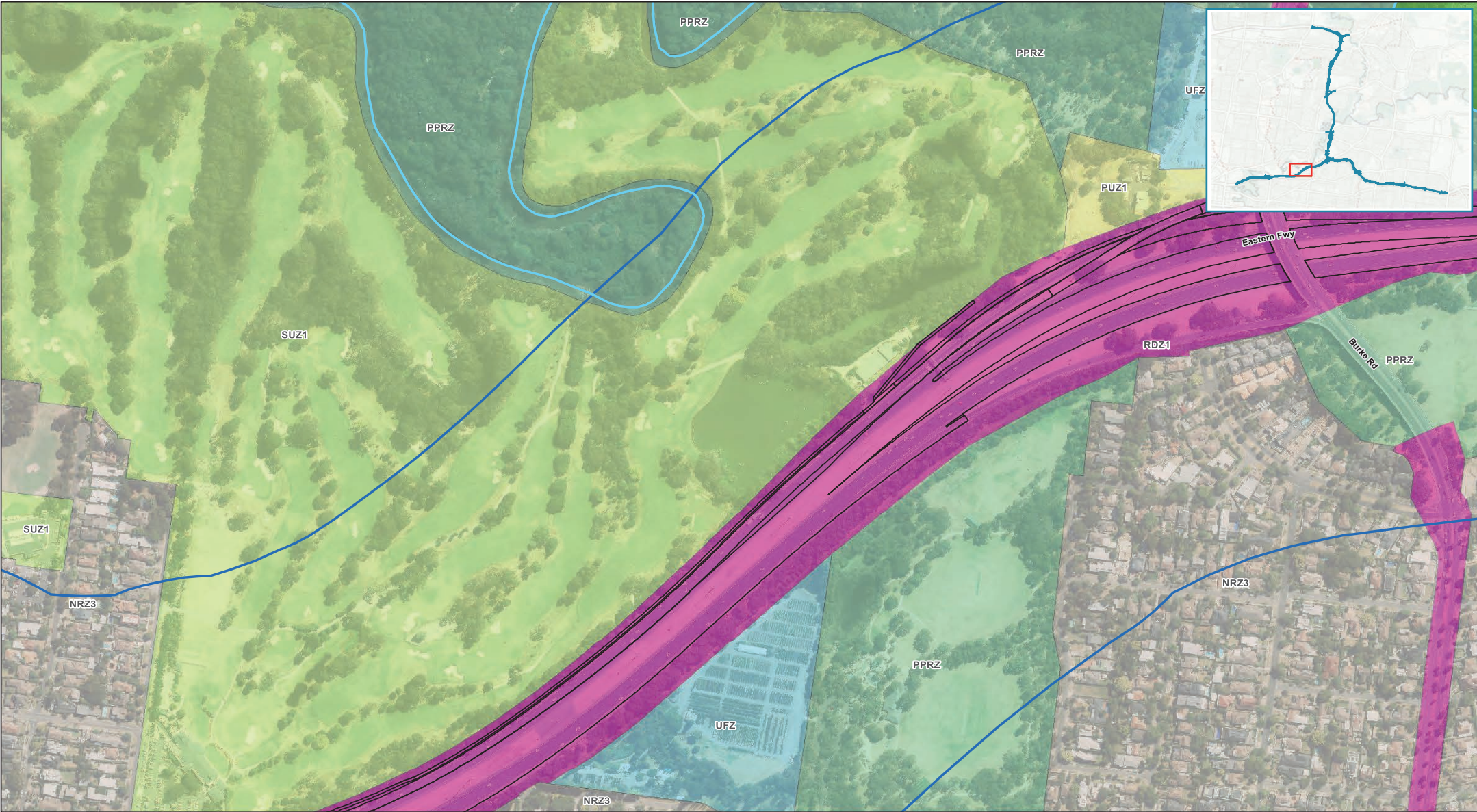


North East Link Project	Job Number	31-35006
	Revision	K
	Date	22 Nov 2018
		Page 14 of 24

Land Use Planning - Zones: Eastern Freeway

G:\3135006\GIS\Maps\Working\Specialist Submission\EES\Planning\Land_Use_Planning\3135006_LandUsePlanning_Zones_A31_RevK.mxd

© 2018. Whilst every care has been taken to prepare this map, GHD (and DATA CUSTODIAN) make no representations or warranties about its accuracy, reliability, completeness or suitability for any particular purpose and cannot accept liability and responsibility of any kind (whether in contract, tort or otherwise) for any expenses, losses, damages and/or costs (including indirect or consequential damage) which are or may be incurred by any party as a result of the map being inaccurate, incomplete or unsuitable in any way and for any reason.
Data source: CIP Imagery - DELWP - 2018 | Roads, LGA, Planning Zones, Vicmap, 2018. Created by trighetti



G:\3135006\GIS\Working\Specialist Submission\EES\Planning\Land_Use_Planning\3135006_LandUsePlanning_Zones_A31_RevK.mxd

© 2018. Whilst every care has been taken to prepare this map, GHD (and DATA CUSTODIAN) make no representations or warranties about its accuracy, reliability, completeness or suitability for any particular purpose and cannot accept liability and responsibility of any kind (whether in contract, tort or otherwise) for any expenses, losses, damages and/or costs (including indirect or consequential damage) which are or may be incurred by any party as a result of the map being inaccurate, incomplete or unsuitable in any way and for any reason.

Data source: CIP Imagery - DELWP - 2018 | Roads, LGA, Planning Zones, Vicmap, 2018. Created by: trighetti



Paper Size A3
0 50 100 150
Meters
Map Projection: Transverse Mercator
Horizontal Datum: GDA 1994
Grid: GDA 1994 MGA Zone 55



Legend

Planning zone

- Commercial 1
- Neighbourhood Residential

- Public Conservation & Resource
- Public Park and Recreation
- Public Use

- Road - Category 1
- Urban Flood
- EES Base Case Design

Land Use Planning Precincts

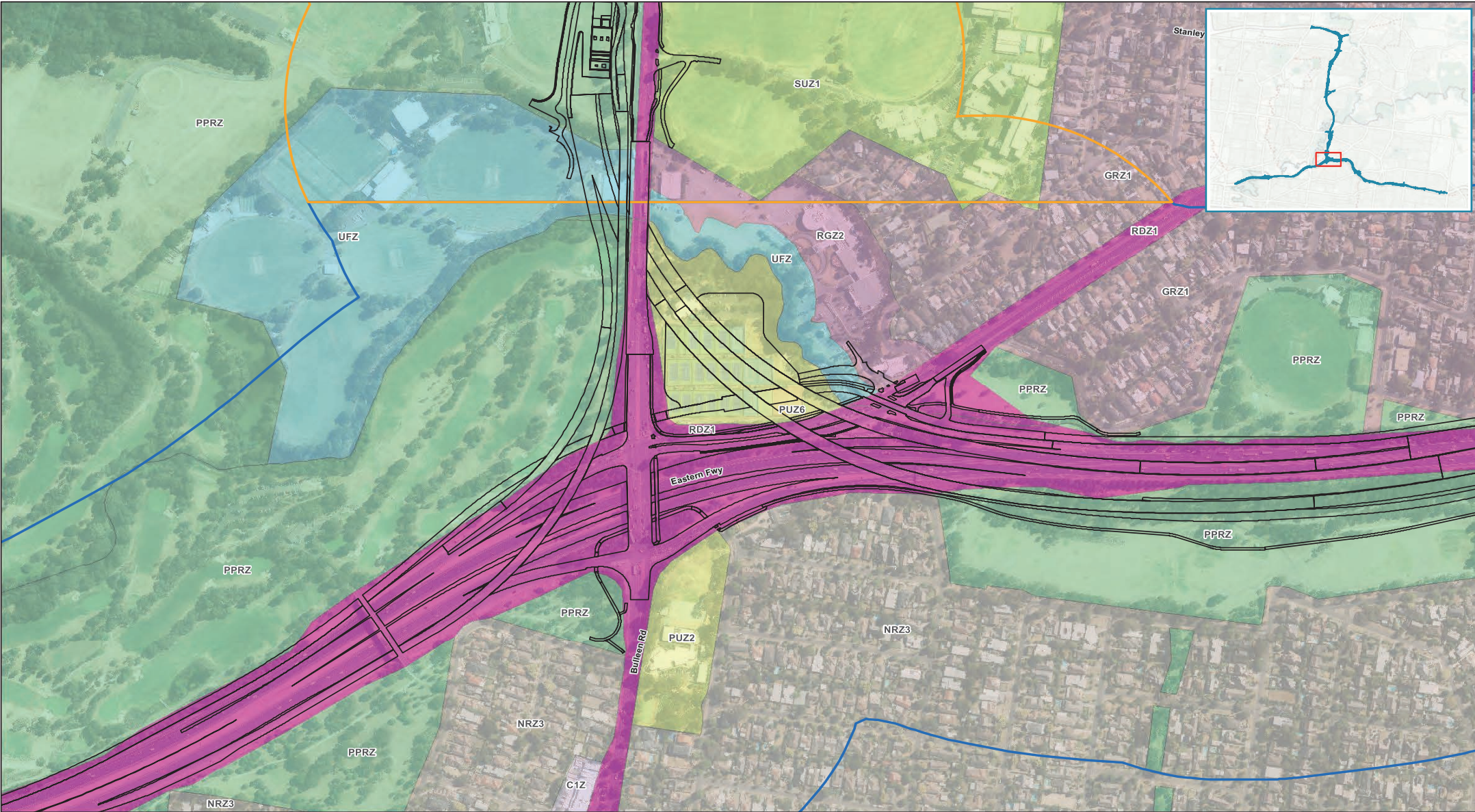
- Eastern Freeway



North East Link Project
Job Number
Revision
Date

31-35006
K
22 Nov 2018
Page 16 of 24

Land Use Planning - Zones: Eastern Freeway



Paper Size A3
0 50 100 150
Meters
Map Projection: Transverse Mercator
Horizontal Datum: GDA 1994
Grid: GDA 1994 MGA Zone 55



Legend

Planning zone

- Commercial 1
- General Residential

- Neighbourhood Residential
- Public Park and Recreation
- Public Use

- Road – Category 1
- Residential Growth
- Special Use
- Urban Flood

- EES Base Case Design
- Land Use Planning Precincts
- Eastern Freeway

- Northern Portal to Southern Portal



North East Link Project
Job Number: 31-35006
Revision: K
Date: 22 Nov 2018
Page 17 of 24

Land Use Planning - Zones: Eastern Freeway

180 Lonsdale Street Melbourne VIC 3000 Australia T 61 3 8687 8000 F 61 3 8687 8111 E melmail@ghd.com W www.ghd.com



Paper Size A3
0 50 100 150 200
Meters
Map Projection: Transverse Mercator
Horizontal Datum: GDA 1994
Grid: GDA 1994 MGA Zone 55



Legend

Planning zone

- Commercial 1
- General Residential
- Mixed Use

- Neighbourhood Residential
- Public Park and Recreation
- Public Use

- Road – Category 1
- Residential Growth
- EES Base Case Design

- Land Use Planning Precincts
- Eastern Freeway



North East Link Project
Job Number: 31-35006
Revision: K
Date: 22 Nov 2018
Page 18 of 24

Land Use Planning - Zones: Eastern Freeway

