



TOWN HALL STATION COMMUNITY REFERENCE GROUP

CROSS YARRA PARTNERSHIP
FRIDAY 4 JUNE 2021





TOWN HALL STATION COMMUNITY REFERENCE GROUP

Jodie Barrington, CBD Stakeholder Engagement Lead, CYP D&C

Blythe Chidgey, Town Hall Station Stakeholder Engagement Manager, CYP D&C

Mary Parker, Director - Communications and Creative, CYP Project Co.



Construction partner:



AGENDA

1. Project overview
2. TBM tunnelling update
3. Town Hall Station update
4. Creative Program Update

PROJECT OVERVIEW



Presenter: Blythe Chidgey



ARDEN

43 (out of 46) Arden Station Services building pre-cast façade panels installed

23 (out of 52) Arden Station entrance brick arch segments have been cast

First Arden Station platform concrete pour completed

Tunnel Invert (floor) slab pours completed between South Kensington and Arden

First rail tunnel gantry has arrived on site

North Melbourne electrical substation building works continue.



Services Building Façade



WB Tunnel Invert Complete

PARKVILLE

Permanent station box structure works are ongoing, including construction of internal walls, levels, columns, roof and platforms (FRP works)

Station fit out, including painting, and installation of blockwork and mechanical, electrical and plumbing (MEP) services is ongoing

Preparatory works for construction of two tunnel ventilation shafts and a chiller plant

Stage 2 piling is complete and station entrance excavation has commenced at the Grattan Street west site (adjacent to The Royal Melbourne Hospital and Peter MacCallum Cancer Centre).



STATE LIBRARY

Lining works continue along the arch of the central cavern. This involves installing reinforcement and pouring concrete using a custom built gantry system

Base slab construction at Franklin West is now complete. This involved drilling tension anchors between the concrete slab at the bottom of the shaft and the rock beneath

Top down construction is ongoing at the La Trobe and Little La Trobe Street sites. At the Little La Trobe Street site basement level 3 excavation is due to commence next week

Works have commenced to install a temporary deck within the ground floor slab at the La Trobe Street site. The temporary deck will improve access.



ANZAC

TBM Millie has been completely taken apart and removed from the westbound tunnel. TBM Alice continues to be disassembled and removed from the eastbound tunnel

In the south box, demolition of the sacrificial tunnel is now complete

In the north box, the concourse level of the station continues to be constructed section by section.

In the tram/train interchange station entrance, the team continues to construct the base slab of the entrance.

Now that tunnelling is complete, the slurry treatment plant at Edmund Herring Oval continues to be dismantled.



Tram Box Progress

TBM TUNNELLING UPDATE



Presenter: Blythe Chidgey





TBM Tunnelling on the project is now complete

TBM Joan

- Broke through at Town Hall Station – 5 April 2021

TBM Meg

- Broke through at Town Hall Station – 14 May 2021

TBM Alice

- Broke through at Town Hall Station – 3 May 2021

TBM Millie

- Broke through at Town Hall Station – 29 March 2021

In the west, each TBM constructed 4.2kms of tunnels from South Kensington to Town Hall Station.

In the east, each TBM constructed 3.5kms of tunnels from South Yarra to Town Hall Station.

TOWN HALL STATION UPDATE



Presenter: Blythe Chidgey



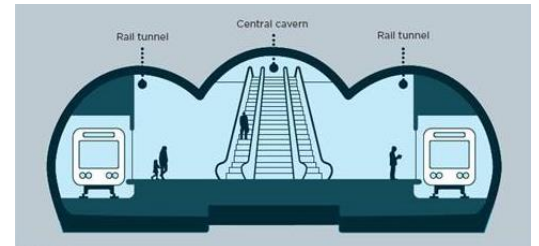
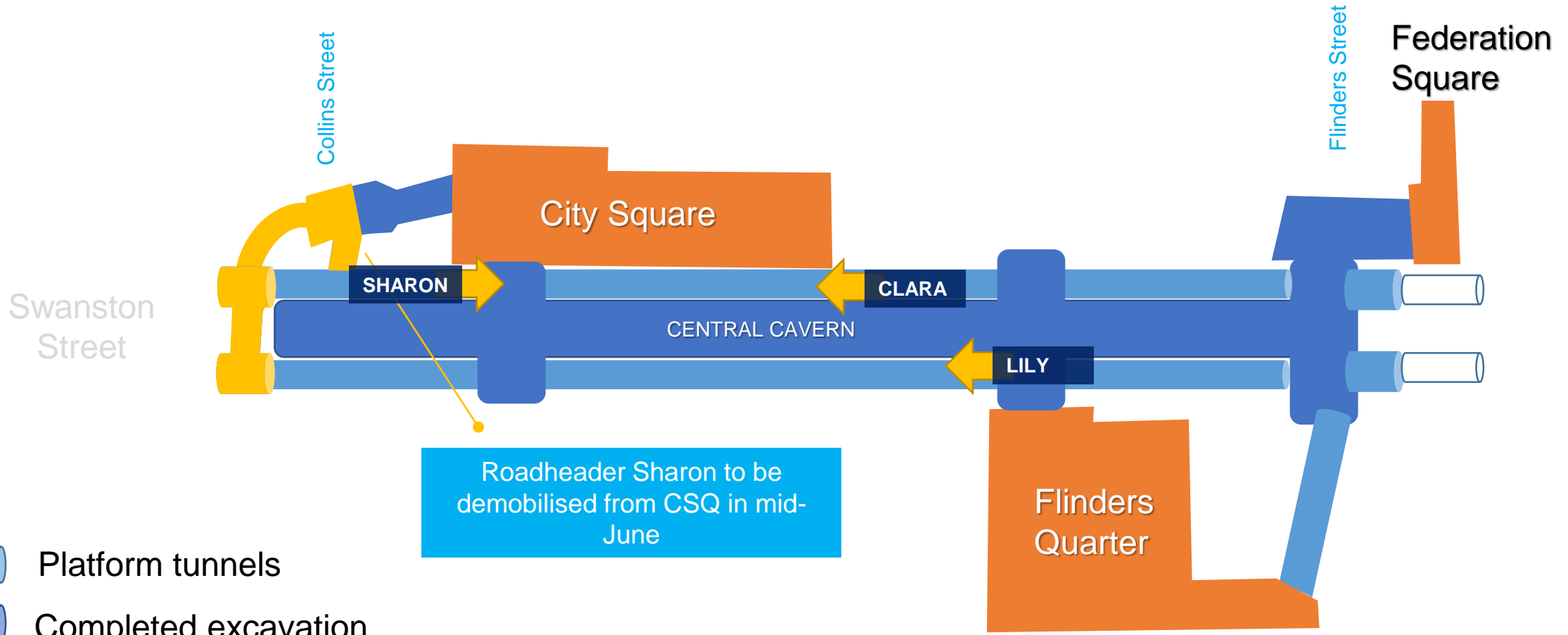
FAREWELL TO ROADHEADER MELINDA







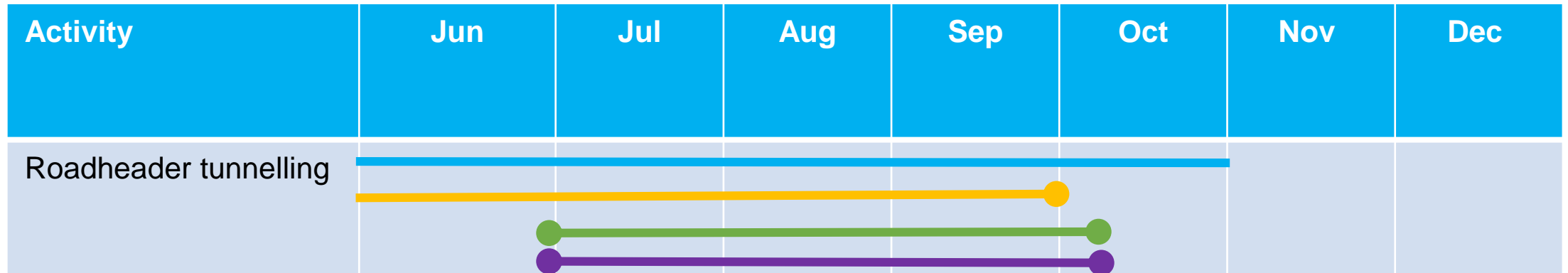
ROADHEADER TUNNELLING



ROADHEADER TUNNELLING UPDATE

HOURS

- 24 hours, Monday to Sunday



Platform rail tunnel excavation (top-heading)

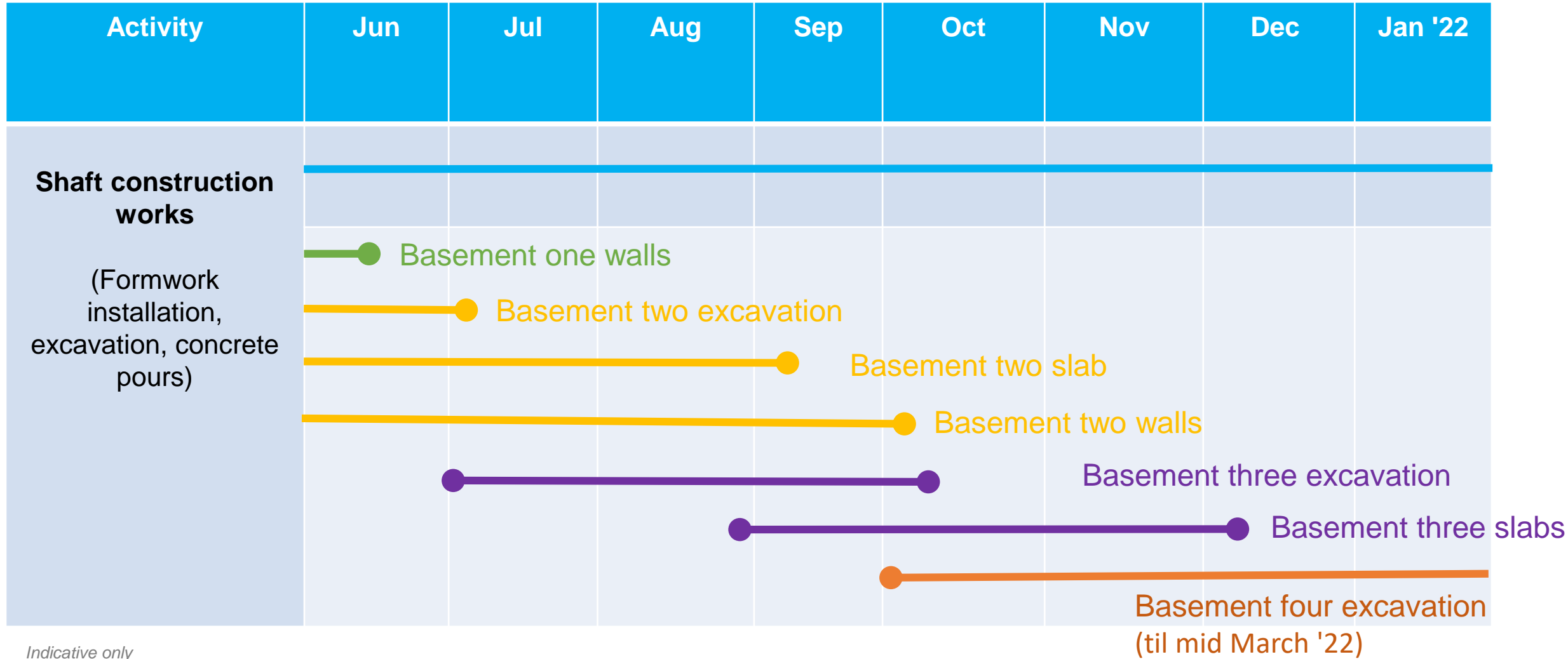
Platform rail tunnel excavation (bench)

Shotcrete shell removal



FLINDERS QUARTER

FLINDERS QUARTER



Indicative only

FLINDERS QUARTER HOURS

Deliveries (ongoing)

- Monday to Saturday, 5am to 7am
- Monday to Friday, 6pm to 10pm

Shaft construction

- Monday to Friday, 7am to 10pm
- Sundays, 8am to 4pm

Permanent concrete structure works

- Monday to Friday, 7am to 12am (concrete pours, as required)
- Monday to Fridays, 6pm to 7am (concrete finishing works, as required)

Excavation

- Monday to Friday, 7am to 10pm
- Saturdays, 7am to 5pm

Excavated material removal

- Monday to Sunday, 6:30am to 10pm



FLINDERS LINK

FLINDERS LINK WORKS UPDATE

Activity	Jun	Jul	Aug	Sep	Oct	Nov	Dec
Breakthrough	● — ●						
Roller door, gantry and pedestrian gate installation works	● — ●						
Roof construction		● — ●					
Backfill works			● ————— ●				

Including strut removal and utility installation



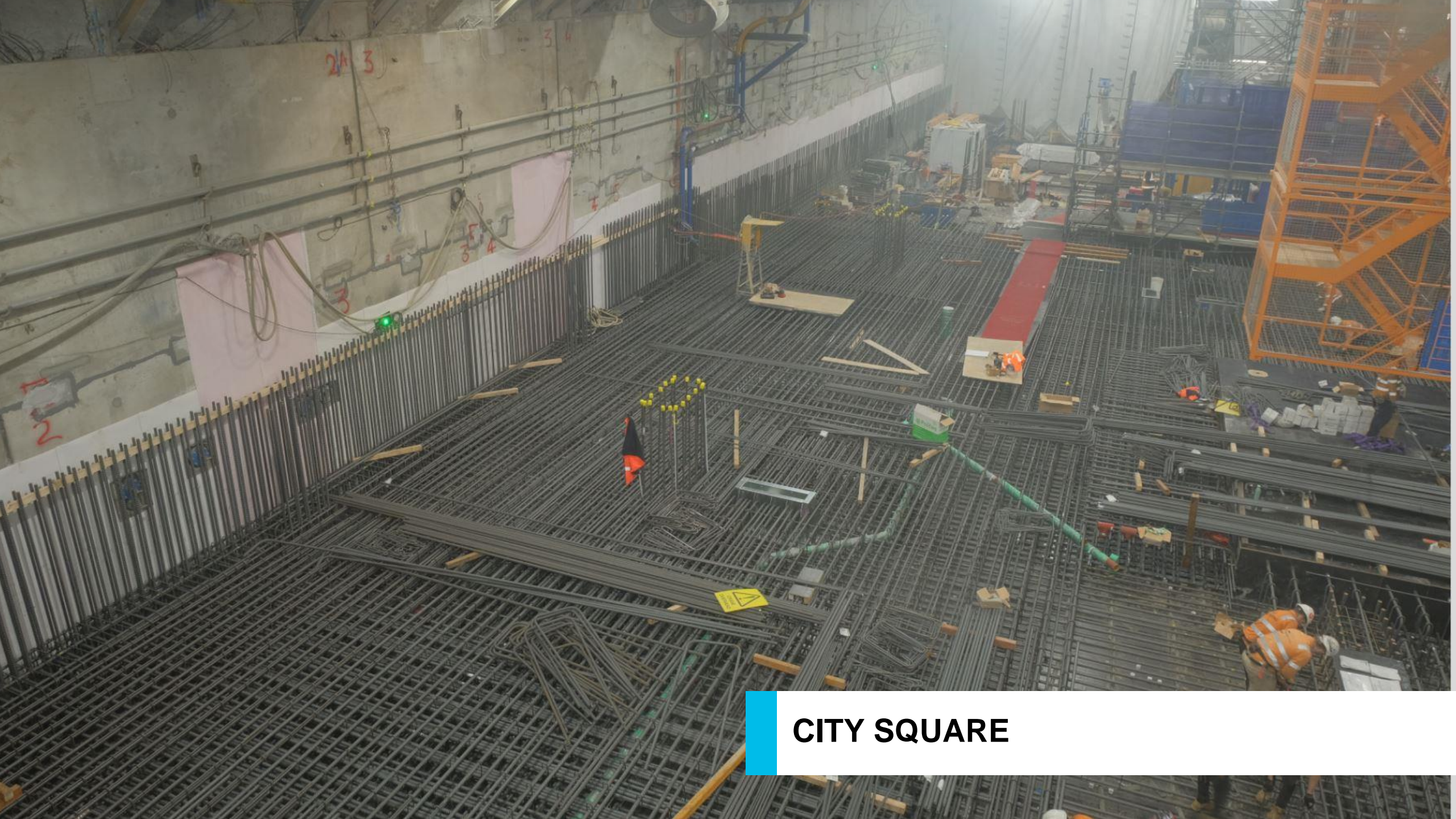
FEDERATION SQUARE

FEDERATION SQUARE WORKS UPDATE

HOURS


- 24 hours, Monday to Sunday

Activity	Jun	Jul	Aug	Sep	Oct	Nov	Dec
Tunnelling support works (excavated material removal)							



CITY SQUARE

CITY SQUARE WORKS UPDATE

Activity	Jun	Jul	Aug	Sep	Oct	Nov
Excavation		● — ●				
Tension pile installation		● — ●				
Station build out works						

Bottom up construction sequence in the shaft including the construction of the base slab, walls and suspended slabs

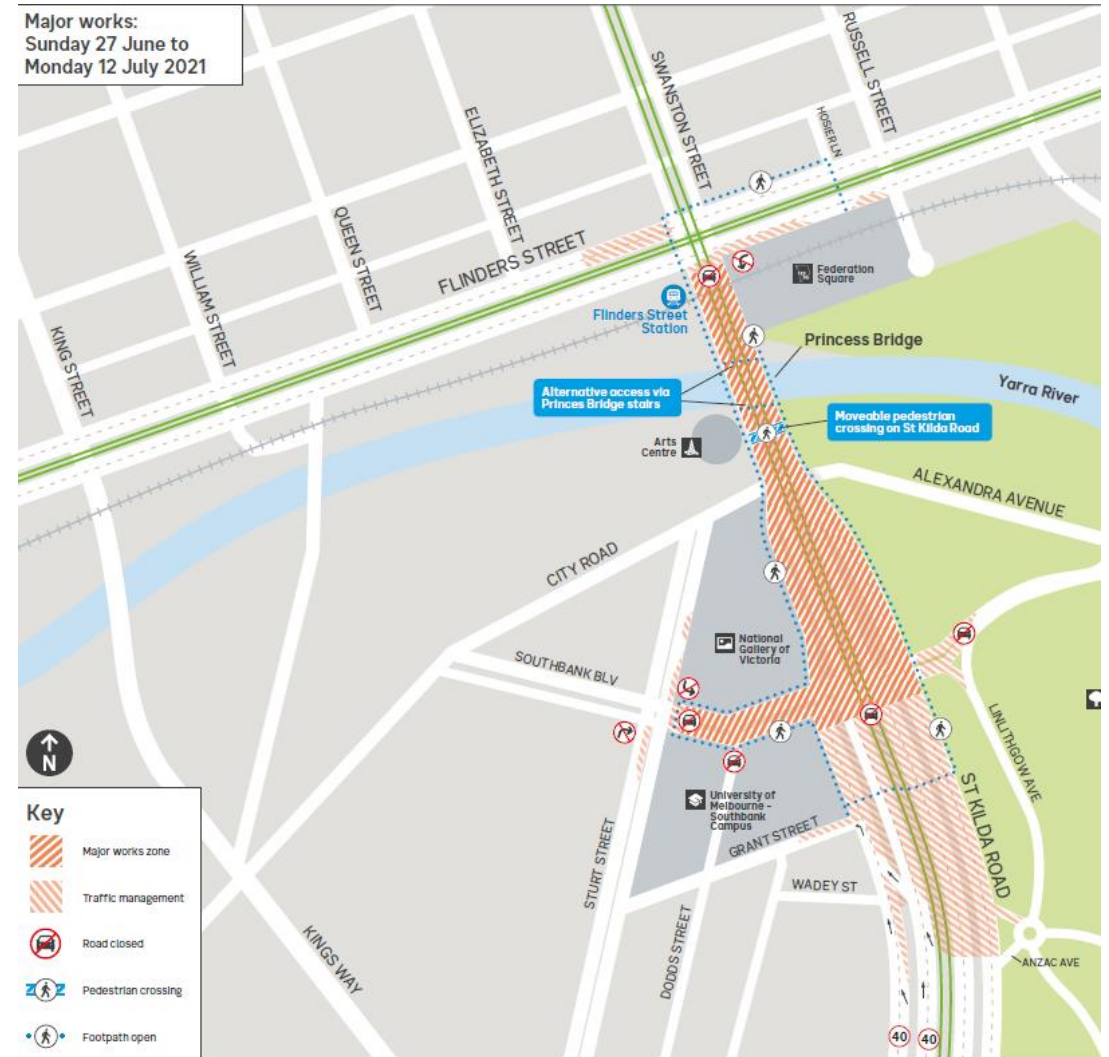
HOURS

- Monday to Sunday, 24-hours



YARRA TRAMS UPCOMING WORKS

- Yarra Trams will soon commence no MTP related upgrades to the tram tracks on St Kilda Road and Southbank Boulevard from **2.30am Sunday 27 June to 5am Monday 12 July 2021**.
- Works will include the replacement of tram tracks, poles and overhead wiring between Flinders Street and Southbank Boulevard, and Southbank Boulevard between St Kilda Road and Sturt Street
- Works will also include upgrades to Stop 13 Flinders Street Station and Federation Square.
- There will be periods of high-level noise, tram service and traffic changes as part of this work. For more information visit ptv.vic.gov.au or call **1800 800 007**.



QUESTIONS





METRO TUNNEL CREATIVE PROGRAM

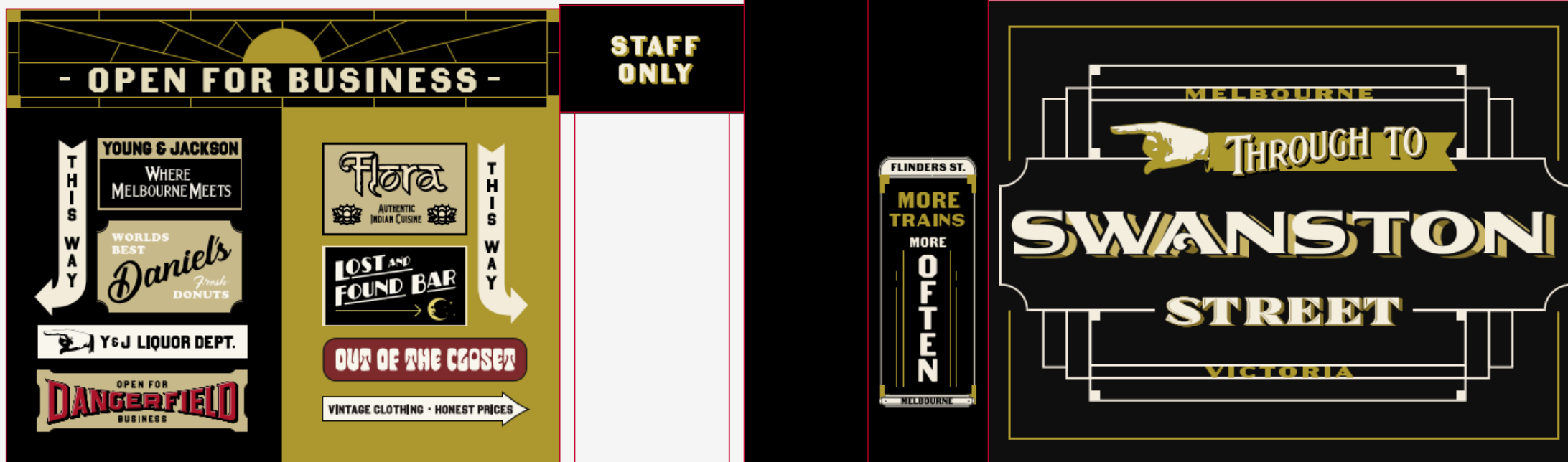
YIRRAMBOI – RONALD EDWARDS PEPPER



RISING – MOVING OBJECTS



FLINDERS ST CLOSURE



NOLA – SILENT DISCO



NOLA



- June: open call for registrations for Metro Tunnel Creative Program Artist Pool
- July: new artwork in Scott Alley for NAIDOC week
- August: Melbourne International Film Festival partnership
- August: new work at City Square for Melbourne Writers Festival
- August: Melbourne Map in Scott Alley
- October: Fringe Festival partnership
- October: Melbourne Fashion week partnership
- October: Melbourne International Jazz Festival partnership
- December: Xmas activation at City Square and Scott Alley