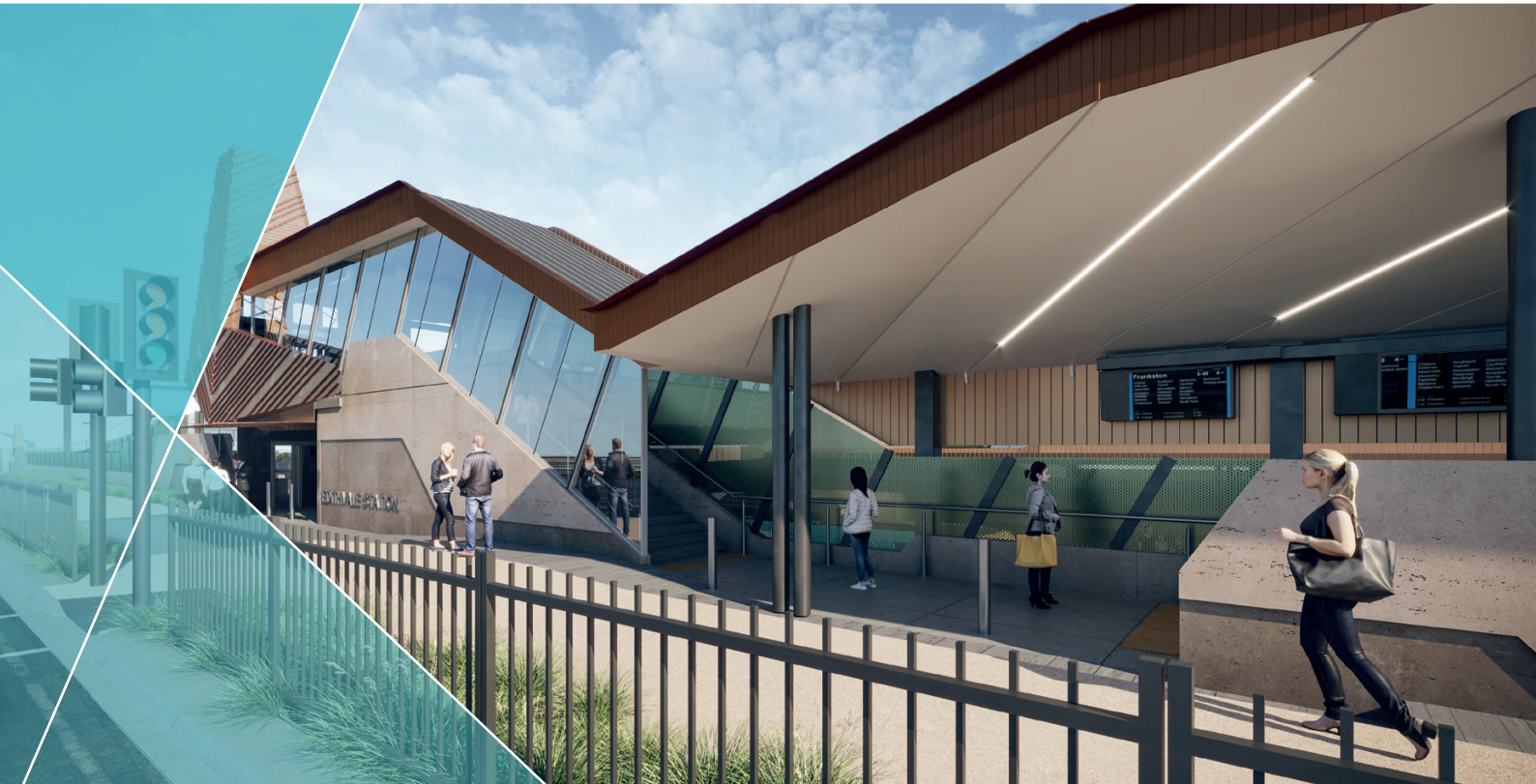


TREES AND LANDSCAPING



More than 30 different species of trees, plants and shrubs will be planted across Edithvale Station

What's growing in Edithvale's new precinct

The Victorian Government is removing 20 level crossings and building 13 new stations as part of a \$3 billion upgrade along the Frankston line that will improve safety, reduce congestion and allow more trains to run more often.

As part of works on the new Edithvale Station, we will plant more than 230 trees and 25,000 shrubs, groundcovers and grasses along the rail corridor and across the new station precinct.

Locals asked for a combination of native trees, shrubs, flowering plants and grasses to preserve the coastal, bayside look and feel of the suburb – something we heard was important to the community.

Based on this feedback, we've carefully selected more than 30 different species to be planted across the area. This includes indigenous and native varieties able to endure the local coastal conditions, such as strong winds, harsh sun and salt spray, while enhancing Edithvale's ecological value.

We will begin planting in late 2021 to take advantage of the growth season, with planting continuing until 2022.

Your new Edithvale precinct

- More than **230 trees** and **25,000 shrubs, groundcovers and grasses**
- More than **30 different species**
- Planting will start in **late 2021**



Tree planting

We will plant trees along Nepean Highway and Station Street that reflect the coastal dune landscape and nearby green open spaces, such as the Edithvale Wetlands.

Coastal banksia, willow bottlebrush and diverse varieties of flowering gum trees will be highlighted in the Edithvale Station precinct. These blossoming species were selected to provide warmth and colour, with various coastal species in the underbrush helping to create a vibrant, green appearance.

We'll plant the trees at different stages of maturity and sizes to better blend into the surrounding environment, however most will be younger vegetation to maximise rates of survival.



Flowering gum



Coastal banksia



Willow bottlebrush



Yellow bloodwood



Narrow-leaved bottle tree

Shrubs, groundcovers and grasses

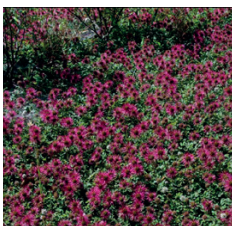
Groundcovers are plants, shrubs or grasses that grow over the surface of the ground and can help to prevent soil erosion and weeds.

Along the rail corridor in Edithvale, we will plant bottlebrush, bidgee-widgee, daisy bush and boobialla shrubs to provide bold foliage textures, enhance local biodiversity and invigorate the area.

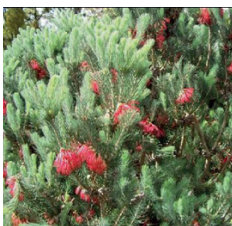
We focused on providing a resilient, sustainable landscape by selecting drought-tolerant plants with low water usage and high growth performance.



Correa silver star



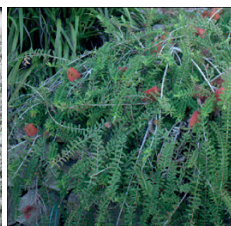
Bidgee-widgee



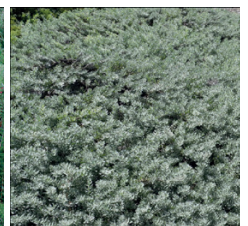
One-sided bottlebrush



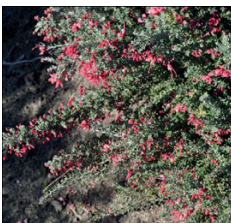
Coastal daisybush



Honey myrtle



Emu bush



Grevillea winter delight



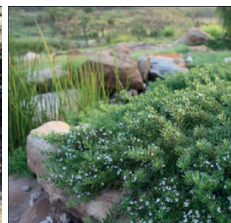
Small leaved clematis



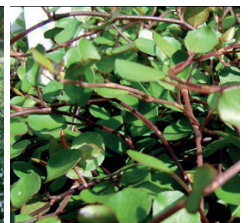
Hop goodenia



Knotted club rush



Creeping boobialla



Climbing lignum

CONTACT US

contact@levelcrossings.vic.gov.au
1800 105 105
Level Crossing Removal Project
GPO Box 2392, Melbourne VIC 3001

Follow us on social media
@levelcrossings



Translation service – For languages other than English, please call 9209 0147.

Please contact us if you would like this information in an accessible format.

If you need assistance because of a hearing or speech impairment, please visit relayservice.gov.au